

Smart Lock Box
User Manual



Product Parameters:

Material: Zinc Alloy/ ABS
Overall Size :145*105*55mm
Working Voltage :4.5-6 V
Working Temperature :-20℃~60℃

Power Interface: Micro USB
Internal Size :112*80*28mm
Battery Life :12+ months
Waterproof Rating: IPx5

Accessories:

Key Box --1 Piece User Manual --1 piece
Drill Template --1 Piece USB Cable --1 piece
Bolts --4 Pieces Screws --4 Pieces

Installation :

- 1) Mark 4 positioning points on the wall or door with the drilling template.
- 2) Use electric drill to punch holes in marking positions (Ø6 x30 mm), then insert the plastic bolts.
- 3) Open the front lid and fix it with the screws in the installation bag.

Notes:

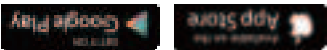
- 1) The 4 AAA alkaline batteries are not included. Please use Micro USB cable to connect the charging port then enter 123456+OK button to open the lid to install the batteries before getting start.
- 2) After the lock box is configured,the initial password 123456 will be invalid and needs to be modified in the password settings.
- 3) It needs network connection to set password,view record,remove device.
- 4) Once the box is binded, only need to enable Bluetooth to unlock.
- 5) The family members are the administrators,with all permissions to set and modify passwords, share devices, view records, etc....
Other members,who join the group via invitations are ordinary users,only allow to unlock via mobile phone or the passwords shared by the administrator.

FCC, CE, RoHS Certificates

User manual

Download APP:

Searching "SmartLife" on stores to download and install the APP.



Create Account:

Follow instructions in app to create an account with user's mobile phone number.

Install Battery: (4 AAA Alkaline not included)
Use the Micro USB cable to connect the charging port, then enter the initial passwords 123456+OK button to open the front lid to install the batteries.

Add Device:

- Register the "SmartLife" account and log in (Need network);
 - "Add Device" or click the symbol "+" in "Home" page;
 - Select "Auto Scan" to start searching device;
 - Click "Next" to add the key box.
- Family Management:**
- Login APP-- Select the device and enter the "Family" page;
 - Tap the first user(Administrator) to set several permanent passwords;
 - Tap the "+" to add members;
 - Enter the user's name and account to set the family role.
 - Common Member / Administrator

- Temporary password types:** (Passwords don't show on records)
- ◆ Time-limited password: (Use at least once within 24 hours after it takes effect)
 - ◆ One-time password: (Only one time to unlock and valid for 6 hours)
 - ◆ Dynamic password: (Multiple times to unlock and valid for 5-10 minutes)
 - ◆ Clearing password: (The selected password or all the time-limited one that has been used would be deleted. It is valid for 24 hours)
 - ◆ Custom password: (The device must connect to user's phone thru bluetooth)

Temporary Passwords Management:

Password sharing settings: (The receiver must have their app account)

- Login APP-- Select the device and enter the "Temporary" page;
- Select password type;
- Set the Effective and Expiration time;
- Obtain the passwords then copy and share with others .

Mobile phone password settings:

- Login APP-- Select device and enter the "Temporary" page;
- Select password type under mobile phone option;
- Enter the receiver's mobile phone or email address;
- The receiver login the app and unlock the device.

APP Unlock:

Rapid unlock:

--- Login APP--- Enter the device page- Long press the unlock icon.

Password Unlock:

--- Enter the passwords;
--- Press OK button on the device keypad.

View Access Logs:

Login APP---Enter the device page---Click unlocking records.

Remove Device:

(APP and the lock box MUST keep connecting)
--- Press the device icon on the home page for 3 seconds;
--- Click [Remove device] to delete.

Share Device:

--- Login APP---Enter the device page;
--- Click the symbol on the upper right corner;
--- Share device.

More Settings:

In the smart scenes,the user will have better experience by using these functionalities.Please follow the instructions to edit the scenes.

This device complies with part 15 of the FCC Rules. Operation is subject to the following two conditions: (1) this device may not cause harmful interference, and (2) this device must accept any interference received, including interference that may cause undesired operation.

Any changes or modifications not expressly approved by the party responsible for compliance could void the user's authority to operate the equipment.

NOTE: This equipment has been tested and found to comply with the limits for a Class B digital device, pursuant to Part 15 of the FCC Rules. These limits are designed to provide reasonable protection against harmful interference in a residential installation. This equipment generates, uses and can radiate radio frequency energy and, if not installed and used in accordance with the instructions, may cause harmful interference to radio communications. However, there is no guarantee that interference will not occur in a particular installation.

If this equipment does cause harmful interference to radio or television reception, which can be determined by turning the equipment off and on, the user is encouraged to try to correct the interference by one or more of the following measures:

- Reorient or relocate the receiving antenna.
- Increase the separation between the equipment and receiver.
- Connect the equipment into an outlet on a circuit different from that to which the receiver is connected.
- Consult the dealer or an experienced radio/TV technician for help.

The device has been evaluated to meet general RF exposure requirement. The device can be used in portable exposure condition without restriction