



UNIVERSAL 2-BUTTON REMOTE
INSTRUCTIONS

NOT FOR USE WITH ANY GARAGE DOOR OPENER MANUFACTURED PRIOR TO 1993.
SAFETY BEAMS (PHOTOCELLS) MUST BE IN PLACE AND OPERATIONAL.

WARNING

MOVING DOOR CAN CAUSE SERIOUS INJURY OR DEATH.

- DO NOT** install transmitter unless the door operator's **safety device** works as required by the door operator's manual.
- DO NOT** allow children to play with the transmitter or door operator.
- Keep people clear** of opening while door is moving.

If **safety reverse** does not work properly:

- Close door then disconnect opener** using the manual release handle.
- DO NOT** use transmitter or door operator.
- Refer to Door and Door Opener Owner's Manuals before attempting any repairs.

AVERTISSEMENT

UNE PORTE EN MOUVEMENT PEUT CAUSER DE GRAVES BLESSURES, VOIRE LA MORT.

- N'installez PAS le transmetteur à moins que l'appareil de sécurité du dispositif de fermeture de porte ne fonctionne conformément au manuel du dispositif de fermeture de porte. La console murale doit être montée à la vue de la porte, à au moins 5 pieds au-dessus du sol et il ne doit y avoir aucune pièce de porte en mouvement à proximité.
- Éloignez les gens de l'ouverture lorsque la porte est en mouvement.
- NE permettez PAS aux enfants de jouer avec le transmetteur ou le dispositif de fermeture de porte.
- Si l'inversion de sécurité ne fonctionne pas correctement :
- Fermez la porte, puis déconnectez le dispositif d'ouverture à l'aide de la poignée de dégagement manuel.
- N'utilisez PAS le transmetteur ni le dispositif de fermeture de porte.
- Référez-vous aux manuels du propriétaire de la porte et de l'ouvre-porte avant de tenter toute réparation.

THINGS TO KNOW BEFORE STARTING:

- During programming, the garage door opener may operate. Ensure that the garage door opening is clear of personnel or any obstructions.
- Do not to press the LEARN button for longer than the noted 2-3 seconds as it could cause your existing, operational remotes and keypads to no longer work.
- All buttons are factory set to Genie Intellicode® 1.

Below are the brands and specifications that this remote is compatible with. Find the ID# in Chart A below that references your specific opener specification. You will need this number during programming. Refer to STEP 1 to find the type and/or LEARN/PROGRAM button.

Chart A

AVAILABLE PROGRAM METHOD		LEARN METHOD ID#
Brand Name	Specification Notes	Number of Button Presses (ID#)
Genie®	315/390 MHz, Intellicode® I, 1995-current	1
Overhead Door®	315/390 MHz, CodeDodger® I, 1995-current	1
Chamberlain® LiftMaster® CraftsMan®	Purple Learn Button, Security +®, 2006-2014, 315 MHz	2
	Orange/Red Learn Button, Security +®, 1996-2005, 390 MHz	3
	Yellow Learn Button, Security +2.0®, 2011-current, 390 MHz	4
	Green Learn Button, Billion Code®, 1993-1995, 390 MHz	5
Genie®	315/390 MHz, Intellicode® II, 2010-2011	6
Overhead Door®	315/390 MHz, CodeDodger® II, 2010-2011	6
Sommer®	310 MHz, Rolling Code	7
Linear®	318 MHz, Mega Code®	8
Wayne Dalton®	372.5 MHz, Rolling Code, 1999-current	9
Ryobi®	372.5 MHz, Rolling Code	10
Guardian®	303 MHz, Fixed Learn Code	11
Xtreme® brand	303 MHz, Fixed Learn Code	11
Marantec®	315 MHz, Fixed Learn Code	12
FAAC®	433.92 MHz, Rolling Code	13

Genie® and Intellicode® are registered trademarks of The Genie Company. All other listed names and trademarks are the property of their respective owners.

NOTE: During programming, the garage door opener will operate. Ensure that the garage door opening is clear of personnel or any obstructions.

STEP 1 - Find Specifications & Learn Button

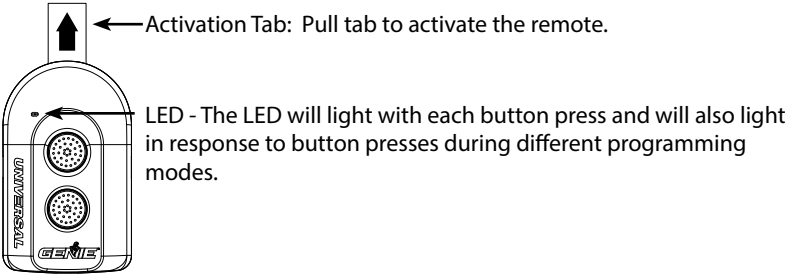
- Locate the brand and opener/receiver specifications for your device by consulting the label on the opener/receiver, the instruction manual, the current remote controls for the opener, or the original manufacturer of the opener/receiver.
- Find the LEARN/PROG button on your device - shape, color or name of this button could vary by brand. For garage door openers, be sure to check under the light covers. For commercial or gate openers, this button may be on the circuit board of the opener. In some cases, this button could also be on an external receiver that is mounted on or nearby the product. Consult the devices manual if needed.

*For Marantec® openers, reference operator manual to program remotes to the operator head.

EXAMPLES:

Gate Receivers

STEP 2 - Activate Remote/Button Layout & LED



STEP 3 - Programming Remote

IMPORTANT: For ID#4 Chamberlain®/LiftMaster®/Craftsman® Yellow Learn Button - move immediately to the proper section below. For all other ID#s, proceed to LEARN METHOD section.

LEARN METHOD

Review Chart A to find your specifications and available programming options. Each button can be programmed individually to operate up to 2 different brands of garage door openers and gate receivers.

- Remove activation tab from inside battery compartment.
- Find and remember the required number of button presses (ID#) in the LEARN METHOD column next to your brands/specification in Chart A.
REMEMBER: For ID#4 Chamberlain®/LiftMaster®/Craftsman® Yellow Learn Button ONLY - Move immediately to instructions below. For all other ID#s, proceed to step 3.
- On remote, press and hold down BOTH buttons at the same time – as soon as the RED LED begins flashing, immediately release both buttons (@ 5 seconds).
- On remote, press button of your choice the required number of times from CHART A.
- When presses are complete, simply wait until the GREEN LED blinks and then goes out.
- On opener, press LEARN/PROGRAM button for 2-3 seconds and then release.
- Press and release button you just programmed once every 2 seconds until the garage door opener operates.
- Test the button - programming is complete.
TIP: Allow the LED light on the universal transmitter to stop flashing before your next button press.

ONLY for ID#4 Chamberlain®/LiftMaster®/Craftsman® Yellow Learn:

- Remove activation tab from inside battery compartment.
- On remote, press and hold down BOTH buttons at the same time – as soon as the RED LED begins flashing, immediately release both buttons (@ 5 seconds).
- On remote, press button of your choice four times.
- When presses are complete, simply wait until the GREEN LED blinks and then goes out.
- On remote, press and hold down the button you just chose until the GREEN LED blinks and goes out again – then release (@5 seconds).
- On opener, press LEARN/PROGRAM button for 2-3 seconds and then release.
- Press the remote button you chose ONE time. Opener will click.
- On the opener, press the LEARN/PROGRAM button again for 2-3 seconds then release.
- Press the remote button you chose ONE time again. Opener will click again.
- Press the remote button again and the opener will activate.
- Test the button - programming is complete.
TIP: Allow the LED light on the universal remote to stop flashing before your next button press.

Clearing Remote

Clearing out the remote

To clear any existing programming from the remote, perform the following:

- Press and hold down BOTH buttons at the same time – continue holding down both buttons until the GREEN LED blinks and goes out (@10 seconds).

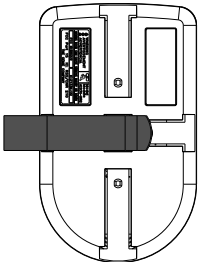
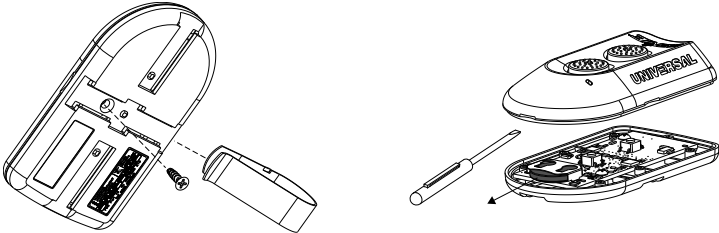
Installing Visor Clip - Changing Batteries

Visor Clip

Insert visor clip to any of the 4 slots in back of case dependent on mounting preference.

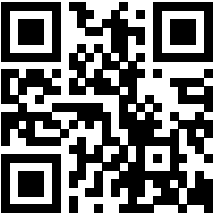
Change Battery

Remove visor clip and screw from back of remote.
Pry case open with small coin or screwdriver.
Replace battery with **CR2032 coin cell**.



Programming Assistance:

If the opener does not activate after the steps shown, repeat steps or contact Customer Care by website chat (www.geniecompany.com) or by phone at: 1-800-354-3643 for programming assistance. You may also scan this QR code for additional information and links.



For Patent Information: www.geniecompany.com/patents, ©2021, The Genie Company

FCC Part 15.21 Statement:
Changes or modifications not expressly approved by the party responsible for compliance could void the user's authority to operate the equipment.

FCC / IC Statement:
This device complies with FCC Part 15 and Industry Canada licence-exempt RSS standard(s). Operation is subject to the following two conditions: (1) this device may not cause harmful interference, and (2) this device must accept any interference received, including interference that may cause undesired operation of the device.