



Product Service

---

**Choose certainty.  
Add value.**

# Report On

FCC DFS Testing of the  
Aava Mobile Oy INARI8-3GAN-1  
In accordance with FCC CFR 47 Part 15E and FCC 06-96

COMMERCIAL-IN-CONFIDENCE

FCC ID: 2ABVH-INARI81

Document 75926145 Report 02 Issue 2

May 2014



Product Service

TÜV SÜD Product Service, Octagon House, Concorde Way, Segensworth North,  
Fareham, Hampshire, United Kingdom, PO15 5RL  
Tel: +44 (0) 1489 558100. Website: [www.tuv-sud.co.uk](http://www.tuv-sud.co.uk)

COMMERCIAL-IN-CONFIDENCE

**REPORT ON**

FCC DFS Testing of the  
Aava Mobile Oy INARI8-3GAN-1  
In accordance with FCC CFR 47 Part 15E and FCC 06-96

Document 75926145 Report 02 Issue 2

May 2014

**PREPARED FOR**

Aava Mobile Oy  
Nahkatehtaankatu 2  
90130  
Oulu  
Finland

**PREPARED BY**

**Natalie Bennett**  
Senior Administrator, Technical Solutions

**APPROVED BY**

**Simon Bennett**  
Authorised Signatory

**DATED**

08 May 2014

---

**ENGINEERING STATEMENT**

The measurements shown in this report were made in accordance with the procedures described on test pages. All reported testing was carried out on a sample equipment to demonstrate limited compliance with FCC CFR 47 Part 15E and FCC 06-96. The sample tested was found to comply with the requirements defined in the applied rules.

Test Engineer(s);

S Milliken





## CONTENTS

Section	Page No
<b>1</b>	<b>REPORT SUMMARY ..... 3</b>
1.1	Introduction ..... 4
1.2	Test Requirements ..... 5
1.3	Brief Summary of Results ..... 6
1.4	Application Form ..... 7
1.5	Product Information ..... 10
1.6	Test Conditions ..... 10
1.7	Deviations from the Standard ..... 10
1.8	Modification Record ..... 10
1.9	DFS Test System ..... 11
<b>2</b>	<b>TEST DETAILS ..... 13</b>
2.1	Calibration of Test Setup ..... 14
2.2	In-Service Monitoring ..... 24
<b>3</b>	<b>TEST EQUIPMENT USED ..... 31</b>
3.1	Test Equipment Used ..... 32
3.2	Support Test Equipment ..... 33
3.3	Measurement Uncertainty ..... 34
<b>4</b>	<b>PHOTOGRAPHS ..... 35</b>
4.1	Test Set-Up Photographs ..... 36
4.2	DFS Test Equipment ..... 36
<b>5</b>	<b>ACCREDITATION, DISCLAIMERS AND COPYRIGHT ..... 37</b>
5.1	Accreditation, Disclaimers and Copyright ..... 38



Product Service

## **SECTION 1**

### **REPORT SUMMARY**

FCC DFS Testing of the  
Aava Mobile Oy INARI8-3GAN-1  
In accordance with FCC CFR 47 Part 15E and FCC 06-96



## 1.1 INTRODUCTION

The information contained in this report is intended to show the verification of FCC DFS Testing of the Aava Mobile Oy INARI8-3GAN-1 to the requirements of FCC CFR 47 Part 15E and FCC 06-96.

Objective	To perform FCC DFS Testing to determine the Equipment Under Test's (EUT's) compliance with the Test Specification, for the series of tests carried out.
Manufacturer	Aava Mobile Oy
Model Number(s)	Inari8-3GAN-C1
Serial Number(s)	IMEI 866274011528092
Hardware Version	Pre-Production
Software Version	Windows 8.1
Number of Samples Tested	1
Test Specification/Issue/Date	FCC CFR 47 Part 15E (2013) FCC 06-96 (2006)
Incoming Release Date	Application Form 11 April 2014
Disposal Reference Number Date	Held Pending Disposal Not Applicable Not Applicable
Order Number Date	PMDE143054 17 March 2014
Start of Test	7 May 2014
Finish of Test	7 May 2014
Name of Engineer(s)	S Milliken
Related Document(s)	FCC Public Notice DA 02-2138 (2002); UKAS M3003: Edition 2 (2007); ETSI TR 100 028 (2001)

**This report has been up issued to Issue 2 and should be read in place of Issue 1. This report has been up issued to Issue 2 to correct an error in the Test Procedure description in Section 2.2.5 and include amended plots.**



## 1.2 TEST REQUIREMENTS

Table 1: Applicability of DFS Requirements Prior to Use of a Channel

Requirement	Operational Mode		
	Master	Client Without DFS	Client With DFS
Non-Occupancy Period	Yes	Not required	Yes
DFS Detection Threshold	Yes	Not required	Yes
Channel Availability Check Time	Yes	Not required	Not required
Uniform Spreading	Yes	Not required	Not required
U-NII Detection Bandwidth	Yes	Not required	Yes

Table 2: Applicability of DFS requirements during normal operation

Requirement	Operational Mode		
	Master	Client Without DFS	Client With DFS
DFS Detection Threshold	Yes	Not required	Yes
Channel Closing Transmission Time	Yes	Yes	Yes
Channel Move Time	Yes	Yes	Yes
U-NII Detection Bandwidth	Yes	Not required	Yes



### 1.3 BRIEF SUMMARY OF RESULTS

A brief summary of the tests carried out in accordance with FCC CFR 47 Part 15E and FCC 06-96 is shown below.

Section	Spec Clause	Test Description	Result	Comments/Base Standard
802.11(a)				
2.1	NA	Calibration of Test Setup	Pass	
2.2	15.407 (h)(2)(iii)	In-Service Monitoring	Pass	
802.11(n) 20 MHz BW				
2.1	NA	Calibration of Test Setup	Pass	
2.2	15.407 (h)(2)(iii)	In-Service Monitoring	Pass	
802.11(n) 40 MHz BW				
2.1	NA	Calibration of Test Setup	Pass	
2.2	15.407 (h)(2)(iii)	In-Service Monitoring	Pass	



## 1.4 APPLICATION FORM

EQUIPMENT DESCRIPTION	
Model Name/Number	INARI8-3GAN-1
Part Number	INARI8-3GAN-1
Hardware Version	Pre-Production
Software Version	Windows 8.1
FCC ID	2ABVH-INARI81
Technical Description (Please provide a brief description of the intended use of the equipment)	Windows tablet computer with integrated WLAN and 3G modem.

TYPE OF EQUIPMENT
<input type="checkbox"/> Master
<input type="checkbox"/> Client with Radar Detection
<input checked="" type="checkbox"/> Client without Radar Detection
<input type="checkbox"/> Wi-Fi Direct Support

TRANSMITTER TECHNICAL CHARACTERISTICS	
FREQUENCY CHARACTERISTICS	
<input checked="" type="checkbox"/> 5.150 GHz to 5.250 GHz	
<input checked="" type="checkbox"/> 5.250 GHz to 5.350 GHz	
<input checked="" type="checkbox"/> 5.470 GHz to 5.725 GHz	
<input checked="" type="checkbox"/> 5.725 GHz to 5.825 GHz	
<input type="checkbox"/> Please confirm the EUT does not operate in the frequency band 5600 – 5650 MHz	
<input type="checkbox"/> Off Channel CAC Implemented	
Off Channel CAC within 5600 – 5650 MHz band	hours, (1 – 24)
Off Channel CAC outside 5600 – 5650 MHz band	minutes, (6 – 240)
Note: DFS is not required in the ranges 5.15 – 5.25 GHz and 5.725 – 5.825 GHz	

TRANSMITTER RF POWER CHARACTERISTICS	
Maximum rated transmitter output power as stated by manufacturer	
Conducted Power	12 dBm
Maximum Antenna Gain	1.9 dBi
EIRP	13.9 dBm
Minimum rated transmitter output power as stated by manufacturer (if applicable)	
Conducted Power	12 dBm
Maximum Antenna Gain	1.49 dBi
EIRP	13.49 dBm
Is TPC supported?	<input type="checkbox"/> Yes <input checked="" type="checkbox"/> No
If Yes, provide a description of operation.	





POWER SOURCE			
<input type="checkbox"/>	AC mains supply	State voltage	
	AC supply frequency (Hz)	VAC	
<input checked="" type="checkbox"/>	DC supply		
	Nominal voltage	4.2 V Nominal	

SYSTEM ARCHITECTURE			
<input type="checkbox"/>	Frame Based		
<input type="checkbox"/>	IP Based		
<input type="checkbox"/>	Other	If other please state	
<input checked="" type="checkbox"/>	802.11(a)	Receiver Bandwidth:	MHz
<input checked="" type="checkbox"/>	802.11(n) – 20 MHz	Receiver Bandwidth:	MHz
<input checked="" type="checkbox"/>	802.11(n) – 40 MHz	Receiver Bandwidth:	MHz
<input type="checkbox"/>	802.11(ac) – 20 MHz	Receiver Bandwidth:	MHz
<input type="checkbox"/>	802.11(ac) – 40 MHz	Receiver Bandwidth:	MHz
<input type="checkbox"/>	802.11(ac) – 80 MHz	Receiver Bandwidth:	MHz

DECLARATION	
No parameter or information relating to the detected radar waveforms is available or accessible to the end user.	
<input checked="" type="checkbox"/>	True
<input type="checkbox"/>	False

MISCELLANEOUS (Master Device Only)
Power-on cycle time*
* Time from switching on the UUT to the point at which Channel Availability Check (CAC) commences

UNIFORM SPREADING (Master Device Only)
Describe how the meter provides, on aggregate, uniform channel loading of the spectrum across all channels.



Product Service

ANTENNA OPTIONS	
<b>Antenna 1</b>	
Antenna Description:	Internal antenna
Antenna Model:	
Antenna Maximum Gain:	1.9 dBi
Antenna Frequency Range:	2.4Ghz
<b>Antenna 2</b>	
Antenna Description:	Internal Antenna
Antenna Model:	
Antenna Maximum Gain:	1.47
Antenna Frequency Range:	5GHz band
<b>Antenna 3</b>	
Antenna Description:	
Antenna Model:	
Antenna Maximum Gain:	
Antenna Frequency Range:	
<b>Antenna 4</b>	
Antenna Description:	
Antenna Model:	
Antenna Maximum Gain:	
Antenna Frequency Range:	
<b>Antenna 5</b>	
Antenna Description:	
Antenna Model:	
Antenna Maximum Gain:	
Antenna Frequency Range:	

I hereby declare that I am entitled to sign on behalf of the applicant and that the information supplied is correct and complete.

Signature:  Name: Patrick Lomax  
 Position held: Senior Project Manager Date: 11.04.2014



Product Service

## **1.5 PRODUCT INFORMATION**

### **1.5.1 Technical Description**

The Equipment Under Test (EUT) was a Aava Mobile Oy INARI8-3GAN-1. A full technical description can be found in the manufacturer's documentation.

The EUT is a Client without Radar Detection device.

## **1.6 TEST CONDITIONS**

For all tests the EUT was set up in accordance with the relevant test standard and to represent typical operating conditions. See individual test clauses.

The EUT was powered from a 120 V AC 60 Hz power supply unit via an AC/DC USB adapter.

FCC Measurement Facility Registration Number  
90987 Octagon House, Fareham Test Laboratory

## **1.7 DEVIATIONS FROM THE STANDARD**

No deviations from the applicable test standard were made during testing.

## **1.8 MODIFICATION RECORD**

Modification 0 - No modifications were made to the test sample during testing.



## 1.9 DFS TEST SYSTEM

The DFS system consists of hardware and software. The Hardware uses a PXI chassis with PXI instruments populating the chassis. The instruments used are a Vector Signal Generator, a Digitiser, Frequency References and a Dual Core PC. The measurement and analysis software runs on the PC and controls the instruments within the mainframe via commands on the PXI bus. Various markers are contained within the generated waveforms. The markers are used to trigger the measurement system at the appropriate points. An external trigger is also provided at the SMB output on the Vector Signal Generator which is employed where a Spectrum Analyser is used in place of the Aeroflex Digitiser. These are described within the test procedure for the applicable test.

The Aeroflex DFS software generates the pulses in accordance with FCC 06-96.

### Short Pulse Radar Test Waveform (Types 1-4)

The short pulse radar simulation is a conventional amplitude pulse with varying pulse widths, pulse rate intervals (PRI) and number of pulses. General characteristics for these types and number of repetitions required by the standard are as follows:

Radar Type	Pulse Width (µsec)	PRI (µsec)	Number of Pulses
1	1	1428	18
2	1-5	150-230	23-29
3	6-10	200-500	16-18
4	11-20	200-500	12-16

### FCC 06-96 - Table 5 – Short Pulse Radar Test Waveforms

### Long Pulse Radar Test Waveform (Type 5)

The long pulse radar simulation is a 12 second concatenated series of chirps, chosen randomly. The general characteristics for type 5 and number of repetitions required by the standard are as follows:

Radar Type	Pulse Width (µsec)	Chirp Width (MHz)	PRI (µsec)	Number of Pulses per Burst	Number of Bursts
5	50-100	5-20	1000-2000	1-3	8-20



### FCC 06-96 - Table 6 – Long Pulse Radar Test Waveform

A Type 5 Radar sequence is constructed in the following way:

- 1) The user provides the required level based on the calibration and the test frequency.
- 2) The Burst\_Count, (a number between 8 and 20 inclusive), is chosen representing the number of "bursts" (or waveform segments). Type 5 waveform length is 12 seconds, thus each "burst" length will be  $BL = 12 / \text{Burst\_Count}$ .
- 3) Pulse\_Count, a number between 1 and 3 inclusive is chosen for each burst segment (1 through Burst\_Count) representing the number of chirped pulses for each burst segment.
- 4) For each burst segment, the following chirp parameters are randomly chosen (all chirped pulses within a given burst segment are the same, whether 1, 2, or 3 chirped pulses are chosen):
  - a) Frequency width (5 MHz to 20 MHz, a linear and symmetrical ramp)
  - b) Pulse period (50  $\mu\text{s}$  to 100  $\mu\text{s}$ )
  - c) Pulse Rate Interval (1 ms to 2 ms, in 1  $\mu\text{s}$  increments)
  - d) The start of the first pulse in a given burst segment is randomly chosen (in 1  $\mu\text{s}$  increments) between 1  $\mu\text{s}$  and [(the total burst length - (total of all pulse periods within a burst) + (the total space between pulses within a burst)]. Or stated otherwise, 1  $\mu\text{s}$  to [ (BL - (Pulse\_Count \* pulse period) + (Pulse\_Count - 1) \* randomly chosen PRI Interval)].

### Frequency Hopping Test Waveform (Type 6)

The frequency hopping radar simulation emits 9 1  $\mu\text{s}$  wide amplitude pulses with a 333  $\mu\text{s}$  PRI spacing on a randomly chosen frequency, hops to another randomly chosen frequency, emits another 9 pulses and then continues this sequence for 100 different frequencies chosen using a pseudo random sequence. General characteristics for type 6 and number of repetitions required by the standard are as follows:

Radar Type	Pulse Width ( $\mu\text{sec}$ )	PRI ( $\mu\text{sec}$ )	Pulses per Hop	Hopping Rate (kHz)	Hopping Sequence Length (msec)
6	1	333	9	0.333	300

### FCC 06-96 - Table 7 – Frequency Hopping Radar Test Waveform

The frequency hopping Radar is generated in the following way:

- a) The user inputs the required level based on the calibration and a frequency within the EUT detection bandwidth.
- b) A sequence of 100 numbers, ( $n = 1$  to 100), are randomly chosen from between 1 to 475 and then removed from the sequence producing 100 unique random numbers.
- c) Frequency assignments are  $5250 \text{ MHz} + n$ .
- d) If the list generated from steps (b) and (c) does not include at least one frequency which is between 5250 to 5350 MHz or 5470 to 5725 MHz, the list is regenerated.
- e) Secondly, in order to verify that at least one frequency in the list is at the EUT frequency plus or minus  $\frac{1}{2}$  the EUT detection bandwidth (i.e. at least one of the frequencies in the list must conflict with the EUT's operation such that the EUT will attempt to relocate when the sequence is played), the frequency supplied by the user is inserted into the list, replacing one selection.

Using the supplied Aeroflex software, the pulses are automatically generated and the required numbers of trials are created for each Radar Type – except in the case of Radar Type 1 which has no changeable attributes. The pulses are saved as Arbitrary Waveform files which are then selected by the user for use in the scenario being tested.



Product Service

## **SECTION 2**

### **TEST DETAILS**

FCC DFS Testing of the  
Aava Mobile Oy INARI8-3GAN-1  
In accordance with FCC CFR 47 Part 15E and FCC 06-96



Product Service

## **2.1 CALIBRATION OF TEST SETUP**

### **2.1.1 Specification Reference**

FCC CFR 47 Part 15E and FCC 06-96

### **2.1.2 Equipment Under Test and Modification State**

Inari8-3GAN-C1 S/N: IMEI 866274011528092 - Modification State 0

### **2.1.3 Date of Test**

28 March 2014

### **2.1.4 Environmental Conditions**

Ambient Temperature	21.8°C
Relative Humidity	36.5%

2.1.5 Test Results

802.11(a)

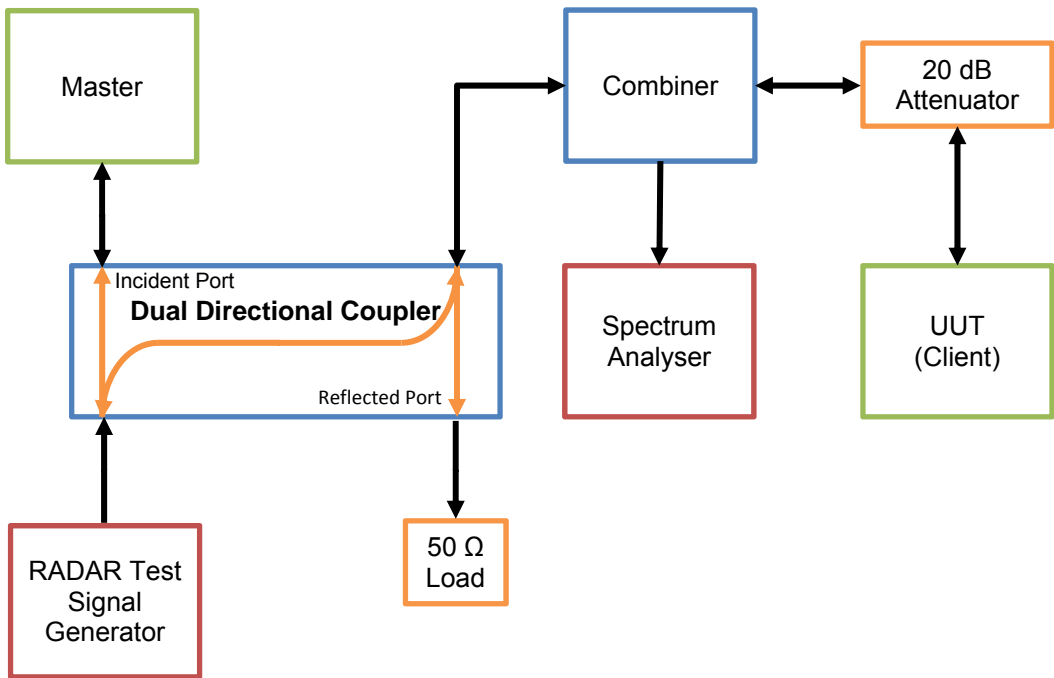
In this test equipment configuration, Radar signals are injected at the Master. The configuration ensures that the Radar pulses are received only by the Master device and not the Client. To calibrate the Radar pulses, the UUT was replaced by a Spectrum Analyser. The required Radar Waveform, (Type 1), was loaded into the Arbitrary Waveform Generator. The Spectrum Analyser was set to zero Span and the RBW and VBW set to 3MHz. The sweep time was set to display the entire burst and triggered on the Radar Burst. The output level of the Radar Signal Generator was adjusted to give the correct level as defined in the table below with the 1dB correction accounted for. Trace data showing the used Radar Pulses was recorded.

DFS Detection Thresholds for Master Devices and Client Devices With Radar Detection

Maximum Transmit Power	Value (See Notes 1 and 2)
≥ 200 milliwatt	-64 dBm
< 200 milliwatt	-62 dBm
Note 1: This is the level at the input of the receiver assuming a 0 dBi receive antenna.	
Note 2: Throughout these test procedures an additional 1 dB has been added to the amplitude of the test transmission waveforms to account for variations in measurement equipment. This will ensure that the test signal is at or above the detection threshold level to trigger a DFS response.	

Test Equipment Setup

Setup for Client with injection at the Master







Product Service

Radar Pulse Type 1

Short Radar Pulse Characteristics

Radar Type	Pulse Width (µs)	PRI (µs)	Number Of Pulses
1	1	1428	18

Client without Radar Detection

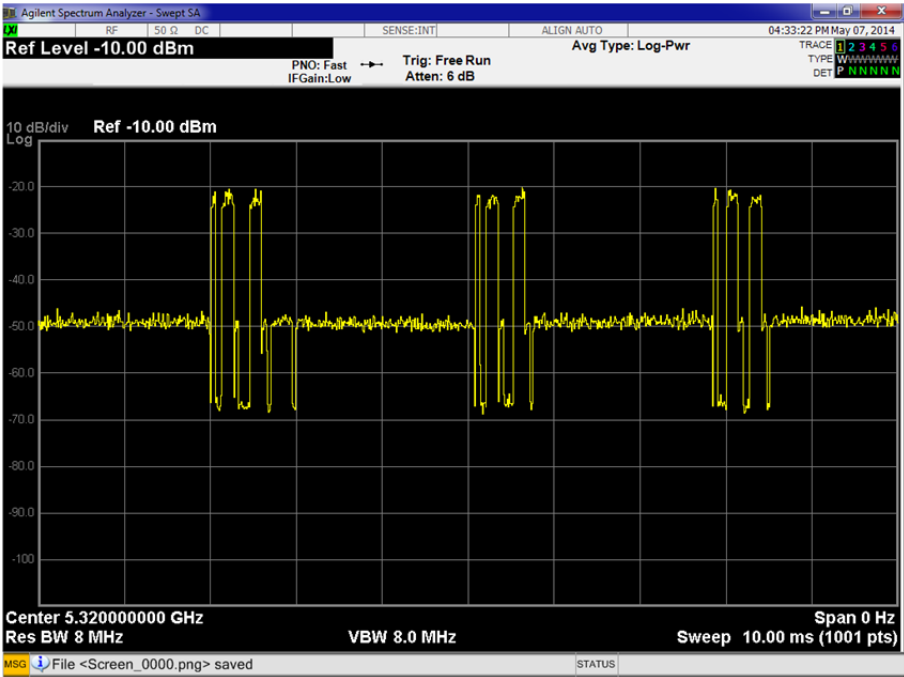
Radar Type 1 Plot





Product Service

Channel Loading Plot





### 802.11(n) 20 MHz BW

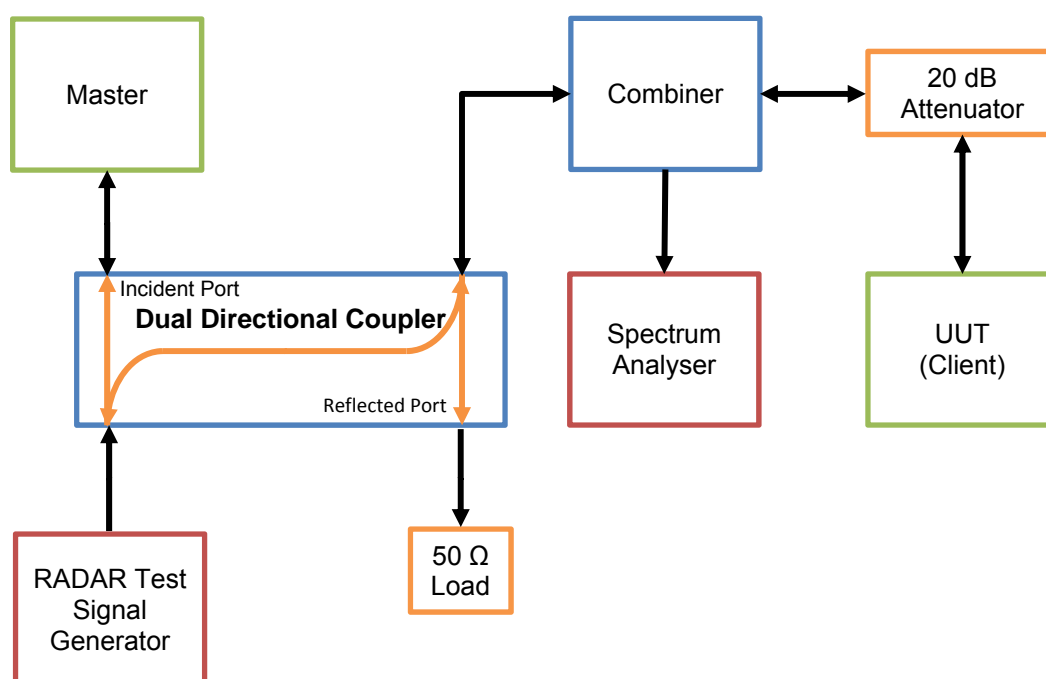
In this test equipment configuration, Radar signals are injected at the Master. The configuration ensures that the Radar pulses are received only by the Master device and not the Client. To calibrate the Radar pulses, the UUT was replaced by a Spectrum Analyser. The required Radar Waveform, (Type 1), was loaded into the Arbitrary Waveform Generator. The Spectrum Analyser was set to zero Span and the RBW and VBW set to 3MHz. The sweep time was set to display the entire burst and triggered on the Radar Burst. The output level of the Radar Signal Generator was adjusted to give the correct level as defined in the table below with the 1dB correction accounted for. Trace data showing the used Radar Pulses was recorded.

### DFS Detection Thresholds for Master Devices and Client Devices With Radar Detection

Maximum Transmit Power	Value (See Notes 1 and 2)
≥ 200 milliwatt	-64 dBm
< 200 milliwatt	-62 dBm
Note 1: This is the level at the input of the receiver assuming a 0 dBi receive antenna.	
Note 2: Throughout these test procedures an additional 1 dB has been added to the amplitude of the test transmission waveforms to account for variations in measurement equipment. This will ensure that the test signal is at or above the detection threshold level to trigger a DFS response.	

### Test Equipment Setup

#### Setup for Client with injection at the Master





Product Service

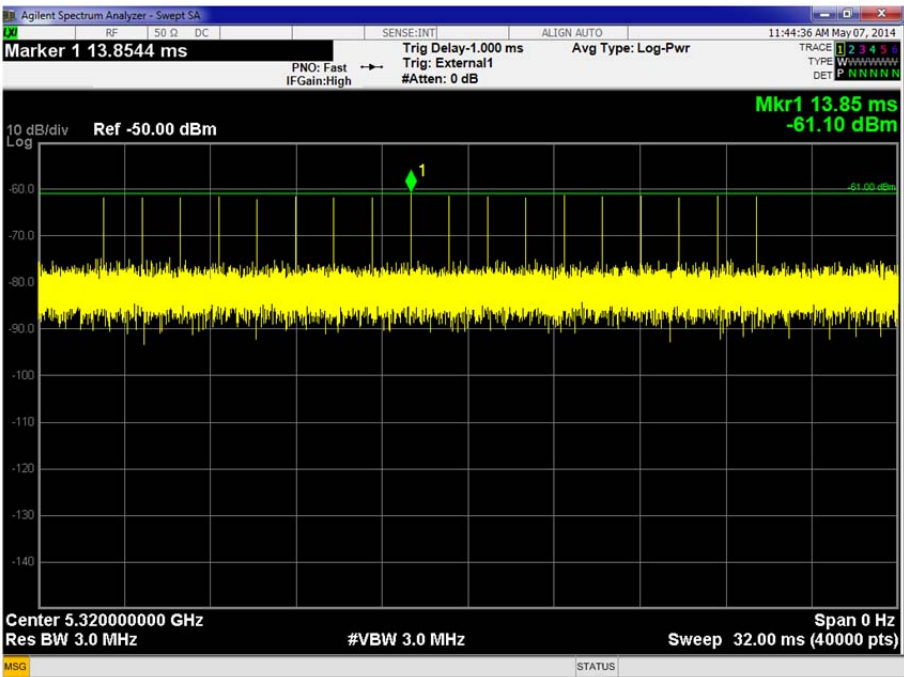
Radar Pulse Type 1

Short Radar Pulse Characteristics

Radar Type	Pulse Width (µs)	PRI (µs)	Number Of Pulses
1	1	1428	18

Client without Radar Detection

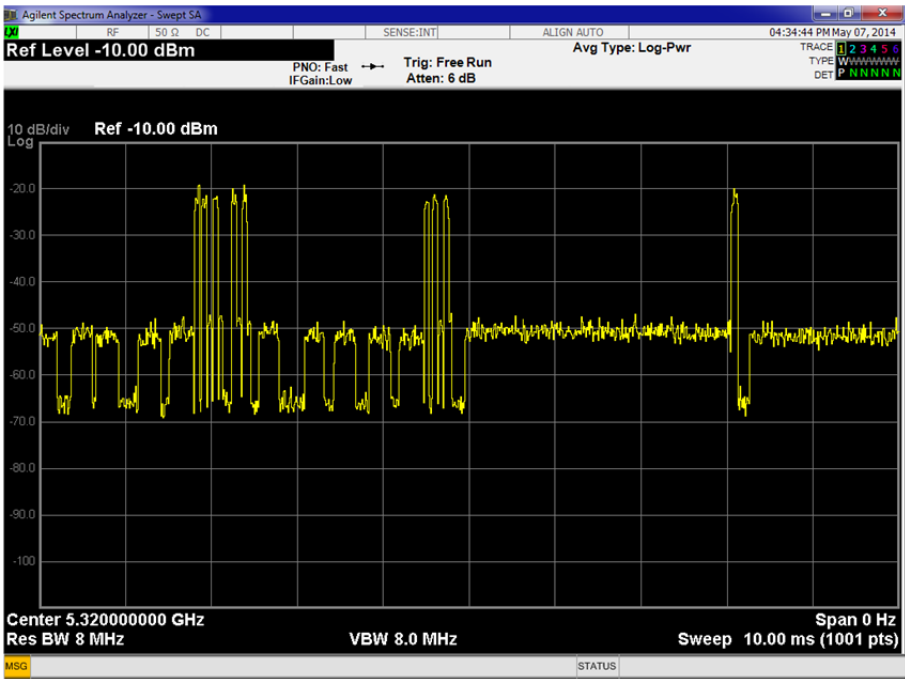
Radar Type 1 Plot





Product Service

Channel Loading Plot





### 802.11(n) 40 MHz BW

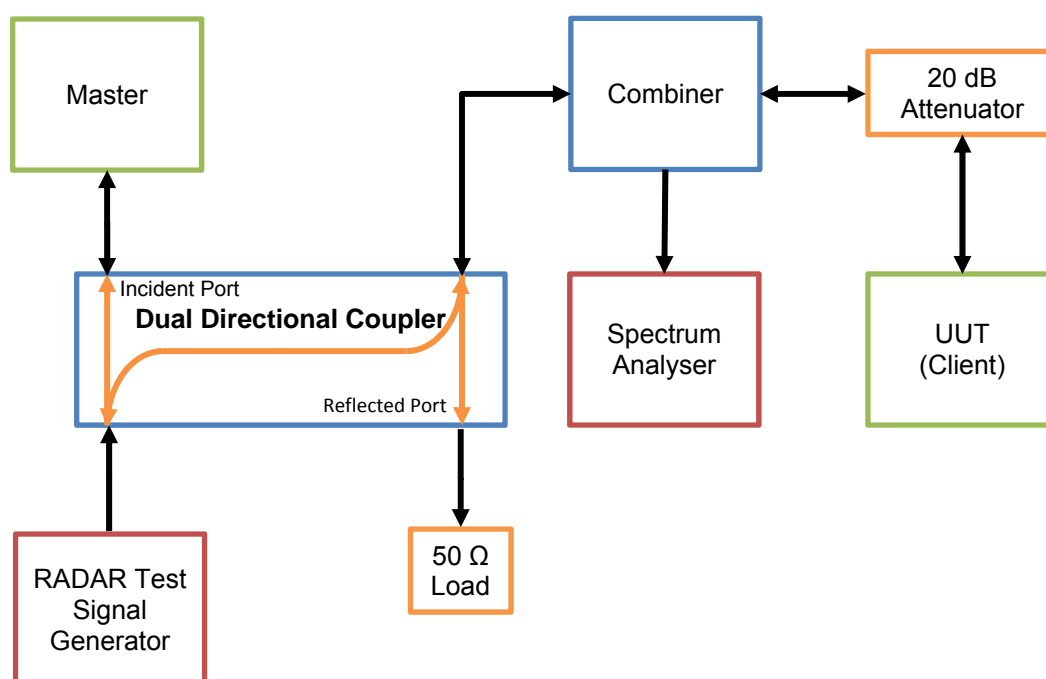
In this test equipment configuration, Radar signals are injected at the Master. The configuration ensures that the Radar pulses are received only by the Master device and not the Client. To calibrate the Radar pulses, the UUT was replaced by a Spectrum Analyser. The required Radar Waveform, (Type 1), was loaded into the Arbitrary Waveform Generator. The Spectrum Analyser was set to zero Span and the RBW and VBW set to 3MHz. The sweep time was set to display the entire burst and triggered on the Radar Burst. The output level of the Radar Signal Generator was adjusted to give the correct level as defined in the table below with the 1dB correction accounted for. Trace data showing the used Radar Pulses was recorded.

### DFS Detection Thresholds for Master Devices and Client Devices With Radar Detection

Maximum Transmit Power	Value (See Notes 1 and 2)
≥ 200 milliwatt	-64 dBm
< 200 milliwatt	-62 dBm
Note 1: This is the level at the input of the receiver assuming a 0 dBi receive antenna.	
Note 2: Throughout these test procedures an additional 1 dB has been added to the amplitude of the test transmission waveforms to account for variations in measurement equipment. This will ensure that the test signal is at or above the detection threshold level to trigger a DFS response.	

### Test Equipment Setup

#### Setup for Client with injection at the Master





Product Service

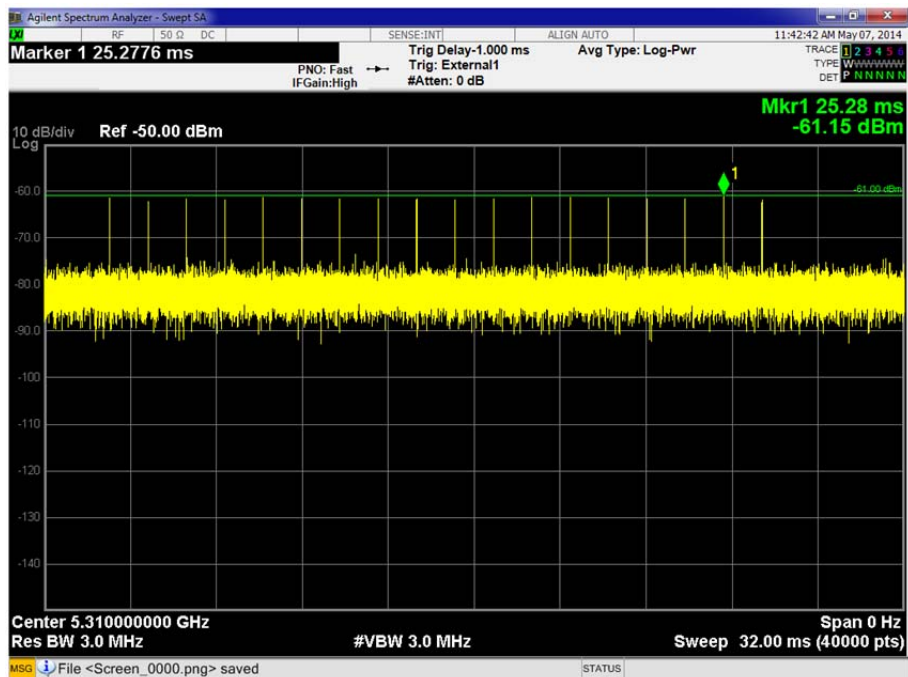
### Radar Pulse Type 1

#### Short Radar Pulse Characteristics

Radar Type	Pulse Width (μs)	PRI (μs)	Number Of Pulses
1	1	1428	18

#### Client without Radar Detection

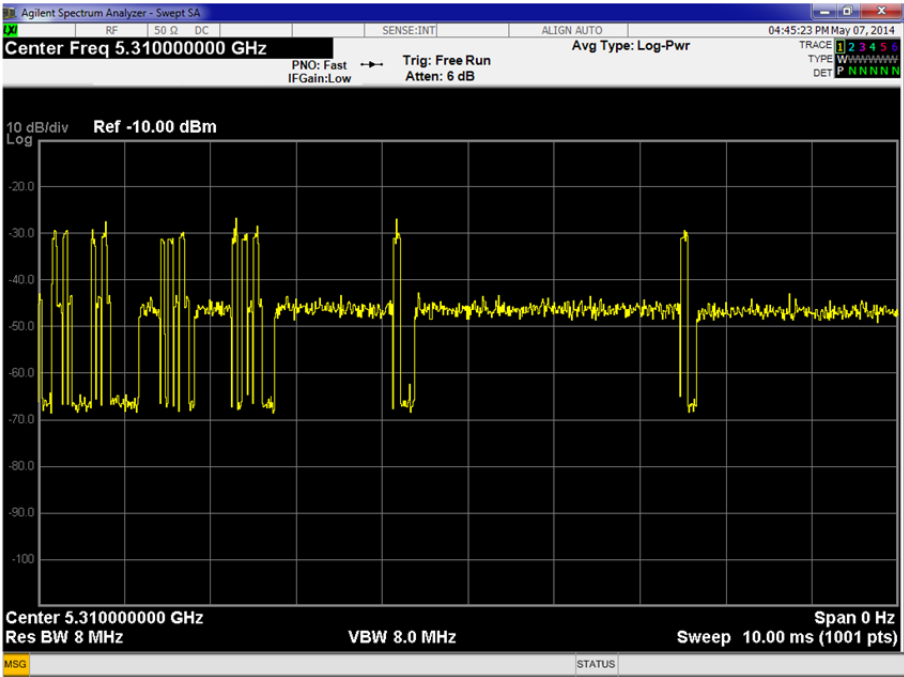
#### Radar Type 1 Plot





Product Service

Channel Loading Plot







Product Service

## **2.2 IN-SERVICE MONITORING**

### **2.2.1 Specification Reference**

FCC CFR 47 Part 15E and FCC 06-96, Clause 15.407 (h)(2)(iii)

### **2.2.2 Equipment Under Test and Modification State**

Inari8-3GAN-C1 S/N: IMEI 866274011528092 - Modification State 0

### **2.2.3 Date of Test**

7 May 2014

### **2.2.4 Test Equipment Used**

The major items of test equipment used for the above tests are identified in Section 3.1.

### **2.2.5 Test Procedure**

The Channel Closing Transmission Time and Channel Move Time of the UUT were measured in accordance to the methods described in FCC 06-96 (2006) and assessed against the requirements of FCC 47 CFR 15.407 (h)(2)(iii).

The UUT is a client device without radar detection and all testing was performed using conducted methods. The UUT was associated with an FCC Approved Master device FCC ID: UZ7MB82. An ancillary computer was connected to the Master device using an ethernet Local Area Network. The computer was configured to act as a file server to allow the FCC designated video to be streamed from the Master device to the UUT.

The radar signal calibration procedure was conducted according to the methods described within FCC 06-96 (2006) clause 7.5. A spectrum analyzer was used to establish the test signal level for radar types utilised during testing. During this process, there were no transmissions by either the Master device or UUT. The spectrum analyzer was switched to the zero span (time domain) mode at the frequency of the Radar Waveform generator. The peak detector function of the spectrum analyzer was utilized. The spectrum analyzer resolution bandwidth (RBW) and video bandwidth (VBW) were set to 3 MHz. The radar test signal level was calibrated for each operating channel to a level of the DFS Detection Threshold + 1dB; yielding a radar signal level of -61 dBm at the Master device antenna port.

The channel closing transmission and channel move times were measured using the methods described within FCC 06-96 (2006) clause 7.8.3. The UUT was associated with the Master device and was set to operate on a single channel configuration in the 5250 to 5350 MHz band. The designated FCC MPEG test file was streamed from the Master device and the UUT on the operating channel for the entire period of the test. The UUT utilized a software application "VideoLAN VLC Media Player version 2.1.3" to stream and play the test file from the Master device.

Using the Aeroflex DFS test system signal generator, a radar type 1 test signal was injected into the master device antenna port on the operating channel. The Aeroflex DFS test system signal analyser measurement sweep was triggered upon the radar injection to the Master device and resultant data of the radar burst, Master device and UUT was collected.



Product Service

A level detection threshold was set on the Aeroflex DFS test system signal analyser; such that all signals from the UUT were assessed using the Aeroflex DFS test system and both the channel closing transmission time and channel move time were measured and recorded.

The markers on the captured trace data correspond to the following time periods:

- Red - End of the injected radar burst: Time T1
- Purple - End of the Channel Closing Transmission Time: Time T1 + 200 ms
- Yellow - End of the Channel Move Time: Time T1 + 10 seconds

2.2.6 Environmental Conditions

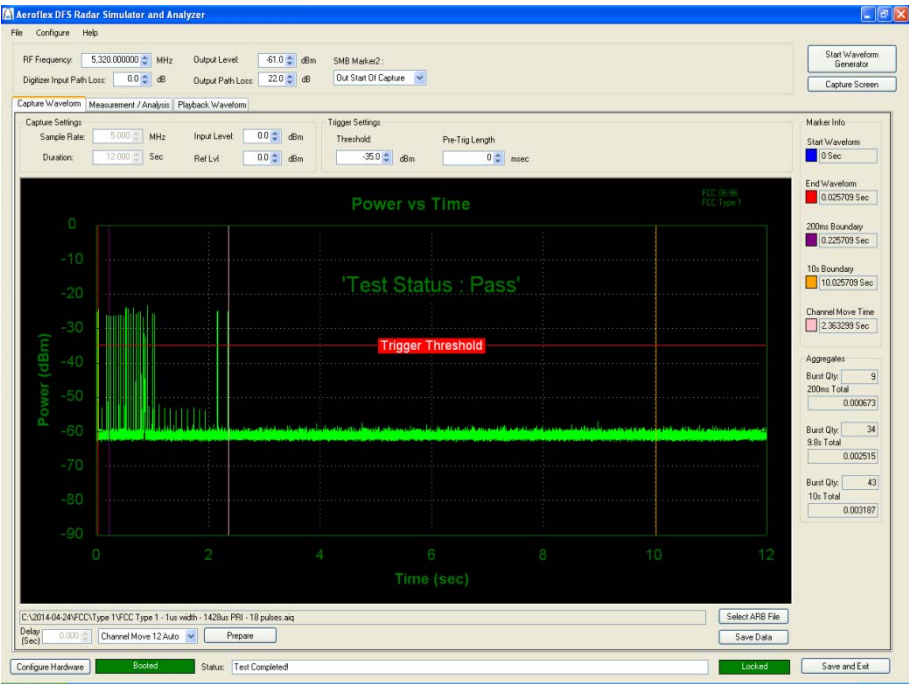
Ambient Temperature 22.8°C  
Relative Humidity 41.6%

2.2.7 Test Results

802.11(a)

Channel Move Time	2.363 seconds
Channel Closing Time (Aggregate Time During 200ms)	0.673 ms
Channel Closing Time (Aggregate Time During +200ms to 10s)	2.515 ms
Channel Closing Time (Aggregate Time During 10s)	3.187 ms

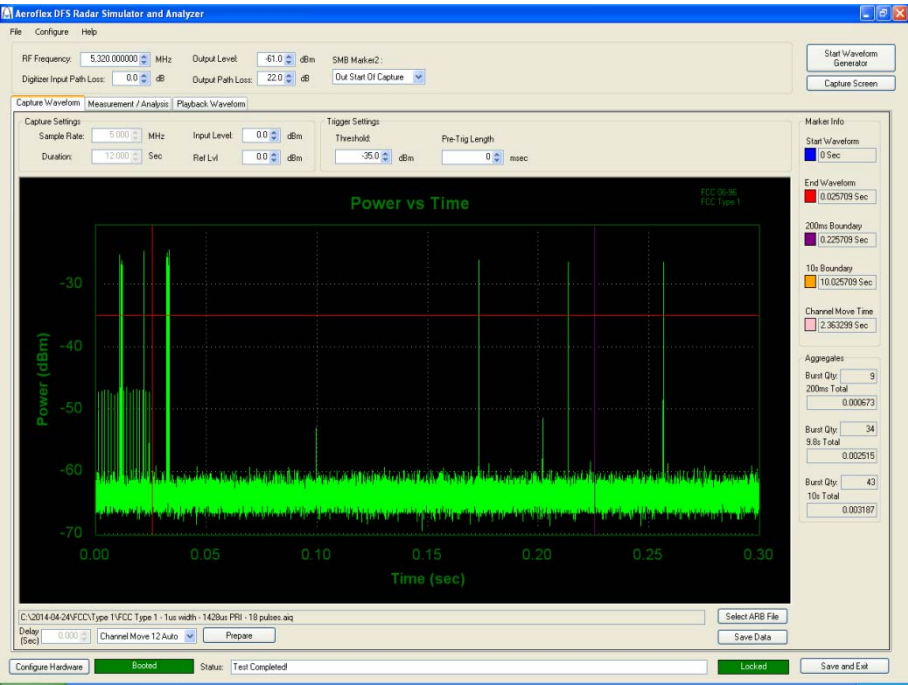
Overall Power vs Time Display, showing channel closing and move time





Product Service

Channel Closing Transmission Time, RADAR burst, Master device and UUT signalling



Limit Clause 15.407 (h)(2)(iii) and FCC 06-96, Table 4

Channel Move Time	<10s
Channel Closing Time (Aggregate Time During 200ms)	<200ms
Channel Closing Time (Aggregate Time During +200ms to 10s)	<60ms

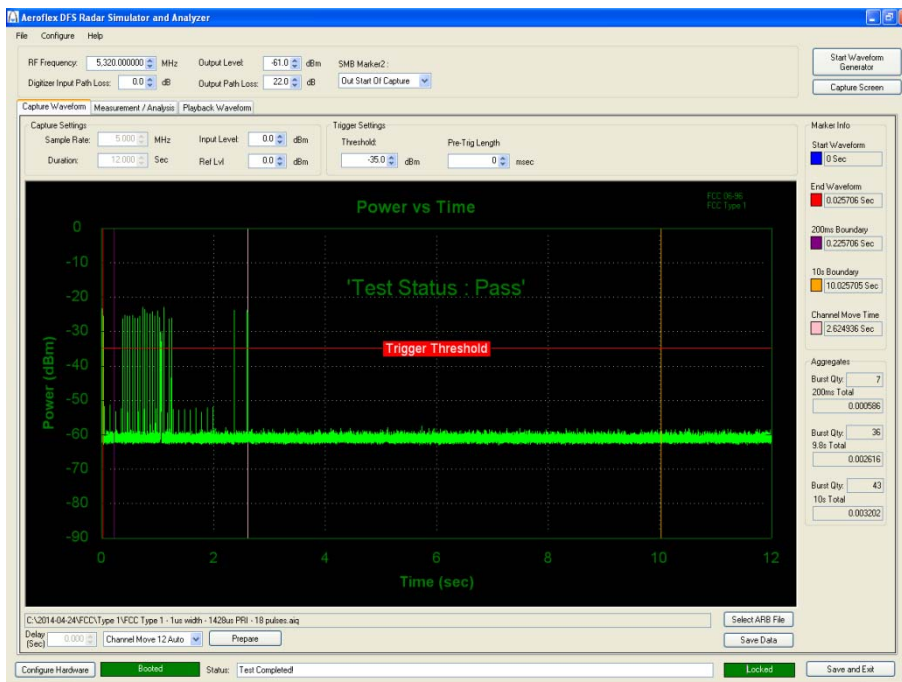


Product Service

### 802.11(n) 20 MHz BW

Channel Move Time	2.625 seconds
Channel Closing Time (Aggregate Time During 200ms)	0.586 ms
Channel Closing Time (Aggregate Time During +200ms to 10s)	2.616 ms
Channel Closing Time (Aggregate Time During 10s)	3.202 ms

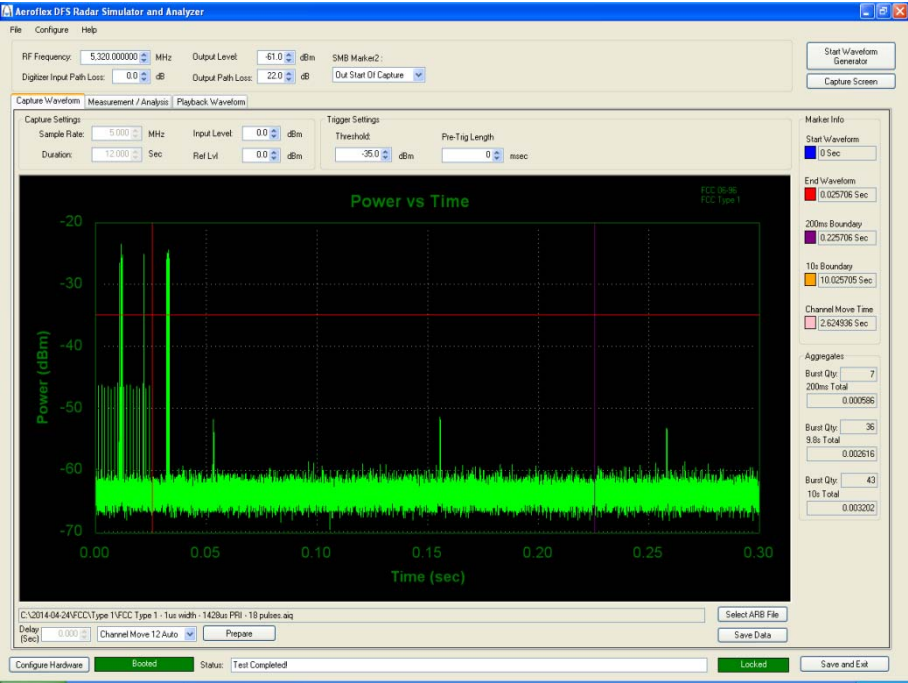
### Overall Power vs Time Display, showing channel closing and move time





Product Service

Channel Closing Transmission Time, RADAR burst, Master device and UUT signalling



Limit Clause 15.407 (h)(2)(iii) and FCC 06-96, Table 4

Channel Move Time	<10s
Channel Closing Time (Aggregate Time During 200ms)	<200ms
Channel Closing Time (Aggregate Time During +200ms to 10s)	<60ms

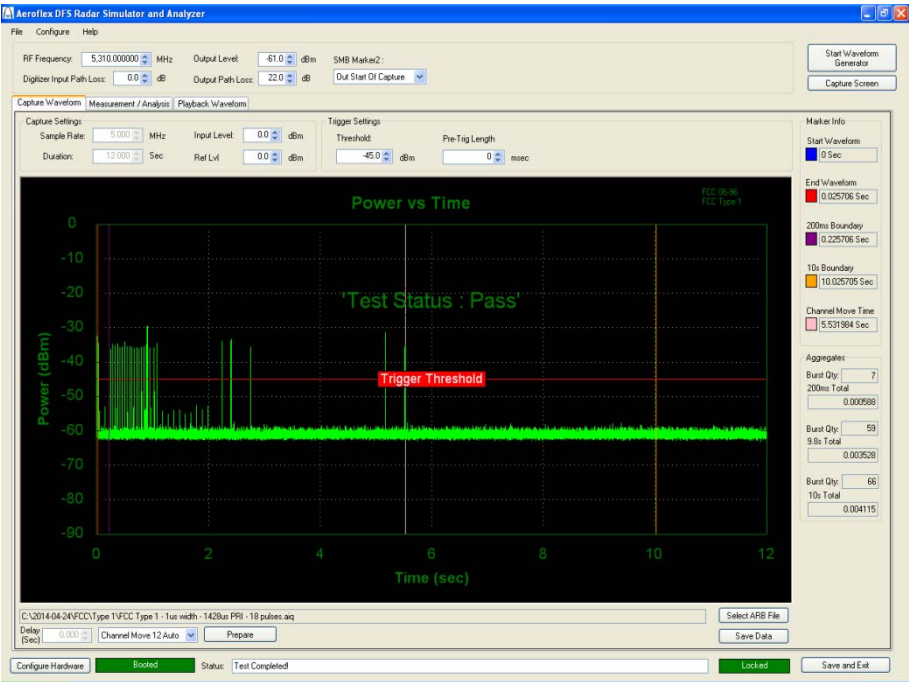


Product Service

802.11(n) 40 MHz BW

Channel Move Time	5.532 seconds
Channel Closing Time (Aggregate Time During 200ms)	0.588 ms
Channel Closing Time (Aggregate Time During +200ms to 10s)	3.528 ms
Channel Closing Time (Aggregate Time During 10s)	4.115 ms

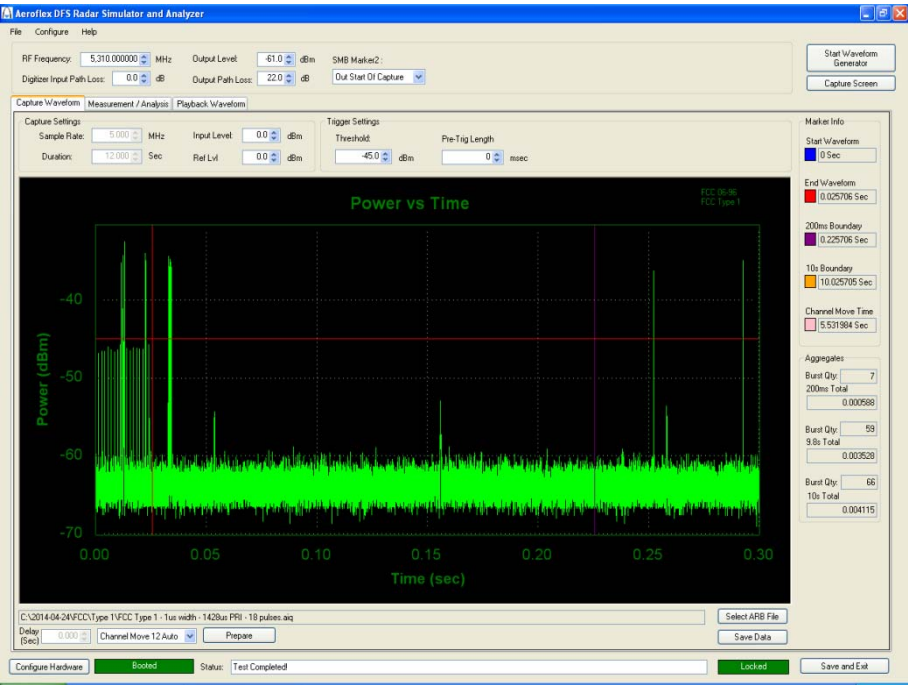
Overall Power vs Time Display, showing channel closing and move time





Product Service

Channel Closing Transmission Time, RADAR burst, Master device and UUT signalling



Limit Clause 15.407 (h)(2)(iii) and FCC 06-96, Table 4

Channel Move Time	<10s
Channel Closing Time (Aggregate Time During 200ms)	<200ms
Channel Closing Time (Aggregate Time During +200ms to 10s)	<60ms



Product Service

### **SECTION 3**

#### **TEST EQUIPMENT USED**





Product Service

### 3.1 TEST EQUIPMENT USED

List of absolute measuring and other principal items of test equipment.

Instrument	Manufacturer	Type No.	TE No.	Calibration Period (months)	Calibration Due
<b>Section 2.2 - In-Service Monitoring</b>					
White Gold	Multimeter	WG022	190	12	28-Oct-2014
Directional Coupler	Hewlett Packard	11692D	451	12	2-Sep-2014
20dB/2W Attenuator	Narda	4772-20	461	-	TU
Power Passport: 50, 60 or 400Hz Power Supply	Behlman Hauppauge	P1350-CE	1434	-	TU
Mains Voltage Monitor	TUV SUD Product Service	MVM1	1378	12	6-Sep-2014
Hygrometer	Rotronic	I-1000	2891	12	8-Jul-2014
Signal Analyser	Rohde & Schwarz	FSQ 26	3545	12	4-Jul-2014
PXI Digital RF Signal Generator	Aeroflex	3025	4015	24	3-Oct-2015
1800-6000 MHz Power Splitter	Mini-Circuits	ZN2PD-63-S+	4056	-	O/P Mon

TU – Traceability Unscheduled

O/P MON – Output Monitored with Calibrated Equipment



### 3.2 SUPPORT TEST EQUIPMENT

Instrument	Manufacturer	Type No.	Serial Number
DFS Radar Simulator Analyser Software	Aeroflex Ltd	Version 2.1.2	-
Router	Edimax	BR-642n v2.0	BR6424N07CA01367
802.11a/n Access Point	Motorola	AP-650	10055522200026
Personal Computer	Dell Inc.	DCSM	36DJP2J



Product Service

### 3.3 MEASUREMENT UNCERTAINTY

For a 95% confidence level, the measurement uncertainties for defined systems are:-

Test Discipline	MU
In-Service Monitoring	Time: $\pm 0.47 \%$ Power: $\pm 1.29 \text{ dB}$



Product Service

## **SECTION 4**

### **PHOTOGRAPHS**

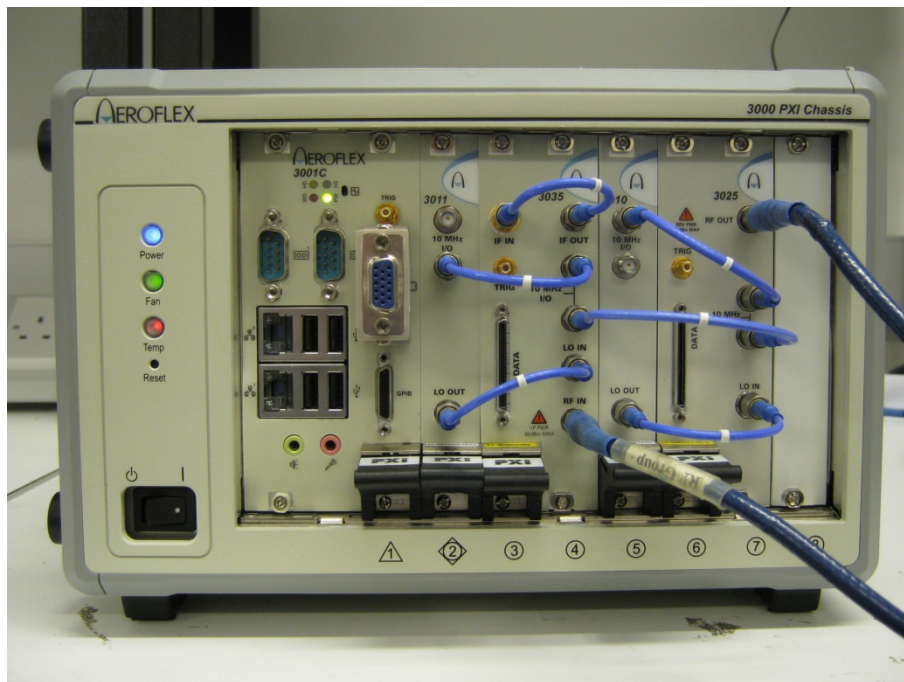


Product Service

#### 4.1 TEST SET-UP PHOTOGRAPHS

See test set-up photographs exhibit “75926145 FCC Set Up Photos.pdf”.

#### 4.2 DFS TEST EQUIPMENT



Test Set Up



Product Service

## **SECTION 5**

### **ACCREDITATION, DISCLAIMERS AND COPYRIGHT**



Product Service

## 5.1 ACCREDITATION, DISCLAIMERS AND COPYRIGHT



This report relates only to the actual item/items tested.

Our UKAS Accreditation does not cover opinions and interpretations and any expressed are outside the scope of our UKAS Accreditation.

Results of tests not covered by our UKAS Accreditation Schedule are marked NUA  
(Not UKAS Accredited).

This report must not be reproduced, except in its entirety, without the written permission of  
TÜV SÜD Product Service

© 2014 TÜV SÜD Product Service