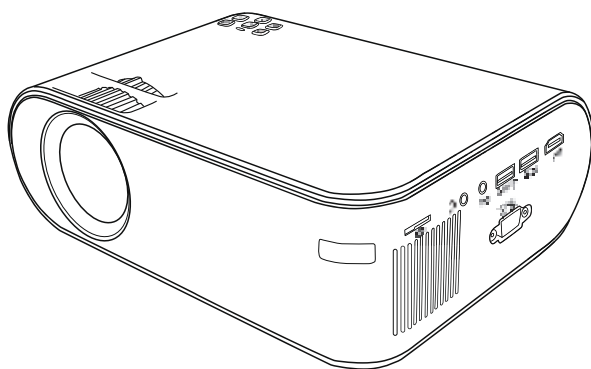




SERVICE SUPPORT

Please contact the Seller Customer Service on Amazon

USER'S MANUAL



背页

正页

扉页

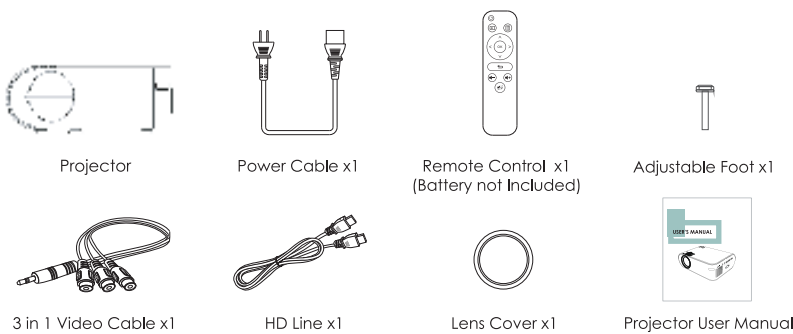
English

Contact Us:

If you have any suggestions or if you run into any problems, please feel free to contact our support on Amazon

We are 24-7-365 there for you

Package Include



Tips:

1. Blurry Image

- First, correct the keystone to a rectangle.
- Second, rotate the focus button to gain the best clarity.

*Effective Projection Distance: 2.6-12.6feet

2. Mounting Hole

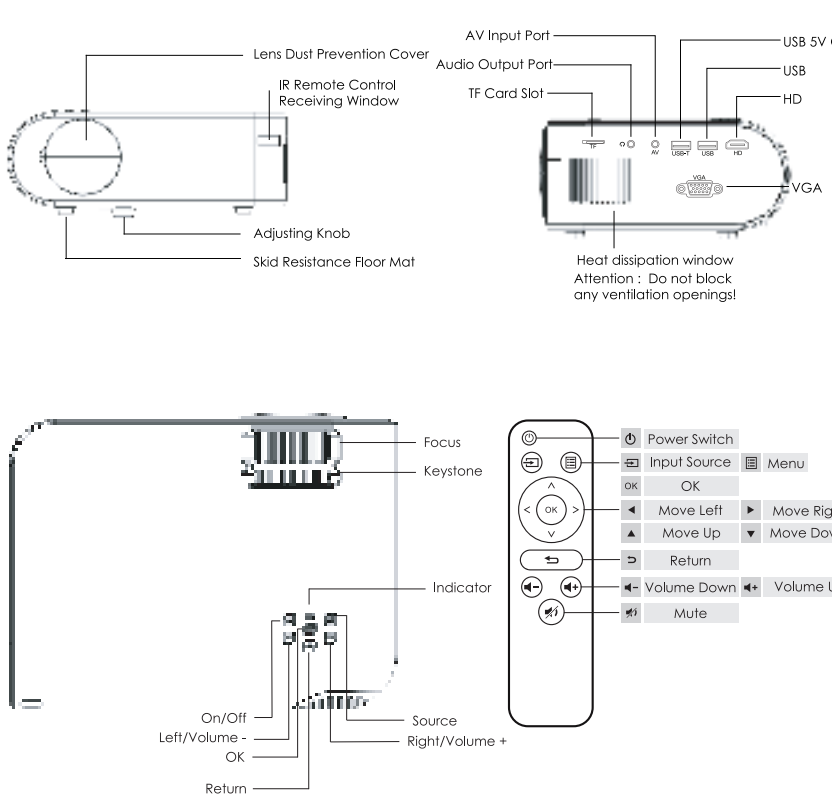
Adapting a single mounting hole duck-usage design, the projector is compatible with the standard camera tripod and 1/4 inch screw projector tripod stand. Meanwhile, you can rotate up and down the screw to meet different height needs.

3. Attention:

Various types of mobile phones on the market and the motherboard cannot support all models of mobile phones, so if you connect your phone to the projector via cable, the audio will be played on your phone. Only connect your phone to the projector via wireless, the audio will be played on your projector.

EN/01

Structure Diagram

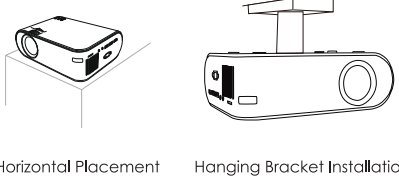


02/EN

Install and Debug

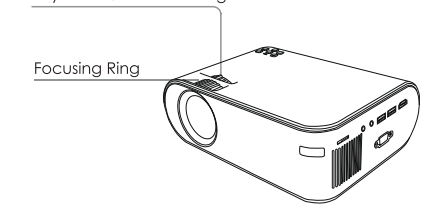
1. Install the Projector

You can choose to place the projector on the horizontal plane or attach it to a hanging bracket.



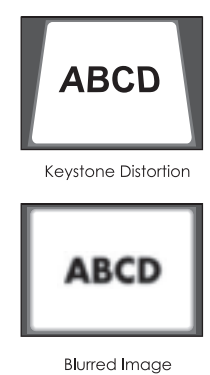
! Attention:
The hanging bracket is an accessory that is not supplied.

2. Adjust the Focal Length



Adjust the projector's keystone correction ring and the focusing ring to obtain a satisfactory image. It is recommended to adjust the keystone correction ring in case of keystone distortion in the image (Figure 1 on the right). When the screen image is blurred (Figure 2 on the right), it is recommended to adjust the focus ring to improve the picture definition. Please move forward or backward proportionally in case the adjustment is unable to obtain the satisfactory definition.

Distortion Image Diagram

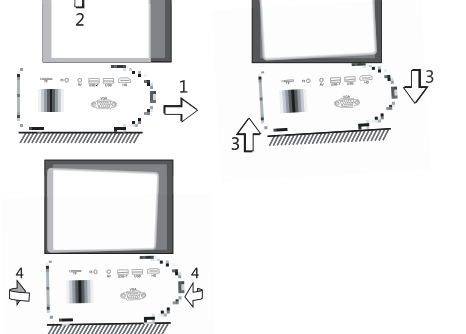


EN/03

Install and Debug

3. Adjust the image projected on the screen

Check the horizontal and vertical screen settings



(1) Please move the project to one side in case of left or right screen offsets (Align the screen center to the projector lens center).
(2) Please adjust with the front adjuster for vertical offsets.
(3) Please place the projector on a horizontal plane for angle offsets.
(4) The projection screen as shown in the figure indicates the projector's location to align with the screen.

4. Safe Shutdown

- Press the key on the remote control to shutdown the projector.
- Press and hold the key on the control panel to shutdown the projector.
- Press the soft key on the Port and shutdown the projector according to the prompt (only effective for smart Android version).
- Please unplug the power cord after the projector shutdowns to save energy. Press and hold the key on the control panel to shutdown the projector.

04/EN

Projection Settings

1. Options related with "Audio" are set in this screen.

- Audio:** Set the bass & treble ratio of the audio. "Standard", "Music", "User", "Sports" and "Video" modes are default.
- Audio Mode:** Set the gain difference of left and right sound channels.
- Balance:** The system will automatically adjust the volume to the appropriate range with automatic volume enabled.
- Automatic Volume:** Set the surround sound effect of the audio.
- Surround:**

2. Options related with "Time" are set in this screen.

- Clock:** Set the system time which is the reference for using other time related functions.
- Shutdown Time:** Set the automatic shutdown time that the system will automatically shutdown.
- Startup Time:** Set the automatic startup time that the system will automatically startup.
- Sleep Timing:** Set the system's sleep time. Then the system will automatically sleep to save energy.
- Automatic Sleep:** Enable/disable automatic sleep function the system will automatically sleep to save energy when no change occurs on the screen for a period.

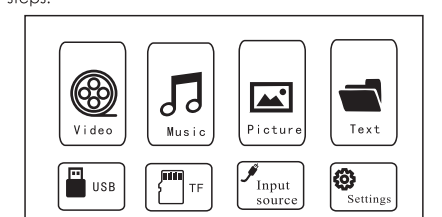
3. Options related with "Settings" are set in this screen.

- Settings:** Set the language in the system with Chinese Simplified as default.
- Menu Language:** Enable/disable the menu display time.
- Menu duration:** Update the system software version (USB storage device with correct software upgrading package needs meeting).
- Software Upgrade:** Restore the factory default settings.
- Restore Settings:** View current software version.
- Software Version:**

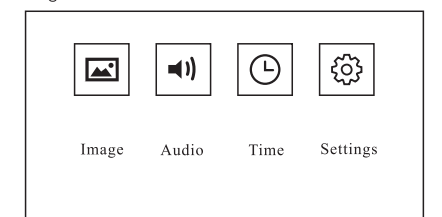
EN/05

Projection Settings

Get a better viewing effect with appropriate settings. The main content of the projection can be set in the following steps:



(1) "Image", "Sound", "Time", "Settings" can be set. Press the "<" and ">" on the operation panel to select the range of settings.

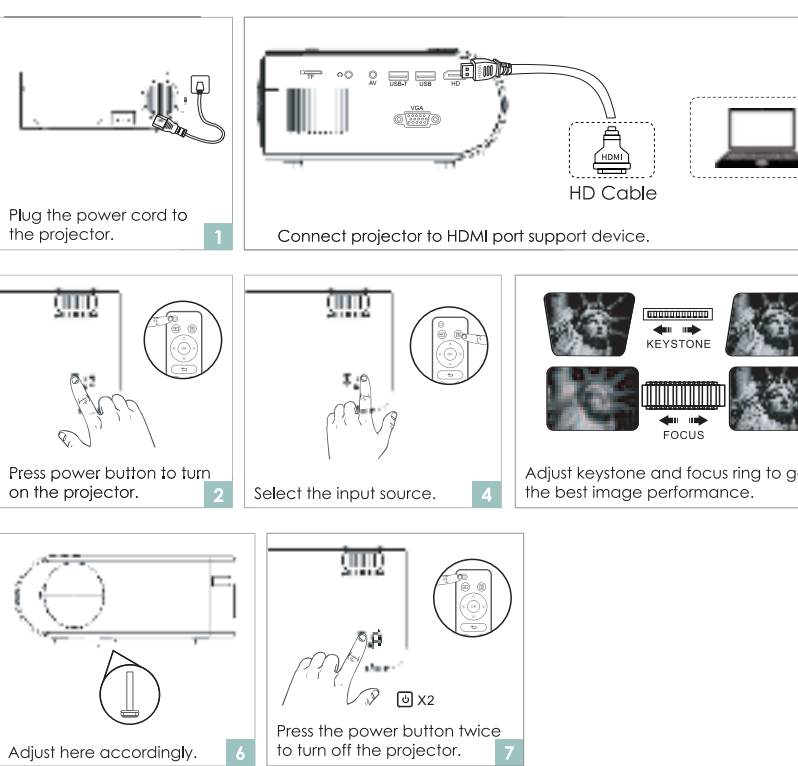


(2) Options related with "Image" are set in this screen.

- Image:** "Standard", "Bird Report", "User", "Video" and other image modes default to fit a variety of projection.
- Image mode:** "Preposition", "Postposition", "Hanging Preposition", "Hanging postposition" and other modes are default for different installation modes.
- Projection Mode:** "Standard", "Cool", "User" and "Warm" and other multiple color temperature modes are default for different colors preferences.
- Projection Ratio:** Set the scaling of the image.
- Noise Reduction:** Set the noise reduction strength of the screen.

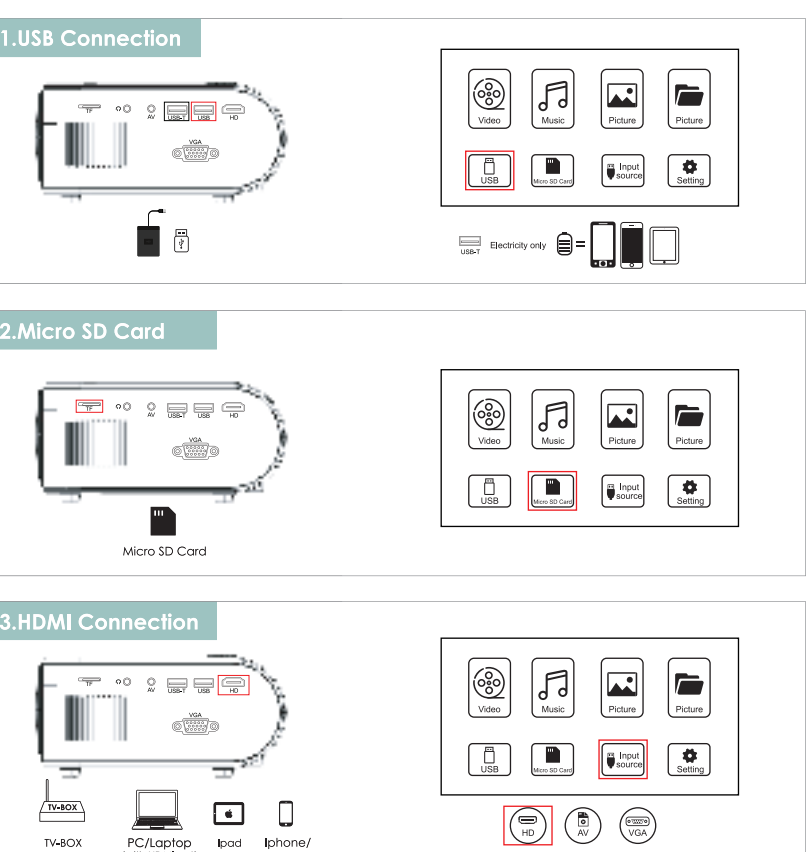
06/EN

First Use



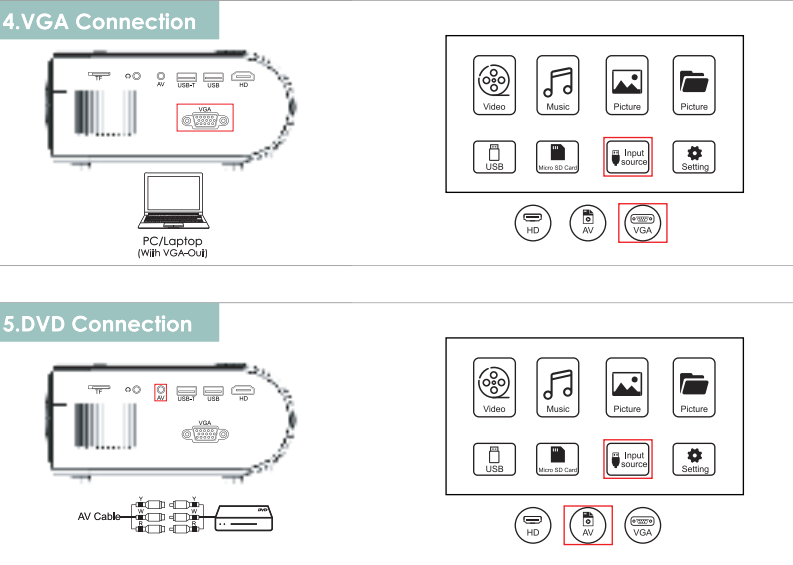
EN/07

Input Source



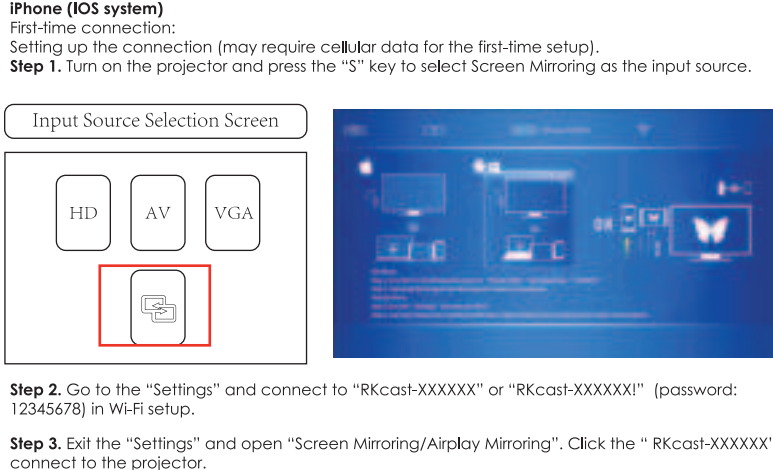
08/EN

Input Source



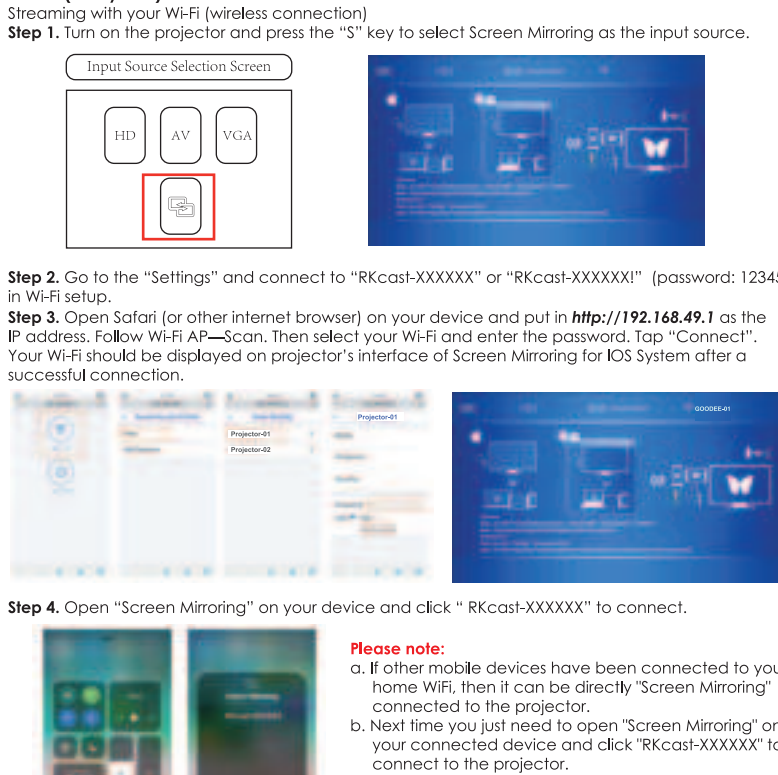
EN/09

Instruction for Wireless Cellphone Connection (Screen Mirroring)



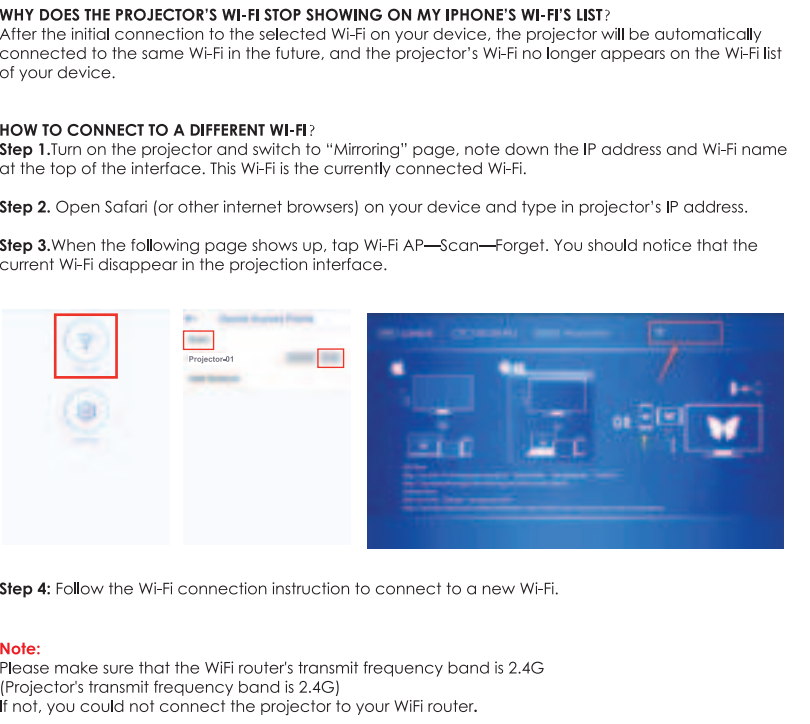
10/EN

Instruction for Wireless Cellphone Connection (Screen Mirroring)



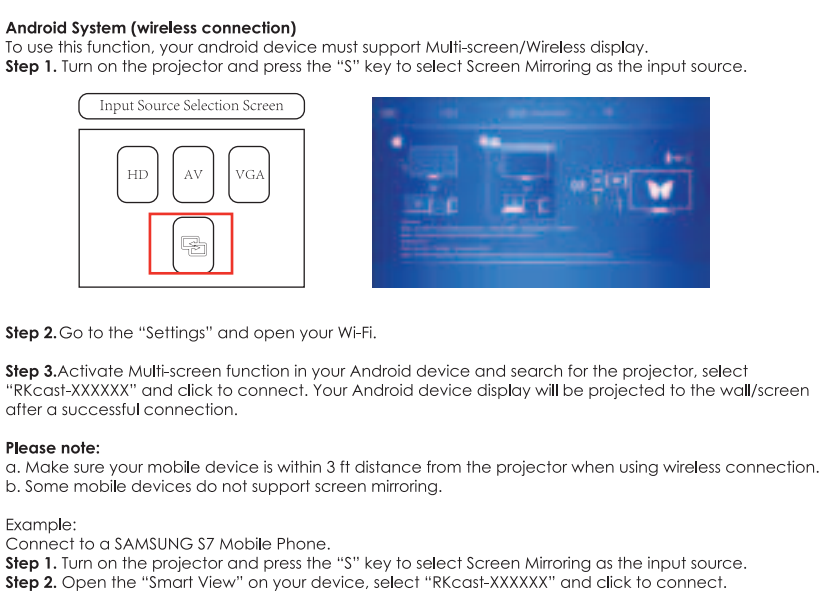
EN/11

Instruction for Wireless Cellphone Connection (Screen Mirroring)



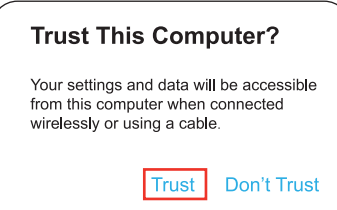
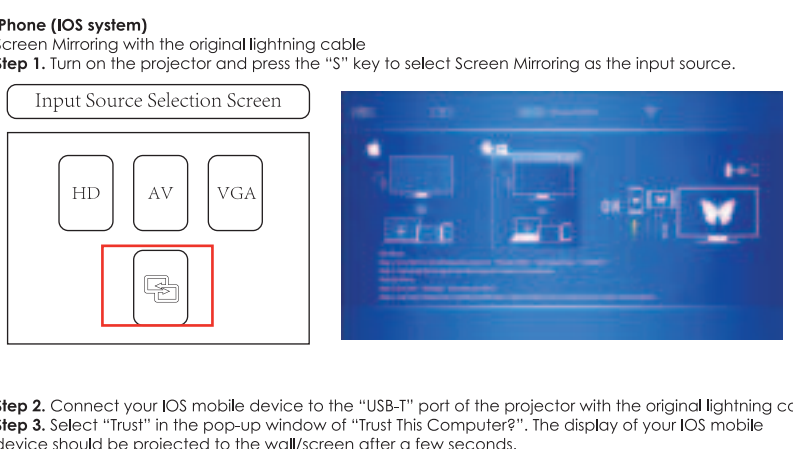
12/EN

Instruction for Wireless Cellphone Connection (Screen Mirroring)



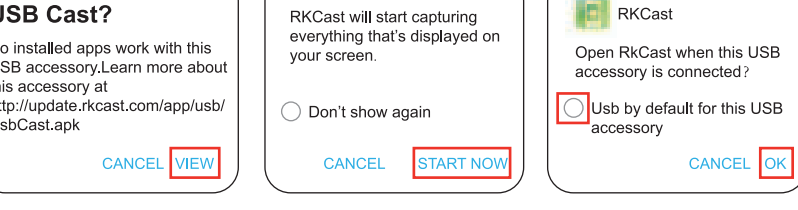
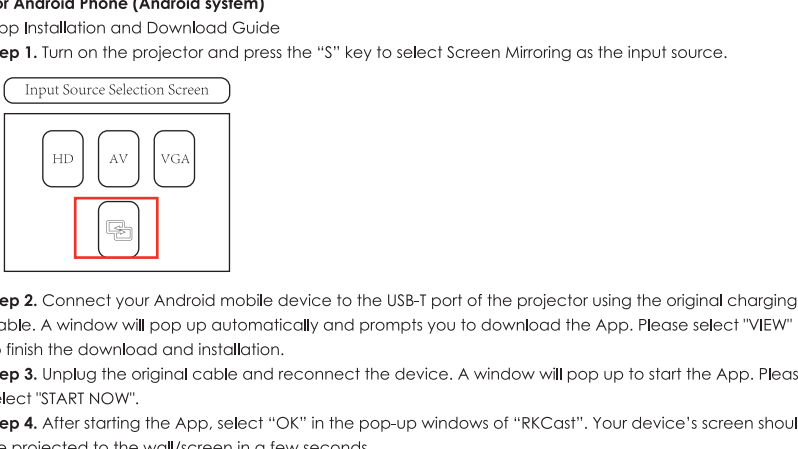
EN/13

Steps to Connect through Charging Cable



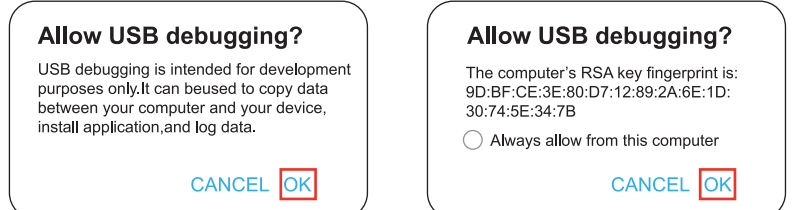
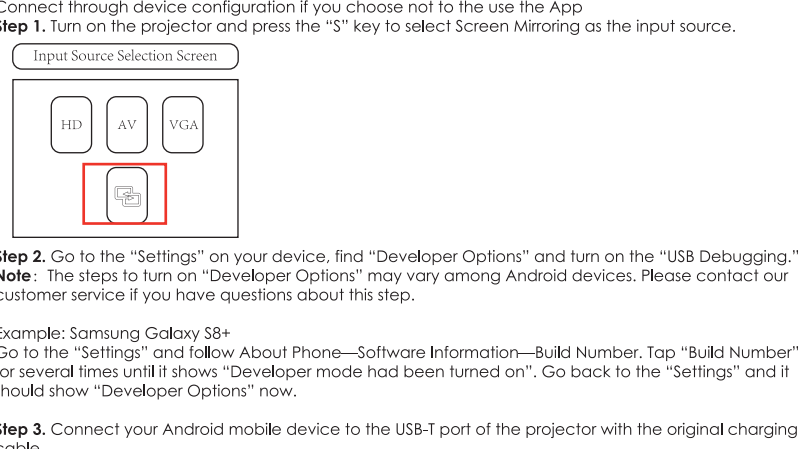
14/EN

Steps to Connect through Charging Cable



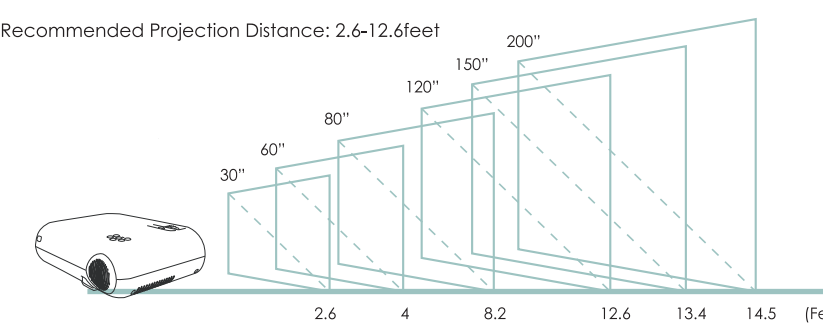
EN/15

Steps to Connect through Charging Cable



16/EN

Projection Distance & Size



Multimedia Support Play Format

File	Format	Suffix	Decoding
Audio play	MP3	mp3	
	M4A	mp4	
	MP4	mp4	
	BMP	png	
Picture play	JPEG	jpg	
	PNG	png	
	MPEG1	.DAT, .MPEG, .MPEG	
	MPEG2	.MPEG	
	MPEG4	.AVI, .MP4	DVX, XVD
	RM, RMVB	.RM, .RMVB	RV8, RV9, RV10
	H264	.MKV, .MOV	H.264
	MJPEG	.AVI	
	DVIX	.DVIX, .AVI	MPEG, DVIX, H264
	FLV	.FLV	H.264

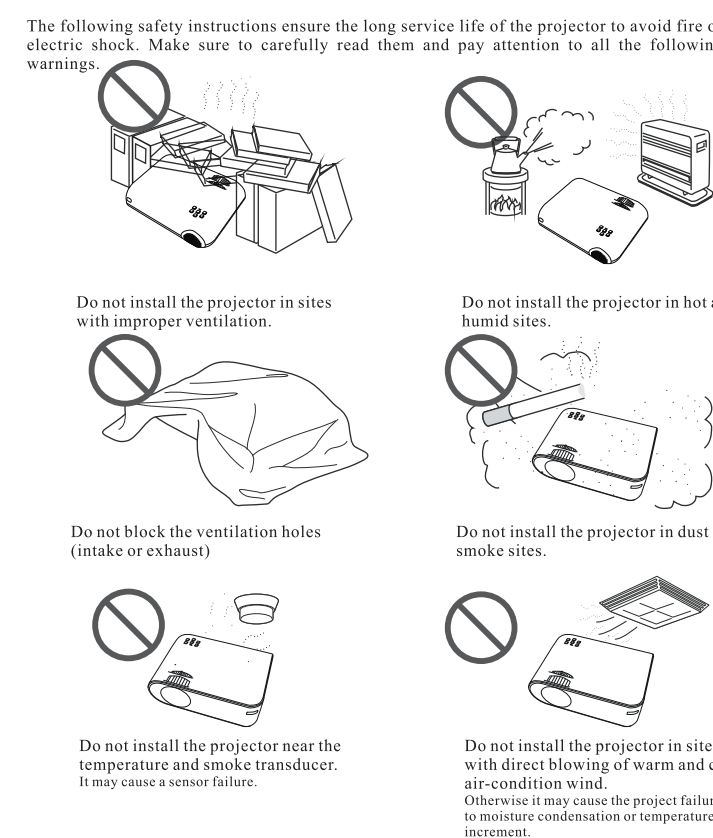
EN/17

Parameters

Product Model	U2	Color	1677K
Image System	LCD	Light Source	LED
Native Resolution	800*480pixels	Aspect Ratio	16:9/4:3
Image Size	30"-200"	Projection distance	2.6-14.5feet
Projection Mode	Front / Rear / Ceiling	Keystone	±15° Correction
Speaker	4D 3W	Power	AC100-240V
Weight	2.2Pound	Size	8.6*6.5*3inch
Input	AV*1, USB*1, HD*1	Output	Audio *1 / USB *11
	VGA*1, Micro SD Card*1		

18/EN

Important safety considerations



EN/19

FCC Statement
This device complies with part 15 of the FCC rules. Operation is subject to the following two conditions:
(1) this device may not cause harmful interference, and
(2) this device must accept any interference received, including interference that may cause undesired operation.
Changes or modifications not expressly approved by the party responsible for compliance could void the user's authority to operate the equipment.
NOTE: This equipment has been tested and found to comply with the limits for a Class B digital device, pursuant to part 15 of the FCC Rules. These limits are designed to provide reasonable protection against harmful interference in a residential installation. This equipment generates uses and can radiate radio frequency energy and, if not installed and used in accordance with the instructions, may cause harmful interference to radio communications. However, there is no guarantee that interference will not occur in a particular installation. If this equipment does cause harmful interference to radio or television reception, which can be determined by turning the equipment off and on, the user is encouraged to try to correct the interference by one or more of the following measures:
- Reorient or relocate the receiving antenna.
- Increase the separation between the equipment and receiver.
- Connect the equipment into an outlet on a circuit different from that to which the receiver is connected.
- Consult the dealer or an experienced radio/TV technician for help.
Radiation Exposure Statement
This equipment complies with FCC radiation exposure limits set forth for an uncontrolled environment. This equipment should be installed and operated with minimum distance 20cm between the radiator and your body.
This transmitter must not be co-located or operating in conjunction with any other antenna or transmitter.