

## ANNEX 3 – INTERNAL PHOTOGRAPHS



Lipman USA, Inc.  
Hand Held Point of Sale Device, Model NURIT 8000S  
FCC ID: O2SNURIT8000SWD  
IC: 4804A-N8000SWD

### ANNEX 3 – INTERNAL PHOTOGRAPHS



Lipman USA, Inc.  
Hand Held Point of Sale Device, Model NURIT 8000S  
FCC ID: O2SNURIT8000SWD  
IC: 4804A-N8000SWD

### ANNEX 3 – INTERNAL PHOTOGRAPHS



Lipman USA, Inc.  
Hand Held Point of Sale Device, Model NURIT 8000S  
FCC ID: O2SNURIT8000SWD  
IC: 4804A-N8000SWD

## ANNEX 3 – INTERNAL PHOTOGRAPHS



Lipman USA, Inc.  
Hand Held Point of Sale Device, Model NURIT 8000S  
FCC ID: O2SNURIT8000SWD  
IC: 4804A-N8000SWD

## ANNEX 3 – INTERNAL PHOTOGRAPHS



Lipman USA, Inc.  
Hand Held Point of Sale Device, Model NURIT 8000S  
FCC ID: O2SNURIT8000SWD  
IC: 4804A-N8000SWD

### ANNEX 3 – INTERNAL PHOTOGRAPHS



Lipman USA, Inc.  
Hand Held Point of Sale Device, Model NURIT 8000S  
FCC ID: O2SNURIT8000SWD  
IC: 4804A-N8000SWD

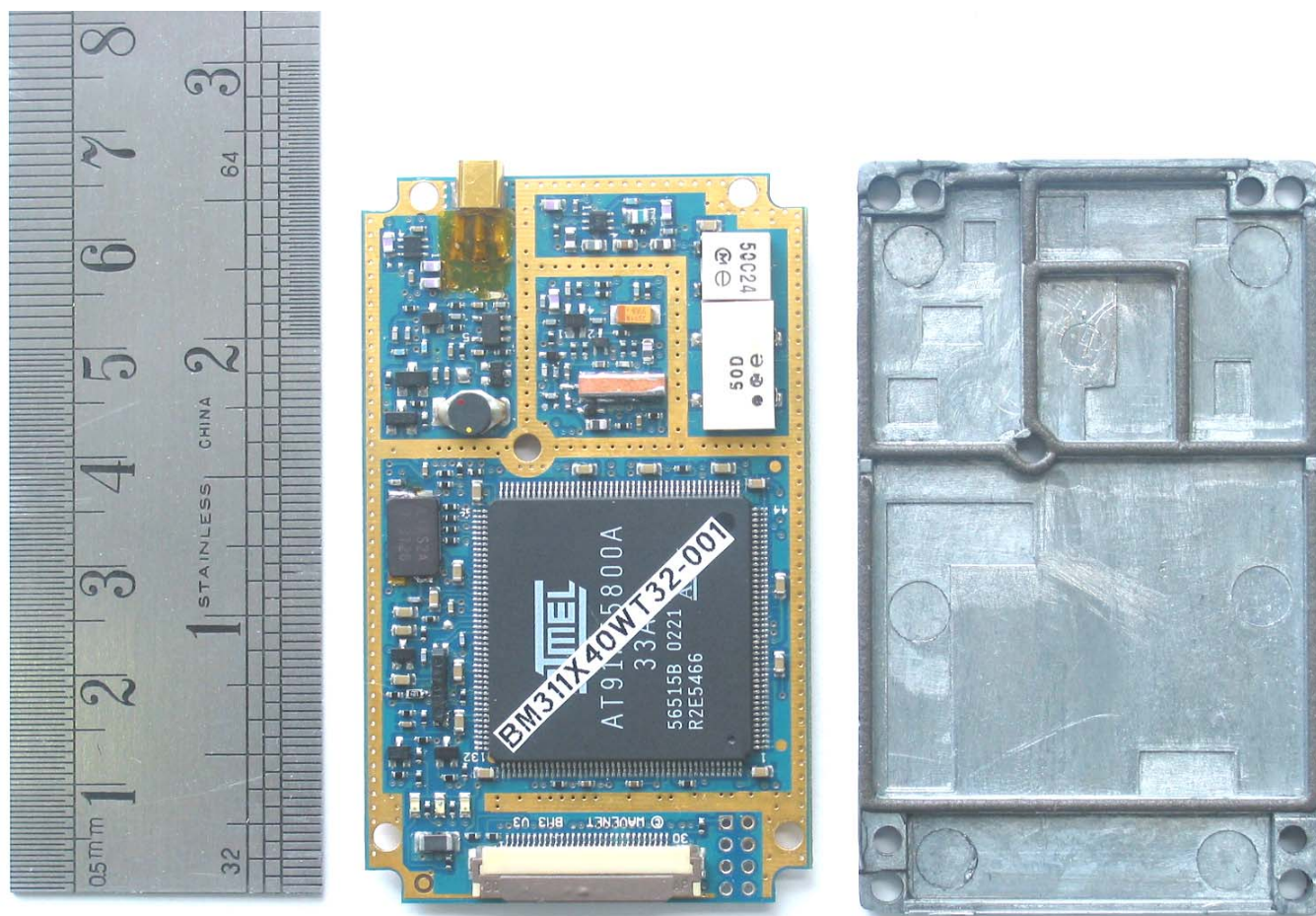
### ANNEX 3 – INTERNAL PHOTOGRAPHS



Lipman USA, Inc.  
Hand Held Point of Sale Device, Model NURIT 8000S  
FCC ID: O2SNURIT8000SWD  
IC: 4804A-N8000SWD



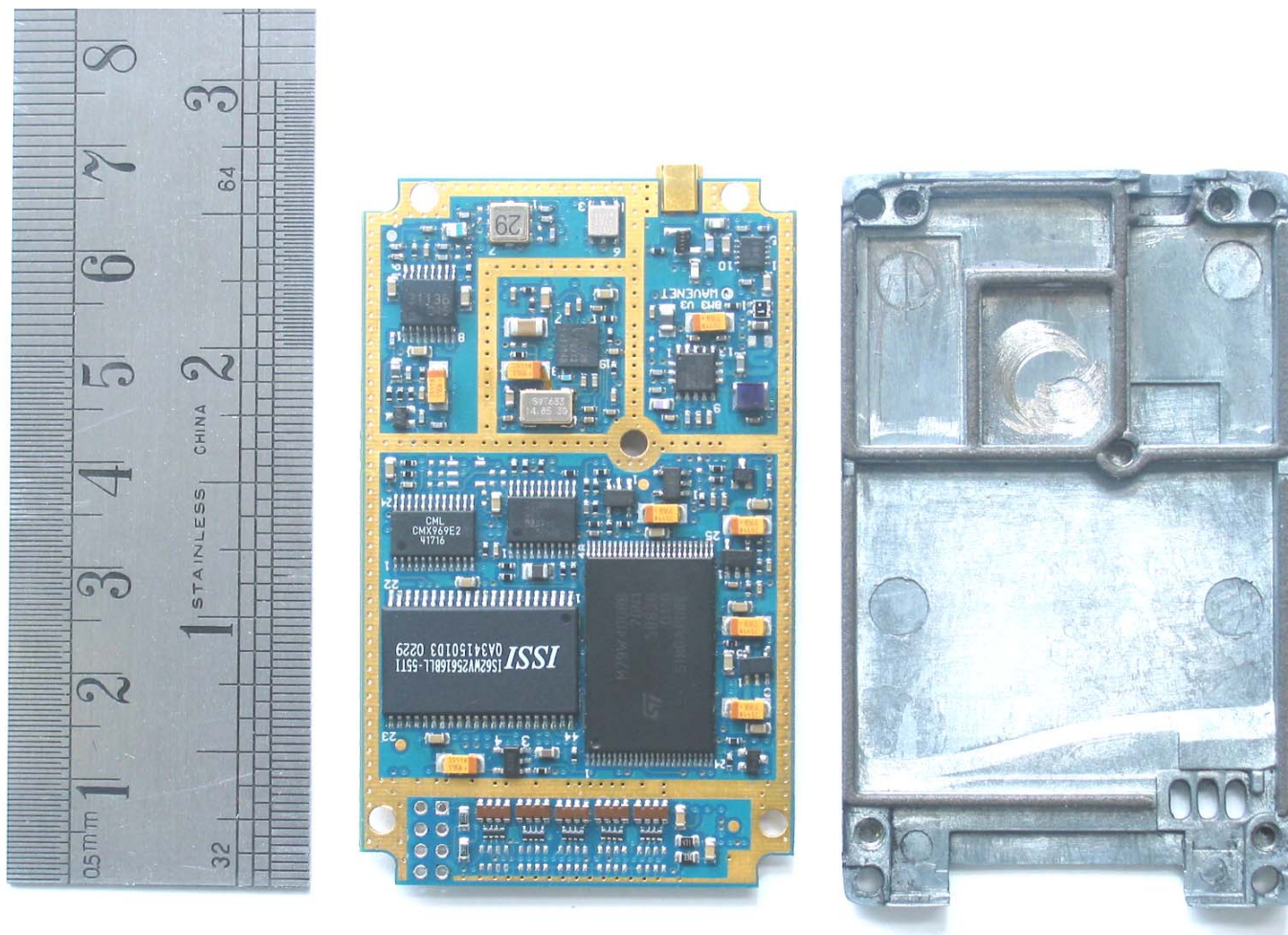
### ANNEX 3 – INTERNAL PHOTOGRAPHS



Lipman USA, Inc.  
Hand Held Point of Sale Device, Model NURIT 8000S  
FCC ID: O2SNURIT8000SWD  
IC: 4804A-N8000SWD

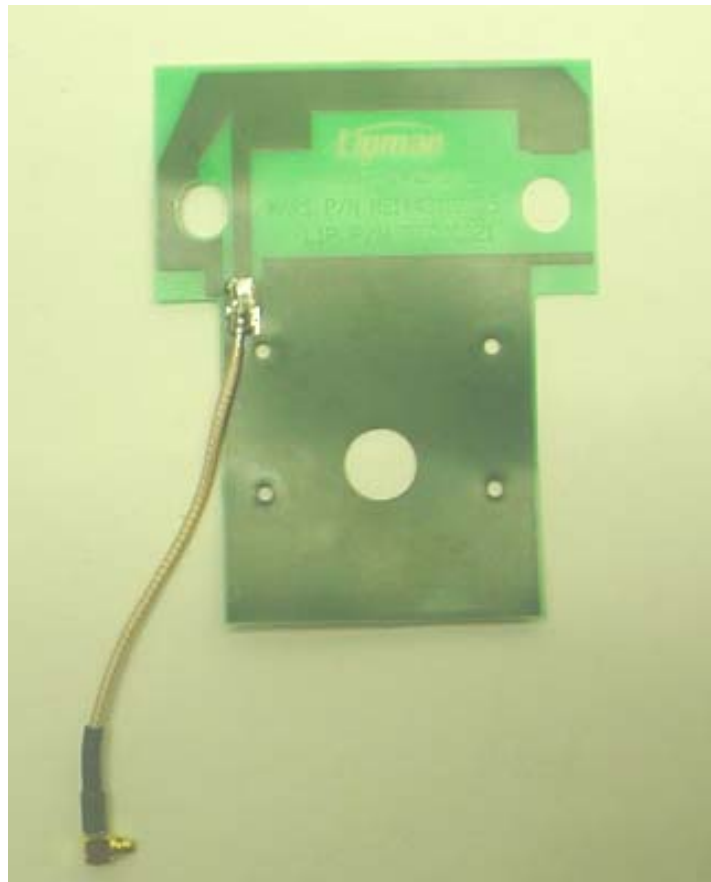


## ANNEX 3 – INTERNAL PHOTOGRAPHS



Lipman USA, Inc.  
Hand Held Point of Sale Device, Model NURIT 8000S  
FCC ID: O2SNURIT8000SWD  
IC: 4804A-N8000SWD

## ANNEX 3 – INTERNAL PHOTOGRAPHS



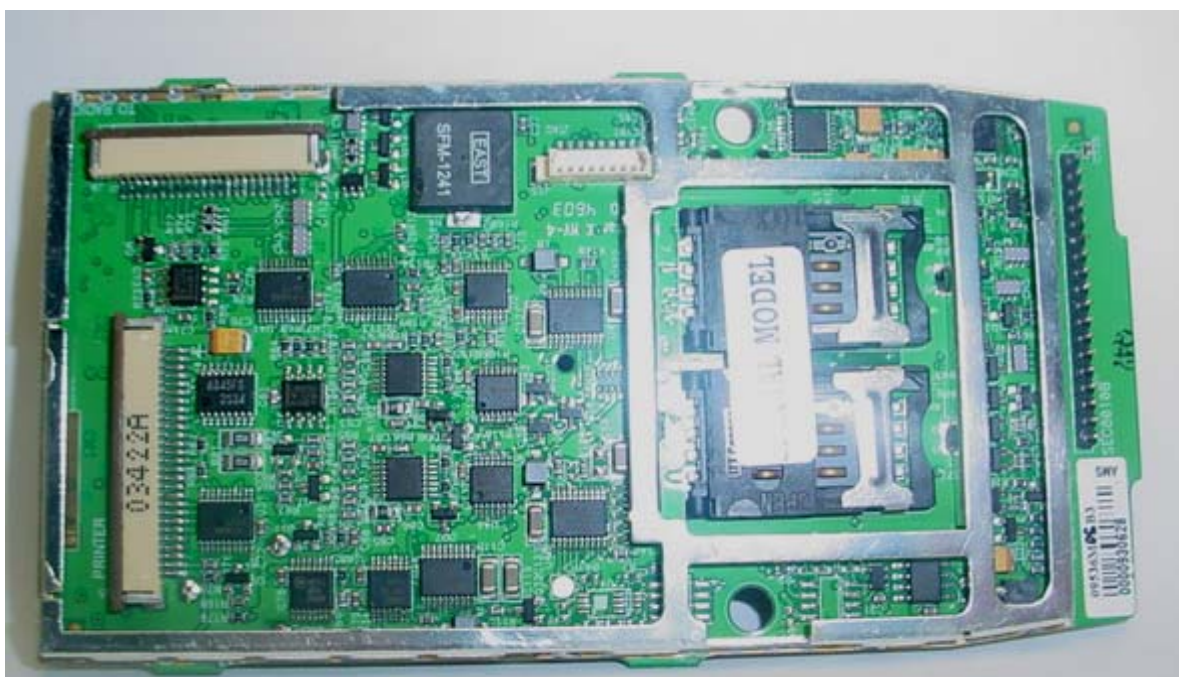
Lipman USA, Inc.  
Hand Held Point of Sale Device, Model NURIT 8000S  
FCC ID: O2SNURIT8000SWD  
IC: 4804A-N8000SWD

## ANNEX 3 – INTERNAL PHOTOGRAPHS



Lipman USA, Inc.  
Hand Held Point of Sale Device, Model NURIT 8000S  
FCC ID: O2SNURIT8000SWD  
IC: 4804A-N8000SWD

## ANNEX 3 – INTERNAL PHOTOGRAPHS



Lipman USA, Inc.  
Hand Held Point of Sale Device, Model NURIT 8000S  
FCC ID: O2SNURIT8000SWD  
IC: 4804A-N8000SWD

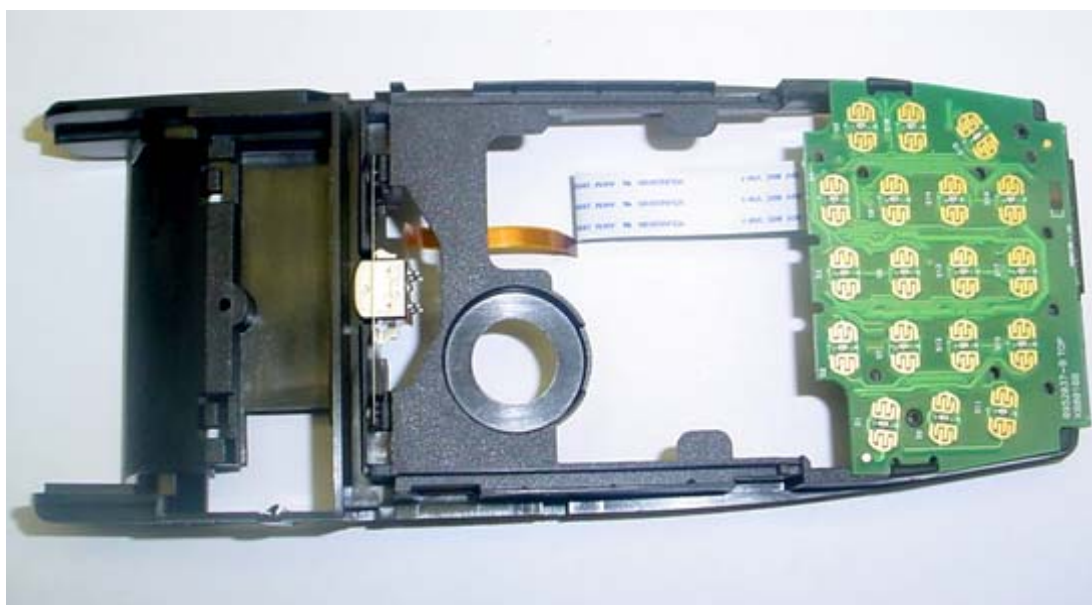


## ANNEX 3 – INTERNAL PHOTOGRAPHS



Lipman USA, Inc.  
Hand Held Point of Sale Device, Model NURIT 8000S  
FCC ID: O2SNURIT8000SWD  
IC: 4804A-N8000SWD

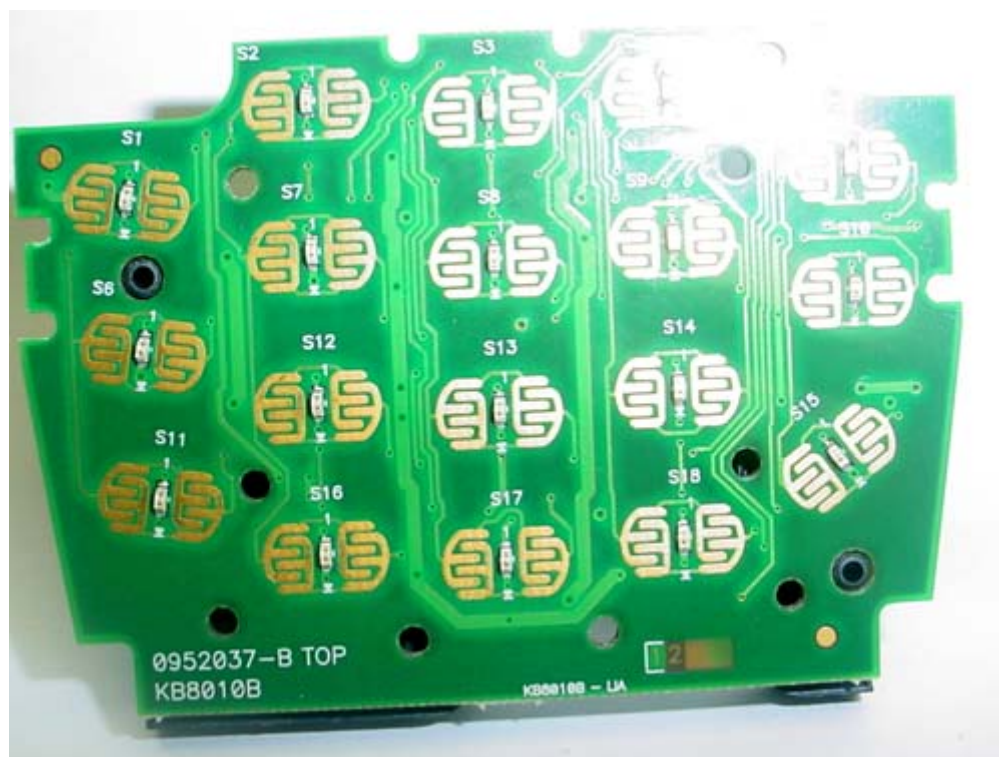
## ANNEX 3 – INTERNAL PHOTOGRAPHS



Lipman USA, Inc.  
Hand Held Point of Sale Device, Model NURIT 8000S  
FCC ID: O2SNURIT8000SWD  
IC: 4804A-N8000SWD



## ANNEX 3 – INTERNAL PHOTOGRAPHS



Lipman USA, Inc.  
Hand Held Point of Sale Device, Model NURIT 8000S  
FCC ID: O2SNURIT8000SWD  
IC: 4804A-N8000SWD

### ANNEX 3 – INTERNAL PHOTOGRAPHS



Lipman USA, Inc.  
Hand Held Point of Sale Device, Model NURIT 8000S  
FCC ID: O2SNURIT8000SWD  
IC: 4804A-N8000SWD

## ANNEX 3 – INTERNAL PHOTOGRAPHS

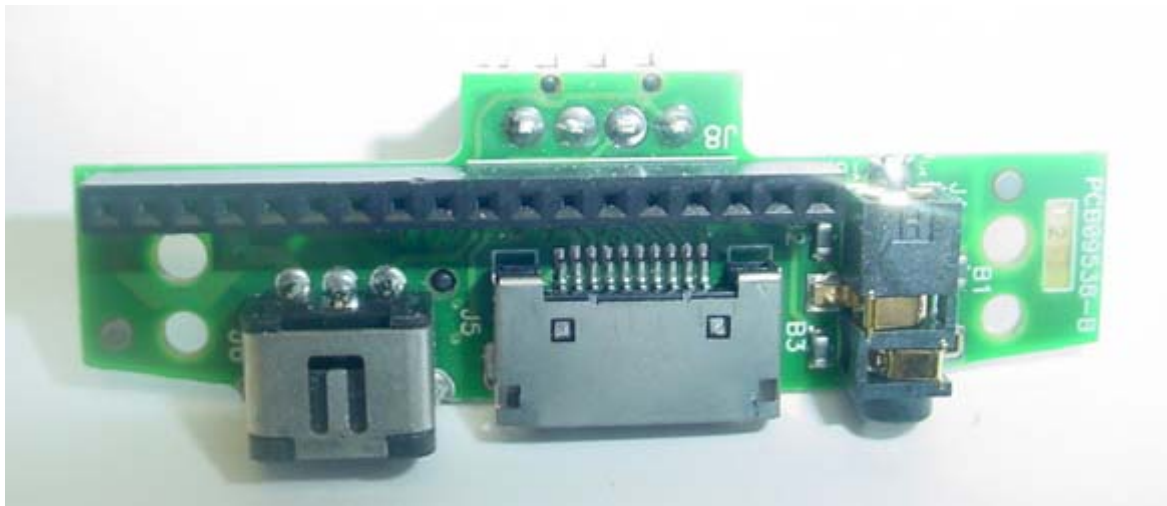


Lipman USA, Inc.  
Hand Held Point of Sale Device, Model NURIT 8000S  
FCC ID: O2SNURIT8000SWD  
IC: 4804A-N8000SWD

## ANNEX 3 – INTERNAL PHOTOGRAPHS

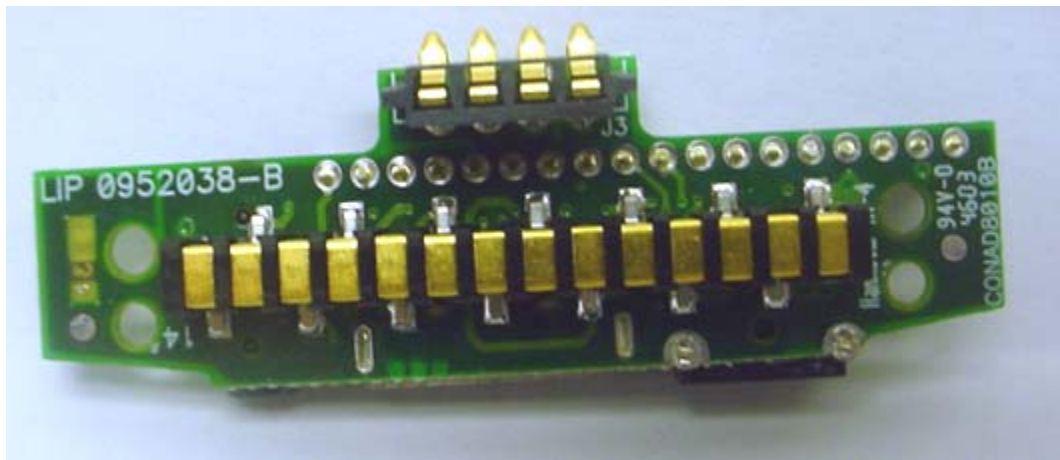


## ANNEX 3 – INTERNAL PHOTOGRAPHS



Lipman USA, Inc.  
Hand Held Point of Sale Device, Model NURIT 8000S  
FCC ID: O2SNURIT8000SWD  
IC: 4804A-N8000SWD

## ANNEX 3 – INTERNAL PHOTOGRAPHS



Lipman USA, Inc.  
Hand Held Point of Sale Device, Model NURIT 8000S  
FCC ID: O2SNURIT8000SWD  
IC: 4804A-N8000SWD