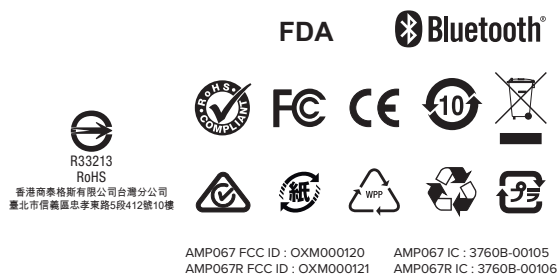


Targus®

CONTROL PLUS PRESENTER REMOTE

User Guide



Model (型號/型号) : AMP067
(Product Name / 產品名稱 / 产品名称: Wireless Presenter / 無線簡報器 / 无线简报器)
AMP067R
(Product Name / 產品名稱 / 产品名称: Wireless Receiver / 無線接收器 / 无线接收器)
SKU : AMP06704AMGL

folding line
2 staples here (saddle stitching)

EN - Introduction

Thank you for your purchase of the Targus Control Plus Presenter Remote. It offers true plug-and-play capability with no need for software drivers and the 2.4 GHz technology allows for effective presentations at up to 66/20m.

Contents

- Control Plus Presenter Remote
- USB-A Stowable Dongle
- 1 x AAA battery
- User Guide

System Requirements

Hardware

- USB-A interface

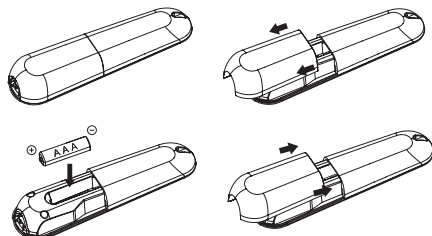
Operating System

- Windows® 10
- macOS®
- iOS®
- Android™

App/Programme functionality may vary, please check with your software provider

Installing the Battery

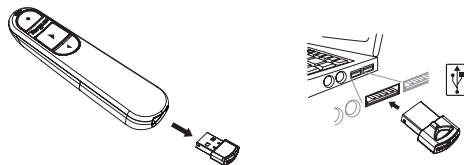
Insert the supplied battery, making sure the positive (+) and negative (-) ends of the battery match the polarity indicators inside the battery compartment. The White LED will light for 3 seconds after correct battery installation.



CAUTION : risk of explosion if the battery is replaced by an incorrect type.

Establishing connection by 2.4G mode

1. Plug the USB-A receiver into any USB-A port on your laptop.
2. The presenter will connect laptop automatically, please follow connect with the laptop if 2.4G mode is not working.
3. Depress "Laser Button and Forward Button" for 3 seconds. The White LED will flash during pairing.



Establishing connection by Bluetooth

1. Enable the Bluetooth setting on your laptop/computer device.
2. Depress "Laser Button + Backward Button" for 3 seconds. The White LED will flash for 3 mins during pairing.
3. While the White LED is flashing, go to your laptop/computer Bluetooth setting and select "Targus P067" Bluetooth device name.
4. The Bluetooth presenter is now connected to your laptop/computer and the White LED turns off.
5. If the pairing process takes longer than 3 minutes and the White LED turns off, reinstall battery and follow step 2.

Power Saving Mode

In order to conserve power and increase battery life time, the presenter will enter power saving mode automatically after 5 minutes while presenter is motionless. Click on any button to resume to normal operation, the presenter may take a few seconds to reconnect with your laptop/computer.

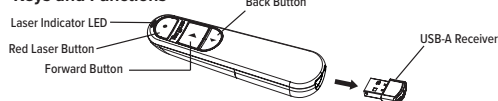
Reconnecting the laptop/computer device

The presenter will automatically attempt to reconnect to the most recent device whenever 2.4G mode or Bluetooth mode when power on or awoken.

Troubleshooting (Bluetooth connection)

- Make sure your presenter power is on.
- Make sure your laptop/computer device Bluetooth is working properly.
- Power indicator light flashing red indicates low battery.
- If your laptop/computer is connected to other Bluetooth devices, you may need to disconnect some devices before you can connect the presenter.
- If the presenter is still not connecting to your laptop/computer device and you see several "Targus P067" on Bluetooth device list, you may need to remove all "Targus P067", then hold the combo button "Laser Button + Backward Button" for 3 seconds to make a new device Bluetooth pairing connection.
- If the presenter is still not recognized, make sure the correct version of software is installed. Verify the Windows and Mac OS version for compatibility.

Keys and Functions



	Single Button / Combo Button	Operation	Function Description
1	Laser Button	Long press button	Show red laser point
2	Forward Button	1. Short press	Forward page
3		2. Long press 1 second	Play PTT
4		3. Long press 1 second again	End PTT
5	Back Button	1. Short press	Backward page
6		2. Long press 1 second	Black screen
7		3. Long press 1 second again	Resume screen
8	Laser Button + Forward Button	Long press Laser Button + Forward Button 3 seconds	2.4G wireless mode pairing or re-pairing
9	Laser Button + Backward Button	Long press Laser Button + Backward Button 3 seconds	Bluetooth wireless mode pairing or re-pairing

Targus Control Plus

Safety Measures

- Keep the presenter away from young children.
- Any attempt to disassemble, adjust or repair the presenter may result in exposure to the safety hazards.

Troubleshooting

What do I do if the response time of the presenter is slow or it intermittently stops working?

- Make sure that the presenter is within 66 feet (20 m) of its receiver.
- Increase the distance between the presenter's receiver and the base units of other wireless devices.
- Turn off any wireless devices and their base units that are near the presenter's receiver.
- Replace the battery.

Product Specification


Wireless Presenter (AMP067)

2.4G Frequency Range	2402MHz-2480MHz
Bluetooth Frequency Range	2402MHz-2480MHz
Battery Type	AAA battery
Effective 2.4G RF Communication Range	20 metres max.
Effective Bluetooth Communication Range	10 metres max.
2.4G Maximum EIRP Power (dBm) (EU)	-6.2dBm
Bluetooth Maximum EIRP Power(dBm) (EU)	-6.0dBm
Rating	1.5V \approx 100mA


Wireless Receiver (AMP067R)

2.4G Frequency Range	2402MHz-2480MHz
Interface	USB 11 / 2.0
2.4G Maximum EIRP Power (dBm) (EU)	-12.7dBm
Rating	5V \approx 100mA

Targus Control Plus



Supplier's Declaration of Conformity



Manufacturer/ Responsible Party: Targus International LLC
 Address: 1211 North Miller Street, Anaheim, CA 92806 USA
 Tel: 1-714-765-5555
 Fax: 1-714-765-5599
 Internet: www.targus.com

Hereby declares that the Product

Trade name: Targus

Product name: **Wireless Presenter, Wireless Receiver**


Model number (Reg/E): AMP067 (Wireless Presenter), AMP067R (Wireless Receiver)

Conforms to the following specifications


FCC CFR Title 47 Part 15 Subpart B and ANSI C63.4-2014 standard limits
 The test data & results are referred to the test report Number: 21011052076000

Supplementary Information:
 This device complies with part 15 of the FCC Rules. Operation is subject to the following two conditions: (1) This device may not cause harmful interference, and (2) this device must accept any interference received, including interference that may cause undesired operation.

Director, Targus International LLC: _____
 Function Title: _____
 Date: 6/1/2021 _____
 Signed for and on behalf of Targus



Declaration of Conformity



Manufacturer: Targus International LLC
 Address: 1211 North Miller Street, Anaheim, CA 92806 USA
 Importer: Targus Europe Ltd.
 Address: 5 New Square, Red Lion Business Park, Farnham, Middlesex, TW14 4HS, UK

Tel: 1-714-765-5555
 Fax: 1-714-765-5599
 Internet: www.targus.com
 Tel: +44 (0)20 8331 2013

We herewith confirm the following designated product: **Wireless Presenter, Wireless Receiver, Model No. AMP067/Wireless Presenter, AMP067R/Wireless Receiver**, brand name: "TARGUS", complies with below UK Signatures and relevant standards.


For the evaluation regarding the below legislation, the following standards were applied:

Radio Equipment Regulations 2017
 ETSI EN 301 494 V2.2.2 (2016/01)
 ETSI EN 301 494 V2.2.2 (2016/01)
 ETSI EN 300 328 V2.2.2 (2016/07)
 EN 55032:2015+A11:2020
 EN 55035:2015+A11:2020
 EN 62479:2010
 BS EN 60924:2010+A11:2021
 BS EN 62362:2010+A11:2017


The Restriction of the Use of Certain Hazardous Substances in Electrical and Electronic Equipment Regulations 2012
 EN IEC 63000:2015

This declaration of conformity is issued under the sole responsibility of the manufacturer.

Director, Targus Global Sourcing Group: _____
 Function Title: _____
 Date: 6/1/2021 _____
 Signed for and on behalf of Targus



Declaration of Conformity



Manufacturer: Targus International LLC
 Address: 1211 North Miller Street, Anaheim, CA 92806 USA
 Importer: Targus Europe Ltd.
 Address: Van Hiltstraat 18, 5145 RK Waalwijk, NETHERLANDS

Tel: 1-714-765-5555
 Fax: 1-714-765-5599
 Internet: www.targus.com
 Tel: +44 (0)20 8331 2013

We herewith confirm the following designated product: **Wireless Presenter, Wireless Receiver, Model No. AMP067/Wireless Presenter, AMP067R/Wireless Receiver**, brand name: "TARGUS", complies with EU Regulatory Requirements (Directive 2014/53/EU, EU RoHS Directive 2011/65/EU and its amendments, (Directive 2011/65/EU).

For the evaluation regarding the above Directives, the following standards were applied:

ETSI EN 301 494 V2.2.2 (2016/01)
 ETSI EN 301 494 V2.2.2 (2016/01)
 ETSI EN 300 328 V2.2.2 (2016/07)
 EN 55032:2015+A11:2020
 EN 55035:2015+A11:2020
 EN 62479:2010
 EN 60924:2010+A11:2021
 EN 62362:2010+A11:2017

EU RoHS Directive 2011/65/EU and its amendment Directive (EU) 2015/863
 EN IEC 63000:2015

Year to begin CE marking: 2021

Director, Targus Global Sourcing Group: _____
 Function Title: _____
 Date: 6/1/2021 _____
 Signed for and on behalf of Targus



AVOID EXPOSURE - HAZARDOUS ELECTROMAGNETIC RADIATION EMITTED FROM THIS APERTURE. LASER RADIATION. DO NOT STARE INTO THE BEAM OR VIEW DIRECTLY WITH OPTICAL INSTRUMENTS. CLASS 2 LASER PRODUCT.

NEVER POINT A LASER BEAM INTO A PERSON'S EYES OR VIEW A LASER BEAM DIRECTLY, AS PROLONGED EXPOSURE CAN BE HAZARDOUS TO THE EYES. MOMENTARY EXPOSURE FROM A LASER POINTER, SUCH AS AN INADVERTENT SWEEP OF THE LIGHT ACROSS A PERSON'S EYES, MAY CAUSE TEMPORARY FLASH BLINDNESS SIMILAR TO THE EFFECT OF A CAMERA FLASH BULB. ALTHOUGH THIS CONDITION IS TEMPORARY, IT CAN BECOME MORE DANGEROUS IF THE EXPOSED PERSON IS ENGAGED IN A VISION-CRITICAL ACTIVITY SUCH AS DRIVING.

CAUTION: ANY CHANGES OR MODIFICATIONS NOT EXPRESSLY APPROVED BY THE PARTY RESPONSIBLE FOR COMPLIANCE COULD VOID THE USER'S AUTHORITY TO OPERATE THE EQUIPMENT. THIS DEVICE AND ITS ANTENNA(S) MUST NOT BE CO-LOCATED OR OPERATING IN CONJUNCTION WITH ANY OTHER ANTENNA OR TRANSMITTER. YOUR DEVICE CONTAINS A LOW POWER TRANSMITTER. WHEN DEVICE IS TRANSMITTED IT SENDS OUT RADIO FREQUENCY (RF) SIGNAL. NOTE: THE MANUFACTURER IS NOT RESPONSIBLE FOR ANY RADIO OR TV INTERFERENCE CAUSED BY UNAUTHORIZED MODIFICATIONS TO THIS EQUIPMENT. SUCH MODIFICATIONS COULD VOID THE USER'S AUTHORITY TO OPERATE THE EQUIPMENT.

RF warning statement

The device has been evaluated to meet general RF exposure requirement. The device can be used in portable exposure condition without restriction.

Industry Canada Statement

This device contains licence-exempt transmitter(s) / receiver(s) that comply with Innovation, Science and Economic Development Canada's licence-exempt RSS(s). Operation is subject to the following two conditions:

1. This device may not cause interference.
2. This device must accept any interference, including interference that may cause undesired operation of the device.

L'émetteur / récepteur exempt de licence contenu dans le présent appareil est conforme aux CNR d'Innovation, Sciences et Développement économique Canada applicables aux appareils radio exempts de licence. L'exploitation est autorisée aux deux conditions suivantes:

1. L'appareil ne doit pas produire de brouillage;
2. L'appareil doit accepter tout brouillage radioélectrique subi, même si le brouillage est susceptible d'en compromettre le fonctionnement.

FCC Statement

Tested to Comply

This device complies with Part 15 of the FCC Rules. Operation is subject to the following two conditions:

1. This device may not cause harmful interference, and
2. This device must accept any interference received, including interference that may cause undesired operation.

Warning: Changes or modifications not expressly approved by the party responsible for compliance could void the user's authority to operate the equipment.

NOTE: This equipment has been tested and found to comply with the limits for a Class B digital device, pursuant to Part 15 of the FCC Rules. These limits are designed to provide reasonable protection against harmful interference in a residential installation.

This equipment generates uses and can radiate radio frequency energy and, if not installed and used in accordance with the instructions, may cause harmful interference to radio communications. However, there is no guarantee that interference will not occur in a particular installation. If this equipment does cause harmful interference to radio or television reception, which can be determined by turning the equipment off and on, the user is encouraged to try to correct the interference by one or more of the following measures:

- Reorient or relocate the receiving antenna.
- Increase the separation between the equipment and receiver.
- Connect the equipment into an outlet on a circuit different from that to which the receiver is connected.
- Consult the dealer or an experienced radio/TV technician for help.

User can find the FCC ID number inside the battery box (user-accessible non-detachable compartment)

Declaration of Conformity

Hereby, Targus, declares that this device is in compliance with the essential requirements and other relevant provisions of Directive 2014/53/EU.

AP CUSTOMERS: 3 YEARS LIMITED WARRANTY

EMEA CUSTOMERS: 2 YEARS LIMITED WARRANTY

OTHER REGIONS: 1 YEAR LIMITED WARRANTY

We pride ourselves on the quality of our products. For complete warranty details and a list of our worldwide offices, please visit www.targus.com.

Targus product warranty does not cover any device or product that is not manufactured by Targus (including, but not limited to, laptops, smartphones, devices, or any other product that may be used in connection with the Targus product). Australian customers: For complete warranty details see warranty statement enclosed.

Targus is a registered trademark of Targus International LLC in the U.S. and in certain other countries. Windows is a registered trademark or trademark of Microsoft Corporation in the United States and/or other countries. macOS is a trademark of Apple Inc., registered in the U.S. and other countries. iOS is a trademark or registered trademark of Cisco in the U.S. and other countries and used by Apple Inc. under license. Android is a trademark of Google LLC. Bluetooth is a registered trademark of Bluetooth SIG, Inc. All logos and registered trademarks are the property of their respective owners. ©2021 Targus, 1211 North Miller Street, Anaheim, CA 92806. All rights reserved.

Product Registration

Targus recommends that you register your Targus accessory shortly after purchasing it. Go to targus.com/us/product_registration. You will need to provide your full name, email address, country of residence and product information.

Technical Support

For technical questions, please visit:

US	targus.com/us/support	1.800.283.6325
CAN	Internet:targus.com/ca/support	
EMEA	targus.com/uk/support	+44 (0)20-7744-0330
Australia	targus.com/au/support	1800.641.645 (NZ 0800.633.222)
Latin America	soporte@targus.com	

AUSTRALIAN AND NEW ZEALAND CONSUMERS ONLY

Thank you for your purchase. Targus warrants to the original purchaser that its products are free from defects in materials and workmanship, during the specified warranty period, and lasts as long as the original purchaser owns the product. The warranty period is stated on the packaging or in the documentation provided with this Targus product. Targus' Limited Product Warranty excludes damage caused by accident, neglect, abuse, misuse, improper care, normal wear and tear, ownership transfer, or alteration. The limited warranty also excludes any product that is not manufactured by Targus (including, without limitation, laptops, smartphones, devices, tablets, or any other non-Targus item) that is used in connection with the Targus product.

In the event that the Targus product has a defect in materials or workmanship Targus will, after receiving a warranty claim and inspecting the product, at its discretion, do one of the following: repair, replace, or refund with the same or a similar product (or part) of no lesser quality and ship it to the original purchaser at Targus' expense. As part of this inspection, proof of purchase will be required. There is no charge for inspection. To make a warranty claim, please contact Targus Australia or New Zealand (see details below), or return the product to the place of purchase. The original purchaser must bear the cost of the delivery to Targus.

Under Australian and/or New Zealand Consumer Laws, in addition to any warranty Targus gives, our products come with guarantees that cannot be excluded. You are entitled to a replacement or refund for a major failure and compensation for any other reasonably foreseeable loss or damage. You are entitled to have the products repaired or replaced if they fail to be of acceptable quality and the failure does not amount to a major failure.

For any warranty question, contact Targus Australia Pty. Ltd. (i) by mail at Suite 2, Level 8, 5 Rider Boulevard, Rhodes NSW 2138, by phone AUS 1800 641 645 or NZ 0800 633 222 or by Email: infoaustr@targus.com. For additional information, check out our website at targus.com/au/warranty.