

FIGURE 2
DIRECT CONNECT FULL COLOR A19 (M/N: CLEDA199CD1) (HVIN: CLEDA199CD1D)
REMOVE COVER

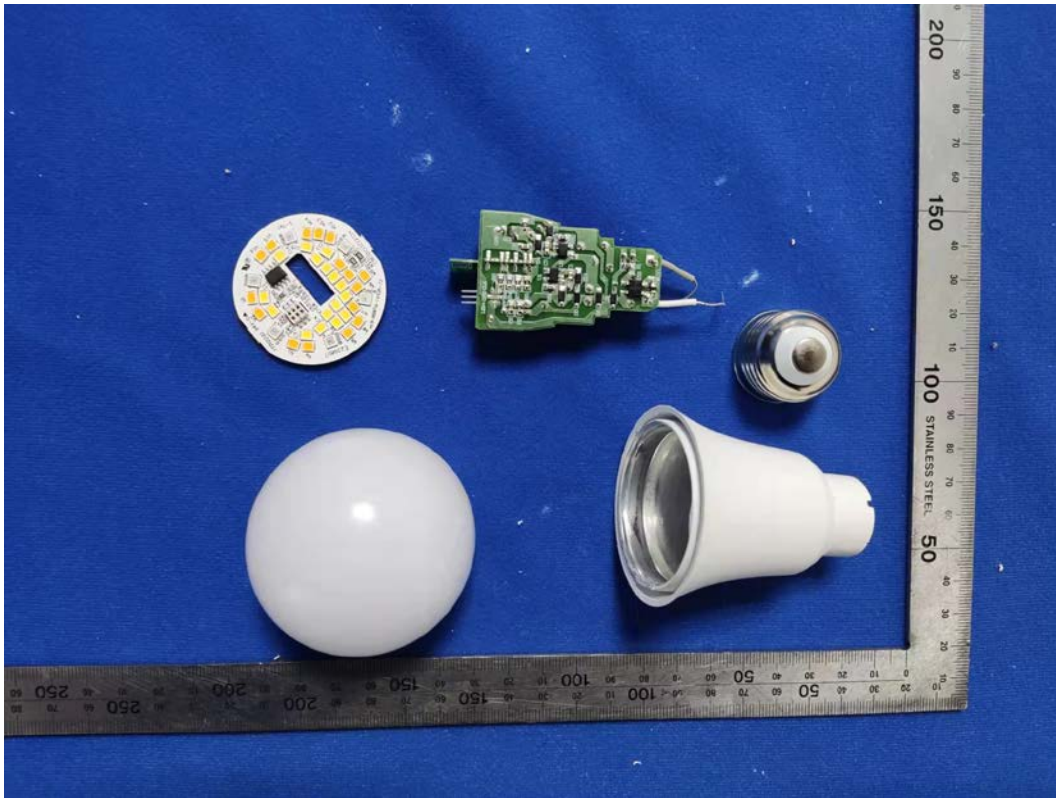


FIGURE 3
DIRECT CONNECT FULL COLOR A19 (M/N: CLEDA199CD1) (HVIN: CLEDA199CD1D)
MAIN BORAD FRONT

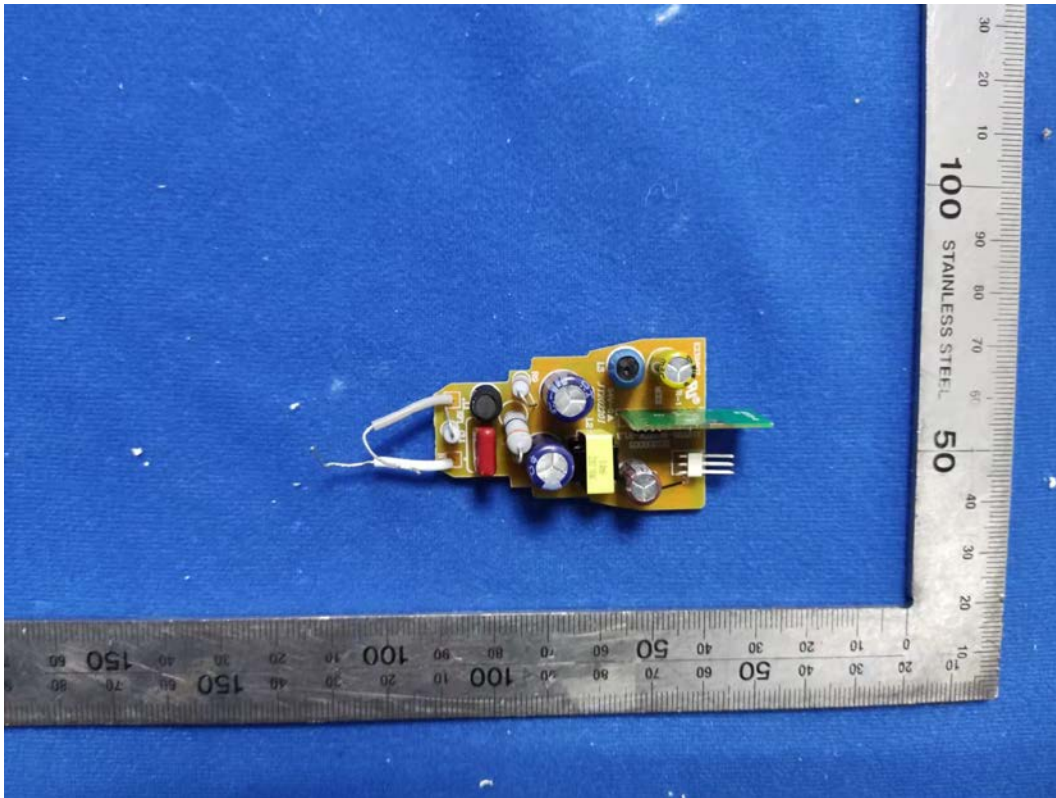


FIGURE 4
DIRECT CONNECT FULL COLOR A19 (M/N: CLEDA199CD1) (HVIN: CLEDA199CD1D)
MAIN BORAD BACK

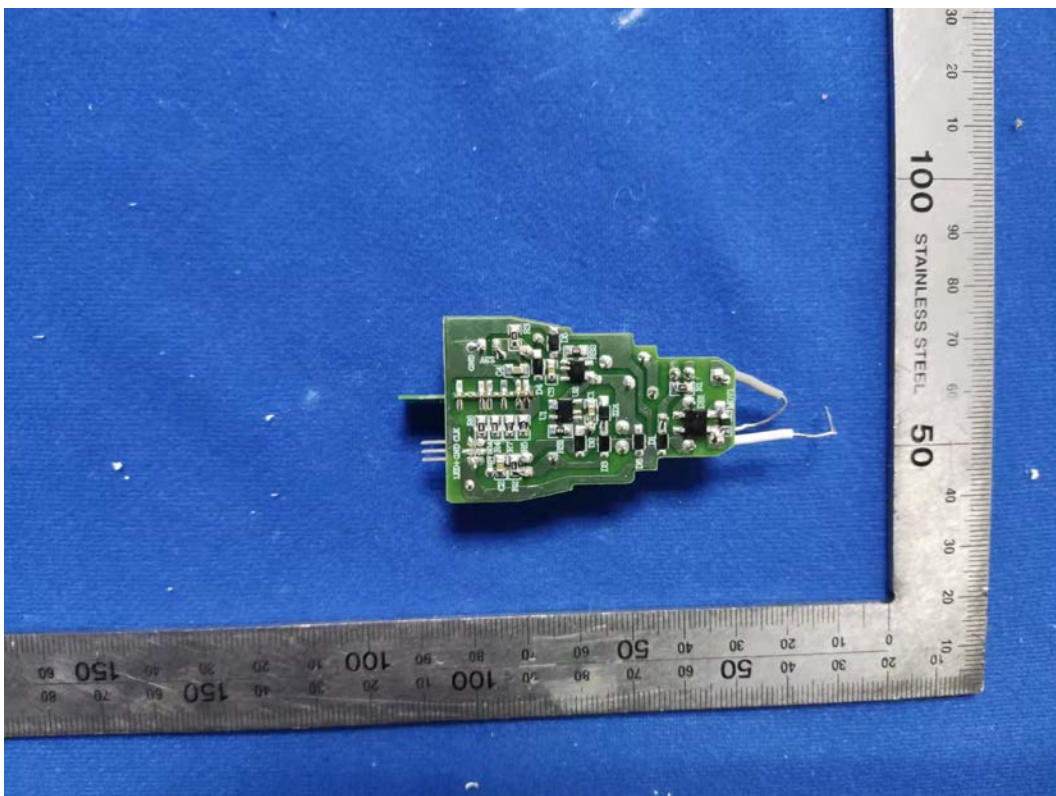


FIGURE 5
DIRECT CONNECT FULL COLOR A19 (M/N: CLEDA199CD1) (HVIN: CLEDA199CD1D)
RF BORAD FRONT

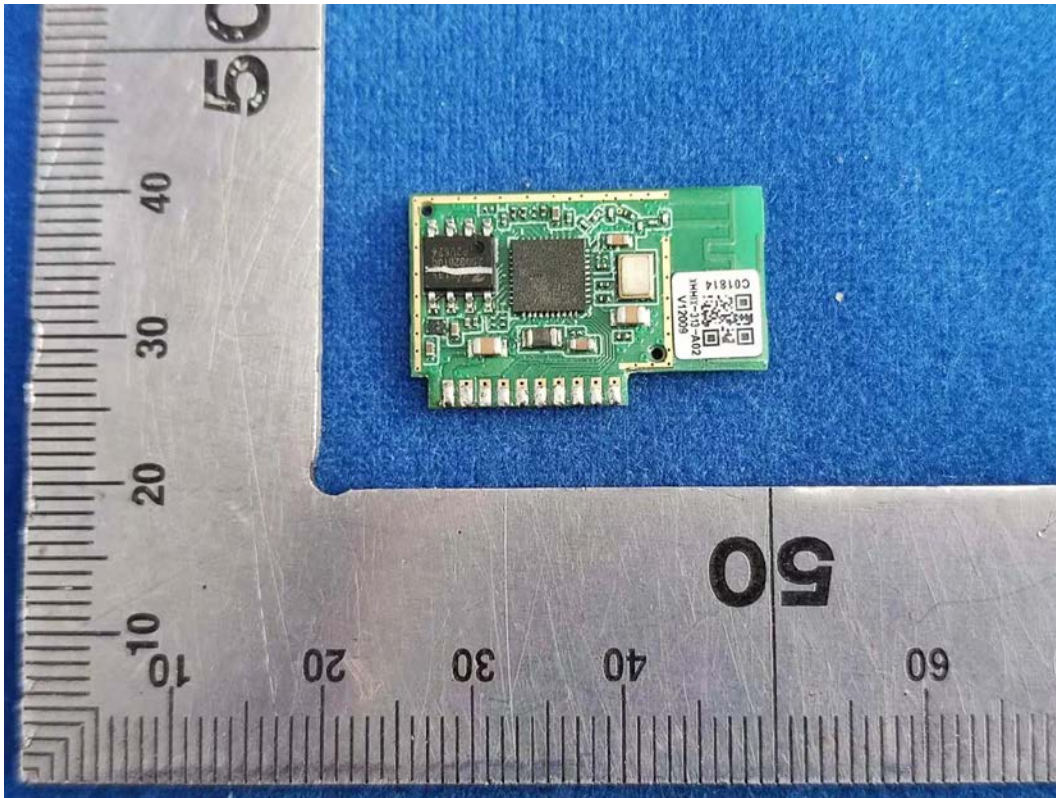


FIGURE 6
DIRECT CONNECT FULL COLOR A19 (M/N: CLEDA199CD1) (HVIN: CLEDA199CD1D)
RF BORAD BACK

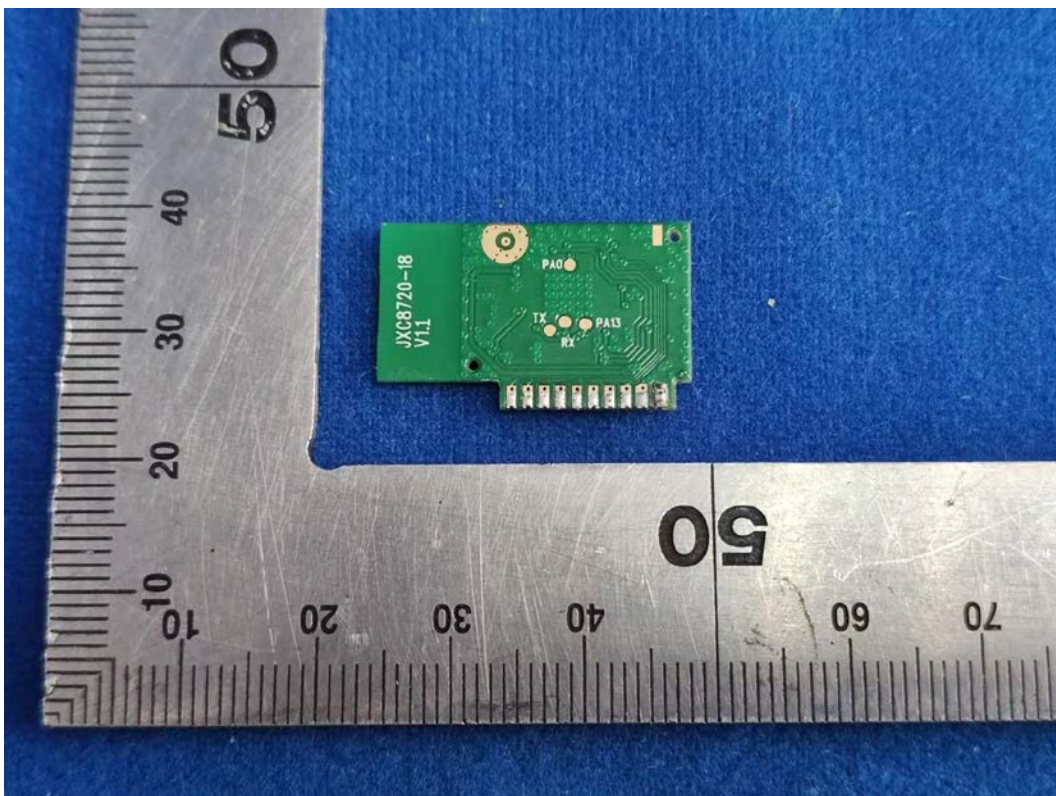


FIGURE 7
DIRECT CONNECT FULL COLOR A19 (M/N: CLEDA199CD1) (HVIN: CLEDA199CD1D)
CHIP&CRYSTAL ON RFBOARD

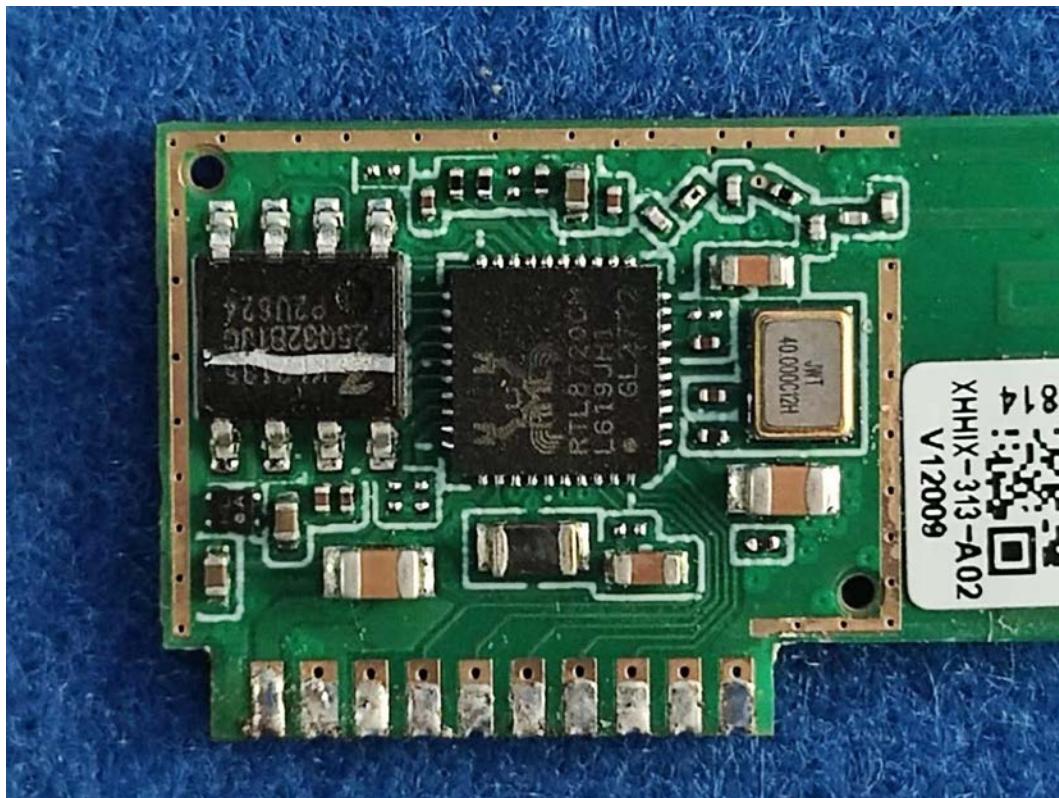


FIGURE 8
DIRECT CONNECT FULL COLOR A19 (M/N: CLEDA199CD1) (HVIN: CLEDA199CD1D)
LED FRONT



FIGURE 9
DIRECT CONNECT FULL COLOR A19 (M/N: CLEDA199CD1) (HVIN: CLEDA199CD1D)
LED BACK

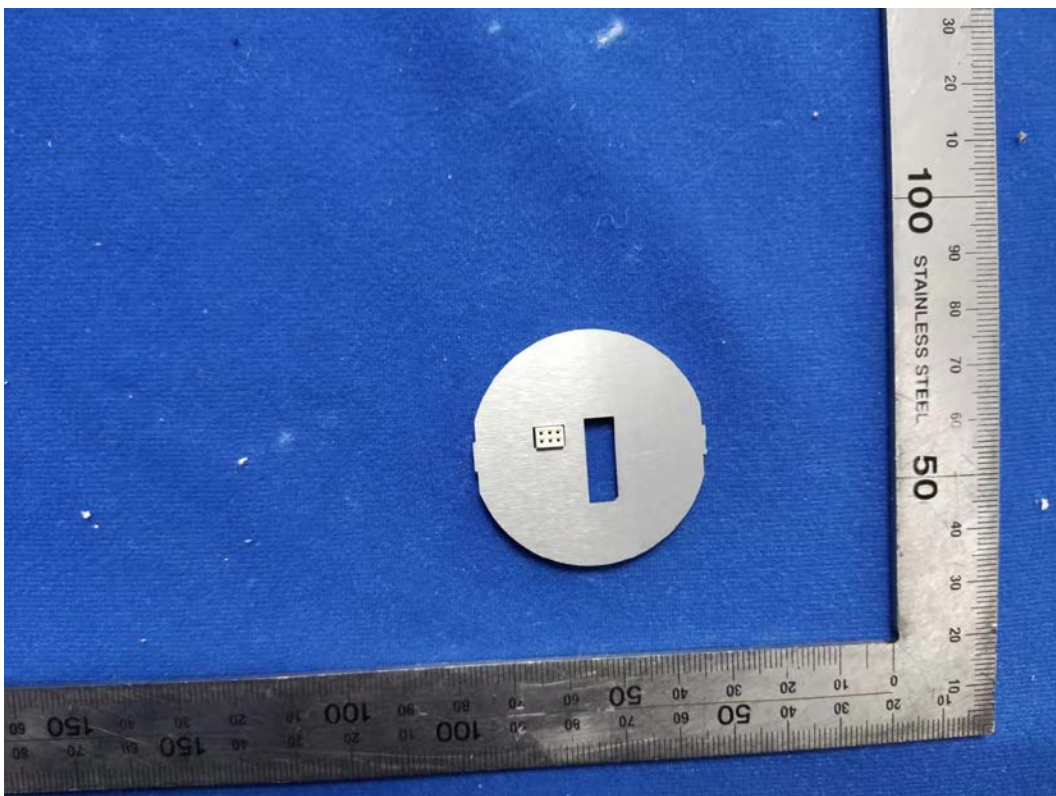


FIGURE 10
DIRECT CONNECT FULL COLOR A19 (M/N: CLEDA199CD1) (HVIN: CLEDA199CD1D)
ANTENNA

