
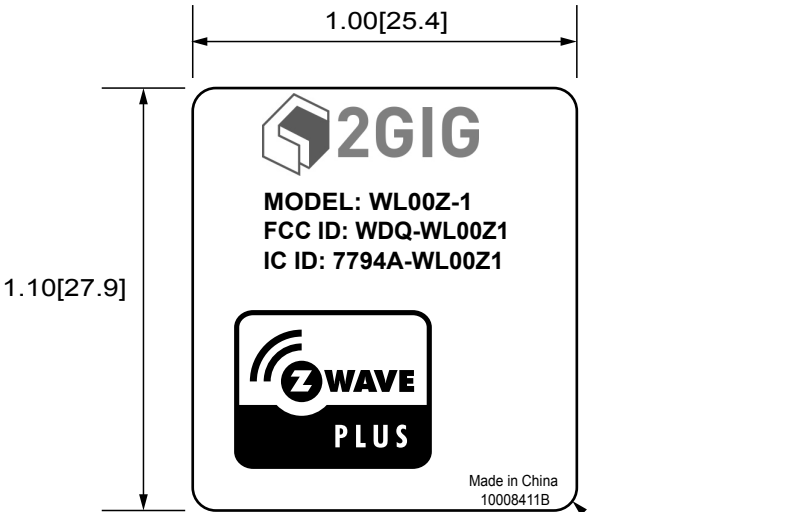
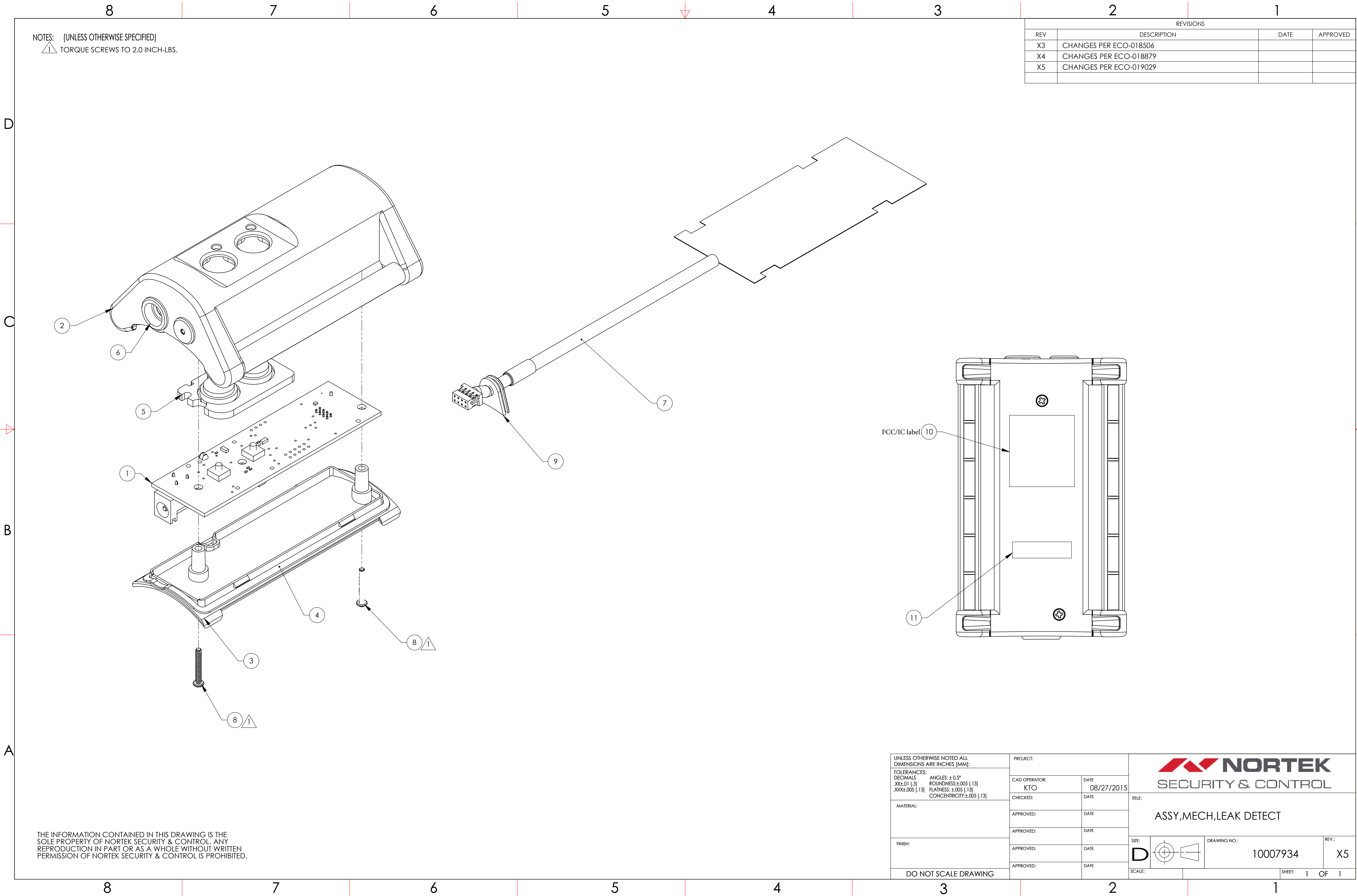



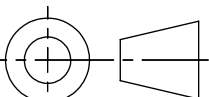
	1	2	3	4
	REVISIONS			
	REV	DESCRIPTION	DATE	APPROVED
A	A	PRODUCTION RELEASE	11/04/2015	ECO-019029
	B	REMOVED FCC LOGO	05/25/2016	ECO-019973
	NOTES: (UNLESS OTHERWISE SPECIFIED)			
	1. MATERIAL: FASSON 2MIL HIGH GLOSS WHT POLYESTER NTC/S333/BG50# WHT, UL#MH20557 OR EQUIVALENT.			
	2. USE ART WORK #10008411.EPS			
B				
			ACTUAL SIZE	
C				
D			SCALE: 2/1	
			R .06[1.5]	
E				
	UNLESS OTHERWISE SPECIFIED: DIMENSIONS ARE INCHES [mm]: SURFACE FINISH: NOTED TOLERANCES: LINEAR: .XX +/- .02 .XXX +/- .010 ANGULAR: +/- .5 DEG		CONFIDENTIAL STATEMENT: THIS DOCUMENT CONTAINS INFORMATION CONFIDENTIAL TO 2GIG TECHNOLOGIES AND MAY NOT BE COPIED IN WHOLE OR PART WITHOUT AUTHORIZATION OF 2GIG TECHNOLOGIES, INC.	
	DRAWN D. ROBINSON		DATE 10/04/15	
	APPROVED		DATE	
F			TITLE: LABEL, FCC, ID, WL00Z-1	
			DWG NO. 10008411	
			B	
			DO NOT SCALE DRAWING	
			SHEET 1 OF 1	



NOTES: (UNLESS OTHERWISE SPECIFIED)
TORQUE SCREWS TO 2.0 INCH-LBS.

REVISIONS			
REV	DESCRIPTION	DATE	APPROVED
X3	CHANGES PER ECO-018506		
X4	CHANGES PER ECO-018879		
X5	CHANGES PER ECO-019029		

THE INFORMATION CONTAINED IN THIS DRAWING IS THE
SOLE PROPERTY OF NORTEK SECURITY & CONTROL. ANY
REPRODUCTION IN PART OR AS A WHOLE WITHOUT WRITTEN
PERMISSION OF NORTEK SECURITY & CONTROL IS PROHIBITED.

UNLESS OTHERWISE NOTED ALL DIMENSIONS ARE INCHES [MM]:		PROJECT:				
TOLERANCES: DECIMALS ANGLES: ± 0.5° .XX±.01 [.3] ROUNDNESS:±.005 [.13] .XXX±.005 [.13] FLATNESS: ±.005 [.13] CONCENTRICITY:±.005 [.13]		CAD OPERATOR:	DATE			
		KTO	08/27/2015			
MATERIAL:		CHECKED:	DATE	TITLE: ASSY,MECH,LEAK DETECT		
		APPROVED:	DATE			
		APPROVED:	DATE			
FINISH:		APPROVED:	DATE	SIZE:  DRAWING NO.: 10007934REV.: X5		
		APPROVED:	DATE			
		APPROVED:	DATE			
DO NOT SCALE DRAWING				SCALE:		SHEET: 1 OF 1

ASSY, MECH, LEAK DETECT

10007934

X5

