

MERKURY
INNOVATIONS

MERKURY INNOVATIONS **CONFIDENTIAL**

FILE INFORMATION

DATE: 03/10/22

MODEL NUMBER:

MI-S096B-199 (MANUAL)

PRINTER SPECIFICATIONS

FILE NAME: MI-S096B-199_Manual_REV_031022.ai

SCALE: 100%

SIZE: Trim: Manual:W 400mm x H 140mm

PAPER STOCK: 80g Art Paper

Finish: Matt Lamination

INKS: 1/1

Greyscale

PRESS WORK / NOTES: Trim to size, score, fold,
& glue in specified areas.

Trim
Score

DO NOT print Comments or Dielines.

Physical sample according to specs must be approved
by MERKURY before proceeding to production.

CONTACT

MERKURY CHINA:

Perry

perry@merkuryinnovations.com.cn

COMMENTS (Internal reference only)

File created by Kim

- Please include in all packaging for MI-S096B-199

- Greyscale

- Matt Lamination

- Single sided printing

- Fold NEATLY

- Revised front page

FRONT

MERKURY
INNOVATIONS



* **IMPORTANT** Please read before using this product

MOONSTRUCK

BLUETOOTH SPEAKER

User Manual for MI-S096B-199

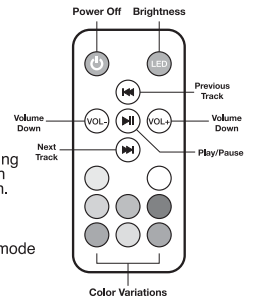
Included: MoonStruck Bluetooth Speaker, USB Power Cable, Remote Control

If you have any questions or problems email: support@merkuryinnovations.com

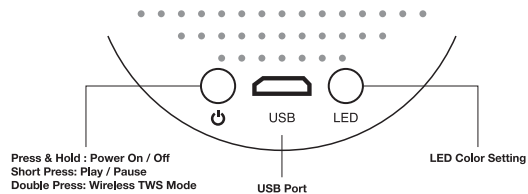
USING YOUR MoonStruck

- Press the Power Button located at the bottom of the MoonStruck Speaker to turn the product on.
- Remove the battery protection tab from the back of the remote.
- Use the remote control to change brightness, LED colors and flashing modes.

- Press and hold the LED button on product for light flashing mode in selected color, press again for light-reactive with music mode and press again to turn off flashing function.
- Press the LED button to adjust brightness from high to middle to low, then off.
- Press and hold the yellow color button for light flashing mode with automatic color change.
- Press and hold the white color button for pulsing color change every 3 seconds.
- Use the color buttons on the remote to select any desired color.

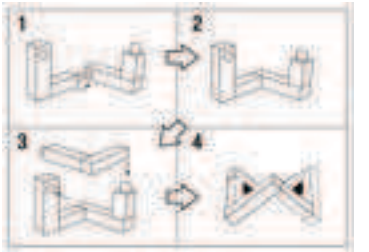


PRODUCT BOTTOM



ASSEMBLING YOUR MOONSTRUCK SPEAKER STAND

- Assemble the wooden frame by inserting each dowel into its corresponding slot. Refer to image.
- The MoonStruck Speaker can be powered by connecting to a USB power source using the included USB power cable or via the included rechargeable lithium battery.



PAIR & CONNECT WITH A NEW DEVICE

- Make sure the speaker is turned off and your device's Bluetooth setting is activated.
- Turn the speaker on; after a few seconds it will automatically enter into pairing mode and the LED will flash.
- On your Bluetooth-enabled device, navigate to the Bluetooth settings menu, turn on the Bluetooth feature and search for new devices. Wait a few seconds and select "MI-S096B". The speaker will emit a tone when successfully paired.

NOTE: MoonStruck Bluetooth Speaker will always auto-pair with your device as long as it is in range and your device's Bluetooth is enabled.

WIRELESS TWS FEATURE:

- Power-on both speakers.
- Hold power button on the bottom of the bluetooth connected speaker until beep indicates connection.
- Connected speaker will pair automatically with the second MoonStruck speaker when using TWS feature of these speakers.
- Blue light indicates Bluetooth connection and red light indicates charging mode.

CHARGING INFORMATION:

- Unit features a built-in charge protection circuit. It can be charged by connecting to a computer or power source. Full charge takes approximately 4 hours.
- Battery-life and each charge time depends on volume and usage.

FEATURES

Bluetooth function
Memory function and playback
Built-in lithium battery
High-quality sound

IN THE BOX:

MoonStruck Bluetooth Speaker
Manual
USB Power Cable

SPECIFICATIONS:

Bluetooth Standard: 5.0
Transmission distance: 10 meters
Output power: 5w
Frequency effect: 70Hz-18KHz
Input Power: Direct-current DC5V500-1500mA
Maximum current consumption:400mA

TROUBLESHOOTING

No power	First, recharge your speaker using the included charging cable. Then, try using a different micro USB cable.
Music is not playing over Bluetooth	Make sure your Bluetooth device has A2DP profile. Check if both devices are paired and connected over Bluetooth. Restart the speaker to reconnect your Bluetooth device.
Bluetooth device will not reconnect with the speaker	Navigate to your Bluetooth settings menu on your Bluetooth device, tap "MI-S096B," and select "Forget." Now follow the steps to pair your device again.

TECHNICAL SUPPORT:

Please do not attempt to fix the product by yourself. If you are experiencing any problems with the product please do not return it to the store you bought it from. You can contact our technical support representatives and they will assist you with any questions you might have.

For assistance operating your product please consult the User's Manual first then feel free to contact Merkury Innovations technical support:

Merkury Innovations
45 Broadway, 3rd Floor New York, New York 10006
www.merkuryinnovations.com
E-mail: support@merkuryinnovations.com

© 2022 Merkury Innovations LLC

To explore our full selection of products, visit us at: www.merkuryinnovations.com
The illustrated product and specifications may differ slightly from those supplied.
All other trademarks and trade names are those of their respective owners.
Made in China

FCC Warning Statement

Changes or modifications not expressly approved by the party responsible for compliance could void the user's authority to operate the equipment. This equipment has been tested and found to comply with the limits for a Class B digital device, pursuant to Part 15 of the FCC Rules. These limits are designed to provide reasonable protection against harmful interference in a residential installation. This equipment generates uses and can radiate radio frequency energy and, if not installed and used in accordance with the instructions, may cause harmful interference to radio communications. However, there is no guarantee that interference will not occur in a particular installation. If this equipment does cause harmful interference to radio or television reception, which can be determined by turning the equipment off and on, the user is encouraged to try to correct the interference by one or more of the following measures:

- - Reorient or relocate the receiving antenna.
- - Increase the separation between the equipment and receiver.
- - Connect the equipment into an outlet on a circuit different from that to which the receiver is connected.
- - Consult the dealer or an experienced radio/TV technician for help.

This device complies with part 15 of the FCC Rules. Operation is subject to the following two conditions: (1) This device may not cause harmful interference, and (2) this device must accept any interference received, including interference that may cause undesired operation.

The device has been evaluated to meet general RF exposure requirement.