

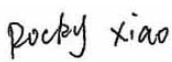
## SAR EVALUATION REPORT

For

**DT Research, Inc.**

3RD FL NO 36 WUQUAN 7TH RD WUGU DISTRICT, NEW TAIPEI, Taiwan

**FCC ID: YE3600D**

<b>Report Type:</b> CIIPC Report	<b>Product Type:</b> WLAN module
<b>Report Number:</b> RDG191128001-20A1	
<b>Report Date:</b> 2019-12-18	
<b>Reviewed By:</b>	Rocky Xiao RF Engineer 
<b>Prepared By:</b>	Bay Area Compliance Laboratories Corp. (Dongguan) No.69 Pulongcun, Puxinhu Industry Area, Tangxia, Dongguan, Guangdong, China Tel: +86-769-86858888 Fax: +86-769-86858891 <a href="http://www.baclcorp.com.cn">www.baclcorp.com.cn</a>

**Note:** This test report is prepared for the customer shown above and for the device described herein. It may not be duplicated or used in part without prior written consent from Bay Area Compliance Laboratories Corp. (Dongguan).

This report must not be used by the customer to claim product certification, approval, or endorsement by A2LA\* or any agency of the Federal Government. \* This report may contain data that are not covered by the A2LA accreditation and are marked with an asterisk “\*”

Attestation of Test Results			
EUT Information	EUT Description	WLAN module	
	Tested Model	600D	
	FCC ID	YE3600D	
	Serial Number	RDG191128001-SA-S1	
	Test Date	2019-11-28	
MODE		Max. SAR Level(s) Reported(W/kg)	Limit
WLAN 5.2G	1g Body SAR	0.78	1.6
WLAN 5.3G	1g Body SAR	0.61	
WLAN 5.6G	1g Body SAR	0.67	
WLAN 5.8G	1g Body SAR	1.19	
WLAN 2.4G	1g Body SAR	1.18	
Bluetooth	1g Body SAR	0.09	
Simultaneous	1g Body SAR	0.30	
Applicable Standards	FCC 47 CFR part 2.1093 Radiofrequency radiation exposure evaluation: portable devices		
	RF Exposure Procedures: TCB Workshop April 2019		
	IEEE1528:2013 IEEE Recommended Practice for Determining the Peak Spatial-Average Specific Absorption Rate (SAR) in the Human Head from Wireless Communications Devices: Measurement Techniques		
	IEC 62209-2:2010 Human exposure to radio frequency fields from hand-held and body-mounted wireless communication devices-Human models, instrumentation, and procedures-Part 2: Procedure to determine the specific absorption rate (SAR) for wireless communication devices used in close proximity to the human body (frequency range of 30 MHz to 6 GHz)		
	KDB procedures KDB 447498 D01 General RF Exposure Guidance v06 KDB 616217 D04 SAR for laptop and tablets v01r02 KDB 865664 D01 SAR Measurement 100 MHz to 6 GHz v01r04 KDB 865664 D02 RF Exposure Reporting v01r02 KDB 248227 D01 802 11 Wi-Fi SAR v02r02		
<b>Note:</b> This wireless device has been shown to be capable of compliance for localized specific absorption rate (SAR) for General Population/Uncontrolled Exposure limits specified in <b>FCC 47 CFR part 2.1093</b> and has been tested in accordance with the measurement procedures specified in IEEE 1528-2013 and RF exposure KDB procedures. <b>The results and statements contained in this report pertain only to the device(s) evaluated.</b>			

## **TABLE OF CONTENTS**

<b>DOCUMENT REVISION HISTORY .....</b>	<b>4</b>
<b>EUT DESCRIPTION .....</b>	<b>5</b>
TECHNICAL SPECIFICATION .....	5
<b>REFERENCE, STANDARDS, AND GUIDELINES.....</b>	<b>6</b>
SAR LIMITS .....	7
<b>FACILITIES.....</b>	<b>8</b>
<b>DESCRIPTION OF TEST SYSTEM .....</b>	<b>9</b>
<b>EQUIPMENT LIST AND CALIBRATION .....</b>	<b>15</b>
EQUIPMENTS LIST & CALIBRATION INFORMATION .....	15
<b>SAR MEASUREMENT SYSTEM VERIFICATION .....</b>	<b>16</b>
LIQUID VERIFICATION .....	16
SYSTEM ACCURACY VERIFICATION.....	18
SAR SYSTEM VALIDATION DATA .....	19
<b>EUT TEST STRATEGY AND METHODOLOGY .....</b>	<b>24</b>
TEST POSITIONS FOR DEVICE OPERATING NEXT TO A PERSON’S EAR.....	24
CHEEK/TOUCH POSITION .....	25
EAR/TILT POSITION .....	25
TEST POSITIONS FOR BODY-WORN AND OTHER CONFIGURATIONS.....	26
TEST DISTANCE FOR SAR EVALUATION.....	26
SAR EVALUATION PROCEDURE.....	27
<b>CONDUCTED OUTPUT POWER MEASUREMENT .....</b>	<b>28</b>
PROVISION APPLICABLE .....	28
TEST PROCEDURE .....	28
MAXIMUM TARGET OUTPUT POWER .....	28
TEST RESULTS: .....	30
<b>STANDALONE SAR TEST EXCLUSION CONSIDERATIONS .....</b>	<b>35</b>
ANTENNAS LOCATION: .....	35
ANTENNA DISTANCE TO EDGE .....	35
STANDALONE SAR TEST EXCLUSION CONSIDERATIONS DETAILS:.....	35
SAR TEST EXCLUSION FOR THE EUT EDGE CONSIDERATIONS RESULT .....	36
<b>SAR MEASUREMENT RESULTS.....</b>	<b>37</b>
SAR TEST DATA.....	37
<b>SAR MEASUREMENT VARIABILITY .....</b>	<b>43</b>
<b>SAR SIMULTANEOUS TRANSMISSION DESCRIPTION .....</b>	<b>44</b>
<b>SAR PLOTS.....</b>	<b>46</b>
<b>APPENDIX A MEASUREMENT UNCERTAINTY .....</b>	<b>47</b>
<b>APPENDIX B EUT TEST POSITION PHOTOS .....</b>	<b>49</b>
<b>APPENDIX C CALIBRATION CERTIFICATES .....</b>	<b>50</b>

---

**DOCUMENT REVISION HISTORY**

---

Revision Number	Report Number	Description of Revision	Date of Revision
1.0	RDG191128001-20A1	CIIPC Report	2019-12-18

## EUT DESCRIPTION

This report has been prepared on behalf of **DT Research, Inc.** and their product **WLAN module**, Model: **600D**, FCC ID: **YE3600D**. The WLAN module mounted in a piece of **Mobile Tablet**, Model: **DT301Y**

*\*All measurement and test data in this report was gathered from production sample serial number: RDG191128001-SA-S1(Assigned by BACL, Dongguan).The EUT supplied by the applicant was received on 2019-11-27.*

## Technical Specification

<b>Device Type:</b>	Portable
<b>Exposure Category:</b>	Population / Uncontrolled
<b>Antenna Type(s):</b>	Internal Antenna
<b>Body-Worn Accessories:</b>	None
<b>Operation Mode :</b>	WLAN, Bluetooth
<b>Frequency Band:</b>	WLAN 2.4G: 2412 -2472 MHz WLAN 5G: 5150 -5250 MHz/5250 -5350 MHz/5470-5725MHz/ 5725-5850MHz Bluetooth : 2402 MHz-2480 MHz
<b>Conducted RF Power:</b>	WLAN 2.4G: 20.23 dBm WLAN 5G: 13.46 dBm Bluetooth(BDR/EDR): 11.95 dBm BLE: 8.92 dBm
<b>Power Source:</b>	11.4 VDC From Rechargeable Battery
<b>Normal Operation:</b>	Body Supported

---

## REFERENCE, STANDARDS, AND GUIDELINES

---

### **FCC:**

The Report and Order requires routine SAR evaluation prior to equipment authorization of portable transmitter devices, including portable telephones. For consumer products, the applicable limit is 1.6 mW/g as recommended by the ANSI/IEEE standard C95.1-1992 [6] for an uncontrolled environment (Paragraph 65). According to the Supplement C of OET Bulletin 65 "Evaluating Compliance with FCC Guide-lines for Human Exposure to Radio frequency Electromagnetic Fields", released on Jun 29, 2001 by the FCC, the device should be evaluated at maximum output power (radiated from the antenna) under "worst-case" conditions for normal or intended use, incorporating normal antenna operating positions, device peak performance frequencies and positions for maximum RF energy coupling.

This report describes the methodology and results of experiments performed on wireless data terminal. The objective was to determine if there is RF radiation and if radiation is found, what is the extent of radiation with respect to safety limits. SAR (Specific Absorption Rate) is the measure of RF exposure determined by the amount of RF energy absorbed by human body (or its parts) – to determine how the RF energy couples to the body or head which is a primary health concern for body worn devices. The limit below which the exposure to RF is considered safe by regulatory bodies in North America is 1.6 mW/g average over 1 gram of tissue mass.

### **CE:**

The order requires routine SAR evaluation prior to equipment authorization of portable transmitter devices, including portable telephones. For consumer products, the applicable limit is 2 mW/g as recommended by EN62209-1 for an uncontrolled environment. According to the Standard, the device should be evaluated at maximum output power (radiated from the antenna) under "worst-case" conditions for normal or intended use, incorporating normal antenna operating positions, device peak performance frequencies and positions for maximum RF energy coupling.

This report describes the methodology and results of experiments performed on wireless data terminal. The objective was to determine if there is RF radiation and if radiation is found, what is the extent of radiation with respect to safety limits. SAR (Specific Absorption Rate) is the measure of RF exposure determined by the amount of RF energy absorbed by human body (or its parts) – to determine how the RF energy couples to the body or head which is a primary health concern for body worn devices. The limit below which the exposure to RF is considered safe by regulatory bodies in Europe is 2 mW/g average over 10 gram of tissue mass.

The test configurations were laid out on a specially designed test fixture to ensure the reproducibility of measurements. Each configuration was scanned for SAR. Analysis of each scan was carried out to characterize the above effects in the device.

**SAR Limits****FCC Limit**

EXPOSURE LIMITS	SAR (W/kg)	
	(General Population / Uncontrolled Exposure Environment)	(Occupational / Controlled Exposure Environment)
Spatial Average (averaged over the whole body)	0.08	0.4
Spatial Peak (averaged over any 1 g of tissue)	<b>1.60</b>	8.0
Spatial Peak (hands/wrists/feet/ankles averaged over 10 g)	4.0	20.0

**CE Limit**

EXPOSURE LIMITS	SAR (W/kg)	
	(General Population / Uncontrolled Exposure Environment)	(Occupational / Controlled Exposure Environment)
Spatial Average (averaged over the whole body)	0.08	0.4
Spatial Peak (averaged over any 10 g of tissue)	2.0	10
Spatial Peak (hands/wrists/feet/ankles averaged over 10 g)	4.0	20.0

Population/Uncontrolled Environments are defined as locations where there is the exposure of individual who have no knowledge or control of their exposure.

Occupational/Controlled Environments are defined as locations where there is exposure that may be incurred by people who are aware of the potential for exposure (i.e. as a result of employment or occupation).

General Population/Uncontrolled environments Spatial Peak limit 1.6W/kg for 1g Body SAR applied to the EUT.

## FACILITIES

---

The Test site used by Bay Area Compliance Laboratories Corp. (Dongguan) to collect test data is located on the No.69 Pulongcun, Puxinhu Industry Area, Tangxia, Dongguan, Guangdong, China.

The lab has been recognized as the FCC accredited lab under the KDB 974614 D01 and is listed in the FCC Public Access Link (PAL) database, FCC Registration No. : 897218, the FCC Designation No. : CN1220.

The lab has been recognized by Innovation, Science and Economic Development Canada to test to Canadian radio equipment requirements, the CAB identifier : CN0022.

The test sites and measurement facilities used to collect data are located at:

<input type="checkbox"/> SAR Lab 1	<input checked="" type="checkbox"/> SAR Lab 2
------------------------------------	---



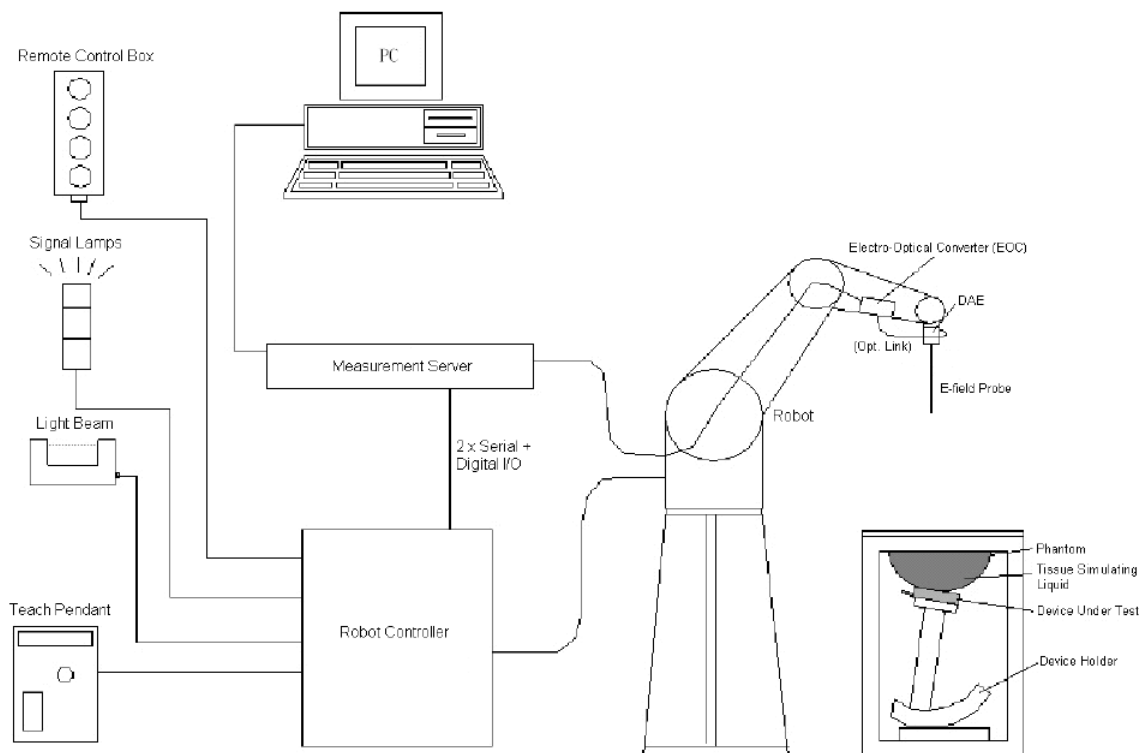
## DESCRIPTION OF TEST SYSTEM

These measurements were performed with the automated near-field scanning system DASY5 from Schmid & Partner Engineering AG (SPEAG) which is the Fifth generation of the system shown in the figure hereinafter:



### DASY5 System Description

The DASY5 system for performing compliance tests consists of the following items:



- A standard high precision 6-axis robot with controller, teach pendant and software. An arm extension for accommodating the data acquisition electronics (DAE).
- An isotropic field probe optimized and calibrated for the targeted measurement.
- A data acquisition electronics (DAE) which performs the signal application, signal multiplexing, AD-conversion, offset measurements, mechanical surface detection, collision detection, etc. The unit is battery powered with standard or rechargeable batteries. The signal is optically transmitted to the EOC.
- The Electro-optical converter (EOC) performs the conversion from optical to electrical signals for the digital communication to the DAE. To use optical surface detection, a special version of the EOC is required. The EOC signal is transmitted to the measurement server.
- The function of the measurement server is to perform the time critical tasks such as signal filtering, control of the robot operation and fast movement interrupts.
- The Light Beam used is for probe alignment. This improves the (absolute) accuracy of the probe positioning.
- A computer running Win7 professional operating system and the DASY52 software.
- Remote control and teach pendant as well as additional circuitry for robot safety such as warning lamps, etc.
- The phantom, the device holder and other accessories according to the targeted measurement.

### **DASY5 Measurement Server**

The DASY5 measurement server is based on a PC/104 CPU board with a 400MHz Intel ULV Celeron, 128MB chip-disk and 128MB RAM. The necessary circuits for communication with the DAE4 (or DAE3) electronics box, as well as the 16 bit AD-converter system for optical detection and digital I/O interface are contained on the DASY5 I/O board, which is directly connected to the PC/104 bus of the CPU board.



The measurement server performs all real-time data evaluation of field measurements and surface detection, controls robot movements and handles safety operation. The PC operating system cannot interfere with these time critical processes. All connections are supervised by a watchdog, and disconnection of any of the cables to the measurement server will automatically disarm the robot and disable all program-controlled robot movements. Furthermore, the measurement server is equipped with an expansion port which is reserved for future applications. Please note that this expansion port does not have a standardized point out, and therefore only devices provided by SPEAG can be connected. Devices from any other supplier could seriously damage the measurement server.

### **Data Acquisition Electronics**

The data acquisition electronics (DAE4) consist of a highly sensitive electrometer-grade preamplifier with auto-zeroing, a channel and gain-switching multiplexer, a fast 16 bit AD-converter and a command decoder with a control logic unit. Transmission to the measurement server is accomplished through an optical downlink for data and status information, as well as an optical uplink for commands and the clock.

The mechanical probe mounting device includes two different sensor systems for frontal and sideways probe contacts. They are used for mechanical surface detection and probe collision detection.

The input impedance of both the DAE4 as well as of the DAE3 box is 200M $\Omega$ ; the inputs are symmetrical and floating. Common mode rejection is above 80 dB.

**EX3DV4 E-Field Probes**

<b>Frequency</b>	10 MHz to > 6 GHz Linearity: $\pm 0.2$ dB (30 MHz to 6 GHz)
<b>Directivity</b>	$\pm 0.3$ dB in TSL (rotation around probe axis) $\pm 0.5$ dB in TSL (rotation normal to probe axis)
<b>Dynamic Range</b>	10 $\mu$ W/g to > 100 mW/g Linearity: $\pm 0.2$ dB (noise: typically < 1 $\mu$ W/g)
<b>Dimensions</b>	Overall length: 337 mm (Tip: 20 mm) Tip diameter: 2.5 mm (Body: 12 mm) Typical distance from probe tip to dipole centers: 1 mm
<b>Application</b>	High precision dosimetric measurements in any exposure scenario (e.g., very strong gradient fields); the only probe that enables compliance testing for frequencies up to 6 GHz with precision of better 30%.
<b>Compatibility</b>	DASY3, DASY4, DASY52 SAR and higher, EASY4/MRI

**Calibration Frequency Points for EX3DV4 E-Field Probes SN: 7329 Calibrated: 2019/10/22**

Calibration Frequency Point(MHz)	Frequency Range(MHz)		Conversion Factor		
	From	To	X	Y	Z
750 Head	650	850	9.97	9.97	9.97
750 Body	650	850	10.14	10.14	10.14
900 Head	850	1000	9.68	9.68	9.68
1450 Head	1350	1550	8.68	8.68	8.68
1750 Head	1650	1850	8.39	8.39	8.39
1900 Head	1850	2000	8.29	8.29	8.29
2300 Head	2200	2400	7.90	7.90	7.90
2450 Head	2400	2550	7.60	7.60	7.60
2600 Head	2550	2700	7.42	7.42	7.42
5200 Head	5090	5250	5.57	5.57	5.57
5300 Head	5250	5410	5.30	5.30	5.30
5600 Head	5490	5700	4.72	4.72	4.72
5800 Head	5700	5910	4.67	4.67	4.67

### SAM Twin Phantom

The SAM twin phantom is a fiberglass shell phantom with 2mm shell thickness (except the ear region, where shell thickness

increases to 6 mm). The phantom has three measurement areas:

- \_ Left Head
- \_ Right Head
- \_ Flat phantom

The phantom table for the DASY systems based on the robots have the size of 100 x 50 x 85 cm (L x W x H). For easy dislocation these tables have fork lift cut outs at the bottom.

The bottom plate contains three pairs of bolts for locking the device holder. The device holder positions are adjusted to the standard measurement positions in the three sections. Only one device holder is necessary if two phantoms are used (e.g., for different liquids)



A white cover is provided to cover the phantom during off-periods to prevent water evaporation and changes in the liquid parameters. Free space scans of devices on top of this phantom cover are possible. Three reference marks are provided on the phantom counter. These reference marks are used to teach the absolute phantom position relative to the robot.

### Robots

The DASY5 system uses the high precision industrial robot. The robot offers the same features important for our application:

- High precision (repeatability 0.02mm)
- High reliability (industrial design)
- Low maintenance costs (virtually maintenance free due to direct drive gears; no belt drives)
- Jerk-free straight movements (brushless synchrony motors; no stepper motors)
- Low ELF interference (motor control fields shielded via the closed metallic construction shields)

The above mentioned robots are controlled by the Staubli CS8c robot controllers. All information regarding the use and maintenance of the robot arm and the robot controller is contained on the CDs delivered along with the robot. Paper manuals are available upon request direct from Staubli.

### Area Scans

Area scans are defined prior to the measurement process being executed with a user defined variable spacing between each measurement point (integral) allowing low uncertainty measurements to be conducted. Scans defined for FCC applications utilize a 15mm 2 step integral, with 1.5mm interpolation used to locate the peak SAR area used for zoom scan assessments.

Where the system identifies multiple SAR peaks (which are within 25% of peak value) the system will provide the user with the option of assessing each peak location individually for zoom scan averaging.

### Zoom Scan (Cube Scan Averaging)

The averaging zoom scan volume utilized in the DASY5 software is in the shape of a cube and the side dimension of a 1 g or 10 g mass is dependent on the density of the liquid representing the simulated tissue. A density of 1000 kg/m<sup>3</sup> is used to represent the head and body tissue density and not the phantom liquid density, in order to be consistent with the definition of the liquid dielectric properties, i.e. the side length of the 1g cube is 10mm, with the side length of the 10g cube is 21.5mm.

When the cube intersects with the surface of the phantom, it is oriented so that 3 vertices touch the surface of the shell or the center of a face is tangent to the surface. The face of the cube closest to the surface is modified in order to conform to the tangent surface.

The zoom scan integer steps can be user defined so as to reduce uncertainty, but normal practice for typical test applications (including FCC) utilize a physical step of 7 x 7 x 7 (5mmx5mmx5mm) providing a volume of 30 mm in the X & Y & Z axis.

### Tissue Dielectric Parameters for Head and Body Phantoms

The head tissue dielectric parameters recommended by the IEC 62209-1:2016

#### Recommended Tissue Dielectric Parameters for Head liquid

**Table A.3 – Dielectric properties of the head tissue-equivalent liquid**

Frequency MHz	Relative permittivity $\epsilon_r$	Conductivity ( $\sigma$ ) S/m
300	45,3	0,87
450	43,5	0,87
750	41,9	0,89
835	41,5	0,90
900	41,5	0,97
1 450	40,5	1,20
1 500	40,4	1,23
1 640	40,2	1,31
1 750	40,1	1,37
1 800	40,0	1,40
1 900	40,0	1,40
2 000	40,0	1,40
2 100	39,8	1,49
2 300	39,5	1,67
2 450	39,2	1,80
2 600	39,0	1,96
3 000	38,5	2,40
3 500	37,9	2,91
4 000	37,4	3,43
4 500	36,8	3,94
5 000	36,2	4,45
5 200	36,0	4,66
5 400	35,8	4,86
5 600	35,5	5,07
5 800	35,3	5,27
6 000	35,1	5,48

NOTE For convenience, permittivity and conductivity values at those frequencies which are not part of the original data provided by Drossos et al. [33] or the extension to 5 800 MHz are provided (i.e. the values shown *in italics*). These values were linearly interpolated between the values in this table that are immediately above and below these values, except the values at 6 000 MHz that were linearly extrapolated from the values at 3 000 MHz and 5 800 MHz.

**Note:**

- 1, Effective February 19, 2019, FCC has permitted the use of single head-tissue simulating liquid specified in IEC 62209-1 for all SAR tests.
- 2, Mix and Match of traditional FCC SAR TSLs and IEC 62209-1 TSL in a single application is not permitted TSL can be changed in a Permissive Change.
- 3, If SAR increases and original SAR > 1.2 W/kg, additional SAR measurements will be required IEC 62209-1 TSL is an alternative, not mandatory at this time.
- 4, If FCC parameters are used,  $\pm 5\%$  tolerance. If IEC parameters,  $\pm 10\%$ .
- 5, In this case, IEC parameters applied.

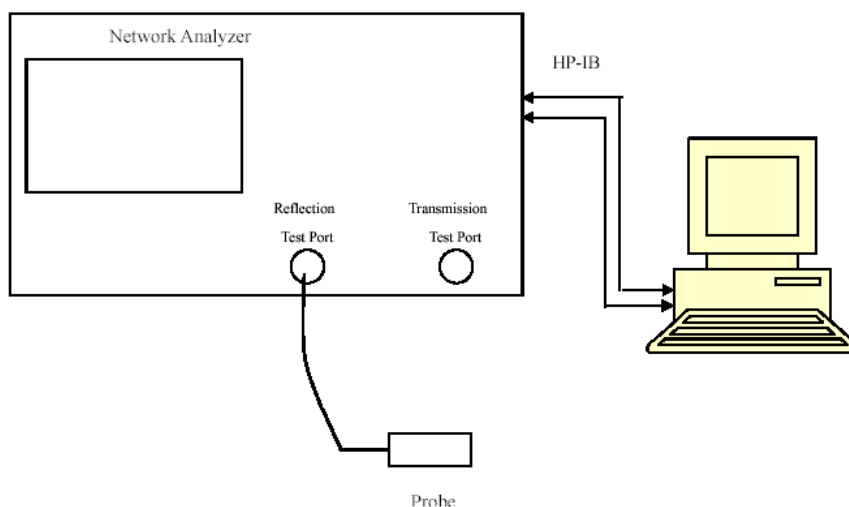
## EQUIPMENT LIST AND CALIBRATION

### Equipments List & Calibration Information

Equipment	Model	S/N	Calibration Date	Calibration Due Date
DASY5 Test Software	DASY52.10	N/A	NCR	NCR
DASY5 Measurement Server	DASY5 4.5.12	1567	NCR	NCR
Data Acquisition Electronics	DAE4	772	2019/10/6	2020/10/5
E-Field Probe	EX3DV4	7329	2019/10/22	2020/10/22
Mounting Device	MD4HHTV5	BJPCTC0152	NCR	NCR
Twin SAM	Twin SAM V5.0	1412	NCR	NCR
Dipole, 2450 MHz	D2450V2	971	2018/6/26	2021/6/25
Dipole, 5GHz	D5GHzV2	1246	2019/11/19	2022/11/18
Simulated Tissue 2450 MHz	TS-2450	1709245001	Each Time	/
Simulated Tissue 5250 MHz	TS-5250	1701525001	Each Time	/
Simulated Tissue 5300MHz	TS-5300	1701530001	Each Time	/
Simulated Tissue 5600 MHz	TS-5600	1701560001	Each Time	/
Simulated Tissue 5800 MHz	TS-5800	1701580001	Each Time	/
Network Analyzer	8753C	3033A02857	2019/8/3	2020/8/3
Dielectric assessment kit	1253	SM DAK 040 CA	NCR	NCR
Signal Generator	E8247C	MY43321350	2018/12/10	2019/12/10
EPM Series Power Meter	E4419B	MY45103907	2019/5/9	2020/5/9
Power Amplifier	ZVA-183-S+	5969001149	NCR	NCR
Directional Coupler	441493	520Z	NCR	NCR
Attenuator	20dB, 100W	LN749	NCR	NCR
Attenuator	6dB, 150W	2754	NCR	NCR

## SAR MEASUREMENT SYSTEM VERIFICATION

### Liquid Verification



Liquid Verification Setup Block Diagram

### Liquid Verification Results

Frequency (MHz)	Liquid Type	Liquid Parameter		Target Value		Delta (%)		Tolerance (%)
		$\epsilon_r$	$\sigma$ (S/m)	$\epsilon_r$	$\sigma$ (S/m)	$\Delta\epsilon_r$	$\Delta\sigma$ (S/m)	
2402	Simulated Tissue 2450 MHz	38.367	1.817	39.3	1.76	-2.37	3.24	$\pm 10$
2412	Simulated Tissue 2450 MHz	40.462	1.814	39.28	1.77	3.01	2.49	$\pm 10$
2441	Simulated Tissue 2450 MHz	40.308	1.83	39.22	1.79	2.77	2.23	$\pm 10$
2442	Simulated Tissue 2450 MHz	40.296	1.831	39.22	1.79	2.74	2.29	$\pm 10$
2450	Simulated Tissue 2450 MHz	40.211	1.834	39.2	1.8	2.58	1.89	$\pm 10$
2462	Simulated Tissue 2450 MHz	39.942	1.829	39.18	1.81	1.94	1.05	$\pm 10$
2480	Simulated Tissue 2450 MHz	39.911	1.856	39.16	1.83	1.92	1.42	$\pm 10$

\*Liquid Verification above was performed on 2019/11/28.

Frequency (MHz)	Liquid Type	Liquid Parameter		Target Value		Delta (%)		Tolerance (%)
		$\epsilon_r$	$\sigma$ (S/m)	$\epsilon_r$	$\sigma$ (S/m)	$\Delta\epsilon_r$	$\Delta\sigma$ (S/m)	
5180	Simulated Tissue 5250 MHz	36.921	4.524	36.01	4.63	2.53	-2.29	$\pm 10$
5200	Simulated Tissue 5250 MHz	36.864	4.608	35.99	4.66	2.43	-1.12	$\pm 10$
5240	Simulated Tissue 5250 MHz	36.733	4.615	35.94	4.7	2.21	-1.81	$\pm 10$
5250	Simulated Tissue 5250 MHz	36.64	4.676	35.93	4.71	1.98	-0.72	$\pm 10$

\*Liquid Verification above was performed on 2019/11/28.



Frequency (MHz)	Liquid Type	Liquid Parameter		Target Value		Delta (%)		Tolerance (%)
		$\epsilon_r$	$\sigma$ (S/m)	$\epsilon_r$	$\sigma$ (S/m)	$\Delta\epsilon_r$	$\Delta\sigma$ (S/m)	
5260	Simulated Tissue 5300 MHz	36.628	4.685	35.92	4.72	1.97	-0.74	$\pm 10$
5280	Simulated Tissue 5300 MHz	36.622	4.78	35.89	4.74	2.04	0.84	$\pm 10$
5300	Simulated Tissue 5300 MHz	36.352	4.827	35.87	4.76	1.34	1.41	$\pm 10$
5320	Simulated Tissue 5300 MHz	36.601	4.935	35.85	4.78	2.09	3.24	$\pm 10$

\*Liquid Verification above was performed on 2019/11/28.

Frequency (MHz)	Liquid Type	Liquid Parameter		Target Value		Delta (%)		Tolerance (%)
		$\epsilon_r$	$\sigma$ (S/m)	$\epsilon_r$	$\sigma$ (S/m)	$\Delta\epsilon_r$	$\Delta\sigma$ (S/m)	
5500	Simulated Tissue 5600 MHz	36.394	4.924	35.64	4.96	2.12	-0.73	$\pm 10$
5580	Simulated Tissue 5600 MHz	36.006	5.187	35.55	5.04	1.28	2.92	$\pm 10$
5600	Simulated Tissue 5600 MHz	35.972	5.1	35.53	5.07	1.24	0.59	$\pm 10$
5700	Simulated Tissue 5600 MHz	35.65	5.146	35.41	5.17	0.68	-0.46	$\pm 10$

\*Liquid Verification above was performed on 2019/11/28.

Frequency (MHz)	Liquid Type	Liquid Parameter		Target Value		Delta (%)		Tolerance (%)
		$\epsilon_r$	$\sigma$ (S/m)	$\epsilon_r$	$\sigma$ (S/m)	$\Delta\epsilon_r$	$\Delta\sigma$ (S/m)	
5745	Simulated Tissue 5800 MHz	34.955	5.278	35.36	5.21	-1.15	1.31	$\pm 10$
5785	Simulated Tissue 5800 MHz	34.866	5.298	35.32	5.25	-1.29	0.91	$\pm 10$
5800	Simulated Tissue 5800 MHz	34.719	5.375	35.3	5.27	-1.65	1.99	$\pm 10$
5825	Simulated Tissue 5800 MHz	34.311	5.487	35.27	5.3	-2.72	3.53	$\pm 10$

\*Liquid Verification above was performed on 2019/11/28.

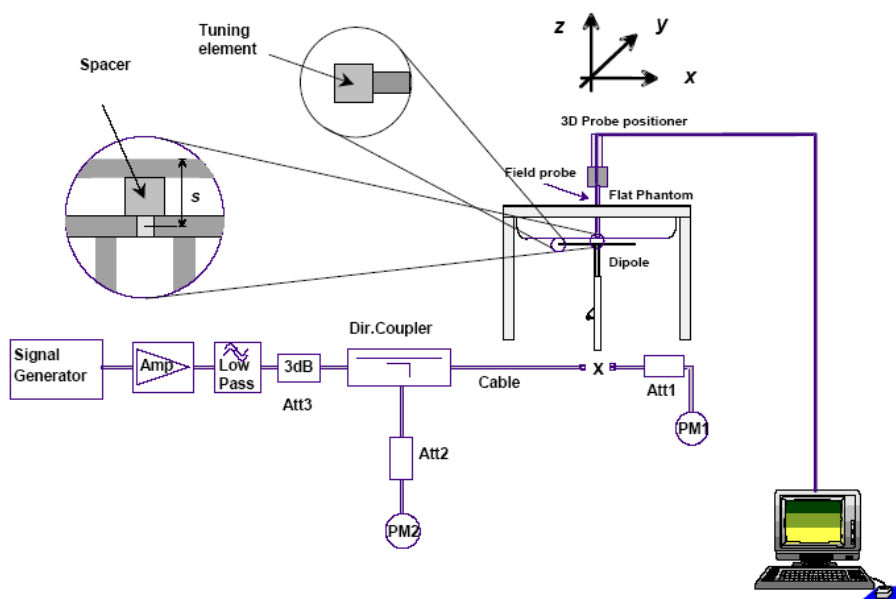
## System Accuracy Verification

Prior to the assessment, the system validation kit was used to test whether the system was operating within its specifications of  $\pm 10\%$ . The validation results are tabulated below. And also the corresponding SAR plot is attached as well in the SAR plots files.

The spacing distances in the **System Verification Setup Block Diagram** is given by the following:

- $s = 15 \text{ mm} \pm 0,2 \text{ mm}$  for  $300 \text{ MHz} \leq f \leq 1\,000 \text{ MHz}$ ;
- $s = 10 \text{ mm} \pm 0,2 \text{ mm}$  for  $1\,000 \text{ MHz} < f \leq 3\,000 \text{ MHz}$ ;
- $s = 10 \text{ mm} \pm 0,2 \text{ mm}$  for  $3\,000 \text{ MHz} < f \leq 6\,000 \text{ MHz}$ .

## System Verification Setup Block Diagram



## System Accuracy Check Results

Date	Frequency Band	Liquid Type	Input Power (mW)	Measured SAR (W/kg)		Normalized to 1W (W/kg)	Target Value (W/kg)	Delta (%)	Tolerance (%)
2019/11/28	2450 MHz	Simulated Tissue 2450 MHz	100	1g	5.19	51.9	53.3	-2.63	$\pm 10$
2019/11/28	5250 MHz	Simulated Tissue 5250 MHz	100	1g	7.84	78.4	75.0	4.53	$\pm 10$
2019/11/28	5300 MHz	Simulated Tissue 5300 MHz	100	1g	7.44	74.4	77.2	-3.63	$\pm 10$
2019/11/28	5600 MHz	Simulated Tissue 5600 MHz	100	1g	7.82	78.2	79.8	-2.01	$\pm 10$
2019/11/28	5800 MHz	Simulated Tissue 5800 MHz	100	1g	7.94	79.4	77.9	1.93	$\pm 10$

\*The SAR values above are normalized to 1 Watt forward power.

## SAR SYSTEM VALIDATION DATA

### System Performance 2450 MHz

**DUT: D2450V2; Type: 2450 MHz; Serial: 971**

Communication System: CW; Frequency: 2450 MHz; Duty Cycle: 1:1

Medium parameters used:  $f = 2450$  MHz;  $\sigma = 1.834$  S/m;  $\epsilon_r = 40.211$ ;  $\rho = 1000$  kg/m<sup>3</sup>

Phantom section: Flat Section

DASY5 Configuration:

- Probe: EX3DV4 - SN7329; ConvF(7.6, 7.6, 7.6) @ 2450 MHz; Calibrated: 2019/10/22
- Sensor-Surface: 1.4mm (Mechanical Surface Detection)
- Electronics: DAE4 Sn772; Calibrated: 2019/10/6
- Phantom: Twin SAM; Type: Twin SAM V5.0; Serial: TP:1412
- Measurement SW: DASY52, Version 52.10 (2); SEMCAD X Version 14.6.12 (7470)

**Area Scan (51x61x1):** Interpolated grid:  $dx=1.200$  mm,  $dy=1.200$  mm

Maximum value of SAR (interpolated) = 9.11 W/kg

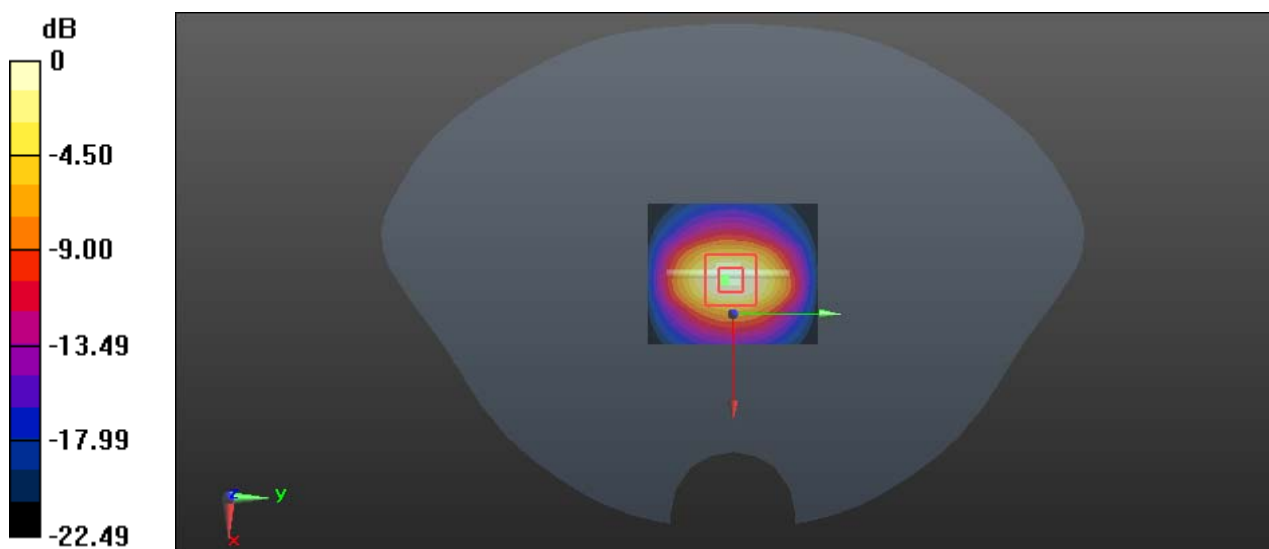
**Zoom Scan (5x5x7)/Cube 0:** Measurement grid:  $dx=8$ mm,  $dy=8$ mm,  $dz=5$ mm

Reference Value = 56.84 V/m; Power Drift = 0.02 dB

Peak SAR (extrapolated) = 10.7 W/kg

**SAR(1 g) = 5.19 W/kg; SAR(10 g) = 2.37 W/kg**

Maximum value of SAR (measured) = 8.62 W/kg



**System Performance 5250 MHz****DUT: Dipole D5GHzV2; Type: 5250 MHz; Serial: SN:1246**

Communication System: CW; Frequency: 5250 MHz; Duty Cycle: 1:1

Medium parameters used:  $f = 5250$  MHz;  $\sigma = 4.676$  S/m;  $\epsilon_r = 36.64$ ;  $\rho = 1000$  kg/m<sup>3</sup>

Phantom section: Flat Section

DASY5 Configuration:

- Probe: EX3DV4 - SN7329; ConvF(5.57, 5.57, 5.57) @ 5250 MHz; Calibrated: 2019/10/22
- Sensor-Surface: 1.4mm (Mechanical Surface Detection)
- Electronics: DAE4 Sn772; Calibrated: 2019/10/6
- Phantom: Twin SAM; Type: Twin SAM V5.0; Serial: TP:1412
- Measurement SW: DASY52, Version 52.10 (2); SEMCAD X Version 14.6.12 (7470)

**Area Scan (31x51x1):** Interpolated grid: dx=1.000 mm, dy=1.000 mm

Maximum value of SAR (interpolated) = 20.1 W/kg

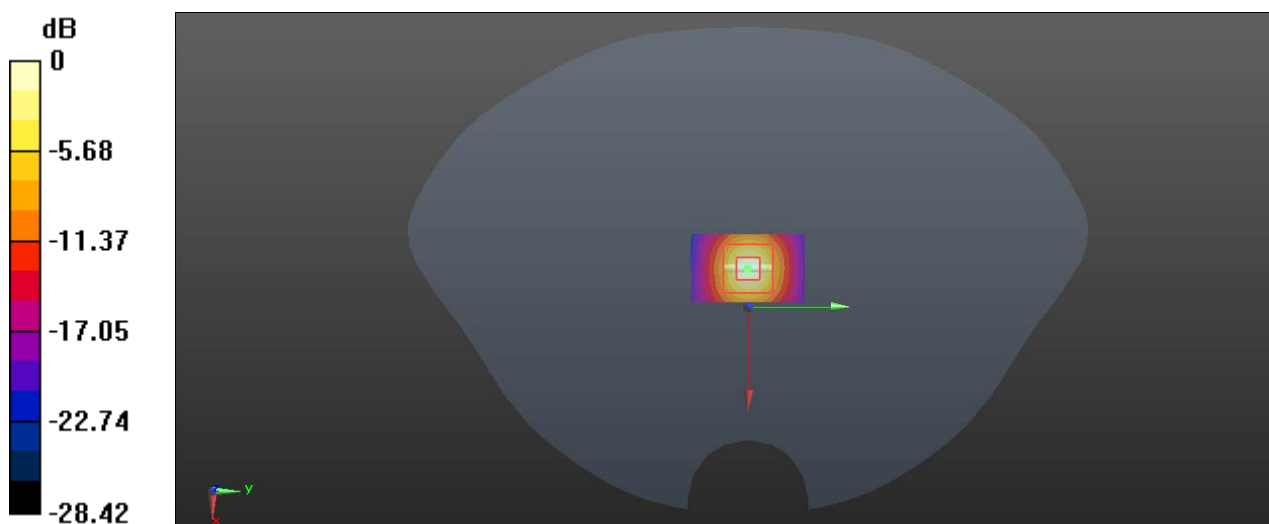
**Zoom Scan (7x7x6)/Cube 0:** Measurement grid: dx=5mm, dy=5mm, dz=2mm

Reference Value = 43.35 V/m; Power Drift = 0.07 dB

Peak SAR (extrapolated) = 29.6 W/kg

**SAR(1 g) = 7.84 W/kg; SAR(10 g) = 2.25 W/kg**

Maximum value of SAR (measured) = 19.5 W/kg



0 dB = 19.5 W/kg = 12.90 dBW/kg

**System Performance 5300 MHz****DUT: Dipole D5GHzV2; Type: 5300 MHz; Serial: SN:1246**

Communication System: CW; Frequency: 5300 MHz; Duty Cycle: 1:1

Medium parameters used:  $f = 5300$  MHz;  $\sigma = 4.827$  S/m;  $\epsilon_r = 36.352$ ;  $\rho = 1000$  kg/m<sup>3</sup>

Phantom section: Flat Section

DASY5 Configuration:

- Probe: EX3DV4 - SN7329; ConvF(5.3, 5.3, 5.3) @ 5300 MHz; Calibrated: 2019/10/22
- Sensor-Surface: 1.4mm (Mechanical Surface Detection)
- Electronics: DAE4 Sn772; Calibrated: 2019/10/6
- Phantom: Twin SAM; Type: Twin SAM V5.0; Serial: TP:1412
- Measurement SW: DASY52, Version 52.10 (2); SEMCAD X Version 14.6.12 (7470)

**Area Scan (61x61x1):** Interpolated grid: dx=1.000 mm, dy=1.000 mm

Maximum value of SAR (interpolated) = 20.8 W/kg

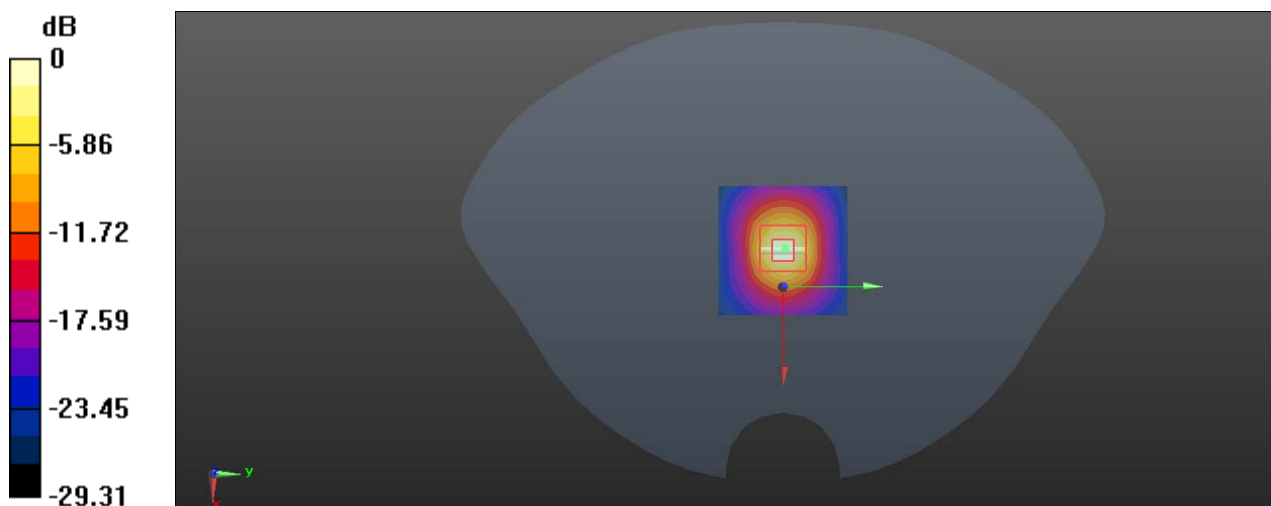
**Zoom Scan (7x7x6)/Cube 0:** Measurement grid: dx=5mm, dy=5mm, dz=2mm

Reference Value = 39.79 V/m; Power Drift = 0.04 dB

Peak SAR (extrapolated) = 35.8 W/kg

**SAR(1 g) = 7.44 W/kg; SAR(10 g) = 2.11 W/kg**

Maximum value of SAR (measured) = 20.1 W/kg



0 dB = 20.1 W/kg = 13.03 dBW/kg

**System Performance 5600 MHz****DUT: Dipole D5GHzV2; Type: 5600 MHz; Serial: SN:1246**

Communication System: CW; Frequency: 5600 MHz; Duty Cycle: 1:1

Medium parameters used:  $f = 5600$  MHz;  $\sigma = 5.1$  S/m;  $\epsilon_r = 35.972$ ;  $\rho = 1000$  kg/m<sup>3</sup>

Phantom section: Flat Section

DASY5 Configuration:

- Probe: EX3DV4 - SN7329; ConvF(4.72, 4.72, 4.72) @ 5600 MHz; Calibrated: 2019/10/22
- Sensor-Surface: 1.4mm (Mechanical Surface Detection)
- Electronics: DAE4 Sn772; Calibrated: 2019/10/6
- Phantom: Twin SAM; Type: Twin SAM V5.0; Serial: TP:1412
- Measurement SW: DASY52, Version 52.10 (2); SEMCAD X Version 14.6.12 (7470)

**Area Scan (61x61x1):** Interpolated grid: dx=1.000 mm, dy=1.000 mm

Maximum value of SAR (interpolated) = 20.8 W/kg

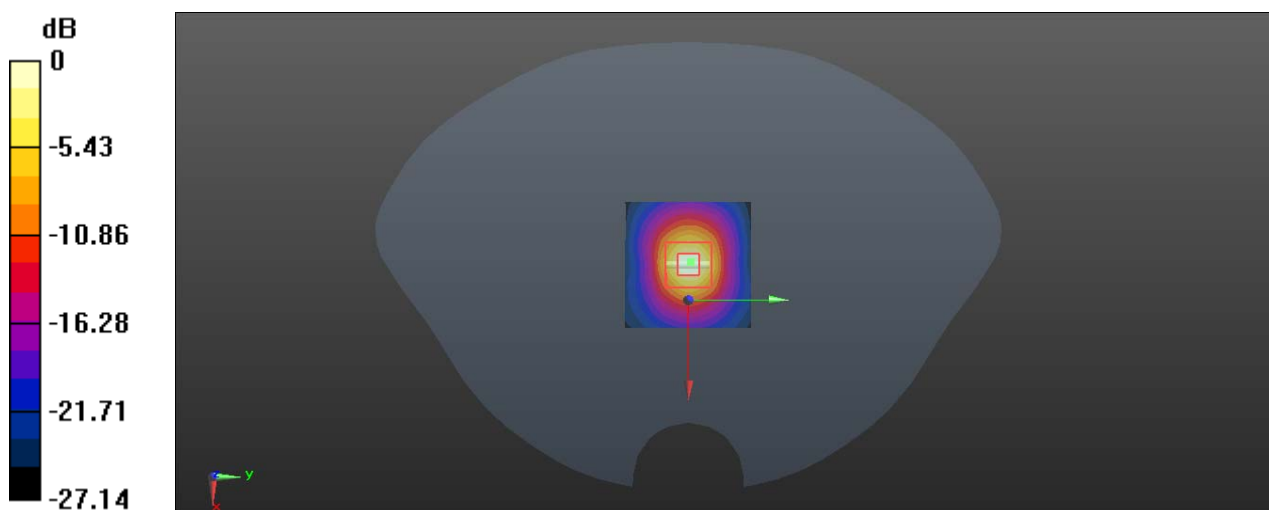
**Zoom Scan (7x7x6)/Cube 0:** Measurement grid: dx=5mm, dy=5mm, dz=2mm

Reference Value = 40.57 V/m; Power Drift = 0.06 dB

Peak SAR (extrapolated) = 38.2 W/kg

**SAR(1 g) = 7.82 W/kg; SAR(10 g) = 2.18 W/kg**

Maximum value of SAR (measured) = 21.2 W/kg



0 dB = 21.2 W/kg = 13.26 dBW/kg

**System Performance 5800 MHz****DUT: Dipole D5GHzV2; Type: 5800 MHz; Serial: 1246**

Communication System: CW; Frequency: 5800 MHz; Duty Cycle: 1:1

Medium parameters used:  $f = 5800$  MHz;  $\sigma = 5.375$  S/m;  $\epsilon_r = 34.719$ ;  $\rho = 1000$  kg/m<sup>3</sup>

Phantom section: Flat Section

DASY5 Configuration:

- Probe: EX3DV4 - SN7329; ConvF(4.67, 4.67, 4.67) @ 5800 MHz; Calibrated: 2019/10/22
- Sensor-Surface: 1.4mm (Mechanical Surface Detection)
- Electronics: DAE4 Sn772; Calibrated: 2019/10/6
- Phantom: Twin SAM; Type: Twin SAM V5.0; Serial: TP:1412
- Measurement SW: DASY52, Version 52.10 (2); SEMCAD X Version 14.6.12 (7470)

**Area Scan (31x51x1):** Interpolated grid: dx=1.000 mm, dy=1.000 mm

Maximum value of SAR (interpolated) = 21.7 W/kg

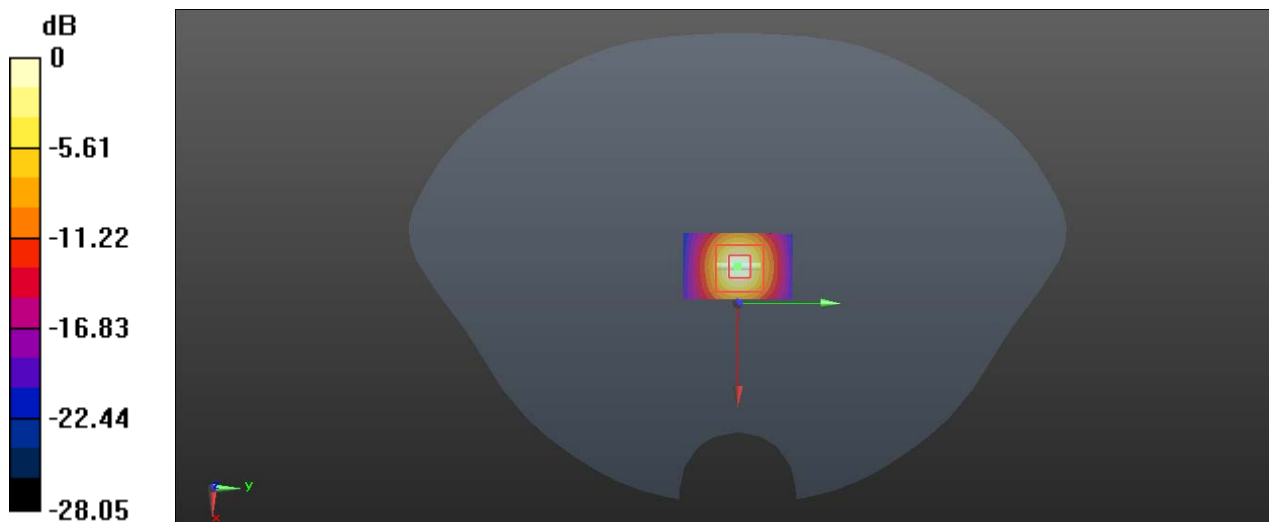
**Zoom Scan (7x7x6)/Cube 0:** Measurement grid: dx=5mm, dy=5mm, dz=2mm

Reference Value = 42.41 V/m; Power Drift = -0.08 dB

Peak SAR (extrapolated) = 31.3 W/kg

**SAR(1 g) = 7.94 W/kg; SAR(10 g) = 2.29 W/kg**

Maximum value of SAR (measured) = 19.6 W/kg



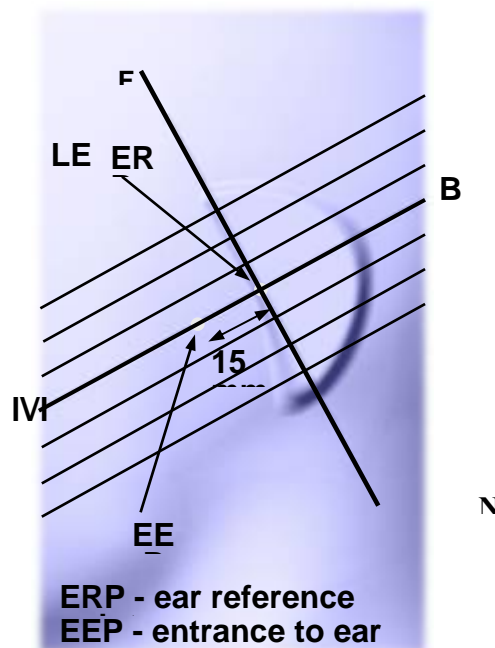
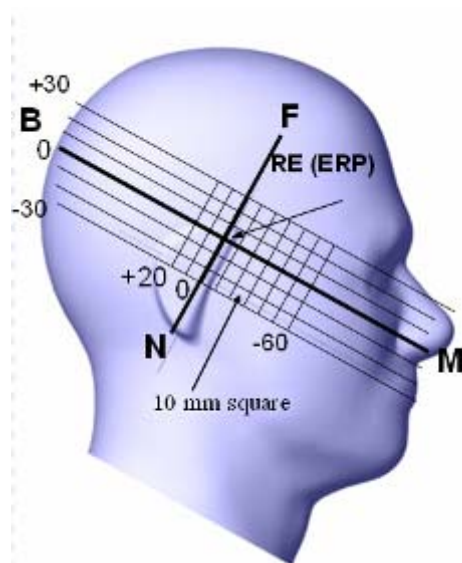
0 dB = 19.6 W/kg = 12.92 dBW/kg

## EUT TEST STRATEGY AND METHODOLOGY

### Test Positions for Device Operating Next to a Person's Ear

This category includes most wireless handsets with fixed, retractable or internal antennas located toward the top half of the device, with or without a foldout, sliding or similar keypad cover. The handset should have its earpiece located within the upper ¼ of the device, either along the centerline or off-centered, as perceived by its users. This type of handset should be positioned in a normal operating position with the “test device reference point” located along the “vertical centerline” on the front of the device aligned to the “ear reference point”. The “test device reference point” should be located at the same level as the center of the earpiece region. The “vertical centerline” should bisect the front surface of the handset at its top and bottom edges. A “ear reference point” is located on the outer surface of the head phantom on each ear spacer. It is located 1.5 cm above the center of the ear canal entrance in the “phantom reference plane” defined by the three lines joining the center of each “ear reference point” (left and right) and the tip of the mouth.

A handset should be initially positioned with the earpiece region pressed against the ear spacer of a head phantom. For the SCC-34/SC-2 head phantom, the device should be positioned parallel to the “N-F” line defined along the base of the ear spacer that contains the “ear reference point”. For interim head phantoms, the device should be positioned parallel to the cheek for maximum RF energy coupling. The “test device reference point” is aligned to the “ear reference point” on the head phantom and the “vertical centerline” is aligned to the “phantom reference plane”. This is called the “initial ear position”. While maintaining these three alignments, the body of the handset is gradually adjusted to each of the following positions for evaluating SAR:





## Cheek/Touch Position

The device is brought toward the mouth of the head phantom by pivoting against the “ear reference point” or along the “N-F” line for the SCC-34/SC-2 head phantom.

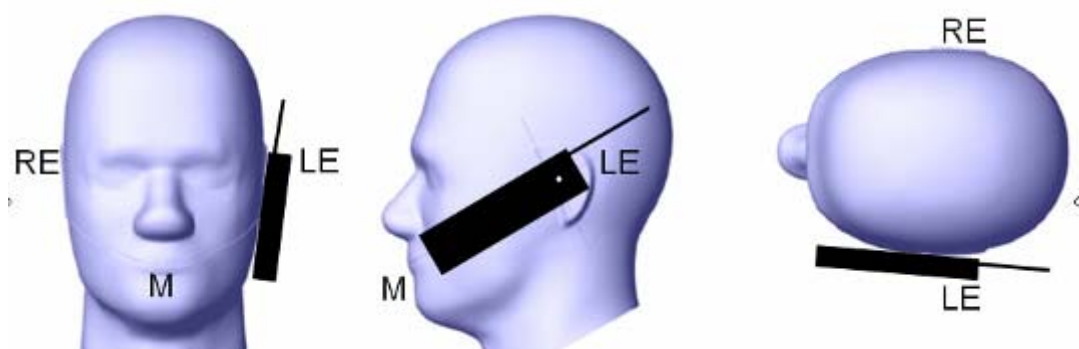
This test position is established:

When any point on the display, keypad or mouthpiece portions of the handset is in contact with the phantom.

(or) When any portion of a foldout, sliding or similar keypad cover opened to its intended self-adjusting normal use position is in contact with the cheek or mouth of the phantom.

For existing head phantoms – when the handset loses contact with the phantom at the pivoting point, rotation should continue until the device touches the cheek of the phantom or breaks its last contact from the ear spacer.

### Cheek /Touch Position



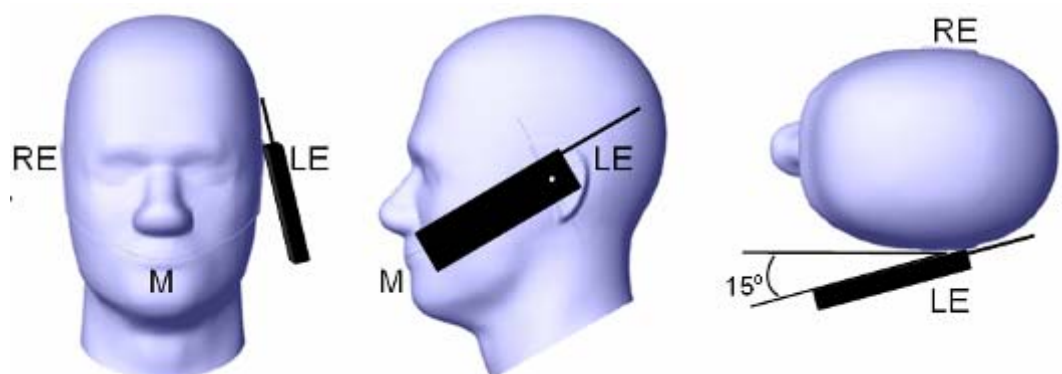
## Ear/Tilt Position

With the handset aligned in the “Cheek/Touch Position”:

1) If the earpiece of the handset is not in full contact with the phantom’s ear spacer (in the “Cheek/Touch position”) and the peak SAR location for the “Cheek/Touch” position is located at the ear spacer region or corresponds to the earpiece region of the handset, the device should be returned to the “initial ear position” by rotating it away from the mouth until the earpiece is in full contact with the ear spacer.

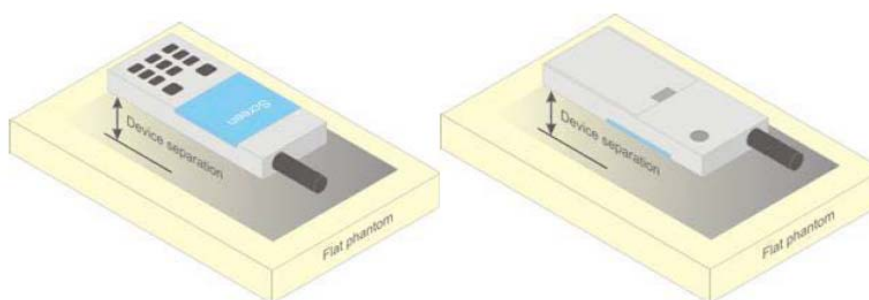
2) (otherwise) The handset should be moved (translated) away from the cheek perpendicular to the line passes through both “ear reference points” (note: one of these ear reference points may not physically exist on a split head model) for approximate 2-3 cm. While it is in this position, the device handset is tilted away from the mouth with respect to the “test device reference point” until the inside angle between the vertical centerline on the front surface of the phone and the horizontal line passing through the ear reference point is by  $15^{\circ}$  to  $80^{\circ}$ . After the tilt, it is then moved (translated) back toward the head perpendicular to the line passes through both “ear reference points” until the device touches the phantom or the ear spacer. If the antenna touches the head first, the positioning process should be repeated with a tilt angle less than  $15^{\circ}$  so that the device and its antenna would touch the phantom simultaneously. This test position may require a device holder or positioner to achieve the translation and tilting with acceptable positioning repeatability.

If a device is also designed to transmit with its keypad cover closed for operating in the head position, such positions should also be considered in the SAR evaluation. The device should be tested on the left and right side of the head phantom in the “Cheek/Touch” and “Ear/Tilt” positions. When applicable, each configuration should be tested with the antenna in its fully extended and fully retracted positions. These test configurations should be tested at the high, middle and low frequency channels of each operating mode; for example, AMPS, CDMA, and TDMA. If the SAR measured at the middle channel for each test configuration (left, right, Cheek/Touch, Tilt/Ear, extended and retracted) is at least 2.0 dB lower than the SAR limit, testing at the high and low channels is optional for such test configuration(s). If the transmission band of the test device is less than 10 MHz, testing at the high and low frequency channels is optional.

**Ear /Tilt 15° Position****Test positions for body-worn and other configurations**

Body-worn operating configurations should be tested with the belt-clips and holsters attached to the device and positioned against a flat phantom in normal use configurations. Devices with a headset output should be tested with a headset connected to the device. When multiple accessories that do not contain metallic components are supplied with the device, the device may be tested with only the accessory that dictates the closest spacing to the body. When multiple accessories that contain metallic components are supplied with the device, the device must be tested with each accessory that contains a unique metallic component. If multiple accessories share an identical metallic component (e.g., the same metallic belt-clip used with different holsters with no other metallic components), only the accessory that dictates the closest spacing to the body must be tested.

Body-worn accessories may not always be supplied or available as options for some devices that are intended to be authorized for body-worn use. A separation distance of 1.5 cm between the back of the device and a flat phantom is recommended for testing body-worn SAR compliance under such circumstances. Other separation distances may be used, but they should not exceed 2.5 cm. In these cases, the device may use body-worn accessories that provide a separation distance greater than that tested for the device provided however that the accessory contains no metallic components.



**Figure 5 – Test positions for body-worn devices**

**Test Distance for SAR Evaluation**

In this case the EUT(Equipment Under Test) is set directly against the phantom, the test distance is 0mm.

## SAR Evaluation Procedure

The evaluation was performed with the following procedure:

Step 1: Measurement of the SAR value at a fixed location above the ear point or central position was used as a reference value for assessing the power drop. The SAR at this point is measured at the start of the test and then again at the end of the testing.

Step 2: The SAR distribution at the exposed side of the head was measured at a distance of 4 mm from the inner surface of the shell. The area covered the entire dimension of the head or radiating structures of the EUT, the horizontal grid spacing was 15 mm x 15 mm, and the SAR distribution was determined by integrated grid of 1.5mm x 1.5mm. Based on these data, the area of the maximum absorption was determined by spline interpolation. The first Area Scan covers the entire dimension of the EUT to ensure that the hotspot was correctly identified.

Step 3: Around this point, a volume of 30 mm x 30 mm x 30 mm was assessed by measuring 7x 7 x 7 points. On the basis of this data set, the spatial peak SAR value was evaluated under the following procedure:

1) The data at the surface were extrapolated, since the center of the dipoles is 1.2 mm away from the tip of the probe and the distance between the surface and the lowest measuring point is 1.3 mm. The extrapolation was based on a least square algorithm. A polynomial of the fourth order was calculated through the points in z-axes. This polynomial was then used to evaluate the points between the surface and the probe tip.

2) The maximum interpolated value was searched with a straightforward algorithm. Around this maximum the SAR values averaged over the spatial volumes (1 g or 10 g) were computed by the 3D-Spline interpolation algorithm. The 3D-Spline is composed of three one dimensional splines with the "Not a knot"-condition (in x, y and z-directions). The volume was integrated with the trapezoidal-algorithm. One thousand points (10 x 10 x 10) were interpolated to calculate the averages.

All neighboring volumes were evaluated until no neighboring volume with a higher average value was found.

Step 4: Re-measurement of the SAR value at the same location as in Step 1. If the value changed by more than 5%, the evaluation was repeated.

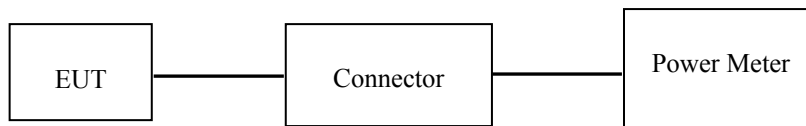
## CONDUCTED OUTPUT POWER MEASUREMENT

### Provision Applicable

The measured peak output power should be greater and within 5% than EMI measurement.

### Test Procedure

The RF output of the transmitter was connected to the input of the Power Meter through Connector.



### WLAN

### Maximum Target Output Power

Frequency Band	Mode	Maximum Target Output Power (dBm)	
		Main (Chain 0)	Aux (Chain 1)
Bluetooth		/	12.0
BLE		/	9.0
WLAN 2.4GHz SISO	802.11 b	20.3	20.3
	802.11 g	20.3	20.3
	802.11 n20	18.0	18.0
	802.11 n40	16.0	16.0
WLAN 2.4GHz MIMO	802.11 n20	19.0	19.0
	802.11 n40	16.0	16.0
WLAN 5.2GHz SISO	802.11 a	13.3	13.3
	802.11 n20	11.5	11.5
	802.11 n40	10.5	10.5
	802.11 ac80	7	7
WLAN 5.2GHz MIMO	802.11 n20	12.5	12.5
	802.11 n40	11.5	11.5
	802.11 ac80	5	5
WLAN 5.3GHz SISO	802.11 a	13.5	13.5
	802.11 n20	11	11
	802.11 n40	11	11
	802.11 ac80	5	5
WLAN 5.3GHz MIMO	802.11 n20	12.5	12.5
	802.11 n40	12.5	12.5
	802.11 ac80	3	3

Frequency Band	Mode	Maximum Target Output Power (dBm)	
		Main (Chain 0)	Aux (Chain 1)
WLAN 5.6GHz SISO	802.11 a	13	13
	802.11 n20	12	12
	802.11 n40	12	12
	802.11 ac80	12	12
WLAN 5.6GHz MIMO	802.11 n20	12	12
	802.11 n40	13	13
	802.11 ac80	13	13
WLAN 5.8GHz SISO	802.11 a	13.1	12
	802.11 n20	12	12
	802.11 n40	12	12
	802.11 ac80	12	12
WLAN 5.8GHz MIMO	802.11 n20	13	12
	802.11 n40	13	12
	802.11 ac80	10	10

**Test Results:****Bluetooth:**

Mode	Channel frequency (MHz)	RF Output Power (dBm)
BDR(GFSK)	2402	<b>11.95</b>
	2441	11.88
	2480	11.89
EDR( $\pi/4$ -DQPSK)	2402	11.79
	2441	11.93
	2480	11.90
EDR(8DPSK)	2402	11.46
	2441	11.69
	2480	11.85
BLE	2402	7.87
	2440	8.83
	2480	<b>8.92</b>

**WLAN 2.4G:****SISO:**

Mode	Frequency (MHz)	Data Rate	Conducted Average Output Power (dBm)	
			Main(Chain 0)	Aux(Chain 1)
802.11 b	2412	1Mbps	18.76	20.13
	2442		20.03	20.11
	2462		18.73	<b>20.23</b>
	2467		14.68	15.93
	2472		8.10	8.45
802.11 g	2412	6Mbps	16.55	18.06
	2442		19.06	19.08
	2462		17.08	18.12
	2467		12.52	12.71
	2472		-3.50	-2.46
802.11 n20	2412	MCS0	16.49	16.56
	2442		17.92	17.86
	2462		15.76	17.02
	2467		12.08	11.97
	2472		-3.22	-3.26
802.11 n40	2422	MCS0	12.90	15.57
	2442		15.58	15.81
	2452		14.98	15.00
	2457		11.35	12.04
	2462		-4.32	-3.66

**MIMO:**

Mode	Frequency (MHz)	Data Rate	Conducted Average Output Power (dBm)	
			Main(Chain 0)	Aux(Chain 1)
802.11 n20	2412	MCS0	14.12	14.66
	2442		18.77	18.96
	2462		15.42	15.60
	2467		8.06	7.82
	2472		-7.56	-7.30
802.11 n40	2422	MCS0	12.69	13.29
	2442		14.56	15.75
	2452		12.76	12.98
	2457		11.08	11.77
	2462		-6.16	-6.21

**WLAN 5G (SISO):**

Frequency Band	Mode	Frequency (MHz)	Data Rate	Conducted Average Output Power (dBm)	
				Main (Chain 0)	Aux (Chain 1)
WLAN 5.2GHz	802.11 a	5180	6Mbps	13.27	13.05
		5200		13.19	13.17
		5240		13.17	13.19
	802.11 n20	5180	MCS0	11.14	10.41
		5200		11.47	11.17
		5240		11.36	11.27
	802.11 n40	5190	MCS0	10.21	9.91
		5230		10.33	10.18
	802.11 ac80	5210	MCS0	6.22	6.34
WLAN 5.3GHz	802.11 a	5260	6Mbps	13.22	13.37
		5280		13.35	<b>13.46</b>
		5320		13.43	13.28
	802.11 n20	5260	MCS0	10.34	10.92
		5280		10.29	10.98
		5320		10.34	10.05
	802.11 n40	5270	MCS0	10.51	10.18
		5310		6.01	6.97
	802.11 ac80	5290	MCS0	4.65	4.89
WLAN 5.6GHz	802.11 a	5500	6Mbps	12.97	12.71
		5600		12.95	12.89
		5700		12.90	12.91
	802.11 n20	5500	MCS0	10.46	10.49
		5600		10.91	11.19
		5700		10.33	11.14
		5720 <sup>Note*</sup>		11.84	11.43
	802.11 n40	5510	MCS0	11.47	8.50
		5590		11.95	11.90
		5670		11.92	11.88
		5710 <sup>Note*</sup>		11.66	11.91
	802.11 ac80	5530	MCS0	5.37	8.22
		5610		11.29	10.57
		5690 <sup>Note*</sup>		11.66	10.93



Frequency Band	Mode	Frequency (MHz)	Data Rate	Conducted Average Output Power (dBm)	
				Main (Chain 0)	Aux (Chain 1)
WLAN 5.8GHz	802.11 a	5745	6Mbps	12.98	11.88
		5785		13.07	11.85
		5825		13.01	11.89
	802.11 n20	5720 <sup>Note*</sup>	MCS0	4.42	4.73
		5745		11.93	11.32
		5785		11.87	11.36
		5825		11.97	11.27
	802.11 n40	5710 <sup>Note*</sup>	MCS0	0.56	0.96
		5755		11.93	11.40
		5795		11.96	11.28
	802.11 ac80	5690 <sup>Note*</sup>	MCS0	-4.09	-3.95
		5775		11.76	11.01

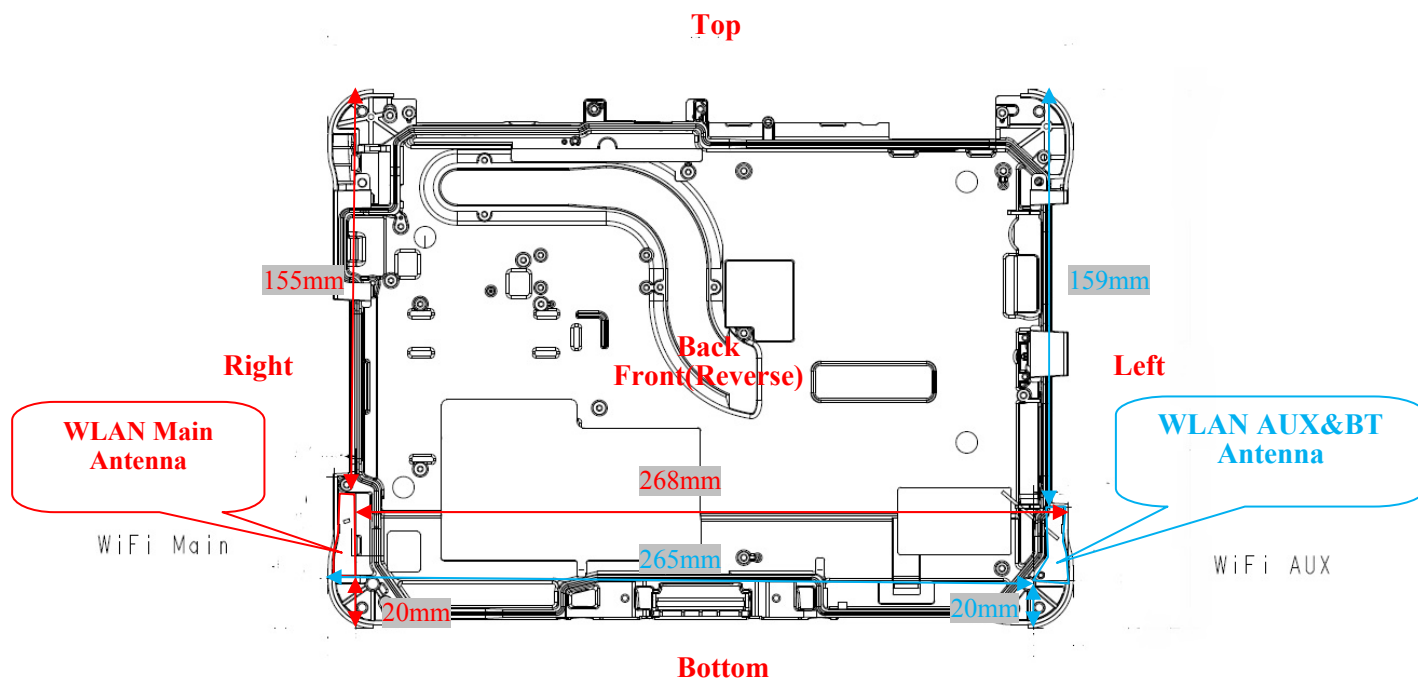
**WLAN 5G (MIMO):**

Frequency Band	Mode	Frequency (MHz)	Data Rate	Conducted Average Output Power(dBm)	
				Main (Chain 0)	Aux (Chain 1)
WLAN 5.2GHz	802.11 n20	5180	MCS8	8.8	8.49
		5200		12.22	11.83
		5240		12.06	12.09
	802.11 n40	5190	MCS8	4.89	4.84
		5230		11.28	11.22
	802.11 ac80	5210	MCS8	3.75	3.73
WLAN 5.3GHz	802.11 n20	5260	MCS8	12.14	12.03
		5280		12.13	11.8
		5320		5.77	5.78
	802.11 n40	5270	MCS8	12.12	11.97
		5310		4.09	3.79
	802.11 ac80	5290	MCS8	2.51	2.61
WLAN 5.6GHz	802.11 n20	5500	MCS8	9.41	9.01
		5600		11.79	11.87
		5700		7.99	8.94
		5720 <sup>Note*</sup>		10.77	11.39
	802.11 n40	5510	MCS8	5.23	5.31
		5590		12.94	12.88
		5670		10.86	10.42
		5710 <sup>Note*</sup>		12.48	12.90
	802.11 ac80	5530	MCS8	3.5	3.12
		5610		11.13	10.52
		5690 <sup>Note*</sup>		12.50	12.70
WLAN 5.8GHz	802.11 n20	5720 <sup>Note*</sup>	MCS8	3.32	3.53
		5745		11.88	10.56
		5785		12.84	11.42
		5825		12.77	11.53
	802.11 n40	5710 <sup>Note*</sup>	MCS8	0.42	0.74
		5755		11.72	10.87
		5795		12.79	11.42
	802.11 ac80	5690 <sup>Note*</sup>	MCS8	-4.08	-4.39
		5775		9.03	8.79

Note\*: Cross band frequency.

## Standalone SAR test exclusion considerations

### Antennas Location:



### Antenna Distance To Edge

Antenna Distance To Edge(mm)					
Antenna	Back	Left	Right	Top	Bottom
WLAN AUX&BT	12	< 5	265	159	20
WLAN Main	12	268	< 5	155	20

### Standalone SAR test exclusion considerations details:

Mode	Frequency (MHz)	Pavg (dBm)	Pavg (mW)	Test Exclusion Distance (mm)
WLAN 5.2G	5240	13.3	21.38	16.4
WLAN 5.3G	5320	13.5	22.39	17.3
WLAN 5.6G	5700	13	19.95	15.9
WLAN 5.8G	5785	13.1	20.42	16.4
WLAN 2.4G	2462	20.3	107.15	51.2
Bluetooth	2480	12.0	15.85	8.3

**SAR test exclusion for the EUT edge considerations Result**

Mode	Back	Left	Right	Top	Bottom
WLAN 5.2G Chain 0(Main)	<b>Required</b>	Exclusion	<b>Required</b>	Exclusion	Exclusion
WLAN 5.2G Chain 1(AUX)	<b>Required</b>	<b>Required</b>	Exclusion	Exclusion	Exclusion
WLAN 5.3G Chain 0(Main)	<b>Required</b>	Exclusion	<b>Required</b>	Exclusion	Exclusion
WLAN 5.3G Chain 1(AUX)	<b>Required</b>	<b>Required</b>	Exclusion	Exclusion	Exclusion
WLAN 5.6G Chain 0(Main)	<b>Required</b>	Exclusion	<b>Required</b>	Exclusion	Exclusion
WLAN 5.6G Chain 1(AUX)	<b>Required</b>	<b>Required</b>	Exclusion	Exclusion	Exclusion
WLAN 5.8G Chain 0(Main)	<b>Required</b>	Exclusion	<b>Required</b>	Exclusion	Exclusion
WLAN 5.8G Chain 1(AUX)	<b>Required</b>	<b>Required</b>	Exclusion	Exclusion	Exclusion
WLAN 2.4G Chain 0(Main)	<b>Required</b>	Exclusion	<b>Required</b>	Exclusion	<b>Required</b>
WLAN 2.4G Chain 1(AUX)	<b>Required</b>	<b>Required</b>	Exclusion	Exclusion	<b>Required</b>
Bluetooth Chain 1(AUX)	Exclusion	<b>Required</b>	Exclusion	Exclusion	Exclusion

**Note:**

Required: The distance is less than **Test Exclusion Distance**, the SAR test is required.

Exclusion: The distance is large than **Test Exclusion Distance**, SAR test is not required.

**SAR test exclusion for the EUT edge considerations detail:****Distance < 50mm (To Edges)**

The 1-g and 10-g SAR test exclusion thresholds for 100 MHz to 6 GHz at test separation distances  $\leq 50$  mm are determined by:

$[(\text{max. power of channel, including tune-up tolerance, mW}) / (\text{min. test separation distance, mm})] \cdot$

$[\sqrt{f(\text{GHz})}] \leq 3.0$  for 1-g SAR and  $\leq 7.5$  for 10-g extremity SAR, where

1.  $f(\text{GHz})$  is the RF channel transmit frequency in GHz.

2. Power and distance are rounded to the nearest mW and mm before calculation.

3. The result is rounded to one decimal place for comparison.

4. When the minimum test separation distance is  $< 5$  mm, a distance of 5 mm is applied to determine SAR test Exclusion.

5. The Time based average Power is used for calculation

**Distance > 50mm (To Edges)**

At 100 MHz to 6 GHz and for *test separation distances*  $> 50$  mm, the SAR test exclusion threshold is determined according to the following:

a)  $[\text{Power allowed at numeric threshold for 50 mm in step 1}) + (\text{test separation distance} - 50 \text{ mm}) \cdot (f(\text{MHz})/150)]$   
mW, at 100 MHz to 1500 MHz

b)  $[\text{Power allowed at numeric threshold for 50 mm in step 1}) + (\text{test separation distance} - 50 \text{ mm}) \cdot 10]$  mW at  $> 1500$  MHz and  $\leq 6$  GHz.

## SAR MEASUREMENT RESULTS

This page summarizes the results of the performed dosimetric evaluation.

### SAR Test Data

#### Environmental Conditions

<b>Temperature:</b>	22.5-23.1 °C
<b>Relative Humidity:</b>	47 %
<b>ATM Pressure:</b>	101.4 kPa
<b>Test Date:</b>	2019/11/28

Testing was performed by Gaochao Gong, Sam Liang, William Ye.

### WLAN 5.2G(5150~5250MHz):

#### Antenna Chain 0(Main):

EUT Position	Frequency (MHz)	Test Mode	Max. Meas. Power (dBm)	Max. Rated Power (dBm)	1 g SAR (W/kg), Limit=1.6W/kg			
					Scaled Factor	Meas. SAR	Scaled SAR	Plot
Body Back (0mm)	5180	802.11a	/	/	/	/	/	/
	5200	802.11a	13.19	13.3	1.026	0.054	0.06	1#
	5240	802.11a	/	/	/	/	/	/
Body Right (0mm)	5180	802.11a	/	/	/	/	/	/
	5200	802.11a	13.19	13.3	1.026	0.090	<b>0.09</b>	<b>2#</b>
	5240	802.11a	/	/	/	/	/	/

#### Antenna Chain 1(AUX):

EUT Position	Frequency (MHz)	Test Mode	Max. Meas. Power (dBm)	Max. Rated Power (dBm)	1 g SAR (W/kg), Limit=1.6W/kg			
					Scaled Factor	Meas. SAR	Scaled SAR	Plot
Body Back (0mm)	5180	802.11a	/	/	/	/	/	/
	5200	802.11a	13.17	13.3	1.03	0.045	0.05	3#
	5240	802.11a	/	/	/	/	/	/
Body Left (0mm)	5180	802.11a	/	/	/	/	/	/
	5200	802.11a	13.17	13.3	1.03	0.761	<b>0.78</b>	<b>4#</b>
	5240	802.11a	/	/	/	/	/	/

**WLAN 5.3G(5250~5350MHz):****Antenna Chain 0(Main):**

EUT Position	Frequency (MHz)	Test Mode	Max. Meas. Power (dBm)	Max. Rated Power (dBm)	1 g SAR (W/kg), Limit=1.6W/kg			
					Scaled Factor	Meas. SAR	Scaled SAR	Plot
Body Back (0mm)	5260	802.11a	/	/	/	/	/	/
	5280	802.11a	13.35	13.5	1.035	0.056	0.06	5#
	5320	802.11a	/	/	/	/	/	/
Body Right (0mm)	5260	802.11a	/	/	/	/	/	/
	5280	802.11a	13.35	13.5	1.035	0.079	<b>0.08</b>	<b>6#</b>
	5320	802.11a	/	/	/	/	/	/

**Antenna Chain 1(AUX):**

EUT Position	Frequency (MHz)	Test Mode	Max. Meas. Power (dBm)	Max. Rated Power (dBm)	1 g SAR (W/kg), Limit=1.6W/kg			
					Scaled Factor	Meas. SAR	Scaled SAR	Plot
Body Back (0mm)	5260	802.11a	/	/	/	/	/	/
	5280	802.11a	13.46	13.5	1.009	0.036	0.04	7#
	5320	802.11a	/	/	/	/	/	/
Body Left (0mm)	5260	802.11a	/	/	/	/	/	/
	5280	802.11a	13.46	13.5	1.009	0.601	<b>0.61</b>	<b>8#</b>
	5320	802.11a	/	/	/	/	/	/

**WLAN 5.6G(5470~5725MHz):****Antenna Chain 0(Main):**

EUT Position	Frequency (MHz)	Test Mode	Max. Meas. Power (dBm)	Max. Rated Power (dBm)	1 g SAR (W/kg), Limit=1.6W/kg			
					Scaled Factor	Meas. SAR	Scaled SAR	Plot
Body Back (0mm)	5500	802.11a	/	/	/	/	/	/
	5600	802.11a	12.95	13	1.012	0.064	0.06	9#
	5700	802.11a	/	/	/	/	/	/
Body Right (0mm)	5500	802.11a	/	/	/	/	/	/
	5600	802.11a	12.95	13	1.012	0.162	<b>0.16</b>	<b>10#</b>
	5700	802.11a	/	/	/	/	/	/

**Antenna Chain 1(AUX):**

EUT Position	Frequency (MHz)	Test Mode	Max. Meas. Power (dBm)	Max. Rated Power (dBm)	1 g SAR (W/kg), Limit=1.6W/kg			
					Scaled Factor	Meas. SAR	Scaled SAR	Plot
Body Back (0mm)	5500	802.11a	/	/	/	/	/	/
	5600	802.11a	12.89	13	1.026	0.049	0.05	11#
	5700	802.11a	/	/	/	/	/	/
Body Left (0mm)	5500	802.11a	/	/	/	/	/	/
	5600	802.11a	12.89	13	1.026	0.651	<b>0.67</b>	<b>12#</b>
	5700	802.11a	/	/	/	/	/	/

**WLAN 5.8G(5725~5850MHz):****Antenna Chain 0(Main):**

EUT Position	Frequency (MHz)	Test Mode	Max. Meas. Power (dBm)	Max. Rated Power (dBm)	1 g SAR (W/kg), Limit=1.6W/kg			
					Scaled Factor	Meas. SAR	Scaled SAR	Plot
Body Back (0mm)	5745	802.11a	/	/	/	/	/	/
	5785	802.11a	13.07	13.1	1.007	0.075	0.08	13#
	5825	802.11a	/	/	/	/	/	/
Body Right (0mm)	5745	802.11a	/	/	/	/	/	/
	5785	802.11a	13.07	13.1	1.007	0.089	<b>0.09</b>	<b>14#</b>
	5825	802.11a	/	/	/	/	/	/

**Antenna Chain 1(AUX):**

EUT Position	Frequency (MHz)	Test Mode	Max. Meas. Power (dBm)	Max. Rated Power (dBm)	1 g SAR (W/kg), Limit=1.6W/kg			
					Scaled Factor	Meas. SAR	Scaled SAR	Plot
Body Back (0mm)	5745	802.11a	/	/	/	/	/	/
	5785	802.11a	11.85	12	1.035	0.158	0.16	15#
	5825	802.11a	/	/	/	/	/	/
Body Left (0mm)	5745	802.11a	11.88	12	1.028	1.12	1.15	16#
	5785	802.11a	11.85	12	1.035	1.15	<b>1.19</b>	<b>17#</b>
	5825	802.11a	11.89	12	1.026	0.877	0.90	18#

**Note:**

1. When the SAR value is less than half of the limit, testing for other channels are optional.
2. When SAR or MPE is not measured at the maximum power level allowed for production units, the results must be scaled to the maximum tune-up tolerance limit according to the power applied to the individual channels tested to determine compliance.



**WLAN 2.4G:****Antenna Chain 0(Main):**

EUT Position	Frequency (MHz)	Test Mode	Max. Meas. Power (dBm)	Max. Rated Power (dBm)	1 g SAR (W/kg), Limit=1.6W/kg			
					Scaled Factor	Meas. SAR	Scaled SAR	Plot
Body Back (0mm)	2412	802.11b	/	/	/	/	/	/
	2442	802.11b	20.03	20.3	1.064	0.062	0.07	19#
	2462	802.11b	/	/	/	/	/	/
Body Right (0mm)	2412	802.11b	/	/	/	/	/	/
	2442	802.11b	20.03	20.3	1.064	0.452	<b>0.48</b>	<b>20#</b>
	2462	802.11b	/	/	/	/	/	/
Body Bottom (0mm)	2412	802.11b	/	/	/	/	/	/
	2442	802.11b	20.03	20.3	1.064	0.056	0.06	21#
	2462	802.11b	/	/	/	/	/	/

**Antenna Chain 1(AUX):**

EUT Position	Frequency (MHz)	Test Mode	Max. Meas. Power (dBm)	Max. Rated Power (dBm)	1 g SAR (W/kg), Limit=1.6W/kg			
					Scaled Factor	Meas. SAR	Scaled SAR	Plot
Body Back (0mm)	2412	802.11b	/	/	/	/	/	/
	2442	802.11b	20.11	20.3	1.026	0.153	0.16	22#
	2462	802.11b	/	/	/	/	/	/
Body Left (0mm)	2412	802.11b	20.13	20.3	1.04	1.13	<b>1.18</b>	<b>23#</b>
	2442	802.11b	20.11	20.3	1.045	1.09	1.14	24#
	2462	802.11b	20.23	20.3	1.016	1.11	1.13	25#
Body Bottom (0mm)	2412	802.11b	/	/	/	/	/	/
	2442	802.11b	20.11	20.3	1.026	0.181	0.19	26#
	2462	802.11b	/	/	/	/	/	/

**Note:**

1. When the SAR value is less than half of the limit, testing for other channels are optional.
2. When SAR or MPE is not measured at the maximum power level allowed for production units, the results must be scaled to the maximum tune-up tolerance limit according to the power applied to the individual channels tested to determine compliance.
3. KDB 248227 D01-SAR measurement is not required for 2.4 GHz OFDM(801.11g/n) when the highest reported SAR for DSSS(802.11b) is  $\leq 1.2$  W/kg, and the output power for DSSS is not less than that for OFDM.

**Bluetooth:****Antenna Chain 1(AUX):**

EUT Position	Frequency (MHz)	Test Mode	Max. Meas. Power (dBm)	Max. Rated Power (dBm)	1 g SAR (W/kg), Limit=1.6W/kg			
					Scaled Factor	Meas. SAR	Scaled SAR	Plot
Body Left (0mm)	2402	GFSK	/	/	/	/	/	/
	2441	GFSK	11.88	12	1.028	0.084	<b>0.09</b>	<b>27#</b>
	2480	GFSK	/	/	/	/	/	/

**Note:**

1. When the SAR value is less than half of the limit, testing for other channels are optional.
2. When SAR or MPE is not measured at the maximum power level allowed for production units, the results must be scaled to the maximum tune-up tolerance limit according to the power applied to the individual channels tested to determine compliance.

## SAR Measurement Variability

In accordance with published RF Exposure KDB procedure 865664 D01 SAR measurement 100 MHz to 6 GHz v01. These additional measurements are repeated after the completion of all measurements requiring the same head or body tissue-equivalent medium in a frequency band. The test device should be returned to ambient conditions (normal room temperature) with the battery fully charged before it is re-mounted on the device holder for the repeated measurement(s) to minimize any unexpected variations in the repeated results

- 1) Repeated measurement is not required when the original highest measured SAR is  $< 0.80$  W/kg; steps 2) through 4) do not apply.
- 2) When the original highest measured SAR is  $\geq 0.80$  W/kg, repeat that measurement once.
- 3) Perform a second repeated measurement only if the ratio of largest to smallest SAR for the original and first repeated measurements is  $> 1.20$  or when the original or repeated measurement is  $\geq 1.45$  W/kg ( $\sim 10\%$  from the 1-g SAR limit).
- 4) Perform a third repeated measurement only if the original, first or second repeated measurement is  $\geq 1.5$  W/kg and the ratio of largest to smallest SAR for the original, first and second repeated measurements is  $> 1.20$ .

*Note: The same procedures should be adapted for measurements according to extremity and occupational exposure limits by applying a factor of 2.5 for extremity exposure and a factor of 5 for occupational exposure to the corresponding SAR thresholds.*

### The Highest Measured SAR Configuration in Each Frequency Band

#### 1g Body SAR

SAR probe calibration point	Frequency Band	Freq.(MHz)	EUT Position	Meas. SAR (W/kg)		Largest to Smallest SAR Ratio
				Original	Repeated	
2450MHz (2400~2550MHz)	WLAN 2.4G AUX Antenna	2412	Body Left	1.13	1.11	1.02
5800MHz (5700~5910MHz)	WLAN 5.8G AUX Antenna	5785	Body Left	1.15	1.12	<b>1.03</b>

**Note:**

1. Second Repeated Measurement is not required since the ratio of the largest to smallest SAR for the original and first repeated measurement is not  $> 1.20$ .
2. The measured SAR results **do not** have to be scaled to the maximum tune-up tolerance to determine if repeated measurements are required.
3. SAR measurement variability must be assessed for each frequency band, which is determined by the **SAR probe calibration point and tissue-equivalent medium** used for the device measurements.

## SAR SIMULTANEOUS TRANSMISSION DESCRIPTION

### Simultaneous Transmission:

Description of Simultaneous Transmit Capabilities	
Transmitter Combination	Simultaneous?
WLAN 5G Chain 0(Main) + WLAN 5G Chain 1(AUX)	√
WLAN 5G Chain 0(Main) + WLAN 2.4G Chain 1(AUX)	√
WLAN 5G Chain 0(Main) + Bluetooth	√
WLAN 5G Chain 1(AUX) + Bluetooth	×
WLAN 2.4G Chain 0(Main) + WLAN 5G Chain 1(AUX)	√
WLAN 2.4G Chain 0(Main) + WLAN 2.4G Chain 1(AUX)	√
WLAN 2.4G Chain 0(Main) + Bluetooth	√
WLAN 2.4G Chain 1(AUX) + Bluetooth	×

### Simultaneous SAR test exclusion considerations:

Mode (SAR1+SAR2)	Position	Reported SAR (W/kg)		$\Sigma$ SAR < 1.6W/kg
		SAR1	SAR2	
WLAN 5G Chain 0(Main) + WLAN 5G Chain 1(AUX)	Body Back	0.08	0.22	<b>0.30</b>
	Body Left	NA	1.19	NA
	Body Right	0.16	NA	NA
	Body Bottom	NA	NA	NA
WLAN 2.4G Chain 0(Main) + WLAN 2.4G Chain 1(AUX)	Body Back	0.07	0.16	0.23
	Body Left	NA	1.18	NA
	Body Right	0.48	NA	NA
	Body Bottom	0.06	0.19	0.25
WLAN 5G Chain 0(Main) + WLAN 2.4G Chain 1(AUX)	Body Back	0.08	0.16	0.24
	Body Left	NA	1.18	NA
	Body Right	0.16	NA	NA
	Body Bottom	NA	0.19	NA
WLAN 2.4G Chain 0(Main) + WLAN 5G Chain 1(AUX)	Body Back	0.07	0.22	0.29
	Body Left	NA	1.19	NA
	Body Right	0.48	NA	NA
	Body Bottom	0.06	NA	NA
WLAN 5G Chain 0(Main) + Bluetooth	Body Back	0.08	NA	NA
	Body Left	NA	0.09	NA
	Body Right	0.16	NA	NA
	Body Bottom	NA	NA	NA
WLAN 2.4G Chain 0(Main) + Bluetooth	Body Back	0.07	NA	NA
	Body Left	NA	0.09	NA
	Body Right	0.48	NA	NA
	Body Bottom	0.06	NA	NA

**Conclusion:**

Sum of SAR:  $\Sigma \text{SAR} < 1.6 \text{ W/kg}$  and simultaneous transmission SAR with Volume Scans is **not required**.

## SAR Plots

---

**Please Refer to the Attachment.**

## APPENDIX A MEASUREMENT UNCERTAINTY

The uncertainty budget has been determined for the measurement system and is given in the following Table.

Measurement uncertainty evaluation for IEEE1528-2013 SAR test

Source of uncertainty	Tolerance/ uncertainty ± %	Probability distribution	Divisor	ci (1 g)	ci (10 g)	Standard uncertainty ± %, (1 g)	Standard uncertainty ± %, (10 g)
<b>Measurement system</b>							
Probe calibration	6.55	N	1	1	1	6.6	6.6
Axial Isotropy	4.7	R	$\sqrt{3}$	1	1	2.7	2.7
Hemispherical Isotropy	9.6	R	$\sqrt{3}$	0	0	0.0	0.0
Boundary effect	1.0	R	$\sqrt{3}$	1	1	0.6	0.6
Linearity	4.7	R	$\sqrt{3}$	1	1	2.7	2.7
Detection limits	1.0	R	$\sqrt{3}$	1	1	0.6	0.6
Readout electronics	0.3	N	1	1	1	0.3	0.3
Response time	0.0	R	$\sqrt{3}$	1	1	0.0	0.0
Integration time	0.0	R	$\sqrt{3}$	1	1	0.0	0.0
RF ambient conditions – noise	1.0	R	$\sqrt{3}$	1	1	0.6	0.6
RF ambient conditions–reflections	1.0	R	$\sqrt{3}$	1	1	0.6	0.6
Probe positioner mech. Restrictions	0.8	R	$\sqrt{3}$	1	1	0.5	0.5
Probe positioning with respect to phantom shell	6.7	R	$\sqrt{3}$	1	1	3.9	3.9
Post-processing	2.0	R	$\sqrt{3}$	1	1	1.2	1.2
<b>Test sample related</b>							
Test sample positioning	2.8	N	1	1	1	2.8	2.8
Device holder uncertainty	6.3	N	1	1	1	6.3	6.3
Drift of output power	5.0	R	$\sqrt{3}$	1	1	2.9	2.9
<b>Phantom and set-up</b>							
Phantom uncertainty (shape and thickness tolerances)	4.0	R	$\sqrt{3}$	1	1	2.3	2.3
Liquid conductivity target)	5.0	R	$\sqrt{3}$	0.64	0.43	1.8	1.2
Liquid conductivity meas.)	2.5	N	1	0.64	0.43	1.6	1.1
Liquid permittivity target)	5.0	R	$\sqrt{3}$	0.6	0.49	1.7	1.4
Liquid permittivity meas.)	2.5	N	1	0.6	0.49	1.5	1.2
Combined standard uncertainty		RSS				12.2	12.0
Expanded uncertainty 95 % confidence interval)						24.3	23.9

## Measurement uncertainty evaluation for IEC62209-2 SAR test

Source of uncertainty	Tolerance/ uncertainty ± %	Probability distribution	Divisor	ci (1 g)	ci (10 g)	Standard uncertainty ± %, (1 g)	Standard uncertainty ± %, (10 g)
<b>Measurement system</b>							
Probe calibration	6.55	N	1	1	1	6.6	6.6
Axial Isotropy	4.7	R	$\sqrt{3}$	1	1	2.7	2.7
Hemispherical Isotropy	9.6	R	$\sqrt{3}$	0	0	0.0	0.0
Linearity	4.7	R	$\sqrt{3}$	1	1	2.7	2.7
Modulation Response	0.0	R	$\sqrt{3}$	1	1	0.0	0.0
Detection limits	1.0	R	$\sqrt{3}$	1	1	0.6	0.6
Boundary effect	1.0	R	$\sqrt{3}$	1	1	0.6	0.6
Readout electronics	0.3	N	1	1	1	0.3	0.3
Response time	0.0	R	$\sqrt{3}$	1	1	0.0	0.0
Integration time	0.0	R	$\sqrt{3}$	1	1	0.0	0.0
RF ambient conditions – noise	1.0	R	$\sqrt{3}$	1	1	0.6	0.6
RF ambient conditions–reflections	1.0	R	$\sqrt{3}$	1	1	0.6	0.6
Probe positioner mech. Restrictions	0.8	R	$\sqrt{3}$	1	1	0.5	0.5
Probe positioning with respect to phantom shell	6.7	R	$\sqrt{3}$	1	1	3.9	3.9
Post-processing	2.0	R	$\sqrt{3}$	1	1	1.2	1.2
<b>Test sample related</b>							
Device holder Uncertainty	6.3	N	1	1	1	6.3	6.3
Test sample positioning	2.8	N	1	1	1	2.8	2.8
Power scaling	4.5	R	$\sqrt{3}$	1	1	2.6	2.6
Drift of output power	5.0	R	$\sqrt{3}$	1	1	2.9	2.9
<b>Phantom and set-up</b>							
Phantom uncertainty (shape and thickness tolerances)	4.0	R	$\sqrt{3}$	1	1	2.3	2.3
Algorithm for correcting SAR for deviations in permittivity and conductivity	1.9	N	1	1	0.84	1.1	0.9
Liquid conductivity (meas.)	2.5	N	1	0.64	0.43	1.6	1.1
Liquid permittivity (meas.)	2.5	N	1	0.6	0.49	1.5	1.2
Temp. unc. - Conductivity	1.7	R	$\sqrt{3}$	0.78	0.71	0.8	0.7
Temp. unc. - Permittivity	0.3	R	$\sqrt{3}$	0.23	0.26	0.0	0.0
Combined standard uncertainty		RSS				12.2	12.1
Expanded uncertainty 95 % confidence interval)						24.5	24.2



## APPENDIX B EUT TEST POSITION PHOTOS

**Please Refer to the Attachment.**

## APPENDIX C CALIBRATION CERTIFICATES

---

**Please Refer to the Attachment.**

### Declarations

1. BACL is not responsible for the authenticity of any test data provided by the applicant. Data included from the applicant that may affect test results are marked with a triangle symbol “Δ”. Customer model name, addresses, names, trademarks etc. are not considered data.
2. Unless otherwise stated the results shown in this test report refer only to the sample(s) tested.
3. Otherwise required by the applicant or Product Regulations, Decision Rule in this report did not consider the uncertainty.
4. The extended uncertainty given in this report is obtained by combining the standard uncertainty times the coverage factor K with the 95% confidence interval.
5. This [report](#) cannot be reproduced except in full, without prior written approval of the Company.
6. This report is valid only with a valid digital signature. The digital signature may be available only under the Adobe software above version 7.0.
7. This report must not be used by the customer to claim product certification, approval, or endorsement by A2LA, or any agency of the U.S. Government.
8. This report may contain data that are not covered by the accreditation scope and shall be marked with an asterisk “★” .

\*\*\*\*\* **END OF REPORT** \*\*\*\*\*