

1. Antenna Description:

| | |
|-----------------|----------------------------------|
| Antenna type | PCB antenna |
| Model | K92 |
| Frequency range | 2400-2500MHz |
| Manufacturer | Shenzhen Yufei Display Co., Ltd. |
| ANT Peak Gain | 0.97 dBi |

2. Antenna Photo:

Length: 13.74mm
Width: 3.57mm



3. Test Equipment & Conditions

3.1 Test instrument

VSWR is tested using Agilent E5071B connected to a hand mechanism, and the status is free space.

3.2 Test environment and methods

Dark room specifications: ETS-743

TD-SCDMA test equipment: StarPoint SP6010/Agilent 8960

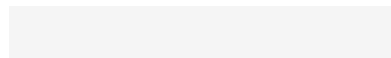
LTE-TDD/FDD-SCDMA test equipment: StarPoint SP8011/CMW500

WCDMA/GSM/CDMA test equipment: Agilent 8960

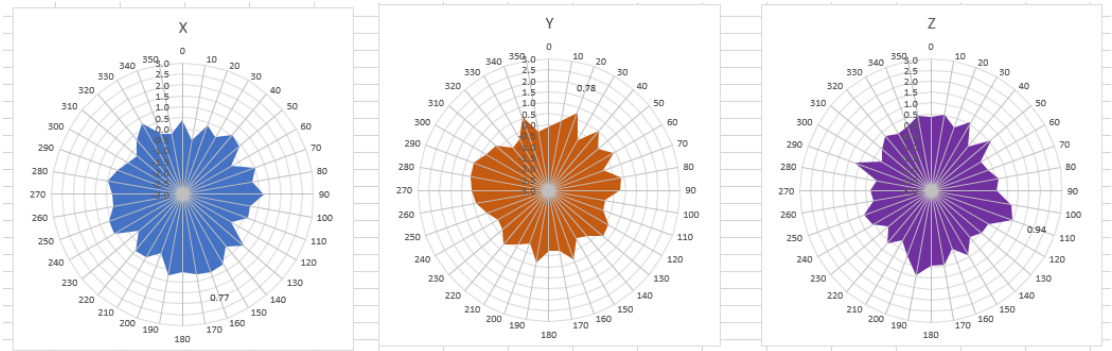
Passive efficiency testing equipment: Agilent Technologies E5071B



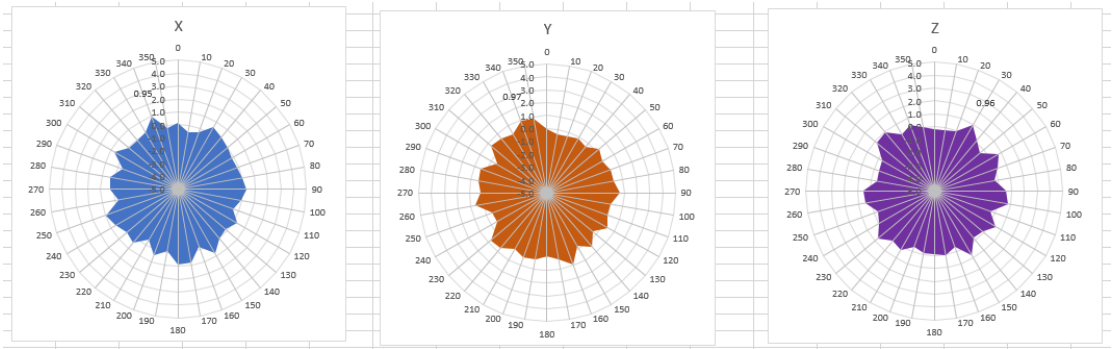
4 . Antenna Radiation Pattern



2400MHz



2450MHz



2500MHz

