

Antenna test Report

For

Parking lotRoject W900

Version:

Customer	Boluke	Project.	W900
Band.	BT	Color.	
Issued by	WWL	Checked by	
Confirmed by		Date.	2024.11.20

一. T.It isAnd Instrumentation and Item(Test equipment and projects)

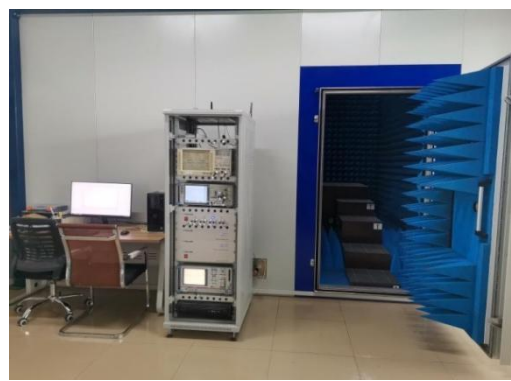
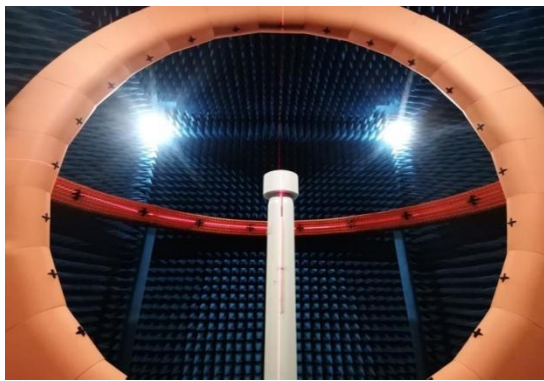
This test report belongs to ShenZhen NQI network communication ltd. and related clients to file,please keeping it propely,without our company and related clients allowed,anybody has no rights to reval it to public.



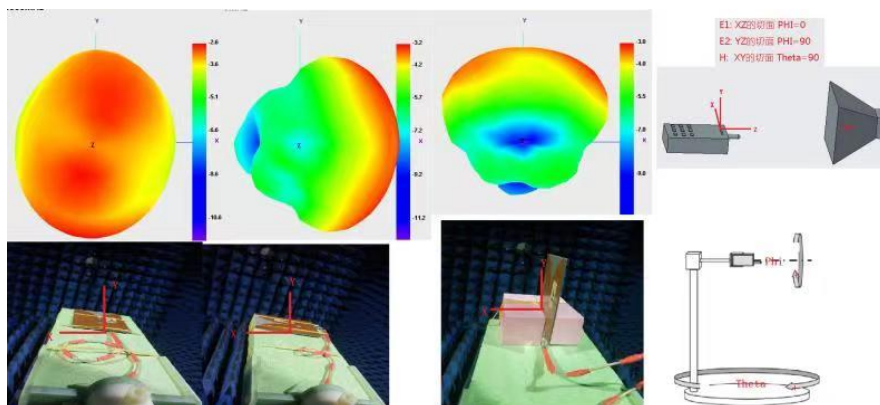
Category (Class)	Test items(Test item.)	Equipment(AndEquipment)
1. Small size Parameter	1. Return loss (RL) Two. Stationary Wave Ratio (VSWR) 3. Smith chart (Smith chart)	Network Score (VNA): Agilent E5071B R&S. ZVB8. Protect A333.
Two. Coupling test(CentigradeOupli ng testing)	1. Transmission power (MAX Power) Two. Receiving sensitivity (MIN Sens)	.1.2 G / 3 GTester. : Agilent 8960 Two.The coupling box: TESCOM TC-5060A. Three. 3D.Chamber. : ETS 3D.Chamber. (5UnknownThreeX3)
3. 3D passive test(Passive Test)	1. Efficiency (AndFfecency) Two. Gain (Gain) 3. Radiation direction map (Radiation pattern)	1. 3D.Chamber. :TEM 24 3D.Cham. Ber(FiveUnknown5Unknow n5) ETS. 3D.Chamber. (5UnknownThreeX3) 2. Network Score (VNA): Agilent E5071B R&S. ZVB8.
4.3D active test (Active Test)	1. 3D power (TRP) Two. 3D Sensitivity (TIS) 3.Throughput rate (T.Hroughput Rate)	1. 3D.Chamber. :TEM 24 3D.Chamber (5 Unknown5Unknown5) ETS. 3D.Chamber. (5UnknownThreeX3) 2.2G/3GTester.: Agilent 8960 3.4 GTester. : MT8820C/CMW500. Four. WIFI/BT/NB-iotTester. : CMW500 5. 5GenerationTester. :SP9500-CTS. 6. Head:HEAD-P10 (FACE-P10)



深圳市国质信网络通讯有限公司
ShenZhen NQI network communication ltd



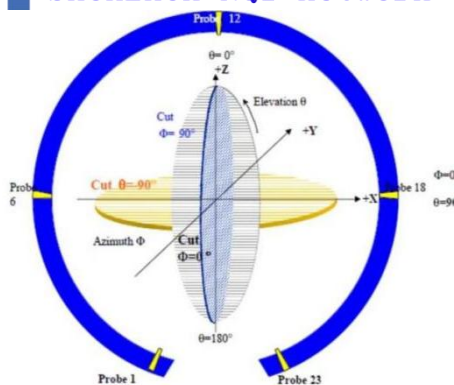
二. Chamber. Coordinate Axis(Darkroom coordinates)



This test report belongs to ShenZhen NQI network communication ltd. and related clients to file, please keeping it propely, without our company and related clients allowed, anybody has no rights to revel it to public.



深圳市国质信网络通讯有限公司
ShenZhen NQI network communication ltd



三. Definitions(Definition)

VSWR.:Voltage Standing Wave Rate

RL: Return loss

TRP: total radiated power

TIS: total isotropic sensitivity

四. Cell-Phone Photo and Dealing Method.(Mobile phone pictures and environmental processing)



五. Matching Circuit Description(Matching description)

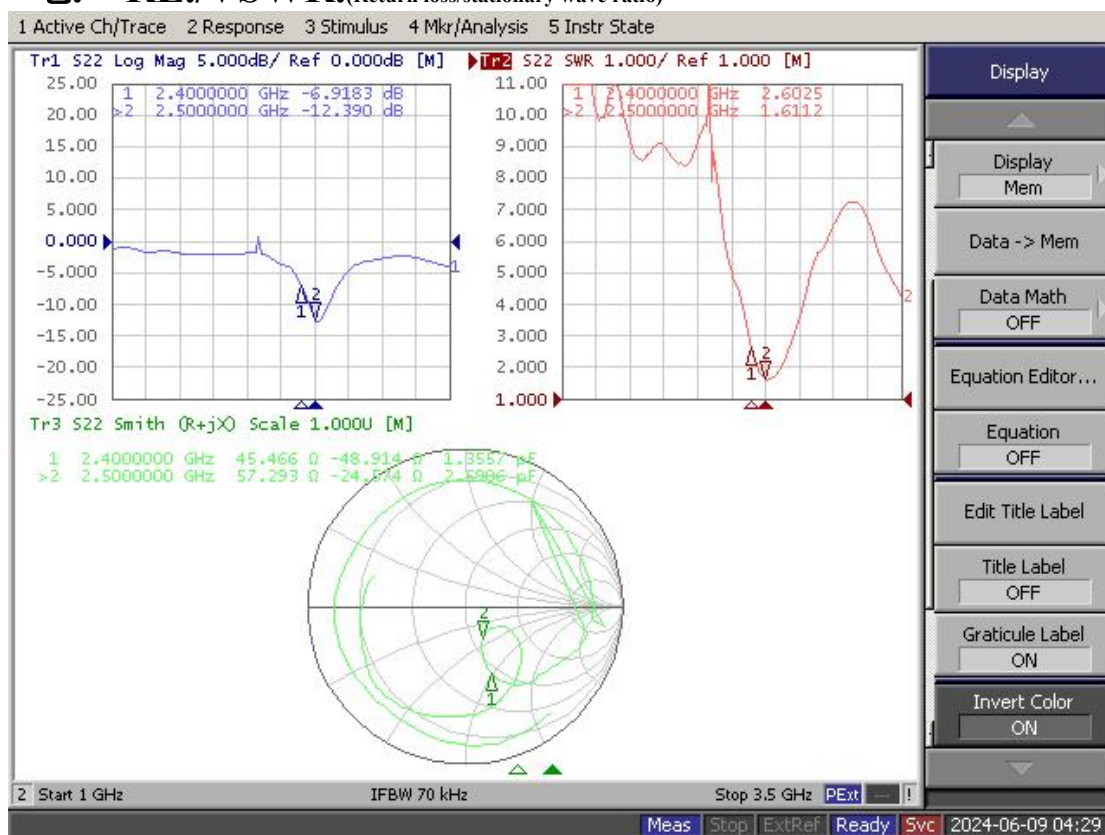
This test report belongs to ShenZhen NQI network communication ltd. and related clients to file, please keeping it properly, without our company and related clients allowed, anybody has no rights to reveal it to public.



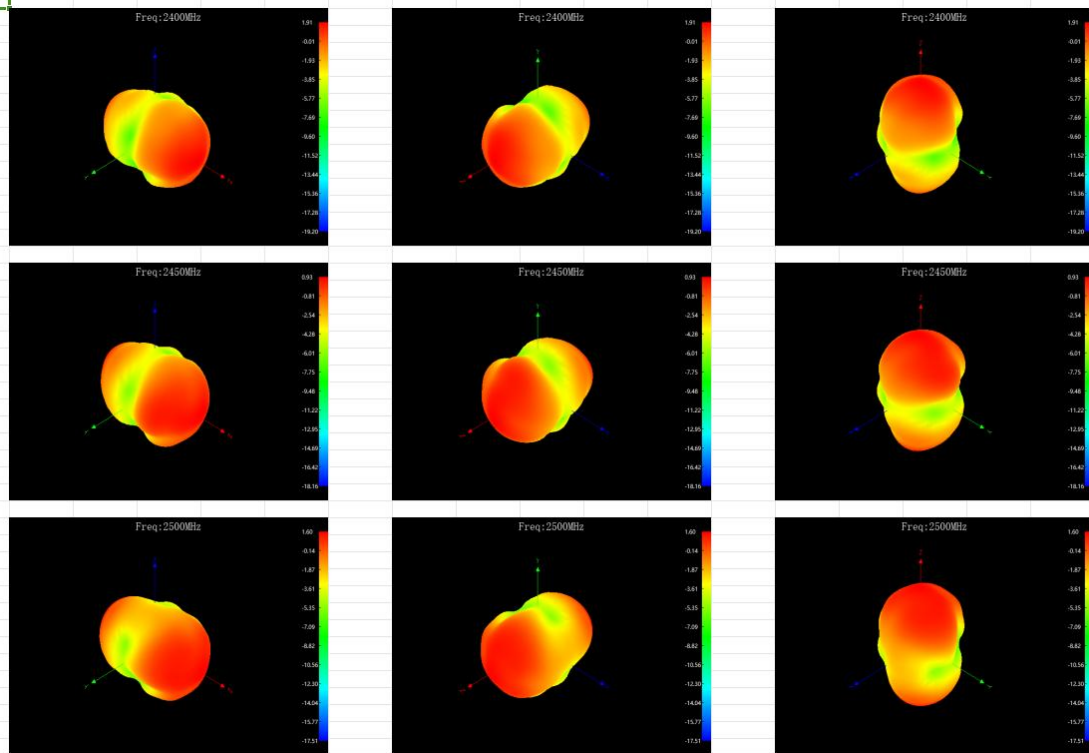
六. Passive test(A passive test)

Freq (MHz)	Effi (%)	Gain (DBi)
2400	47.53	1.91
2410	43.95	1.6
2420	44.06	1.46
2430	42.36	0.94
2440	44.26	0.57
2450	46.13	0.93
2460	50.47	1.74
2470	52.12	2.19
2480	50.47	2.13
2490	52.24	1.72
2500	53.95	1.6

七. RL./VSWR.(Return loss/stationary wave ratio)



This test report belongs to ShenZhen NQI network communication ltd. and related clients to file, please keeping it properly, without our company and related clients allowed, anybody has no rights to reveal it to public.



八. TRP & TIS

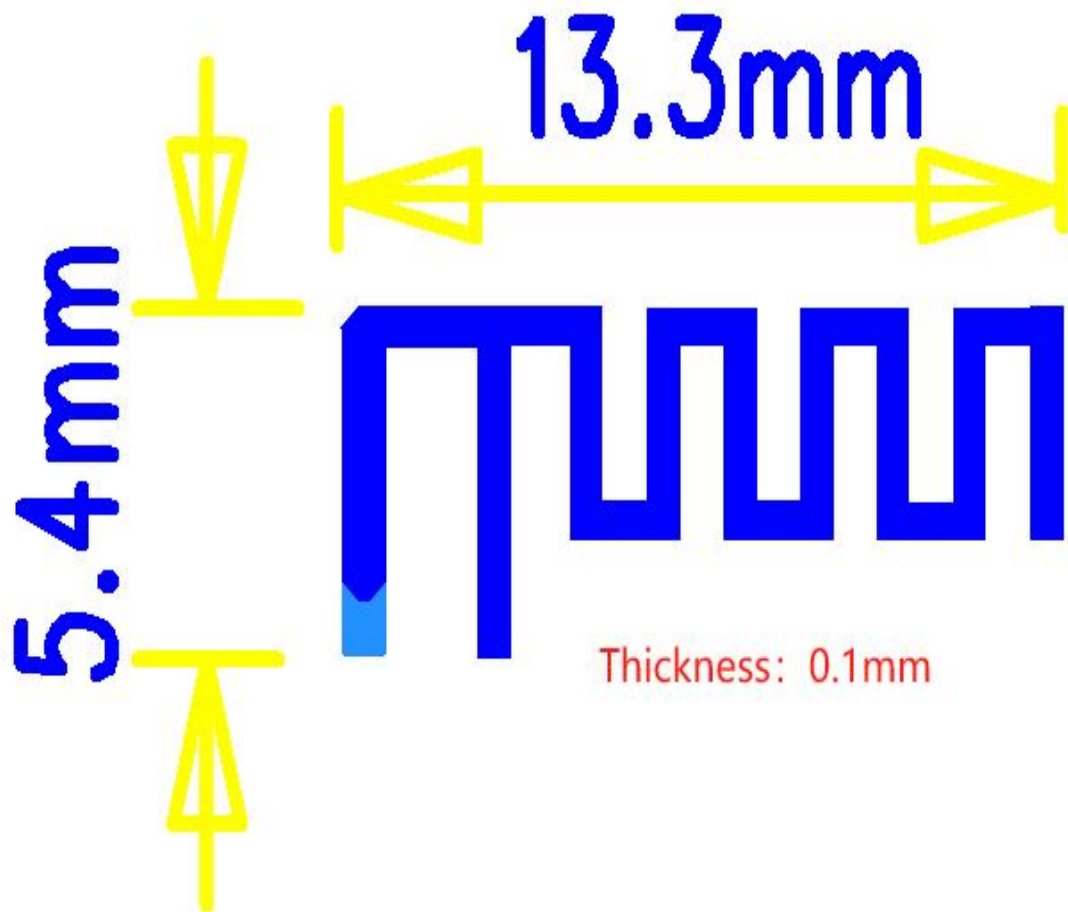
NQLANT TRP&TIS parameter Summary of W900				
Free space	Test	Bluetooth TRP		
	Result	0	39	78
	TRP (dBm)	7.55	7.62	8.52
	TIS (dBm)	-91.75	-91.87	-92.92
NQLANT TRP&TIS parameter Summary of W900.				
Second-generation head ear mold	Test	Bluetooth TRP		
	Result	0	39	78
	TRP (dBm)	7.28	6.63	7.35
	TIS (dBm)	-92.01	-91.41	-92.98

This test report belongs to ShenZhen NQI network communication ltd. and related clients to file, please keep it properly, without our company and related clients allowed, anybody has no rights to reveal it to public.



深圳市国质信网络通讯有限公司
ShenZhen NQI network communication ltd

Product structure diagram:



This test report belongs to ShenZhen NQI network communication ltd. and related clients to file, please keeping it properly, without our company and related clients allowed, anybody has no rights to reveal it to public.

Antenna supplier:
Shenzhen Boluke Electronic Technology Co., Ltd.

**Address: 4A, Building F3, Tianyou Maker Industrial Park, No.
2 Lixin Road, Fuyong Street, Bao'an District, Shenzhen**