




Shenzhen Huatongwei International Inspection Co., Ltd.
 Huatongwei 101, No.006, Keji south 12th Road, High-tech zone community, Yuehai Street,
 Nanshan District, Shenzhen, Guangdong, China
 Phone:86-755-26715499 E-mail: cs@szhtw.com.cn Website:http://www.szhtw.com.cn

TEST REPORT

Report No. : **CHEW23090009** **Report Verification:** 


Project No...... : SHT2305025604EW

FCC ID..... : **OA8-TC368**

Applicant's name : **Quanzhou Chierda Electronic Telecom Co., Ltd.**

Address..... : No.8,Zian Road,Jiangnan High-tech Industrial Zone,Quanzhou,Fujian,China

Test item description : **TWO WAY RADIO**

Trade Mark : 

Model/Type reference..... : TC368

Listed Model(s) : TC368PLUS, TC368D, TC388

Standard : **FCC CFR Title 47 Part 95 Subpart E**

Date of receipt of test sample..... : Jun.13, 2023

Date of testing..... : Jun.20, 2023- Sep.07, 2023

Date of issue..... : Sep.07, 2023

Result..... : **PASS**

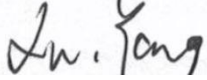
Compiled by
 (Position - Printed name -Signature): File administrator Caspar Chen



Supervised by
 (Position - Printed name -Signature): Project Engineer Caspar Chen



Approved by
 (Position - Printed name -Signature): RF Manager Xu Yang



Testing Laboratory Name : **Shenzhen Huatongwei International Inspection Co., Ltd.**

Address..... : 1/F, Bldg 3, Hongfa Hi-tech Industrial Park, Genyu Road, Tianliao, Gongming, Shenzhen, China

Shenzhen Huatongwei International Inspection Co., Ltd. All rights reserved.

This publication may be reproduced in whole or in part for non-commercial purposes as long as the Shenzhen Huatongwei International Inspection Co., Ltd. is acknowledged as copyright owner and source of the material. Shenzhen Huatongwei International Inspection Co., Ltd. takes no responsibility for and will not assume liability for damages resulting from the reader's interpretation of the reproduced material due to its placement and context.

The test report merely correspond to the test sample.

Contents

1.	<u>TEST STANDARDS AND REPORT VERSION</u>	3
1.1.	Test Standards	3
1.2.	Report version	3
2.	<u>TEST DESCRIPTION</u>	4
3.	<u>SUMMARY</u>	5
3.1.	Client Information	5
3.2.	Product Description	5
3.3.	Radio Specification Description	6
3.4.	Testing Laboratory Information	7
4.	<u>TEST CONFIGURATION</u>	8
4.1.	Test frequency list	8
4.2.	Test mode	9
4.3.	Support unit used in test configuration and system	9
4.4.	Testing environmental condition	10
4.5.	Measurement uncertainty	10
4.6.	Equipment Used during the Test	11
5.	<u>TEST CONDITIONS AND RESULTS</u>	13
5.1.	Carrier Output Power (ERP)	13
5.2.	99% Occupied Bandwidth & 26dB Bandwidth	15
5.3.	Emission Mask	16
5.4.	Modulation Limit	17
5.5.	Audio Frequency Response	18
5.6.	Audio Low Pass Filter Response	20
5.7.	Frequency stability VS Temperature	21
5.8.	Frequency stability VS Voltage	22
5.9.	Transmit Radiated Spurious Emission	23
6.	<u>TEST SETUP PHOTOS</u>	29
7.	<u>EXTERANAL AND INTERNAL PHOTOS</u>	30
7.1.	External Photos	30
7.2.	Internal Photos	33
8.	<u>APPENDIX REPORT</u>	34

1. TEST STANDARDS AND REPORT VERSION

1.1. Test Standards

The tests were performed according to following standards:

- [FCC CFR Title 47 Part 95 Subpart E](#): General Mobile Radio Service
- [FCC Rules Part 2](#): Frequency allocations and radio treaty matters; General rules and regulations
- [ANSI C63.26-2013](#): American National Standard for Compliance Testing of Transmitters Used in Licensed Radio Services
-

1.2. Report version

Revision No.	Date of issue	Description
N/A	2023-09-07	Original

2. TEST DESCRIPTION

Report clause	Test Items	Standard Requirement	Result
5.1	Carrier Output Power (ERP)	Part 95.1767 Part 2.1046	PASS
5.2	99% Occupied Bandwidth & 26dB bandwidth	Part 95.1773 Part 2.1049	PASS
5.3	Emission Mask	Part 95.1779 Part 2.1049	PASS
5.4	Modulation Limit	Part 95.1775 Part 2.1047	PASS
5.5	Audio Frequency Response	Part 95.1775 Part 2.1047	PASS
5.6	Audio Low Pass Filter Response	Part 95.1775 Part 2.1047	PASS
5.7	Frequency Stability V.S. Temperature	Part 95.1765 Part 2.1055	PASS
5.8	Frequency Stability V.S. Voltage	Part 95.1765 Part 2.1055	PASS
5.9	Transmit Radiated Spurious Emission	Part 95.1779 Part 2.1051	PASS

Note:


- The measurement uncertainty is not included in the test result.

3. SUMMARY

3.1. Client Information

Applicant:	Quanzhou Chierda Electronic Telecom Co., Ltd.
Address:	No.8,Zian Road,Jiangnan High-tech Industrial Zone,Quanzhou,Fujian,China
Manufacturer:	Quanzhou Chierda Electronic Telecom Co., Ltd.
Address:	No.8,Zian Road,Jiangnan High-tech Industrial Zone,Quanzhou,Fujian,China

3.2. Product Description

Main unit information:	
Product Name:	TWO WAY RADIO
Trade Mark:	
Model No.:	TC368
Listed Model(s):	TC368PLUS, TC368D, TC388
Power supply:	DC 7.4V from Battery
Hardware version:	TC368 Ver 1.0
Software version:	TC368 FCC program Ver 1.2.1
Accessory unit information:	
Battery information:	Model: TC368 Voltage: DC 7.4V Capacity: 2800mAh(20.72WH)
Charger information:	Model: DC368 Input: DC5V,1000mA Output: DC5V,1000mA

3.3. Radio Specification Description

Support Frequency Range:	462MHz Main channel:	462.5500, 462.5750, 462.6000, 462.6250, 462.6500, 462.6750, 462.7000, 462.7250MHz
	462MHz interstitial channel:	462.5625, 462.5875, 462.6125, 462.6375, 462.6625, 462.6875, 462.7125 MHz
	467MHz Main channel:	467.5500, 467.5750, 467.6000, 467.6250, 467.6500, 467.6750, 467.7000, 467.7250MHz
	467MHz interstitial channel:	467.5675, 467.5875, 467.6125, 467.6375, 467.6625, 467.6875, 467.7125MHz
Modulation Type:	FM	
Emission Designator: * ¹	14K0F3E, 11K0F3E	
Antenna Type:	Integral	
Antenna Gain:	2.15dBi	

Note:

(1) *¹ According to FCC Part 2.202 requirements, the Necessary Bandwidth is calculated as follows:

- For FM Voice Modulation

Channel Spacing = 12.5 KHz, D = 2.5 KHz max, K = 1, M = 3 KHz

$B_n = 2M + 2DK = 2*3 + 2*2.5*1 = 11 \text{ KHz}$

Emission designation: 11K0F3E

Channel Spacing = 20 KHz, D = 4 KHz max, K = 1, M = 3 KHz

$B_n = 2M + 2DK = 2*3 + 2*5*1 = 14 \text{ KHz}$

Emission designation: 14K0F3E

(2) The device only supports voice communication.

3.4. Testing Laboratory Information

Laboratory Name	Shenzhen Huatongwei International Inspection Co., Ltd.	
Laboratory Location	1/F, Bldg 3, Hongfa Hi-tech Industrial Park, Genyu Road, Tianliao, Gongming, Shenzhen, China	
Connect information:	Tel: 86-755-26715499 E-mail: cs@szhtw.com.cn http://www.szhtw.com.cn	
Qualifications	Type	Accreditation Number
	FCC	762235

4. TEST CONFIGURATION

4.1. Test frequency list

According to ANSI C63.26 section 5.1.2.1:

Measurements of transmitters shall be performed and, if required, reported for each frequency band in which the EUT can be operated with the device transmitting at the number of frequencies in each band specified in Table 2.

Frequency range over which EUT operates	Number of frequencies	Location in frequency range of operation
1 MHz or less	1	Middle
1 MHz to 10 MHz	2	1 near top and 1 near bottom
More than 10 MHz	3	1 near top, 1 near middle, and 1 near bottom

Test Channel	Frequency range	Type	Frequency (MHz)
CH _{M1}	462MHz	Interstitial	462.6375
CH _{M2}	467MHz	Interstitial	467.6375
CH _{M3}	462MHz	Main	462.6500
CH _{M4}	467MHz	Main	467.6500

The Product channel frequency table:

Frequency Band	Type	Frequency (MHz)	Frequency Band	Type	Frequency (MHz)
462MHz	Main	462.5500	467MHz	Main	467.5500
		462.5750			467.5750
		462.6000			467.6000
		462.6250			467.6250
		462.6500			467.6500
		462.6750			467.6750
		462.7000			467.7000
		462.7250			467.7250
462MHz	Interstitial	462.5625	467MHz	Interstitial	467.5675
		462.5875			467.5875
		462.6125			467.6125
		462.6375			467.6375
		462.6625			467.6625
		462.6875			467.6875
		462.7125			467.7125

4.2. Test mode

Test mode	Transmitting	Receiving	Charging	GMRS
TX-GMRS	√			√
RX-GMRS		√		√

Note:

√: is operation mode.

Modulation Type	Description
UM	Un-modulation
AM2	Apply a 1000 Hz tone and adjust the audio frequency generator to produce 20% of the rated system deviation.
AM6	Apply a 1000 Hz modulating signal to the transmitter from the audio frequency generator, and adjust the level to obtain 60% of full rated system deviation, then increase the level from the audio generator by 20 dB
AM5	Modulate the transmitter with a 2500 Hz sine wave at an input level 16 dB greater than that necessary to produce 50% of rated system deviation.

Test item	Modulation Type	Test mode
Output Power(ERP)	UM	TX-GMRS
99% Occupied Bandwidth & 26dB bandwidth	AM6	TX-GMRS
Emission Mask	AM5	TX-GMRS
Modulation Limit	AM6	TX-GMRS
Audio Frequency Response	AM2	TX-GMRS
Audio Low Pass Filter Response	AM2	TX-GMRS
Frequency Stability VS Temperature	UM	TX-GMRS
Frequency Stability VS Voltage	UM	TX-GMRS
Transmit Radiated Spurious Emission	AM5	TX-GMRS

4.3. Support unit used in test configuration and system

The EUT has been associated with peripherals and configuration operated in a manner tended to maximize its emission characteristics in a typical application.

The following peripheral devices and interface cables were connected during the measurement:

Whether support unit is used?					
✓ No					
Item	Equipment	Trade Name	Model No.	FCC ID	Power cord
1	-	-	-	-	-
2	-	-	-	-	-

4.4. Testing environmental condition

Type	Requirement	Actual
Temperature:	15~35°C	25°C
Relative Humidity:	25~75%	50%
Air Pressure:	860~1060mbar	1000mbar
Test voltage:	Normal voltage (V_N):	
	Extreme lower voltage (V_L):	
	Extreme higher voltage (V_H):	

4.5. Measurement uncertainty

Test Item	Measurement Uncertainty
Frequency stability	25 Hz
Carrier output power (ERP)	2.20 dB
Occupied Bandwidth	35 Hz
Modulation Limiting	0.42 %
FM deviation	25 Hz
Audio level	0.62 dB
Radiated Spurious Emission 30~1000MHz	4.65 dB
Radiated Spurious Emission 1~18GHz	5.16 dB
AC power line Conducted Emission 9KHz-30MHz	3.39 dB

This uncertainty represents an expanded uncertainty expressed at approximately the 95% confidence level using a coverage factor of $k=1.96$.

4.6. Equipment Used during the Test

● Conducted test item							
Used	Test Equipment	Manufacturer	Equipment No.	Model No.	Serial No.	Last Cal. Date (YY-MM-DD)	Next Cal. Date (YY-MM-DD)
●	Spectrum Analyzer	Agilent	HTWE0286	N9020A	MY50510187	2022/08/25	2023/08/24
●	Signal & Spectrum Analyzer	R&S	HTWE0262	FSW26	103440	2022/08/25	2023/08/24
●	RF Communication Test Set	HP	HTWE0038	8920A	3813A10206	2022/08/25	2023/08/24
●	Digital intercom communication tester	Aeroflex	HTWE0255	3920B	1001682041	2022/08/25	2023/08/24
●	RF Control Unit	Tonscend	HTWE0294	JS0806-2	N/A	N/A	N/A
●	Filter-VHF	Microwave	HTWE0309	N26460M1	498702	N/A	N/A
●	Filter-UHF	Microwave	HTWE0311	N25155M2	498704	N/A	N/A
●	Attenuator	JFW	HTWE0292	50FH-030-100	N/A	2022/05/16	2023/05/15
●	Attenuator	JFW	HTWE0293	50-A-MFN-20	0322	2022/05/16	2023/05/15
●	Test software	HTW	N/A	Radio ATE	N/A	N/A	N/A

● Auxiliary Equipment							
Used	Test Equipment	Manufacturer	Equipment No.	Model No.	Serial No.	Last Cal. Date (YY-MM-DD)	Next Cal. Date (YY-MM-DD)
●	Climate chamber	ESPEC	HTWE0254	GPL-2	N/A	2022/08/29	2023/08/28
●	DC Power Supply	Gwinstek	HTWE0274	SPS-2415	GER835793	N/A	N/A

● Radiated Spurious Emission

Used	Test Equipment	Manufacturer	Equipment No.	Model No.	Serial No.	Last Cal. Date (YY-MM-DD)	Next Cal. Date (YY-MM-DD)
●	Semi-Anechoic Chamber	Albatross projects	HTWE0122	SAC-3m-01	C11121	2018/09/27	2023/09/26
●	Spectrum Analyzer	R&S	HTWE0098	FSP40	100597	2022/08/25	2023/08/24
●	Loop Antenna	R&S	HTWE0546	HFH2-Z2E	101073	2021/05/25	2024/05/24
●	Horn Antenna	ETS	HTWE0548	3117	240120	2022/05/20	2025/05/19
●	Ultra-Broadband Antenna	SCHWARZBECK	HTWE0547	VULB9163	945	2022/05/23	2025/05/22
○	Horn Antenna	STEATITE	HTWE0549	QMS-00880	25661	2022/05/20	2025/05/19
●	Pre-amplifier	CD	HTWE0071	PAP-0102	12004	2022/11/04	2023/11/03
●	Broadband Preamplifier	SCHWARZBECK	HTWE0201	BBV 9718	9718-248	2023/02/27	2024/02/26
●	RF Connection Cable	HUBER+SUHNER	HTWE0120-01	6m 18GHz S Serisa	N/A	2023/02/24	2024/02/23
●	RF Connection Cable	HUBER+SUHNER	HTWE0120-02	6m 3GHz RG Serisa	N/A	2023/02/24	2024/02/23
●	RF Connection Cable	HUBER+SUHNER	HTWE0119-05	6m 3GHz RG Serisa	N/A	2023/02/24	2024/02/23
●	RF Connection Cable	HUBER+SUHNER	HTWE0120-04	6m 3GHz RG Serisa	N/A	2023/02/24	2024/02/23
●	EMI Test Software	Audix	N/A	E3	N/A	N/A	N/A

● Auxiliary Equipment

Used	Test Equipment	Manufacturer	Equipment No.	Model No.	Serial No.	Last Cal. Date (YY-MM-DD)	Next Cal. Date (YY-MM-DD)
●	Radio communication tester	R&S	HTWE0287	CMW500	137688-Lv	2022/08/25	2023/08/24
●	High pass filter	Wainwright	HTWE0297	WHKX3.0/18G-10SS	38	2023/05/15	2024/05/14
○	Band Stop filter	-	HTWE0039	N/A	N/A	2023/02/03	2024/02/02

5. TEST CONDITIONS AND RESULTS

5.1. Carrier Output Power (ERP)

LIMIT

FCC Part FCC Part 95.1767, FCC Part 2.1046

(a) 462/467 MHz main channels.

The limits in this paragraph apply to stations transmitting on any of the 462 MHz main channels or any of the 467 MHz main channels. Each GMRS transmitter type must be capable of operating within the allowable power range. GMRS licensees are responsible for ensuring that their GMRS stations operate in compliance with these limits.

(1) The transmitter output power of mobile, repeater and base stations must **not exceed 50 Watts**.

(2) The transmitter output power of fixed stations must **not exceed 15 Watts**.

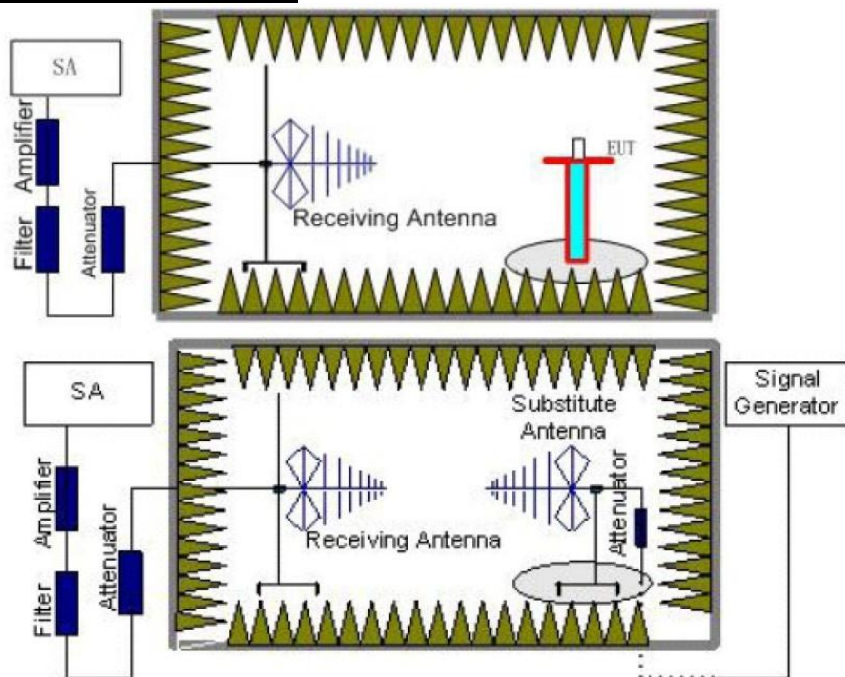
(b) 462 MHz interstitial channels.

The effective radiated power (ERP) of mobile, hand-held portable and base stations transmitting on the 462MHz interstitial channels must **not exceed 5 Watts**.

(c) 467 MHz interstitial channels.

The effective radiated power (ERP) of hand-held portable units transmitting on the 467 MHz interstitial channels must **not exceed 0.5 Watt**. Each GMRS transmitter type capable of transmitting on these channels must be designed such that the ERP does not exceed 0.5 Watt.

TEST CONFIGURATION



TEST PROCEDURE

- 1) The measuring distance of at 3m shall be used for measurements
- 2) The EUT was placed on the top of a rotating table 0.8 meters above the ground at a 3 meter semi-anechoic chamber. The table was rotated 360 degrees to determine the position of the highest radiation
- 3) The height of the equipment or of the substitution antenna shall be 0.8 m; the height of the test antenna shall vary between 1 m to 4 m. Both horizontal and vertical polarizations of the antenna are set to make the measurement.
- 4) The spectrum setting for Equivalent Isotropically Radiated Power (EIRP) is RBW = 100kHz, VBW = 300kHz. Detector Mode is Positive Peak
- 5) Record the field strength level of the EUT from the spectrum
- 6) The substitution antenna is substituted for EUT at the same position and signals generator (S.G) export the CW signal to the substitution antenna via a TX cable. The receiver antenna shall be moved height from 1m to 4m to find the highest radiation. Adjust the S.G. output level and repeat this step to get the same field strength level as the EUT
- 7) The EIRP level = S.G. output level(dBm)- TX cable(dB) + Substituted Antenna Gain(dBi)
- 8) The ERP level = EIRP-2.15

TEST MODE

Please reference to the section 4.2

TEST RESULTS

☒ **Passed** ☐ **Not Applicable**

TEST Data

Please refer to appendix report

5.2. 99% Occupied Bandwidth & 26dB Bandwidth

LIMIT

FCC Part 95.1773, FCC Part 2.1049

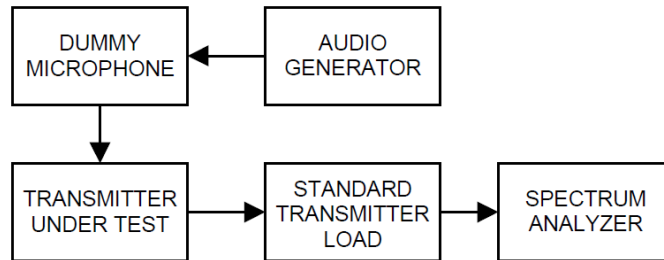
(a) Main channels.

The authorized bandwidth is **20 kHz** for GMRS transmitters operating on any of the 462 MHz main channels or any of the 467 MHz main channels.

(b) Interstitial channels.

The authorized bandwidth is **20 kHz** for GMRS transmitters operating on any of the 462 MHz interstitial channels and is **12.5 kHz** for GMRS transmitters operating on any of the 467 MHz interstitial channels

TEST CONFIGURATION



TEST PROCEDURE

- 1) Connect the equipment as illustrated
- 2) Spectrum set as follow:
Centre frequency = the nominal EUT channel center frequency,
The frequency span for the spectrum analyzer shall be set wide enough to capture all modulation products including the emission skirts (typically a span of $1.5 \times \text{OBW}$ is sufficient)
RBW = 1% to 5% of the anticipated OBW, VBW $\geq 3 \times \text{RBW}$, Sweep = auto,
Detector function = peak, Trace = max hold
- 3) Set 99% Occupied Bandwidth and 26dB Bandwidth
- 4) Measure and record the results in the test report.

TEST MODE

Please reference to the section 4.2

TEST RESULTS

☒ Passed ☐ Not Applicable

TEST Data

Please refer to appendix report

5.3. Emission Mask

LIMIT

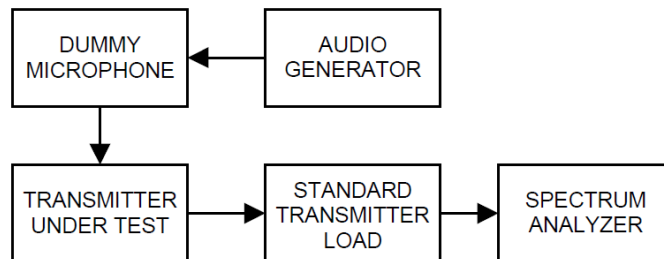
FCC Part 95.1779(b)(1)(2)(7), FCC Part 2.1049

(b) Attenuation requirements.

The power of unwanted emissions must be attenuated below the transmitter output power in Watts (P) by at least:

- (1) **25 dB** (decibels) on any frequency removed from the center of the authorized bandwidth by more than 50% up to and including 100% of the authorized bandwidth.
- (2) **35 dB** on any frequency removed from the center of the authorized bandwidth by more than 100% up to and including 250% of the authorized bandwidth.
- (7) **$43 + 10 \log (P)$ dB** on any frequency removed from the center of the authorized bandwidth by more than 250%.

TEST CONFIGURATION



TEST PROCEDURE

- 1) Connect the equipment as illustrated.
- 2) Spectrum set as follow:
Centre frequency = fundamental frequency, RBW=300Hz, VBW=1000Hz, Sweep = auto, Detector function = peak, Trace = max hold
- 3) Key the transmitter, and set the level of the unmodulated carrier to a full scale reference line.
This is the 0dB reference for the measurement.
- 4) Apply Input Modulation Signal to EUT according to Section 4.2
- 5) Measure and record the results in the test report.

TEST MODE

Please reference to the section 4.2

TEST RESULTS

☒ **Passed** ☐ **Not Applicable**

TEST Data

Please refer to appendix report

5.4. Modulation Limit

LIMIT

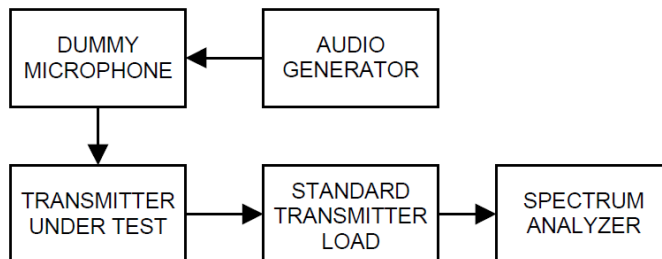
FCC Part 95.1775, FCC Part 2.1047(b)

Each GMRS transmitter type must be designed to satisfy the modulation requirements in this section.

Operation of GMRS stations must also be in compliance with these requirements.

- (a) **Main channels** The peak frequency deviation for emissions to be transmitted on the main channels must **not exceed ± 5 kHz**.
- (b) **462 MHz interstitial channels**. The peak frequency deviation for emissions to be transmitted on the 462 MHz interstitial channels must **not exceed ± 5 kHz**.
- (c) **467 MHz interstitial channels**. The peak frequency deviation for emissions to be transmitted on the 467 MHz interstitial channels must **not exceed ± 2.5 kHz**, and the highest audio frequency contributing substantially to modulation must **not exceed 3.125 kHz**.

TEST CONFIGURATION



TEST PROCEDURE

- 1) Connect the equipment as illustrated.
- 2) Adjust the transmitter per the manufacturer's procedure for full rated system deviation.
- 3) Set the test receiver to measure peak positive deviation. Set the audio bandwidth for ≤ 0.25 Hz to $\geq 15,000$ Hz. Turn the de-emphasis function off.
- 4) Apply a 1000 Hz modulating signal to the transmitter from the audio frequency generator, and adjust the level to obtain 60% of full rated system deviation.
- 5) Increase the level from the audio frequency generator by 20 dB in one step (rise time between the 10% and 90% points shall be 0.1 second maximum).
- 6) Measure both the instantaneous and steady-state deviation at and after the time of increasing the audio input level
- 7) With the level from the audio frequency generator held constant at the level obtained in step 4), slowly vary the audio frequency from 300 Hz to 3000 Hz and observe the steady-state deviation. Record the maximum deviation.

TEST MODE

Please reference to the section 4.2

TEST RESULTS

☒ **Passed** ☐ **Not Applicable**

TEST Data

Please refer to appendix report

5.5. Audio Frequency Response

LIMIT

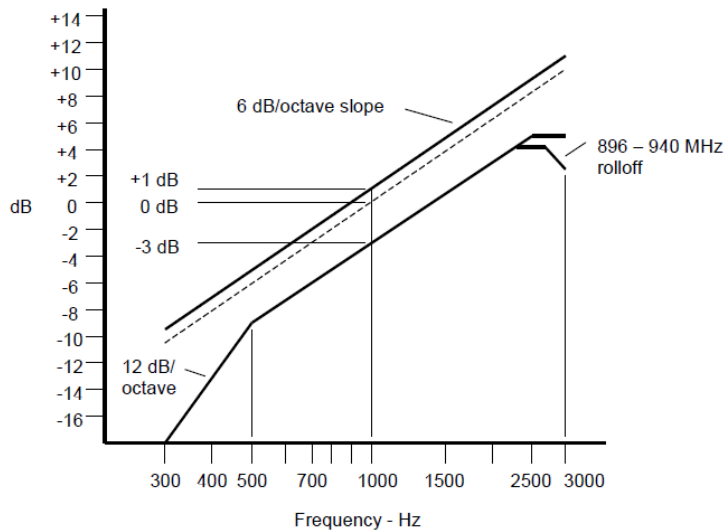
FCC Part 95.1775, FCC Part 2.1047(a)

Each GMRS transmitter type must be designed to satisfy the modulation requirements in this section.

Operation of GMRS stations must also be in compliance with these requirements.

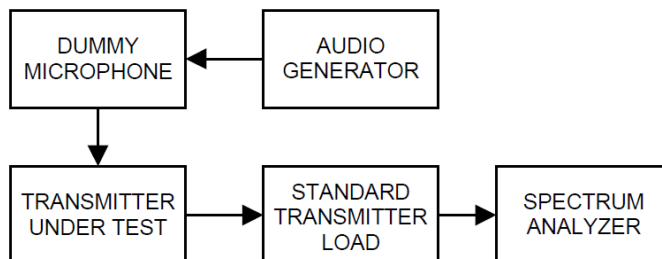
- (d) **Main channels** The peak frequency deviation for emissions to be transmitted on the main channels must **not exceed ± 5 kHz**.
- (e) **462 MHz interstitial channels.** The peak frequency deviation for emissions to be transmitted on the 462 MHz interstitial channels must **not exceed ± 5 kHz**.
- (f) **467 MHz interstitial channels.** The peak frequency deviation for emissions to be transmitted on the 467 MHz interstitial channels must **not exceed ± 2.5 kHz**, and the highest audio frequency contributing substantially to modulation must **not exceed 3.125 kHz**.

Voice modulated communication equipment. A curve or equivalent data showing the frequency response of the audio modulating circuit over a range of 100 to 5000 Hz shall be submitted.



An additional 6 dB per octave attenuation is allowed from 2500 Hz to 3000 Hz in equipment operating in the 25 MHz to 869 MHz range.

TEST CONFIGURATION



TEST PROCEDURE

- 1) Connect the equipment as illustrated.
- 2) Set the test receiver to measure peak positive deviation. Set the audio bandwidth for 50 Hz to 15,000 Hz. Turn the de-emphasis function off.
- 3) Set the DMM to measure rms voltage.
- 4) Adjust the transmitter per the manufacturer's procedure for full rated system deviation.
- 5) Apply a 1000 Hz tone and adjust the audio frequency generator to produce 20% of the rated system deviation.
- 6) Set the test receiver to measure rms deviation and record the deviation reading.
- 7) Record the DMM reading as V_{REF} .
- 8) Set the audio frequency generator to the desired test frequency between 300 Hz and 3000 Hz.
- 9) Vary the audio frequency generator output level until the deviation reading that was recorded in step 6) is obtained.
- 10) Record the DMM reading as V_{FREQ} .

- 11) Calculate the audio frequency response at the present frequency as:
audio frequency response= $20\log_{10}(V_{\text{FREQ}}/V_{\text{REF}})$.
- 12) Repeat steps 8) through 11) for all the desired test frequencies

TEST MODE

Please reference to the section 4.2

TEST RESULTS

☒ **Passed** ☐ **Not Applicable**

TEST Data

Please refer to appendix report

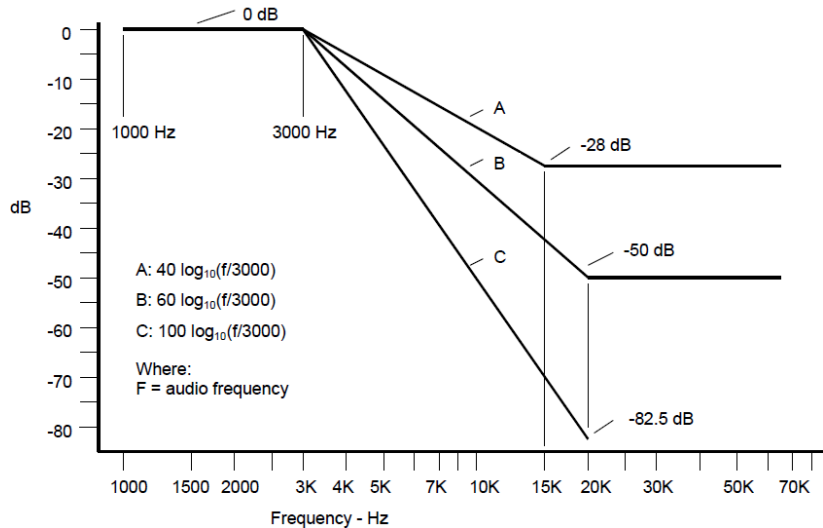
5.6. Audio Low Pass Filter Response

LIMIT

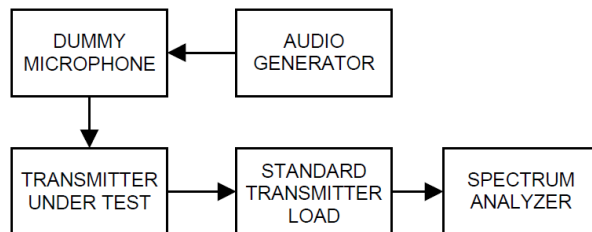
FCC Part 95.1775(e)(1)(2):

(e) Audio filter. Each GMRS transmitter type must include audio frequency low pass filtering, unless it complies with the applicable paragraphs of §95.1779 (without filtering).

- (1) The filter must be between the modulation limiter and the modulated stage of the transmitter.
- (2) At any frequency (f in kHz) between 3 and 20 kHz, the filter must have an attenuation of at least $60 \log(f/3)$ dB more than the attenuation at 1 kHz. Above 20 kHz, it must have an attenuation of at least 50 dB more than the attenuation at 1 kHz.



TEST CONFIGURATION



TEST PROCEDURE

- 1) Configure the EUT as shown in figure .
- 2) Apply a 1000 Hz tone from the audio signal generator and adjust the level per manufacturer's specifications. Record the dB level of the 1000 Hz tone as LEV_{REF} .
- 3) Set the audio signal generator to the desired test frequency between 3000 Hz and the upper low pass filter limit. Record the dB level at the test frequency as LEV_{FREQ} .
- 4) Calculate the audio frequency response at the test frequency as:
 low pass filter response = $LEV_{FREQ} - LEV_{REF}$

TEST MODE

Please reference to the section 4.2

TEST RESULTS

☒ Passed ☐ Not Applicable

TEST Data

Please refer to appendix report

5.7. Frequency stability VS Temperature

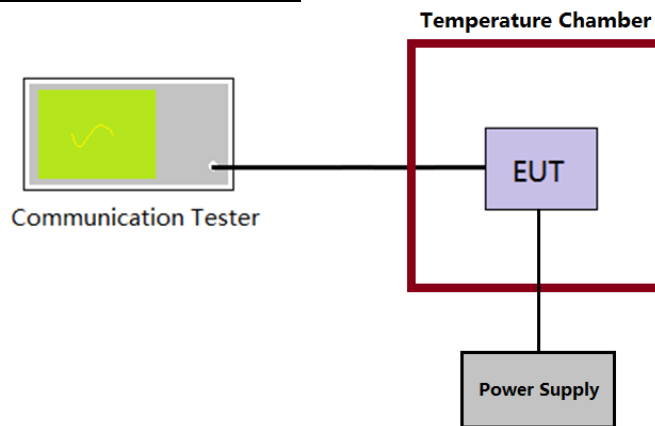
LIMIT

FCC Part 95.1765:

Each GMRS transmitter type must be designed to comply with the frequency accuracy requirements in this section under normal operating conditions. Operators of GMRS stations must also ensure compliance with these requirements.

- (a) The carrier frequency of each GMRS transmitter transmitting an emission with an occupied bandwidth greater than 12.5 kHz must remain **within 5 ppm** of the channel center frequencies listed in §95.1763 under normal operating conditions.
- (b) The carrier frequency of each GMRS transmitter transmitting an emission with an occupied bandwidth of 12.5 kHz or less must remain **within 2.5 ppm** of the channel center frequencies listed in §95.1763 under normal operating conditions.

TEST CONFIGURATION



TEST PROCEDURE

- 1) The EUT output port was connected to communication tester.
- 2) The EUT was placed inside the temperature chamber.
- 3) Turn EUT off and set the chamber temperature to -30°C . After the temperature stabilized for approximately 30 minutes recorded the frequency as MCF_{MHz} .
- 4) Calculate the ppm frequency error by the following:
$$\text{ppm error} = (MCF_{\text{MHz}} / ACF_{\text{MHz}} - 1) * 10^6$$

where
 MCF_{MHz} is the Measured Carrier Frequency in MHz
 ACF_{MHz} is the Assigned Carrier Frequency in MHz
- 5) Repeat step 3 measure with 10°C increased per stage until the highest temperature of $+50^{\circ}\text{C}$ reached.

TEST MODE

Please reference to the section 4.2

TEST RESULTS

☒ Passed ☐ Not Applicable

TEST Data

Please refer to appendix report

5.8. Frequency stability VS Voltage

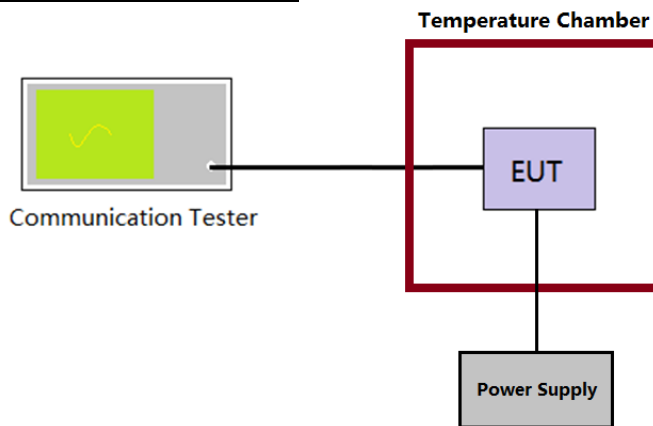
LIMIT

FCC Part 95.1765:

Each GMRS transmitter type must be designed to comply with the frequency accuracy requirements in this section under normal operating conditions. Operators of GMRS stations must also ensure compliance with these requirements.

- (a) The carrier frequency of each GMRS transmitter transmitting an emission with an occupied bandwidth greater than 12.5 kHz must remain **within 5 ppm** of the channel center frequencies listed in §95.1763 under normal operating conditions.
- (b) The carrier frequency of each GMRS transmitter transmitting an emission with an occupied bandwidth of 12.5 kHz or less must remain within **2.5 ppm** of the channel center frequencies listed in §95.1763 under normal operating conditions.

TEST CONFIGURATION



TEST PROCEDURE

- 1) The EUT output port was connected to communication tester.
- 2) The EUT was placed inside the temperature chamber at 25°C
- 3) Record the carrier frequency of the transmitter as MCF_{MHz}
- 4) Calculate the ppm frequency error by the following:
$$ppm\ error = (MCF_{MHz} / ACF_{MHz} - 1) * 10^6$$

where
 MCF_{MHz} is the Measured Carrier Frequency in MHz
 ACF_{MHz} is the Assigned Carrier Frequency in MHz
- 5) Repeat step 3 measure with varied $\pm 15\%$ of the nominal value measured at the input to the EUT

TEST MODE

Please reference to the section 4.2

TEST RESULTS

☒ Passed ☐ Not Applicable

TEST Data

Please refer to appendix report

5.9. Transmit Radiated Spurious Emission

LIMIT

FCC Part 95.1779(b)(1)(2)(7), FCC Part 2.1049

(c) Attenuation requirements.

The power of unwanted emissions must be attenuated below the transmitter output power in Watts (P) by at least:

- (1) **25 dB** (decibels) on any frequency removed from the center of the authorized bandwidth by more than 50% up to and including 100% of the authorized bandwidth.
- (2) **35 dB** on any frequency removed from the center of the authorized bandwidth by more than 100% up to and including 250% of the authorized bandwidth.
- (7) **$43 + 10 \log(P)$ dB** on any frequency removed from the center of the authorized bandwidth by more than 250%.

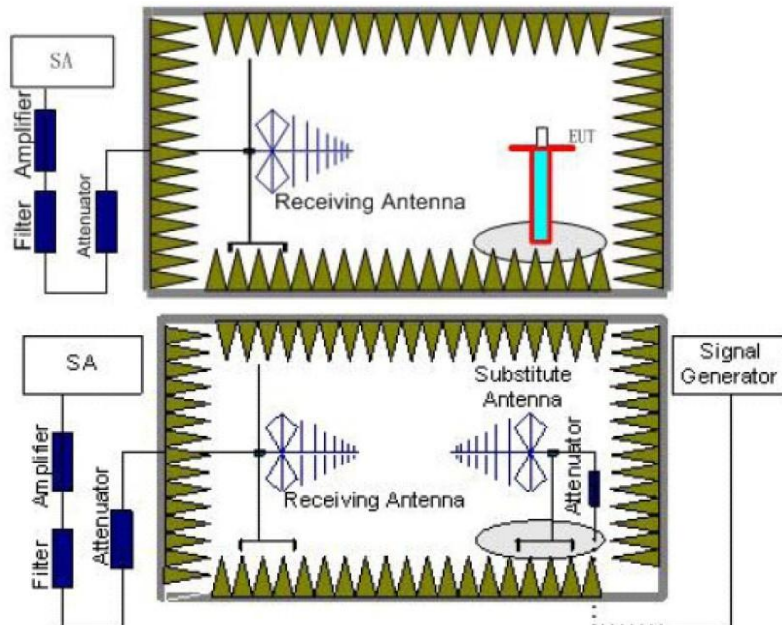
Note:

Limit (dBm) = $EL - [43 + 10 \log(P)] = 10 \log(P \times 1000) - [43 + 10 \log(P)] = 10 \log(P) + 30 - 43 - 10 \log(P) = -13 \text{ dBm}$

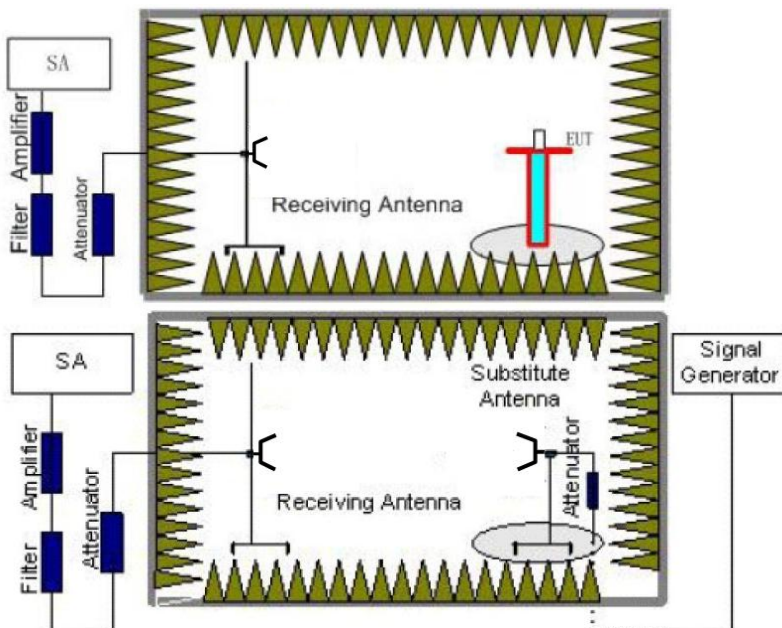
EL is the emission level of the Output Power expressed in dBm,

TEST CONFIGURATION

Below 1GHz:



Above 1GHz:



TEST PROCEDURE

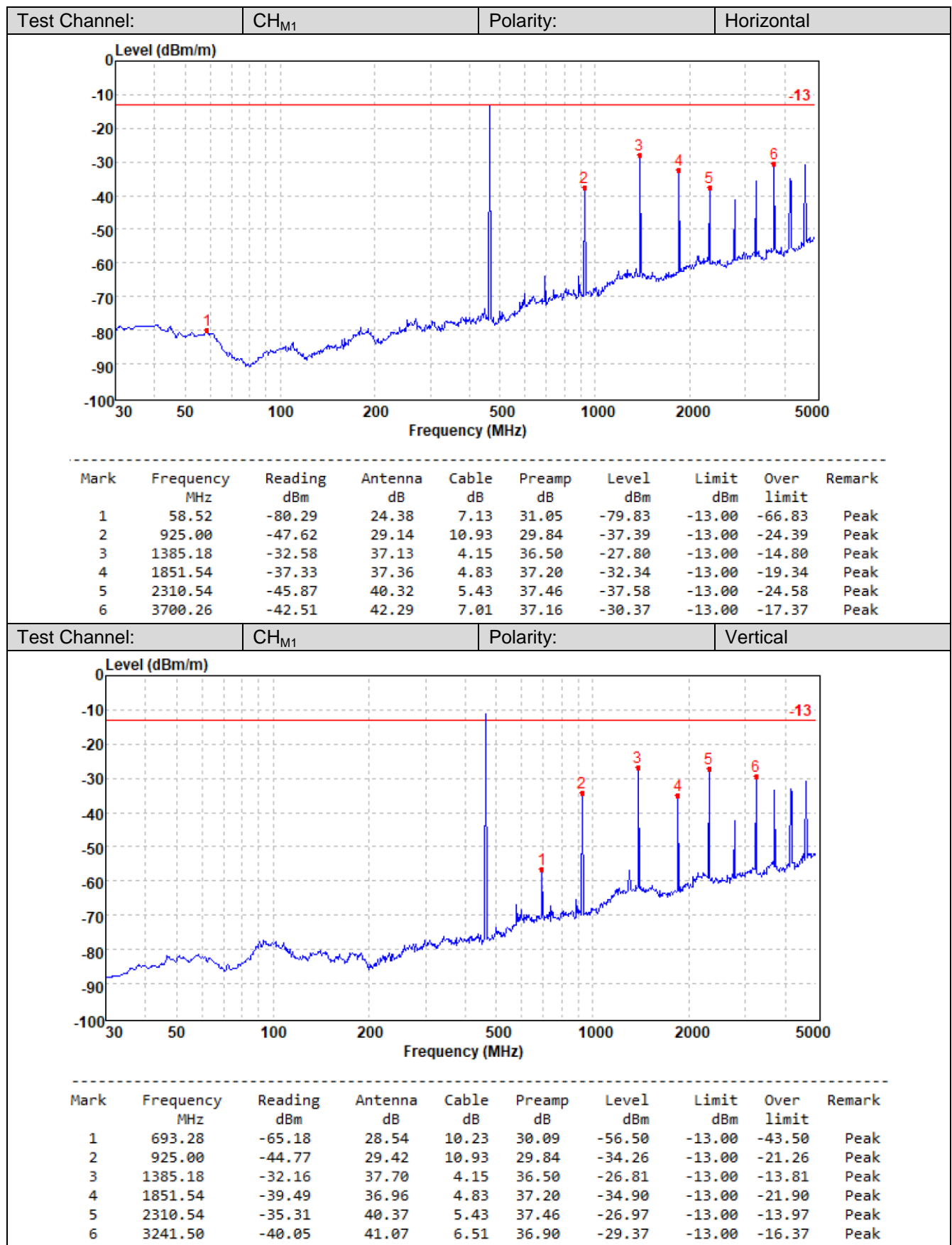
- 1) The measuring distance of at 3m shall be used for measurements
- 2) The EUT is placed on a turn table which is 0.8 meter above ground for below 1 GHz, and 1.5 m for above 1 GHz. The table was rotated 360 degrees to determine the position of the highest radiation
- 3) The height of the equipment or of the substitution antenna shall be 0.8 m; the height of the test antenna shall vary between 1 m to 4 m. Both horizontal and vertical polarizations of the antenna are set to make the measurement.
- 4) The spectrum setting as follow
Below 1 GHz: RBW=120kHz, VBW=300kHz, Sweep time=auto, Detector =peak, Trace=max hold;
Above 1GHz: RBW=1MHz, VBW=3MHz Sweep time=auto, Detector=peak, Trace=max hold
- 5) Record the field strength level of the EUT from the spectrum
- 6) The substitution antenna is substituted for EUT at the same position and signals generator (S.G) export the CW signal to the substitution antenna via a TX cable. The receiver antenna shall be moved height from 1m to 4m to find the highest radiation. Adjust the S.G. output level and repeat this step to get the same field strength level as the EUT
- 7) The EIRP level = S.G. output level(dBm)- TX cable(dB) + Substituted Antenna Gain(dBi)
- 8) Record the ERP value for below 1GHz, ERP value = EIRP-2.15; Record the EIRP for above 1GHz.

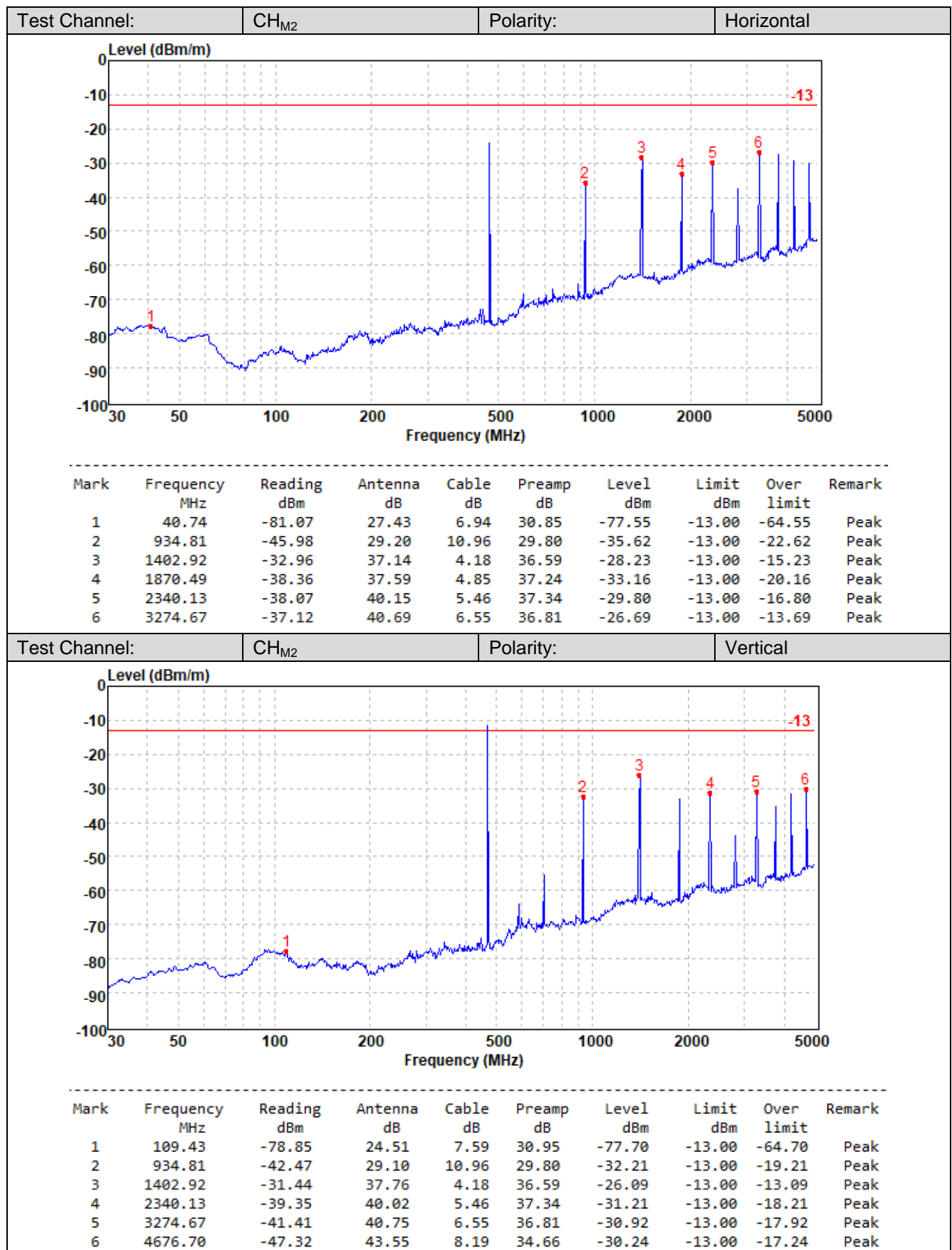
TEST MODE

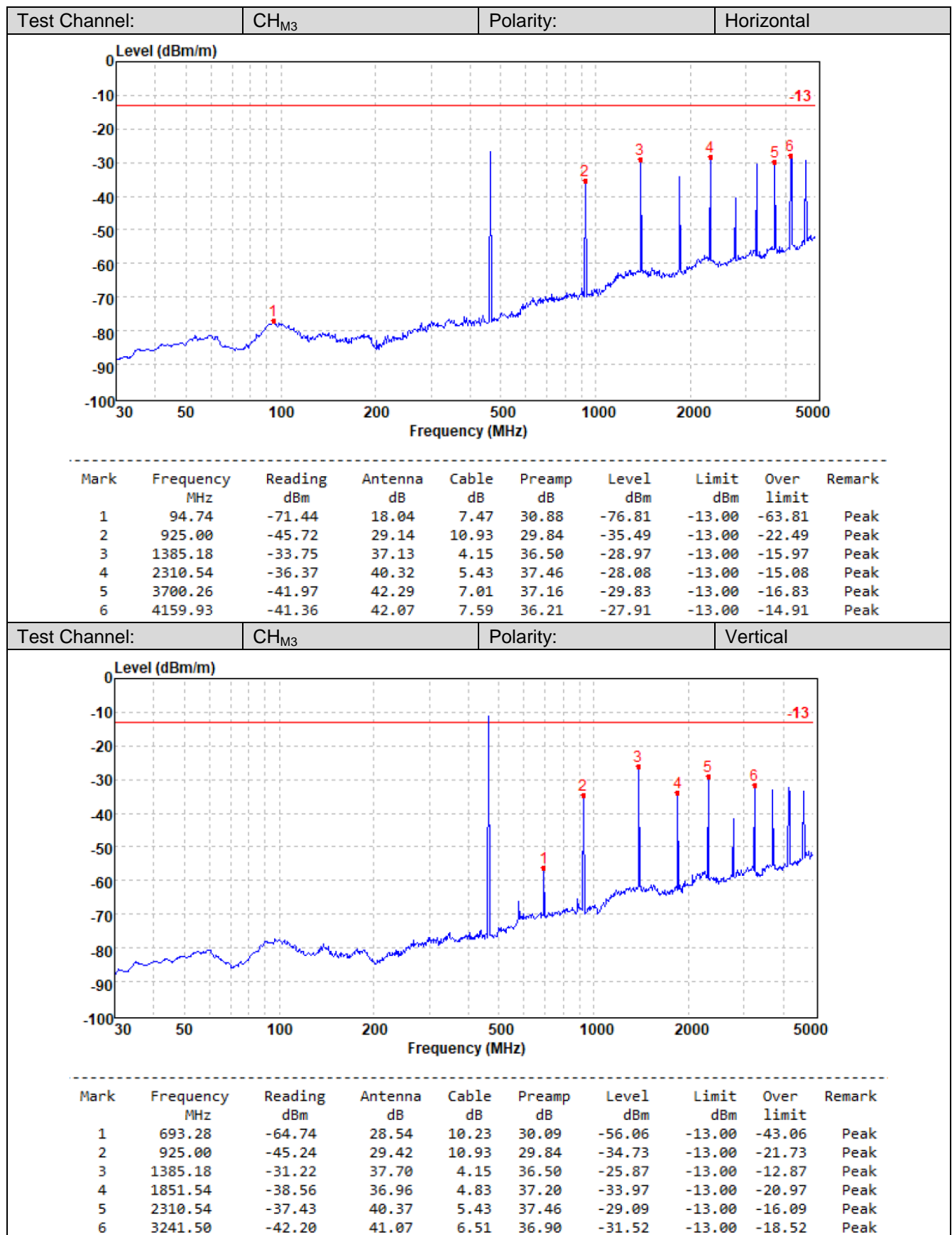
Please reference to the section 4.2

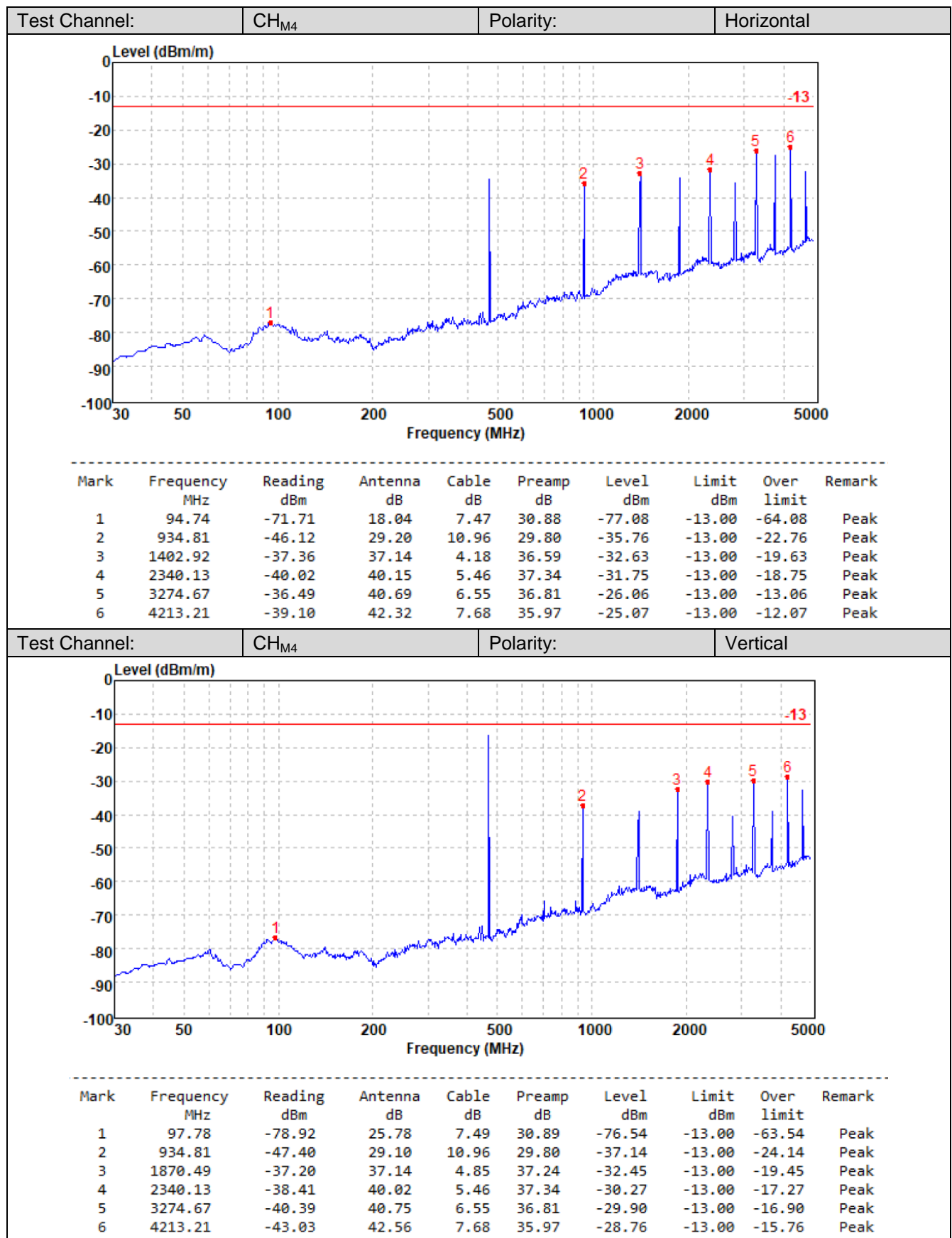
TEST RESULTS

☒ **Passed** ☐ **Not Applicable**









6. TEST SETUP PHOTOS



7. EXTERNAL AND INTERNAL PHOTOS

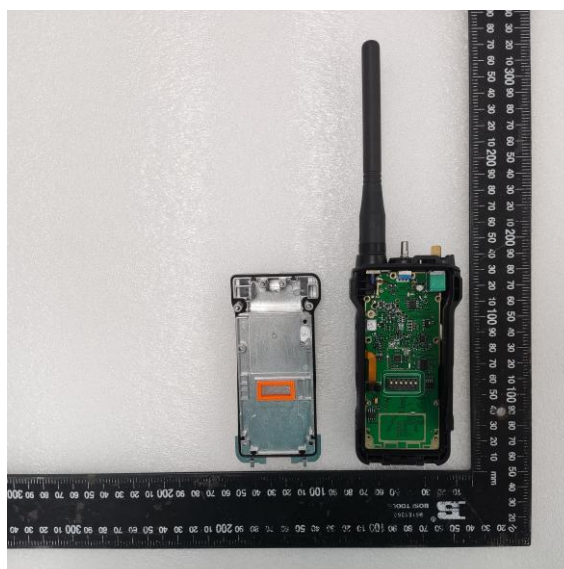
7.1. External Photos

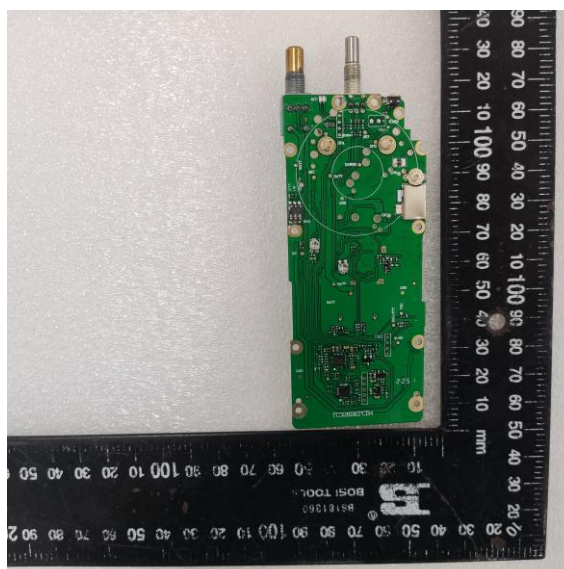
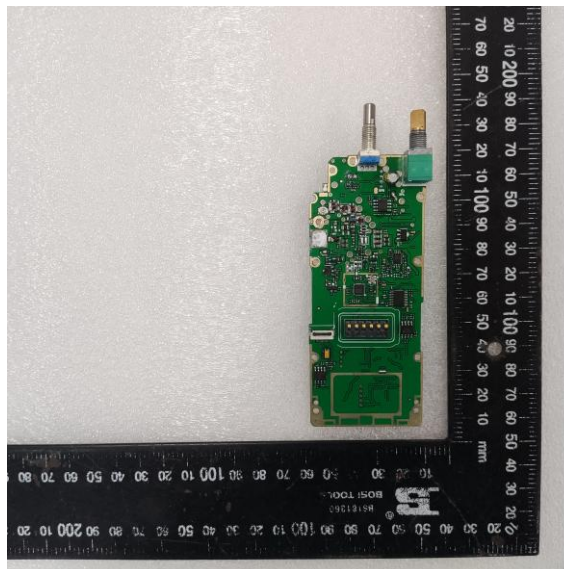
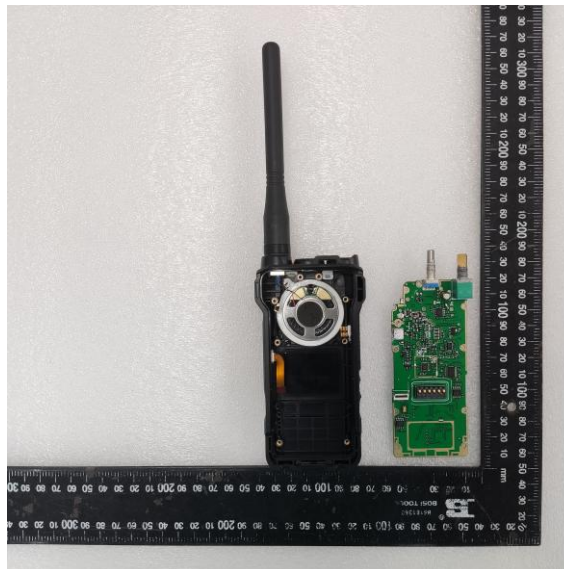






7.2. Internal Photos





8. APPENDIX REPORT