

EXHIBIT 9**INTERNAL PHOTOGRAPHS**

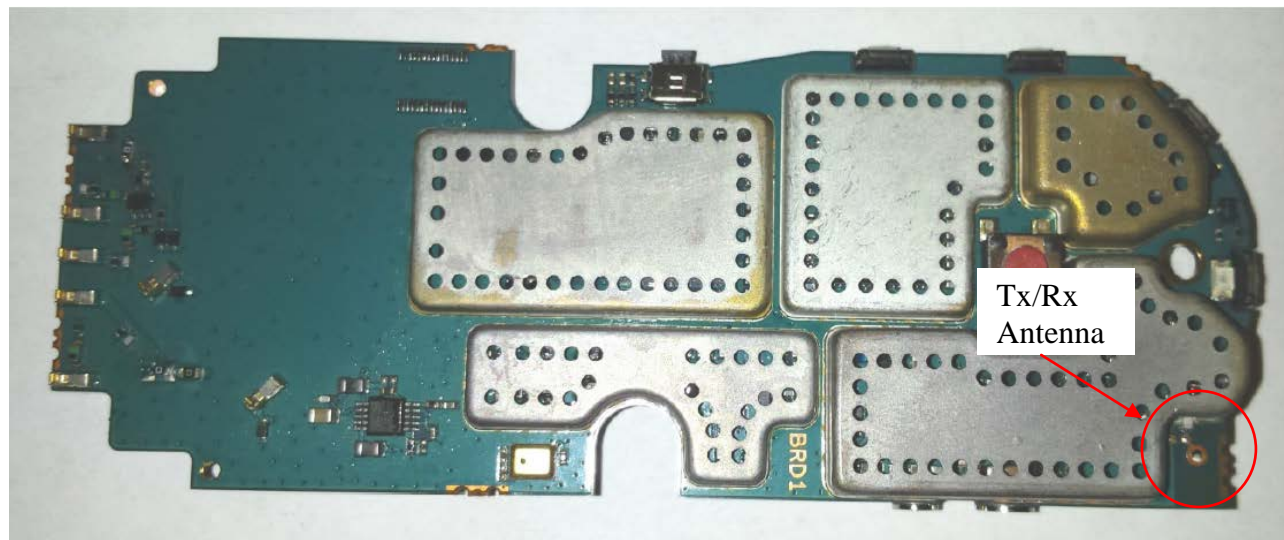
(Pursuant to FCC Part 2.1033(b)(7), 2.1033(c)(12) and RSP 100 Sec 8.3)

The following photographs are attached.

Exhibit

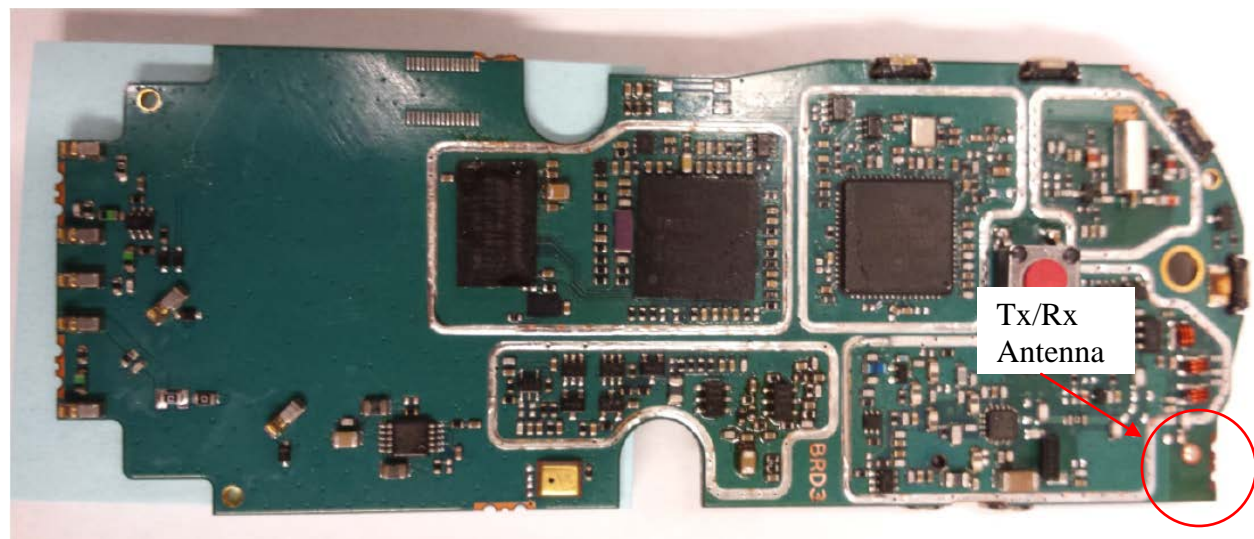
- | | |
|--|----|
| 1. RF board with Shields (Top), (DLR1020, DLR1060) | 9A |
| 2. RF board without Shields (Top), (DLR1020, DLR1060) | 9B |
| 3. RF board with Shields (Bottom), (DLR1020, DLR1060) | 9C |
| 4. RF board without Shields (Bottom), (DLR1020, DLR1060) | 9D |
| 5. Chassis and Housing (Front side), (DLR1020, DLR1060) | 9E |
| 6. Housing Assembly (Back side), (DLR1060, DLR1020) | 9F |
| 7. RF board <u>with</u> housing (Back side), (DLR1060) | 9G |
| 8. RF board <u>with</u> housing (Back side), (DLR1020) | 9H |
| 9. Exploded View of radio (DLR1020, DLR1060) | 9I |

Exhibits 9A



RF board with Shields (Top), (DLR1020, DLR1060)

Exhibit 9B



RF board without Shields (Top), (DLR1020, DLR1060)

Exhibit 9C



RF board with Shields (Bottom), (DLR1020, DLR1060)

Exhibit 9D



RF board without Shields (Bottom), (DLR1020, DLR1060)

Exhibit 9E



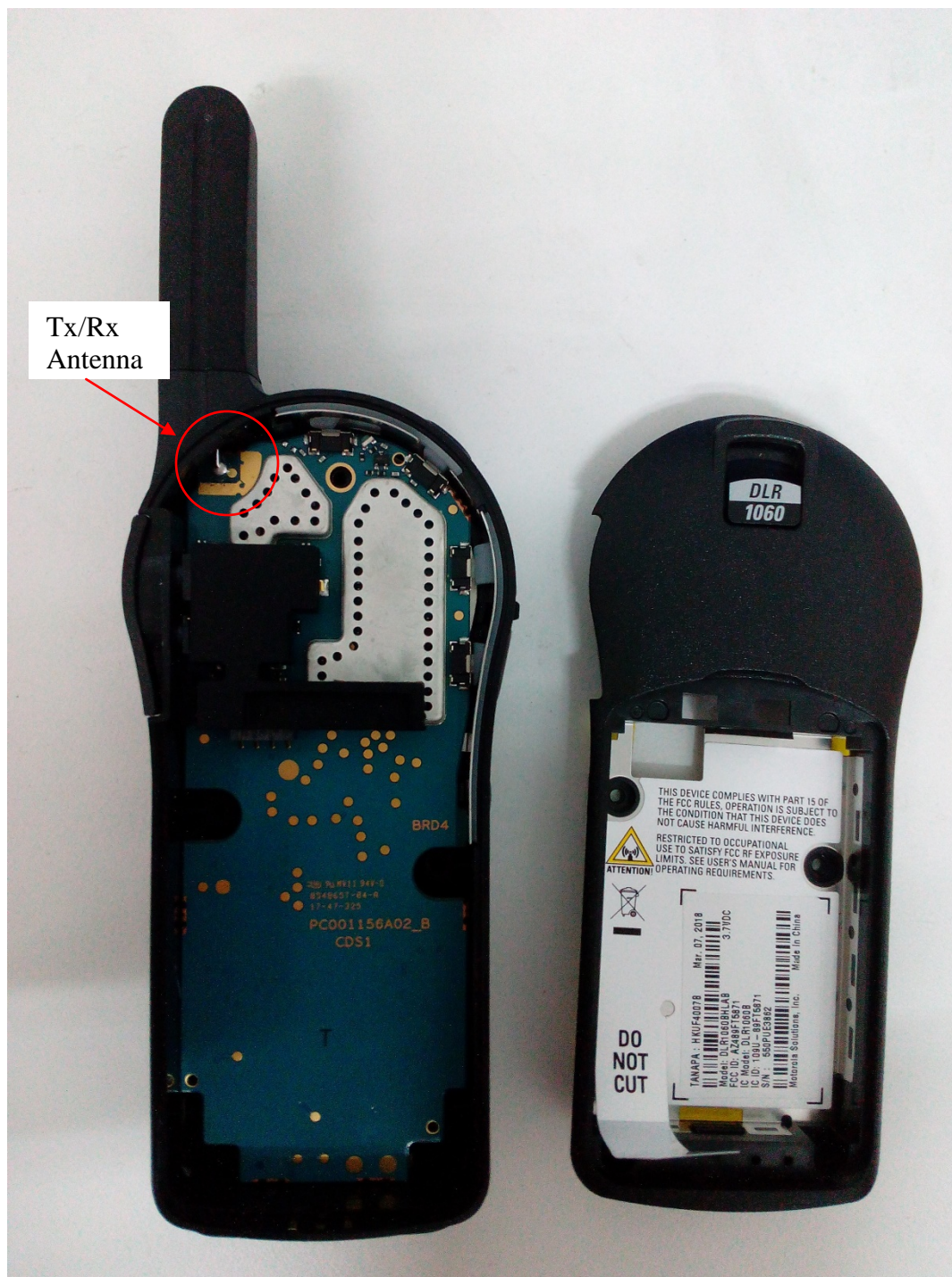
Chassis and Housing (front side), (DLR1060, DLR1020)

Exhibit 9F



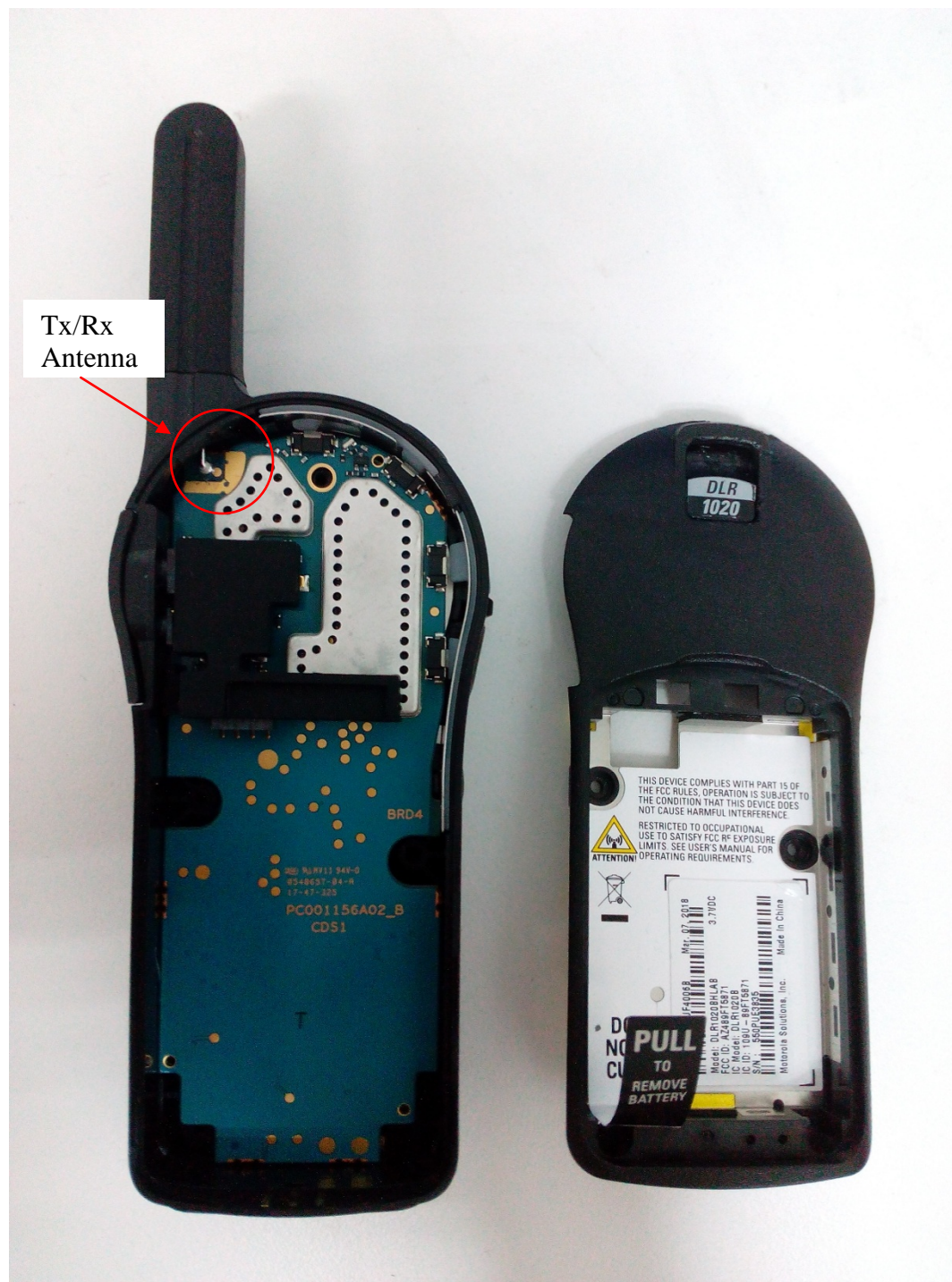
Housing Assembly (Back Side), (DLR1060, DLR1020)

Exhibit 9G



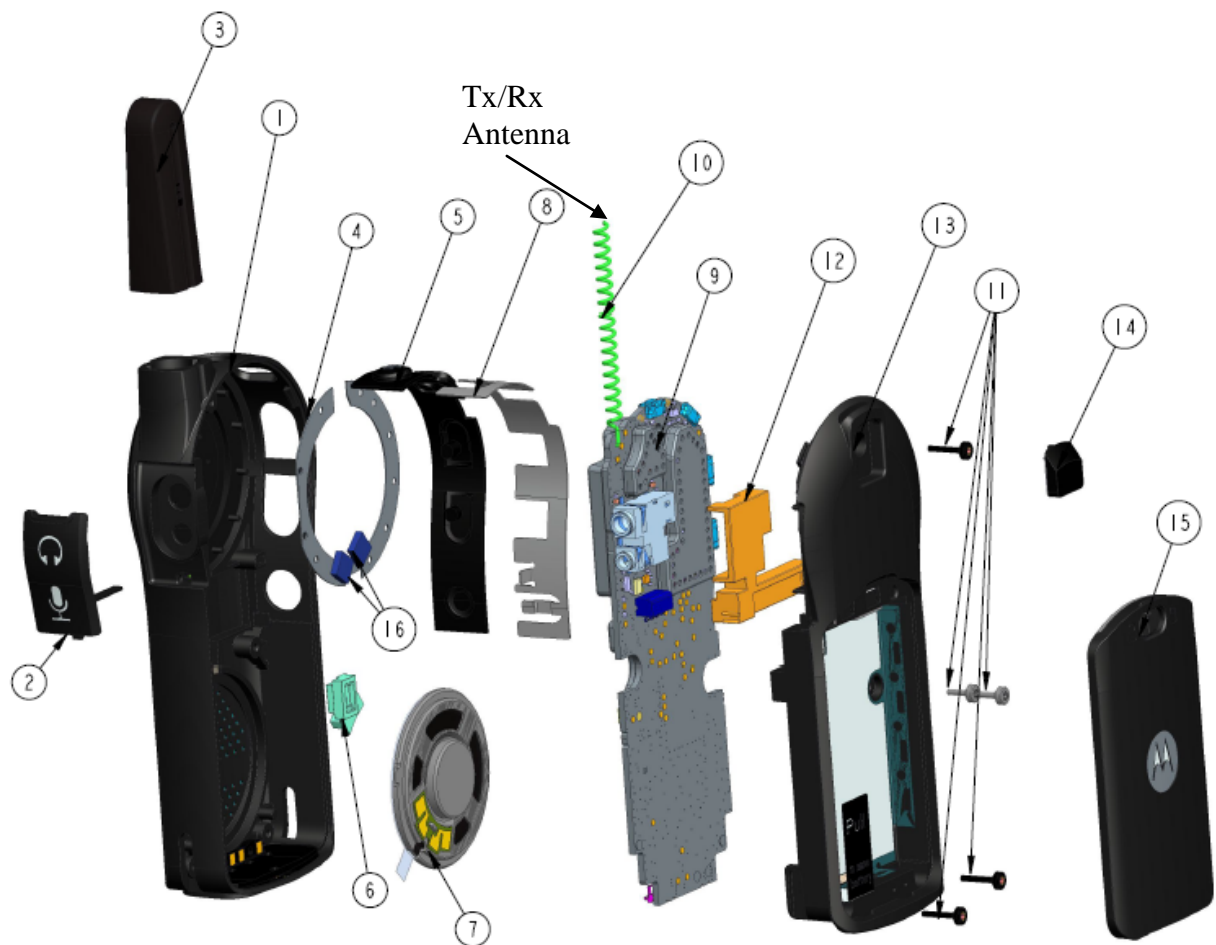
RF board with housing (Back side), (DLR1060)
(DLR1060BHLAA, DLR1060BHLAB)

Exhibit 9H



RF board with housing (Back side), (DLR1020)
(DLR1020BHLAA, DLR1020BHLAB)

Exhibit 9I



Exploded View of Radio (DLR1020, DLR1060)