



Bluetooth Antenna
specification&Test report

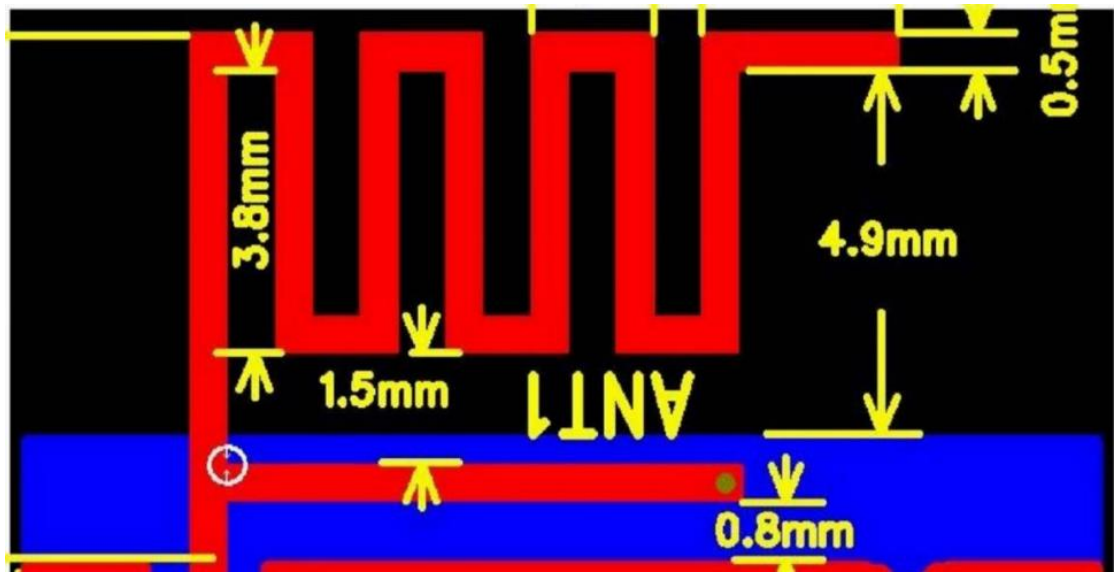
Yichip Microelectronics

©2014

Test Company	Hitech Industrial Co., Ltd
Test Address	FL 6, Yufeng Building, HONGxing Village, Shiyan Guangming New District, Shenzhen, China
Test Date	2020/7/24
Test Instrument	
Model: HT721	

antenna design specification

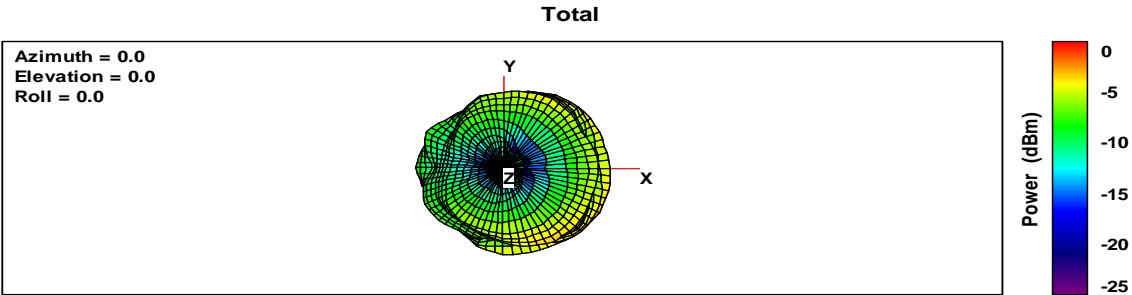
This Wiggle antenna is used in normal module with whole layout board which size is 13mm*18mm and thickness is 1.0mm (FR4)



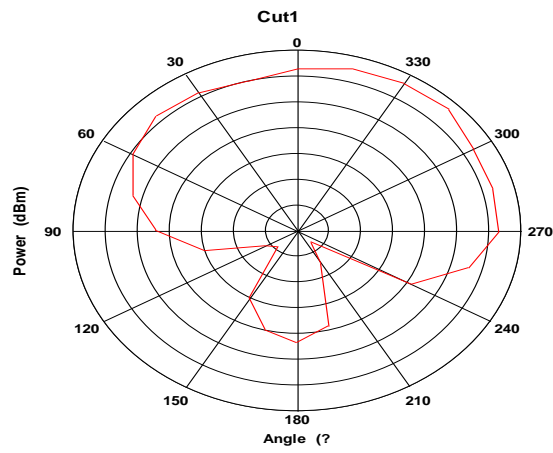
Gain and Efficiency

Frequency (MHz)	Efficiency(%)	Gain(dBi)
2402	14.86	-0.93
2420	12.54	-1.17
2440	9.92	-2.03
2460	7.46	-2.47
2480	6.11	-2.98

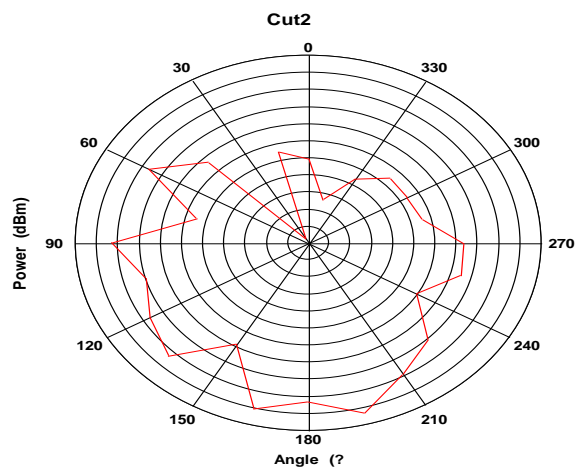
3D and 1D Radiation Patterns



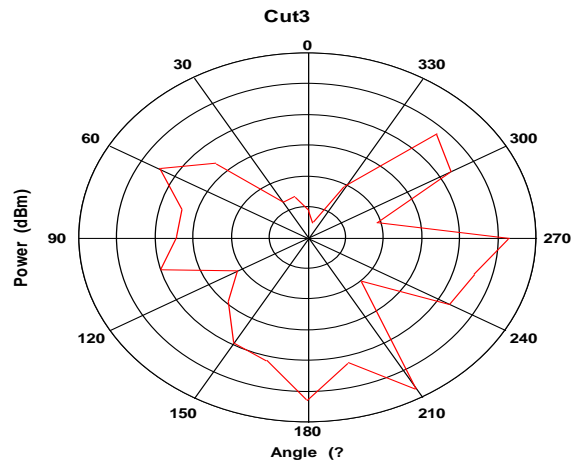
2440M TRP 1



Max: -2
Min: -16
Scale: 2/div



Max: 0
Min: -22
Scale: 2/div



Max: -2
Min: -14
Scale: 2/div