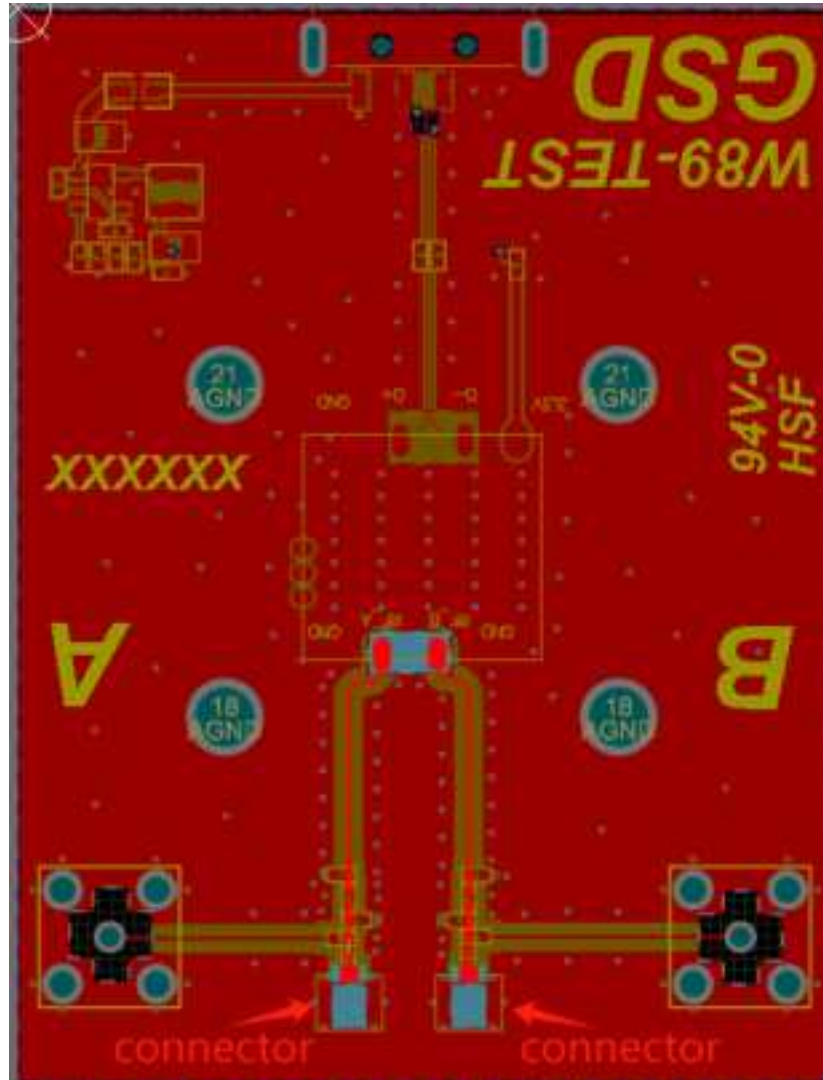
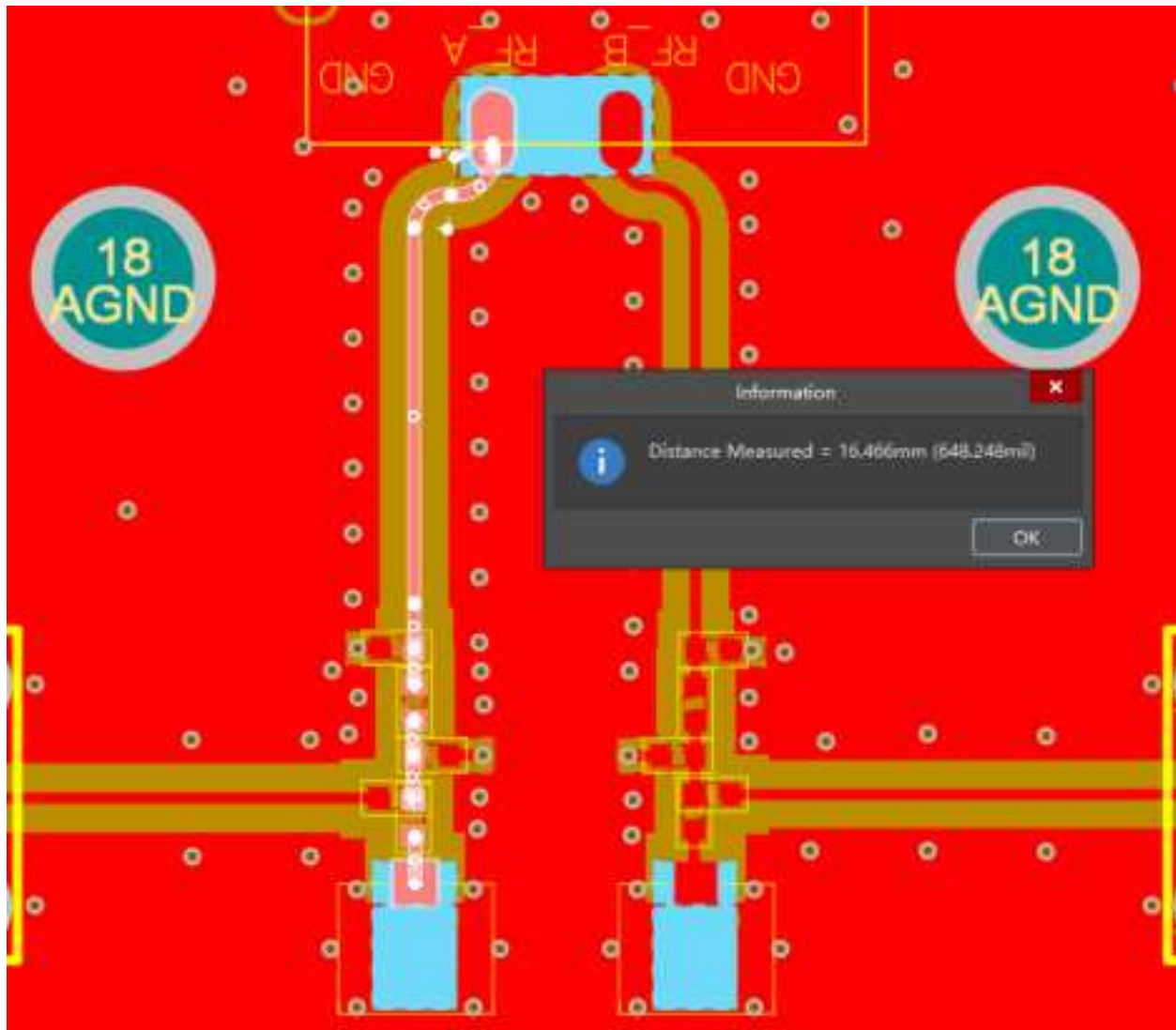


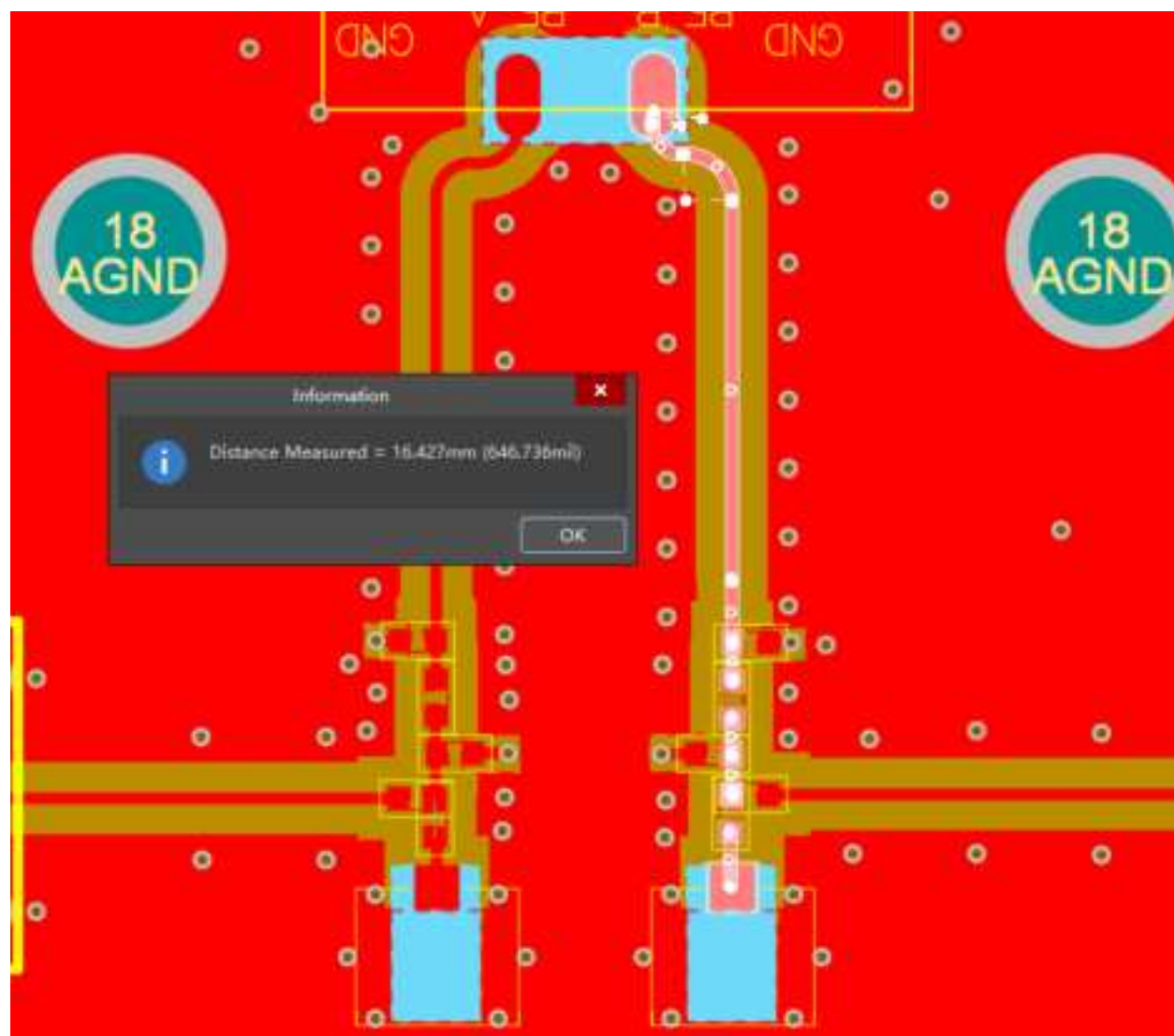
## User manual Supplementary information

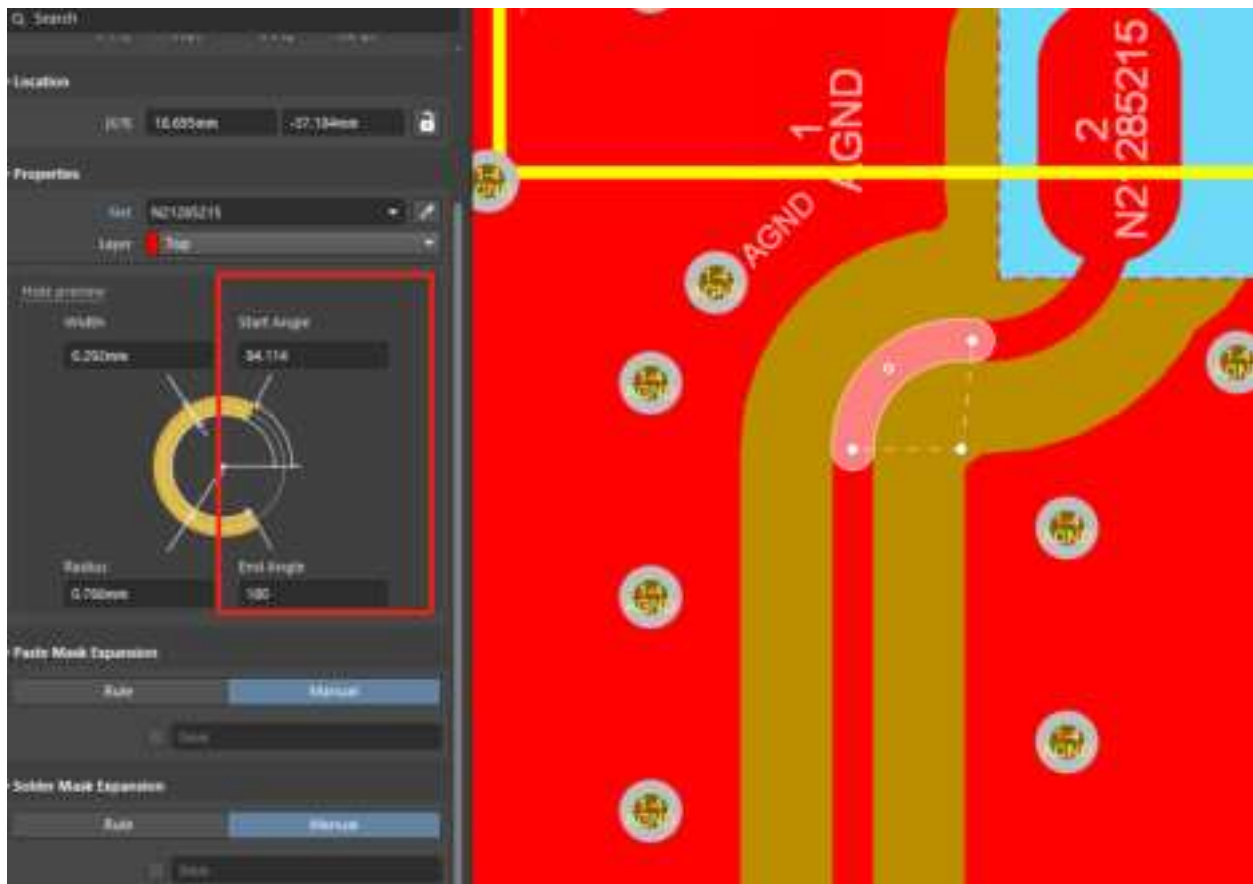
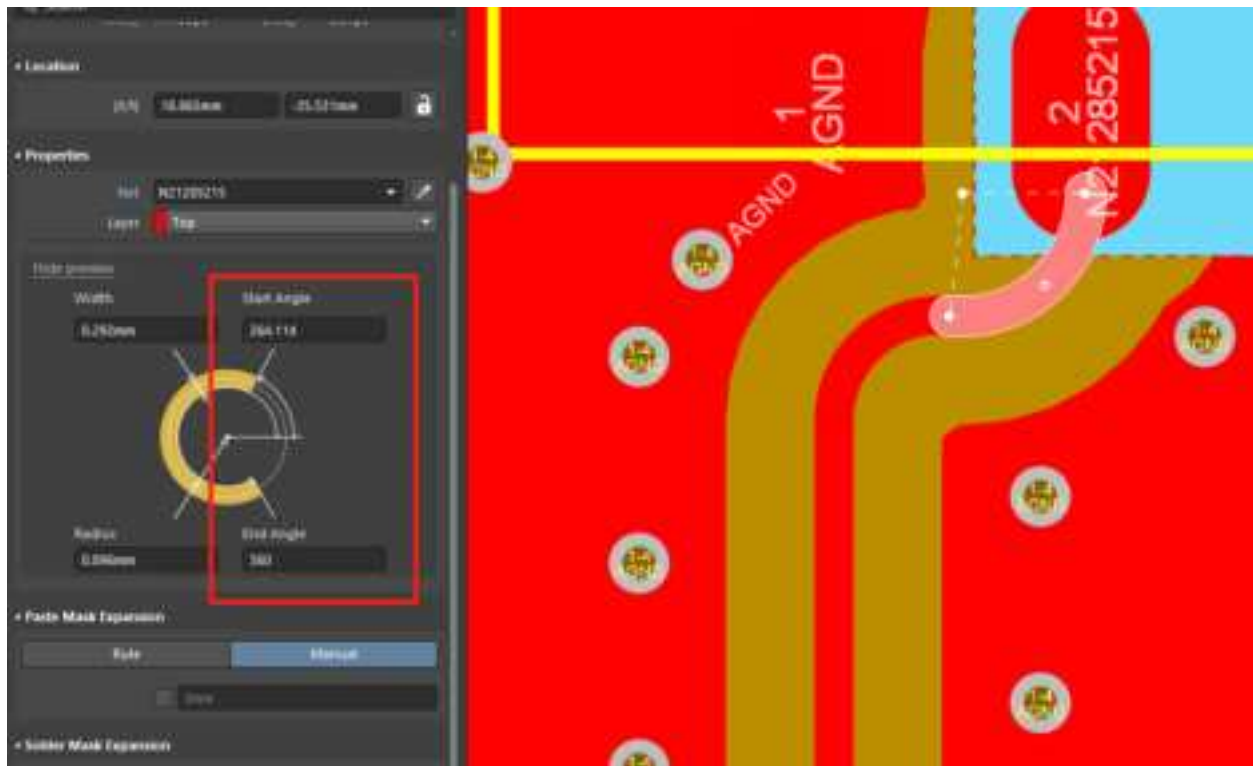
- a) Trace layout and dimensions including specific designs for each type:
1. Layout of trace design, parts, antenna, connectors, and isolation requirements:

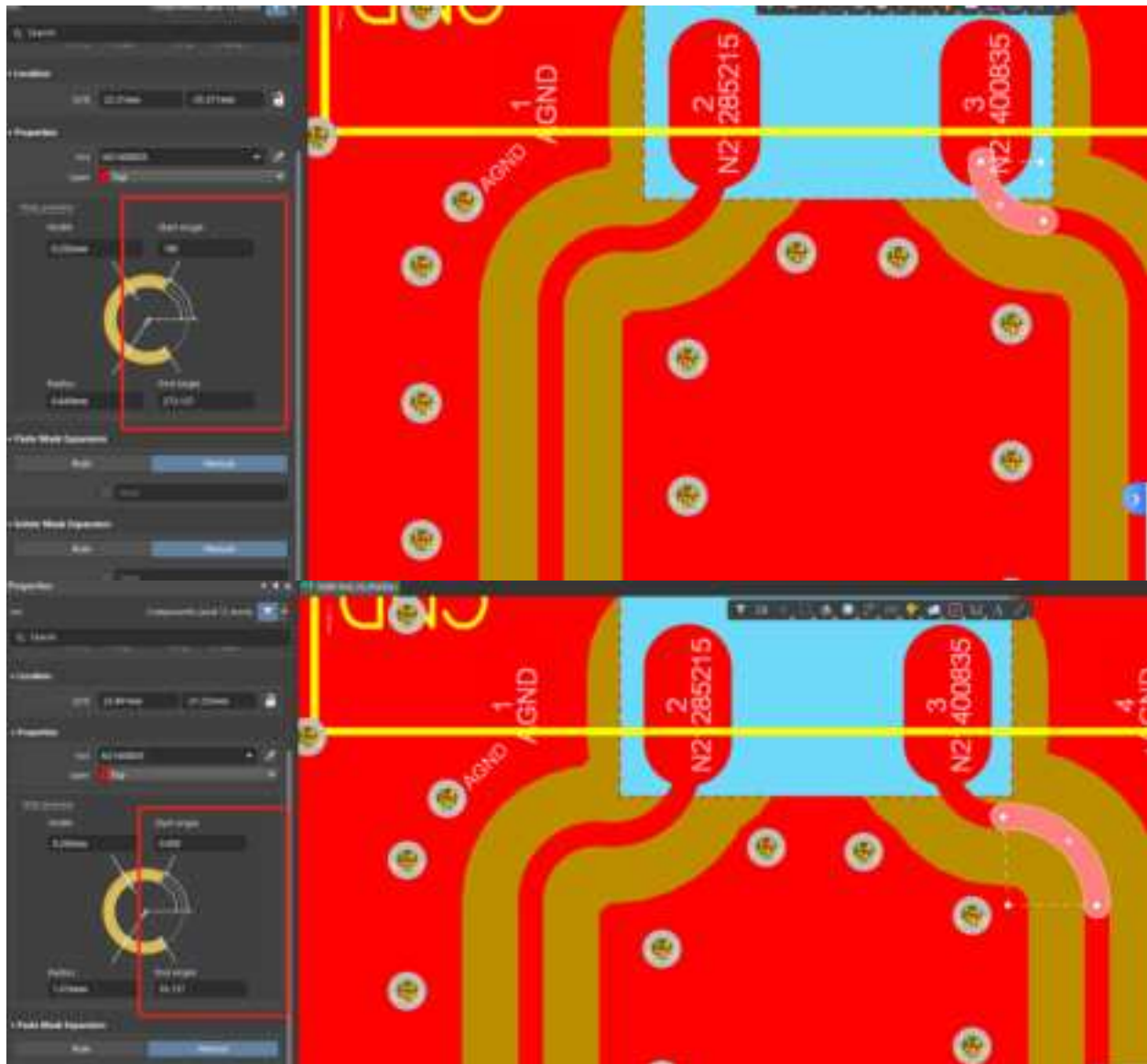


2. Boundary limits of size, thickness, length, width, shape(s), dielectric contain, and impedance must be clearly described for each type of antenna:
- PCB Antenna trace antenna Dimension:





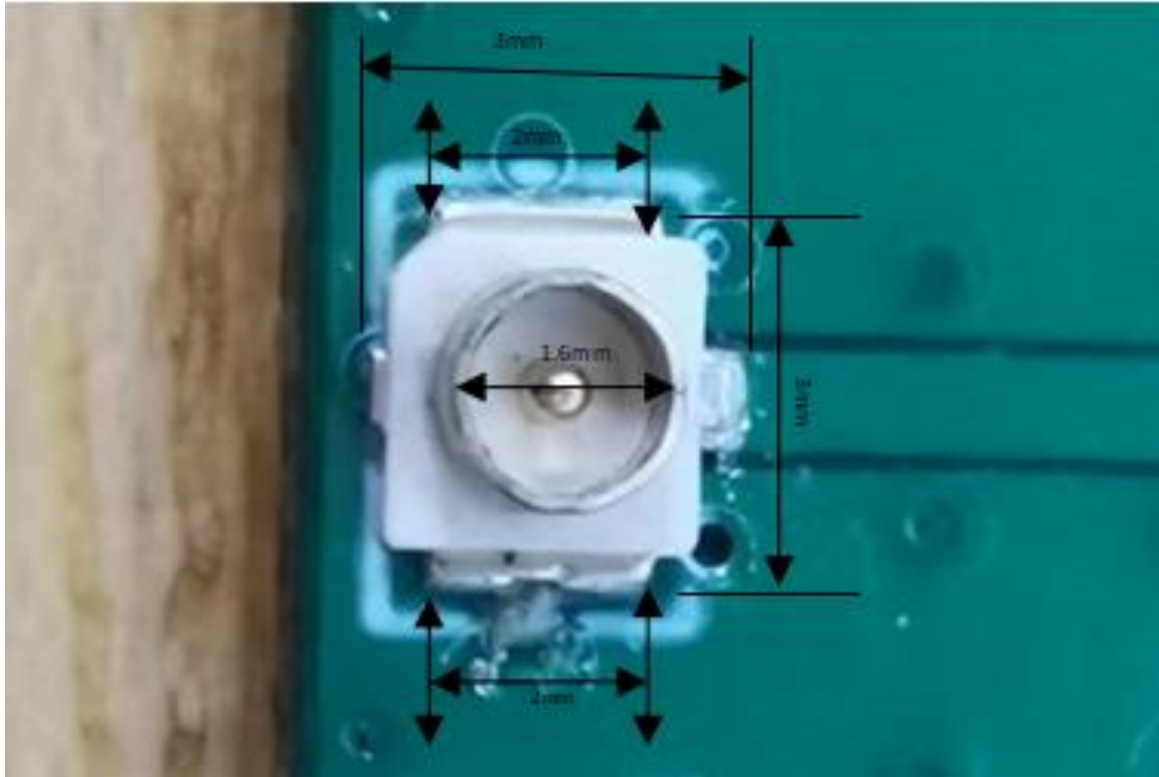




Note: 1. RF trace between module RF pinout to antenna width is 0.292mm.  
 2. RF trace between module and antenna impedance is 50ohm.

IPEX connector information:  
 Size:





Connector 1	IPEX	Male pin	50Ω	Surface mount	varies
-------------	------	----------	-----	---------------	--------

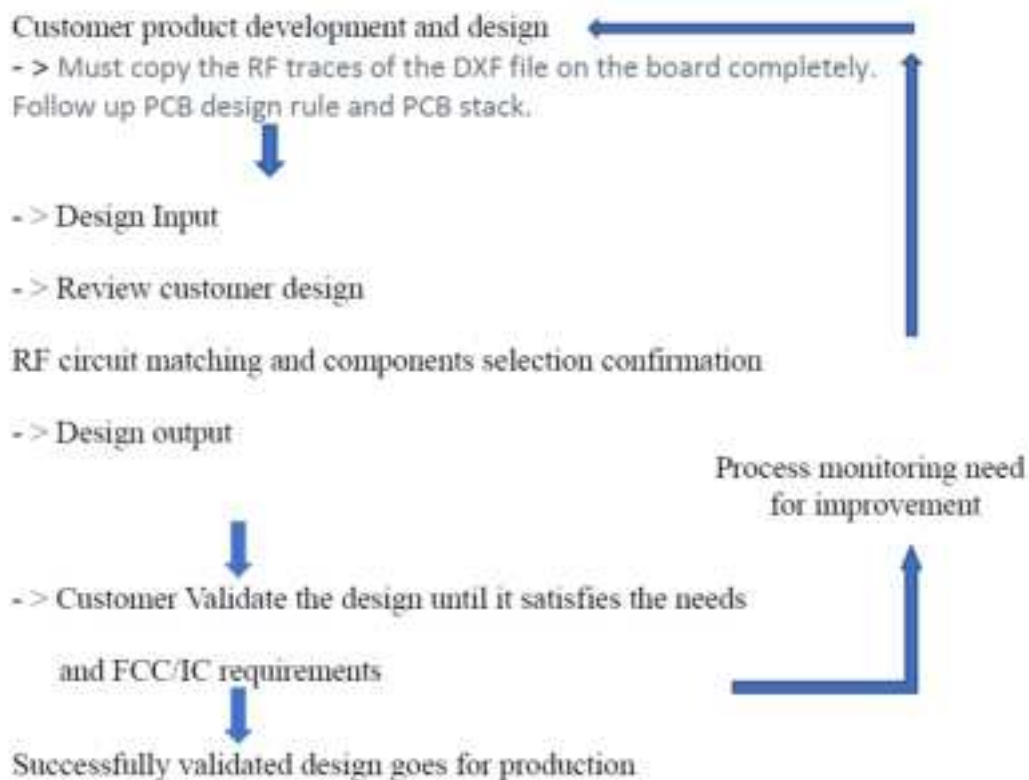
b) Appropriate parts of manufacturers and specifications:

Information about devices on RF lines:

Parts list	Parts number	Size	Manufacturer
Tuning 1/0Ω	/	0201	varies

If customers completely refer to our antenna design for their own design, the antenna performance should also be the same as ours.

C) Test procedures and design verifications:



d) Production test procedures for ensuring compliance

