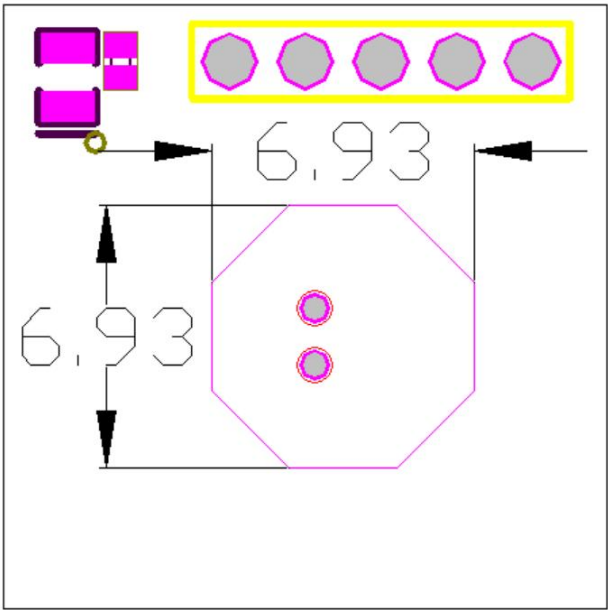


# Antenna Specifications

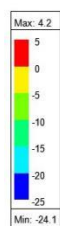
Design Specifications	Typical
Antenna Type*	Patch
Working Frequency	10GHz
Antenna Gain	≤ 3 dBi
Antenna Efficiency	≥ 30%
VSWR	≤ 2
Impedance	50 ohm
Overall Dimensions*	6.93mm * 6.93mm

- Schematic

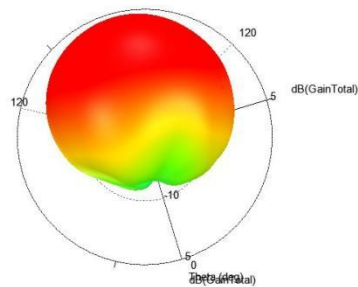
背视图



● 3D Antenna Gain



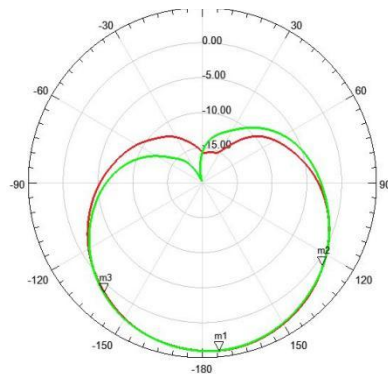
Gain Plot 2



ANSYS

● 2D Antenna Gain

mm	136.50000	138.00000	139.50000
m3	-136.50000	-138.00000	1.0478



dB(GainTotal)
HFSS Setup 1: Last Adaptive
Freq=10.525GHz Phi=0deg
dB(GainTotal)
HFSS Setup 1: Last Adaptive
Freq=10.525GHz Phi=90deg