

1. Antenna Description:

Antenna type	PIFA Antenna
Model	A1-2.4G
Frequency range	2400-2500MHz
Manufacturer	Shenzhen kehuitong Technology Co., Ltd
ANT Peak Gain	1.18 dBi

2. Antenna Photo:

Length :25.06mm
Width:8.75mm



3. Test Equipment & Conditions

3.1 Test instrument

VSWR is tested using Agilent E5071B connected to a hand mechanism, and the status is free space.

3.2 Test environment and methods

Dark room specifications: ETS-743

TD-SCDMA test equipment: StarPoint SP6010/Agilent 8960

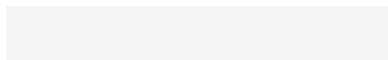
LTE-TDD/FDD-SCDMA test equipment: StarPoint SP8011/CMW500

WCDMA/GSM/CDMA test equipment: Agilent 8960

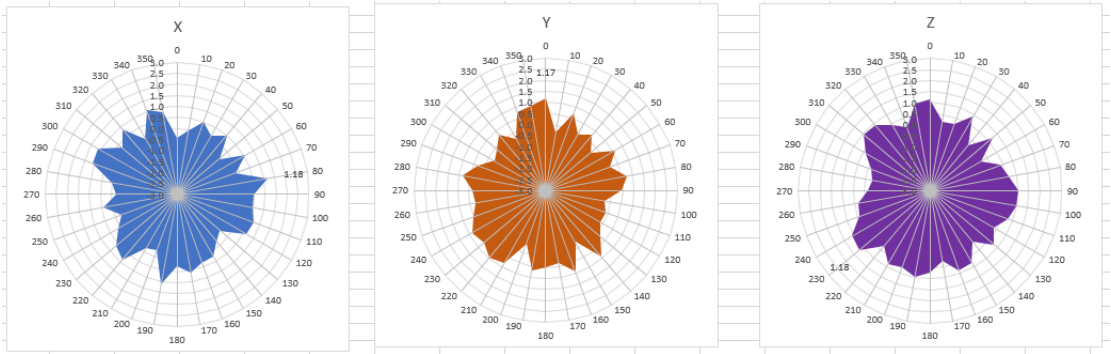
Passive efficiency testing equipment: Agilent Technologies E5071B



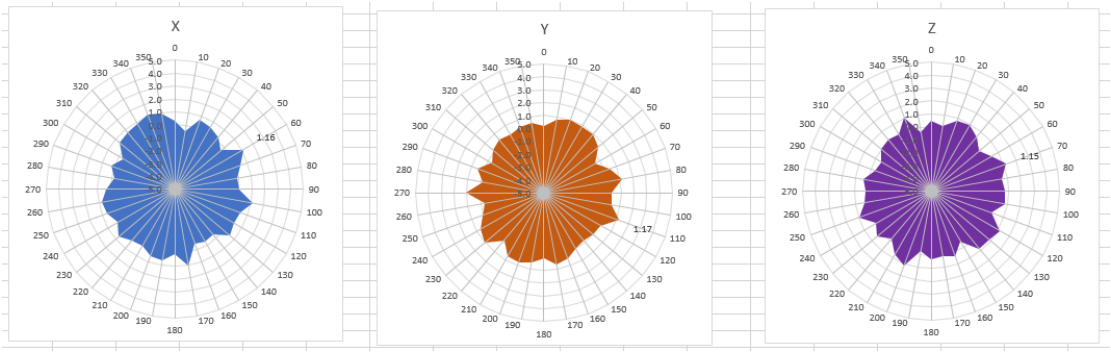
4 . Antenna Radiation Pattern



2400MHz



2450MHz



2500MHz

