




# APPROVAL SHEET

## 承认书

CUSTOMER NAME Customer's name	The same is digital	
CUSTOMER P/N Customer material number		
PART NAME Article Name	2.4G/5G Metal built-in antenna	
P/N Expect Howl	YJC-6N000-B485.	
. APPROVAL REV. Printing block Come next in order	A0.	
DELIVERY DATE Sample delivery date	2023. Year12Moon08Sun	
PREPARED BY Bear Do	Yin Feijie	
. CHECKED BY Examine Stone	 Fang Wenfeng	
APPROVED BY Stone Standard	Be like Milky Way	
Customer Approved Visitor Door Bear Recognize		
Prepared By Bear Do	Checked By Examine Stone	Approved by Stone Standard

--	--	--

Headquarters Address: Youmagang Road, Matian Street, Guangming District, Shenzhen11No. Hongyu Guangming Valley.CentigradeBuilding Dongguan  
Branch: Yinhe Third Road, Shishuikou, Qiaotou Town, Dongguan  
City2Hangzhou Office of Yingjiachuang Industrial Park: Internet of Things Street, Binjiang District, Hangzhou369No. Dahua Jianghong  
International Innovation ParkB.Ridge pole212 Mianyang Office: Mianxing East Road, High-tech Zone, Mianyang City, Sichuan Province35No. Wanxian  
High-tech International4F-34.Howl

Telephone number:0755-27810060 Fax:0755-27810057

Website:[Http://www.szsyjc.com](http://www.szsyjc.com)



Shenzhen Yingjiachuang Electronic Technology Co., Ltd.

Http://www.szsyjc.com  
Catalogue

.1, Cover....1

2, Catalogue...2

Three  
Resume.. . . . . Three  
,

4, Antenna floor plan...4

5, Antenna technical parameters and environmental performance test...5

6, The physical map of the antenna and the location map attached to the antenna...6

7, Antenna performance test chart...6

8, 2D.3D. (2.4G/5G) Test data...7-9

9, OTA.Active test data statistics....Ten

.Ten, ROHS..Material control report...11

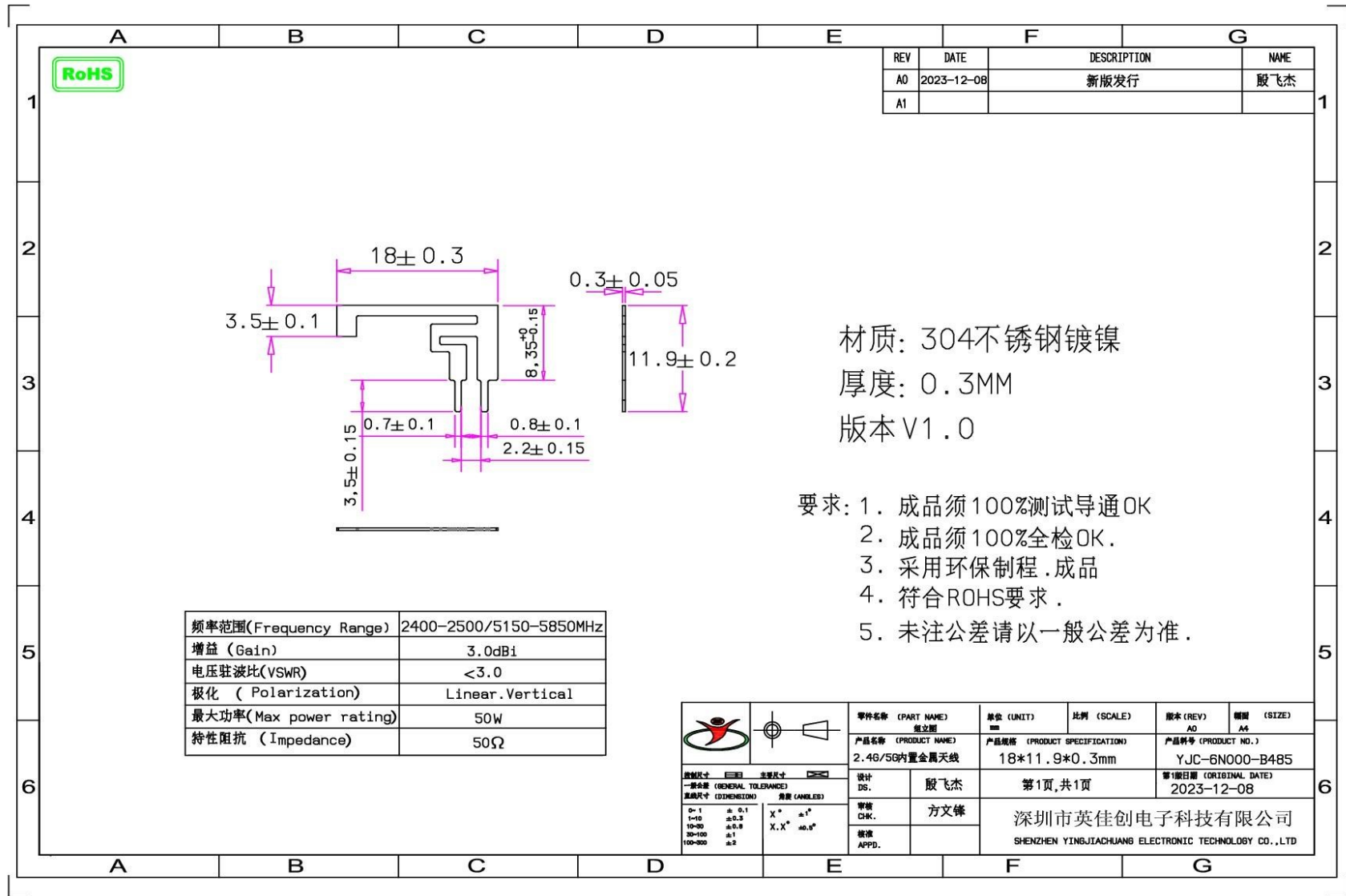
Resume:

Edition	Change content and reasons for change	Date	Circulate
A0.	The first edition is released	2023 .Year 12 Moon 08 Sun	






Antenna floor





Antenna technical parameters and environmental test:

Electrical technical parameters			
Lightning Nature Nai Finger Treetop		Electrical specifications	
Frequency range	2400-2500/5150-5850 MHz	Frequency Range	2400-2500/5150-5850 MHz
Voltage standing wave ratio	<3.0	VSWR.	<3.0
Input impedance	50 Ω	Input Impedance	50 Ω
Directions	Omni-oriented	Direction.	All
Increase	3.0dBi	Gain	3.0dBi
Trigger mechanism Shackles Finger Treetop		.Mechanical Specifications	
Wire material	304Stainless steel	Wire material.	304 stainless steel
Interface form	OP.	Input connector.	OP.
Working temperature	-20℃~+70℃	Working temperature	-20℃~+70℃
Working humidity	20~80 percent	Working humidity	20~80 percent

Environmental performance test:

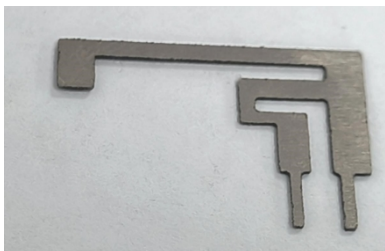
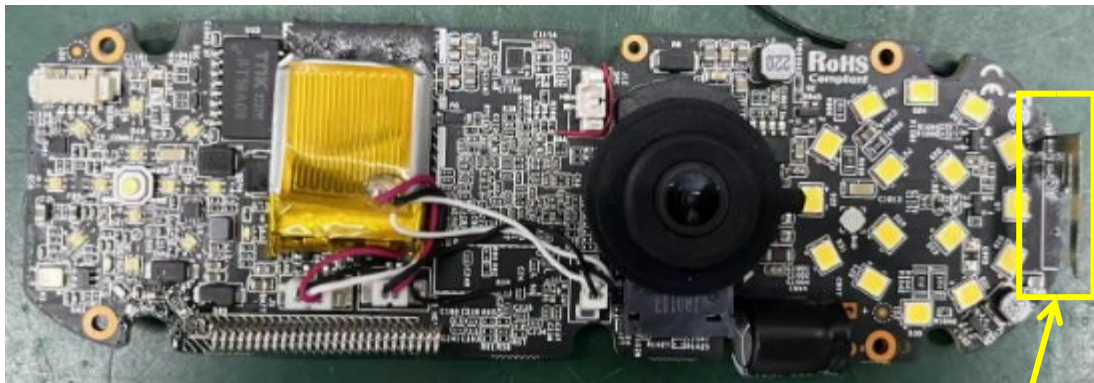
Project	Test conditions	Specifications
Storage environment	.The test temperature, humidity and air pressure without specifying are as follows: 1. The temperature is-20℃~+70℃ Two.The relative humidity is45% to 85% 3.The air pressure is86kpa-106kpa	The electrical and mechanical properties are normal.
High and low temperature test	At70℃.Give-20℃Carry out between5Sub-cycle, and then under normal conditions 1-2 hours, check the appearance quality.	The size should meet the requirements and meet the



		mechanical and electrical properties.
Constant humidity and heat resistance test	Relative humidity $95\pm 3\%$ , test temperature: $40^{\circ}\text{C}$ . Last 2 hours After the action, after the test product is taken out 5 minutes The electrical performance is measured inside, and the test product is under normal conditions. 1-2 hours, check the appearance quality	The size should meet the requirements and meet the mechanical and electrical properties.
Vibration test	Vibration frequency range 10-55HZ, displacement amplitude: 0.35 MM, acceleration amplitude: 50.0 M/S, the number of sweep cycles: 30 Come next in order	The electrical and mechanical properties are normal.
Drop test	1M The high altitude falls freely in the direction of the axes perpendicular to each other. Three Come next in order	The electrical and mechanical properties are normal.



Aerial physical drawings and



Antenna attached

Antenna performance





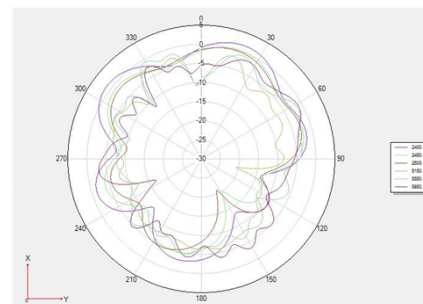
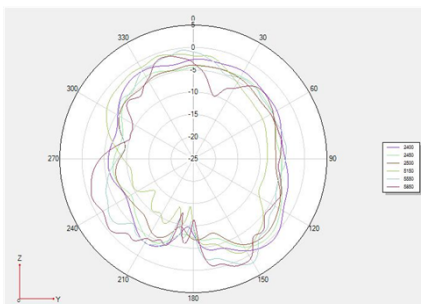
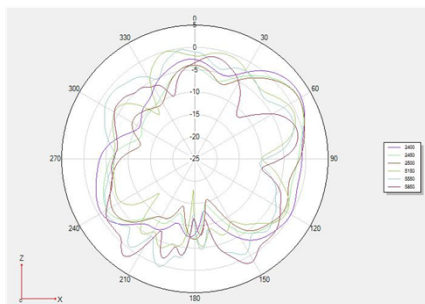
## 2D., 3D. Test data(2.4G/5G):

Frequency	Efficiency (%)	Gain. (dBi)
2400 MHz	53.02	2.82
2410 MHz	55.67	2.34
2420 MHz	55.81	2.59
2430 MHz	56.24	2.81
2440 MHz	56.43	2
2450 MHz	56.38	2.27
2460 MHz	55.98	2.04
2470 MHz	53.15	2.51
2480 MHz	52.72	2.13
2490 MHz	52.24	2.29
2500 MHz	51.32	2.14
5150 MHz	51.5	Two.86
5250 MHz	54.7	2.45
5350 MHz	56.49	2.73
5450 MHz	52.97	2.51
5550 MHz	52.55	2.52
5650 MHz	52.24	2.38
. 5, 750 MHz	52.13	2.56
5, 850 MHz	51.83	2.98

Phi 0 2D Picture

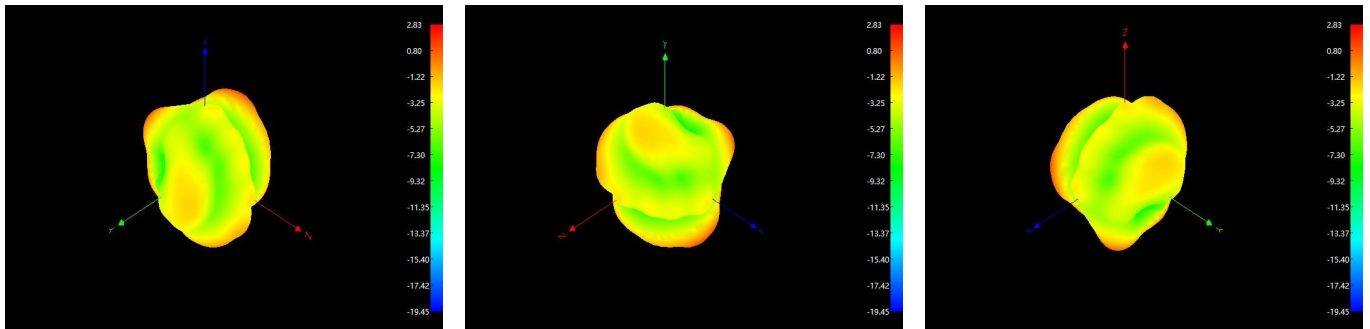
Phi 90 2D. Picture

Theta 90 2D. Picture

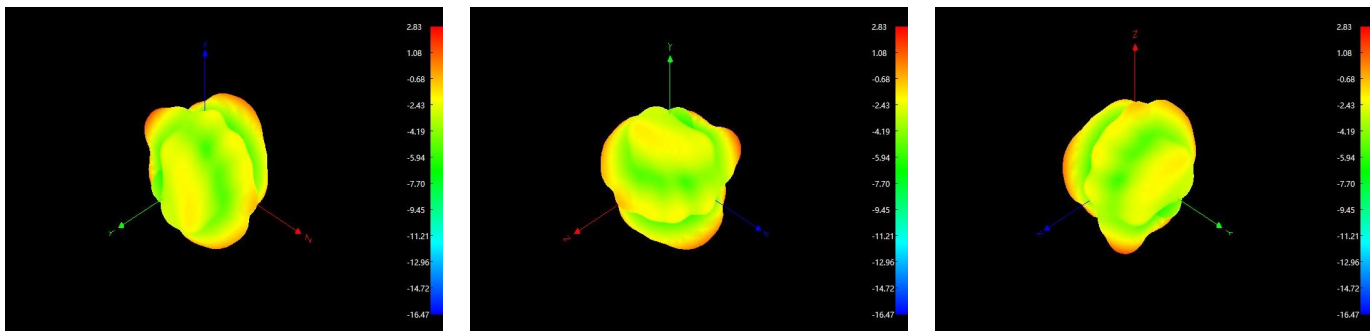




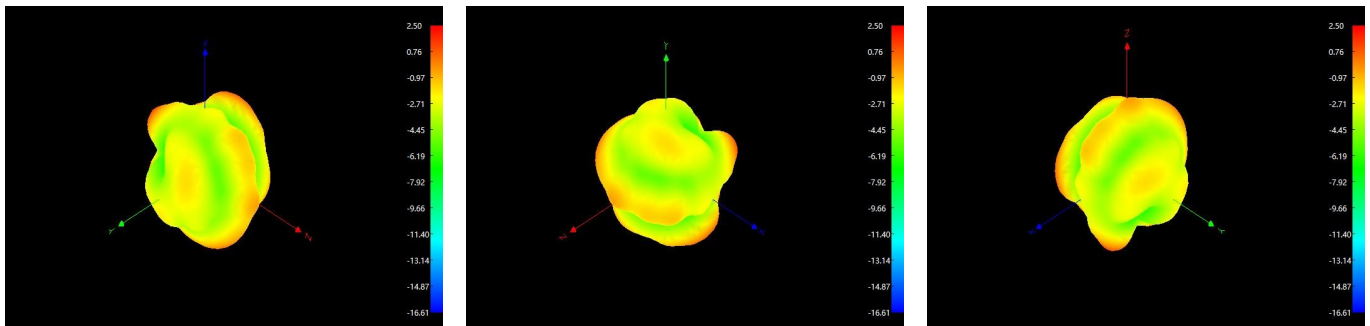
### 3D 2400.



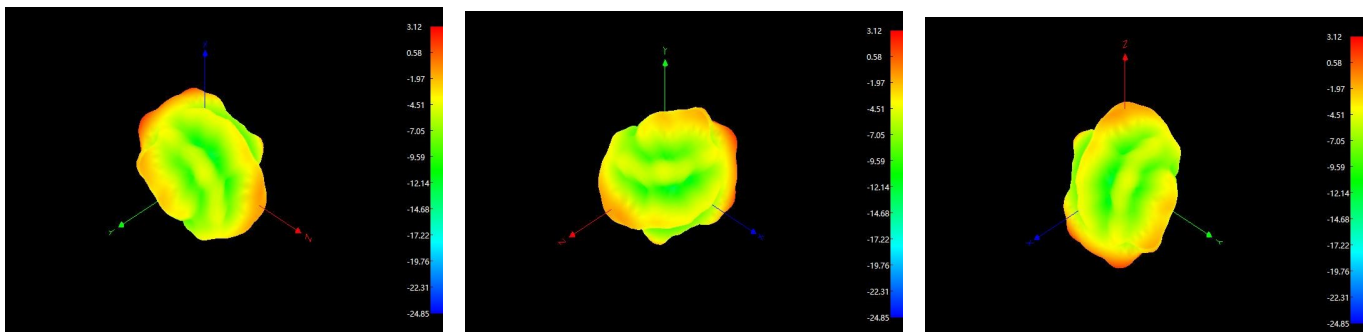
### 3D 2450.



### 3D 2500

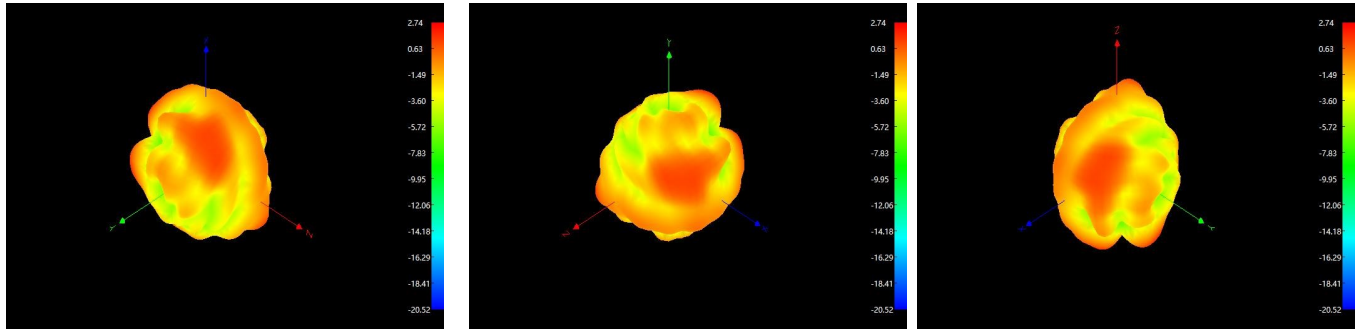


### 3D 5150.

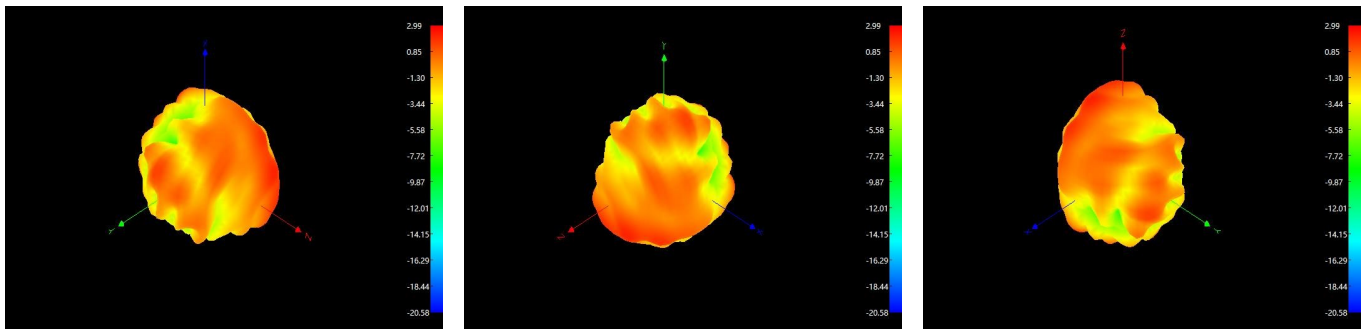




### 3D5550.



### 3D5850.



OTA.Active test data statistics:

Item	Measurement.	Band.	Channel.	Frequency	Total
.1	TRP.	WIFI_B (11M)	.1	2412	.16.43
2	TRP.	WIFI_B (11M)	6	2437	16.33
Three	TRP.	WIFI_B (11M)	11	2462	16.12
4	TIS (EIRP)	WIFI_B (11M)	.1	2412	-65.3
5	TIS (EIRP)	WIFI_B (11M)	6	2437	-65.04
6	TIS (EIRP)	WIFI_B (11M)	11	2462	-62.41
7	TRP.	WIFI_A (54M)	36	5180	17.38
8	TRP.	WIFI_A (54M)	149	5745	17.12
9	TRP.	WIFI_A (54M)	.165	5825	17.37
.Ten	TIS (EIRP)	WIFI_A (54M)	36	5180	-70.45



Shenzhen Yingjiachuang Electronic Technology Co., Ltd.

<http://www.szsyjc.com>

---

11	TIS (EIRP)	WIFI_A (54M)	149	5745	-71.88
12	TIS (EIRP)	WIFI_A (54M)	.165	5825	-71.6



Shenzhen Yingjiachuang Electronic Technology Co., Ltd.

[Http://www.szsyjc.com](http://www.szsyjc.com)

ROHS.Material control report											
I hereby certify that the zero components delivered to your company, the raw materials used in auxiliary materials, and the additives in the production project are all in accordance with RoHS.Environmental protection requirements of the Directive on Restricting the Use of Hazardous Substances . (RoHS.Order 2011/65/EC)											
The report on the components of raw materials used in components, auxiliary materials, packaging materials and additives used in the production process is as follows:											
Name of constituent materials Component /Part Name	Component s Material. Composition.	Internet content provider Report number .ICP report #	Testing institut ion Test Organ.	Test time Test date	Have Harm Thing Nature Hold in the mouth Measure(Ppm)						Is it qualified ?.? PASS?
					Compa ct disc	Pb.	Hg.	Cr. 6+	PBB.	PBDE .	PASS
Copper parts	304Stainl ess steel	A2230142930101003.	SGS.	04/23/06	ND.	ND.	ND.	ND.	ND.	ND.	PASS