

材质:铜版纸
尺寸:240*210mm

Instructions

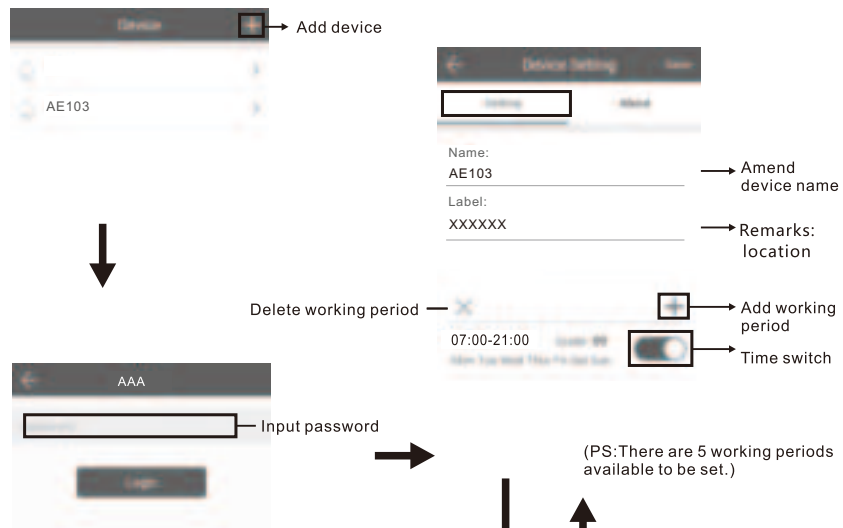
Where to get the app:

Please search "scent marketing" in Google play or App store and you will find it.

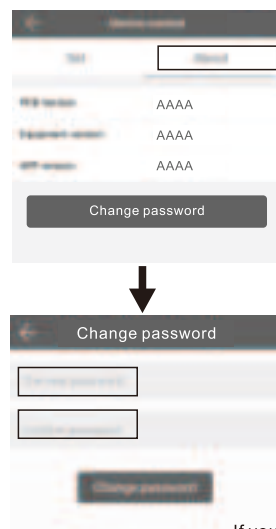


Note:

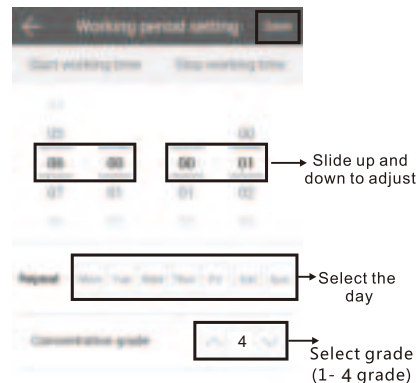
1. Please make sure that the Bluetooth function is turned on;
2. Please make sure that the location function of the mobile phone is turned on.



Amend password

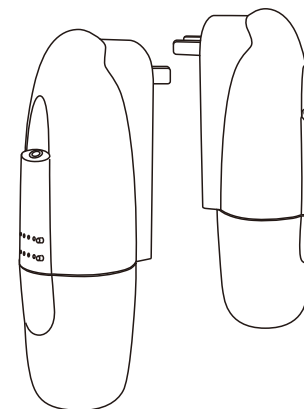


If you forget the password, please press the reset button to restore the factory settings. The factory settings password is 8888.



PRODUCT MANUAL

SCENT MARKETING



103-APP

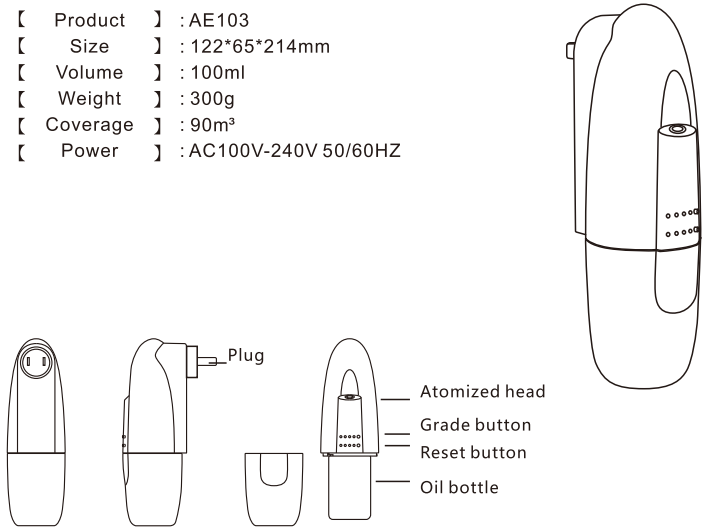
Troubleshooting

Before having the machine repaired, please try to diagnose the problem first with the bellow instructions

Symptom	Remedy
Does not diffuse	<ul style="list-style-type: none">- Whether the machine is in "not working period". If yes, it won't spray.- Check whether the air pump is damaged. If yes, replace it with a new one.
Spray little	<ul style="list-style-type: none">- Check whether the gasket is damaged or loose. Please adjust it or replace it with a new one.- Check whether the atomized core is plugged; clear it with alcohol or replace it with a new one
Oil spill	<ul style="list-style-type: none">- Check whether the atomized head is damaged
Oil overflow	<ul style="list-style-type: none">- Check whether the oil bottle is loose, please install it correctly- Check whether the gasket of the atomized head is damaged; if yes, please replace it with another one.- Please keep the machine vertical; Tilt or lie flatly will cause the oil overflow

Specification

- [Product] : AE103
- [Size] : 122*65*214mm
- [Volume] : 100ml
- [Weight] : 300g
- [Coverage] : 90m³
- [Power] : AC100V-240V 50/60HZ



Warning

- 1. Please keep the machine vertical. Tilt or lie flatly may cause the oil overflow. The efficiency of the machine may be affected.
- 2. Shall not modify, disassemble or repair the machine. If any failure happens to the machine, please contact our technical personnel.



Equipment cleaning

The machine need to be cleaned when below situation happens:

- 1. You're about to change another kind of essential oils
- 2. The atomization volume goes weak

Cleaning steps:

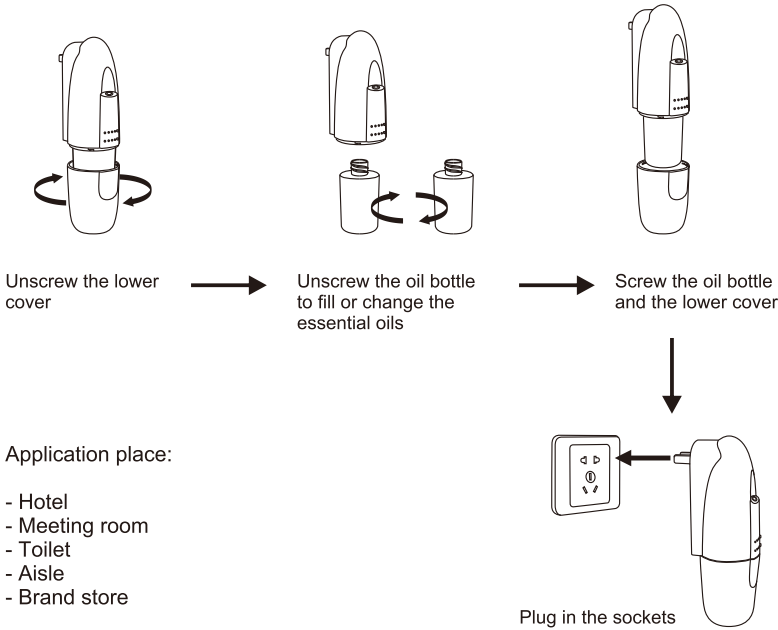
- 1. Unscrew the lower cover and take out the oil bottle
- 2. Find a larger container and fill the industrial alcohol up. Then soak the bottle for 5-10 minutes.
- 3. Airing the bottle.

Concentration and consumption

Grade	G1	G2	G3	G4
Pausing time(s)	285s	135s	85s	60s
Consumption(ml/hr)	0.07	0.15	0.23	0.30

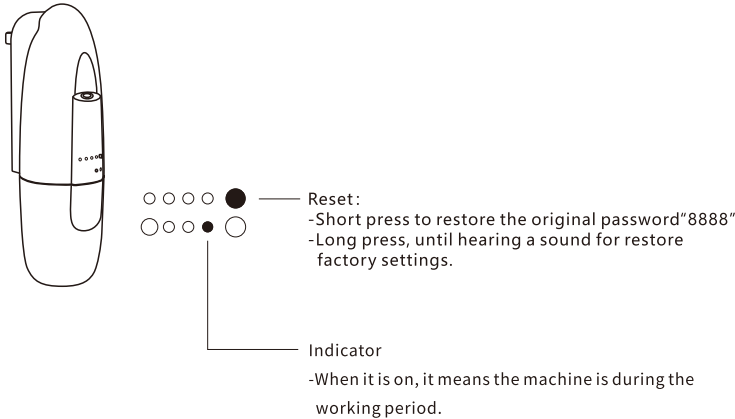
- Notes: 1.The working time above of each grade is 15s.
2.Different grade and oil may be with different consumption.

Installation method



Operating instructions

APP version: Controlled by APP, more convenient and intelligent



FCC Statement

This equipment has been tested and found to comply with the limits for a Class B digital device, pursuant to part 15 of the FCC Rules. These limits are designed to provide reasonable protection against harmful interference in a residential installation. This equipment generates, uses and can radiate radio frequency energy and, if not installed and used in accordance with the instructions, may cause harmful interference to radio communications. However, there is no guarantee that interference will not occur in a particular installation. If this equipment does cause harmful interference to radio or television reception, which can be determined by turning the equipment off and on, the user is encouraged to try to correct the interference by one or more of the following measures:

- Reorient or relocate the receiving antenna.
- Increase the separation between the equipment and receiver.
- Connect the equipment into an outlet on a circuit different from that to which the receiver is connected.
- Consult the dealer or an experienced radio/TV technician for help.

Caution: Any changes or modifications to this device not explicitly approved by manufacturer could void your authority to operate this equipment.

This device complies with part 15 of the FCC Rules. Operation is subject to the following two conditions: (1) This device may not cause harmful interference, and (2) this device must accept any interference received, including interference that may cause undesired operation.

RF Exposure Information

This equipment complies with FCC radiation exposure limits set forth for an uncontrolled environment. This equipment should be installed and operated with minimum distance 20cm between the radiator and your body.