

Smart Ambiance Light-User Instructions

SAL

It's an all-in-one smart home product

1. Classic bedside lamp
2. Colorful ambience lights
3. Interactive friendship lamp

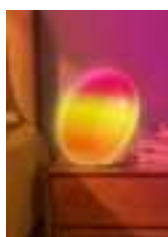
Product

Description

n:

Mainly can be used for atmosphere lighting atmosphere, wake up with sleep, night light lighting, wall lighting background, specific scene lighting entertainment
Products can achieve : 16million infinite color change, adjustable brightness, dazzling streamer effect, minimalist button control +APP control +voice control, timing switch machine, remote interaction, etc.

Appearance Chart



Place mode: Can be placed oblique, can be placed flat, here to pay attention to, stand when must be stable;

Functional parameters

Lantern mode: Cold white / red / light green / ice blue / purple / warm yellow / pink /(refer to Philips lamp sample, large probability one default color, other colors need to be adjusted in APP)

Colour Mode: Sunrise wake-up, energy injection, romantic breathing, brilliant (monochrome color cycle changes), sunset with sleep, candlelight flickering, meditation moment(reference Momax atmosphere lamp, actual lamp effect should be combined with modeling adjustment)

Friendship interaction: One pair of lights with background binding
communication synchronization (TBD- need to be confirmed with the TY)

RGB the number of lights :37*

Color temperature range: 2000-6000 K white light (this
parameter should be cancelled later) brightness

adjustment: 3%-100%

Maximum brightness: 150-300 lux

Networking

Reset Distribution Equipment power failure 3-5 times, each interval of 5 S, to reset the distribution network information, into the distribution network state

Distribution network indication Local flicker (top or bottom, local bead light out to form a flicker effect
(color, position and number of lights to be actually debugged), AP mode and EZ mode have a corresponding flicker speed;

Key: A rotating key that can be clicked and rotated;

Click: If the light is not on, click turn on the light; if the light is on, click cycle switch mode (color
light-color 1(wake up at sunrise)-color 2
(Injection of energy) Colorful Light 9)

Double click: synchronize current lamp effect and brightness to

Key control +APP control +APPALEXA voice control

Power off memory:..... Switch color lights, change color
lights brightness; switch color lights 1/2.....Colourful Lanterns 9

App function defines the mode / color / brightness of the lamp:

Lanterns: Cold white / red / light green / ice blue / purple / warm yellow / pink / custom (16 million Wuji
discoloration editor)

Sunrise wake-up, energy injection, romantic breathing, brilliant (monochrome color light cycle
changes), sunset with sleep, candlelight flickering, meditation time, music synchronization...

Dazzling lights: Adjust or synchronize the
switch, light efficiency and brightness alarm clock of
the end lamp: 3%-100%

Parameter definitions

Size: 180 diameter ,89 thickness

Weight: TBD

Color: White

Adapter: Input AC110-240V 5V2A charging head

with DC cable:DC plug size : OD 3.5mm and ID

1.35mm operating temperature :10 W (5V2A)

Storage

temperature :1.8 A-2A

Packing list: WIFI 2.4G

Authentication: keystroke control, APP control, voice control (access to third party intelligent speakers)

FCC Statements:

NOTE: This equipment has been tested and found to comply with the limits for a Class B digital device, pursuant to part 15 of the FCC Rules. These limits are designed to provide reasonable protection against harmful interference in a residential installation. This equipment generates uses and can radiate radio frequency energy and, if not installed and used in accordance with the instructions, may cause harmful interference to radio communications. However, there is no guarantee that interference will not occur in a particular installation. If this equipment does cause harmful interference to radio or television reception, which can be determined by turning the equipment off and on, the user is encouraged to try to correct the interference by one or more of the following measures:

- Reorient or relocate the receiving antenna.
- Increase the separation between the equipment and receiver.
- Connect the equipment into an outlet on a circuit different from that to which the receiver is connected.
- Consult the dealer or an experienced radio/TV technician for help

Changes or modifications not expressly approved by the party responsible for compliance could void the user's authority to operate the equipment.

This device complies with Part 15 of the FCC Rules. Operation is subject to the following two conditions:

(1) this device may not cause harmful interference, and (2) this device must accept any interference received, including interference that may cause undesired operation.

RF Exposure Warning Statements:

This equipment complies with FCC radiation exposure limits set forth for an uncontrolled environment. This equipment shall be installed and operated with minimum distance 20cm between the radiator & body.