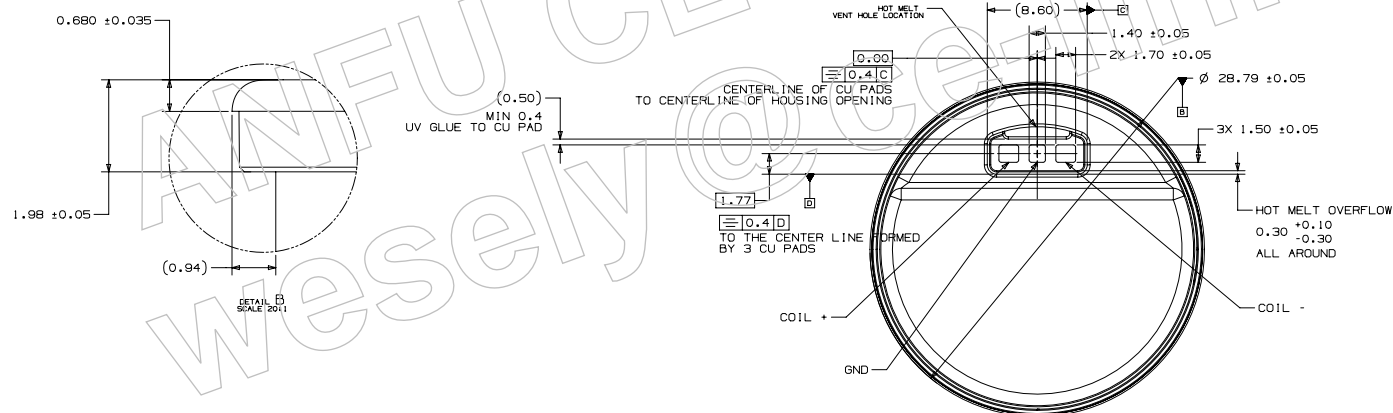
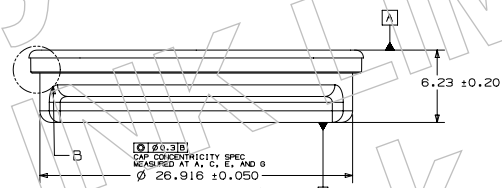
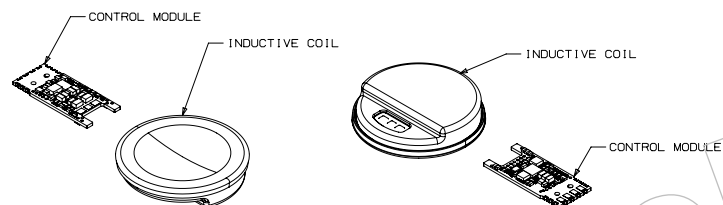




71.6 Watch Fast Charger Inductive Coil Module Dimensions

REV	ECN#	DESCRIPTION OF REVISION
-----	------	-------------------------

NOTES: (UNLESS OTHERWISE SPECIFIED)

1. NO ELECTRICAL SHORTS BETWEEN GND PAD AND SURROUNDING METAL.
2. THE TOP SURFACE OF THE INDUCTIVE COIL ASSEMBLY (DATUM A) SHALL BE 0.40MM \pm 0.25MM PROUD OF THE SURROUNDING SURFACE.
3. COMPONENTS AND TERMINATIONS ON THE CONTROL MODULE SHALL BE FULLY ENCAPSULATED WITH A RIGID GLUE TO PROTECT COMPONENTS. LOCTITE UV906IF OR EQUIVALENT GLUE RECOMMENDED
4. THE CONTROL MODULE SHOULD BE CONTAINED WITHIN A SHEET METAL ENCLOSURE.
THERMAL PASTE SHOULD BE USED TO THERMALLY BRIDGE THE CONTROL MODULE TO THE THERMALLY CONDUCTIVE ENCLOSURE.
COLLITECH N-SIL 9516W THERMAL PASTE OR EQUIVALENT PASTE RECOMMENDED (THERMAL CONDUCTIVITY TARGET OF AT LEAST 1.5 W/mk).



METRIC		 Apple Inc.	
OWNER APPLE INC	DATE DATE	NOTICE OF PROPRIETARY PROPERTY: THE INFORMATION CONTAINED HEREIN IS THE PROPRIETARY PROPERTY OF APPLE INC. THE POSSESSOR AGREES TO THE FOLLOWING: (1) IT IS TO BE KEPT IN STRICTLY CONFIDENTIAL (2) IT IS TO BE RETURNED OR DESTROYED ON DEMAND (3) IT IS TO BE KEPT IN A SECURE PLACE (4) ALL RIGHTS RESERVED	
DESIGNER APPLE INC	DATE DATE	THE INFORMATION CONTAINED HEREIN IS THE PROPRIETARY PROPERTY OF APPLE INC. THE POSSESSOR AGREES TO THE FOLLOWING: (1) IT IS TO BE KEPT IN STRICTLY CONFIDENTIAL (2) IT IS TO BE RETURNED OR DESTROYED ON DEMAND (3) IT IS TO BE KEPT IN A SECURE PLACE (4) ALL RIGHTS RESERVED	
DIMENSIONS ARE IN MILLIMETERS TOLERANCES		TITLE APPLE WATCH FAST CHARGER MODULE	
DO NOT SCALE DRAWINGS		DRAWING NUMBER 01	
	SIZE D	SCALE NONE	REV. 1 OF 2

NX GENERATED