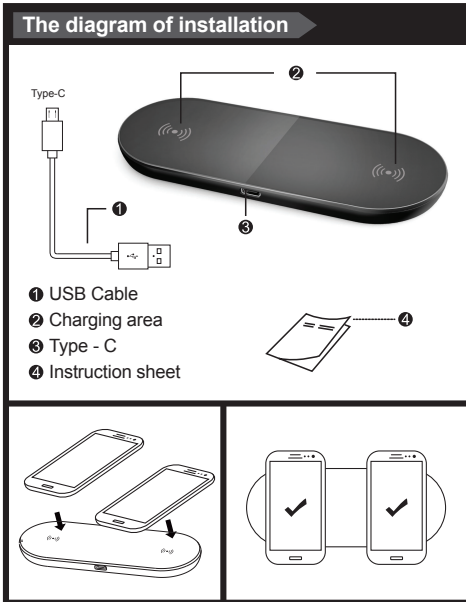


Wireless Charger Instruction Sheet



Wireless Charger's Charging Method

- 1) Connect the wireless charging pad to a USB adapter with the integrated USB cable. Charging pad entering standby mode
- 2) Place one/two enabled device in the center area of the charging pad. Device will automatically begin to charge, charging begins.
- 3) Or/And insert type-C cable into your desired device port to charge through wire cable.

Note: To charge devices, use only the accessory cable or the cable included with your own device by the manufacturer.

Product specs:

Product model:

Main functions: dual wireless charging transmitter;

Standard version: WPC - 1.1;

Charging type: one-on-one charge corresponding area;

Input Specs: DC: 5V/3A;

Output Specs: 5V, 1000mA*2

Effective Distance: 4 to 6 MM;

Conversion efficiency: ≥70%;

Charging methods: induction model;

Working frequency: 11FF~~5~~ -205 kHz;

Accessories: USB cable; Wireless charging pad;

Packing box, and instruction sheet.

FCC Warning Statement :

Changes or modifications not expressly approved by the party responsible for compliance could void the user's authority to operate the equipment.

This equipment has been tested and found to comply with the limits for a Class B digital device, pursuant to Part 15 of the FCC Rules.

These limits are designed to provide reasonable protection against harmful interference in a residential installation. This equipment

generates uses and can radiate radio frequency energy and, if not installed and used in accordance with the instructions, may cause harmful interference to radio communications. However, there is no guarantee that interference will not occur in a particular installation.

If this equipment does cause harmful interference to radio or television reception, which can be determined by turning the equipment off and on, the user is encouraged to try to correct the interference by one or more of the following measures:

- Reorient or relocate the receiving antenna.
- Increase the separation between the equipment and receiver.
- Connect the equipment into an outlet on a circuit different from that to which the receiver is connected.
- Consult the dealer or an experienced radio/TV technician for help.