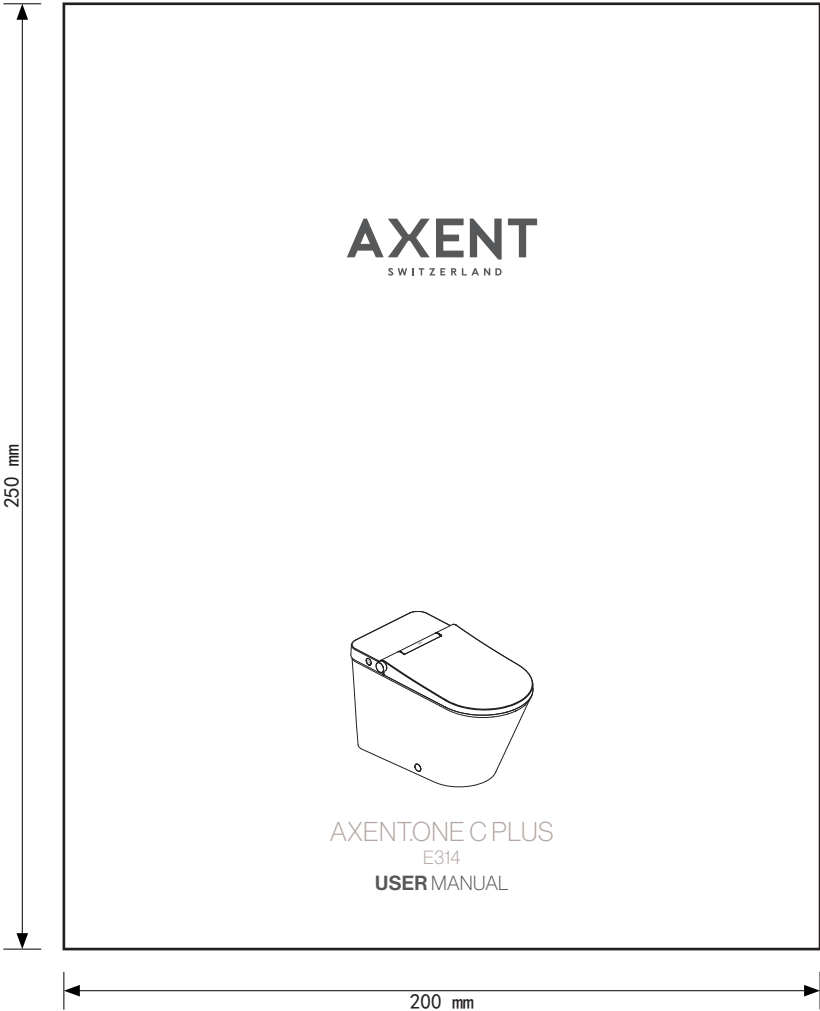



版本 REV.	设计 DESIGN	日期 DATE	变更内容 CONTENTS	标记 MARK	处数 QTY.
01	尹妮	20200623	新建		
02	尹妮	20200907	1. 封面增加“E314”字样 2. P4 增加骑马钉 3. P22 更新产品设备、名称及图例 4. P24 增加图例 1 和图例 2 的说明 5. P4 的更改说明		

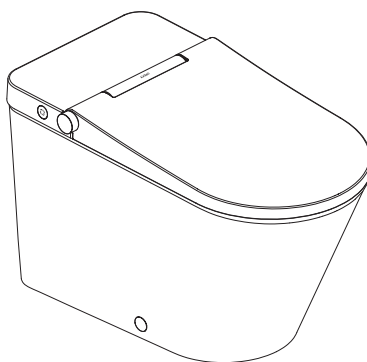


机型编号
TYPE
E314

技术要求

1. 印刷字体需清晰、均匀、平整、无重影；
2. 尺寸为 250×200mm，公差 ±1mm；
3. 装订方式：骑马钉；
4. 黑白印刷；
5. 所有材料满足欧盟包材指令和 RoHS 要求。

设计 DESIGN	尹妮	20200907	材料 MATERIAL	120g 双胶纸			名称 TITLE	操作说明书
审核 CHECK							编号 PART NO.	224000033800
工艺 PROCESS			图幅 SIZE	A4	比例 SCALE	1:2		
标准化 STANDARDIZE					单位 UNIT	mm	<div>AXENT</div> <div>XIAMEN AXENT CORPORATION LIMITED</div> <div>厦门优胜卫厨科技有限公司</div>	
批准 APPROVE			第 1 张 共 1 张 SHEET OF					



AXENT.ONE C PLUS
E314
USER MANUAL

THANK YOU

Thank you for selecting an AXENT Switzerland product. To ensure proper installation, please review these instructions carefully before use. Carefully unpack and examine the intelligent toilet before installation. For any questions, contact us at 1-800-769-4857. Thank you again for choosing AXENT.

BEFORE YOU BEGIN

CAUTION!

Risk of personal injury or product damage

Handle with care. Vitreous china can break or chip if handled carelessly.

All installation procedures should comply with applicable local plumbing and building codes.

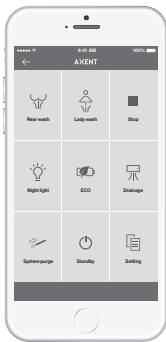
INSTALLATION BY A PROFESSIONAL, LICENSED PLUMBER OR CONTRACTOR IS HIGHLY RECOMMENDED.

USER MANUAL
AXENT.ONE C PLUS

Smartphone App	3
Safety	4
Introduction	7
Multi-function Dial	9
Remote Control	18
Maintenance	28
Troubleshooting	31
Technical Data	35
Guarantee	36

SMARTPHONE APP

CONNECT YOUR AXENT INTELLIGENT TOILET WITH OUR APP



The Axent Remote App can be used as an individualized remote control with the Axent One C Plus.



www.axentbath.us » Downloads

SAFETY

SAFETY SYMBOLS

The following symbols in the manual will highlight hazardous situations and their severities.



DANGER!

High Risk, Lethal Hazards, Severe Injuries



WARNING!

Medium Risk, Severe Injuries



CAUTION!

Low Risk, Minor Injuries



NOTE!

Damage to Property

NORMAL USAGE

The intelligent toilet's spray arm attachment should only be used for the rear wash and front wash cleaning functions. The product may also be used as a normal toilet seat. This product is meant for indoors usage only.

Any other usage will not be deemed as normal usage. AXENT undertakes no liability for abnormal usage.

AXENT is not liable or responsible for damage to other electronics connected to the same power line while the intelligent toilet is in use.

IMPORTANT SAFEGUARDS

READ ALL INSTRUCTIONS BEFORE USING

SAVE THESE INSTRUCTIONS

A copy of the instructions can also be downloaded from <https://axentbath.us>.

When using electrical products, especially when children are present, basic safety precautions should always be taken, including the following:



DANGER!

To reduce the risk of electrocution

Do not reach for any electrical components of the intelligent seat that have fallen into water. Unplug toilet immediately.

Unplug product if not in use for extended periods of time.

Do not use while wet after bathing.

Do not place or store product where it can fall or be pulled into a tub or sink.

Do not place or submerge the intelligent toilet or its components into water or other liquids.

SAFETY



WARNING!

To reduce the risk of burns, electrocution, fire, or injury to persons

Children or disabled persons may require supervision during use.

Use this product only for its intended use as described in this manual.
Do not use attachments not authorized by the manufacturer.

Never operate this product if it has a damaged cord or plug, if it is not working properly, if it has been dropped or damaged, or dropped into water. Return the product to a service center for examination and repair.

Keep the cord away from heated surfaces.

Do not block the air vents on this product. Do not place the toilet on or by objects such as long window curtains that could potentially obstruct the air vents during normal usage. Keep air vents free of lint, hair, and other debris.

Never use while sleepy or drowsy.

Never drop or insert any object into any openings or hoses.

Do not use outdoors or operate where aerosol (spray) products are being used or where oxygen is being administered.

Connect this product to a properly grounded outlet only. See Section « GROUNDING INSTRUCTIONS » on page 6.

Unplug this product before filling water. Fill (reservoir) with water only unless otherwise specified by manufacturer. Do not overfill.

SAFETY INSTRUCTIONS

Carefully read and observe the following safety instructions!

Information for the user

Children or persons with limited physical/mental capabilities may require supervision or proper instructions/guidance prior to or during use. Ensure that children cannot play with intelligent toilet.

Avoid malfunctions and damage to the product as a result of improper use

If intelligent toilet is moved from a cold location to a warm location, condensation may form. Leave the unit switched off for a few hours.

Do not install the intelligent toilet in rooms where the temperature will be less than 4 °C (39 °F).

Do not place open flames, candles, cigarettes, or similar objects on or by the toilet.

Do not reuse old hoses or water lines. Please use new water lines when installing.

Do not install the intelligent toilet next to items that would potentially expose the toilet to a large amount of water.

Do not climb on or stand on the product.

Do not place any heavy objects on the lid.

Do not open or close the lid or seat with force.

Do not deliberately soil, spray or block the spray arm.

Repairs must only be carried out by a person with the necessary expertise

Do not carry out modifications, tamper with, install additional equipment, or attempt to repair the intelligent toilet.

Improperly performed repairs can lead to accidents, injuries, or damage to the product.

Only use the device when it is fully functional

Make sure the power cable is not damaged before use. Do not allow the power cable to be severely pinched, bent, or kinked.

Keep the power cable away from hot surfaces and sharp edges.

Do not handle the power cord or plug with wet hands.

Do not use the product if it is not working properly. In case of malfunction, disconnect the power immediately. Close the water cut-off valve to interrupt the water supply. Contact your installer.

Information on the use of batteries

Keep batteries out of the reach of small children. Batteries can be life-threatening if swallowed. If a battery has been swallowed, seek medical assistance immediately.

Do not attempt to recharge non-chargeable batteries for use with unit.

Always remove empty batteries from the remote control immediately. They may leak and cause damage.

Do not insert new and old batteries together in the remote control.

Clean the battery and contacts before inserting the battery. Make sure the batteries are oriented properly.

Remove the batteries if the remote control will not be used for an extended period of time.

Do not expose the batteries to hot surfaces or direct sunlight to reduce the risk of battery leakage.

If battery acid has leaked, avoid contact with skin, eyes and mucous membranes. In case of contact with the acid, flush the affected areas with large amounts of clean water and seek medical assistance immediately.

SAFETY

GROUNDING INSTRUCTIONS

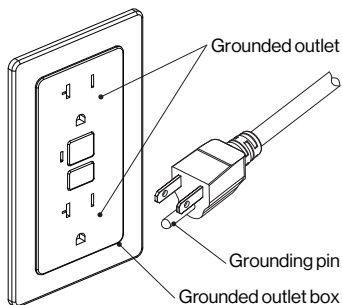
This product must be grounded when plugged in. The power cord on this product has a grounding plug and must be plugged into an outlet with a properly grounded grounding plug.



DANGER!

Improper use of grounding plug can result in a risk of electric shock

For safety, the intelligent toilet should be plugged into a standard 3 prong GFCI outlet.



Wiring Diagram (NOT FOR INSPECTOR'S USE)

FCC INSTRUCTIONS

Please note that changes or modifications not expressly approved by the party responsible for compliance could void the user's authority to operate the equipment.

Note: This equipment has been tested and found to comply with the limits for a Class B digital device, pursuant to part 15 of the FCC Rules. These limits are designed to provide reasonable protection against harmful interference in a residential installation. This equipment generates, uses and can radiate radio frequency energy and, if not installed and used in accordance with the instructions, may cause harmful interference to radio communications. However, there is no guarantee

that interference will not occur in a particular installation. If this equipment does cause harmful interference to radio or television reception, which can be determined by turning the equipment off and on, the user is encouraged to try to correct the interference by one or more of the following measures:

If repair or replacement of the power cord or plug is necessary, do not connect the grounding wire to either flat blade terminal.

This product is not to be used with extension cords.

This product is factory equipped with a specific electric cord and plug to permit proper connection. No adapters should be used with this product. Do not modify the power cord on the toilet. If the power cord will not fit the outlet, have the proper outlet installed by a qualified electrician. If the product must be reconnected for use on a different type of electric circuit, the reconnection should be made by qualified service personnel.

Please unplug unit immediately and contact for service if cord becomes damaged. Do not use a bidet seat with a damaged cord.



NOTE!

Actual installation may differ slightly from the diagram.

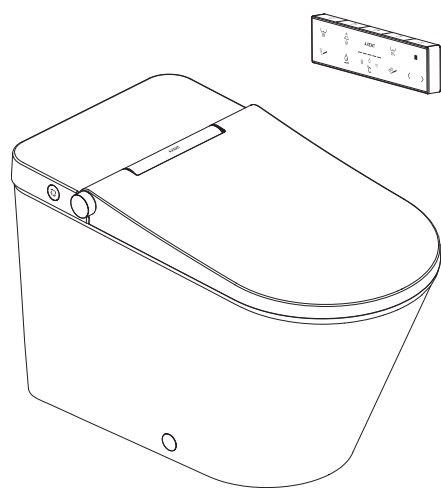
that interference will not occur in a particular installation. If this equipment does cause harmful interference to radio or television reception, which can be determined by turning the equipment off and on, the user is encouraged to try to correct the interference by one or more of the following measures:

- Reorient or relocate the receiving antenna.
- Increase the separation between the equipment and receiver.
- Connect the equipment into an outlet on a circuit different from that to which the receiver is connected.
- Consult the dealer or an experienced radio/TV technician for help.

INTRODUCTION

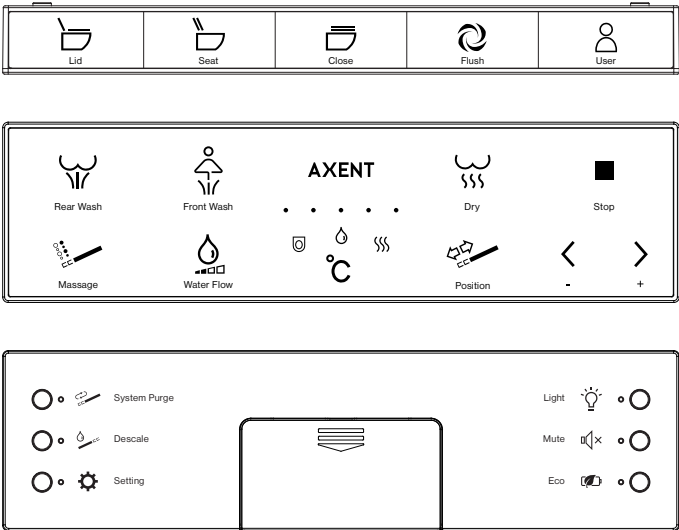
OVERVIEW

E314-02



REMOTE CONTROL

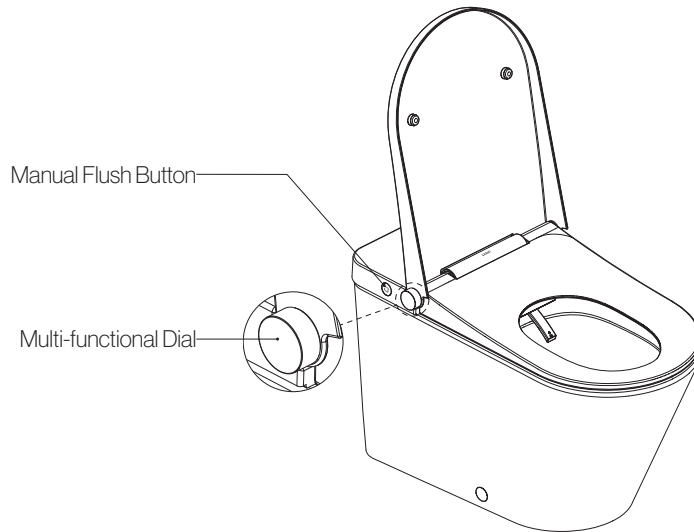
Activate the remote control by inserting the batteries.
For safety purposes, some functions, including the bidet, are only functional when the user is seated on the toilet seat.



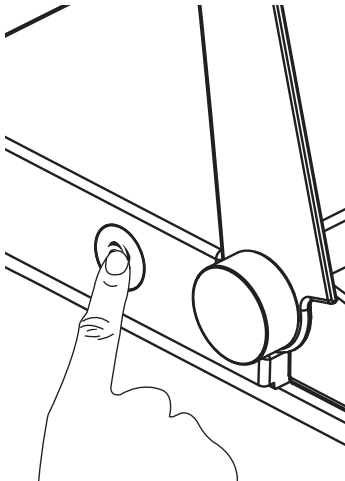
INTRODUCTION

MAIN

The intelligent toilet can be easily operated by the multi-functional dial and flush button.



MANUAL FLUSH



Press the Manual Flush Button located behind the multifunction knob to flush the toilet.

MULTI-FUNCTION DIAL

QUICK START

AXENT.ONE C PLUS offers a Quick Start function. Sit down on the toilet seat and push the dial. Rear Wash starts and will stop after another push on the button.

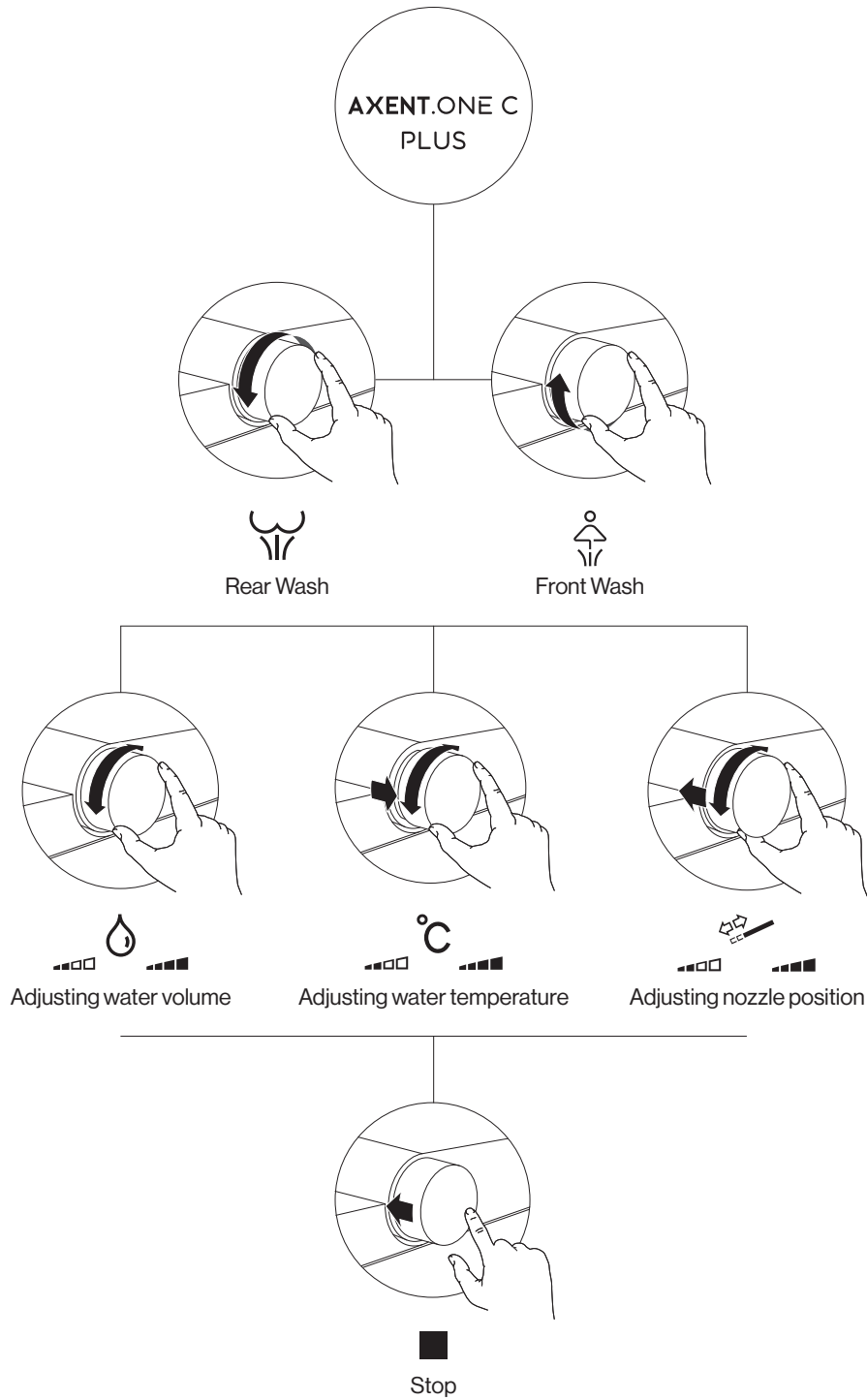


The spray arm is automatically cleaned with water before and after each washing procedure.



MULTI-FUNCTION DIAL

REGULAR USE



MULTI-FUNCTION DIAL

ADDITIONAL FEATURES

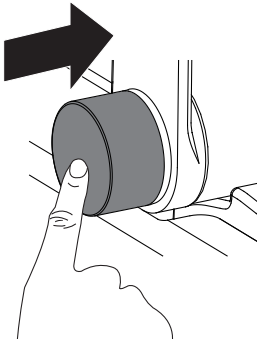
Additional settings and service functions may also be accessed with the multifunction dial. Access is done at two levels.

LEVEL 1

- Mute ON / OFF
- Seat heating ON / OFF
- Self-cleaning function ON / OFF
- System purge

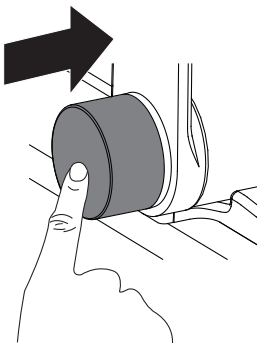
LEVEL 2

- Night light ON / AUTO / OFF
- Deodorizer ON / OFF
- Auto dry
- Spray arm cleaning
- System reset



ACTIVATING LEVEL 1

To activate LEVEL 1, press and hold the multifunction dial until the ambient light flashes slowly. The mode level 1 is activated when the ambient light continues to flash slowly.



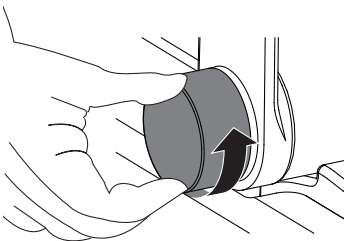
DEACTIVATING LEVEL 1

When the multifunction dial is already at LEVEL 1, push the dial. The ambient light will stop flashing and you will hear one single «beep». The mode level 1 is deactivated.

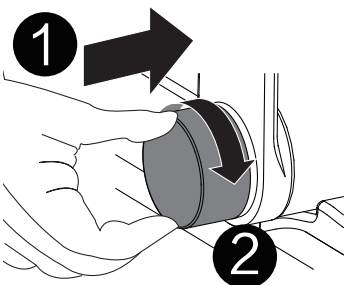


If no functions are used within 3 minutes, LEVEL 1 will automatically deactivate.

MULTI-FUNCTION DIAL

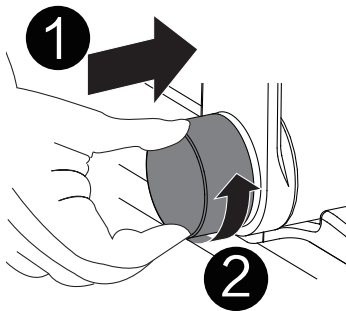


LEVEL 1	MUTE	ON / OFF
Factory setting:		Mute is OFF
When the multifunction dial is already at LEVEL 1 (the ambient light will flash slowly):		
- Turn the multifunction dial counter clockwise.		
No «beep»:		Mute is ON
Short «beep»:		Mute is OFF



LEVEL 1	SEAT HEATING	ON / OFF/AUTO
Factory setting:		Seat heating is ON
When the multifunction dial is already at LEVEL 1 (the ambient light will flash slowly):		
- Press and hold the multifunction dial.		
- Turn it clockwise.		
Short «beep»:		Seat heating is AUTO
Long «beep»:		Seat heating is ON
Long «beep»:		Seat heating is OFF

MULTI-FUNCTION DIAL



LEVEL 1 SELF-CLEANING FUNCTION ON / OFF

As soon as you sit down on the toilet seat, the spray arm will be cleaned with fresh water. This function can be turned ON or OFF.

Factory setting:

Self-cleaning function is ON

When the multifunction dial is already at LEVEL 1 (the ambient light will flash slowly):

- Press and hold the multifunction dial.
- Turn it counter clockwise.

Short «beep»:

Self-cleaning function is ON

Long «beep»:

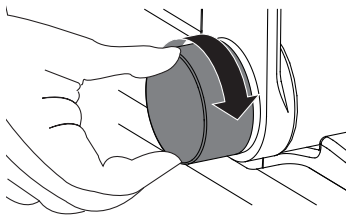
Self-cleaning function is OFF



The system purge process will automatically stop after 90 seconds.

LEVEL 1 SYSTEM PURGE

If the toilet has not been used for a long period of time, old water may be purged from the system and replaced with fresh water.



When the multifunction dial is already at LEVEL 1 (the ambient light will flash slowly):

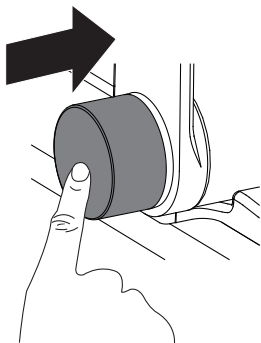
- Turn multifunction dial clockwise.
- You will hear one short «beep». The system purge has started.
- When the system purge is in progress, turn multifunction dial clockwise again, the system purge process stops in the same time you'll hear one long «beep».

The system purge process will automatically stop after 90 seconds.



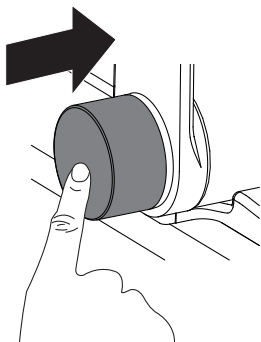
Turn multifunction dial clockwise again to stop the system purge procedure immediately.

MULTI-FUNCTION DIAL



ACTIVATE FUNCTIONS AT LEVEL 2

When the multifunction dial is already at LEVEL 1, press and hold the dial again until the ambient light flashes quickly. The mode level 2 is activated when the ambient light continues to flash quickly.

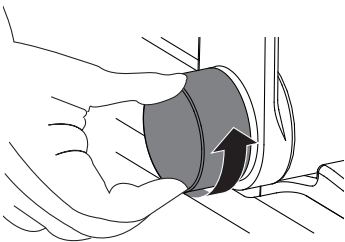


DEACTIVATE FUNCTIONS AT LEVEL 2

When the multifunction dial is already at LEVEL 2, push the dial. The ambient light will stop flashing and you will hear one single «beep». The mode level 2 is deactivated.

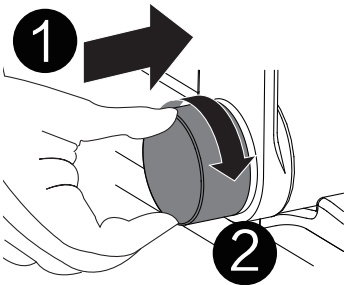


If no functions are used within 3 minutes, LEVEL 2 will automatically deactivate.

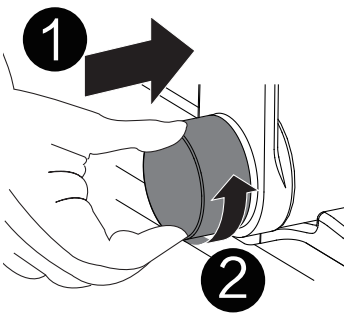


LEVEL 2	NIGHT LIGHT	ON / OFF/AUTO
Factory setting:	AUTO mode – The night light turn ON or OFF automatically according to ambient light levels.	
When the multifunction dial is already at LEVEL 2 (the ambient light will flash quickly):		
- Turn multifunction dial counter clockwise.		
Short «beep»:	Night light function is AUTO	
Long «beep»:	Night light function is ON	
Long «beep»:	Night light function is OFF	

MULTI-FUNCTION DIAL



LEVEL 2	DEODORIZER	ON / OFF
<hr/>		
Factory setting:		Deodorizer is ON
The deodorizer function is activated when a user is seated.		
When the multifunction dial is already at LEVEL 2 (the ambient light will flash quickly):		
- Press and hold the multifunction dial.		
- Turn it clockwise.		
Short «beep»:		Deodorizer is ON
Long «beep»:		Deodorizer is OFF



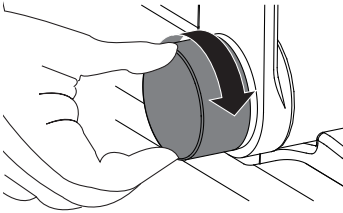
LEVEL 2	AUTO DRY	ON / OFF
<hr/>		
Factory setting:		Auto Dry is OFF
The Auto Dry function is started when a user presses the multifunction dial during Rear or Front Wash.		
When the multifunction dial is already at LEVEL 2 (the ambient light will flash quickly):		
- Press and hold the multifunction dial.		
- Turn it counter clockwise.		
Short «beep»:		Auto dry is ON
Long «beep»:		Auto dry is OFF

MULTI-FUNCTION DIAL

LEVEL 2 SPRAY ARM CLEANING

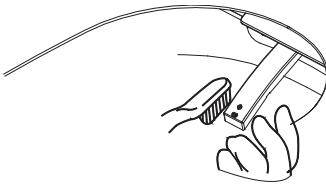
When the multifunction dial is already at LEVEL 2 (the ambient light will flash quickly):

- Turn the multifunction dial clockwise.



The spray arm will move out.

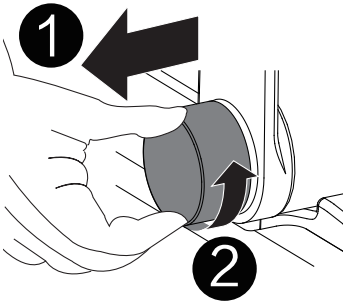
- Clean the spray arm with fabric or a soft bristled brush.
- Turn the multifunction dial clockwise again to retract the spray arm.



LEVEL 2 SYSTEM RESET

When the multifunction dial is already at LEVEL 2 (the ambient light will flash quickly):

- Pull the multifunction dial.
- Turn it counter clockwise.

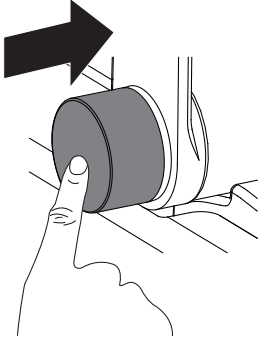


Short «beep»:

All values are reset to factory settings

MULTI-FUNCTION DIAL

STAND-BY MODE

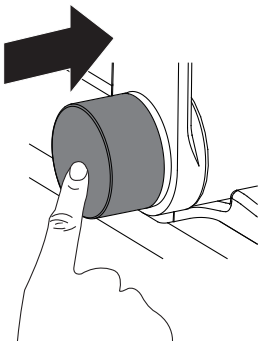


Press and hold the multifunction dial until the ambient light is off to activate Stand-By mode. In Stand-By mode, all functions of the toilet will deactivate until reactivated.

Gently tap the toilet seat lid to deactivate Stand-By mode.

PAIRING TO DIAL

Cut off the power to the intelligent toilet, wait for 30 seconds, and then reapply power.



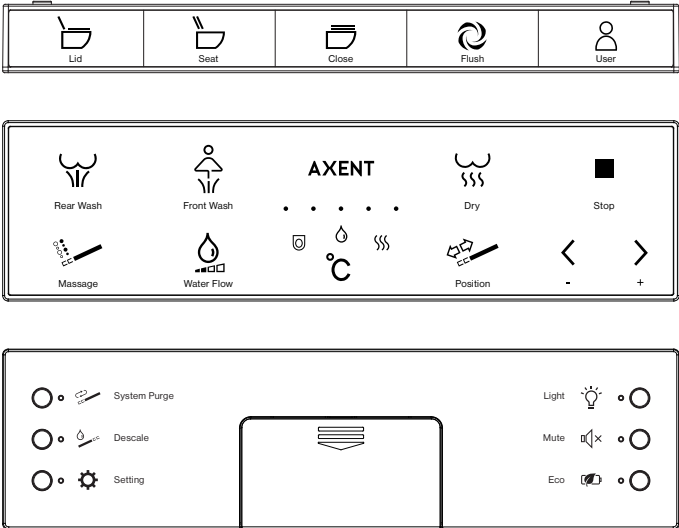
After three times short «beep», start pairing by pressing multifunction dial repeatedly until hearing three times long «beep» from the intelligent toilet, which means pairing successful.



Pairing has originally been done in the factory. It is only necessary after the seat or the dial has been replaced.

REMOTE CONTROL

REMOTE CONTROL



REMOTE CONTROL ON/OFF/REPLACING BATTERIES

- | | |
|----------------------|--|
| ON: | Insert batteries. |
| OFF: | Remove batteries. |
| Replacing batteries: | When power is below 15%, the first and last of Level Indicator will blink on and off, indicating the battery needs to be replaced. |



Do NOT insert new and old batteries together in the remote control.

STAND-BY MODE REMOTE CONTROL

The remote control enters into the standby mode automatically and all indicator lights turn off when there is no activity for some time. Press « Stop » to exit stand-by mode.

REMOTE CONTROL

PAIRING

Cut off the power to the intelligent toilet, wait for 30 seconds, and then reapply power.



After three times «beep», start pairing by pressing « Stop » repeatedly until hearing three times long «beep» from the intelligent toilet, which means pairing successful.



Pairing has originally been done in the factory. It is only necessary after the remote control has been replaced.

OPENING AND CLOSING THE SEAT AND LID



Press « Lid » when the unit is not in use to open the lid.

- When Auto Open is enabled and set to Lid, the lid will automatically open when someone approaches.



Press « Seat » when the unit is not in use to open the seat and lid.

- When Auto open is enabled and set to Seat, the lid and seat will automatically open when someone approaches.



Press « Close » when the unit is not in use to close the lid and seat.

- Lid and seat will be closed automatically 2 minutes after leaving.



The seat will only open automatically after being closed for more than 10 seconds.

Please do not put things on the lid or seat.

FLUSH

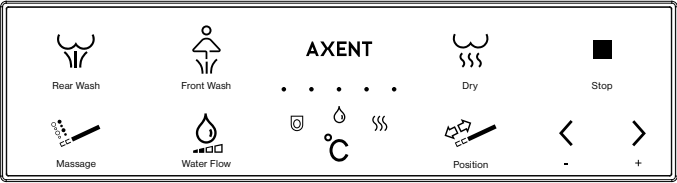


Press « Flush » to start.

- After being seated for more than 5 seconds, the function will be started after a period of time defined by the Auto flush setting which defaults to 15 seconds.

REMOTE CONTROL

FRONT OF REMOTE CONTROL



REAR WASH



Rear Wash

Press « Rear Wash » after you are seated to start.



Stop

Press « Stop », to stop the Rear Wash early.
If not stopped manually, the Rear Wash will stop automatically after 3 minutes.

FRONT WASH



Front Wash

Press « Front Wash » after you are seated to start.



Stop

Press « Stop », to stop the Front Wash early.
If not stopped manually, the Front Wash will stop automatically after 3 minutes.

OSCILLATING AND PULSATING SHOWER



Massage

- During Rear or Front Wash,
- Press « Massage » once to start Oscillating.
 - Press « Massage » twice to start Pulsating.
 - Press « Massage » three times to start Oscillating and Pulsating.

REMOTE CONTROL

WATER VOLUME



Water Volume

Press « Water Volume » during Rear or Front Wash to adjust the water volume.

The Level Indicator indicates the selected level.



Minus

Press « Minus » to reduce the water volume.



Plus

Press « Plus » to increase the water volume.

SPRAY ARM POSITION



Position

Press « Position » during Rear or Front Wash to adjust the position of the spray arm.

The Level Indicator indicates the selected level.



Minus

Press « Minus » to move the Spray Arm backward.



Plus

Press « Plus » to move the Spray Arm forward.

DRY



Dry

Press « Dry » after you are seated to activate the dryer.



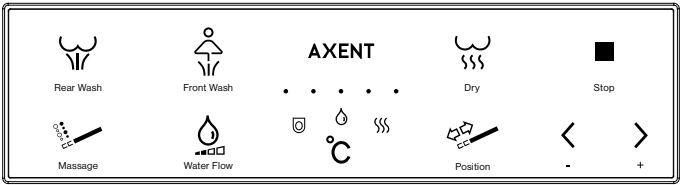
Stop

Press « Stop », to stop the dryer early.

If not stopped manually, the dryer will stop automatically after 3 minutes.

REMOTE CONTROL

FRONT OF REMOTE CONTROL



TEMPERATURE ADJUSTMENT



Temp

To adjust the seat, water, or air dryer temperature, press « Temp » repeatedly until the respective icon lights up.



Seat Temp



Water Temp



Air Temp



Minus

Press « Minus » to reduce the temperature.

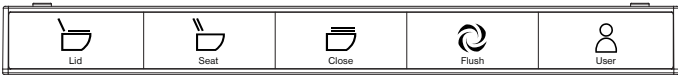


Plus

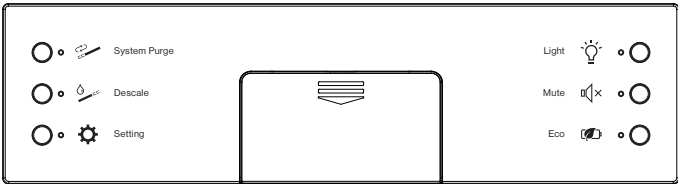
Press « Plus » to increase the temperature.

REMOTE CONTROL

TOP OF REMOTE CONTROL



BACK OF REMOTE CONTROL



NIGHT LIGHT SETTING



Light

Factory setting: AUTO mode – The night light turn ON or OFF automatically according to ambient light levels.

Press « Light » to enter into the setting.
Press « Light » to switch amount ON, OFF and AUTO.

The indicator indicates the selected option:

- AUTO	The indicator blinks 3 times and turns on.
- ON	The indicator light remains on.
- OFF	The indicator blinks for one second and turns off.

MUTE SETTING



Mute

Factory setting: Mute setting is OFF.

Press « Mute » to set the mute mode ON or OFF.

The indicator indicates the selected option:

- ON	The indicator light remains on.
- OFF	The indicator blinks for one second and turns off.

ECO SETTING



Eco

Factory setting: Eco setting is OFF.

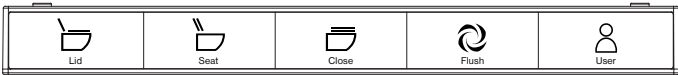
Press « Eco » to turn the function on or off.
When the ECO function is turned on, the seat will be intelligently heated according to the user's usage habits.

The indicator indicates the selected option:

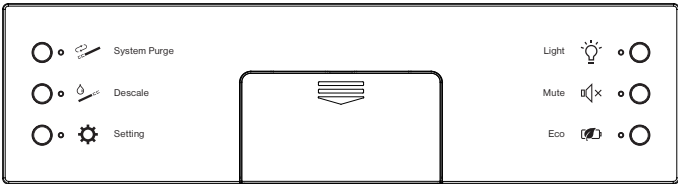
- ON	The indicator light remains on.
- OFF	The indicator blinks for one second and turns off.

REMOTE CONTROL

TOP OF REMOTE CONTROL



BACK OF REMOTE CONTROL



AUTO OPEN SETTING



Setting

Factory setting: Auto Open will only open the lid.



Lid

Press « Setting » at the same time « Lid » to activate Auto Open Setting.

Press « Lid » repeatedly to switch among OFF, Lid and Seat.

The Level Indicator indicates the selected level:

- | | |
|--------|----------------------|
| - OFF | One indicator on. |
| - Lid | Three indicators on. |
| - Seat | Five indicators on. |

AUTO OPEN SENSITIVITY SETTING



Setting

Press « Setting » at the same time « Seat » for 2 seconds. All 3 temperature lights will light up, and activate Auto Open Sensitivity adjustments. The Level Indicator indicates the selected level. Each indicator corresponds to [4] fine increments, resulting in a total of [20] levels.



Seat



Minus

Press « Minus » to reduce the Auto Open Sensitivity.



Plus

Press « Plus » to increase the Auto Open Sensitivity.

Press « STOP » to exit Auto Open Sensitivity adjustments.

REMOTE CONTROL

AUTO CLOSE SETTING



Setting

Factory setting: Auto Close function is ON.



Close

Press « Setting » at the same time « Close » to activate Auto Close.
Press « Close » repeatedly to enable or disable Auto.

The Level Indicator indicates the selected level:

- OFF	One indicator on.
- ON	Five indicators on.

AUTO FLUSH SETTING



Setting

Factory setting: Auto Flush function is 15 seconds.



Flush

Press « Setting » at the same time « Flush » to activate Auto Flush Setting.
Press « Flush » repeatedly to toggle between OFF, 5 seconds, 10 seconds, 15 seconds, 20 seconds and 25 seconds.

The Level Indicator indicates the selected level:

- OFF	All indicators off.
- 5 seconds	One indicator on.
- 10 seconds	Two indicators on.
- 15 seconds	Three indicators on.
- 20 seconds	Four indicators on.
- 25 seconds	Five indicators on.

DEODORIZE SETTING



Setting

Factory setting: Deodorize function is ON.



Mute

Press « Setting » at the same time « Mute » to turn the function on or off.

The indicator indicates the selected option:

- ON	The indicator light remains on.
- OFF	The indicator blinks for one second and turns off.

USER PROFILE



User

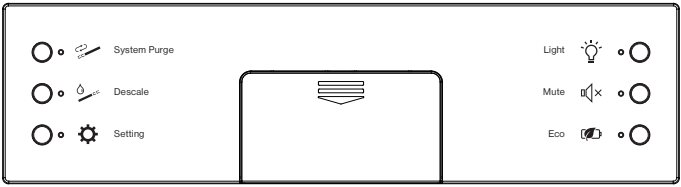
Press « User » to switch between different user profiles. There are a total of 5 user profiles.

The Level Indicator indicates the selected user profile.

Functions will automatically revert to settings defined by the user.
Changes to the user's settings will be saved automatically when the user profile is active.
You will exit the user profile mode after activating the stand-by mode of the remote control for a moment.

REMOTE CONTROL

BACK OF REMOTE CONTROL



SELF CLEANING SETTING



Factory setting: Self Cleaning function is ON.



Press « Setting » at the same time « Eco » to turn the function on or off.
When the Self Cleaning function is turned on, as soon as you sit down on the toilet seat, the spray arm will be cleaned with fresh water.

The indicator indicates the selected option:
- ON The indicator light remains on.
- OFF The indicator blinks for one second and turns off.



The system will always clean itself after use. This cannot be disabled.

SYSTEM PURGE



System Purge

After a long period of inactivity, the water inside of the unit can be purged and replaced with fresh water.

Press « System Purge » to turn on function.

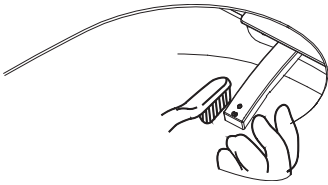
The system purge process will automatically stop after 90 seconds.

REMOTE CONTROL

SPRAY ARM CLEANING



Press « Descal » to extend the spray arm for cleaning.



The spray arm will move out.

- Clean the spray arm with a fabric or a soft bristle brush.
- Press « Descal » again to retract the spray arm.



If no other functions are used, the spray arm will automatically retract after 3 minutes.

RESET



Remove the batteries to turn off the remote control.



Press « Eco », « Setting » and insert batteries at the same time. The remote control will be restored to factory settings when turned on.



The reset function will reset the intelligent toilet and remote control to factory settings. All user profiles will be deleted.

MAINTENANCE

DURING VACATION

If this product will not be in use for an extended period of time, please perform the following in this order:

- Disconnect the electrical power.
- Shut off the water inlet valve.
- Press the Manual Flush button.

WINTERIZATION

Please ensure water temperatures will not drop below 39 °F. Frost or frozen water will damage the system and may lead to leakage.

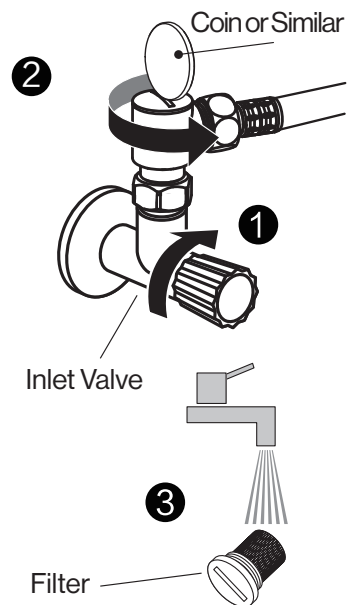
If the water or ambient temperature drops below 39 °F , please discontinue use of product. Additionally, if the intelligent toilet is moved from a cold location to a warm location, condensation may form. Leave the unit switched off for a few hours before use.

- Disconnect the electrical power.
- Shut off the water inlet valve.
- Disconnect the water inlet hose from the filter to drain out the water inside of the line.
- Press the Manual Flush button.



FAILURE TO DRAIN SYSTEM MAY RESULT IN DAMAGE TO SYSTEM AND LEAKAGE OR FLOODING. RELATED DAMAGE AND INCIDENTALS WILL NOT BE COVERED UNDER WARRANTY OR IN ANY OTHER MANNER BY AXENT.

FILTER CLEANING



The filter screen will need to be cleaned frequently. If the unit does not fill up properly, starts to lose pressure, or does not function normally, please clean the filter first.



DO NOT use the product without the filter. Otherwise the product may not be warranty. The water inlet valve must be shut off during the entire filter cleaning process. The filter may be reinserted in reverse after cleaning.

MAINTENANCE

CLEANING INSTRUCTIONS SEAT, LID AND BACK COVER

Use a mild soap solution to clean the seat. Please take care that the seat and hinges are not left damp. Dry off any residual water or cleaning agent with a soft cloth. Ensure that the seat and seat hinges do not come in contact with abrasive, corrosive, or chlorine-based cleaners, as these may cause damage or lead to flash rust. When cleaning the bowl, make sure that the seat and cover are kept in an upright position until all cleaning agent has been flushed away.



DISCONNECT THE POWER BEFORE CLEANING THE PRODUCT.

Do NOT use any scouring equipment or tools (ex: scouring pad) or any aggressive cleaning agents for cleaning.

CLEANING CERAMIC APPLIANCES

Do not use harsh or abrasive cleaning substances such as abrasive cleansers, scouring powder or drain cleaner on your ceramic surfaces. Also avoid using steam cleaners and hard, abrasive sponges. Please do not pour or dispose of hair coloring products into the toilet as this can reduce the effectiveness of the AXENT Easy Clean coating.

By following these maintenance guidelines, AXENT Easy Clean should remain effective for many years. AXENT highly recommends the use of acidic cleaners with a pH value between 1 and 4. Cleaners with a pH value in the neutral range (5 to 8) are not always suitable. We strongly advise against using either weak or strong alkaline cleaners, i.e. substances with pH values from 9 to 12.

SUITABLE CLEANING DETERGENTS

- Mild bathroom or all-purpose cleaner
- Mild detergents
- Normal toilet brushes
- Soft sponges
- Microfiber cloth

REMOVING THE TOILET SEAT AND LID

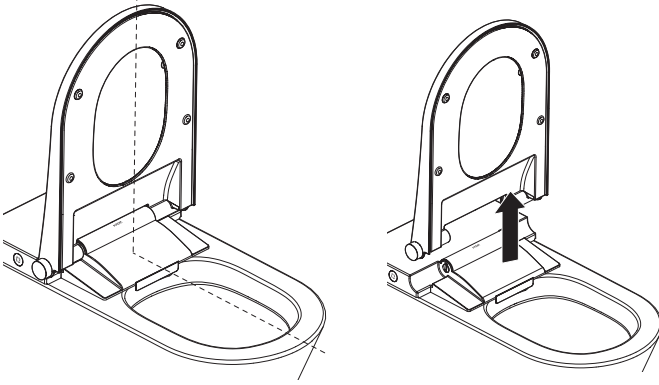


The toilet seat and lid can be removed, cleaned and remounted quickly and easily when heavily soiled.

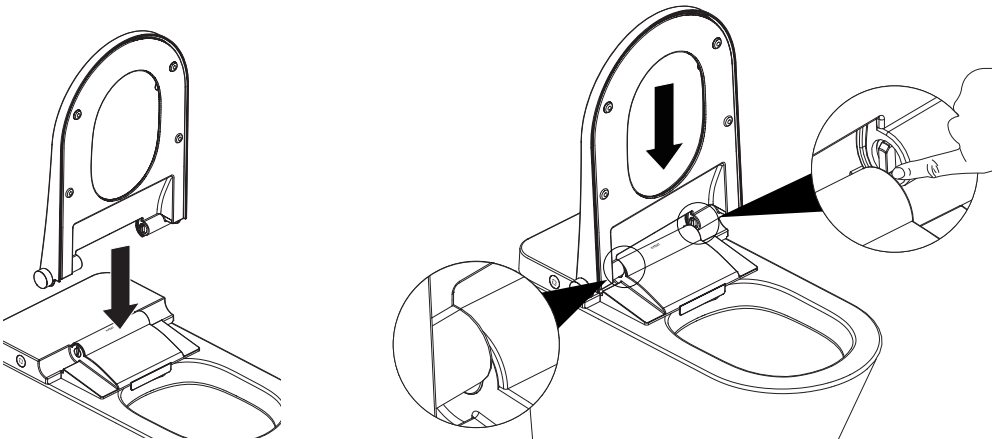
1. Disconnect electrical power.
2. Lift up on the toilet seat and lid.
3. Remove the toilet seat and lid by lifting up vertically so the pins come out of the mounting holes.
4. Clean the toilet seat and lid.
5. Insert the toilet seat and lid vertically from the top down into the mounting holes. Make sure the pins are aligned properly.
6. Let the toilet seat and lid glide down.
7. Connect the electrical power.

MAINTENANCE

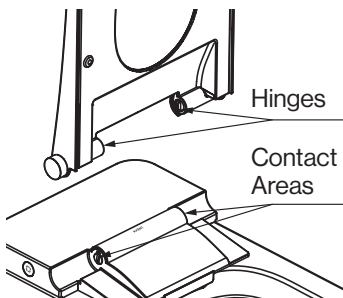
UNINSTALLING AND INSTALLING THE LID AND SEAT



INSTALLING THE LID AND SEAT



CLEANING HINGES



The hinges and contact areas on the toilet seat and cover must be cleaned regularly. This ensures the proper function of the intelligent toilet.

- Clean up the contact areas on the cover with moistened cloth.
- Clean up the hinges bolts on toilet seat with a damp cloth.



Do NOT use any cleaning agents for cleaning.

TROUBLESHOOTING



ELECTRICAL SHOCK! FATAL DANGER!

Never open the unit in order to repair it yourself. Never modify the device or add any additional modules. The AXENT intelligent toilet carries live power when plugged in and opening it exposes those present to fatal danger!
Warranty and liability claims as a result of wrong handling are specifically excluded.

RESTART

Perform a reset, if needed. Unplug the AXENT intelligent toilet, wait for 30 seconds, then reconnect to power.

FREQUENTLY ASKED QUESTIONS

IN CASE OF MINOR MALFUNCTIONS, PLEASE REFER TO THE FOLLOWING TABLE. IF THE BELOW SOLUTIONS DO NOT RESOLVE THE ISSUE, PLEASE CONTACT CUSTOMER SUPPORT FOR FURTHER EXAMINATION AND REPAIR.

Malfunction	Cause	Solution	Page
No function	Product in Stand-by mode	Gently tap the toilet seat lid to deactivate Stand-by mode.	17
Remote control does not work	Battery is low	Replace batteries.	/
Level Indicator blinks on and off	Battery is low	Replace batteries.	/
Remote control works but does not control toilet	Out of range	Please use the remote control within the inductive distance.	/
Spray arm move out too slowly	Self-cleaning	Please wait for self-cleaning to finish.	/
Low water volume	Water volume set too low	Increase water volume.	21
Low water temperature	Water temperature set too low	Increase water temperature.	22
Water stop suddenly	Leaving the seat during washing	Seated and restart the washing.	20
Spray arm extending without water spraying out	Seat does not sense person	Reconfirm position on seat.	20

TROUBLESHOOTING

Malfunction	Cause	Solution	Page
Dryer does not work	Seat does not sense person	Reconfirm position on seat.	21
Low air temperature	Air temperature set too low	Increase air temperature.	22
Massage does not work	Can only be activated during the wash cycle	Restart massage during Front or Rear wash.	20
Low seat temperature	Seat temperature set too low	Increase seat temperature.	22
High seat temperature	Seat temperature set too high	Reduce seat temperature.	22
Low seat or water temperature upon initial use	Eco mode is on	Turn off Eco mode.	23
Seat will not open automatically	Auto open off	Set auto open as Lid or Seat.	24
	Lid not closed	Close lid.	19
	Less than 10 seconds after last Auto Close	Wait for 10 seconds after last Auto Close.	/
Auto close does not work	The user is still within the inductive distance	Leave the inductive distance or be static for 2 minutes	/
Deodorizer still runs after leaving seat	The deodorizer continues to run for 60 seconds after leaving the seat to increase effectiveness.	This is normal.	/
Deodorize does not work	Deodorize off	Turn on Deodorizer.	25
	Seat does not sense person	Reconfirm position on seat and proper installation of seat.	/
	During washing	Wait for washing to finish and Deodorize will start automatically.	/

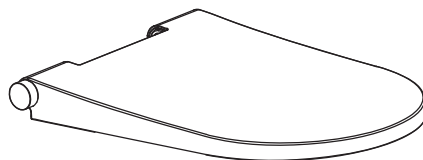
TROUBLESHOOTING

Malfunction	Cause	Solution	Page
Night light does not work	Night light in OFF mode	Switch night light setting to ON or AUTO mode.	23
Night light always on	Night light in ON mode	Switch night light setting to AUTO or OFF mode.	23
Spray arm retracts automatically during Descale process.	Wand will automatically retract after 3 minutes of inactivity.	Please restart the Descale process.	27
Water sprays out when Descale is activated	Sensing area on seat is covered	Deactivate sensor by removing object.	/
Continuous « beep »	Water temperature over normal usage limits	Disconnect the main plug and contact customer service.	/
Leakage protector trips frequently	Current leakage exceeds the normal value	Disconnect the main plug and contact customer service.	/

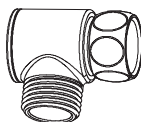
TROUBLESHOOTING

REPLACEMENT PARTS LIST

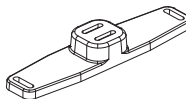
Individual instructions will be included with applicable replacement parts.



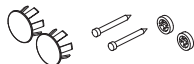
X10000000834
Seat and Lid



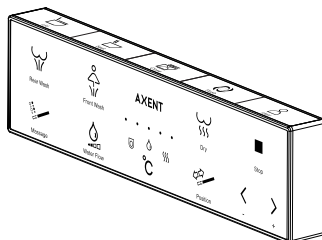
X10000000882
Filter



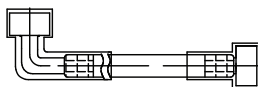
X10000001509
flange support



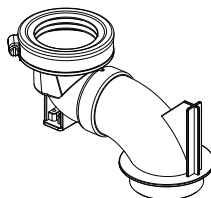
X10000000975
Bowl Mounting Hardware / Plug



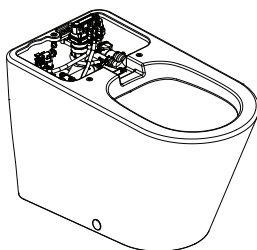
X10000000963
Remote Control



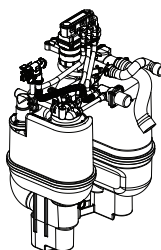
X10000000881
Inlet Hose-set-2
(Left: 15/16"-14UNS Right: 1/2"-14NPSM)



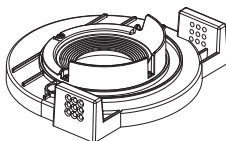
X10000001441
Base Flange



X10000001461
Toilet Bowl



X10000001437
Power Flush



X10000001442
12" Base Flange

TECHNICAL DATA

Nominal voltage	120 V~, 60 Hz
Power consumption (max.)	1300 W
Protection degree	IPX4
Cable length	1.1 m (43 $\frac{3}{16}$ inches)

Recommended Pressure Range	0.14 - 0.75 MPa (20 - 108 psi)
Ambient Temperature Range	4 - 40 °C (+39 to +104 °F)
Water Temperature Range	4 - 35 °C (+39 to +95 °F)
Product Weight	42 kg (93lbs)
Product Dimension (L × B × H)	725 × 403 × 500 mm (28 $\frac{1}{2}$ × 15 $\frac{7}{8}$ × 19 $\frac{3}{8}$ inches)
Maximum Load (Seat and Lid)	150 kg (330 lbs)

Max. flow rate Rear Wash	650 ml/min ($\frac{1}{16}$ gal/min)	5 levels
Max. flow rate Front Wash	650 ml/min ($\frac{1}{16}$ gal/min)	5 levels
Spray arm position		5 levels
Water temperature	31 - 39 °C (+88 to +102 °F)	5 levels
Air dryer temperature	30 - 46 °C (+86 to +115 °F)	5 levels
Seat temperature	29 - 37 °C (+84 to +98 °F)	5 levels

TECHNICAL SUPPORT

For any questions or any assistance with this product, please contact your dealer or call us at

1-800-769-4857

support@axentproducts.com

www.axentbath.us

LEGAL DIRECTIONS

This manual contains important information on the intended use, correct operation and proper maintenance of the equipment. Knowledge of and compliance with the instructions of this manual are provided for both the safe use of the equipment and for the safety of its operation and maintenance. In this manual, not all kinds of applications and improper manipulations are considered. In addition, attention is drawn to the following: The content of these instructions is neither part of any previous or existing agreement, commitment or legal relationship, nor does it change from an existing agreement, commitment or legal relationship. Any commitment by AXENT results from the respective warranty. These include the complete and authoritative warranty obligation AXENT. The statements in this manual do not constitute an extension or a restriction of the claims under the warranty provisions. This manual is protected by copyright. Copies and / or translations into other languages may be made only with prior written approval of AXENT.

GUARANTEE

AXENT LIMITED WARRANTY

A three-year limited warranty applies to all AXENT products purchased on or after May 1, 2019. All products purchased on or before April 30, 2019 OR purchased for use in a commercial or hospitality setting on any date are backed by AXENT's one-year limited warranty. All spare parts purchased for use with Axent products are covered by a six (6) month limited warranty unless otherwise stated on the product.

1. AXENT warrants that its products are free from defects caused by defective material and faulty workmanship for a period of three-year from the date of purchase by the original purchaser. The limited warranty is to the original purchaser only. The limited warranty is not transferable to any third party. Proof of purchase showing both original ownership and purchase date is required for any warranty claim. The limited warranty applies to all products sold by authorized dealers in the United States and Canada and used within the United States and Canada. This warranty is limited to parts only and AXENT is not responsible for any installation labor charges, removal charges, installation, or other incidental or consequential cost.
2. AXENT's sole and maximum liability for breach of its warranties herein is limited to the obligation, at AXENT's sole discretion to repair, replace, or make appropriate adjustments to bring the product back to normal operating function. AXENT reserves the right to inspection of the product and verification of normal residential usage conditions during the warranty period before warranty claims are handled. In no event shall AXENT or Seller be liable to Buyer for consequential, incidental, economic, or special damages stemming from any breach of express or implied warranty.
3. Purchaser shall comply with the following procedures in connection with the warranty claim:
 - AXENT is notified in writing by Purchaser within thirty (30) days after discovery of defects;
 - Purchaser obtains a Return Authorization from AXENT prior to returning any defective product to AXENT;
 - The defective products are returned to AXENT, all shipping charges prepaid by Purchaser (provided however, that if upon examination by AXENT, it determines that the products are entitled to warranty, then AXENT shall be responsible for shipping charge to and from AXENT's facility).
 - The defective products are received by AXENT for adjustment no later than fifteen (15) days following the last day of the warranty period; and
 - AXENT's examination of such goods shall disclose that such defects or failures have not been caused by misuse, abuse, neglect, improper installation or application, repair, alteration, damage by rain, fire or casualty or by accident or negligence in use, storage, transportation or handling.
4. This warranty does not apply to the following items:
 - Damage or loss sustained in a fire, earthquake, storm or any natural disaster etc...
 - Damage or loss resulting from any unreasonable use, misuse, abuse, negligence or improper care, improper cleaning or maintaining of the product.
 - Damage or loss as a result of the use of in-tank toilet cleaners.
 - Damage or loss resulting from any sediments or foreign matter contained in the water system.
 - Damage or loss from improper installation, harsh environment, improper removal and water pressure in excess of 80PSI.
 - Damage or loss resulting from electrical surges, lightning strikes or other acts which are not considered normal or the fault of AXENT.
 - Damage or loss resulting from normal wear and tear, such as gloss reduction or dulling, scratching or fading over time due to normal use, cleaning practices, water or atmospheric conditions including but not limited to: bleach, alkali, acid cleaners, dry powdered cleaners or any other abrasive cleaning agents or abrasive cleaning tools or aids.
 - The use of any product in a manner outside of the product instructions / owner's manuals.
 - AXENT shall not be liable for any failure caused by chloramines in the public treated waters or cleaners containing chlorine (calcium hypochlorite). Please note that use of high concentrate chlorine or chlorine related products can damage fittings. This damage can cause leakage resulting in property damage.
5. AXENT'S OBLIGATION TO HONOR THESE WARRANTIES IS CONTINGENT UPON AXENT'S RECEIPT OF PAYMENT IN FULL FOR THE GOODS ENTITLED TO THIS WARRANTY. AXENT DISCLAIMS ALL OTHER WARRANTIES, EXPRESS, IMPLIED, OR STATUTORY, INCLUDING, WITHOUT LIMITATION, THE IMPLIED WARRANTIES OF MERCHANTABILITY AND FITNESS FOR A PARTICULAR PURPOSE. SELLER HAS NOT AUTHORIZED ANYONE TO MAKE ANY REPRESENTATION OR WARRANTY OTHER THAN AS PROVIDED ABOVE. THE FOREGOING STATES THE ENTIRE WARRANTY LIABILITY OF SELLER.

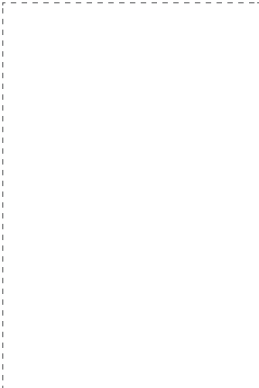
To obtain warranty service, contact AXENT's service team through your dealer or plumbing contractor, or via the points of contact below:

Mailing Address: Attn. Customer Service Department 3 Musick, Irvine, CA 92618

E-mail: Support@axentproducts.com

Phone: 1-800-769-4857

Place serial number sticker
here for reference:



AXENT Corporation Ltd.

www.axentbath.us
support@axentproducts.com
1-800-769-4857