

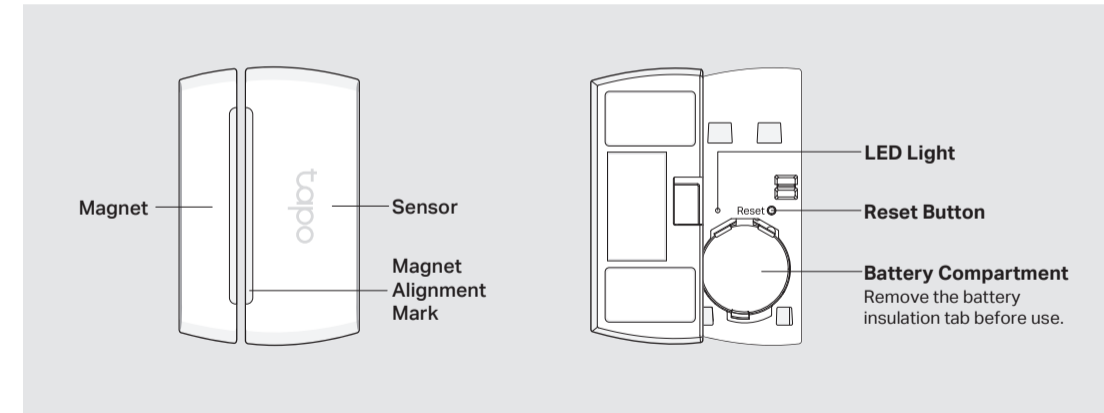


# Quick Start Guide

Contact  
Sensor

## Meet Your Contact Sensor

Know when doors and windows are opened or closed and send you instant alerts via the Tapo app.



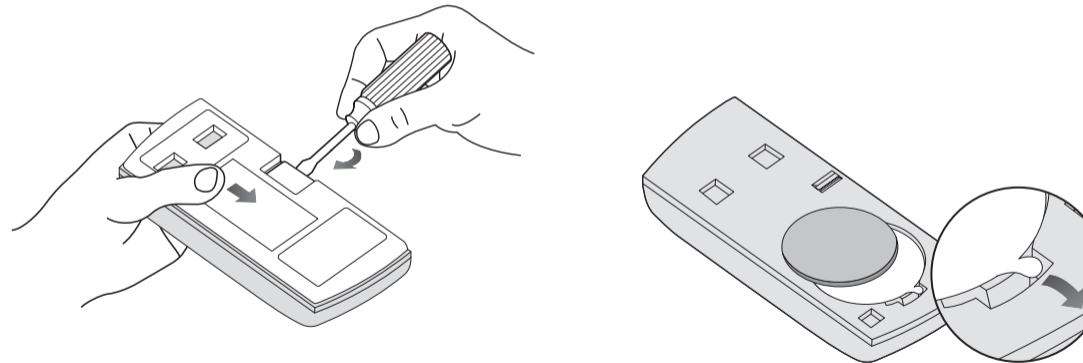
## Before You Start

A Tapo Hub is required. Make sure your Tapo Hub is successfully added via the Tapo app.



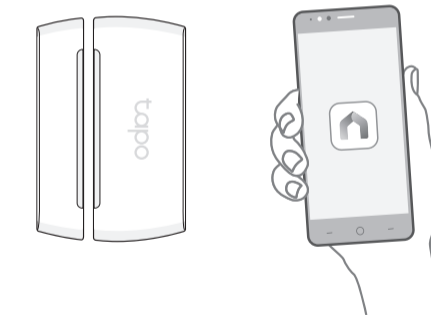
## 1. Power Up Your Sensor

- Use a screwdriver to tilt the clip (not pry) and slide the cover down by hand.
- Remove the battery insulation tab to power up your Tapo device.



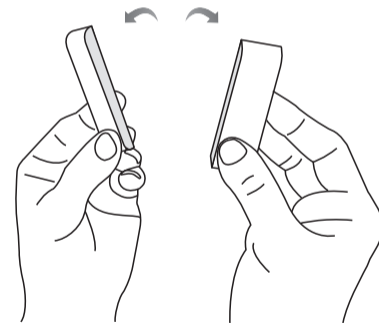
## 2. Set Up Your Sensor

Open the Tapo app, tap the  $\oplus$  button in the app, and select your model. Follow app instructions to complete the setup.



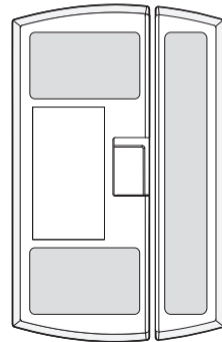
### 3. Test Your Sensor

Open and close the sensor to test it. Make sure the Tapo app shows the sensor is open when you pull it apart.



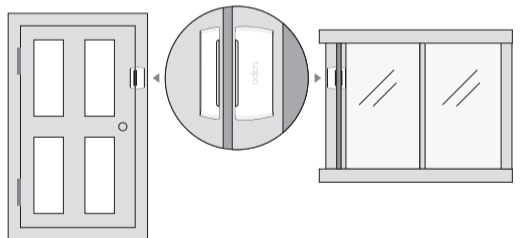
### 4. Mount Your Sensor

a. Stick the attached tape on the sensor and magnet.  x2  x1

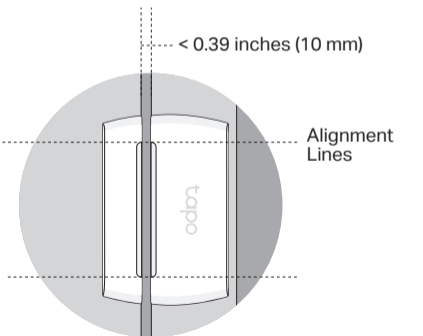


b. Choose where you'd like to install (but don't affix it yet). Place the magnet near the edge of the door or window that moves.

Note: The recommended height is below 6.56 ft (2 m).



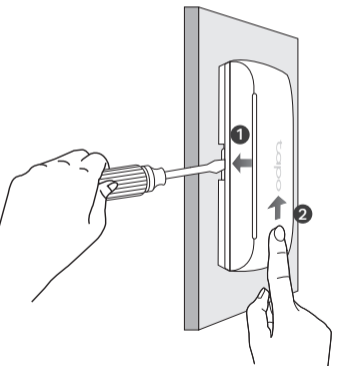
c. Align the magnet and sensor with no more than 0.39 inches (10 mm) between them. Peel the backing from the attached tape and press the sensor and magnet into place.



### Additional Info

#### How to replace the battery

Remove the cover of your sensor and replace the battery with a fresh cell.



#### How to enter paring mode

Remove the cover of your sensor, then use a pin to press and hold the Reset button for 5 seconds until the LED starts blinking.

#### How to test the effective range

Remove the cover of your sensor and single press the Reset button. If the hub makes a voice prompt, it indicates the your sensor can communicate effectively with the hub.

#### Support

For technical support, the user guide and more, please visit <https://www.tapo.com/support/>



Do not ingest battery, Chemical Burn Hazard  
This product contains a coin / button cell battery. If the coin / button cell battery is swallowed, it can cause severe internal burns in just 2 hours and can lead to death.  
Keep new and used batteries away from children.  
If the battery compartment does not close securely, stop using the product and keep it away from children.  
If you think batteries might have been swallowed or placed inside any part of the body, seek immediate medical attention.

Safety Information  
Keep the device away from water, fire, humidity or hot environments.  
Do not attempt to disassemble, repair, or modify the device. If you need service, please contact us.  
Do not use the device where wireless devices are not allowed.  
Please read and follow the above safety information when operating the device. We cannot guarantee that no accidents or damage will occur due to improper use of the device. Please use this product with care and operate at your own risk.

CAUTION!  
Avoid replacement of a battery with an incorrect type that can defeat a safeguard.  
Avoid disposal of a battery into fire or a hot oven, or mechanically crushing or cutting of a battery, that can result in an explosion.  
Do not leave a battery in an extremely high temperature surrounding environment that can result in an explosion or the leakage of flammable liquid or gas; Do not leave a battery subjected to extremely low air pressure that may result in an explosion or the leakage of flammable liquid or gas.

**FCC compliance information statement**



Product Name: Tapo Smart Contact Sensor

Model Number: Tapo T110

**Responsible party:**

**TP-Link USA Corporation**

Address: 10 Mauchly, Irvine, CA 92618

Website: <https://www.tp-link.com/us/>

Tel: +1 626 333 0234

Fax: +1 909 527 6804

E-mail: [sales.usa@tp-link.com](mailto:sales.usa@tp-link.com)

This equipment has been tested and found to comply with the limits for a Class B digital device, pursuant to part 15 of the FCC Rules. These limits are designed to provide reasonable protection against harmful interference in a residential installation. This equipment generates, uses and can radiate radio frequency energy and, if not installed and used in accordance with the instructions,

may cause harmful interference to radio communications. However, there is no guarantee that interference will not occur in a particular installation. If this equipment does cause harmful interference to radio or television reception, which can be determined by turning the equipment off and on, the user is encouraged to try to correct the interference by one or more of the following measures:

- Reorient or relocate the receiving antenna.
- Increase the separation between the equipment and receiver.
- Connect the equipment into an outlet on a circuit different from that to which the receiver is connected.
- Consult the dealer or an experienced radio/ TV technician for help.

This device complies with part 15 of the FCC Rules. Operation is subject to the following two conditions:

- 1) This device may not cause harmful interference.
- 2) This device must accept any interference received, including interference that may cause undesired operation.

Any changes or modifications not expressly approved by the party responsible for compliance could void the user's authority to operate the equipment.

Note: The manufacturer is not responsible for any radio or TV interference caused by unauthorized

modifications to this equipment. Such modifications could void the user's authority to operate the equipment.

**FCC RF Radiation Exposure Statement:**

This equipment complies with FCC RF radiation exposure limits set forth for an uncontrolled environment. This device and its antenna must not be co-located or operating in conjunction with any other antenna or transmitter.

"To comply with FCC RF exposure compliance requirements, this grant is applicable to only Mobile Configurations. The antennas used for this transmitter must be installed to provide a separation distance of at least 20 cm from all persons and must not be co-located or operating in conjunction with any other antenna or transmitter."

Issue Date: 2022-2-7