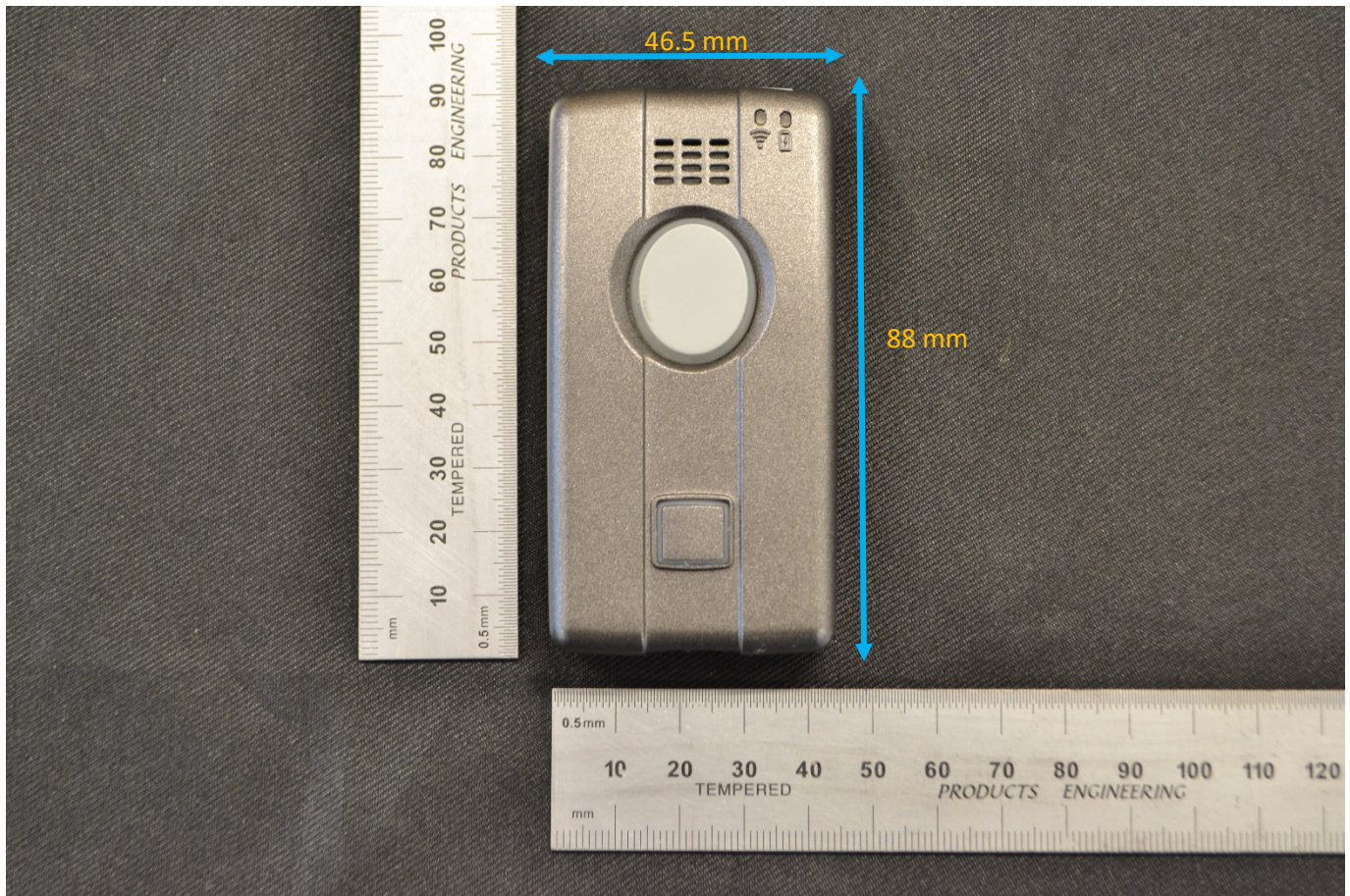


## DUT and SAR Set-up Photos

### Overall Dimensions



**Front View of the DUT**



**Rear View of the DUT**





## Setup photos

Vertical  
Center Line

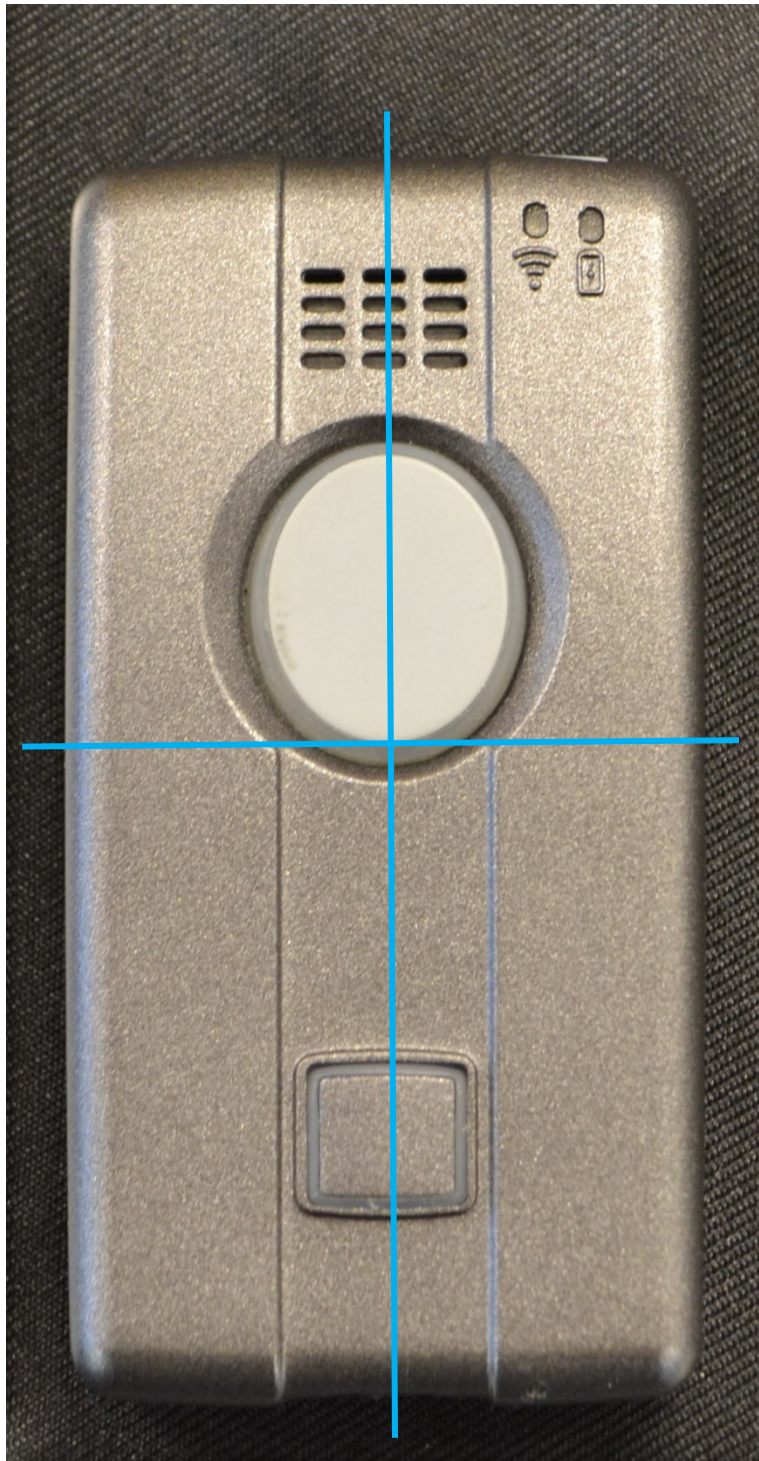
Edge 1 (Top)

Edge 4 (Left)

Horizontal  
Line

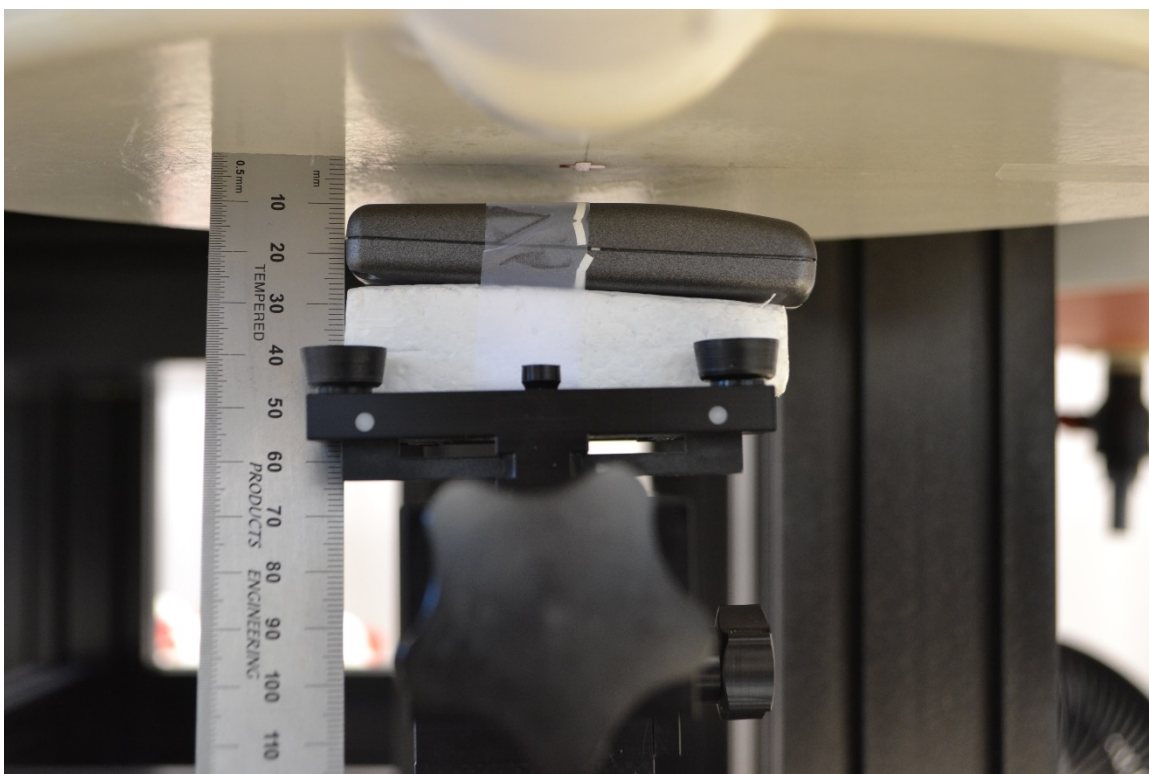
Edge 2 (Right)

Edge 3  
(Bottom)



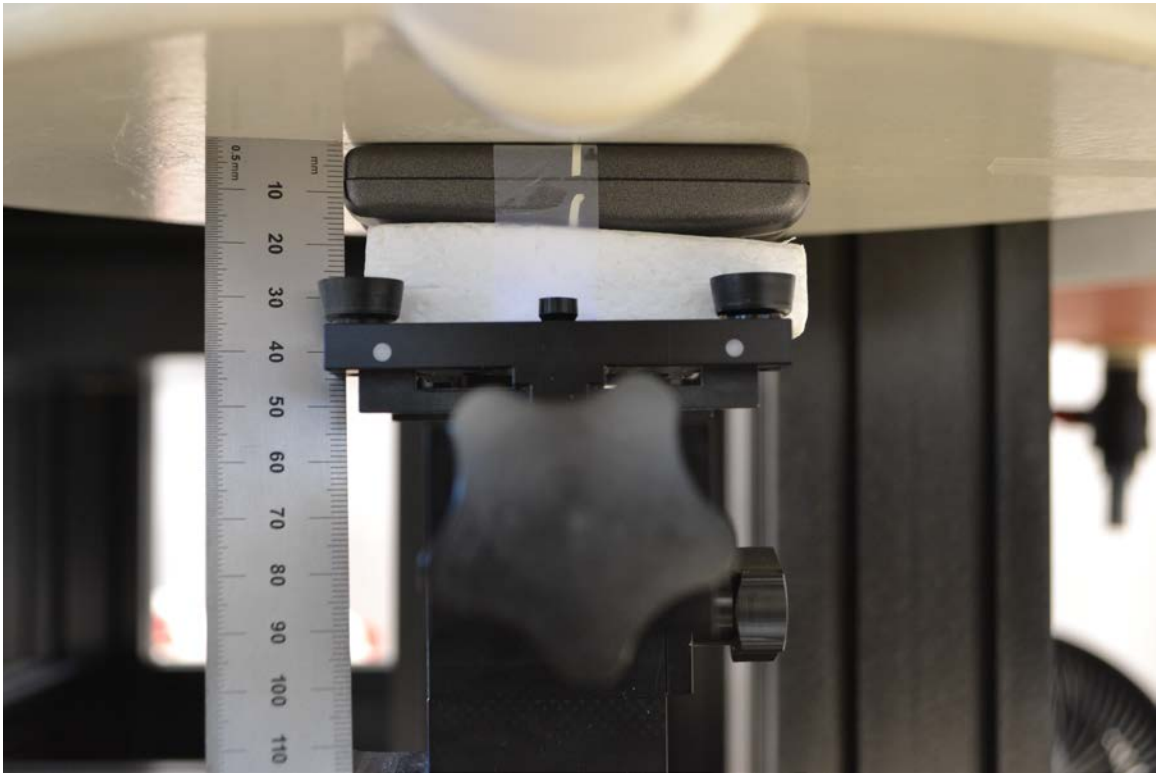
# Head Exposure Conditions

Front 10mm

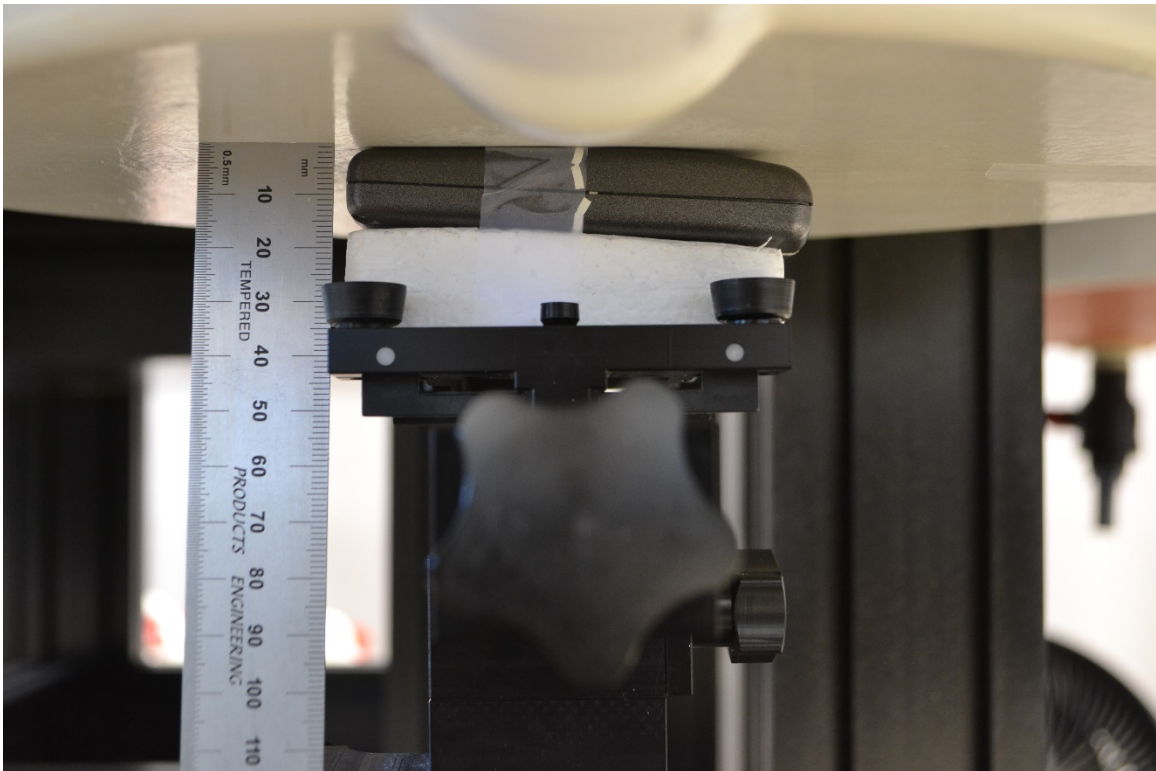


## Extremity Exposure Conditions

Rear 0mm

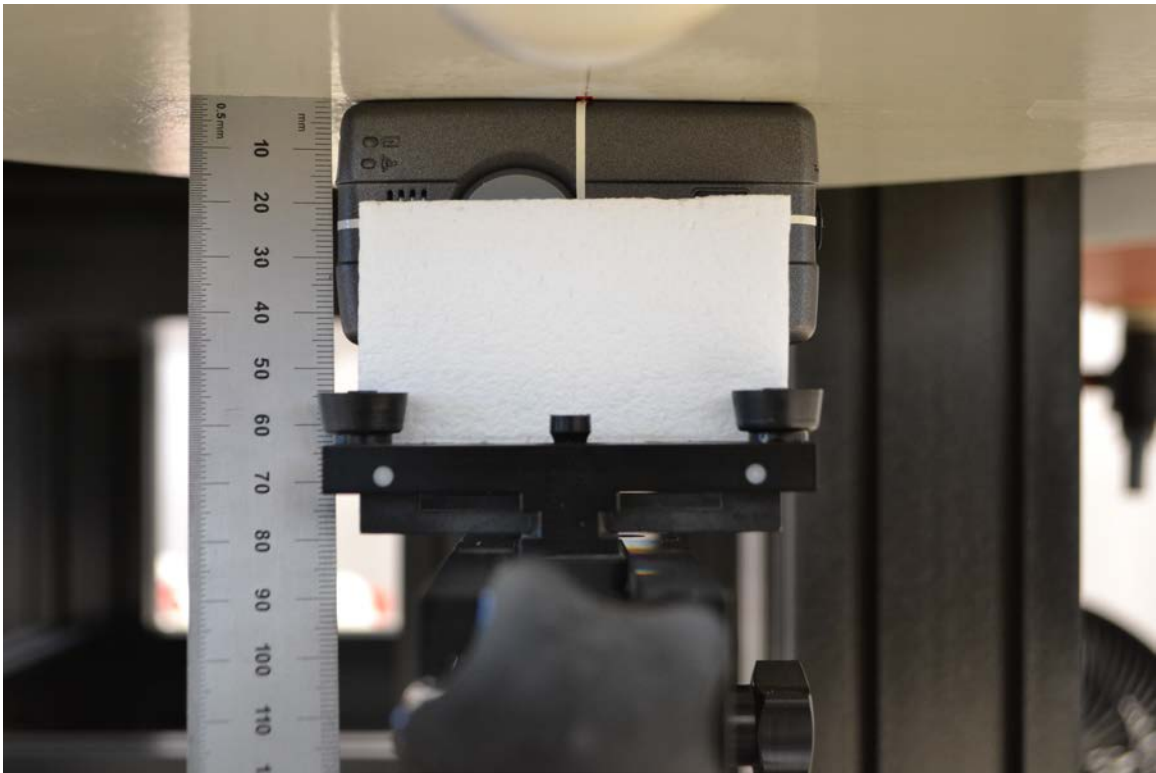


Front 0mm

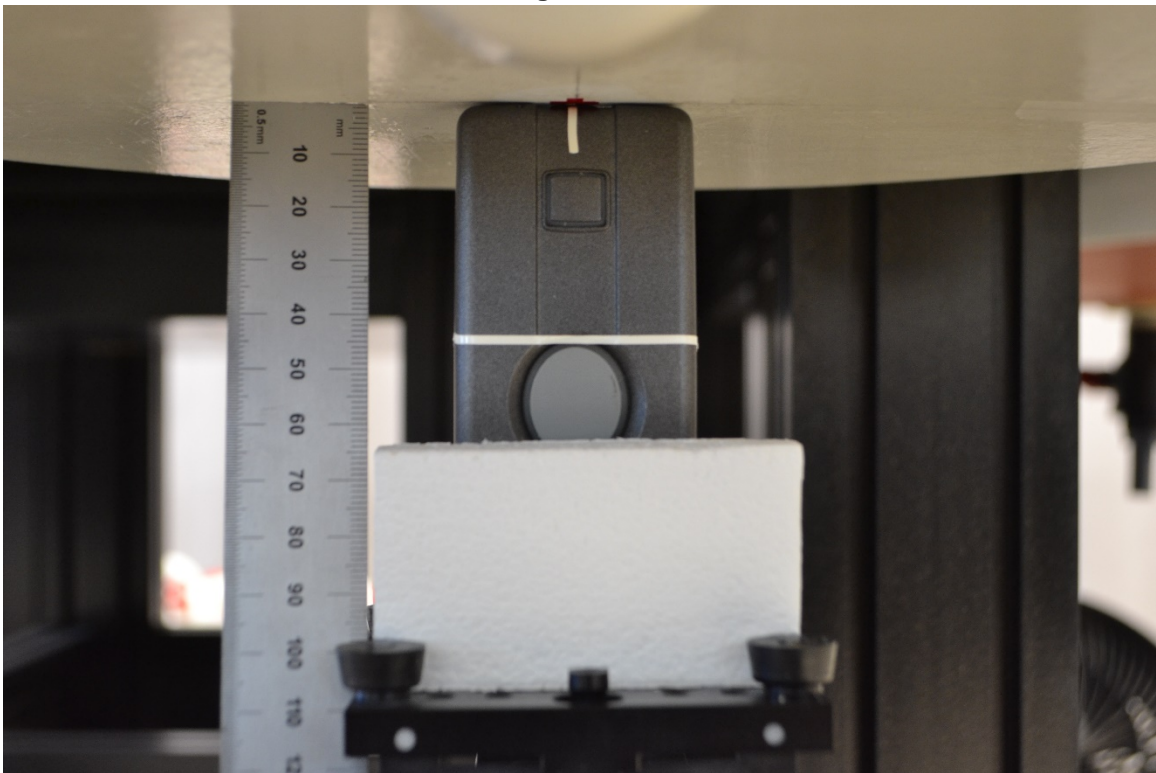




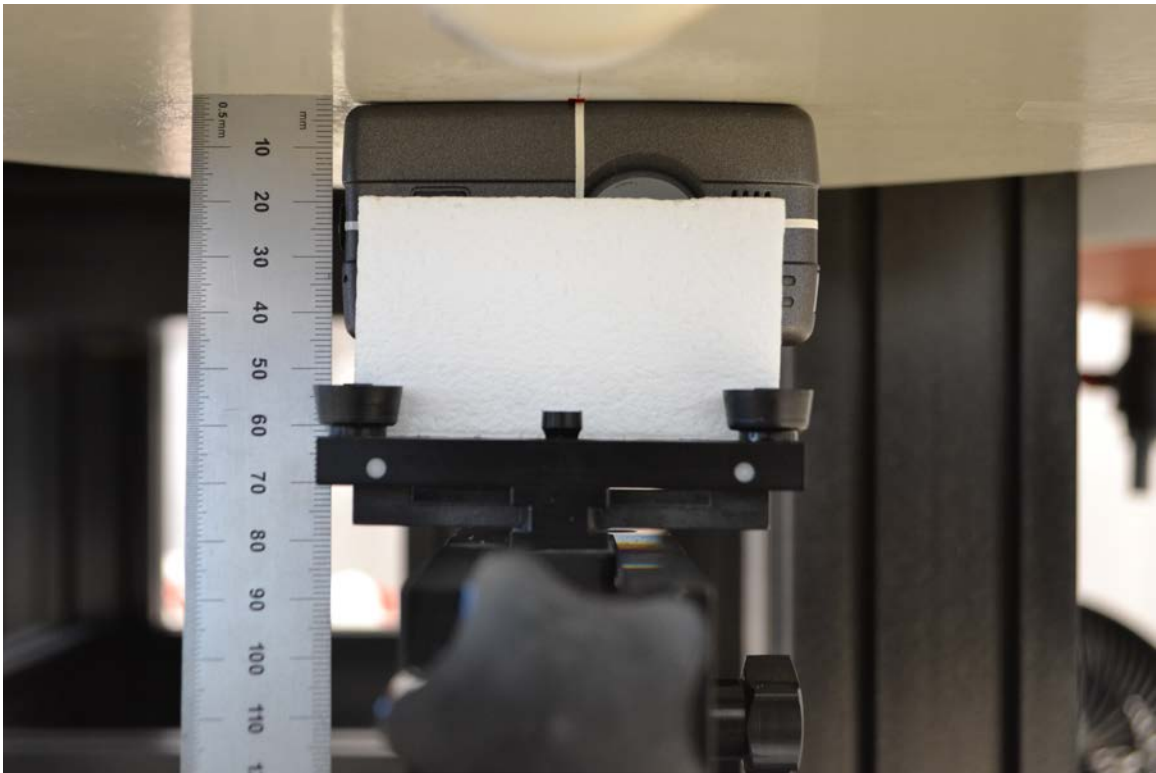
**Edge 2 0mm**



**Edge 3 0mm**



Edge 4 0mm



## Antenna Location

Figures 1 & 2 highlight the positions of the main antenna. Note that there are geometries on the top and bottom layers.

