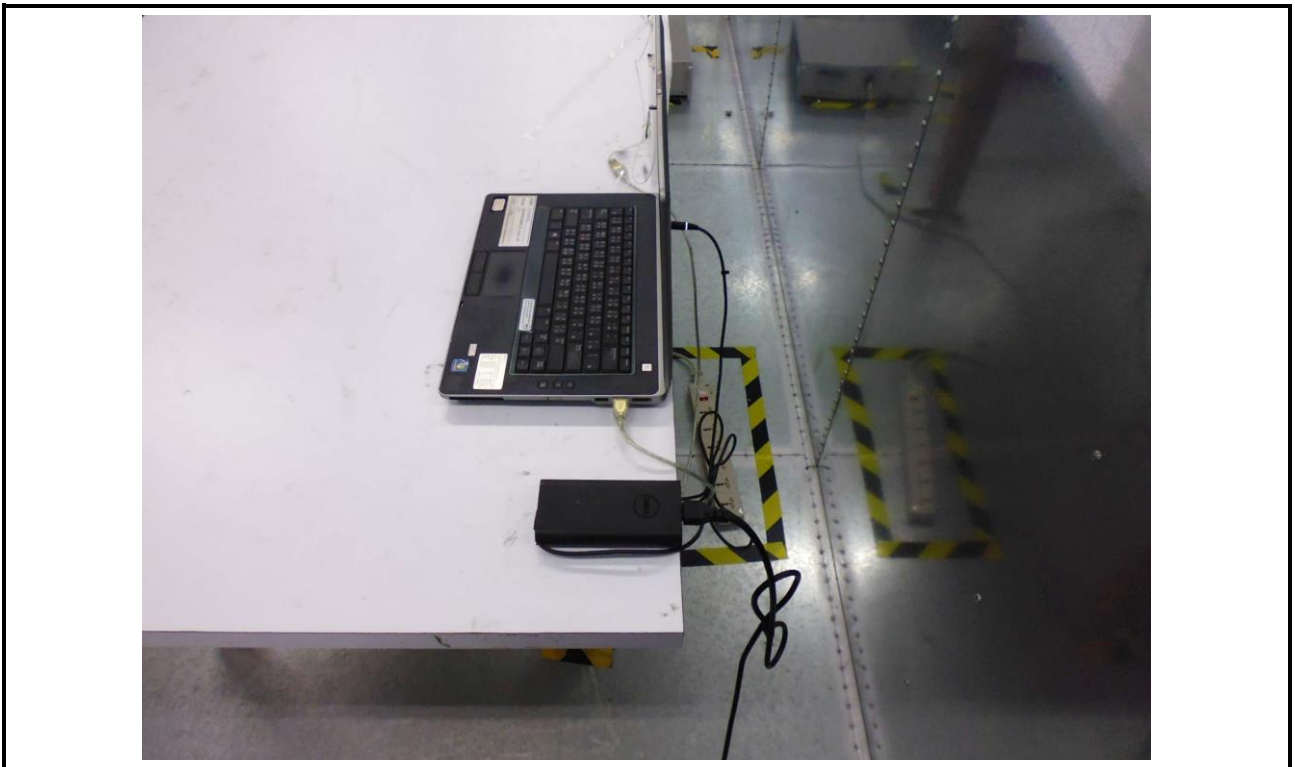
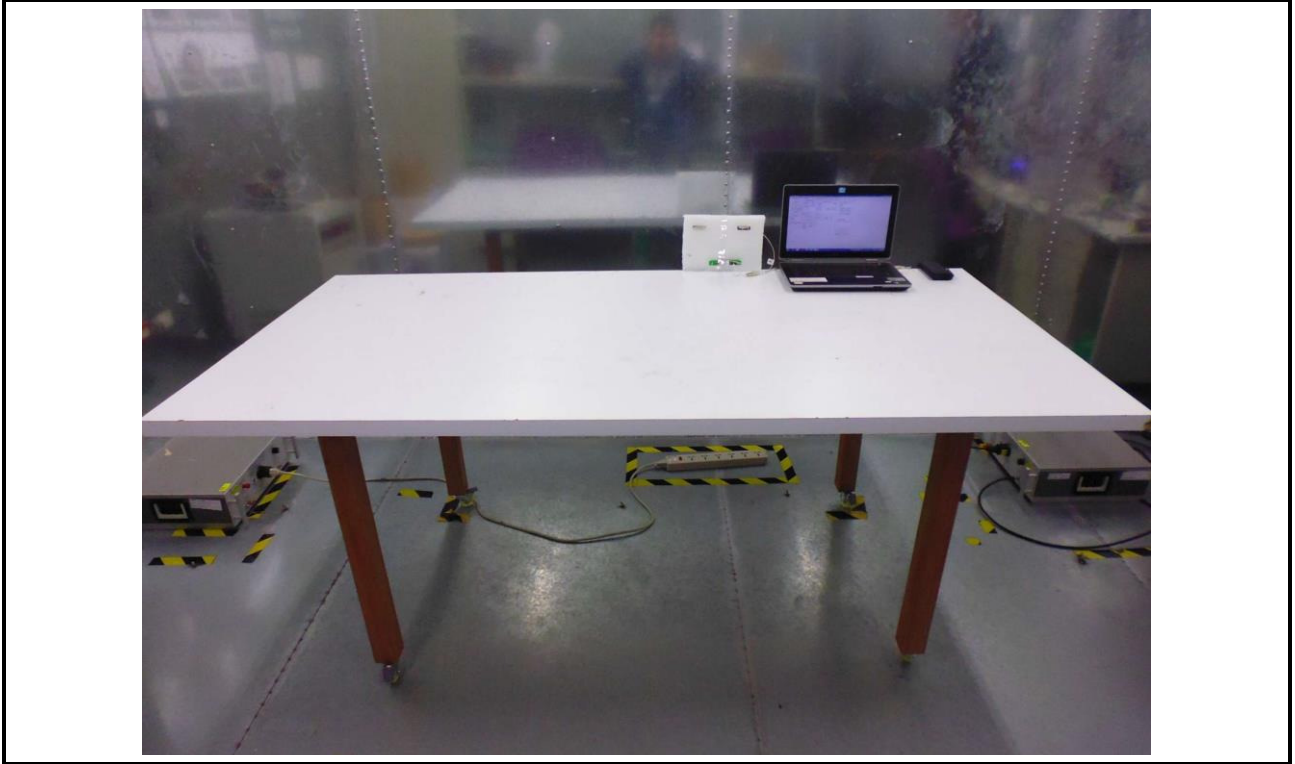


Photographs of the Test Configuration

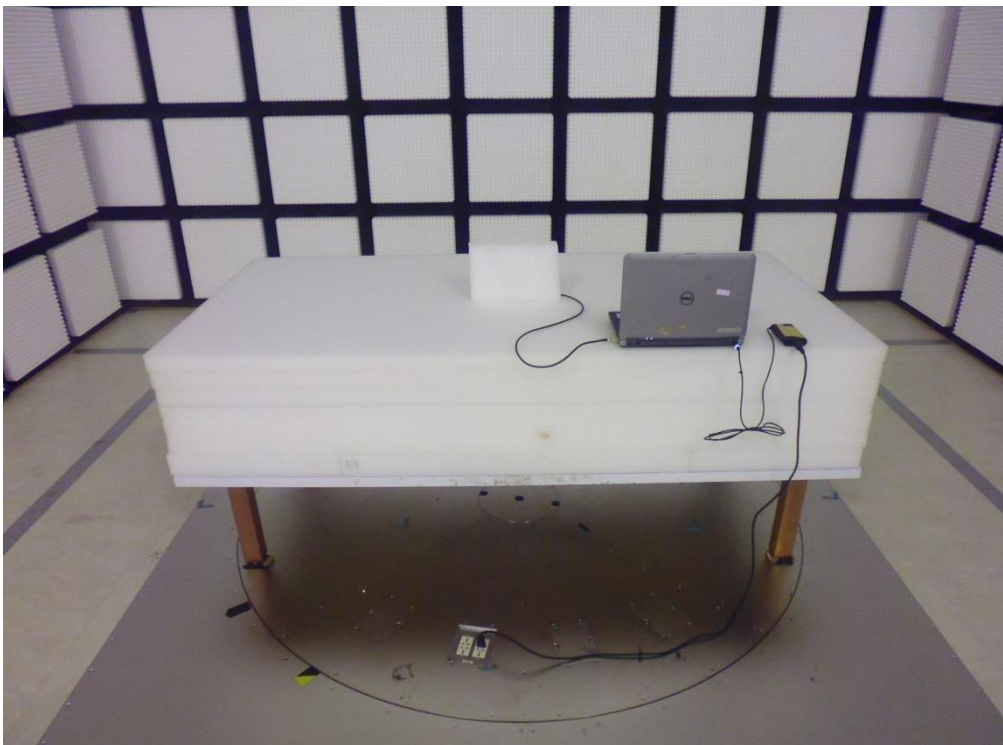
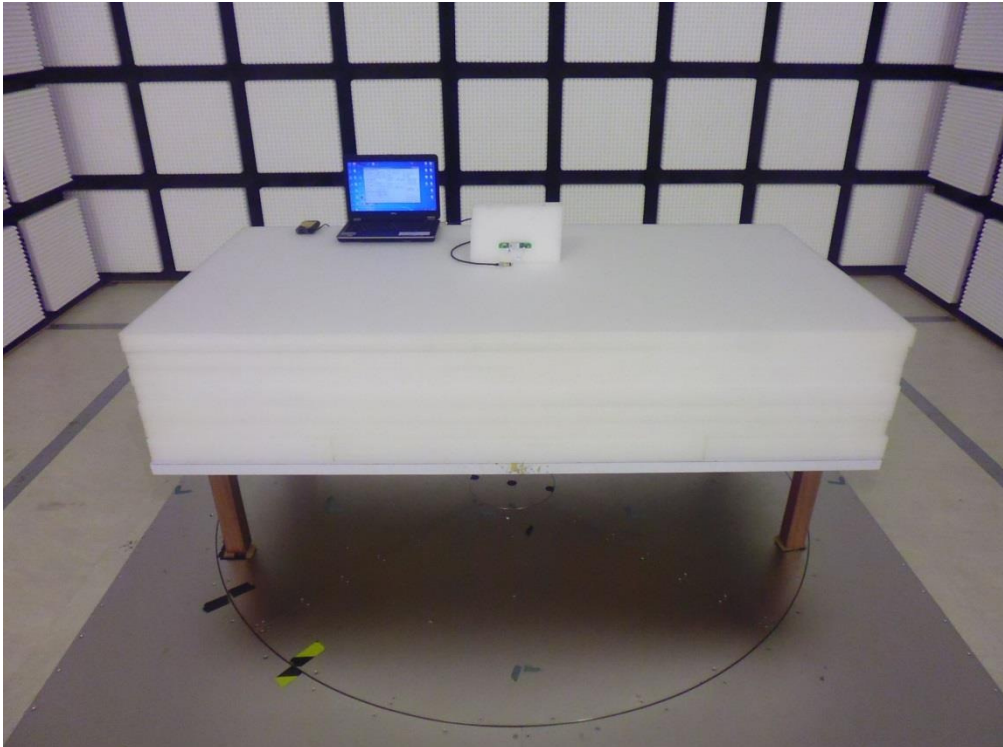
Conducted Emission Test



Conducted Emission Test



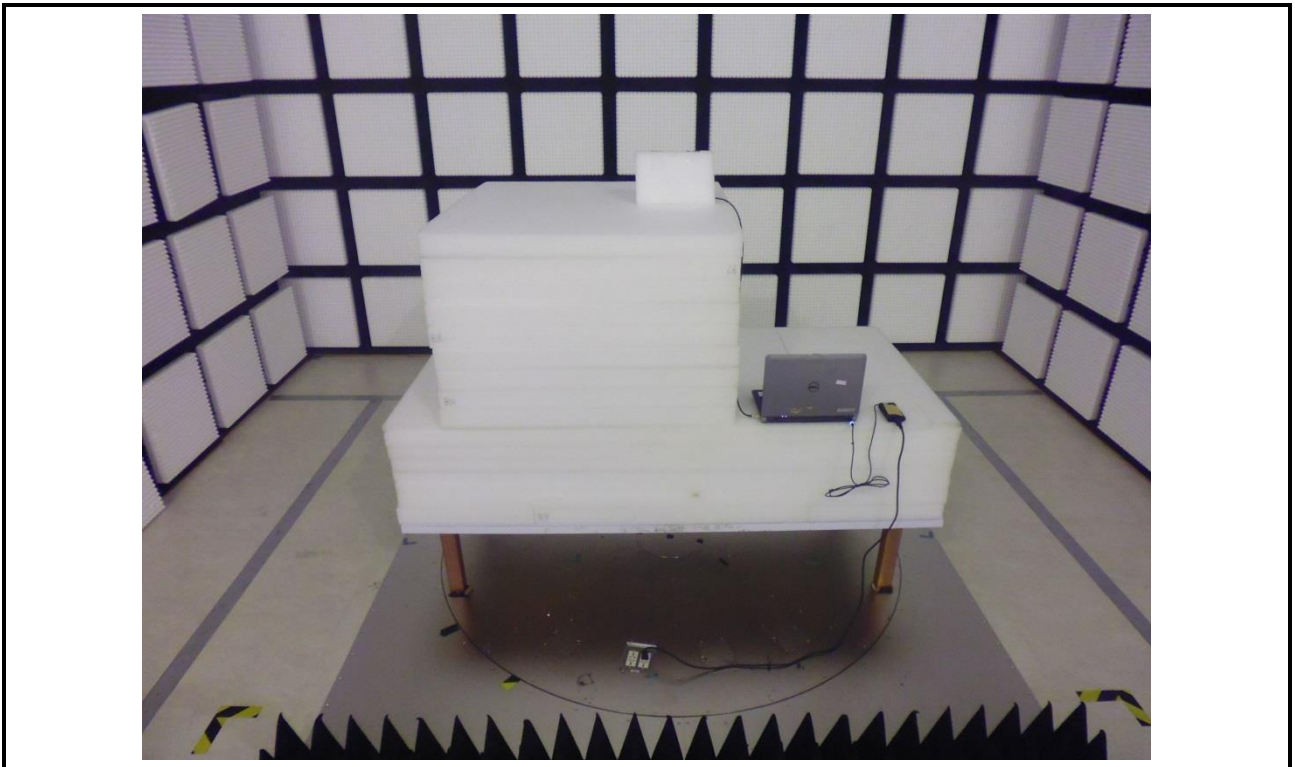
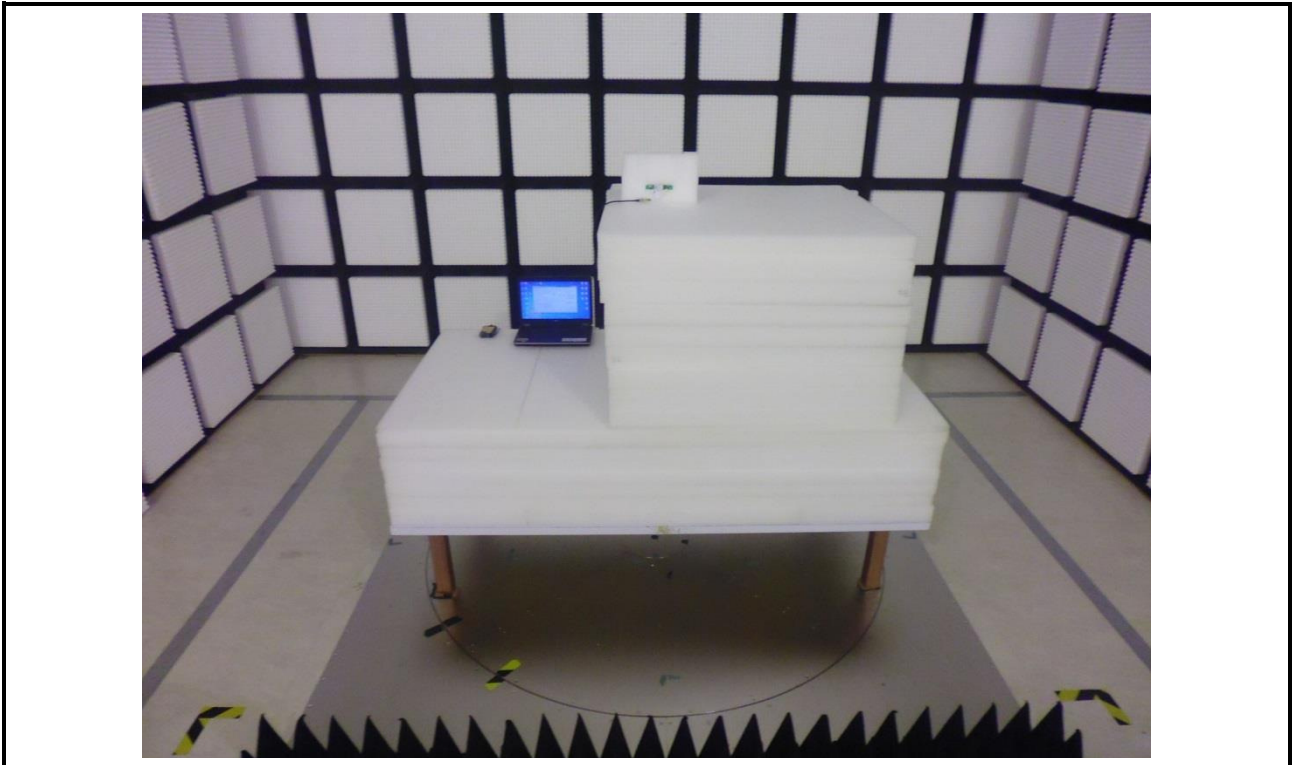
Radiated Emission Below 1GHz Test (On-board ANT0 + On-board ANT1 mode)



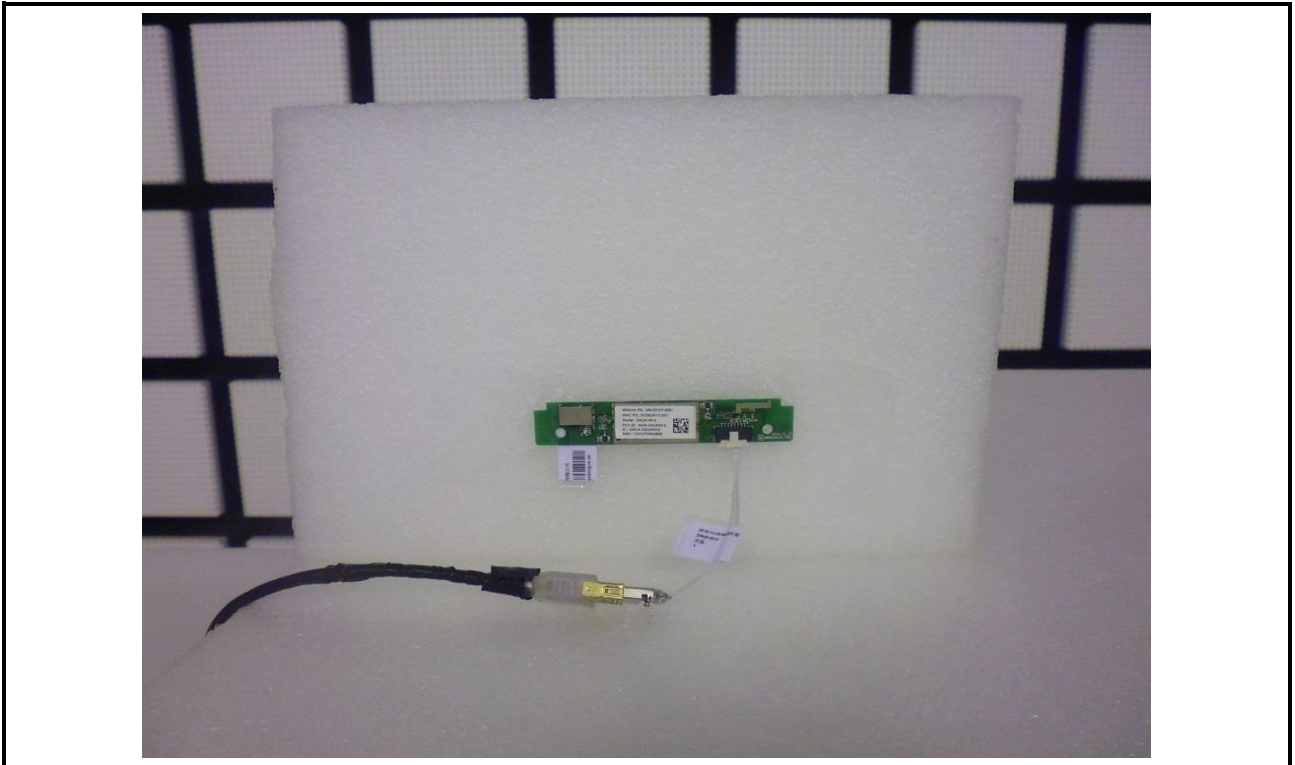
Radiated Emission Below 1GHz Test (On-board ANT0 + On-board ANT1 mode)



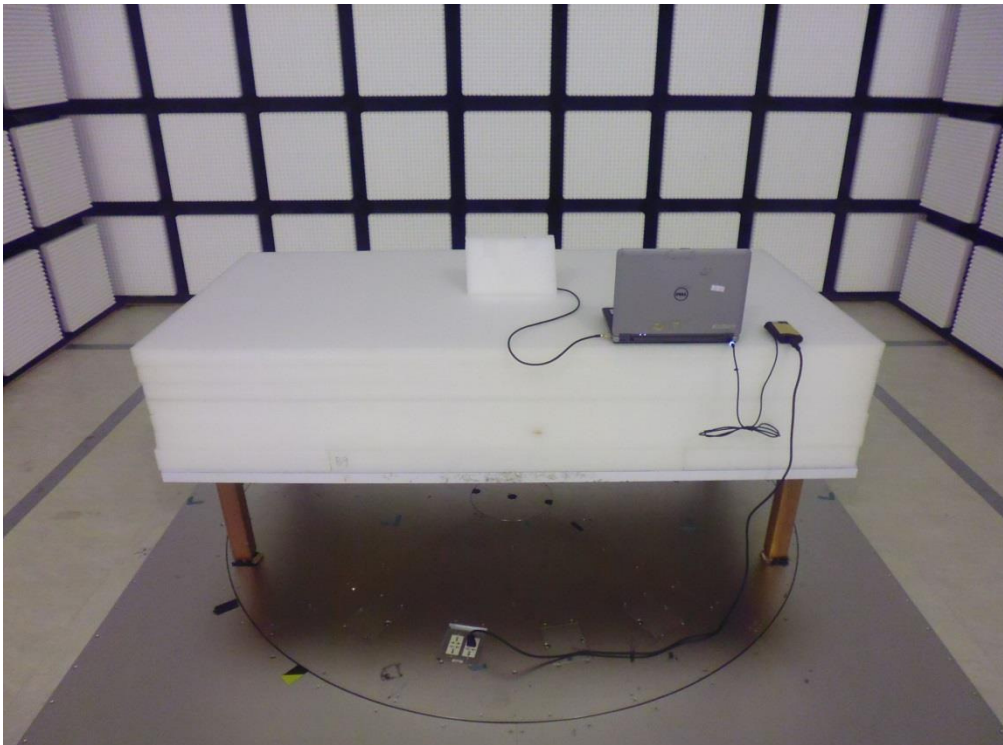
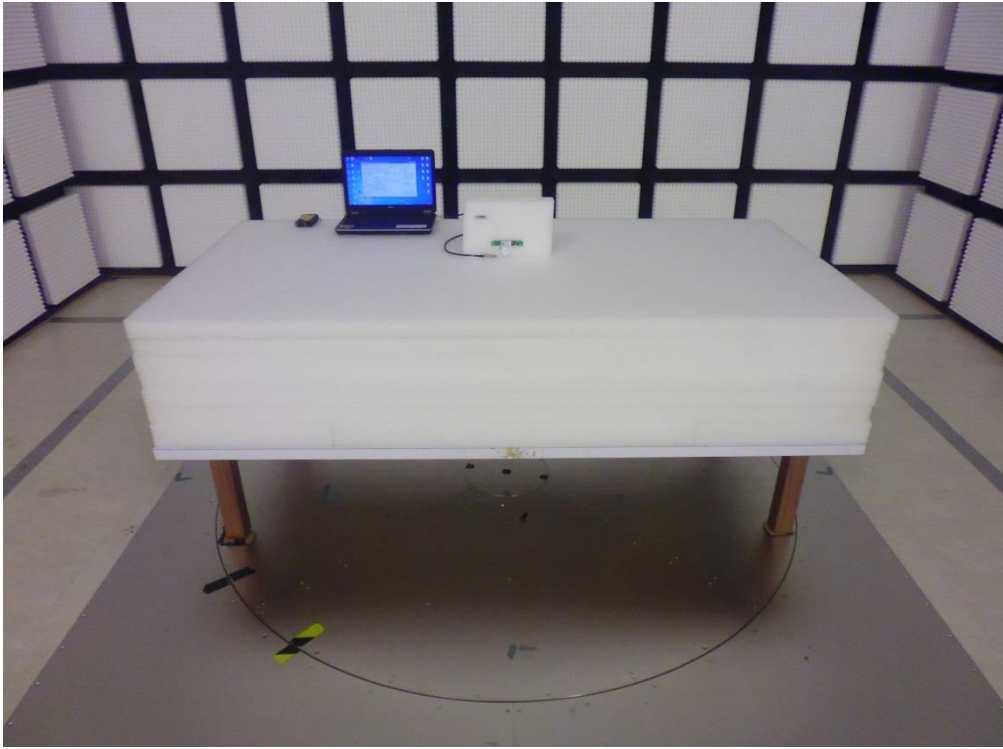
Radiated Emission Above 1GHz Test (On-board ANT0 + On-board ANT1 mode)



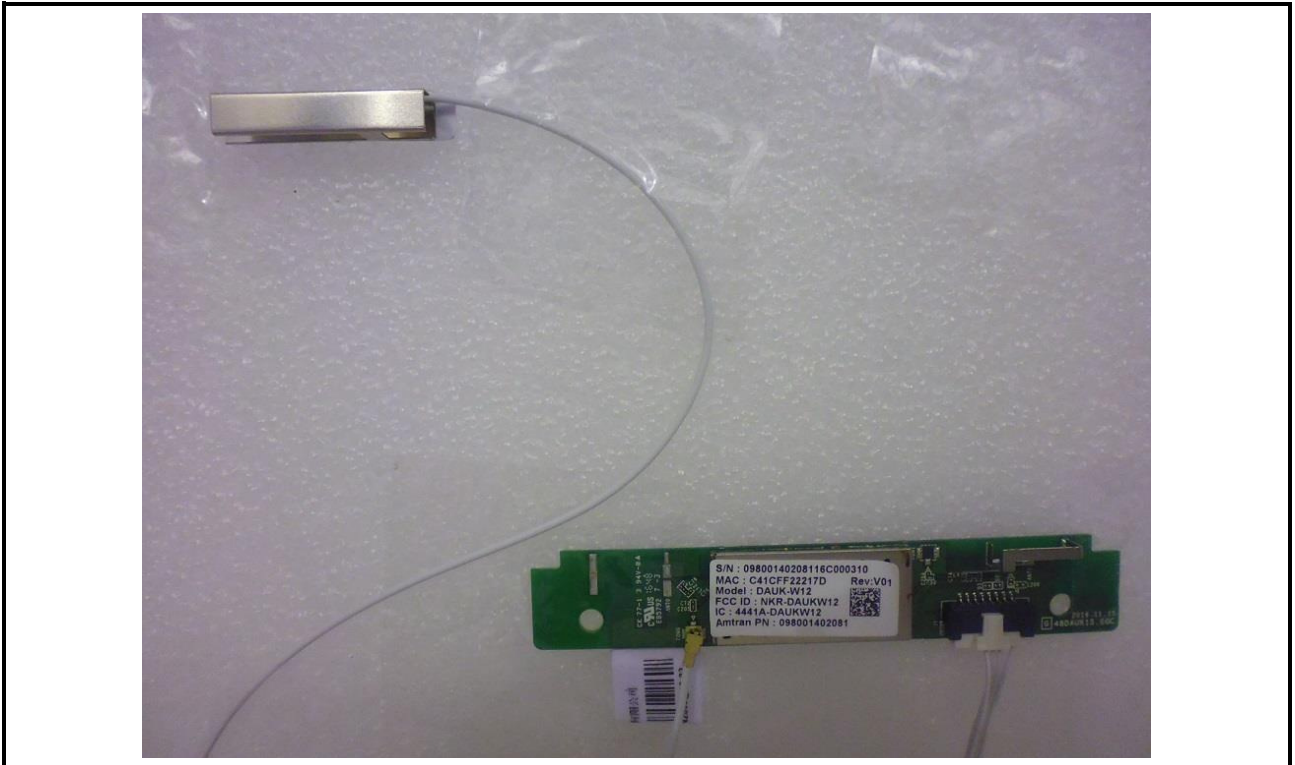
Radiated Emission Above 1GHz Test (On-board ANT0 + On-board ANT1 mode)



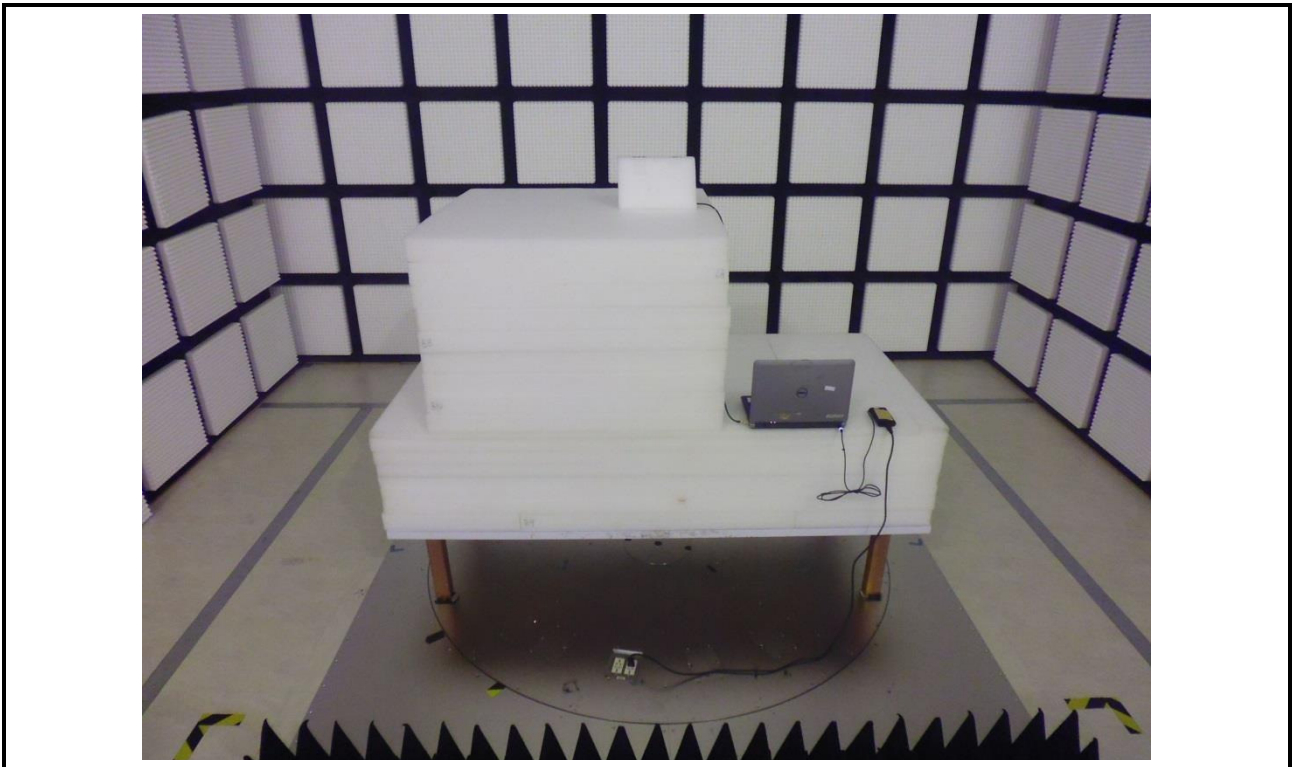
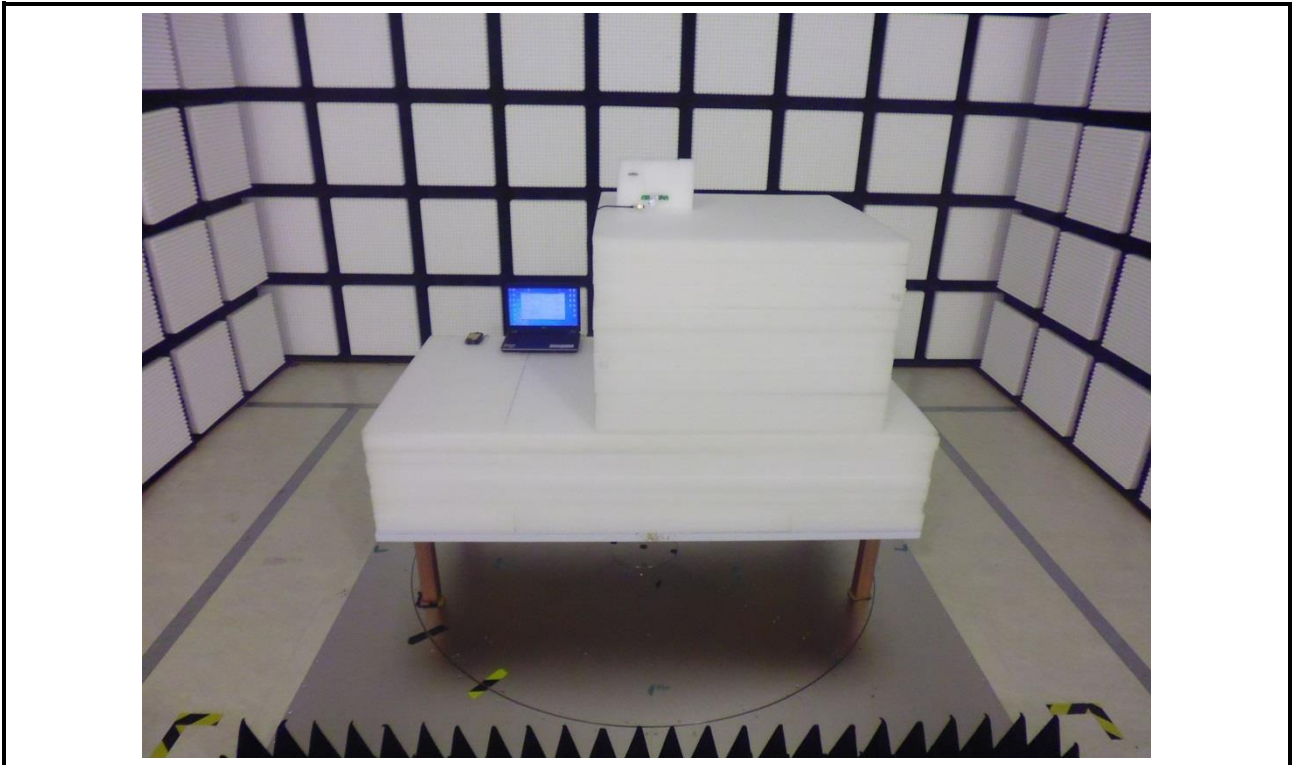
Radiated Emission Below 1GHz Test (External-Amtran + On-board ANT1 mode)



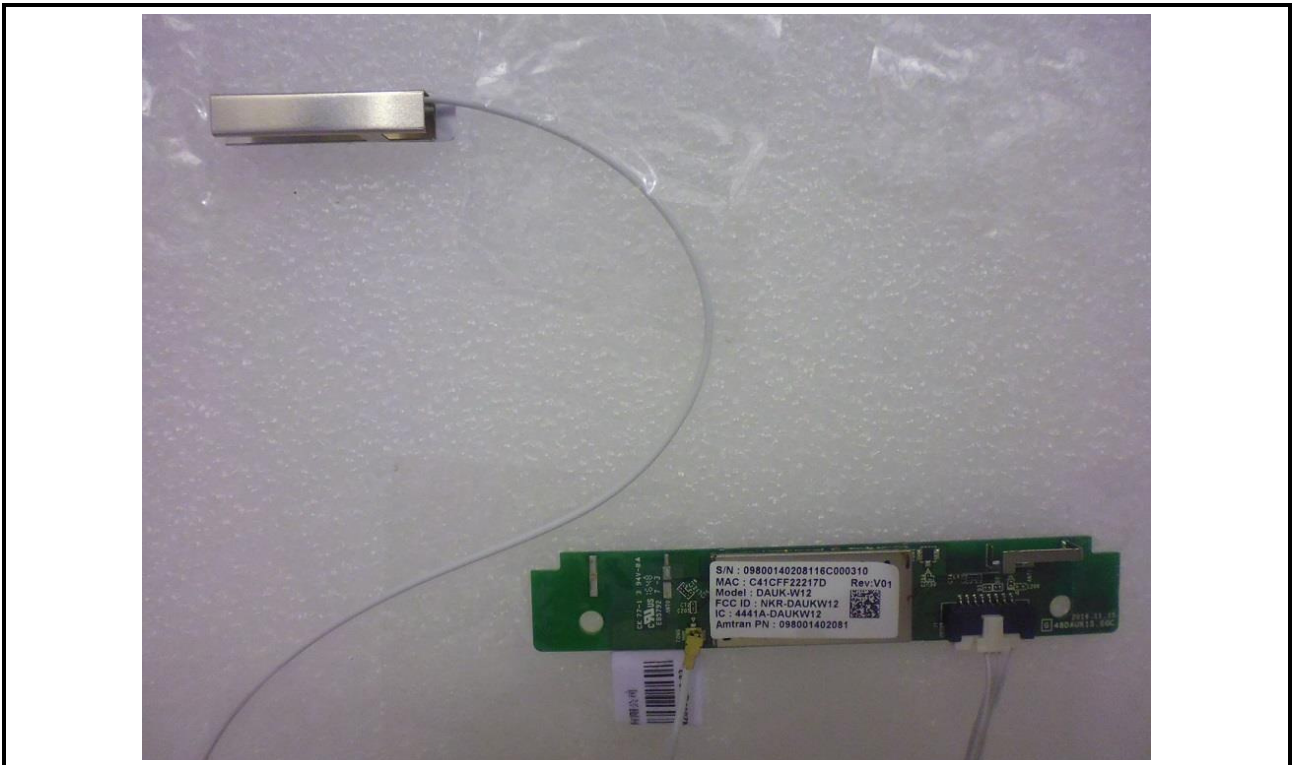
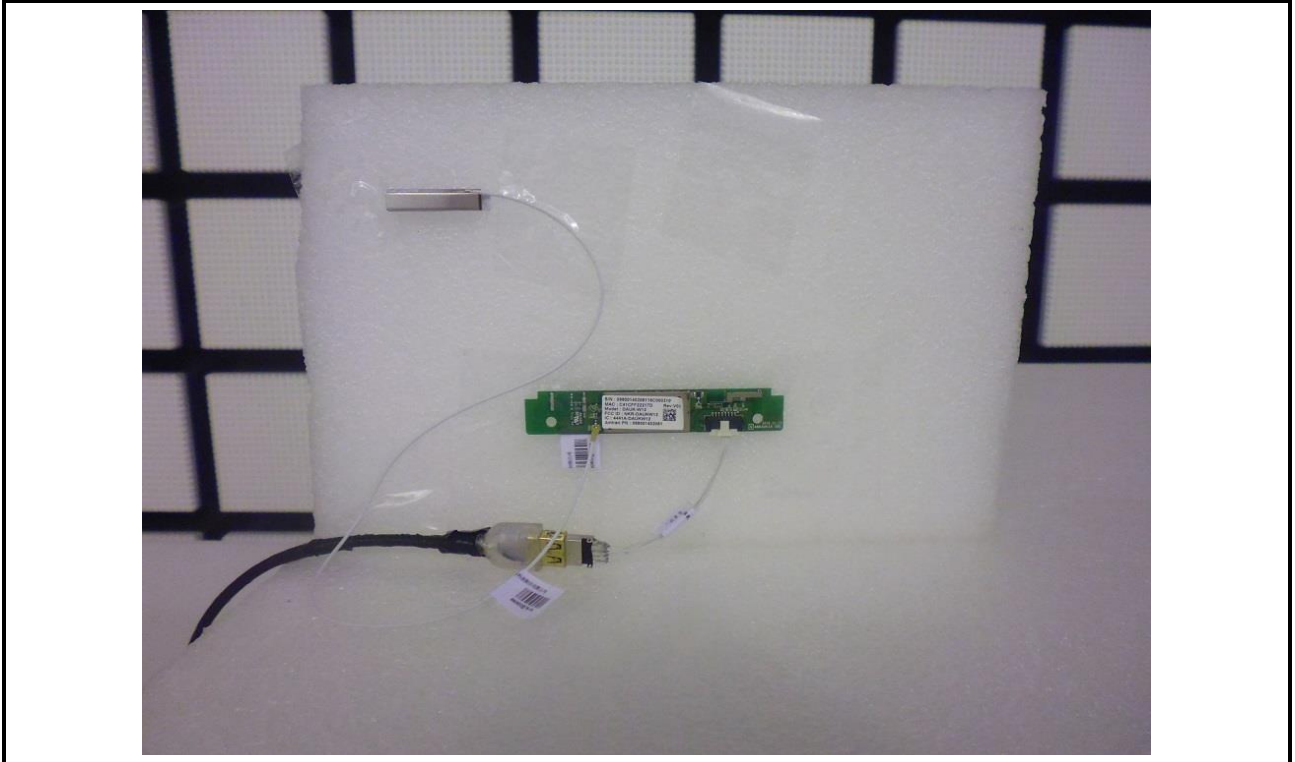
Radiated Emission Below 1GHz Test (External-Amtran + On-board ANT1 mode)



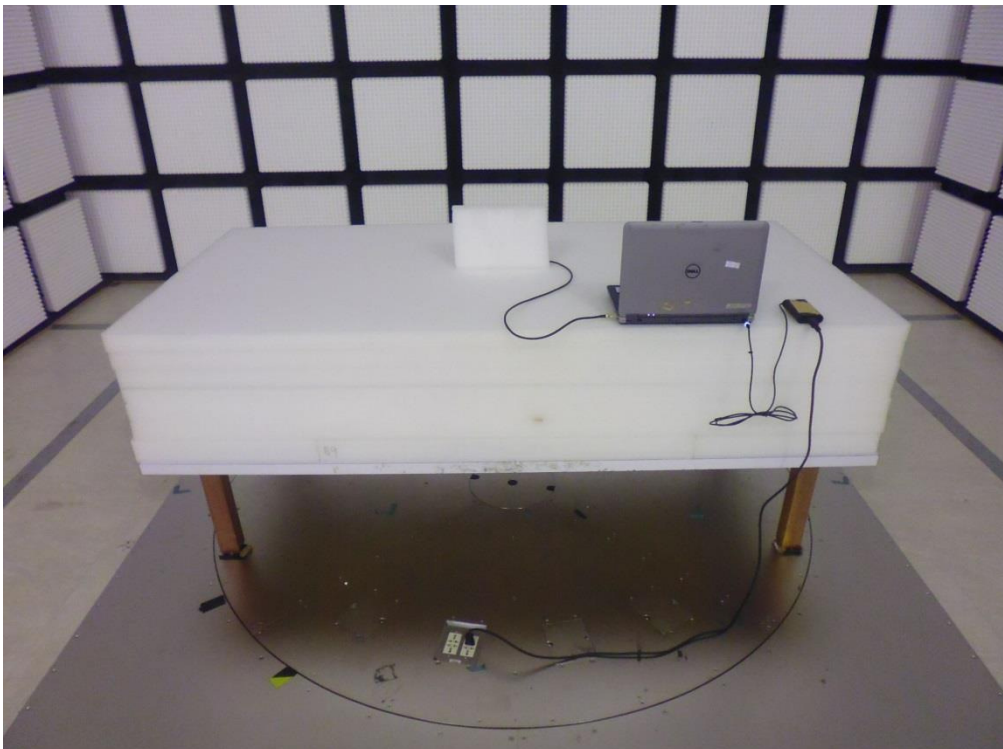
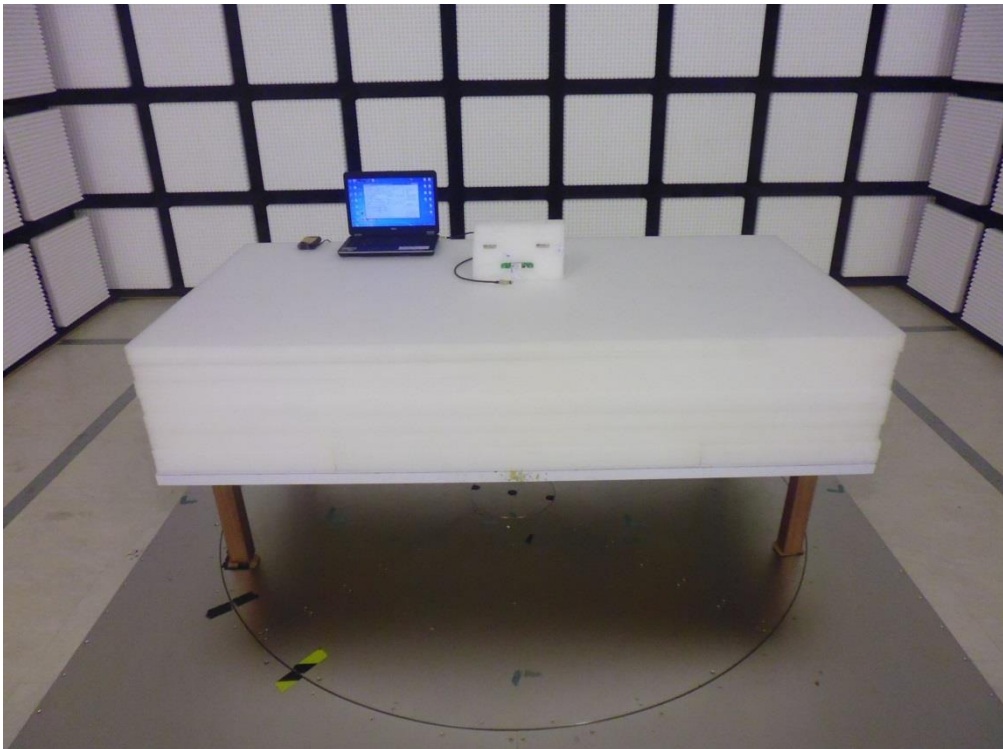
Radiated Emission Above 1GHz Test (External-Amtran + On-board ANT1 mode)



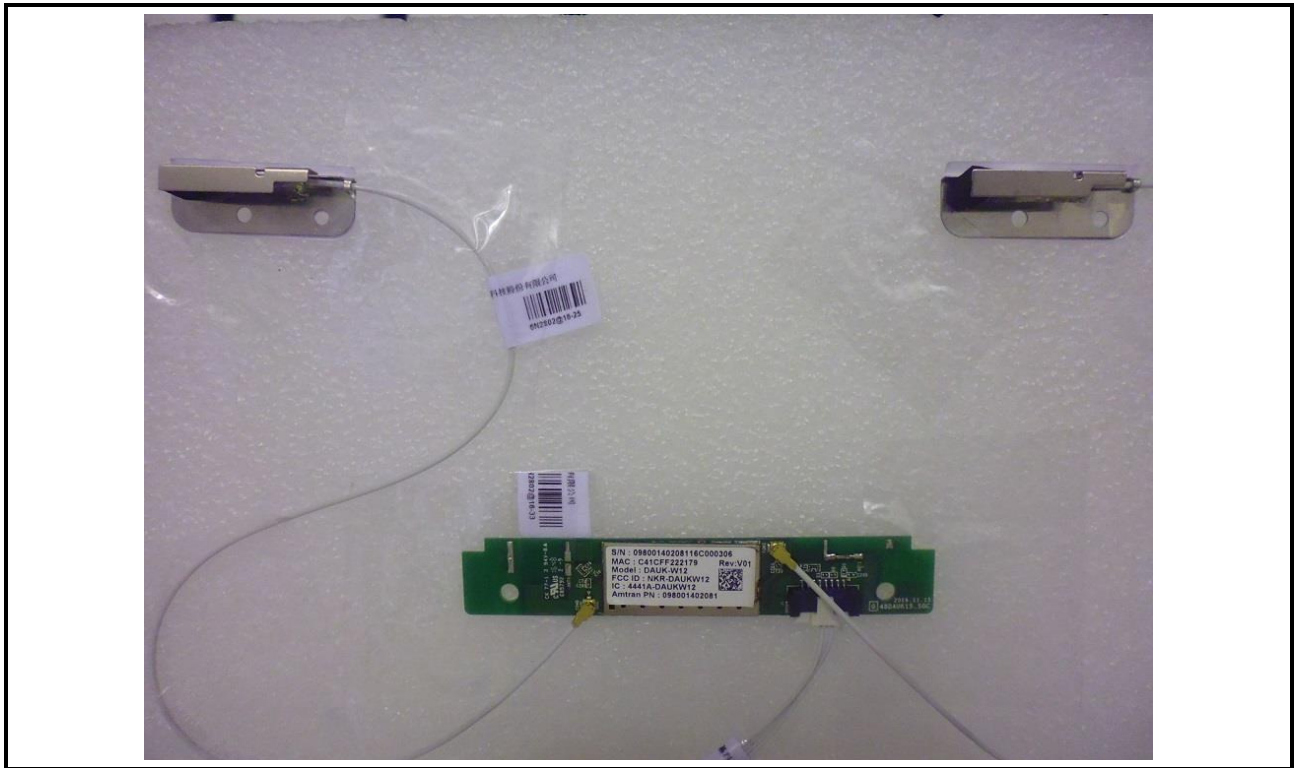
Radiated Emission Above 1GHz Test (External-Amtran + On-board ANT1 mode)



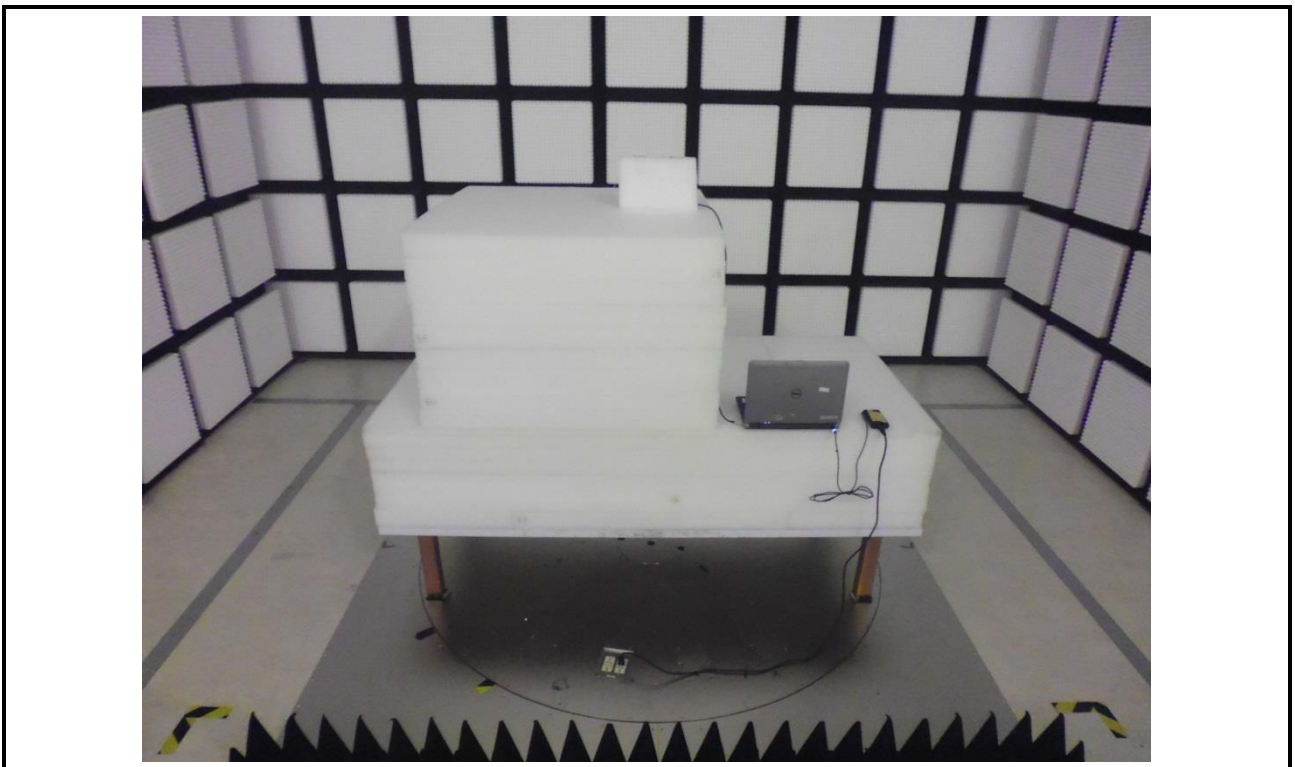
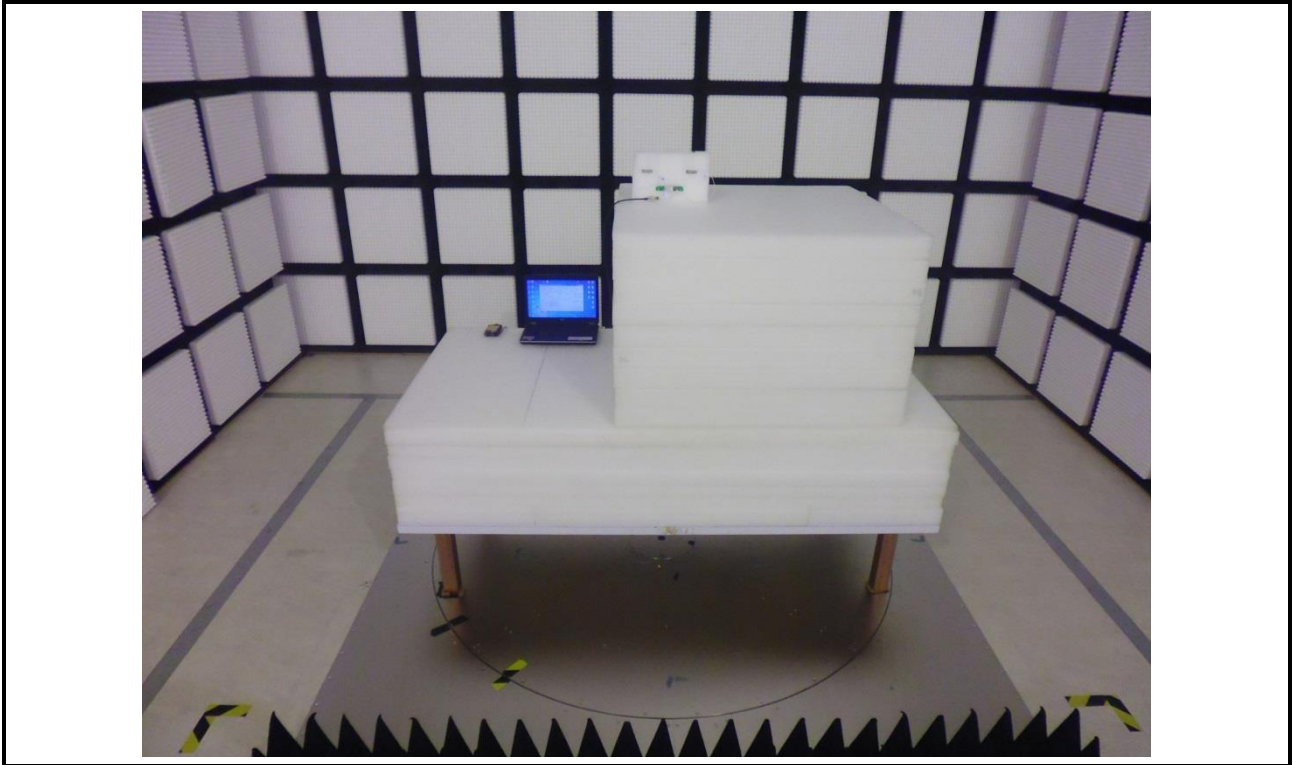
**Radiated Emission Below 1GHz Test
(External-WNC Antenna (330mm) + External-WNC Antenna (330mm) mode)**



**Radiated Emission Below 1GHz Test
(External-WNC Antenna (330mm) + External-WNC Antenna (330mm) mode)**



**Radiated Emission Above 1GHz Test
(External-WNC Antenna (330mm) + External-WNC Antenna (330mm) mode)**



**Radiated Emission Above 1GHz Test
(External-WNC Antenna (330mm) + External-WNC Antenna (330mm) mode)**

