

Quick Start Guide

P12 Pro



EN JA

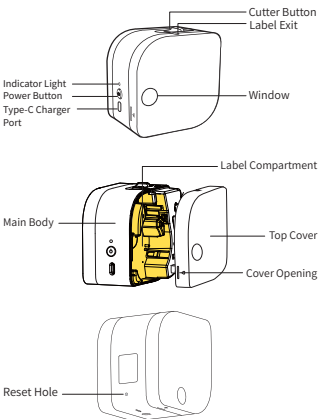
1. Product Introduction

1.1 Packing List



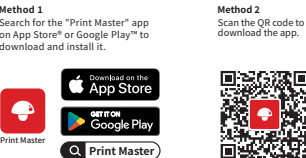
Note: The complimentary ribbon has been installed in the printer and can be seen through the Window.

1.2 Printer Parts Instruction

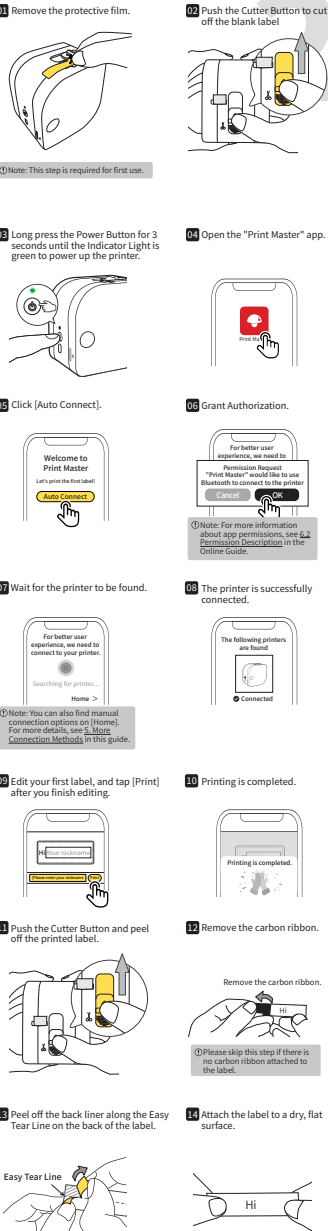


2. Getting Started

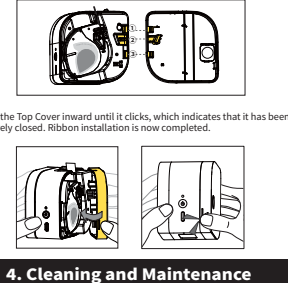
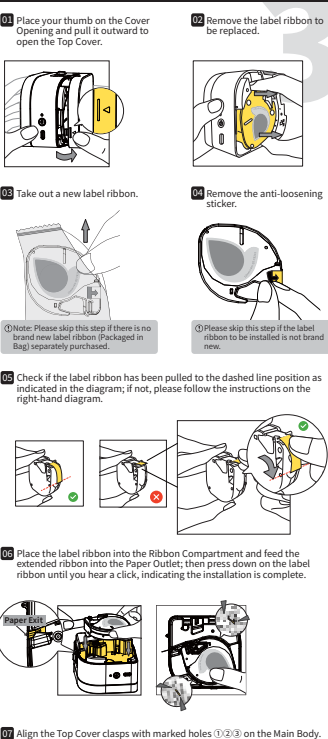
2.1 Downloading the App



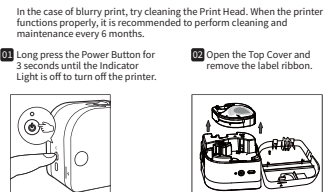
2.2 User Guide



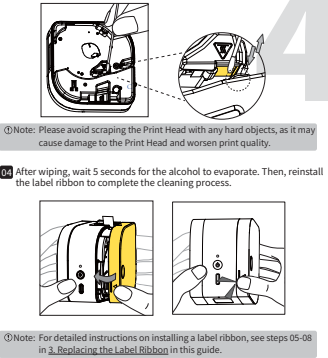
3. Replacing the Label Ribbon



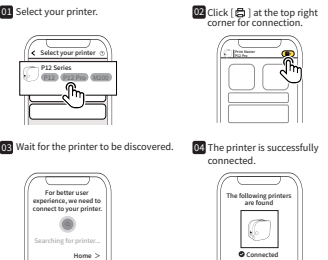
4. Cleaning and Maintenance



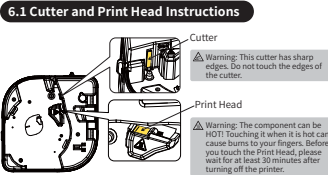
03 Use a cotton swab dipped in a small dab of alcohol to gently wipe the Print Head up and down about 10 times.



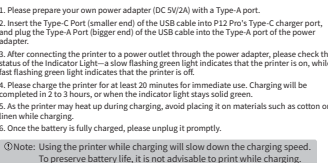
5. More Connection Methods



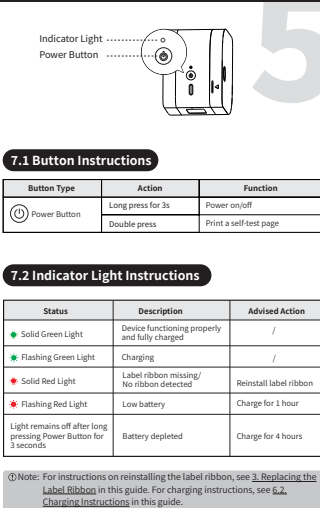
6. Safety Instructions



6.2 Charging Instructions



7. Additional Instructions



FCC Warning statement

This device complies with part 15 of the FCC Rules. Operation is subject to the following two conditions: (1) This device may not cause harmful interference, and (2) this device must accept any interference received, including interference that may cause undesired operation. Any Changes or modifications not expressly approved by the party responsible for compliance could void the user's authority to operate the equipment. This equipment has been tested and found to comply with the limits for a Class B digital device, pursuant to part 15 of the FCC Rules. These limits are designed to provide reasonable protection against harmful interference in a residential installation. This equipment generates uses and can radiate radio frequency energy and, if not installed and used in accordance with the instructions, may cause harmful interference to radio communications. However, there is no guarantee that interference will not occur in a particular installation. If this equipment does cause harmful interference to radio or television reception, which can be determined by turning the equipment off and on, the user is encouraged to try to correct the interference by one or more of the following measures: - Reorient or relocate the receiving antenna. - Increase the separation between the equipment and receiver. - Connect the equipment into an outlet on a circuit different from that to which the receiver is connected. - Consult the dealer or an experienced radio/TV technician for help. FCC RF exposure statement: The device has been evaluated to meet general RF exposure requirement. The device can be used in portable exposure condition without restriction.

IC Warning statement

This device contains licence-exempt transmitter(s)/receiver(s) that comply with Innovation, Science and Economic Development Canada's licence-exempt RSS(s). Operation is subject to the following two conditions: 1. This device may not cause interference. 2. This device must accept any interference, including interference that may cause undesired operation of the device. L' émetteur/récepteur exempt de licence contenu dans le présent appareil est conforme aux CNR d' Innovation, Sciences et Développement économique Canada applicables aux appareils radio exempts de licence. L' exploitation est autorisée aux deux conditions suivantes: 1. L' appareil ne doit pas produire de brouillage; 2. L' appareil doit accepter tout brouillage radioélectrique subi, même si le brouillage est susceptible d' en compromettre le fonctionnement. IC RF exposure statement: The device has been evaluated to meet general IC RF exposure requirement. The device can be used in portable exposure condition without restriction. IC Déclaration d'exposition aux RF: L'appareil a été évalué pour répondre aux exigences générales d'exposition aux RF d'IC. L'appareil peut être utilisé dans des conditions d'exposition portable sans restriction.

8. Warranty Card

Exchange Return

Customer Information	Name:
	Sex:
	Telephone:
Product Information	Address:
	Date of purchase:
	Order no:
Return/Exchange Form	Serial no:
	Reason for Return/Exchange:

Special Notes

The company takes full responsibility for the revision and explanation of this manual, with utmost care taken to ensure its accuracy. However, please note that any technical improvements to the product may not be separately notified, and that the images of the product, accessories, software interfaces, etc. in this manual are for illustrative purposes and reference only. Due to product updates and upgrades, the actual product may be slightly different from the images. Please rely on the actual product for all details.