
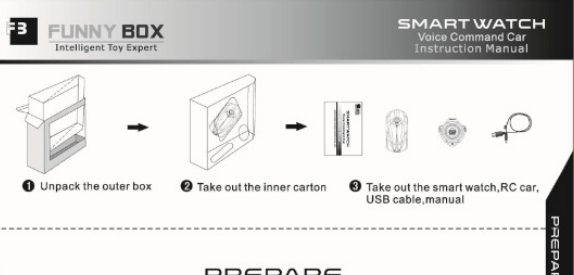


## 1.6 User Manual



**SMART WATCH**  
Voice Command Car  
Instruction Manual

SHEN ZHEN FUN BOX INDUSTRY CO.,LTD



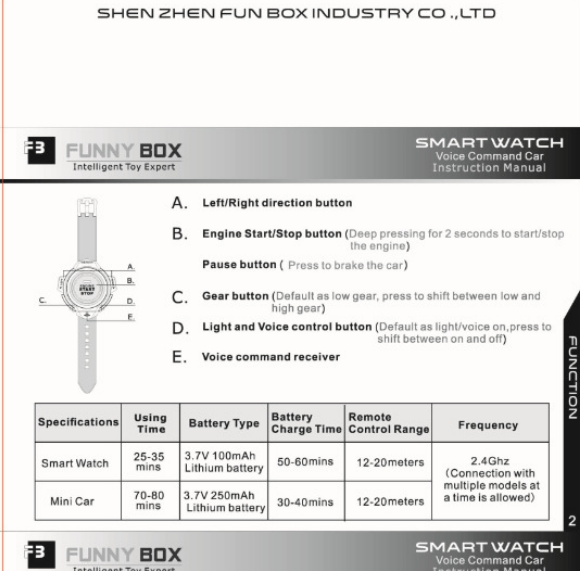
**FUNNY BOX**  
Intelligent Toy Expert

**SMART WATCH**  
Voice Command Car  
Instruction Manual

1. Unpack the outer box 2. Take out the inner carton 3. Take out the smart watch, RC car, USB cable, manual

**PREPARE**

Mini Car X 1 Smart Watch X 1 USB power cord X 1 Instruction Manual X 1

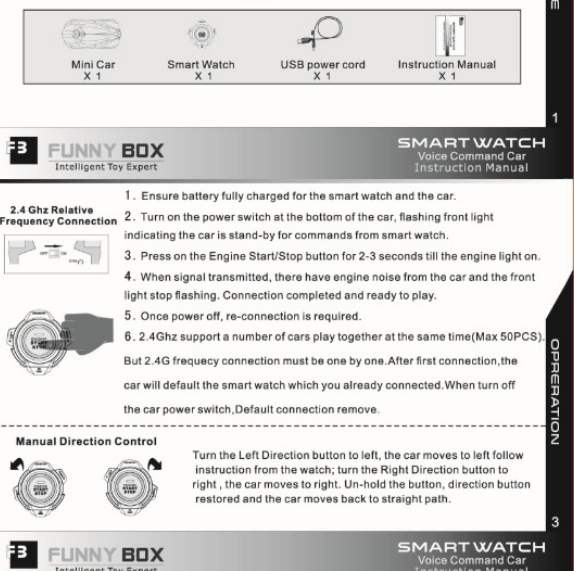


**FUNNY BOX**  
Intelligent Toy Expert

**SMART WATCH**  
Voice Command Car  
Instruction Manual

**A. Left/Right direction button**  
**B. Engine Start/Stop button** (Deep pressing for 2 seconds to start/stop the engine)  
**Pause button** ( Press to brake the car)  
**C. Gear button** (Default as low gear, press to shift between low and high gear)  
**D. Light and Voice control button** (Default as light/voice on, press to shift between on and off)  
**E. Voice command receiver**

Specifications	Using Time	Battery Type	Battery Charge Time	Remote Control Range	Frequency
Smart Watch	25-35 mins	3.7V 100mAh Lithium battery	50-60mins	12-20meters	2.4Ghz (Connection with multiple models at a time is allowed)
Mini Car	70-80 mins	3.7V 250mAh Lithium battery	30-40mins	12-20meters	



**FUNNY BOX**  
Intelligent Toy Expert

**SMART WATCH**  
Voice Command Car  
Instruction Manual

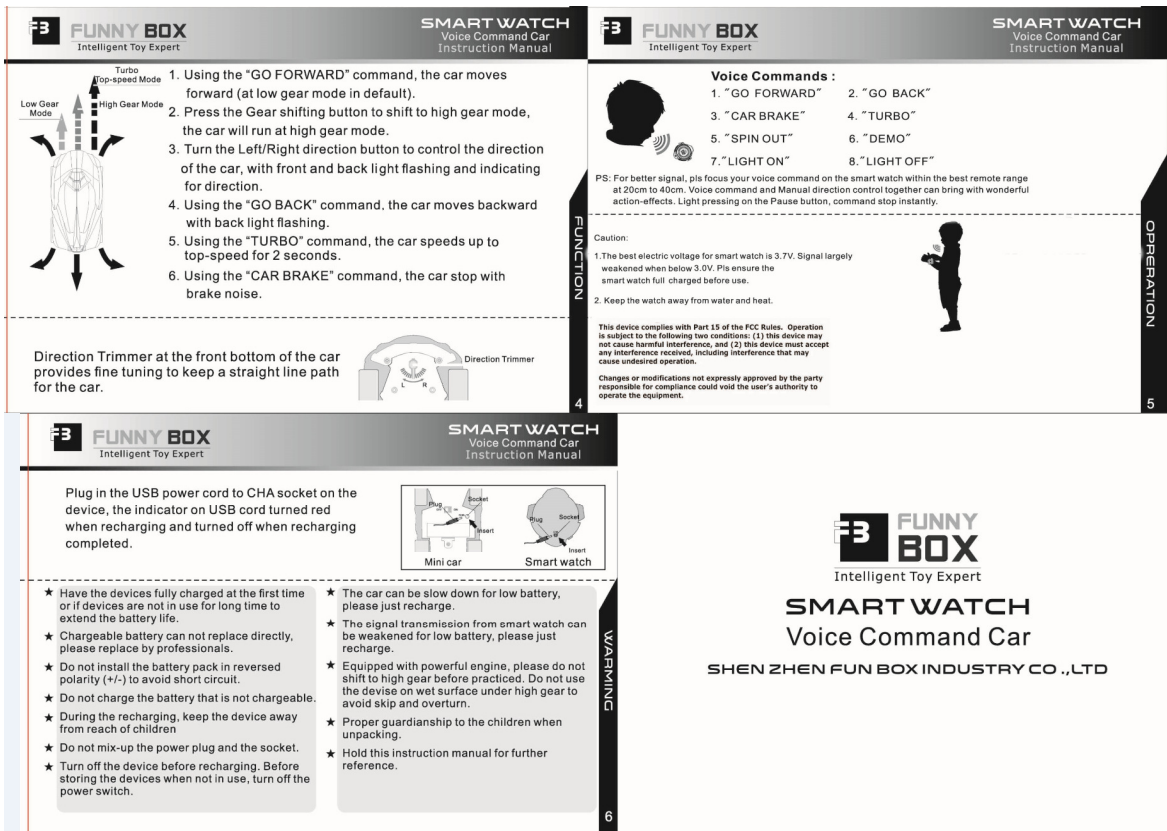
**2.4 Ghz Relative Frequency Connection**

1. Ensure battery fully charged for the smart watch and the car.
2. Turn on the power switch at the bottom of the car, flashing front light indicating the car is stand-by for commands from smart watch.
3. Press on the Engine Start/Stop button for 2-3 seconds till the engine light on.
4. When signal transmitted, there have engine noise from the car and the front light stop flashing. Connection completed and ready to play.
5. Once power off, re-connection is required.
6. 2.4Ghz support a number of cars play together at the same time(Max 50PCS). But 2.4G frequency connection must be one by one. After first connection, the car will default the smart watch which you already connected. When turn off the car power switch, Default connection remove.

**Manual Direction Control**

Turn the Left Direction button to left, the car moves to left follow instruction from the watch; turn the Right Direction button to right, the car moves to right. Un-hold the button, direction button restored and the car moves back to straight path.

Model: 208001-88



Model: 208001-88