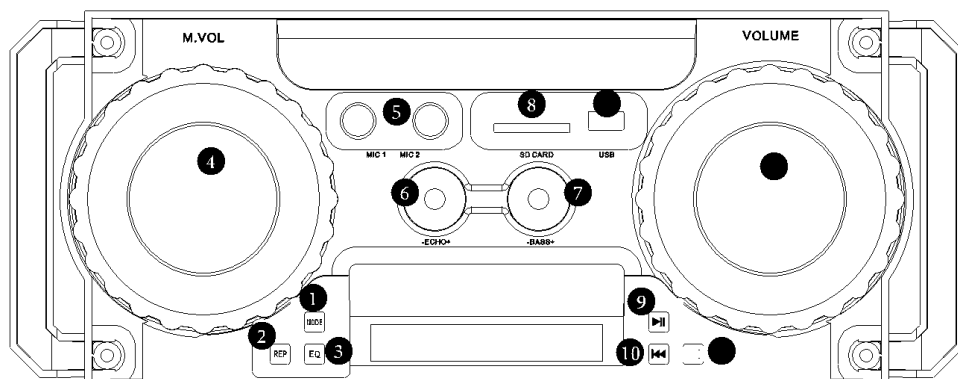


CONTROL PANEL



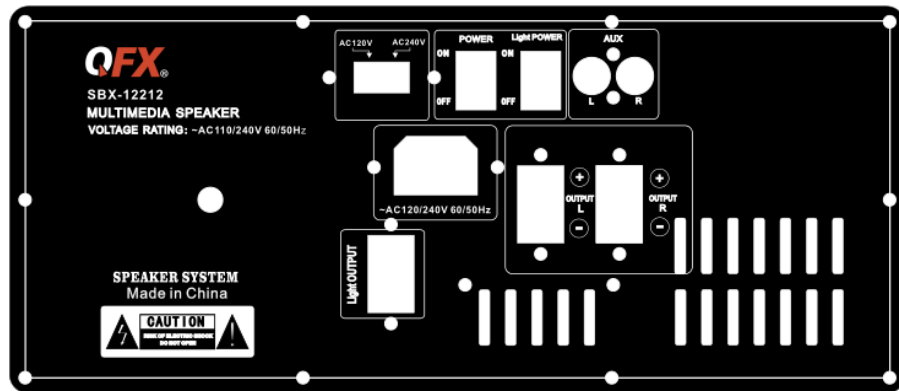
1	Mode Select Button
2	Playback / Loopback Button
3	EQ Mode Select Button
4	Microphone Volume
5	Wired Microphone Input 1 & 2
6	Microphone Echo Effect Knob
7	BASS Knob
8	SD Card Socket
9	Pause / Play Button Recording and Playback Function Keys (Long press)
10	Previous Track / FM Station Button
11	Next Track / FM Station Button
12	USB Storage Input Port
13	Main Volume

QUICK USER GUIDE



SBX-12212

Back panel



LED LIGHTS ON / OFF SWITCH

Press and hold the LIGHT ON / OFF Switch to turn the lights ON and again to turn the speaker off.

ON / OFF SWITCH

Press and hold the ON / OFF Switch to turn the speaker ON and again to turn the speaker off.

VOLUME

Turn the volume knob anti-clockwise to decrease the volume and clockwise to increase the volume.

PREVIOUS / NEXT BUTTON

To search for a specific song to playback, press the PREVIOUS / NEXT button to either go forward or backwards through track keys.

LINE IN JACK

1. Connect a 3.5mm Audio Cable (included) to the LINE IN JACK of the unit and to your external audio devices eg. MP3 player or Discman etc
2. Then select the LINE feature by pressing the MODE button.
3. Then press PLAY / PAUSE button to begin playback

FM RADIO

1. Select FM (mode) feature by pressing the MODE button.
2. Press the PLAY / PAUSE button to begin automatically searching and saving available radio stations.
3. Press PREVIOUS / NEXT button to select a specific radio station.

NOTE: PLEASE MOVE YOUR SPEAKER, TO ENSURE BEST RECEPTION

USB / SD JACK

1. Insert USB drive or SD card for playback
2. Playback will begin automatically
3. Press the PLAY / PAUSE button to pause and play
4. Press PREVIOUS / NEXT button to select a specific track for playback.

BLUETOOTH

1. Select the BT (Bluetooth) feature by pressing the MODE button
2. Turn the Bluetooth feature on your portable device
3. Find and pair with your "QFX SBX-12212" speaker
4. Press the PLAY / PAUSE button to begin playback

MIC IN JACK

Plug in the wired microphone. Wired microphone is then ready to use. Wireless microphone is ready to use after turning up the mic. Volume.

RECORDER FUNCTION

1. Insert a USB Drive (Thumb Drive) / a SD card and plug in your microphone
2. Long press the PAUSE/PLAY button
3. The speaker will then display REC and begin recording.
4. To stop recording, short press the PAUSE/PLAY button again
5. To playback a recorded file, press the PAUSE/PLAY button (while your thumb drive is inserted) then press the PREVIOUS and NEXT buttons to select a track for playback.

SPECIFICATIONS

Power Output: 120W

Frequency Response: 20Hz-20KHz

Power input: AC 120V/240V

NOTE: This equipment has been tested and found to comply with the limits for a Class B digital device, pursuant to part 15 of the FCC Rules. These limits are designed to provide reasonable protection against harmful interference in a residential installation. This equipment generates uses and can radiate radio frequency energy and, if not installed and used in accordance with the instructions, may cause harmful interference to radio communications. However, there is no guarantee that interference will not occur in a particular installation. If this equipment does cause harmful interference to radio or television reception, which can be determined by turning the equipment off and on, the user is encouraged to try to correct the interference by one or more of the following measures:

- Reorient or relocate the receiving antenna.
- Increase the separation between the equipment and receiver.
- Connect the equipment into an outlet on a circuit different from that to which the receiver is connected.
- Consult the dealer or an experienced radio/TV technician for help

Changes or modifications not expressly approved by the party responsible for compliance could void the user's authority to operate the equipment.

This device complies with Part 15 of the FCC Rules. Operation is subject to the following two conditions:

- (1) this device may not cause harmful interference, and
- (2) this device must accept any interference received, including interference that may cause undesired operation.