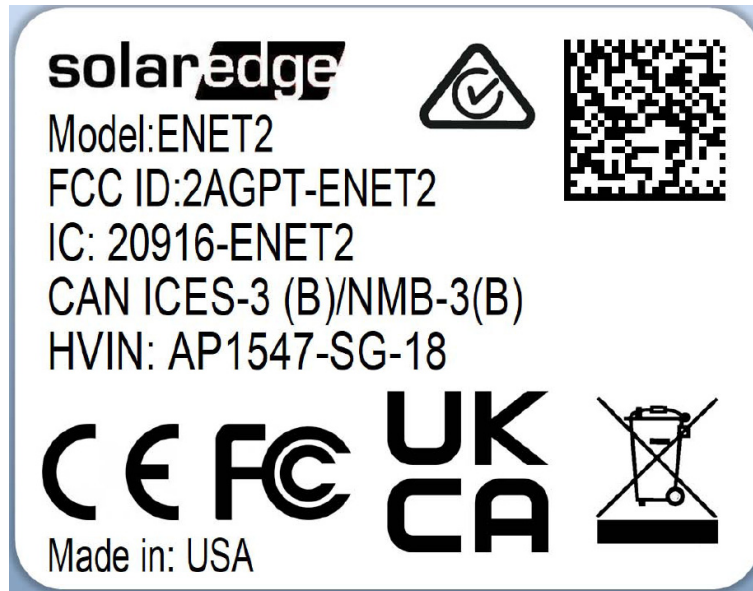


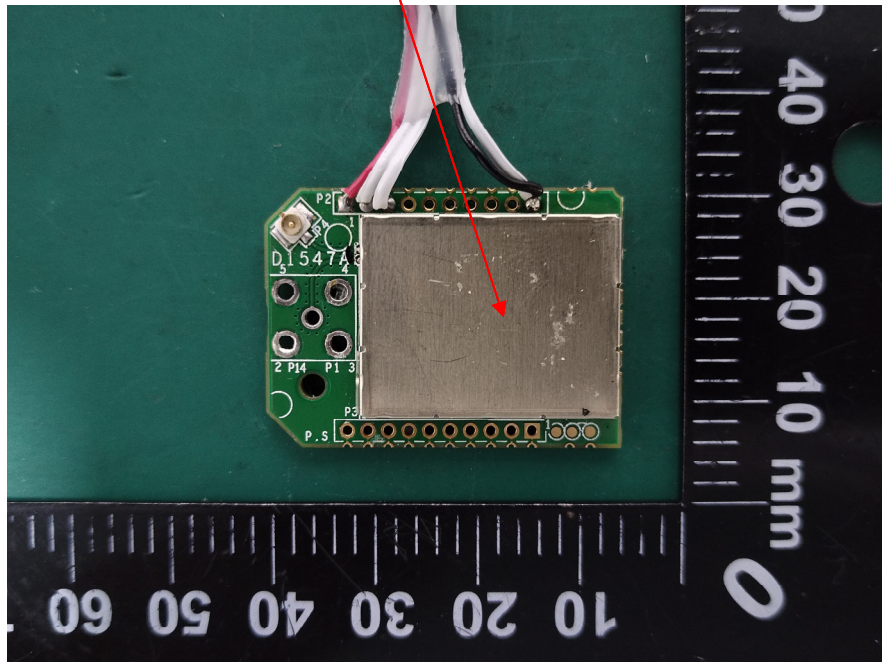
## EXHIBIT A - FCC ID LABEL AND LOCATION

With UFL Connector:

### FCC ID Label



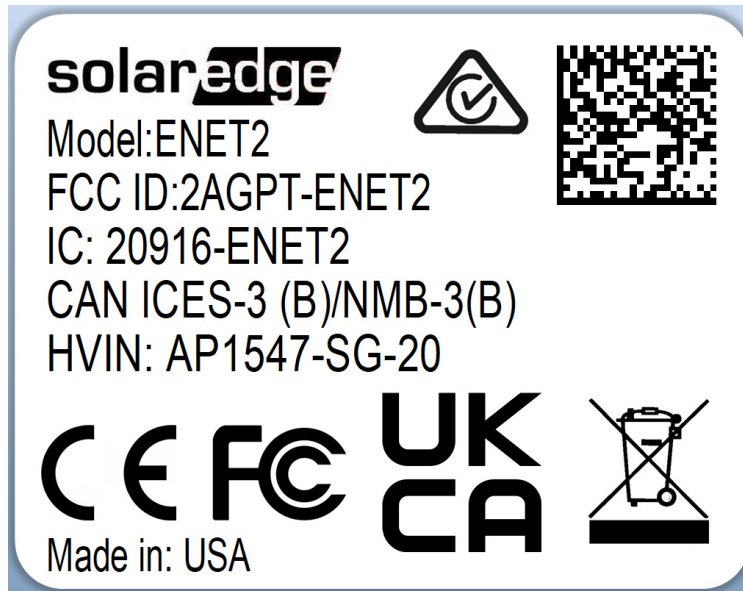
### FCC ID Label Location Information



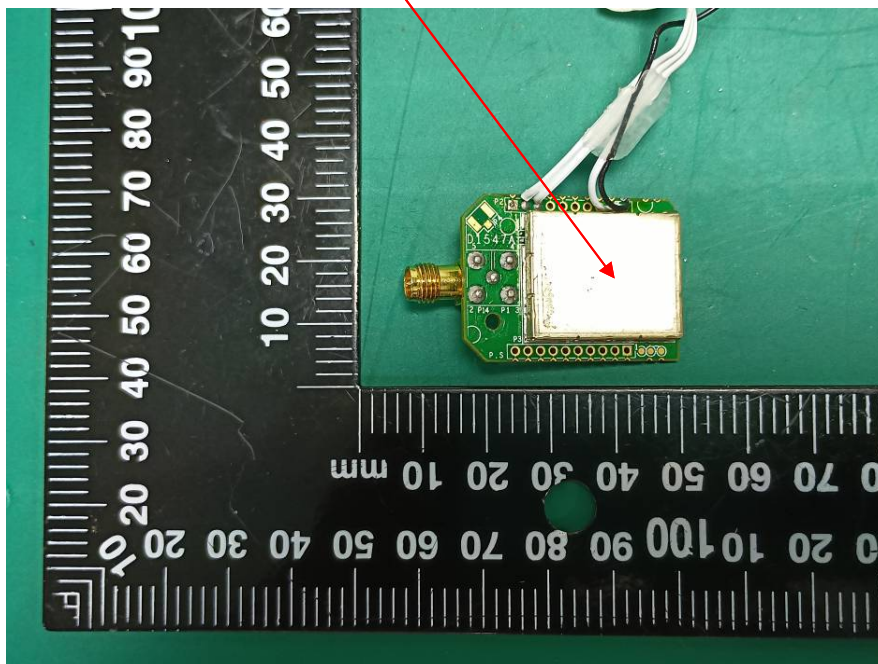
The label shown shall be permanently affixed at a conspicuous location on the device and be readily visible to the user at the time purchase (Labeling requirements per 2.925)

With RA SMA Top:

### FCC ID Label



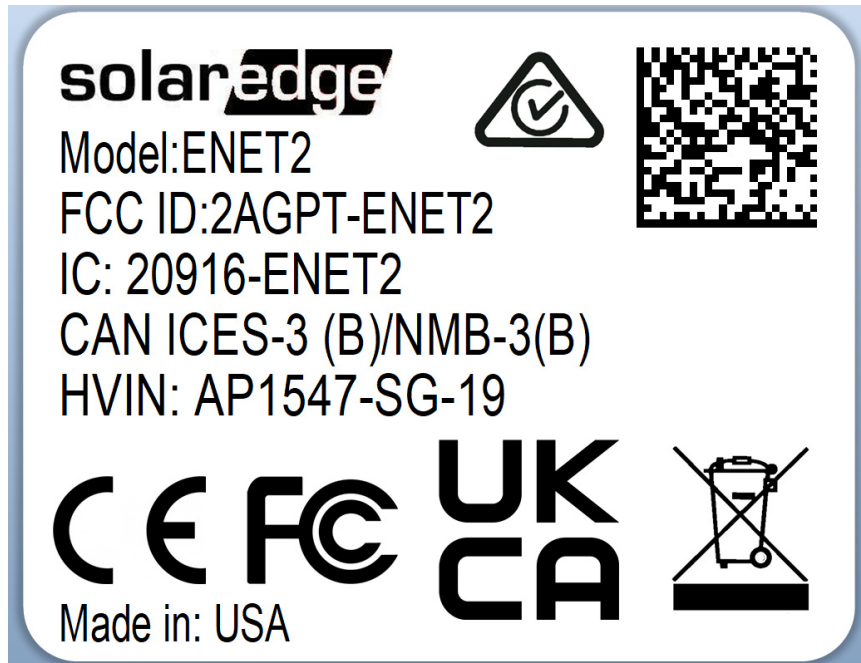
### FCC ID Label Location Information



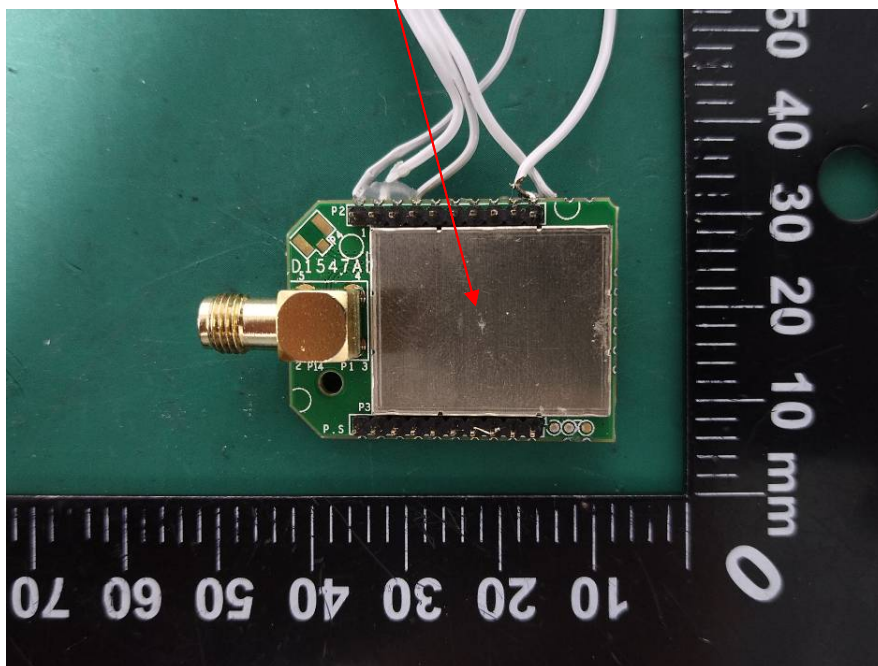
The label shown shall be permanently affixed at a conspicuous location on the device and be readily visible to the user at the time purchase (Labeling requirements per 2.925)

With RA SMA Bottom:

### FCC ID Label



### FCC ID Label Location Information

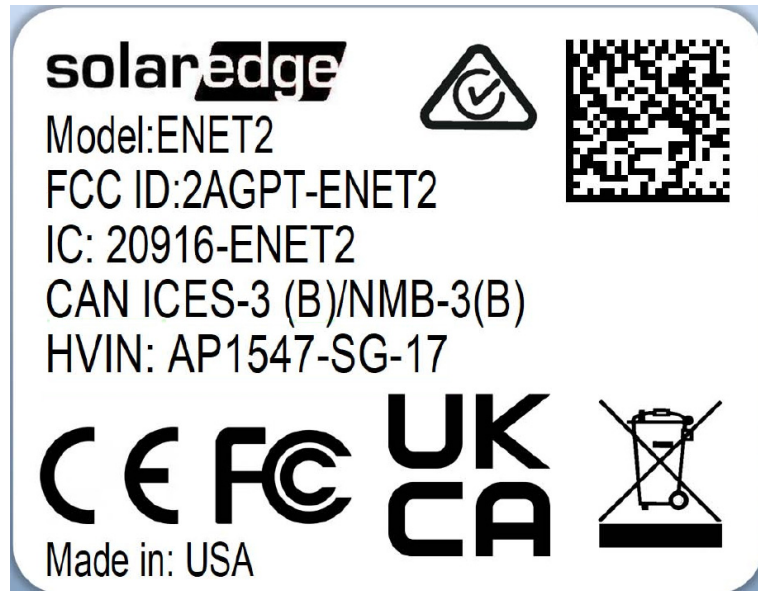


The label shown shall be permanently affixed at a conspicuous location on the device and be readily visible to the user at the time purchase (Labeling requirements per 2.925)

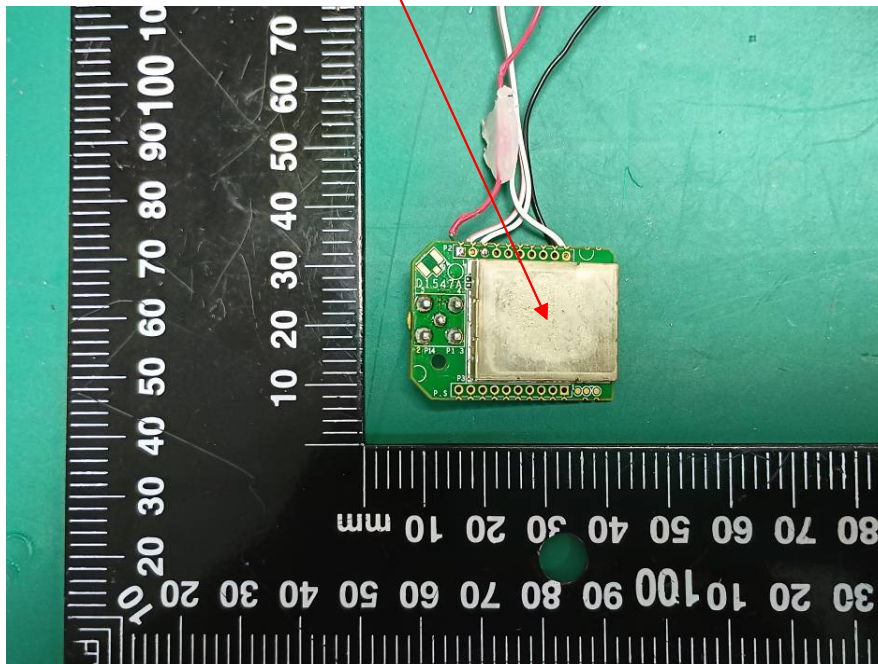


With SMA Connector (Vertical top):

**FCC ID Label**



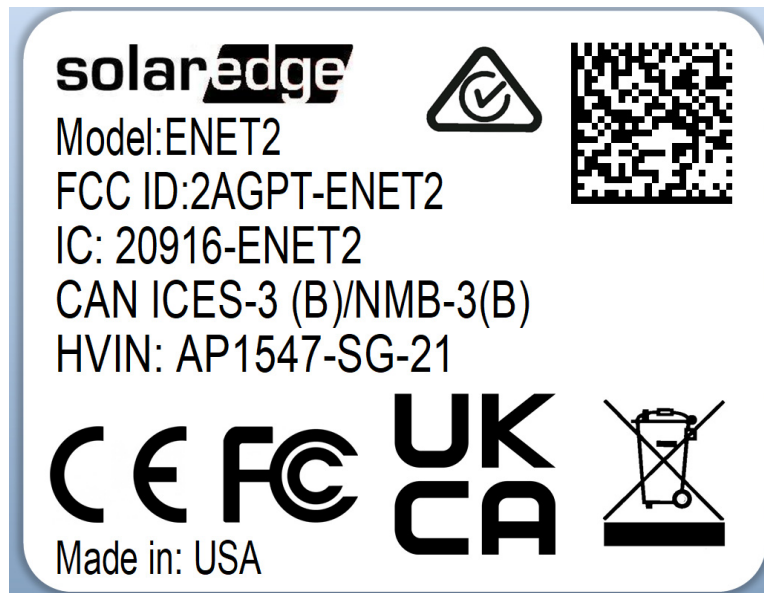
**FCC ID Label Location Information**



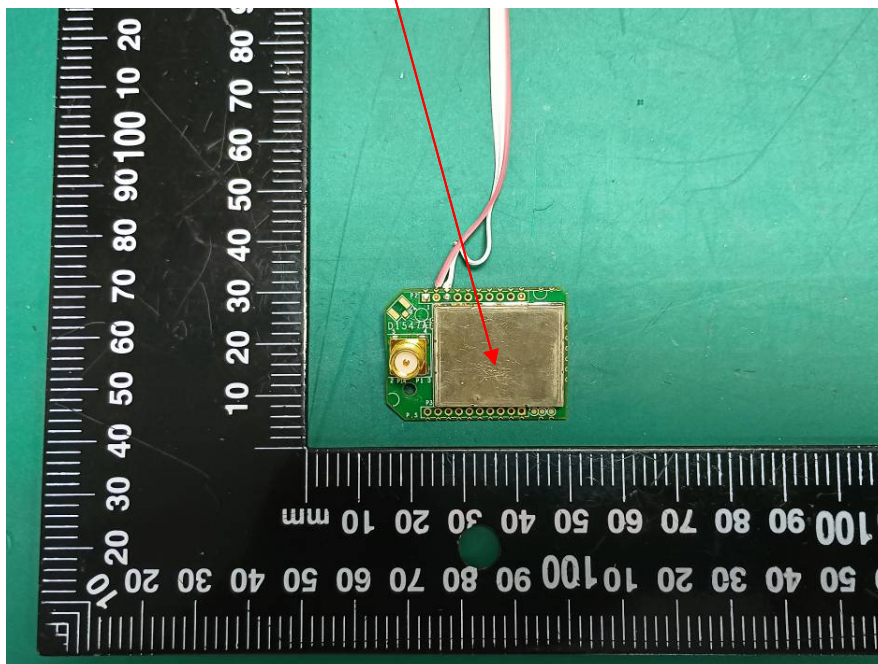
The label shown shall be permanently affixed at a conspicuous location on the device and be readily visible to the user at the time purchase (Labeling requirements per 2.925)

With SMA Connector (Vertical bottom):

### FCC ID Label



### FCC ID Label Location Information



The label shown shall be permanently affixed at a conspicuous location on the device and be readily visible to the user at the time purchase (Labeling requirements per 2.925)