



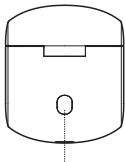
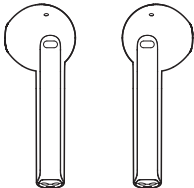
TWS200 Pro

True Wireless Stereo Earbuds

www.edifier.com



■ Product Description and Accessories



Pairing button on
the charging case



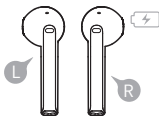
USB charging cable



Storage bag

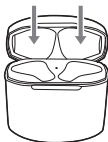
Note: Images are for illustrative purposes only and may differ from the actual product.

■ User Guide



• Charge the earbuds

- You may hear a warning tone when at low battery level, please place the earbuds in the case for charging.

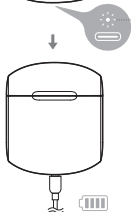


• Charge the Charging Case

- If power indicator flashes six times rapidly when the case is opened, it indicates the case has a low battery capacity, please charge it in time.
Charging time: approx. 2 hours for a full charging.

- Power indicator steady lit = charging
Power indicator off = fully charged

- Power indicator (near the charging port)

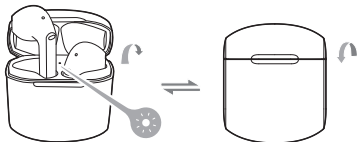


Rated input: 5V==35mA(earbuds)
5V==1A(charging case)

Warning: The rechargeable batteries that provide power for this product must be disposed properly for recycling. Do not dispose of batteries in fire to prevent an explosion.

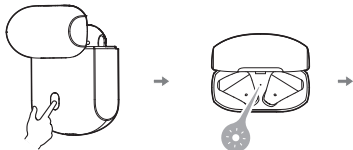
- Power on once the case is opened.

- Power off once the case is closed.



White light lit for 1 second

• Pairing

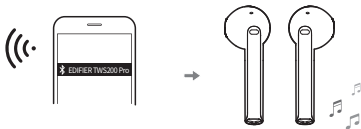


- Place earbuds in the case, and double click the pairing button to enter Bluetooth pairing

- Bluetooth pairing: red and white lights flashes

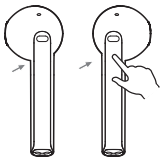
- Place earbuds in the case, and press and hold the pairing button for approx. 8 seconds to enter TWS pairing mode and clear pairing list

- TWS pairing: white light flashes rapidly



Please search for and connect to either "EDIFIER TWS200 Pro", after pairing is successful, the white light will flash twice every 5 seconds.

• Functional Operation



Accept/end a call:
double click the left or right earbud



Pause/play:
double click the left or right earbud



Previous track:
triple click the left earbud



Next track: triple
click the right earbud

• Power indicator of the charging case

- When the charging case is opened/closed, the power indicator will show the case's battery level.

If battery level is 100%-80%, the indicator flashes 3 times slowly;

If battery level is 80%-40%, the indicator flashes twice slowly;

If battery level is 40%-10%, the indicator flashes once slowly;

If battery level is less than 10%, the indicator flashes 6 times rapidly.

■ FAQs

When charging the charging case, the indicator is off.

- Please ensure the charging case is correctly connected with power source.

No sound

- Check if the earbuds are operating.
- Check if the earbuds volume are at an appropriate level.
- Check if the earbuds are correctly connected with mobile phone.
- Check if the earbuds are operating within a normal working range.

The call quality of the earbuds are not good.

- Check if mobile phone is in an area with strong signal.
- Please ensure the earbuds are within effective distance (10m) and no obstacle between the earbuds and mobile phone.

When playing music, cannot control pause/play/previous track/next track via the earbuds.

- Please ensure the paired device support AVRCP (Audio Video Remote Control Profile) profile.

■ Maintenance

- Do not use fast charger to charge the product to avoid affecting batteries' service life.
- If not used for long periods of time, please charge the product with lithium battery at least once per three months.
- Keep the product away from humid places to avoid affecting internal circuit. Do not use the product during intense exercise or with much sweat to prevent sweat from dropping into the product to make damage.
- Do not put the product in places exposed to sun or with high temperature. High temperature will shorten service life of electronic components, damage battery and make plastic components deformed.
- Do not put the product in cold places to avoid damaging internal circuit board.
- Do not dismantle the product. Non-professional personnel may damage the product.
- Do not drop, strongly vibrate, strike the product with hard object to avoid damaging internal circuit.
- Do not use drastic chemicals or cleaner to clean the product.
- Do not use sharp objects to scratch product surface to avoid damaging shell and affecting facade.



- "To prevent possible hearing damage, do not listen at high volume levels for long periods."
 - "Fully understand user manual before use."
 - "Ensure your player at low volume levels or power off before you leaving."
-



Correct Disposal of this product. This marking indicates that this product should not be disposed with other household disposal, recycle it responsibly to promote the sustainable reuse of material resources.

To return your used device, please use the return and collection systems or contact the retailer where the product was purchased. They can take this product for environmental safe recycling.



WARNING!

- Danger of explosion if battery is incorrectly replaced. Replace only with the same or equivalent type.
- A warning that batteries (battery pack or batteries installed) shall not be exposed to excessive heat such as sunshine, fire or the like.
- Never disassemble, hit with force, squeeze batteries or dispose of batteries in fire.
- Do not expose batteries in conductive materials, liquid, fire or heat.
- Do not let metal object contact two battery poles. If the battery looks swollen, leaking, discolored, having odor or any abnormal appearance, stop using it.
- Do not use the battery after immersed in water.
- Improper use of battery may lead to explosion or leakage, causing skin burn or other injuries; in the event of battery leakage, handle it with care and immediately dispose of the battery in the manner in compliance with applicable laws and regulations in your locality.
- The battery subjected to extremely low air pressure that may result in an explosion or the leakage of flammable liquid or gas.

EN • Warning!

- Please read the manual carefully. Keep it in safe place for future reference.
- Use the product properly by following the instructions in the manual.
- Using the product in a 0-35°C environment is recommended.
- Supervise children under 14 when using the product, the product is not a toy.
- To reduce the risk of fire and electric shock, do not expose the product to rain or moisture.
- Do not use the product near any heat source (e.g. radiator, heater, stove, or other devices that generate heat).
- Consult local staff before using the product near medical or industrial equipment or on board an aircraft.
- Never use strong acid, alkali, gasoline, alcohol, or other chemical solvents to clean the product surface. Use only neutral solvent or clear water for cleaning.
- To prevent possible hearing damage, do not listen at high volume level for long periods. Therefore, always set the volume to an appropriate level.
- For traffic safety, do not use the product while driving, cycling or crossing a road.



The Bluetooth® word mark and logos are registered trademarks owned by Bluetooth SIG, Inc. and any use of such marks by EDIFIER is under license. Other trademarks and trade names are those of their respective owners.

Declaration for EU

Frequency Band: 2.402GHz ~ 2.480GHz

RF Power Output: ≤20 dBm (EIRP)

There is no restriction of use.

Rated input: 5V==35mA(Earbuds) 5V==1A(Charging case)



Qualcomm®
aptX™

Qualcomm aptX is a product of Qualcomm Technologies, Inc. and/or its subsidiaries.

Qualcomm is a trademark of Qualcomm Incorporated, registered in the United States and other countries.

aptX is a trademark of Qualcomm Technologies International, Ltd., registered in the United States and other countries.

Edifier International Limited
P.O. Box 6264
General Post Office
Hong Kong

www.edifier.com

©2020 Edifier International Limited. All rights reserved.
Printed in China

NOTICE:

For the need of technical improvement and system upgrade, information contained herein may be subject to change from time to time without prior notice.

Products of EDIFIER will be customized for different applications. Pictures and illustrations shown on this manual may be slightly different from actual product. Images are for illustrative purposes only and may differ from the actual product.

EDIFIER®

FCC Regulatory Compliance

Warning: changes or modifications not expressly approved by the party responsible for compliance could void the user's authority to operate the equipment.

Note: This equipment has been tested and found to comply with the limits for a Class B digital device, pursuant to Part 15 of the FCC Rules. These limits are designed to provide reasonable protection against harmful interference in a residential installation. This equipment generates, uses and can radiate radio frequency energy and, if not installed and used in accordance with the instructions, may cause harmful interference to radio communications. However, there is no guarantee that interference will not occur in a particular installation.

If this equipment does cause harmful interference to radio or television reception, which can be determined by turning the equipment off and on, the user is encouraged to try to correct the interference by one or more of the following measures:

- Reorient or relocate the receiving antenna.
- Increase the separation between the equipment and receiver.
- Connect the equipment into an outlet on a circuit different from that to which the receiver is connected.
- Consult the dealer or an experienced radio/TV technician for help.

RF Exposure Compliance

This equipment complies with FCC radiation exposure limits set forth for an uncontrolled environment.

ISED Regulatory compliance

This device contains licence-exempt transmitters that comply with Innovation, Science and Economic Development Canada's licence-exempt RSS(s).

Operation is subject to the following two conditions:

This device may not cause interference.

This device must accept any interference, including interference that may cause undesired operation of the device.

L'émetteur exempt de licence contenu dans le présent appareil est conforme aux CNR d'Innovation, Sciences et Développement économique Canada applicables aux appareils radio exempts de licence. L'exploitation est autorisée aux deux conditions suivantes :

L'appareil ne doit pas produire de brouillage;

L'appareil doit accepter tout brouillage radioélectrique subi, même si le brouillage est susceptible d'en compromettre le fonctionnement.

This equipment complies with IC RSS-102 radiation exposure limits set forth for an uncontrolled environment.

Cet équipement est conforme aux limites d'exposition aux radiations IC CNR-102 établies pour un environnement non contrôlé.

IB-200-000000-14

名 称:	说明书FCC ISED认证说明-便携式音箱及耳机		东莞市漫步者科技有限公司
材 质:	80g书纸	版面设计:	
尺 寸:	125×120 (MM)	校 对:	
版本号及科号:	V1.2/IB-200-000000-14	批 准:	

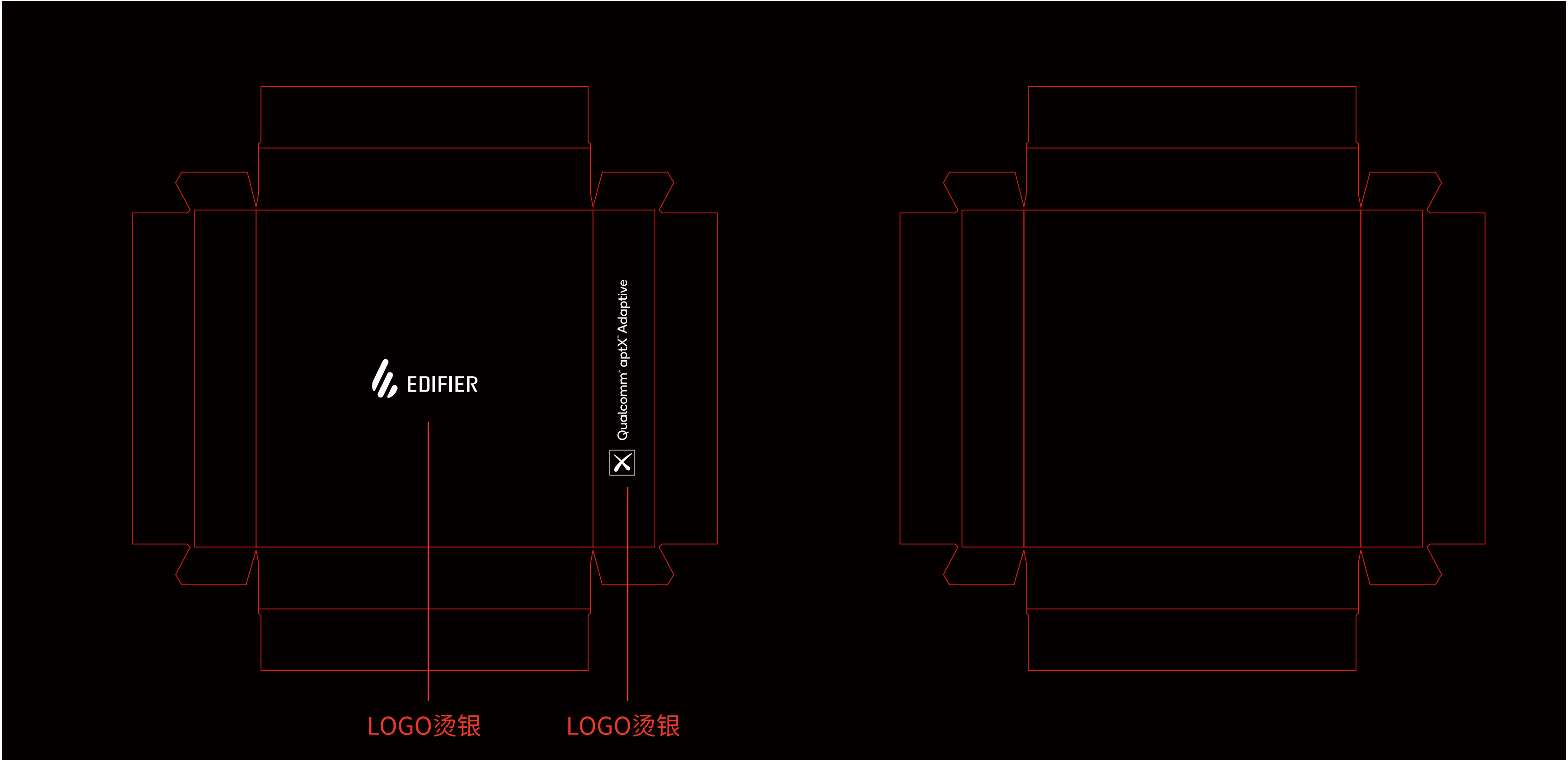
彩套TWS200 Pro黑色/带挂钩/国内/V1.0
尺寸：99x42x99.6mm
材质：300g单粉
工艺：五色印刷，表面过亚胶，正面LOGO/型号烫亚银+产品图过UV



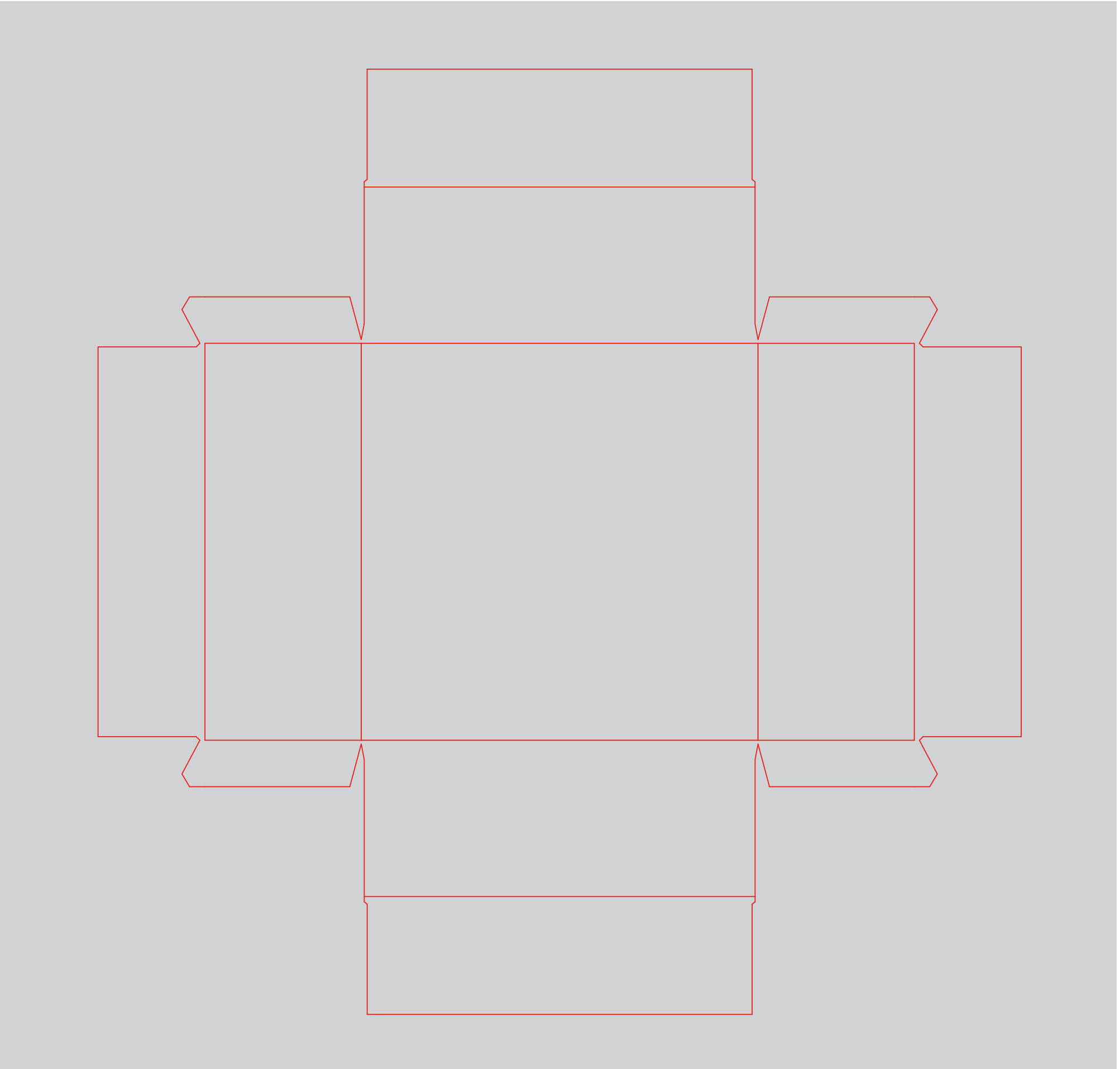
IT-002-LOLLIR-00 内箱LolliPods Pro/中间开双层天地盖（含外天地盖/内盒/围条）/无挂钩/含海绵/国内/V1.0
成型尺寸：98x41x98mm
材质：(外盒上下盖) 150g黑卡裱1200g高密度双面滑单面黑板纸(包边到底)+(海绵四周留2.5mm空隙)上盖2mm厚黑色海绵+(下盖内盒+围条) 157g双铜裱1000g高密度双面滑单面黑板纸+21mm高围条
工艺：各盒子表面及内边角需成型后刮边，要求边角方正，无n型面。外盒上盖LOGO烫银(上下左右居中)+下盖内盒及围条专色印刷包边（Pantone 427C）

LolliPods Pro天地盖外盒上盖刀模
尺寸：98x18x98mm
材质：150g黑卡裱1200g高密度双面滑单面黑板纸

LolliPods Pro天地盖外盒下盖刀模
尺寸：98x18x98mm
材质：150g黑卡裱1200g高密度双面滑单面黑板纸



LolliPods Pro天地盖内盒下盖刀模
尺寸：94x37x94mm
材质：(下盖内盒+围条) 157g双铜裱1000g高密度双面滑单面黑板纸+21mm高围条



围条高度21mm

