

Quick Guide

Overview

Thank you for choosing our Wireless Microphones.

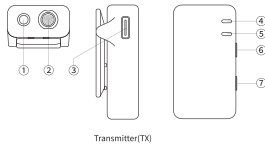
This device adopts 2.4G AFH (adaptive frequency hopping) and innovative digital wireless low-latency technology, provides high quality audio, stable and reliable signal transmission. It can be widely used in interviews, short video recordings, program hosting, live streaming, teaching and training, and other wireless applications.

This product is available in following different delivery includes

A	Transmitter×1	Receiver×1	Camera audio cable×1	OTG adapter×1	Furry windscreen×1	Recharging cable
B	Transmitter×2	Receiver×1	Camera audio cable×1	OTG adapter×1	Furry windscreen×2	Recharging cable
C	Transmitter×2	Receiver×1	Storage box×1	Camera audio cable×1	OTG adapter×1	Furry windscreen×2
D	Recording transmitter×2	Receiver×1	Storage box×1	Camera audio cable×1	OTG adapter×1	Furry windscreen×2
						Type-C data cable

I.User interface of transmitter (TX)

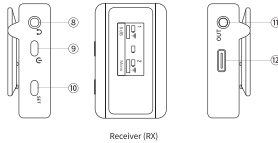
- ① MIC IN socket
- ② Built-in MIC: omni-directional pickup, put on the furry windscreen to reduce the wind noise
- ③ Type-C socket
- ④ Power / Status indicator: flashes in blue when not connected, lights in blue when connected, flashes in red when not connected and battery is low, lights in red when connected and battery is low, flashes in red while charging, lights in blue and stay on when fully charged
- ⑤ Function setting indicator: lights in blue when noise reduction is on; flashes in red when recording is on; flashes in blue when both functions are on
- ⑥ Power button: press and hold for 1 second to turn on or off
- ⑦ SET button: click to turn on/off noise reduction function; press and hold for 2 second to turn on/off recording function (if applicable)



Transmitter (TX)

II.User interface of receiver (RX)

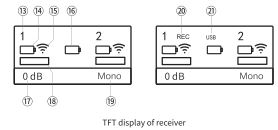
- ⑧ Headphone output
- ⑨ Power button: press and hold for 1 second to turn on or off
- ⑩ SET button: click to adjust the volume level, long press to switch the output mode
- ⑪ Audio output: for connecting the receiver to recording device such as camera, etc.
- ⑫ Type-C socket: for charging the receiver/connecting the receiver to recording device such as cell phone, laptop, etc.



Receiver (RX)

TFT display of receiver

- ⑬ Transmitter channel and connection status: lights in green means the transmitter was connected; lights in white means no connection
- ⑭ Transmitter battery level
- ⑮ Wireless signal indicator
- ⑯ Receiver battery level
- ⑰ Output volume level
- ⑱ Audio level: displays the microphone audio signal
- ⑲ Output mode: Mono is mixed output, namely band 1 and 2 are all mixed on both the left and right channel; Stereo is stereo output (band 1 is the left channel output, while band 2 is the right channel output); Ms is safe track output - the right channel output is 6 dB less than the left channel
- ⑳ Transmitter recording status: indicates "REC" while recording (if applicable)
- ㉑ USB connection: this icon will show up when the cell phone or computer is successfully connected through the OTG audio cable or adapter



TFT display of receiver

III.Matching

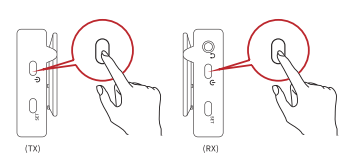
When TX and RX cannot be connected, follow the steps below to re-matching:

- 1.TX: turn on the transmitter, press and hold the power button and SET button at the same time for 2 seconds, the power indicator will flash shows the transmitter enters the matching mode (if there are two TXs, just operate same as above); then go to step 2.
- 2.RX: turn on the receiver, press and hold the power button and SET button at the same time for 2 seconds, the signal indicator on the display panel of the receiver will flash shows the receiver enters the matching mode.
- 3.Wait till the indicator of both TX and RX stop flashing, the matching is complete.

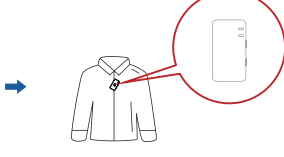
Quick Guide

IV.Start using

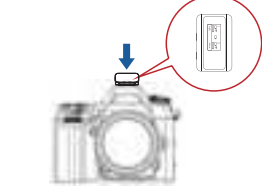
- ① Long press the power button of the TX and RX to turn on



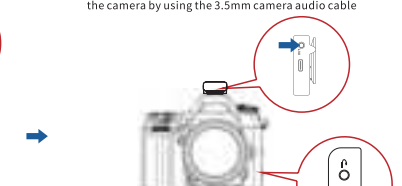
- ② Clip the TX on the collar



- ③ Mount the RX on the camera



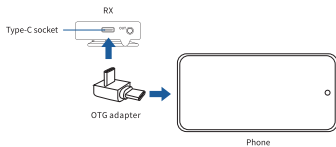
- ④ Connect the "OUT" socket of the RX with the "MIC IN" socket of the camera by using the 3.5mm camera audio cable



- ⑤ Set the RX output volume as 0dB or +3dB, and set the recording volume of the camera at rather minimum volume to improve the signal noise ratio and also avoid distortion during recording

RX - How to use on cell phone:

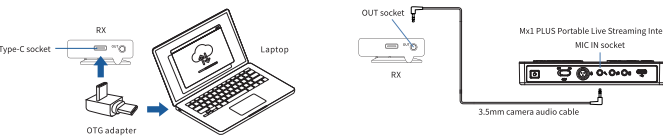
Connect the Type-C socket of the RX with the socket of the cell phone by using the Type-C OTG adapter or Lightning OTG adapter



- * For some cell phones with Type-C socket, you need to turn on the OTG function in the phone setting section

RX - How to use on other devices:

- ① Connect the Type-C socket of the RX with the Type-C/USB socket of the laptop by using the Type-C OTG adapter
- ② Connect the "OUT" socket of the RX with the "MIC IN" or "LINE IN" socket of the audio interface by using the 3.5mm camera audio cable



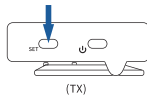
Quick Guide

V.Built-in recording function on transmitter (if applicable)

Long press the SET button of the transmitter for 2 seconds to start/end the recording. This function is only used for audio backup. Recording files are automatically saved/deleted in cycles.

* Storage space is about 4GB

* Recording files are exported by using the Type-C cable



(TX)

VI.Precautions

- 1.This product is a precise electronic device, which should avoid watering or heavy fall; if it gets wet, please dry it in time, and hand it up to professional technician for further checking.
- 2.When not using for a long time, the built-in rechargeable Li-battery should be fully charged every three months to maintain the high performance of the battery.
- 3.The built-in battery must not be exposed to sunlight, fire, or similar overheating environment.
- 4.If TX/RX cannot be shut down, press and hold the power button for 8 seconds to reset.
- 5.To avoid intermittent signal, please try to keep the transmitter and receiver face to face while using.



Face to face(correct)

Reverse direction(wrong)

VII.Specifications

Frequency range: 2402 - 2480 MHz
Modulation: GFSK, FSK, 4-CCPSK, 8DPSKFor DSS
Frequency response: 30 Hz - 20 kHz
Audio latency: ≤ 20 ms
Transmit power: ≤ 10 dBm
Power supply: DC 3.7V (built-in Li-battery)
Recharging input: 5V=500mA
Power management: shut down automatically after 5 minutes no connection
Operating temperature: 0 °C to 55 °C
Storage temperature: -20 °C to +55 °C
Dimensions: 47 * 26 * 13 mm (TX); 47 * 29 * 14 mm (RX)
Net weight: approx. 18 g (TX); approx. 21 g (RX)

Storage box:

Recharging input: 5V=2A

Power supply: DC 3.7V/2000mAh (built-in Li-battery)

* Open the lid can activate the indicator to check the remaining battery power

* Close the lid will enter the charging mode automatically

* A fully charged storage box can charge TX+TX+RX twice

* Open the lid will turn on the TX and RX in the storage box automatically; close the lid will turn off the TX and RX in the storage box automatically

◇ The image shown here is indicative only. If there is inconsistency between the image and the actual product, the actual product shall govern.
◇ We reserve the rights to improve product and product copyright information without prior notice.