

Blinds Chain Controller

Mobile Version

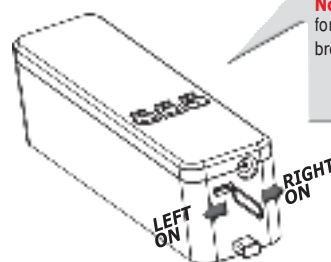
Character

- 1 No change of existing blinds , no tubular motor. One touch , manual to motor;
- 2 WIFI connector: work with google home , Alexa amazon Yandex etc directly;
- 3 Schedule: Setting open and close time as your like, open when sun rise, and close when sunset;
- 4 Long distance : open or close yourhomeblinds on office or business with Wifi on ;
- 5 Easy mounting and setting : 3-5 minutes DIY on your fingertip position;
- 6 Control: Mobile and remote both can ;

1 Open Motor and Choose Blinds Direction

- 1 **Open motor:** Power adapter to wall outlet , cable to the device. Slide mini switch.
- 2 **Chain position: Left direction:** Facing blinds, chain/rope on left hand.
Right direction: Facing blinds, chain/rope on right hand.
- 3 Slide mini switch on the bottom to same direction as chain. when switch sliding, light on surface shine from blue-green-red and stay on red. please be careful claiming this step as the switch is fragile.

After complete APP connecting, you can also change motor direction by selecting "motor direction" from the "more" submenu.

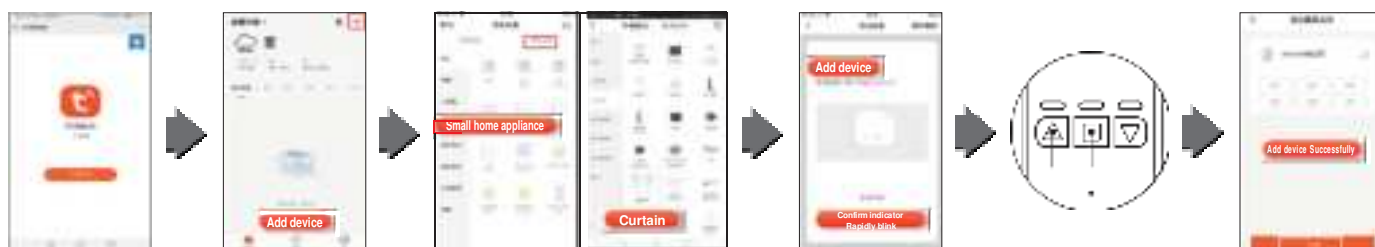


2 Device In Pairing Mode For Network Discover

- 1 Search and download "Tuya Smart" in major application markets or scan the "QR code" below to download the App, <https://en.tuya.com/>
- 2 Open "Tuya smart" or "Smart life", and connector with motor;



Sweep Down Loads APP



Open
"Smart life"
Or "Tuya Smart" App

Press
"Add device"
Or "+" on upper right
corner

Select " Small home appliance"
—motor—Curtain (wifi), Input your
Wifi address and password (note:
wifi must be 2.4GHz band).

Mobile: Confirm the
indicator is blinking
rapidly

Push and hold the Up Arrow (left) & Stop button (middle)
until Up Arrow starts flashing in blue (about 5 - 8 seconds).
press " confirm indicator rapidly blink" in mobile. added!

Note:

- 1) The motor will no response after APP connector until step 4: Set Limits On The Device;
- 2) Pls make sure that the Limits setting is prior to any APP control of motor.

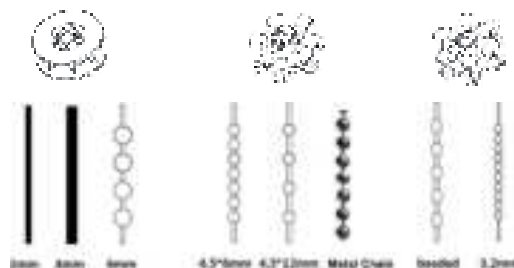


Photo 1 Suitable gear and chain

3 Mounting

1

Pull down on the blinds, hang the supplied card on bottom of chain, please note chain is straight and tight. According the chain position, mark "L" or "R" on the hole, (pls note card outside of the bottom bar).



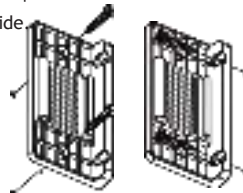
2

Installation mode 1:
3M Adhesive, To keep it more stronger, advice mounting bracket stick on 3m adhesive at least 12 hours before using.



3

Installation mode 2:
Replace the card with mounting bracket, The whole on mounting bracket aligned marked position, Fix screw on the hole; two position for choose: flat or side.



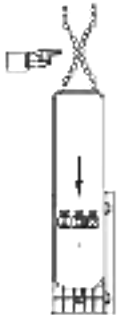
4

Open device back, Press up board outside, put suitable gear on, take chain around gear, close device backing (Suitable gear pls ref photo 1: bottom on back page).



5

Tight chain on the motor, put motor slide groove down, until motor lock on groove, pls choose reasonable chain tension.



Note: Pls be sure use the suitable gear for the chain (ref photo1), and adjust the tension , otherwise will noisy.

4 Set Limits On The Device



Push the Up Arrow (left button) until the shades open all the way.



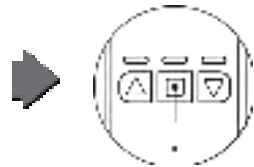
reach high limit position, Push the Stop Button and release.



shade stop, push and hold the Stop Button until the red light flashes (about 5 seconds)



Once the red light flashes, push the Down Arrow until the shades reach low limit position.



Hit the stop button when they are completely closed. The device will wait a few seconds then flash. Done!

Now, the device will automatically stop at the pre-set upper and lower limits. If the range changes please reset the limits.

5 Function Setting

1 **Schedule:** Can setting time as you like , Open when sunrise and close when sunset.

Step 2:

Device added successfully → More → Schedule

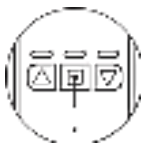
2 **Voice control**

Smart life → Welcome home → upper right corner

3 **Connector with google Alexa etc**

Tuya → Welcome home → me → more service → Alexa , google Assistant , Yandex etc.

4 **Device pair not only with mobile , but also remote**



push and hold the Stop Button (middle button) until the red light flashes (about 5 seconds),



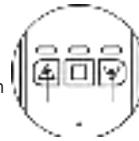
Once it's flashing, push the up button on the remote.



It will flash the lights, and the remote is paired.

6 Reset And Remove Device

Push UP & Down Arrow about 12 seconds, until the light flashes from red-blue-green 2-3 times , release , press stop button , reset device finish.



Top up the projection on bottom, slide upon groove, open up back board and take out chain.



Remove button

Parameters

Name	BLINDS CONTROLLER	Control Method	MOBILE or REMOTE		
Torque	1.35N.m	Speed	55rpm	ADAPTER VOLTAGE	110V-240V
Frequency	2.4GHz 433MHz	Voltage	12V	Rated Current	1.2A
Max Blinds Size	8FT(2.5M)*12FT(3.5M)	Max Weight	10KG	Battery (optional)	12V/1200mAH
Distance	No limit , ask for good wifi signal	Compatible	Directly connector with google home , alexa etc		

FCC WARNING

This device complies with part 15 of the FCC Rules. Operation is subject to the following two conditions: (1) this device may not cause harmful interference, and (2) this device must accept any interference received, including interference that may cause undesired operation.

Any changes or modifications not expressly approved by the party responsible for compliance could void the user's authority to operate the equipment.

NOTE: This equipment has been tested and found to comply with the limits for a Class B digital device, pursuant to Part 15 of the FCC Rules. These limits are designed to provide reasonable protection against harmful interference in a residential installation. This equipment generates, uses and can radiate radio frequency energy and, if not installed and used in accordance with the instructions, may cause harmful interference to radio communications. However, there is no guarantee that interference will not occur in a particular installation.

If this equipment does cause harmful interference to radio or television reception, which can be determined by turning the equipment off and on, the user is encouraged to try to correct the interference by one or more of the following measures:

- Reorient or relocate the receiving antenna.
- Increase the separation between the equipment and receiver.
- Connect the equipment into an outlet on a circuit different from that to which the receiver is connected.
- Consult the dealer or an experienced radio/TV technician for help.

To maintain compliance with FCC's RF Exposure guidelines, This equipment should be installed and operated with minimum distance between 20cm the radiator your body: Use only the supplied antenna.