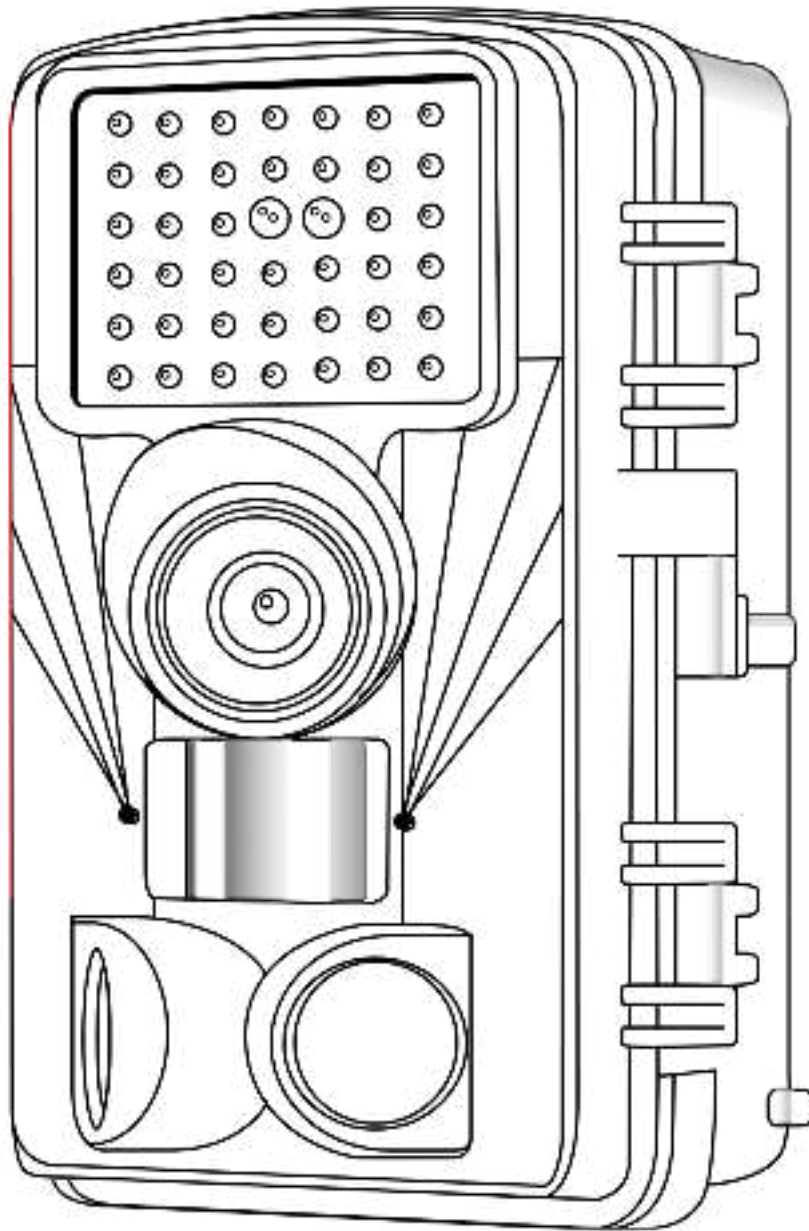


DARGAHOU



Instruction Manual

Bluetooth - 8K - Wi-Fi - APP

How to use it?

(Short Version)

Step1: Installation of battery , memory card
(Product does not include batteries)



①

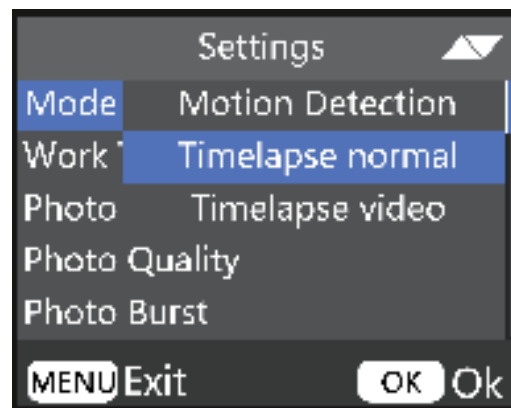


②



③

Step2: Select shooting parameters



Step3: Start working!

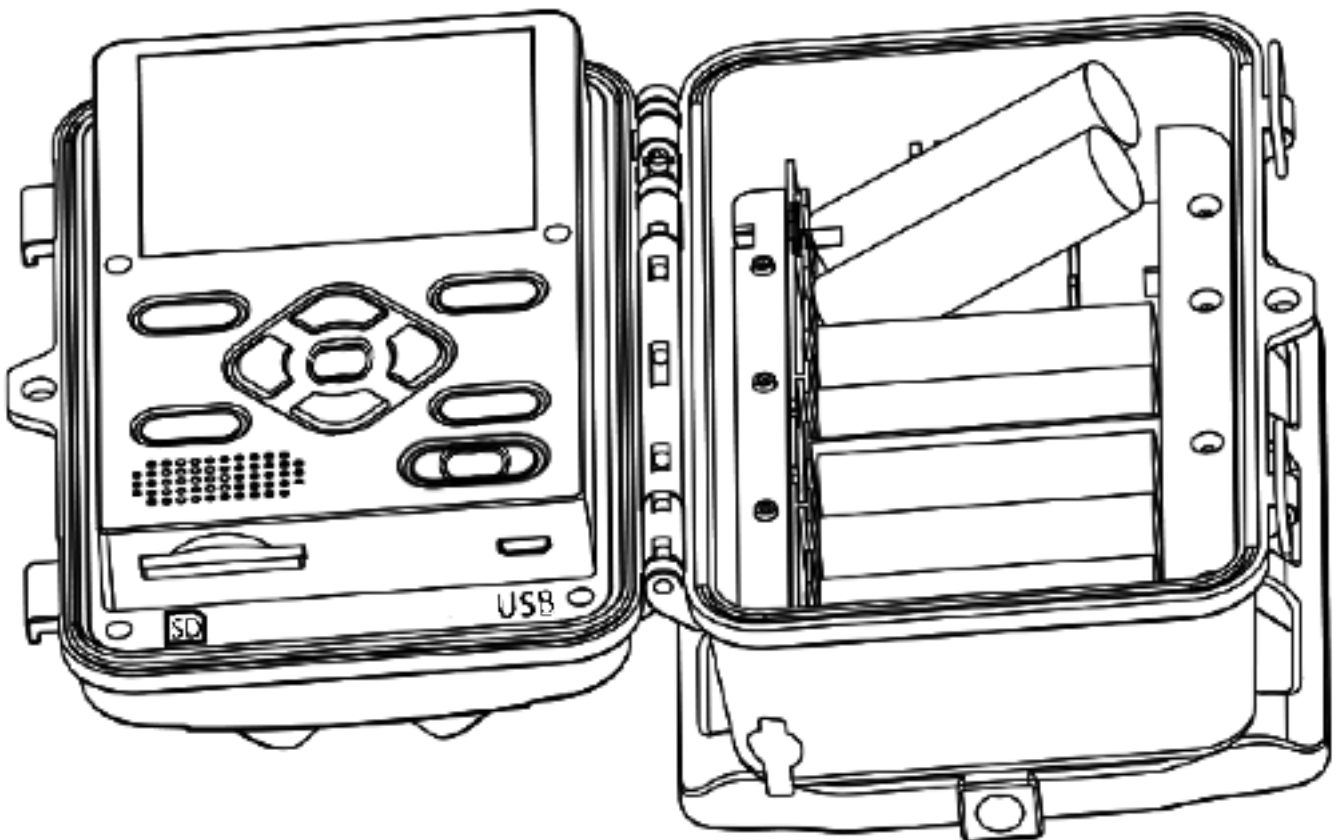


How to use it?

(Detail Version)

Step1: Installation of battery, memory card

(battery is not included)



1. Open the camera by unlocking two side locks.
2. Open the battery cover. (Right side)
3. Place at least 4 AA batteries into the slot.
4. 32 GB SD card has been installed into the memory card slot.

Step2: Select shooting parameters (Use camera only)

We will give an example of shooting with the following parameters:

Mode: Motion Detection

Photo Resolution: 60M

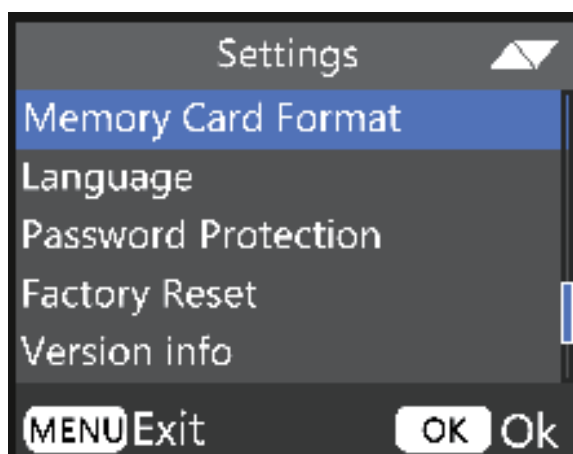
Video Resolution: 8K

You can follow this example and choose any other parameters you like!

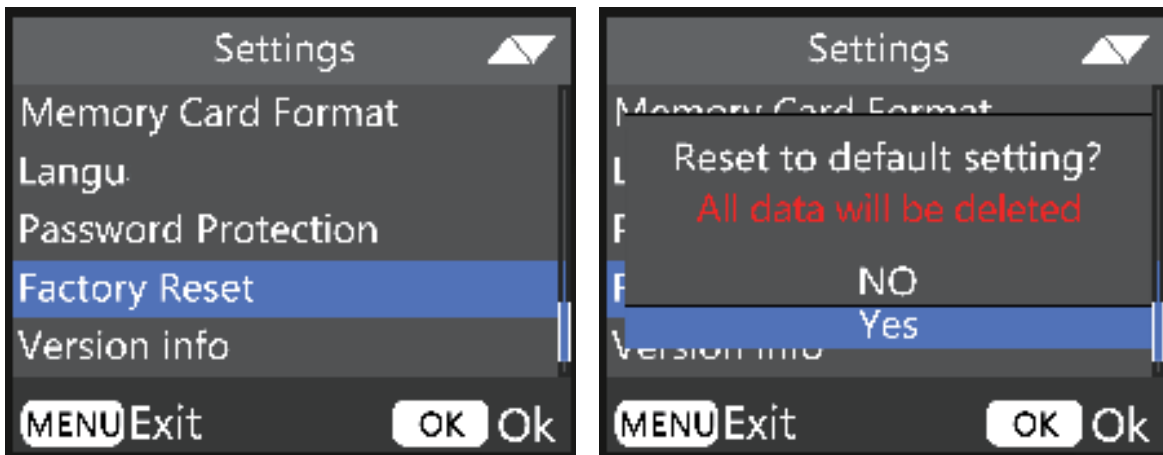
1: Switch "OFF" to "SETUP"



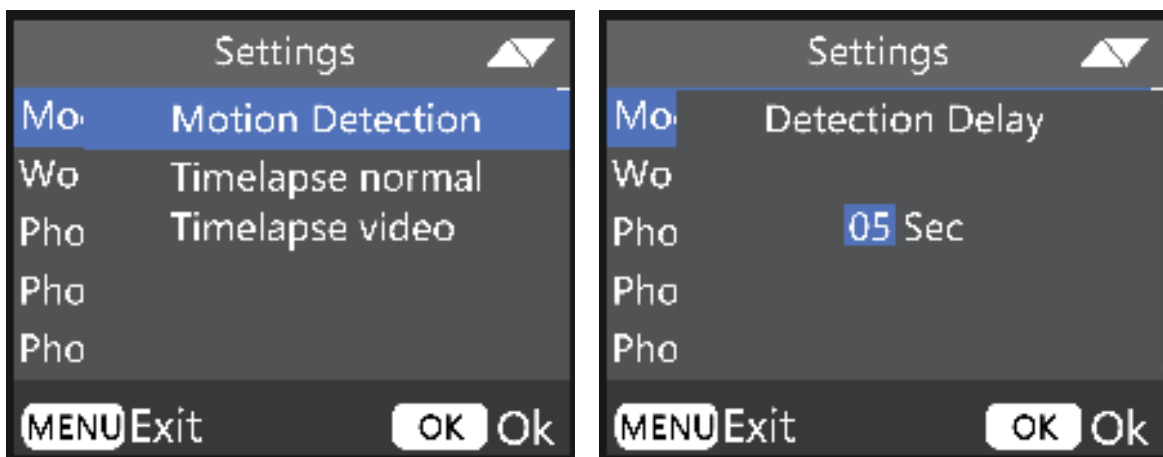
2: Format SD card.
(MENU → Memory Card Format → OK → YES)



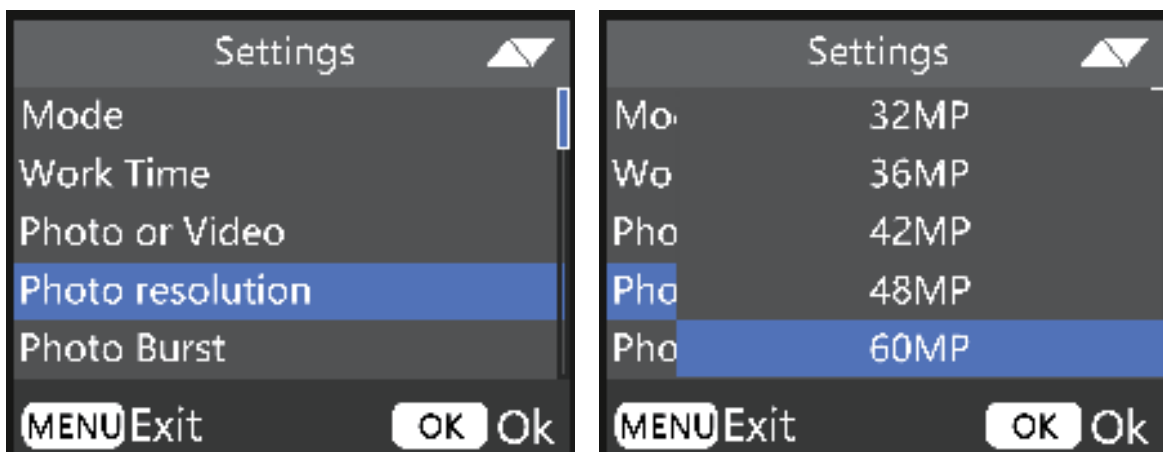
3 : Reset camera. (MENU → Factory Reset → OK → YES)



4 : Menu → Mode → Motion Detection → 05 Sec → OK. (In this mode, the camera will work when it detects object movement. The interval between two operations is 5s)



5 : Menu → Photo resolution → 60MP (At this setting, the camera takes photos at a resolution of 60MP)



6 : Menu → Video resolution → 8K (At this setting, the camera takes video at a resolution of 8K)



7 : Menu → Completing the setup

8 : Switch “SETUP” to “ON” - Wait 10s and the camera will work according to the parameters just set!



Step2.2: Select shooting parameters (Setting up with your phone)

In fact, you can parameterize the camera using the mobile app, and the effect is exactly the same as if you were to set it directly on the camera

1: Scan QR code to download "TrailCam Go" app



Android QR Code



TrailCam Go

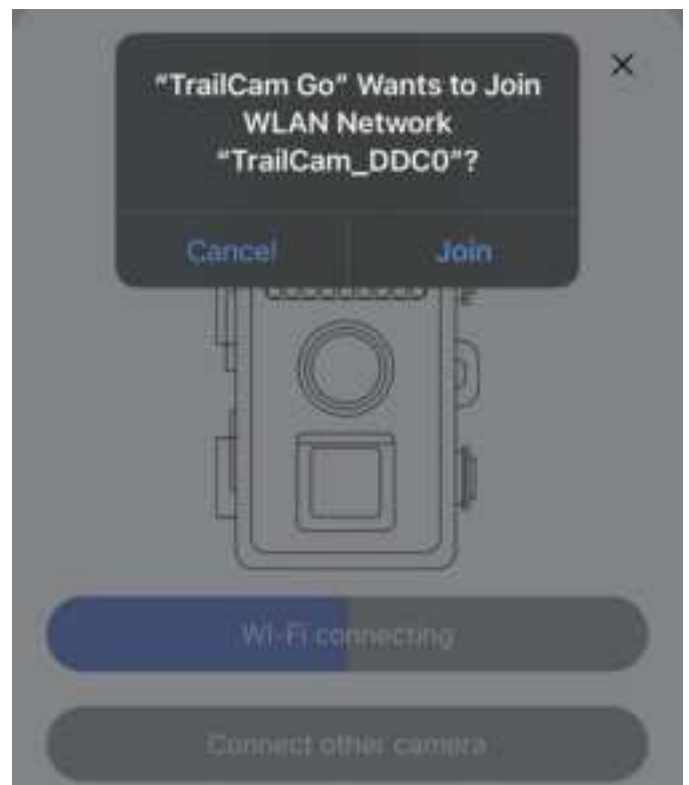


iOS QR Code

2: Open "TrailCam Go" → Click "Tap to add a device" → "Wi-Fi Camera".

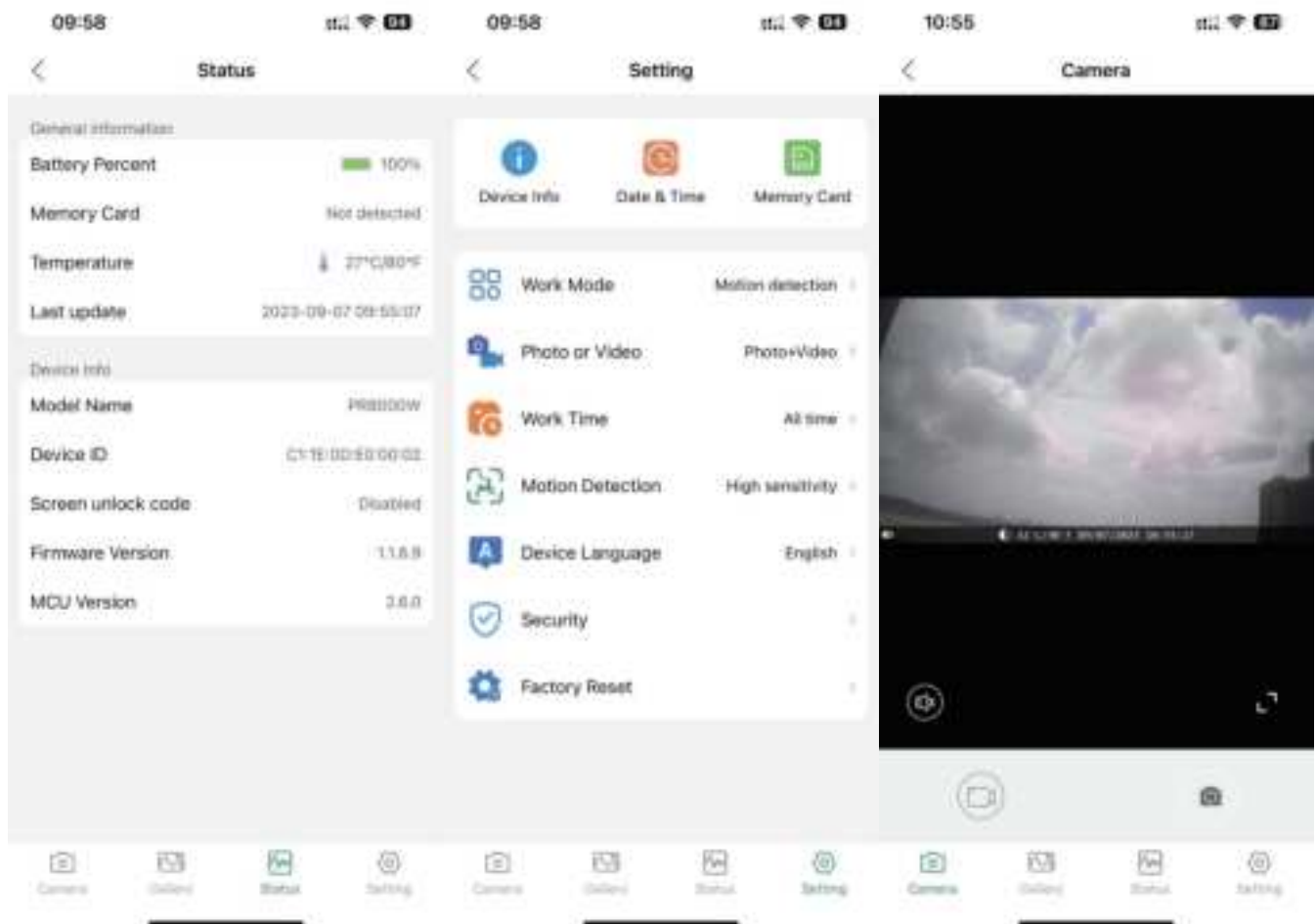
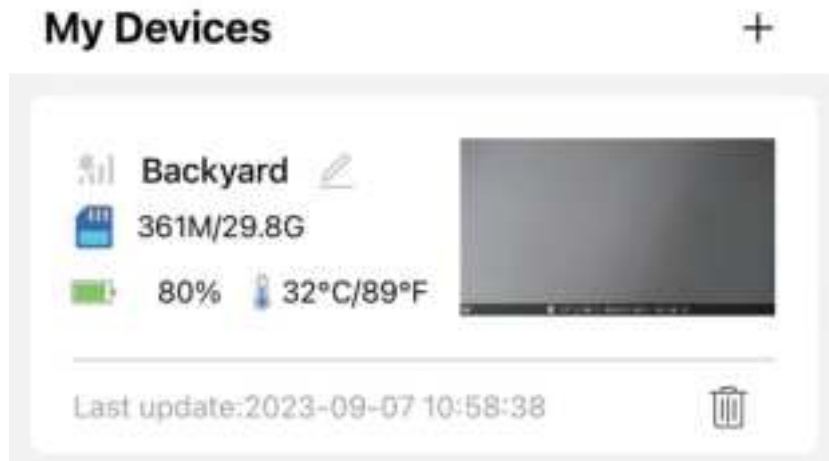
3: Switch Camera to "ON" → "Next" → "connect camera" → "Join"

- a. Make sure your Wi-Fi and Bluetooth is open.
- b. Make sure the phone is close enough to the camera.



4: Setting the device name → OK

5: Now you can see your trail camera in “Home,
Click on it to access the settings.



*If you have any questions please contact this email address.
trail_camera_service@outlook.com*

CAMERA PARAMETER

- 1 : Photo Resolution..... 2MP--60MP
- 2 : Video Resolution..... 720P--8K
- 3 : Detection Angle Up to 130°
- 4 : Fill Light LED Wavelength..... 940nm (No Glow)
- 5 : Fill Light LED Quantity..... 46PCS
- 6 : Trigger Time..... 0.03-0.3
- 7 : Waterproof Level..... IP66
- 8 : Working Temperature..... -14°F-160°F
- 9 : Memory Card Type..... Up to 256G SD Card (Class 10)
- 10 : Power Supply Type..... Battery External power supply
- 11 : Battery Type..... AA Battery (4 or 8)
- 12 : Working Voltage 6V
- 13 : External Power Supply..... DC 6V 1.5A
- 14 : Standby Time..... 6 months
- 15 : Photo Format..... JPEG
- 16 : Video Format..... AVI

FCC Warning Statement: Changes or modifications to this unit not expressly approved by the party responsible for compliance could void the user's authority to operate the equipment. This equipment has been tested and found to comply with the limits for a Class B digital device, pursuant to Part 15 of the FCC Rules. These limits are designed to provide reasonable protection against harmful interference in a residential installation. This equipment generates, uses and can radiate radio frequency energy and, if not installed and used in accordance with the instructions, may cause harmful interference to radio communications.

However, there is no guarantee that interference will not occur in a particular installation. If this equipment does cause harmful interference to radio or television reception, which can be determined by turning the equipment off and on, the user is encouraged to try to correct the interference by one or more of the following measures:

- Reorient or relocate the receiving antenna.
- Increase the separation between the equipment and receiver.
- Connect the equipment into an outlet on a circuit different from that to which the receiver is connected.
- Consult the dealer or an experienced radio/TV technician for help.

This device complies with Part 15 of the FCC Rules. Operation is subject to the following two conditions: (1) this device may not cause harmful interference, and (2) this device must accept any interference received, including interference that may cause undesired operation.

FCC Radiation Exposure Statement

The device has been evaluated to meet general RF exposure requirement. The device can be used in portable exposure condition without restriction.