

CS6529

CS6529-14

CS6529-15

CS6529-16

CS6529-17

CS6529-19



(US)



(CA)

Scan the QR code for support information

IMPORTANT SAFETY INSTRUCTIONS

When using your telephone equipment, basic safety precautions should always be followed to reduce the risk of fire, electric shock and injury, including the following:

- Read and understand all instructions.
- Follow all warnings and instructions marked on the product.
- Unplug this product from the wall outlet before cleaning. Do not use liquid or aerosol cleaners. Use a damp cloth for cleaning.
- CAUTION:** Do not install the telephone base at a height above 2 meters.
- Do not use this product near water such as near a bath tub, wash bowl, kitchen sink, laundry tub or a swimming pool, or in a wet basement or shower.
- Do not place this product on an unstable table, shelf, stand or other unstable surfaces.
- Avoid placing the telephone system in places with extreme temperature, direct sunlight, or other electrical devices. Protect your phone from moisture, dust, corrosive liquids and fumes.
- Slots and openings in the back or bottom of the telephone base and handset are provided for ventilation. To protect them from overheating, these openings must not be blocked by placing the product on a soft surface such as a bed, sofa or rug. This product should never be placed near or over a radiator or heat register. This product should not be placed in any area where proper ventilation is not provided.
- This product should be operated only from the type of power source indicated on the marking label. If you are not sure of the type of power supply in your home or office, consult your dealer or local power company.
- Do not allow anything to rest on the power cord. Do not install this product where the cord may be walked on.
- Never push objects of any kind into this product through the slots in the telephone base or handset because they may touch dangerous voltage points or create a short circuit. Never spill liquid of any kind on the product.
- To reduce the risk of electric shock, do not disassemble this product, but take it to an authorized service facility. Opening or removing parts of the telephone base or handset other than specified access doors may expose you to dangerous voltages or other risks. Incorrect reassembly can cause electric shock when the product is subsequently used.
- Do not overload wall outlets and extension cords.
- Unplug this product from the wall outlet and refer servicing to an authorized service facility under the following conditions:
 - When the power supply cord or plug is damaged or frayed.
 - If liquid has been spilled onto the product.
 - If the product has been exposed to rain or water.
 - If the product does not operate normally by following the operating instructions. Adjust only those controls that are covered by the operation instructions. Improper adjustment of other controls may result in damage and often requires extensive work by an authorized technician to restore the product to normal operation.
 - If the product has been dropped and the telephone base and/or handset has been damaged.
 - If the product exhibits a distinct change in performance.

Q575T-BT 855VSD-855VSD



© 2023 Vtech Communications, Inc. All rights reserved. 2272, ACIB, VJL, 231214

Specifications are subject to change without notice.

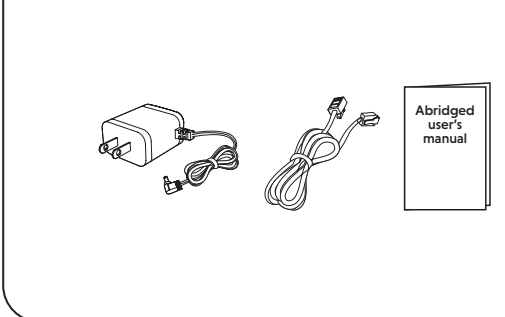
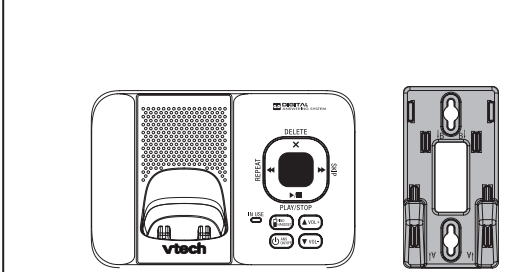
The Bluetooth® word mark and logos are owned by Bluetooth SIG, Inc. and any use of such marks by Vtech Holdings Limited is under license. Vtech Holdings Limited is a member of Bluetooth SIG, Inc. Other trademarks and trade names are those of their respective owners.

Go to phones.vtechcanada.com (Canada) for the latest Vtech product news.

Go to www.vtechphones.com (US) to register your Vtech product for enhanced warranty support and latest Vtech product news.

WHAT'S IN THE BOX

Your telephone package contains the following items. Save your sales receipt and original packaging in case it is necessary to ship your telephone for warranty service.



1 set for CS6529-2/
CS6529-14/CS6529-15/
CS6529-16/CS6529-17/
CS6529-19 |
2 sets for CS6529-2/
CS6529-25/CS6529-26 |
3 sets for CS6529-3 |
4 sets for CS6529-4/
CS6529-4B
5 sets for CS6529-5

1 set for CS6529-2/
CS6529-25/CS6529-26 |
2 sets for CS6529-3 |
3 sets for CS6529-4/
CS6529-4B
4 sets for CS6529-5

1 set for CS6529-2/
CS6529-25/CS6529-26 |
2 sets for CS6529-3 |
3 sets for CS6529-4/
CS6529-4B
4 sets for CS6529-5

1 set for CS6529-2/
CS6529-25/CS6529-26 |
2 sets for CS6529-3 |
3 sets for CS6529-4/
CS6529-4B
4 sets for CS6529-5

1 set for CS6529-2/
CS6529-25/CS6529-26 |
2 sets for CS6529-3 |
3 sets for CS6529-4/
CS6529-4B
4 sets for CS6529-5

1 set for CS6529-2/
CS6529-25/CS6529-26 |
2 sets for CS6529-3 |
3 sets for CS6529-4/
CS6529-4B
4 sets for CS6529-5

REDIAL LIST

Each handset stores the last 10 telephone numbers dialed. When there are already 10 entries, the oldest entry is deleted to make room for the new entry.

Review and dial a redial list entry

- Press **REDIAL** when the handset is not in use.
- Press **▼** or **▲** or **REDIAL** repeatedly until the desired entry displays.
- Press **TALK** or **📞** to dial.

Delete a redial list entry

- When the desired redial entry displays, press **DELETE**.

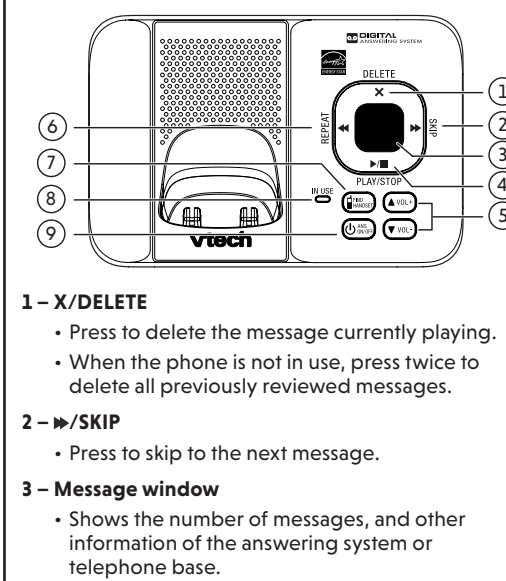
TRANSFER A CALL

While on an outside call, you can transfer the call from one handset to another.

- Press **MENU** on your handset during a call.
- Press **▼** or **▲** to scroll to **Transfer**, and then press **SELECT**.
- If you have three or more handsets, use the dialing keys to enter a destination handset number.
- To answer the intercom call, press **TALK** or any dialing key on the destination handset.

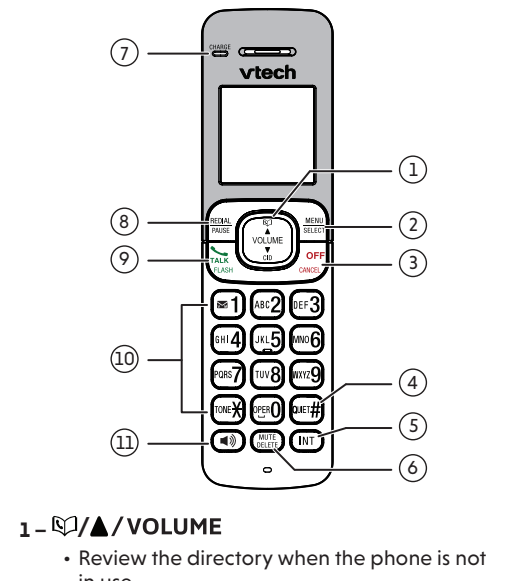
OVERVIEW

Telephone base



- X/DELETE**
 - Press to delete the message currently playing.
 - When the phone is not in use, press twice to delete all previously reviewed messages.
- /SKIP**
 - Press to skip to the next message.
- Message window**
 - Shows the number of messages, and other information of the answering system or telephone base.
- /PLAY/STOP**
 - Press to play messages.
 - Press to stop message playback.
- ▲VOL+ / ▼VOL-**
 - Press to adjust the volume during message playback.
 - When the phone is not in use, press to adjust the telephone base ringer volume.
- ←/REPEAT**
 - Press to repeat the playing message.
 - Press twice to play the previous message.
- FIND HANDSET**
 - Page all system handsets.
- IN USE light**
 - Steady on in red when the line is in use or when a handset is being registered.
 - Flashes in red when there is an incoming call or when handsets are being deregistered.
 - Refer to the **Bluetooth** section for the **IN USE** light indications when pairing and using a Bluetooth headset.
- ANS ON/OFF**
 - Press to turn the answering system on or off.

Handset



- 📞/VOLUME**
 - Review the directory when the phone is not in use.
 - Scroll up while in a menu, or in the directory, caller ID log or redial list.
 - Move the cursor to the right when entering numbers or names.
 - Increase the listening volume during a call or message playback.
- VOLUME/▼/CID**
 - Review the caller ID log when the telephone is not in use.
 - Scroll down while in a menu, or in the directory, caller ID log or redial list.
 - Move the cursor to the left when entering numbers or names.
 - Decrease the listening volume during a call or message playback.
- MENU/SELECT**
 - Show the menu.
 - While in a menu, press to select an item, or save an entry or setting.
- OFF/CANCEL**
 - Hang up a call.
 - Return to the previous menu.
 - Press and hold to exit menu display without making changes.
 - Delete digits while predialing.
 - Silence the handset ringer temporarily while the phone is ringing.
 - Press and hold to erase the missed call indicator while the handset is not in use.

INTERCOM

Use the intercom features for conversations between two handsets.

- Press **INT** on your handset when not in use. If you have three or more handsets, use the dialing keys to enter a destination handset number.
- To answer the intercom call, press **TALK** or any dialing key on the destination handset.
- To end the intercom call, press **OFF** or place the handset back in the telephone base or charger.

Answer an incoming call during an intercom call

If you receive an incoming call during an intercom call, there is an alert tone.

- To answer the outside call, press **TALK**. The intercom call ends automatically.
- To end the intercom call without answering the outside call, press **OFF**. The telephone continues to ring.

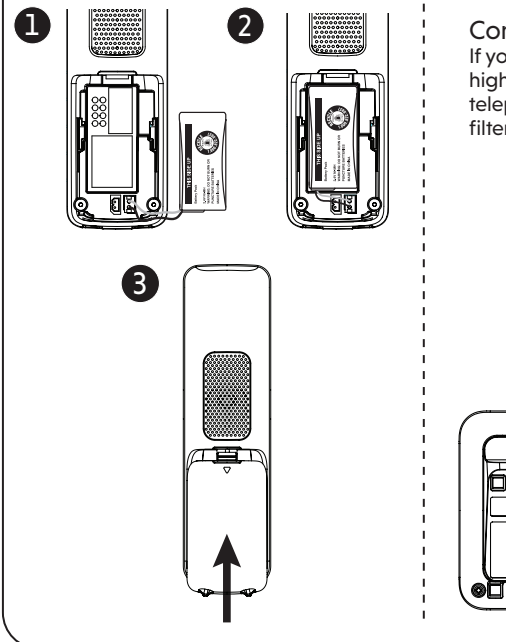
Call transfer using intercom

While on an outside call, you can use the intercom feature to transfer the call from one handset to another.

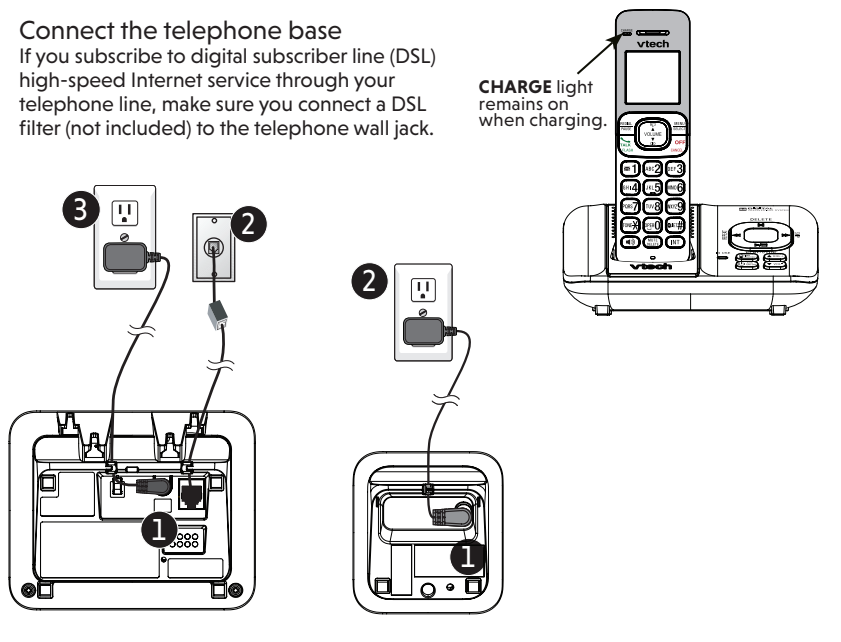
- Press **INT** on your handset during a call. The current call is put on hold.

INSTALL AND CONNECT | MOUNT (OPTIONAL)

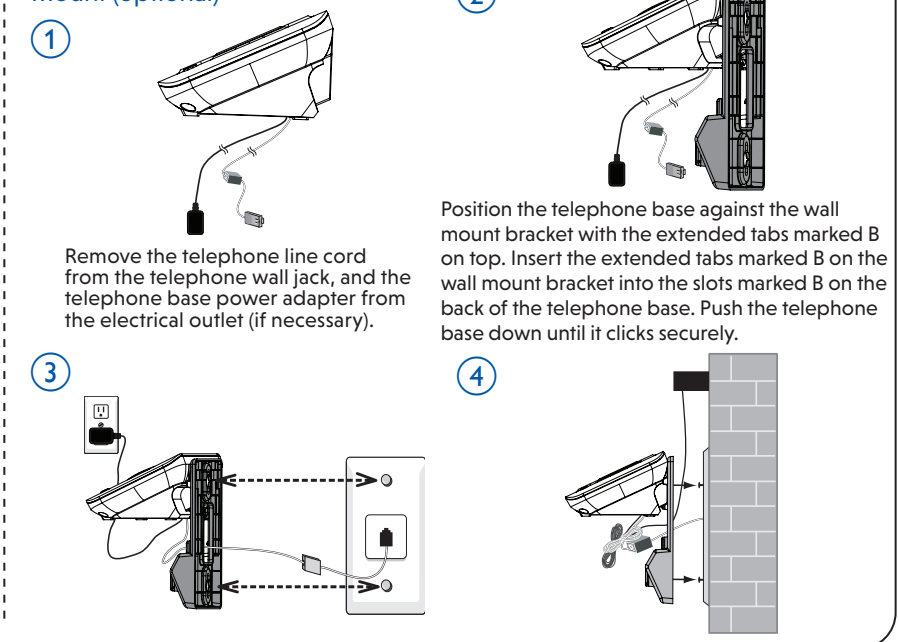
Install the battery



Connect and charge



Mount (optional)



SETUP

After the telephone is installed or power returns following a power outage and battery depletion, the handset will prompt you to set the date and time.

Date and time

When the handset prompts, follow the steps below to set the date and time.

- Use the dialing keys **(0-9)** to enter the month **(MM)**, date **(DD)** and year **(YY)**. Then press **SELECT**.
- Use the dialing keys **(0-9)** to enter the hour **(HH)** and minute **(MM)**. Then press **▼** or **▲** to choose **AM** or **PM**.
- Press **SELECT** to save.

NOTE: If you have skipped the prompt, you can set up again by pressing **MENU**. Scroll to choose **Set date/time** and press **SELECT**. Then, follow the steps above.

Change LCD language settings

You can select English, French, or Spanish to be used in all screen displays:

- Press **MENU** when the handset is not in use.
- Press **▼** or **▲** to scroll to **Settings** and then press **SELECT**.
- Press **SELECT** to choose **LCD language**.
- Press **▼** or **▲** to choose **English, Français or Español**, and then press **SELECT** twice to save.

NOTE: If you accidentally set the LCD language to Spanish or French, press **MENU** and then enter ***364#** to change the handset LCD language back to English while the handset is not in use.

Use the handset menu

- Press **MENU** when the phone is not in use.
- Press **▼** or **▲** until the screen displays the desired feature menu.
- Press **SELECT**.
- Press **SELECT** to return to the previous menu.
- Press and hold **CANCEL** to exit completely.

Make a call

- Press **TALK** or **📞**, and then dial the telephone number.

Answer a call

- Press **TALK** or **📞** or any dialing keys.

End a call

- Press **OFF** or put the handset back in the telephone base or charger.

Speakerphone

- During a call, press **📞** on the handset to switch between speakerphone and handset earpiece.

Volume

- During a call, press **▲/VOLUME/▼** to adjust the listening volume.

Mute

The mute function allows you to hear the other party but the other party cannot hear you.

- During a call, press **MUTE**. The handset displays **Muted**.
- Press **MUTE** again to resume the conversation. The handset displays **Microphone** on briefly.

Join a call in progress (for two-handset models only)

You can use up to two handsets at a time on an outside call.

- When a handset is already on a call, press **TALK** or **📞** on another handset to join the call.
- To exit the call, press **OFF** on the handset or place it in the telephone base or charger. The call continues until all handsets hang up.

Call waiting

When you subscribe to call waiting service from your telephone service provider, you hear an alert tone if there is an incoming call while you are already on a call.

- Press **FLASH** to put the current call on hold and take the new call.
- Press **FLASH** at any time to switch back and forth between calls.

Find handset

Use this feature to find the system handset.

To start paging:

- Press **FIND HANDSET** on the telephone base when not in use. All idle handsets ring and display **"Paging"**.

To end paging:

- Press **FIND HANDSET** at the telephone base.

- Press **TALK** or **📞**, **OFF** or any dialing keys on the handset.

- Place the handset in the telephone base or charger.

NOTE: Do not press and hold **FIND HS** for more than 4 seconds. It may lead to handset deregistration.

BLUETOOTH®

Your telephone system is enhanced with Bluetooth feature. You can pair a Bluetooth headset to your telephone system and answer calls with your Bluetooth headset.

NOTES:

- Before you begin, make sure that your Bluetooth enabled headset is not connected to any other Bluetooth device. If you have trouble pairing your Bluetooth headset to your telephone system, try turning off the Bluetooth feature of the nearby devices that your Bluetooth headset has previously paired.
- Bluetooth wireless technology operates within a short range (a maximum of approximately 15 feet) from the telephone base. Keep connected headset within this range.

For more details about the Bluetooth feature, read the online Complete user's manual.

Pair and connect a Bluetooth headset

- Set your Bluetooth headset to pairing mode. Refer to your Bluetooth headset user's manual to learn how.
- Press **TALK** or **📞** on the handset.
- Press and hold **FIND HANDSET** on the telephone base for 4 seconds.
 - The telephone then enters pairing mode.
 - The **IN USE** LED flashes in purple and red alternately.
 - To cancel pairing, press **FIND HANDSET** on the telephone base.

The Bluetooth® word mark and logos are owned by Bluetooth SIG, Inc. and any use of such marks by Vtech Holdings Limited is under license. Vtech Holdings Limited is a member of Bluetooth SIG, Inc. Other trademarks and trade names are those of their respective owners.

Pair and connect a Bluetooth headset

- Set your Bluetooth headset to pairing mode. Refer to your Bluetooth headset user's manual to learn how.
- Press **TALK** or **📞** on the handset.
- Press and hold **FIND HANDSET** on the telephone base for 4 seconds.
 - The telephone then enters pairing mode.
 - The **IN USE** LED flashes in purple and red alternately.
 - To cancel pairing, press **FIND HANDSET** on the telephone base.

Use the alphabetical search to find the desired entry.

- Press **SELECT** to save. You hear a confirmation. The name (up to 12 characters) appears in the selected speed dial location.

NOTES:

If the directory is empty, when you press **SELECT** in Step 5, the screen displays **Directory empty**.

Reassign a speed dial entry

- Press **MENU** when the phone is not in use.
- Scroll to **Directory**, and then press **SELECT**.
- Scroll to **Speed dial**, and then press **SELECT**.
- Press **▼** or **▲** or the dialing keys **(0 or 2-9)** to choose the desired speed dial location, then press **DELETE**. The screen displays **Clear SD #X?**.
- Press **SELECT** to confirm. You hear a confirmation tone.

NOTE: Deleting the speed dial entries does not affect the entries in the directory.

- When successfully paired and connected to the Bluetooth headset, the **IN USE** LED becomes steady on in purple.

- Press **OFF** on the handset or place the handset in the telephone base or charger after pairing. The **IN USE** LED becomes steady on in blue.

Bluetooth headset connection status:

- Pairing** - while pairing to a Bluetooth headset, the **IN USE** LED flashes in purple and red alternately.
- Connected** - when successfully paired and connected to a Bluetooth headset, the **IN USE** LED becomes steady on in blue when the telephone is not in use.
- NOTE:** When there is an incoming call, you hear a ringing tone on your Bluetooth headset and the **IN USE** LED flashes in red. You can answer the incoming call with your Bluetooth headset.
- Bluetooth headset in use** - when the connected Bluetooth headset is in use, the **IN USE** LED flashes in purple and blue alternately.
- Both telephone and Bluetooth headset are in use** - when both the telephone and the connected Bluetooth headset are in use, the **IN USE** LED becomes steady on in purple.
- No connection** - the **IN USE** LED turns off.

Remove paired Bluetooth headset

- Press **TALK** or **📞** on the handset.
- Press and hold **FIND HANDSET** on the telephone base for 4 seconds. The paired Bluetooth headset will be removed.

NOTES:

You can use your connected Bluetooth headset to answer calls or end the call.

If you fail to connect your Bluetooth headset to the telephone, re-try the pairing steps above.

To pair another Bluetooth headset to the telephone, perform the pairing steps above and the current paired headset will be replaced by the new Bluetooth headset.

While on a call using your Bluetooth headset, keep your headset closer to the telephone base (within 15 feet) and make sure that there are no physical obstacles such as large furniture or thick wall in between.

The Bluetooth® word mark and logos are owned by Bluetooth SIG, Inc. and any use of such marks by Vtech Holdings Limited is under license. Vtech Holdings Limited is a member of Bluetooth SIG, Inc. Other trademarks and trade names are those of their respective owners.

Pair and connect a Bluetooth headset

- Set your Bluetooth headset to pairing mode. Refer to your Bluetooth headset user's manual to learn how.
- Press **TALK** or **📞** on the handset.
- Press and hold **FIND HANDSET** on the telephone base for 4 seconds.
 - The telephone then enters pairing mode.
 - The **IN USE** LED flashes in purple and red alternately.
 - To cancel pairing, press **FIND HANDSET** on the telephone base.

Use the alphabetical search to find the desired entry.

- Press **SELECT** to save. You hear a confirmation. The name (up to 12 characters) appears in the selected speed dial location.

Dial a speed dial number

- Press and hold a dialing key **(0 or 2-9)** to dial the number stored in the corresponding speed dial location.

When the speed dial location is empty, the screen displays the speed dial entry.

Delete a speed dial entry

- Press **MENU** when the phone is not in use.
- Scroll to **Directory**, and then press **SELECT**.
- Scroll to **Speed dial**, and then press **SELECT**.
- Press **▼** or **▲** or the dialing keys **(0 or 2-9)** to choose the desired speed dial location, then press **DELETE**. The screen displays **Clear SD #X?**.
- Press **SELECT** to confirm. You hear a confirmation tone.

NOTE: Deleting the speed dial entries does not affect the entries in the directory.

CALLER ID

If you subscribe to caller ID service, information about each caller appears after the first or second ring. If you answer a call before the caller information appears on the screen, it will not be saved in the caller ID log.

The caller ID log stores up to 50 entries. Each entry has up to 24 digits for the phone number and 15 characters for the name.

If the telephone number has more than 15 digits, only the last 15 digits appear. If the name has more than 15 characters, only the first 15 characters are shown and saved in the caller ID log.

Review a caller ID log entry

- Press **CID** when the phone is not in use.
- Scroll to browse through the caller ID log.

-OR-

- Press **MENU** when the phone is not in use.
- Scroll to **Caller ID log**, and then press **SELECT**.
- Press **SELECT** to choose **Review**.
- Scroll to browse through the caller ID log.

- Press **#** or **1** repeatedly if you need to add or remove 1 in front of the phone number.

Missed call indicator

When there are calls that have not been reviewed in the caller ID log, the handset displays **XX missed calls**.

Each time you review a caller ID log entry marked **NEW**, the number of missed calls decreases by one.

When you have reviewed all the missed calls, the missed call indicator no longer displays.

If you do not want to review the missed calls one by one, press and hold **CANCEL** on the idle handset to erase the missed call indicator. All the entries are then considered old.

Dial a caller ID log entry

- Search for or review the caller ID log entries (see **Review a caller ID log entry**).
- When the desired entry appears, press **↵** or **↵** to dial.

Save a caller ID log entry to the directory

- Search for or review the caller ID log entries (see **Review a caller ID log entry**).
- When the desired caller ID log entry displays, press **SELECT**.

- Use the dialing keys to edit the number, if necessary. Then press **SELECT**.
- Use the dialing keys to edit the name, if necessary. Then press **SELECT**.

Turn on or off the call screening

Use this feature to choose whether incoming messages can be heard over the telephone base when they are being recorded. If you turn call screening on, you hear the incoming message.

- Press **MENU** when the handset is not in use.
- Press **▼** or **▲** to choose **Answering sys** and then press **SELECT**.
- Press **▼** or **▲** to choose **Ans sys setup** and then press **SELECT**.
- Press **SELECT** again to choose **Call screening**.
- Press **▼** or **▲** to choose **Screening:On** or **Screening:Off**, then press **SELECT** to save.

Screen a call with answering system

Screen calls at the cordless handset:

If the answering system is on and a call is being answered by the answering system, the handset shows **To screen call**, press **SELECT**.

Press **SELECT** to screen the call on your handset. The handset shows **Screening...**

Option while a message is being recorded

- Press **▼/VOLUME** or **▲/VOLUME** on the handset to adjust the call screening volume.

Screen calls at the base:

If the answering system and call screening are on, the announcement and the incoming message broadcast at the telephone base when a call is answered by the answering system.

Option while a message is being recorded

- Press **▼VOL** or **▲VOL** + on the telephone base to adjust the call screening volume.

- Press **►/PLAY** to temporarily turn on the screening if it is set to off.

RETRIEVE VOICEMAIL FROM TELEPHONE SERVICE

Voicemail is a feature available from most telephone service providers. It may be included with your telephone service, or may be optional. Fees may apply.

Retrieve voicemail

Your telephone can be damaged if it gets wet. Do not use the handset outdoors in the rain, or hand it with wet hands. Do not install the telephone base near a sink, bathtub or shower.

When you received a voicemail, the handset displays **☒** and **New voicemail**. To retrieve, you typically dial an access number provided by your telephone service provider, and then enter a security code. Contact your telephone service provider for instructions on how to configure the voicemail settings and listen to messages.

NOTE: After you have listened to all new voicemail messages, the indicators on the handset turn off automatically.

Delete the caller ID log entries

- Search for or review the caller ID log entries (see **Review a caller ID log entry**).
- When the desired caller ID log entry displays, press **DELETE**.

To delete all caller ID log entries:

- Press **MENU** when the phone is not in use.
- Scroll to **Caller ID log** and then press **SELECT**.
- Scroll to **Del all calls** and then press **SELECT**.
- Press **SELECT** to confirm.

SOUND SETTINGS

Key tone

You can turn the key tone on or off.

- Press **MENU** when the handset is not in use.
- Scroll to **Settings** and then press **SELECT**.
- Scroll to choose **Key tone**, then press **SELECT**.
- Press **▼** or **▲** to choose **Key tone:On** or **Key tone:Off**, then press **SELECT** to save.

Ringer tone

You can choose from different ringer tones for each handset.

- Press **MENU** when the handset is not in use.
- Scroll to **Ringers** and then press **SELECT**.
- Scroll to choose **Ringer tone**, then press **SELECT**.
- Press **▼** or **▲** to sample each ringer tone, then press **SELECT** to save.



NOTE: If you turn off the ringer volume, you will not hear ringer tone samples.

Ringer volume

You can adjust the handset ringer volume level, or turn the ringer off.

- Press **MENU** when the handset is not in use.
- Scroll to **Ringers** and then press **SELECT**.
- Press **SELECT** again to choose **Ringer volume**.
- Press **▼** or **▲** to sample each volume level, then press **SELECT** to save.



- If you turn off the volume, the handset will be silenced and display **☒** icon.
- When the ringer volume is set to **Off**, the handset still rings when you press **IFIND HANDEST** at the telephone base.

Temporary ringer silencing

When the telephone is ringing, you can temporarily silence the ringer without disconnecting the call. The next call rings normally at the preset volume.

To silence the handset ringer:

- Press **OFF** or **MUTE** on the handset. The handset displays **☒** and **Ringer muted** briefly.

Quiet mode

You can turn on the quiet mode for a period of time. During this period, all tones (except paging tone) and call screening are muted.

- Press and hold **QUIET#** on the handset when it is not in use.
- Use the dialing keys (**0-9**) to enter the duration, and then press **SELECT** to save.

- Turn off the quiet mode, press and hold **QUIET#** on the handset when it is not in use.

ABOUT THE BUILT-IN ANSWERING SYSTEM AND VOICEMAIL SERVICE

For message recording, your telephone has a built-in answering system, and it also supports voicemail service offered by your telephone service provider (subscription is required, and fee may apply).

The main differences between them are:

Category	Built-in answering system	Voicemail from telephone service
Storage	Messages are stored in the telephone base.	Messages are stored in a server or system provided by your telephone service provider.
	Your messages will not be deleted automatically. You have to delete your messages manually.	Your messages may be automatically deleted after a period of time. Contact your telephone service provider for more details.
Display new message	When you received new messages, the handset displays XX new messages , and the message window on the telephone base flashes.	When you received new messages, the handset displays ☒ and New voicemail .

Method to retrieve messages	To retrieve messages:	To retrieve messages, you need an access number and/or a passcode provided by your telephone service provider.
	• Press ►/▲ on the telephone base.	
	• Press MENU on the handset, and then select Play messages ; or	
	• Access remotely with an access code.	

New message indication

When there are new messages in the built-in answering system, the handset displays **XX new messages**, and the message window on the telephone base flashes.

Message window display	Description
☒	No messages.
☒ (flashing)	After a power failure, the number in the message window flashes to indicate that the date and time need to be set.
1-99	Total number of old messages and memos recorded. The current message number during old message playback.
0-99 (flashing)	• Total number of new messages and memos. The number flashes when there are new messages that have not been reviewed. • Current message number during new message playback. • After a power failure, the number in the message window flashes. • Indicate that the date and time need to be set.
1-99 & F (alternating)	Memory is full. Messages must be deleted before new messages can be recorded.
1-8	The telephone base speaker volume level while adjusting.
0-5	The telephone base ringer level while adjusting.

Voice language

NOTE: This feature is available in Canada version only.

The voice prompt language is preset to English. You can select English or French to be used for the voice prompts in your answering system.

- Press **MENU** when the handset is not in use.
- Press **▼** or **▲** to choose **Answering sys** and then press **SELECT**.
- Press **▼** or **▲** to choose **Ans sys setup** and then press **SELECT**.
- Press **▼** or **▲** to choose **Voice language** and then press **SELECT**.
- Press **▼** or **▲** to choose **English** or **Français** and then press **SELECT**.

Announcement

Your outgoing announcement plays when calls are answered by the answering system. The telephone has a default outgoing announcement, “*Hello, please leave a message after the tone.*” You can use this announcement, or record your own.

The announcement can be up to 90 seconds in length.

- Press **MENU** when the handset is not in use.
 - Press **▼** or **▲** to choose **Answering sys** and then press **SELECT**.
 - Press **▼** or **▲** to choose **Answer on/off** and then press **SELECT**.
 - Press **▼** or **▲** to choose **Answer:On** or **Answer:Off**, then press **SELECT** to save.
- Turn on/ off the answering system**
- The answering system must be turned on to answer and record messages.
- When the answering system is turned on, the **ONANS ON/OFF** light on the telephone base turns on and **ANS ON** displays on the handset.
- Press **ONANS ON/OFF** on the base to turn the answering system on or off. - **OR** -
- Press **MENU** when the handset is not in use.
 - Press **▼** or **▲** to choose **Answering sys** and then press **SELECT**.
 - Press **▼** or **▲** to choose **Answer on/off** and then press **SELECT**.
 - Press **▼** or **▲** to choose **Answer:On** or **Answer:Off**, then press **SELECT** to save.

ANSWERING SYSTEM SETTINGS

Set your built-in answering system

The answering system can record and store up to 99 messages. Each message can be up to 3 minutes in length. The total storage capacity for the announcement, messages and memos is approximately 14 minutes. The actual recording time depends on individual message characteristics. Messages remain available for replay until you delete them.

If the answering system has less than 3 minutes of recording time left, “*Less than 3 minutes to record*” is announced before the message playback and **Rec mem low** appears on the handset screen.

If the memory is full, the answering system announces, “*Memory is full.*” The number of messages and F flash, alternatively, in the message window, and **Rec mem full** appears on the handset screen. You must delete some messages before recording new ones.

Your answering system allows you to set your announcement, to save and delete messages, activate call screening, to set number of rings before pick up, and to access remotely.

dont la possibilité que vos conversations téléphoniques sans fil soient interférées par d’autres équipements. De plus, si l’installation pas dans une unité murale ou un cabinet fermé qui ne possède pas d’aération adéquate.

Ne faites fonctionner cet appareil qu’avec le type d’alimentation indiqué sur les étiquettes de l’appareil. Si vous ne connaissez pas le voltage de votre maison, consultez votre marchand ou votre fournisseur d’électricité.

Ne déposez rien sur le cordon d’alimentation. Installez cet appareil dans un endroit sécurisé, là où personne ne pourra trébucher sur la ligne d’alimentation ni le cordon téléphonique modulaire.

N’insérez jamais d’objets à travers les fentes et ouvertures de cet appareil, car ils pourraient toucher à des points de tension dangereux ou court-circuiter des pièces, ce qui constituerait un risque d’incendie ou d’électrocution. N’échappez pas de liquides dans l’appareil.

Afin de réduire les risques d’électrocution, ne démontez pas l’appareil, mais apportez-le plutôt à un centre de service qualifié s’il doit être réparé. En enlevant le couvercle, vous vous exposez à des tensions dangereuses ou autres dangers similaires. Un remontage inadéquat peut être à l’origine d’une électrocution lors d’une utilisation ultérieure de l’appareil. Débranchez l’appareil avant de procéder au nettoyage. Utilisez un chiffon humide et doux.

- Si le QR code n’est pas clairement visible, ajustez votre caméra’s focus by moving your device closer or further away until it is clear.

You can also call our Customer Support at 1 (800) 595-9511 [in US] or 1 (800) 267-7377 [in Canada] for help.

CONSERVEZ CES INSTRUCTIONS

- N’utilisez que la pile incluse ou l’équivalent.
- Ne jetez pas la pile au feu. Voir les instructions spécifiques de mise aux rebuts auprès des autorités locales.
- N’ouvrez pas et ne mettez pas le li. L’électrolyte qui s’en échapperait est corrosif et pourrait causer des brûlures ou des blessures aux yeux ou à la peau. L’électrolyte est toxique si avalé.
- Soyez prudents lorsque vous manipulez les piles afin d’éviter les courts-circuits provoqués par des matériaux conducteurs.
- Rechargez la pile incluse avec cet appareil, selon les instructions et limites spécifiées dans ce guide d’utilisation.

Stimulateurs cardiaques implantés dans l’organisme

Les simulateurs cardiaques (s’appiquent uniquement aux téléphones numériques sans fil).

L’organisme “Wireless Technology Research, LLC (WTR)”, une firme de recherche indépendante, a mené une évaluation plausibles matériels et des dispositifs de téléphonie sans fil portatifs et les stimulateurs cardiaques implantés dans l’organisme. Appuyée par l’Administration des aliments et des médicaments (FDA) des États-Unis, la firme WTR recommande aux médecins :

Avs aux détenteurs de stimulateurs cardiaques

- Il doivent tenir le téléphone sans fil à une distance d’au moins six pouces du stimulateur cardiaque.
- Il ne doivent PAS placer le téléphone sans fil directement sur le stimulateur cardiaque, tel que dans une poche de chemise, lorsque celui-ci est en marche.
- Il doivent utiliser le téléphone sans fil en appuyant sur l’oreille qui se trouve dans la direction opposée au stimulateur cardiaque.

L’étude effectuée par l’organisme WRS n’a pas identifié de risques pour les détenteurs de stimulateurs cardiaques causés par les sons qui utilisent un téléphone sans fil à proximité de ceux-ci.

Propriétés des téléphones sans fil

Confidentialité : Les mêmes caractéristiques qui constituent des avantages pour les téléphones sans fil affichent également des restrictions. Les appels téléphoniques sont transmis entre le combiné sans fil et le socle par le biais d’ondes radio ; il y a

Options during playback

- Press **VOL ▼** or **VOL ▲** to adjust the listening volume.
- Press **5** or **OFF** to stop at any time.

Delete your announcement:

- Press **MENU** when the handset is not in use.
- Press **▼** or **▲** to choose **Answering sys** and then press **SELECT**.
- Press **SELECT** to choose **Announcement**.
- The screen displays **Play [2] Del [3] Rec [7]** and it announces “*To play, press 2. To record, press 7.*” Press **3** or **DELETE** to delete your recorded announcement. The handset displays **Annc deleted** and announces “*Announcement deleted.*”

NOTE: After you deleted your own recorded announcement, the answering system answers calls with the default announcement.

Set number of rings

You can set the answering system to answer an incoming call after two, three, four, five or six rings; or toll saver.

If you choose toll saver, the answering system answers a call after two rings when you have new messages, or after four rings when you have no new messages. This enables you to check for new messages and avoid paying unnecessary long distance charges if you are calling from outside your local area.

- Press **MENU** when the handset is not in use.
- Press **▼** or **▲** to choose **Answering sys** and then press **SELECT**.
- Press **▼** or **▲** to choose **Ans sys setup** and then press **SELECT**.
- Press **▼** or **▲** to choose **# of rings** and then press **SELECT**.
- Press **▼** or **▲** to choose from **5, 4, 3, 2**, or **Toll saver**, then press **SELECT** to save.

Turn on or off the message alert tone

When the message alert tone is set to **On**, and there is at least one new message, the telephone base beeps every 10 seconds. The tone stops when all new messages have been reviewed.

- Press **MENU** when the handset is not in use.
- Press **▼** or **▲** to choose **Answering sys** and then press **SELECT**.
- Press **▼** or **▲** to choose **Ans sys setup** and then press **SELECT**.
- Press **▼** or **▲** to choose **Msg alert tone** and then press **SELECT**.
- Press **▼** or **▲** to choose **Tone:On** or **Tone:Off**, then press **SELECT** to save.

NOTE: The message alert tone beeps only if all the following conditions are met.

- Answering system is on.

- Message alert tone setting is on.

- There are new messages.

Playback messages

You can listen to messages at the telephone base or on a cordless handset. When playback begins, the total number of messages is announced. Before each message, you hear the day and time of the recording. After the last message, you hear, “*End of messages.*” Make sure you set the date and time correctly. Refer to **Set date and time** for more details.

To listen to messages at the base:

- Press **►/PLAY** when the phone is not in use.
- When you have no message in the answering system, the telephone base announces, “*You have no message.*”

Options during playback

- Press **▲VOL** + or **▼VOL** - to adjust the listening volume.
- Press **►/SKIP** to skip to the next message.
- Press **◄/REPEAT** to repeat the playing message. Press **◄/REPEAT** twice to listen to the previous message.
- Press **X/DELETE** to delete the playing message. The telephone base advances to the next message.
- Press **►/STOP** to stop the playback.

To listen to messages with the handset:

- Press **MENU** when the handset is not in use. The handset displays **Play messages**.
- Press **SELECT**. If you have either new or old messages, the messages play automatically.
 - The system announces the number of messages, and then begins playback. The message sequence is shown on the handset’s screen.
- Press **OFF** to stop the playback.

Options during playback

- Press **►/VOLUME** or **▲/VOLUME** to adjust the listening volume.
- Press **6** to skip to the next message.
- Press **4** to repeat the playing message. Press **4** twice to listen to the previous message.
- Press **3** or **MUTE/DELETE** to delete the playing message. The telephone base advances to the next message.
- Press **OFF** to stop the playback.

Delete all messages

Using the base

- Press **X/DELETE** when the telephone is not in use. The telephone announces - *To delete all old messages, press DELETE again.*
- Press **X/DELETE** again. All previously reviewed messages are erased and the telephone announces - *All old messages deleted.*

NOTE: The message alert tone beeps only if all the following conditions are met.

or late evening.

Industry Canada

This device contains licence-exempt transmitter(s)/receiver(s) that comply with Innovation, Science and Economic Development Canada’s licence-exempt RSS(s). Operation is subject to the following two conditions: (1) this device may not cause harmful interference, and (2) this device must accept any interference that it may receive, including interference from licensed radio services.

(1) This device may not cause interference.

(2) This device must accept any interference, including interference that may cause undesired operation of the device. Privacy of communications may not be ensured when using this telephone.

To ensure safety of users, the FCC has established criteria for the amount of radio frequency energy that can be safely absorbed by a user or bystander originating at the intended usage of the product. This product has been tested and found to comply with the FCC criteria. The handset may be safely held against the ear of the user. The telephone base shall be installed and used such that parts of the user’s body other than the hands are maintained at a distance of approximately 20 cm (8 inches) or more.

This Class B digital apparatus complies with Canadian requirements: ICES-003 (B)/NMB-3(B).

FCC Part 68 and ACTA

This equipment complies with Part 68 of the FCC rules and with technical requirements adopted by the Administrative Council for Terminal Attachments (ACTA). The label on the back of the terminal equipment contains this equipment certification and a product identifier in the format USAAEG#XXXXX. This identifier must be provided to your telephone service provider upon request.

The plug and jack used to connect this equipment to premises wiring and the telephone network must comply with applicable Part 68 rules and technical requirements adopted by ACTA. A compliant telephone cord and modular plug is provided with this product. It is designed to be connected to a compatible modular jack that is also compliant. An RJ11 jack should normally be used for connecting to a single line and an RJ14 jack for two lines. See the installation instructions in the user’s manual. The Ringer Equivalence Number (REN) is used to determine how many devices you may connect to your telephone line and to the network. The value you are called to the REN for this product is encoded as the 6th and 7th characters following the US: in the product identifier (e.g., if ## is 03, the REN is 0.3). In most, but not all areas, the sum of the REN values should be 5.0 or less. For more information, please contact your telephone service provider.

This equipment must not be used with Party Lines. If you have specially wired alarm dialing equipment connected to your telephone line, ensure the connection of this equipment does not disable your alarm equipment. If you have questions about what will disable alarm equipment, please contact your telephone service provider or a qualified installer.

If this equipment is malfunctioning, it must be unplugged from the modular jack until the problem has been corrected. The product must then be plugged back in. Then the telephone base is powered up as normal.

- While you press and hold **IFIND HANDEST**, plug the telephone base power adapter back to the power outlet.
- After about 20 seconds, when the **IN USE** light starts flashing, release **IFIND HANDEST** and then press it again within 2 seconds.

When the phone successfully enters the CEC battery charging testing mode, the **IN USE** light turns off and all handsets display **1.PRESS FND HS ON BASE 4 SEC** and **2.THEN PRESS # ON HANDEST** Alternately.

When the phone fails to enter this mode,