

IMPORTANT SAFETY INSTRUCTIONS

SUITABLE FOR HOUSEHOLD USE ONLY.

and hyperthermia

WARNING

TO REDUCE THE RISK OF FIRE, ELECTRIC SHOCK, **OR** INJURY, READ ALL THESE INSTRUCTIONS BEFORE USE.

1. Read all instructions before use.
2. This appliance has a polarized plug (one blade is wider than the other). To reduce the risk of electric shock, this plug is intended to fit in a polarized outlet only one way. If the plug does not fit fully in the outlet, reverse the plug. If it still does not fit, contact a qualified electrician. Do not attempt to defeat this safety feature. Unplug or disconnect the appliance from the power supply before servicing.
2. **DO NOT** operate any appliance with a damaged cord or plug. Discard appliance or return to an authorized service facility for examination and/or repair.
3. **DO NOT** run cord under carpeting. **DO NOT** cover cord with throw rugs, runners, or similar coverings. **DO NOT** route cord under furniture or appliances. Keep cord away from high traffic areas and place cord where it will not be tripped over.
4. If the power cord is damaged, it must be replaced by the manufacturer, its service agent, or similarly qualified persons in order to avoid a hazard.
5. This appliance is not intended for use by anyone (including children) with reduced physical, sensory or mental capabilities, or lack of experience and knowledge, unless they have been given supervision or instruction concerning use of the appliance by a person responsible for their safety.
6. Children should be supervised to ensure that they **DO NOT** play with the appliance.
7. Cleaning and user maintenance shall not be made by children without supervision.
8. Prior to cleaning or other maintenance, the appliance must be unplugged from the electrical outlet.
9. **DO NOT** handle plug or appliance with wet hands.
10. **DO NOT** use without filter in place.
11. Only use Shark™ branded filters and accessories.
12. **DO NOT** damage the power cord:
 - a) **DO NOT** pull or carry appliance by the cord or use the cord as a handle.
 - b) **DO NOT** unplug by pulling on cord. Grasp the plug, not the cord.
 - c) **DO NOT** stand the appliance on the power cord, close a door on the cord, pull the cord around sharp corners, or leave the cord near heated surfaces.
13. **DO NOT** use with any opening blocked; keep free of dust, lint, hair, and anything that may reduce airflow.
14. **DO NOT** use if airflow is restricted. If the air paths become blocked, turn the appliance off and unplug from electrical outlet. Remove all obstructions before you plug in and turn on the unit again.
15. **DO NOT** use if appliance is not working as it should, or has been dropped, damaged, left outdoors, or dropped into water.
16. **DO NOT** place appliance on unstable surfaces such as chairs or other furniture.
17. **DO NOT** use in the following areas:
 - a) Wet or damp surfaces
 - b) Outdoor areas
 - c) Spaces that are enclosed and may contain explosive or toxic fumes or vapors (lighter fluid, gasoline, kerosene, paint, paint thinners, mothproofing substances, or flammable dust)

18. Turn off all controls before unplugging the appliance.
19. Unplug from electrical outlet when not in use and before any maintenance or cleaning.
20. Hand wash with soapy water only. Washing with cleaning chemicals could damage the unit.
21. Make sure filter is in place after routine maintenance.
22. Not suitable for use with solid-state speed controls.

IMPORTANT INSTRUCTIONS

23. This heater is hot when in use. To avoid burns, do not let bare skin touch hot surfaces. If provided, use handles when moving this heater. Keep combustible materials, such as furniture, pillows, bedding, papers, clothes, and curtains at least 3 feet (0.9 m) from the front of the heater and keep them away from the sides and rear.
24. Clearance distance is to be determined in accordance with 67.13 or 67.14.
25. Extreme caution is necessary when any heater is used by or near children or invalids and whenever the heater is left operating and unattended.
26. This heater is not intended for use in bathrooms, laundry areas and similar indoor locations. Never locate heater where it may fall into a bathtub or other water container.
27. Do not insert or allow foreign objects to enter any ventilation or exhaust opening as this may cause an electric shock or fire or damage the heater.
28. To prevent a possible fire, do not block air intakes or exhaust in any manner. Do not use on soft surfaces, like a bed, where openings may become blocked.
29. A heater has hot and arcing or sparking parts inside. Do not use it in areas where gasoline, paint, or flammable liquids are used or stored.
30. Use this heater only as described in this manual. Any other use not recommended by the manufacturer may cause fire, electric shock, or injury to persons.
31. Always plug heaters directly into a wall outlet/receptacle. Never use with an extension cord or relocatable power tap (outlet/power strip).

33) Hyperthermia can result in death. Symptoms of hyperthermia include high body temperature, headache, nausea, vomiting, tiredness, dizziness, fainting, and rapid pulse. If you begin to experience symptoms related to hyperthermia, turn off the heater and seek medical attention.

34) To avoid excessive room temperatures which can cause hyperthermia: **DO NOT** leave product running unattended in a confined space around infants, or individuals with reduced physical, sensory, or mental capabilities.

CAUTION – High temperature, keep electrical cords, drapery, and other furnishings at least 3 feet (0.9 m) from the front of the heater and away from the side and rear.

WARNING – Risk of Hyperthermia.

CAUTION: Risk of Fire – Do Not Operate Without Base Attached.

READ AND SAVE THESE INSTRUCTIONS

FCC Statement

This device complies with Part 15 of the FCC Rules. Operation is subject to the following two conditions: (1) this device may not cause harmful interference, and (2) this device must accept any interference received, including interference that may cause undesired operation.

Changes or modifications not expressly approved by the party responsible for compliance could void the user's authority to operate the equipment.

This equipment has been tested and found to comply with the limits for a Class B digital device, pursuant to part 15 of the FCC Rules. These limits are designed to provide reasonable protection against harmful interference in a residential installation. This equipment generates, uses and can radiate radio frequency energy and, if not installed and used in accordance with the instructions, may cause harmful interference to radio communications. However, there is no guarantee that interference will not occur in a particular installation. If this equipment does cause harmful interference to radio or television reception, which can be determined by turning the equipment off and on, the user is encouraged to try to correct the interference by one or more of the following measures:

—Reorient or relocate the receiving antenna.

—Increase the separation between the equipment and receiver.

—Connect the equipment into an outlet on a circuit different from that to which the receiver is connected.

—Consult the dealer or an experienced radio/TV technician for help.

This equipment complies with FCC radiation exposure limits set forth for an uncontrolled environment. This equipment should be installed and operated with a minimum distance of 20cm between the radiator and any part of your body.

ISED Statement:

This device contains licence-exempt transmitter(s)/receiver(s) that comply with Innovation, Science and Economic Development Canada's licence-exempt RSS(s). Operation is subject to the following two conditions:

1. This device may not cause interference.
2. This device must accept any interference, including interference that may cause undesired operation of the device.

L'émetteur/récepteur exempt de licence contenu dans le présent appareil est conforme aux CNR d'Innovation, Sciences et Développement économique Canada applicables aux appareils radio exempts de licence. L'exploitation est autorisée aux deux conditions suivantes :

1. *L'appareil ne doit pas produire de brouillage;*
2. *L'appareil doit accepter tout brouillage radioélectrique subi, même si le brouillage est susceptible d'en compromettre le fonctionnement.*

This equipment complies with ISED RSS-102 radiation exposure limits set forth for an uncontrolled environment. This equipment should be installed and operated with a minimum distance of 20cm between the radiator and any part of your body.

Pour se conformer aux exigences de conformité CNR 102 RF exposition, une distance de séparation d'au moins 20 cm doit être maintenue entre l'antenne de cet appareil et toutes les personnes.

Please be sure to read and save the warnings on other side prior to using your unit.

QUICK START GUIDE

ASSEMBLY

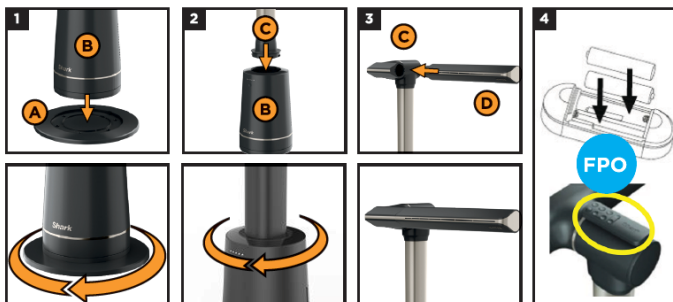


visit qr.sharkclean.com/TF200series or
SCAN HERE
USING YOUR SMARTPHONE CAMERA
FOR FULL INSTRUCTIONS OR
TO PURCHASE ACCESSORIES.

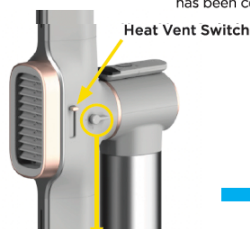
Includes:



ASSEMBLY



1. Use assembly stickers to align the **Base** onto the **Base Plate**. Rotate the base clockwise until it clicks into place.
2. Use assembly stickers to align the red arrow printed on the **Pole** with the red arrow printed on the **Base**. Twist the **Pole** clockwise to lock it into the **Base**. Remove tape after assembly has been completed.
3. Remove assembly tape and cardboard from **Pole**. Line up the printed red circle on the **Blade** with the red circle on the inner **Pole**. Press the **Blade** firmly into the **Pole** until it clicks into place. Repeat on other side.
4. Install the 2 AAA batteries in the remote. Make sure the batteries are installed with the correct polarity (+ and -). Store the remote on the magnetic mount on the back of the **Pole**.



HEAT MODE

FAN MODE

Heat/Fan Dial

Rotate the dial on the pole to switch between heat or fan.

HEAT CUSTOMIZATION

- (H) THERMOSTAT**
Auto-adjust based on your set temperature
- (G) HEAT MODES**
Specialized settings for any situation. Different settings for heat and fan.
 - Defrost:** use to quickly warm yourself up.
 - Personal:** use for comfort when 3-6 feet away from the unit.

Use the vent switch located next to the heat/fan dial to adjust heater direction.

- (A) BRIGHTNESS**
Press to adjust the brightness of the UI panel. Choose between 4 levels of brightness.
- (B) POWER**
Power unit on or off. Heat may take a moment to cool down after it has been turned off.
- (C) OSCILLATION**
Select 45, 90, or 180 degrees of oscillation. Setting 1 is 45 degrees, setting 2 is 90 degrees, and setting 3 is 180 degrees.

Display



Remote



- (C) TIMER**
Turn unit off automatically at 1, 2, 4, 8, or 12 hours.
- (C) + (D) MUTE CHIME**
Hold oscillation and timer for 5 seconds to mute chimes. Repeat to re-enable.
- (E) ANGLE ADJUST**
Press the left and right arrow to slightly adjust the direction of fan.

FAN CUSTOMIZATION

- (F) SPEED ADJUST**
Switch between fan speeds 1 to 10.
- (G) FAN MODES**
Specialized settings for any situation. Different settings for heat and fan.
 - Sleep mode:** Mute chimes, dim lights, and switch to an ideal fan speed for sleep.
 - BreezeBoost™:** For a powerful burst of airflow.
 - Natural Breeze:** Varying airflow patterns to simulate natural wind.

PRODUCT TIPS

PIVOT AND TILT: Manually adjust the fan blade's orientation (1) and tilt (2) to personalize your airflow.

NOTE: THE BLADE ONLY ROTATES COUNTERCLOCKWISE WHEN IN THE VERTICAL ORIENTATION.



DUST DEFENSE Panel on the rear of the unit collects the dust to make cleaning easier.



CARRYING POSITION: Carry the unit by the handle on the base while supporting the air duct.

