

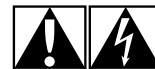


 **Bluetooth**

Logitech®  
Cordless Headset for  
PC & Mobile Phones

User Manual

## IMPORTANT SAFETY INSTRUCTIONS

**CAUTION  
ELECTRIC SHOCK HAZARD**

- Read these instructions.
- Keep these instructions.
- Heed all warnings.
- Follow all instructions.
- Do not use this apparatus near water.
- Clean only with dry cloth.
- Do not block any ventilation openings. Install in accordance with the manufacturer's instructions.
- Do not push objects into apparatus vents or slots because fire or electric shock hazards could result.
- Ventilation should not be impeded by covering the ventilation openings with items, such as newspapers, table clothes, curtains, etc.
- No naked (open) flame sources, such as lighted candles, should be placed on or near the apparatus.
- Do not install near any heat sources such as radiators, heat registers, stoves, or other apparatus (including amplifiers) that produce heat.
- Protect the power cord from being walked on or pinched particularly at plugs, convenience receptacles, and the point where they exit from the apparatus.
- Only use attachments/accessories specified by the manufacturer.
- Unplug this apparatus during lightning storms or when unused for long periods of time.
- Refer all servicing to qualified service personnel. Servicing is required when the apparatus has been damaged in any way, such as power-supply cord or plug is damaged, liquid has been spilled or objects have fallen into the apparatus, the apparatus has been exposed to rain or moisture, does not operate normally, or has been dropped.
- The apparatus shall be disconnected from the mains by unplugging the power cord of the apparatus from the AC mains receptacle.
- The socket-outlet shall be installed near the equipment and shall be easily accessible.

**WARNING:**  
**TO REDUCE THE RISK OF FIRE OR  
ELECTRIC SHOCK, DO NOT EXPOSE THIS  
APPARATUS TO RAIN OR MOISTURE.**

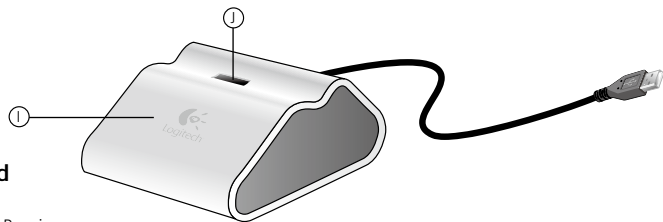
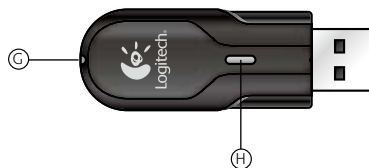
## Headset Overview

- A. WindStop™ microphone
- B. LED indicator
- C. Volume down: lowers volume
- D. Volume up: raises volume
- E. Adjustable/reversible ear piece
- F. Multi-Function Button: Power on/off, answer/end calls



## USB Receiver Overview

- G. Receiver LED
- H. Connect Button



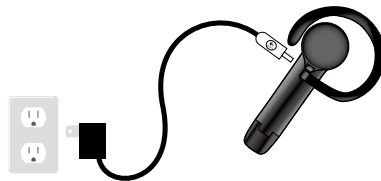
## Extender Stand

- I. Extender stand
- J. USB port for USB Receiver

## Charge Headset Battery

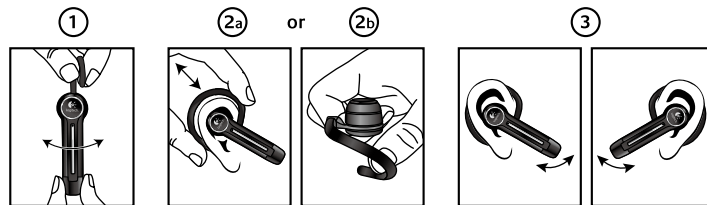
The Logitech® Cordless Headset comes with a lithium-ion rechargeable, non-replaceable battery that must be fully charged before you use the headset for the first time.

1. Connect the power adapter to the headset. Plug the AC adapter into the electrical outlet.
2. The LED will be red when charging. If the LED is not red, check the connection.
3. During charging, the red LED will be lit. When the Logitech® Cordless Headset is fully charged, the red LED turns off. Charging can take up to 4 hours.
4. Remove the AC adapter from the headset.
5. Your headset is now ready for set-up with your PC or mobile phone. See the Quick Start Guide for details on pairing.



## Comfort and Fit

1. Rotate the rubber earpiece around the headset for use on either ear.
- 2a. Place the earpiece behind your ear and rotate the product to your comfort.  
OR
- 2b. With one hand, hold earpiece out from the headset and slide product over your ear.
3. Rotate microphone boom so it is pointing toward the corner of your mouth.

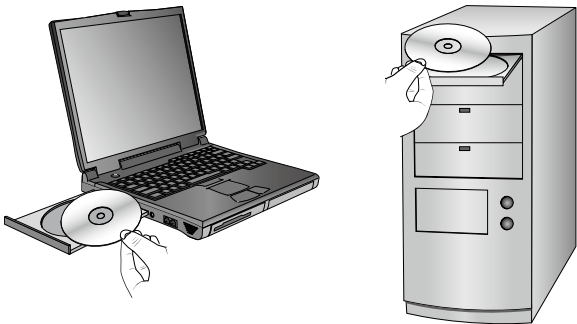


## Using the Cordless Headset with Your PC

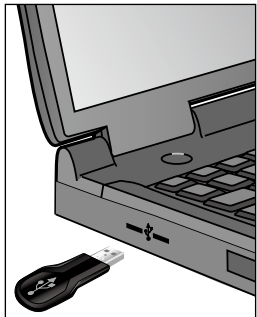
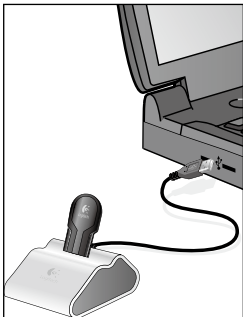
Note: The headset can be used with only one device at a time, either the PC or a mobile phone.

### 1. Install the software first.

Before plugging in the receiver, the software must be installed.



2. Wait until prompted by the software, and then connect the USB receiver to the convenient extender stand (preferred) or to an available USB port on your computer.



## Connecting Your Headset to the USB Receiver (PC)

1. With the USB receiver now plugged into the extender stand (preferred) or an available USB port and the headset in close proximity to the USB receiver, press the Multi-Function Button on the headset for 2 seconds and release to turn on the headset. There is no need to press the button on the USB receiver. Connection should take place automatically.

Wait approximately 20 seconds, the USB receiver and headset should automatically connect. When connected you will see 2 blue flashes at regular intervals on the receiver. If your headset is still not connected, unplug the USB receiver and plug it back in while the headset is on and wait another 20 seconds for connection to take place.

### 2. Shutting down your computer and headset.

You do not need to unplug your USB receiver when you shut down. However we recommend turning off your headset to prevent power drain.

#### Answering a call on the PC.

Your PC must be on with your headset connected and the PC calling application running. When you hear a ring, simply press the Multi-Function Button a single time to answer the call. When you wish to hang up, simply press the same Multi-Function Button again.

### 3. Rebooting your PC.

If you have not removed the USB receiver from your computer (or unplugged it from the receiver stand) simply turn on your headset. After your PC has completely rebooted and is running, simply wait 20 seconds for the headset to reconnect.

### 4. Disconnecting the headset from the receiver (in order to pair it with your mobile phone).

In the CallCentral™ software, select "Disconnect" or press and release the button on the USB receiver once. This will disconnect the USB receiver.

To learn how to connect your headset to your phone, see the next section (page 8), "Using Your Cordless Headset with Your Mobile Phone."

#### Open the CallCentral™ software.

Click on the disconnect button (note: disconnect can also be accomplished by pressing the button on the USB receiver once). The LED on the USB receiver will emit a single blue flash.

### 5. Reconnecting your headset to the USB receiver.

Turn on your headset. Plug in the USB receiver if it is not already plugged in. Connection will automatically be initiated (wait 20 seconds for it to complete).

If receiver is already plugged in, choose connect in the software or press and release the button on the USB receiver. Both actions will initiate connection. Wait approximately 20 seconds for connection to complete.

## Turning Off Your Headset

Press the Multi-Function Button (MFB) continuously on the headset for more than 3 seconds.

Here is a complete chart showing all of the PC functions:

How to	What you do	What you see	What you hear
Turning on headset	Press MFB on headset for 2 seconds	5 Blue LED flashes, then slow Blue LED flashes	Brief low-to-high tone
Connecting to USB Receiver	Turn on headset, plug in USB Receiver to USB port, wait 20 seconds	3 repeating Blue flashes on headset; 2 repeating Blue flashes on dongle	No tone
Notification Incoming Call	No action	3 Repeating Blue flashes on headset; Alternating red/blue flashes on dongle	Melody on headset
Answering Call on headset	Press MFB on headset briefly	4 Repeating Blue Flashes on headset; Solid Blue LED on dongle	Single beep when answered
Answering Call on PC	Click on-screen button with mouse to answer call	4 Repeating Blue Flashes on headset; Solid Blue LED on dongle	Normal call audio
Call in Progress Notification	No action	4 Repeating Blue Flashes on headset; Solid Blue LED on dongle	No beeps
Ending Call from headset	Press MFB on headset briefly	3 repeating Blue flashes on headset; 2 repeating Blue flashes on dongle	Single beep
Ending Call on PC	Click on-screen button with mouse to end call	3 repeating Blue flashes on headset; 2 repeating Blue flashes on dongle	Single beep
MIC Mute-On	Press and hold Vol(+) and Vol(-) buttons simultaneously for 3 seconds	4 Repeating Blue Flashes on headset; Solid Blue LED on dongle	Beep every 30 seconds
Ending MIC Mute	Press and hold Vol(+) and Vol(-) buttons simultaneously for 3 seconds	4 Repeating Blue Flashes on headset; Solid Blue LED on dongle	Single beep
Placing Outgoing call from PC	Click on button on PC with mouse to place outgoing call	4 Repeating Blue Flashes on headset; Solid Blue LED on dongle	Normal call audio
Incoming Call Reject	Press MFB for 3 seconds	4 Repeating Blue Flashes on headset; 2 repeating Blue flashes on dongle	Double beep
Low Battery Notification	No action	Repeating Red flashes on headset	Beep every 30 seconds
Standby or Connected Notification	No action	3 repeating Blue flashes on headset; 2 repeating Blue flashes on dongle	No Audio
Turning Off headset	Press MFB for 2 seconds	5 Red LED flashes on headset; Slow repeating single Blue flash on dongle	High to low tone
Charging headset	Plug AC adapter into headset then into electrical outlet	Continuous Red LED	No beeps
Disconnect from PC	Press dongle button once, short press, <1 second	Blue blink on headset; 1 repeating Blue blink on dongle	No beeps
Reconnect to PC	Disconnect from phone, press button on dongle, short press	3 repeating Blue flashes on headset; 2 repeating Blue flashes on dongle	No tone

## The Audio Tuning Wizard

The first time that you start your Logitech® Cordless Headset software, it guides you through the Microphone/Speaker Setup Utility and Audio Tuning Wizard that lets you do the following:

- Select the audio input device (microphone) and audio output device (speakers).
- Specify microphone input volume and speaker output volume.
- Test audio settings.

**Tip:** To modify these settings later, start your Cordless Headset software, click the **Settings** Button, and then click the **Audio** tab.



## Start Using Your Cordless Headset

Your cordless headset is now set up and ready to provide you with seamless audio in your internet calls. Just open a supported PC calling application, and then begin placing calls. See packaging for a list of supported applications.

## Modify Your Cordless Headset Settings

To modify your cordless headset settings:

1. Start the **CallCentral™** software by doing either of the following:
  - On your desktop, double-click the **CallCentral™** icon.
  - OR
  - In the lower-right corner of your desktop in the taskbar, click the **Cordless Headset** icon.
2. Click the **Settings** Button.
3. Click the **Audio** tab.
4. Modify as desired.

## Using Your Cordless Headset with Your Mobile Phone

### Check for phone compatibility.

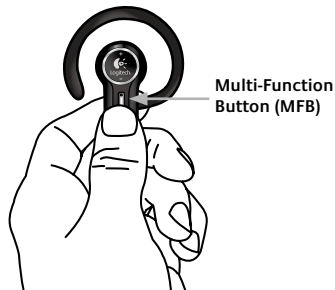
The Logitech® Cordless Headset is compatible with most Bluetooth® enabled mobile phones. Consult your phone manufacturer for more information on compatibility.

Before pairing headset to phone, follow all charging and comfort and fit information on page 3.

### To “pair” your headset to a Bluetooth® enabled mobile phone.

1. If your headset is connected to the PC (USB Receiver), disconnect it.
2. Turn on your phone. Turn off the headset. Make sure the battery is charged in both devices.
3. Press and hold the Multi-Function Button until the headset indicator light flashes blue and red (about 10 seconds).
4. The headset now is in Pairing mode. Release the button. The indicator light will continue flashing red and blue.
5. Follow the pairing instructions for your Bluetooth® phone. Typically, this is done by going to a ‘setup’ or ‘connect’ menu on your phone and then selecting the options to ‘discover’ Bluetooth® devices.
6. Your phone should find the ‘Logitech HS05-Vxx’ headset. Confirm to pair.
7. Your phone should prompt you for a passkey or PIN. The PIN/passkey is: **0000**.
8. If pairing was successful, the headset LED will flash blue (3 repeating blue blinks).
9. If pairing fails, turn the headset and phone off and repeat the process.
10. Red and blue flashing will return to stand-by mode (blue flashing LED) if not paired in 2 minutes.

Note: It is not necessary to repeat the above pairing process every time you want to reconnect the headset to the phone. Once paired, simply go to your phone’s “set-up” or “connect menu” and select the ‘Logitech HS05-Vxx’ and choose “connect.”



## Using Your Logitech® Cordless Headset

Note: The features listed below are phone dependent. Check your phone user’s manual.

1. **Starting a Call**  
Dial the numbers on your mobile phone keypad. When the call is connected, your headset will automatically connect to the phone to take the call.
2. **Using Voice Dialing**  
Press and release the Multi-Function Button when in standby mode. Your phone may show a voice dialing request on the screen. A click will be heard in the headset. After the click, speak the name of the person you are calling. Call voice tags are pre-recorded in the phone.
3. **Ending a Call**  
Press and release the Multi-Function Button on the headset when in call mode, or end call from mobile phone keypad.
4. **Answering a Call**  
After an incoming ring tone, press and release the Multi-Function Button once. Or, you can answer the call with your mobile phone’s keypad. To transfer a call to your headset, press and release the Multi-Function Button once or use the menu on your phone.
5. **Muting a Call**  
Press the Volume (+) and Volume (-) simultaneously for 3 seconds while in a call. You will hear a beep the first time and every 30 seconds afterwards.
6. **Ending Mute**  
Press the Volume (+) and Volume (-) simultaneously for 3 seconds while in Mute mode. You will hear a beep.
7. **Last Number Redial**  
When in Standby Mode, press the Volume (-) button for at least 3 seconds. You will hear a beep after pressing the button and the last number will be dialed.
8. **Night Mode**  
Press all three buttons, Volume (-), Volume (+), and Multi-Function Button simultaneously for 3 seconds. The light will not display and 4 quick beeps will be heard. Pressing the same three buttons again will release the headset from Night Mode.
9. **Disconnecting the headset from the Phone (in order to connect to the USB receiver).**  
Go to the Bluetooth® menu on the phone. “Drop” or “disconnect the headset” (you do not need to delete the headset entry). Turn off your phone. Follow the process to reconnect the headset to the USB receiver.

## Mobile Phone Feature Summary

The Logitech® Cordless Headset supports call reject and other advanced features. See the Headset Operation Summary Table below for a full summary of standard features supported.

### Standard Features

How to	What you do	What you see	What you hear
Turning On Headset	Press Multi-Function Button (MFB) briefly	5 BLUE LED Flashes, then slow BLUE LED Flashes	Brief low-to-high-tone
Incoming Call Notification	No action	3 repeating BLUE flashes	Melody increases in volume
Answering Call	Press MFB briefly	3 repeating BLUE flashes	Single beep when answered
Call in Progress	No action	4 repeating BLUE flashes	No beeps
Ending call	Press MFB briefly	3 repeating BLUE flashes	Single beep
To Pair	From Off state, press and hold MFB button for 10 seconds	Alternating BLUE/RED LED flashes, BLUE flashing LED when paired	Single high-low tone beep
Standby or connected	No action	1 or 3 repeating BLUE Flashes	No audio
Voice Dialing	Press MFB when in standby or connected	4 repeating BLUE flashes	Single beep
MIC Mute-on	Press and hold Vol(+) and Vol(-) button simultaneously for 3 seconds	4 repeating BLUE flashes	Beep every 30 seconds
Ending MIC mute	Press and hold Vol(+) and Vol(-) button simultaneously for 3 seconds	4 repeating BLUE flashes	Single beep
Low Battery	No action	Slowly repeating RED flashes	Beep every 30 seconds
Turning Off	Press MFB for more than 3 seconds	5 brief RED flashes	High-to-low tone
Charging Notification	No action	Continuous ORANGE LED	-
Enter Night Mode	Press all three buttons for 3 seconds	Nothing	4 quick tones
Release Night Mode	Press all three buttons for 3 seconds	4 BLUE LED flashes	4 quick tones

### Handsfree Functions - supported by phones that have this feature

Last Number Redial	Press Volume (-) for 3 or more seconds	4 repeating BLUE flashes	A double Beep
Incoming Call Reject	Press MFB for more than 3 seconds	4 repeating BLUE flashes	A double Beep

These features are supported by phones that support Handsfree Mode

Note: MFB stands for Multi-Function Button; CDMA and GSM phones handle these functions differently. Please check with your service provider and mobile phone vendor for details.

## End-of-life Battery Disposal Instructions

This device uses a Lithium-ion battery that should last the lifetime of the device. If you suspect your battery may be dead, try charging it. If the battery does not recharge, please follow instructions below for proper disposal. **The Logitech® Cordless Headset for PC and Mobile Phones does not have a user-serviceable battery. Please do NOT attempt to change the battery.** If the battery has died, you should follow the disposal instructions below. Consult local laws and regulations for proper battery disposal in your region. If there are no local regulations concerning battery disposal, please dispose of the device in a waste bin for electronic devices.



**Caution:** The battery used in this device may present a risk of fire, explosion or chemical burn if mistreated.

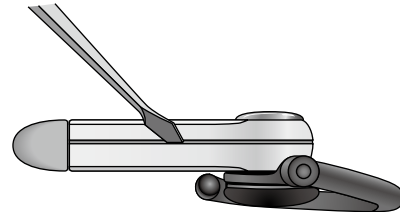
Do not expose battery to heat above 130° F (54°C), or incinerate. Do not use or charge the batteries if they appear to be leaking, discolored, deformed, or in any way abnormal. Do not leave your batteries discharged or unused for extended periods of time. When batteries are misused, they may explode or leak, causing burns and personal injury. If your batteries leak, use normal precaution and discard the batteries immediately.

Leaking batteries can cause skin burns or other personal injury. Do not dispose of batteries in a fire. Do not immerse batteries in water. Keep batteries out of reach of children.

### Recycling Information for Lithium-ion Batteries.

#### Battery Removal (Destruction of headset will result).

1. Remove ear pad.
2. Use flat screw driver to open headset as shown.
3. Disconnect battery connector from circuit board.
4. Do not place in trash. Dispose of battery according to local battery recycling laws.



## Frequently Asked Questions

**Q Can I use my Bluetooth® Mobile Phone or cordless headset on a commercial airplane?**

**A** This is airline dependent. Most carriers do not allow using Bluetooth® while in flight. Confirm with the aircraft carrier for details.

**Q What is the range of my headset?**

**A** The RF transmission energy from your headset is much lower than from your mobile phone. Useful headset range is about 30 feet and tends to be better indoors than out.

**Q Can other mobile phone users listen in on my conversation while using a headset?**

**A** Once your headset is paired with your phone or PC, you have a private link to which only you can listen.

**Q Is my headset communication secure?**

**A** The Bluetooth® specification provides for a very secure connection. The Logitech® Cordless Headset is fully compatible with these specifications.

**Q Will my headset work with my cordless phone at home?**

**A** This headset is designed to work with Bluetooth® mobile phones and any other device, such as a PDA or PC, that supports the Bluetooth® headset or Handsfree profile.

**Q Can I use my headset while it is charging?**

**A** For safety reasons, it is designed to work only when the charger is removed.

**Q How can I keep my headset clean?**

**A** Wipe with a clean cloth. Do not expose to liquids.

## Limited Warranty

Logitech® warrants that any hardware product accompanying this documentation shall be free from significant defects in material and workmanship for a period of two (2) years from the date of purchase. Logitech's limited warranty is nontransferable and is limited to the original purchaser. This warranty gives you specific legal rights, and you may also have other rights which vary under local laws.

Remedies. Logitech's entire liability and your exclusive remedy for any breach of warranty shall be, at Logitech's option, to: (a) repair or replace the hardware, provided that the hardware is returned to the point of purchase or such other place as Logitech may direct, with a copy of the sales receipt, or (b) refund the price paid. Any replacement hardware will be warranted for the remainder of the original warranty period or thirty (30) days, whichever is longer. These remedies are void if failure of the hardware has resulted from accident, abuse, or misapplication, or any unauthorized repair, modification or disassembly. Upon request from Logitech, you must prove the date of original purchase of the hardware by a dated bill of sale or dated itemized receipt.

Disclaimer of warranty. The warranties expressly set forth in this agreement replace all other warranties. Logitech AND ITS SUPPLIERS expressly disclaim all other warranties, including, but not limited to, the implied warranties of merchantability and fitness for a particular purpose and noninfringement of third-party rights with respect to the HARDWARE. No Logitech dealer, agent, or employee is authorized to make any modification, extension, or addition to this warranty. Some jurisdictions do not allow limitations on how long an implied warranty lasts, so the above limitation may not apply to you.

Limitation of liability. In no event will Logitech or its suppliers be liable for any costs of procurement of substitute products or services, lost profits, loss of information or data, or any other special, indirect, consequential, or incidental damages arising in any way out of the sale of, use of, or inability to use any Logitech product or service, even if Logitech has been advised of the possibility of such damages. In no case shall Logitech's AND ITS SUPPLIERS' TOTAL liability exceed the actual money paid for the Logitech product OR SERVICE GIVING RISE TO THE LIABILITY. Some jurisdictions do not allow the exclusion or limitation of incidental or consequential damages, so the above limitation or exclusion may not apply to you. The above limitations will not apply in case of personal injury where and to the extent that applicable law requires such liability.



## Regulatory Information

### FCC and IC Statement

This Class B digital apparatus complies with Canadian ICES-003 and part 15 of the FCC Rules. Operation is subject to the following two conditions: (1) This device may not cause harmful interference, and (2) this device must accept any interference received, including interference that may cause undesired operation. Note: The manufacturer is not responsible for ANY interference, for example RADIO OR TV interference, caused by unauthorized modifications to this equipment. Such modifications could void the user's authority to operate the equipment.

NOTE: This equipment has been tested and found to comply with the limits for a Class B digital device, pursuant to Part 15 of the FCC Rules. These limits are designed to provide reasonable protection against harmful interference in a residential installation. This equipment generates, uses and can radiate radio frequency energy and, if not installed and used in accordance with the instructions, may cause harmful interference to radio communications. However, there is no guarantee that interference will not occur in a particular installation. If this equipment does cause harmful interference to radio or television reception, which can be determined by turning the equipment off and on, the user is encouraged to try to correct the interference by one or more of the following measures:

- Reorient or relocate the receiving antenna.
- Increase the separation between the equipment and receiver.
- Connect the equipment into an outlet on a circuit different from that to which the receiver is connected.
- Consult the dealer or an experienced radio/TV technician for help.

### Customer Service

If you need additional help with your product, contact Logitech® at (702) 269-3457 or on the web at [www.logitech.com/support](http://www.logitech.com/support).

Country	Address	Infoline Product Information	Hotline Technical Help
EUROPEAN, MIDDLE EASTERN & AFRICAN HEADQUARTERS LOGITECH Trading S.A.	Moulin-du-Choc CH 1122 Romanel-sur-Morges	+41 (0) 21 863 54 00 English FAX +41 (0) 21 863 54 02	+41 (0) 21 863 54 01 English FAX +41 (0) 21 863 54 02
CORPORATE HEADQUARTERS LOGITECH Inc.	6505 Kaiser Drive USA Fremont, CA 94555	(800) 231-7717	+1 702 269 3457
ASIAN PACIFIC HEADQUARTERS LOGITECH Far East Ltd.	#2 Creation Road IV Science-Based – Industrial Park ROC Hsinchu, Taiwan		+886 (2) 27466601 x2206
AUSTRALIA LOGITECH Australia Computer Peripherals Pty Ltd.	Level 2, 633 Pittwater Road AUS Dee Why NSW 2099, Australia		+61 (02) 9804 6968 +61 (02) 9972 3561
CANADA Sales & Marketing Office	5025 Orbitor Dr., Bldg. 6, Suite 200 CDN Mississauga, ON L4W 4Y5	(800) 231-7717	+1 702 269 3457
JAPAN LOGICOOL Co. Ltd.	Ryoshin Ginza East Mirror Bldg., 7F 3-15-10 Ginza Chuo-ku, Tokyo, Japan 104-0061		+81 (3) 3543 2122 FAX +81 (3) 3543 2911
In LATIN AMERICA AND THE CARIBBEAN	Contact your local authorized distributor, or call our Customer Support Hotline in the USA		+1 702 269 3457



**[www.logitech.com](http://www.logitech.com)**

©2006 Logitech. All rights reserved. Logitech, the Logitech logo, and other Logitech marks are owned by Logitech and may be registered. All other trademarks are the property of their respective owners.

The Bluetooth® word mark and logos are owned by the Bluetooth SIG, Inc. and any use of such marks by Logitech is under license. Other trademarks and trade names are those of their respective owners.