

EXHIBIT 9A: EXTERNAL PHOTOGRAPHS

SECTION 2.1033 (c) (12)

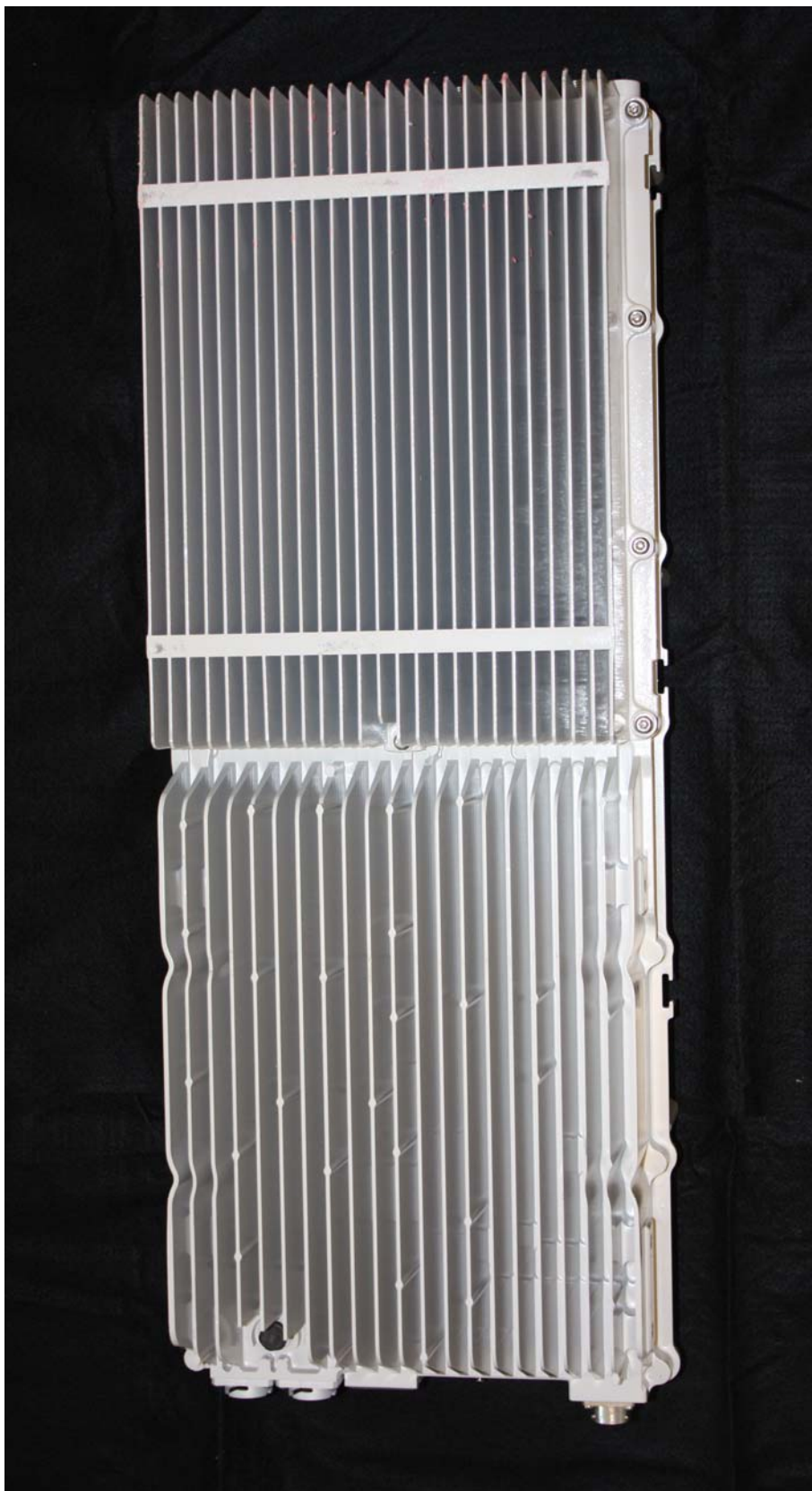
Photographs (8"x10") of the equipment of sufficient clarity to reveal equipment construction and layout, including meters, if any, and labels for controls and meters and sufficient views of the internal construction to define component placement and chassis assembly. Insofar as these requirements are met by photographs or drawings contained in the instruction manuals supplied with the product certification request, additional photographs are necessary only to complete the required showing.

Response:

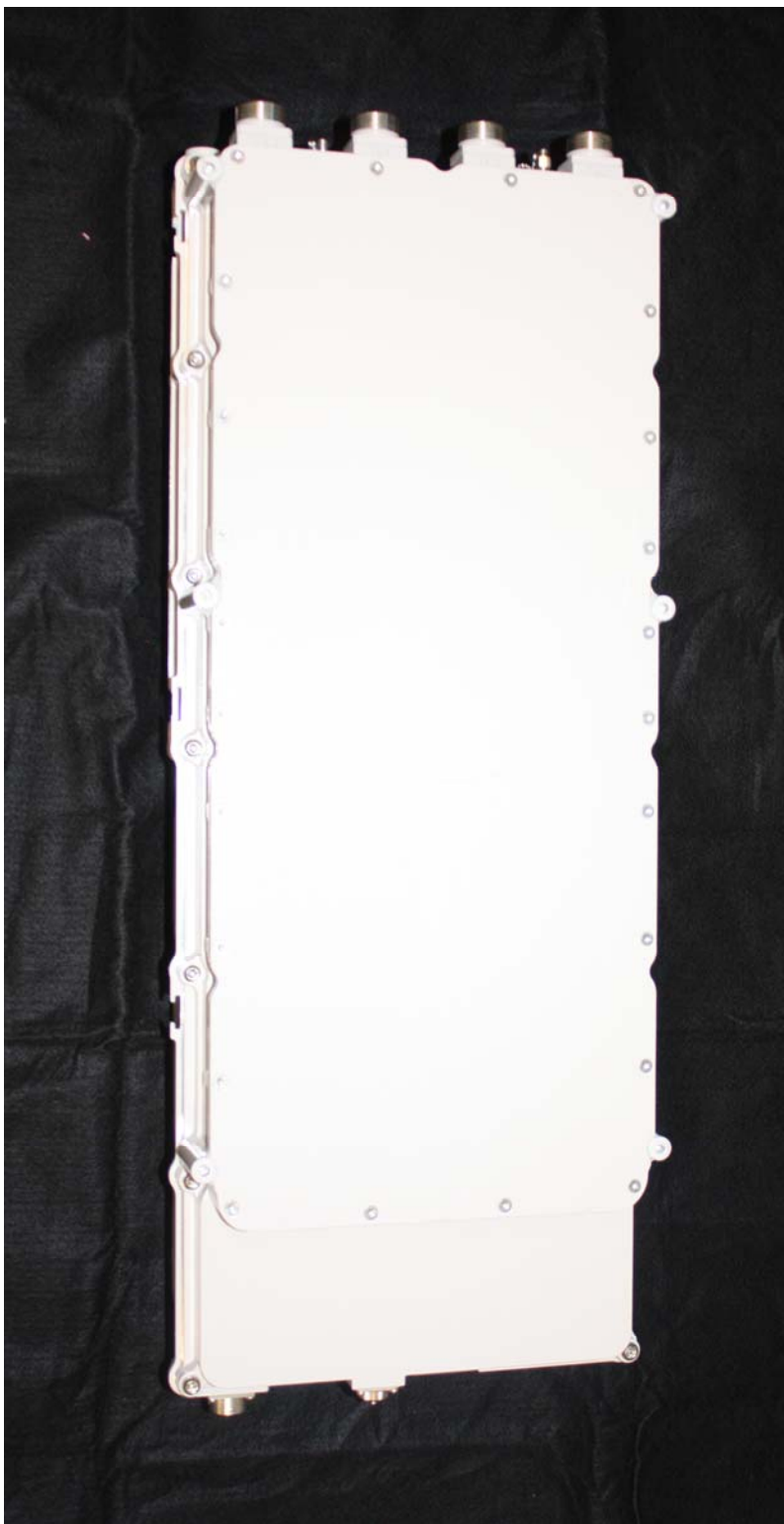
The external photographs of the **Alcatel-Lucent's Alcatel-Lucent Remote Radio Head 4x25-B30 Transceiver System FCC ID: AS5BBTRX-19** as installed.

Alcatel-Lucent Remote Radio Head 4x25-B30 Transceiver System FCC ID: AS5BBTRX-19

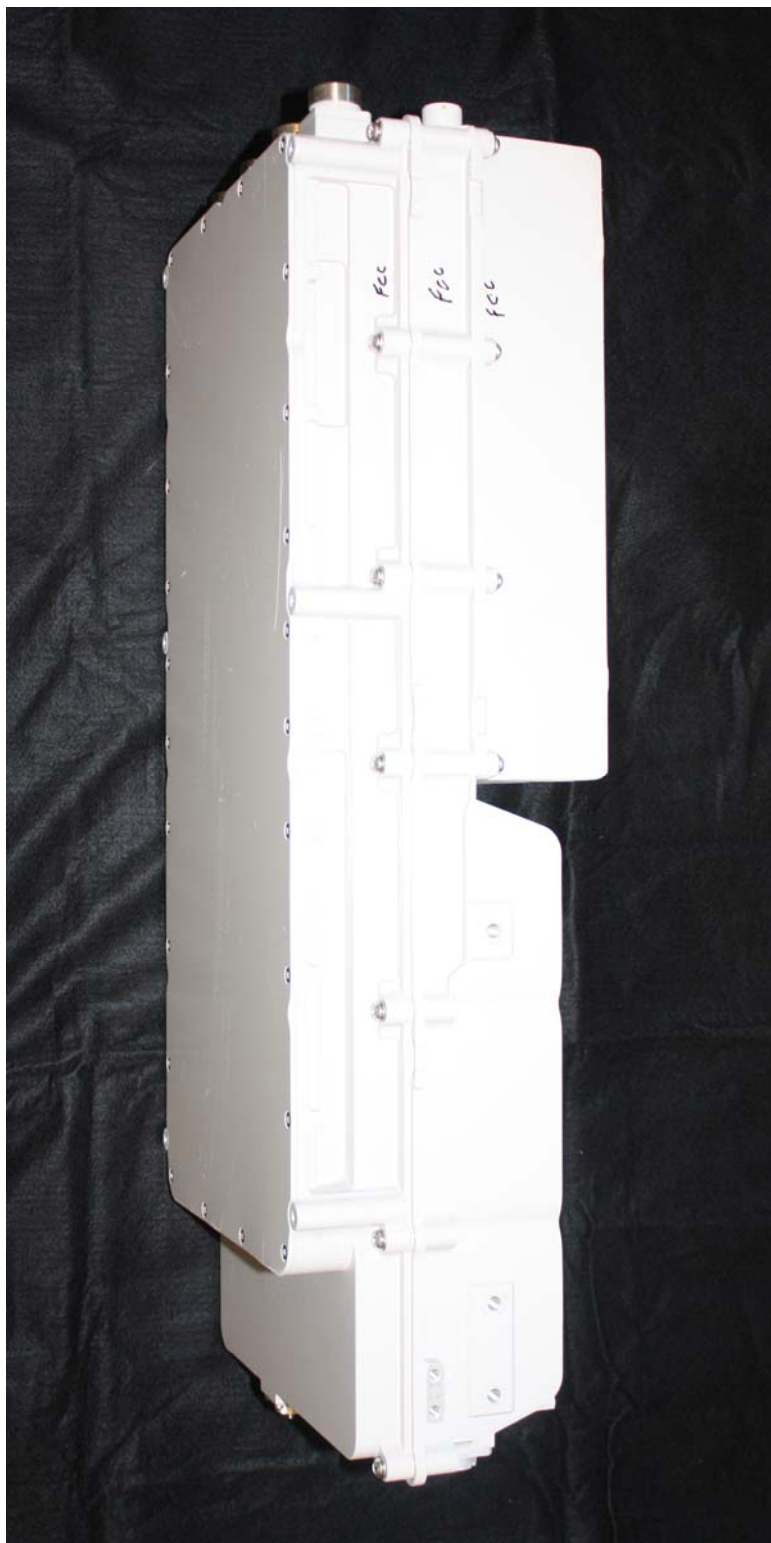
Rear View



Front View



Right Side



Left Side



Top View



Bottom View

