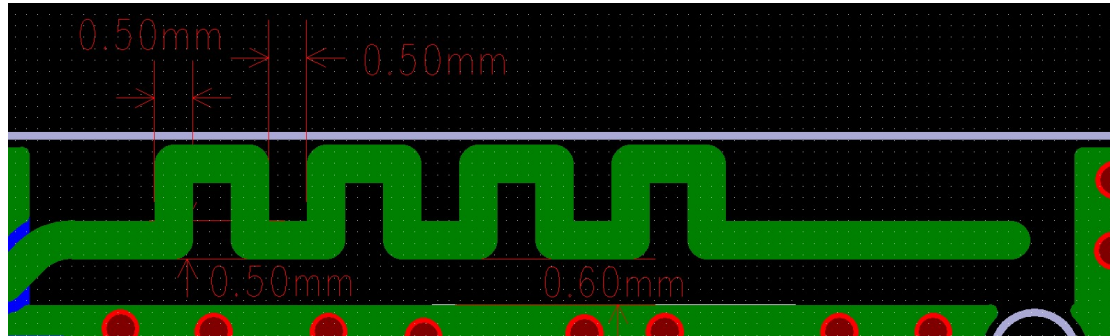


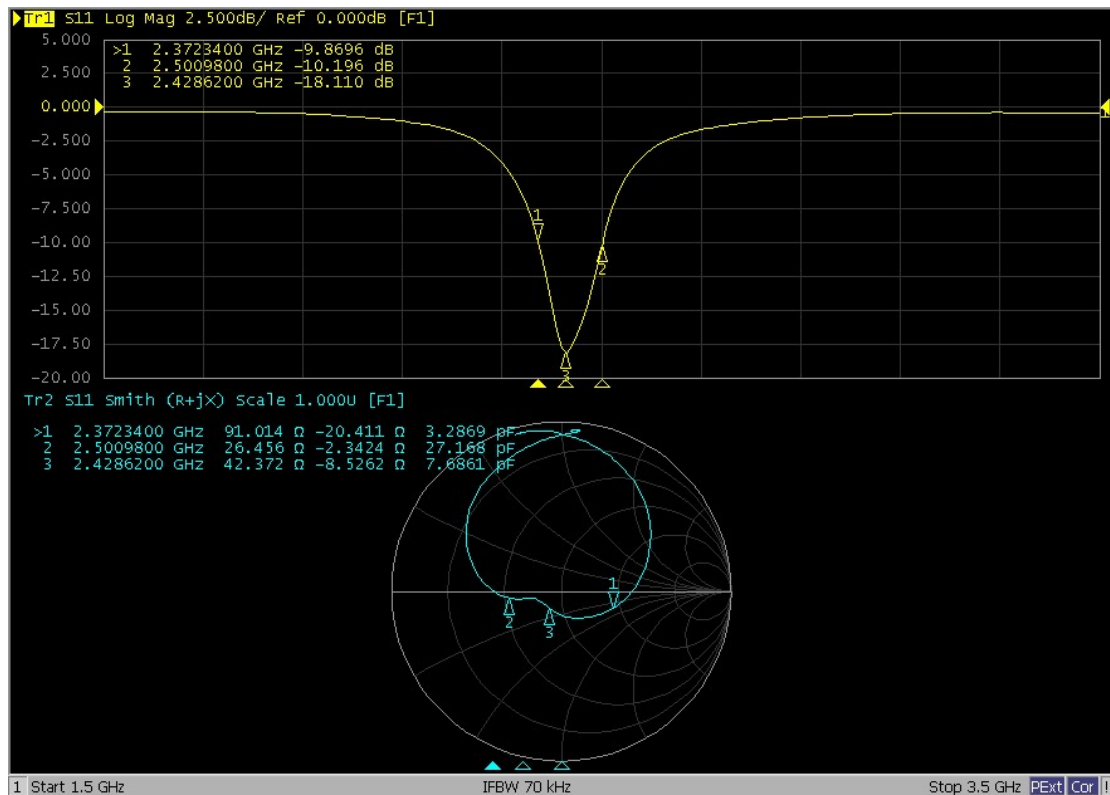
- S001 Bluetooth antenna design specification:

Antenna dimensions as blew picture show: the material is FR4 and the thickness is 0.8mm of PCB.



1-1 S001 PIFA Antenna

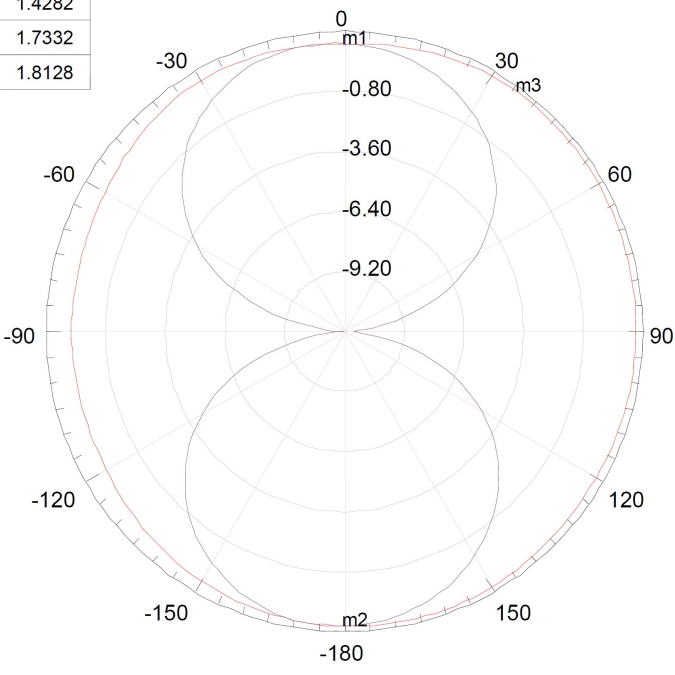
The performance of S11 as blew show and the working frequency band cover 2.4G ISM.



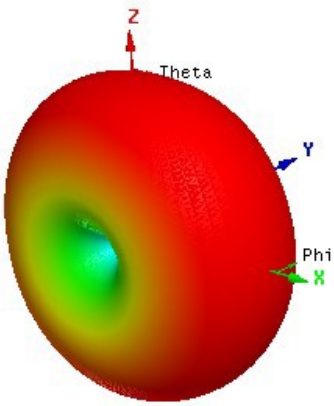
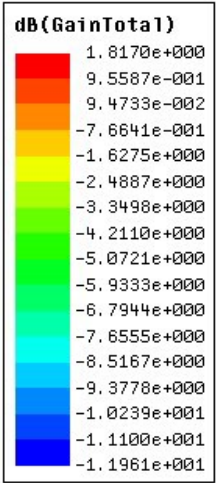
1-2 Nano Dongle PIFA S11 performance

The gain of this antenna 2D and 3D as blew show and the maximum gain is about 1.5dB.

Name	Theta	Ang	Mag
m1	0.0000	0.0000	1.4282
m2	180.0000	180.0000	1.7332
m3	36.0000	36.0000	1.8128



Curve Info
— dB(GainTotal)
Setup1 : Sweep1
Phi='0deg'
— dB(GainTotal)
Setup1 : Sweep1
Phi='90.0000000000002deg'



1-3 S001 PIFA gain