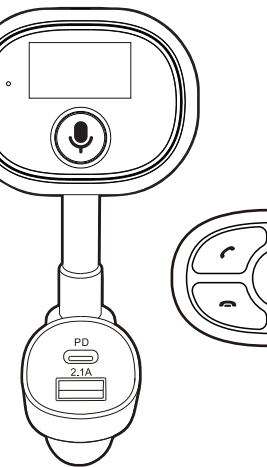




USER GUIDE

Bluetooth FM Transmitter Voice Assistant



Model #100130570_EN_03/29/2023

Contents & Information

CONTENTS & INFORMATION

Features

OVERVIEW

CONTROLS

OPERATION

Setup

Select Source (Bluetooth, Aux input)

Voice Assistant

Hands-free Calls

SPECIFICATIONS

LEGAL

WARRANTY

SAFETY PRECAUTIONS

TROUBLESHOOTING

Features

Push voice button to wake up voice assistant (Smart Device)

-Native Voice App

Hands-free calling with built-in microphone

Bluetooth connection to mobile device (A2DP)

8 RGB light modes

-Red / green / blue light always on

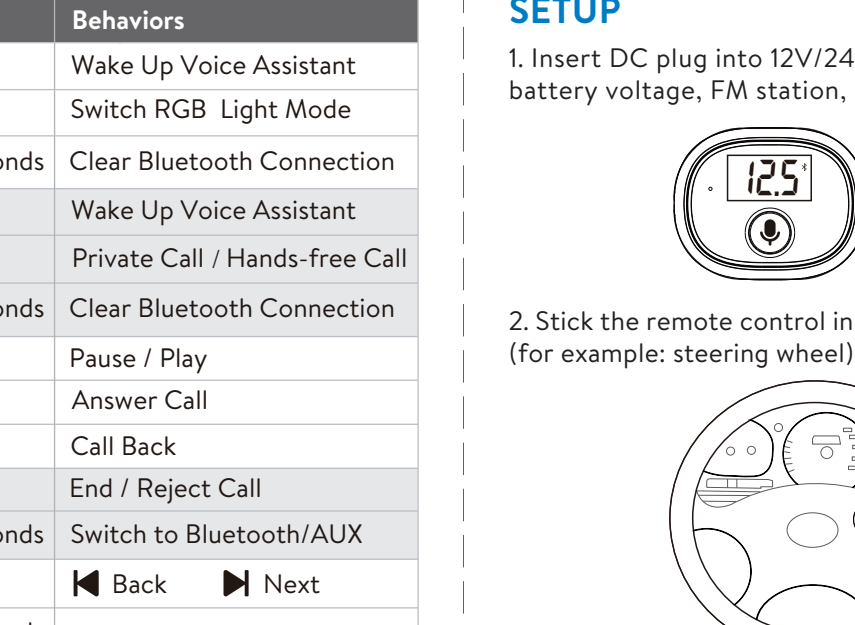
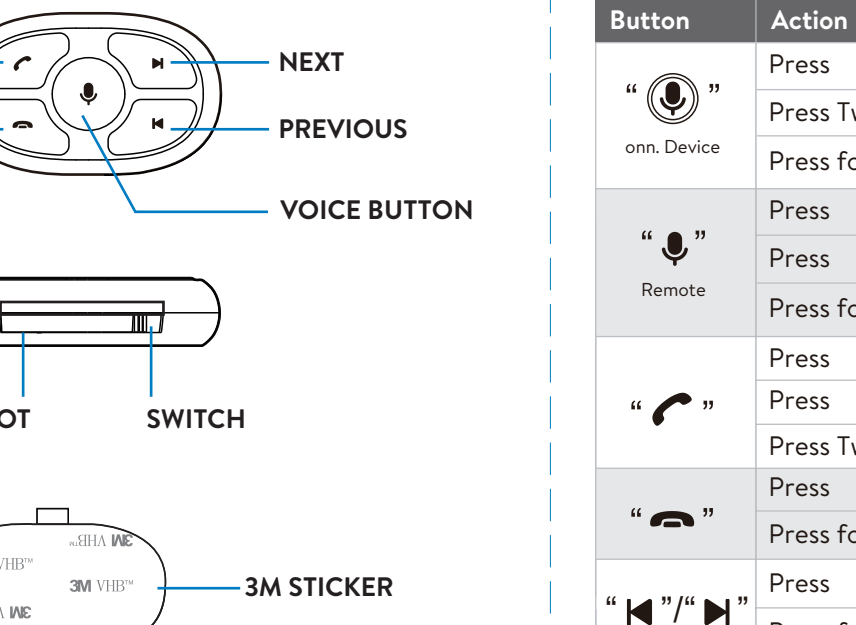
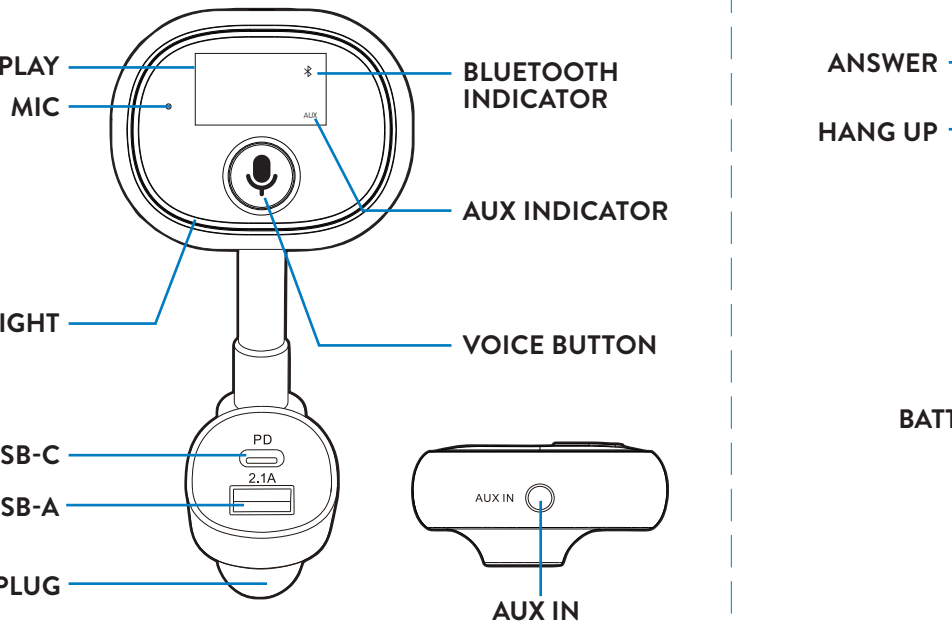
-Red / green / blue breathing light

-Turn off / all color cycles

30W charging (USB-C and USB-A)

Remote Control

Overview



Controls

Button

Action

Behaviors

“ onn. Device”

Press

Press Twice

Press for 5 Seconds

“ Remote”

Press

Press

Press for 5 Seconds

“ ”

Press

Press Twice

“ ”

Press

Press for 2 Seconds

Wake Up Voice Assistant

Switch RGB Light Mode

Clear Bluetooth Connection

Wake Up Voice Assistant

Private Call / Hands-free Call

Clear Bluetooth Connection

Pause / Play

Answer Call

Call Back

End / Reject Call

Switch to Bluetooth/AUX

Back

Next

Enter FM Station Setting

Wake Up Voice Assistant

Switch RGB Light Mode

Clear Bluetooth Connection

Wake Up Voice Assistant

Private Call / Hands-free Call

Clear Bluetooth Connection

Pause / Play

Answer Call

Call Back

End / Reject Call

Switch to Bluetooth/AUX

Back

Next

Enter FM Station Setting

Wake Up Voice Assistant

Switch RGB Light Mode

Clear Bluetooth Connection

Wake Up Voice Assistant

Private Call / Hands-free Call

Clear Bluetooth Connection

Pause / Play

Answer Call

Call Back

End / Reject Call

Switch to Bluetooth/AUX

Back

Next

Enter FM Station Setting

Wake Up Voice Assistant

Switch RGB Light Mode

Clear Bluetooth Connection

Wake Up Voice Assistant

Private Call / Hands-free Call

Clear Bluetooth Connection

Pause / Play

Answer Call

Call Back

End / Reject Call

Switch to Bluetooth/AUX

Back

Next

Enter FM Station Setting

Wake Up Voice Assistant

Switch RGB Light Mode

Clear Bluetooth Connection

Wake Up Voice Assistant

Private Call / Hands-free Call

Clear Bluetooth Connection

Pause / Play

Answer Call

Call Back

End / Reject Call

Switch to Bluetooth/AUX

Back

Next

Enter FM Station Setting

Wake Up Voice Assistant

Switch RGB Light Mode

Clear Bluetooth Connection

Wake Up Voice Assistant

Private Call / Hands-free Call

Clear Bluetooth Connection

Pause / Play

Answer Call

Call Back

End / Reject Call

Switch to Bluetooth/AUX

Back

Next

Enter FM Station Setting

Wake Up Voice Assistant

Switch RGB Light Mode

Clear Bluetooth Connection

Wake Up Voice Assistant

Private Call / Hands-free Call

Clear Bluetooth Connection

Pause / Play

Answer Call

Call Back

End / Reject Call

Switch to Bluetooth/AUX

Back

Next

Enter FM Station Setting

Wake Up Voice Assistant

Switch RGB Light Mode

Clear Bluetooth Connection

Wake Up Voice Assistant

Private Call / Hands-free Call

Clear Bluetooth Connection

Pause / Play

Answer Call

Call Back

End / Reject Call

Switch to Bluetooth/AUX

Back

Next

Enter FM Station Setting

Wake Up Voice Assistant

Switch RGB Light Mode

Clear Bluetooth Connection

Wake Up Voice Assistant

Private Call / Hands-free Call

Clear Bluetooth Connection

Pause / Play

Answer Call

Call Back

End / Reject Call

Switch to Bluetooth/AUX

Back

Next

Enter FM Station Setting

Wake Up Voice Assistant

Switch RGB Light Mode

Clear Bluetooth Connection

Wake Up Voice Assistant

Private Call / Hands-free Call

Clear Bluetooth Connection

Pause / Play

Answer Call

Call Back

End / Reject Call

Switch to Bluetooth/AUX

Back

Next

Enter FM Station Setting

Wake Up Voice Assistant

Switch RGB Light Mode

Clear Bluetooth Connection

Wake Up Voice Assistant

Private Call / Hands-free Call

Clear Bluetooth Connection

Pause / Play

Answer Call

Call Back

End / Reject Call

Switch to Bluetooth/AUX

Back

Next

Enter FM Station Setting

Wake Up Voice Assistant

Switch RGB Light Mode

Clear Bluetooth Connection

Wake Up Voice Assistant

Private Call / Hands-free Call

Clear Bluetooth Connection

Pause / Play

Answer Call

Call Back

End / Reject Call

Switch to Bluetooth/AUX

Back

Next

Enter FM Station Setting

Wake Up Voice Assistant

Switch RGB Light Mode

Clear Bluetooth Connection

Wake Up Voice Assistant

Private Call / Hands-free Call

Clear Bluetooth Connection

Pause / Play

Answer Call

Call Back

End / Reject Call

Switch to Bluetooth/AUX

Back

Next

Enter FM Station Setting

Wake Up Voice Assistant

Switch RGB Light Mode

Clear Bluetooth Connection

Wake Up Voice Assistant

Private Call / Hands-free Call

Clear Bluetooth Connection

Pause / Play

Answer Call

Call Back

End / Reject Call

Switch to Bluetooth/AUX

Back

Next

Enter FM Station Setting

Wake Up Voice Assistant

Switch RGB Light Mode

Clear Bluetooth Connection

Wake Up Voice Assistant

Private Call / Hands-free Call

Clear Bluetooth Connection

Pause / Play

Answer Call

Call Back

End / Reject Call

Switch to Bluetooth/AUX

Back

Next

Enter FM Station Setting

Wake Up Voice Assistant

Switch RGB Light Mode

Clear Bluetooth Connection

Wake Up Voice Assistant

Private Call / Hands-free Call

Clear Bluetooth Connection

Pause / Play

Answer Call

Call Back

End / Reject Call

Switch to Bluetooth/AUX

Back

Next

Enter FM Station Setting

Wake Up Voice Assistant

Switch RGB Light Mode

Clear Bluetooth Connection

Wake Up Voice Assistant

Private Call / Hands-free Call

Clear Bluetooth Connection

Pause / Play

Answer Call

Call Back

End / Reject Call

Switch to Bluetooth/AUX

Back

Next

Enter FM Station Setting

Wake Up Voice Assistant

Switch RGB Light Mode

Clear Bluetooth Connection

Wake Up Voice Assistant

Private Call / Hands-free Call

Clear Bluetooth Connection

Pause / Play

Answer Call

Call Back

End / Reject Call

Switch to Bluetooth/AUX

Back

Next

Enter FM Station Setting

Wake Up Voice Assistant

Switch RGB Light Mode

Clear Bluetooth Connection

Wake Up Voice Assistant

Private Call / Hands-free Call

Clear Bluetooth Connection

Pause / Play

Answer Call

Call Back

End / Reject Call

Switch to Bluetooth/AUX

Back

Next

Enter FM Station Setting

Wake Up Voice Assistant

Switch RGB Light Mode

Clear Bluetooth Connection

Wake Up Voice Assistant

Private Call / Hands-free Call

Clear Bluetooth Connection

Pause / Play

Answer Call

Call Back

End / Reject Call

Switch to Bluetooth/AUX

Back

Next

Enter FM Station Setting

Wake Up Voice Assistant

Switch RGB Light Mode

VOICE ASSISTANTS

DOWNLOAD AND SET UP THE NATIVE VOICE APP



Use the QR Code provided to download and setup Native Voice on your smartphone and add Voice Assistants to your ONN device. Works for both iOS and Android.

CONNECT NATIVE VOICE APP WITH ONN. DEVICE

Follow instructions to connect your onn. device to the Native Voice App.

NOTE: Voice Assistants available over Bluetooth, not AUX.



ENABLE ONE OR MORE VOICE ASSISTANTS

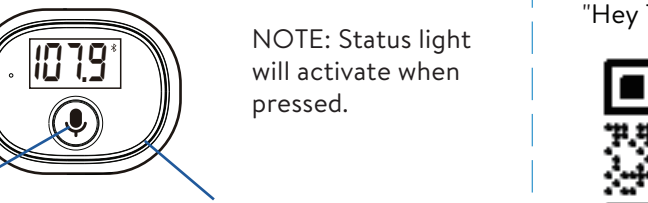
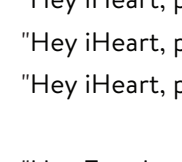
Toggle on Voice Assistants including your smartphone assistant like Siri or Google Assistant.

NOTE: No additional app downloads required.



TRY A VOICE ASSISTANT

- Press " " on your onn. device
- Hear a tone
- Say "Hey iHeart, play Taylor Swift".
- Wait for response



VOICE BUTTON

STATUS LIGHT

NOTE: Status light will activate when pressed.

EXAMPLE VOICE COMMANDS

- "Hey iHeart, play z100"
- "Hey iHeart, play Harry Styles"
- "Hey iHeart, play Country music"

- "Hey TuneIn, play WDRV"
- "Hey TuneIn, listen to the Yankees game"
- "Hey TuneIn, turn on Bloomberg Radio"



Visit the QR code above for more info and troubleshooting.

HANDS-FREE CALLS

Status displayed
Press

- " " to answer call
- " " to end or reject call
- " " 2x to redial last number



Incoming Call Talking End the Call

Note: May also use the Bluetooth connected device to disconnect the call.



Example

Specifications

DC Input

12V-24V DC 5A

USB-A Output

5V/2.1A

USB-C Output

5V/3A 9V/2.22A

Bluetooth Version

V5.2

Audio Frequency

20H~20KHz

Stand-by Current

50mA(Max)

Bluetooth Working Frequency

2.402~2.480GHz

Bluetooth Effective Distance

32ft

FM Emission

Effective Distance

6ft

RF Output

1.352dBm

FM Frequency

88.1MHz-107.9MHz

Legal

STATEMENT

FCC Compliance Statement

This device complies with Part 15 of the FCC Rules. Operation is subject to the following two conditions: (1) this device may not cause harmful interference, and (2) this device must accept any interference received, including interference that may cause undesired operation.

Warning: Changes or modifications not expressly approved by the party responsible for compliance could void the user's authority to operate the equipment.

This equipment has been tested and found to comply with the limits for a Class B digital device, pursuant to Part 15 of the FCC Rules. These limits are designed to provide reasonable protection against harmful interference in a residential installation. This equipment generates, uses and can radiate radio frequency energy and, if not installed and used in accordance with the instructions, may cause harmful interference to radio communications. However, there is no guarantee that interference will not occur in a particular installation.

If this equipment does cause harmful interference to radio or television reception, which can be determined by turning the equipment off and on, the user is encouraged to try to correct the interference by one or more of the following measures:

- Reorient or relocate the receiving antenna.
- Increase the separation between the equipment and receiver.

Safety Precautions

CAUTION

Do not disassemble

Warning Spray

Keep Dry

Warning Flammable

No harsh cleaning chemicals. Clean with dry soft cloth.

Important: Use "Voice commands" when possible while driving.

WARNING

WARNING: Cancer and Reproductive Harm - www.P65Warnings.ca.gov

Warranty

1 YEAR LIMITED WARRANTY

COVERING DEFECTIVE PARTS

The Warranty Period lasts for 1 year (365 days) from the date you purchased the Product. Your purchase date is printed on the receipt you received with the Product.

This limited warranty applies only to hardware components of the Device that are not subject to accident, misuse, neglect, fire or damage from other external causes, alteration, repair, or commercial use.

Troubleshooting

Issue

Poor sound quality

The selected FM station is the same as a broadcast FM station

Change to another FM station

No audio transmitted

Incorrect FM station selected

Adjust the device FM station to match the vehicle FM station

The car stereo is very noisy in radio mode

High volume level selected on the car stereo

Turn up the volume of Bluetooth connected device and turn down the volume of the car stereo to reduce noise