

Part 15 Antenna Information

Description:

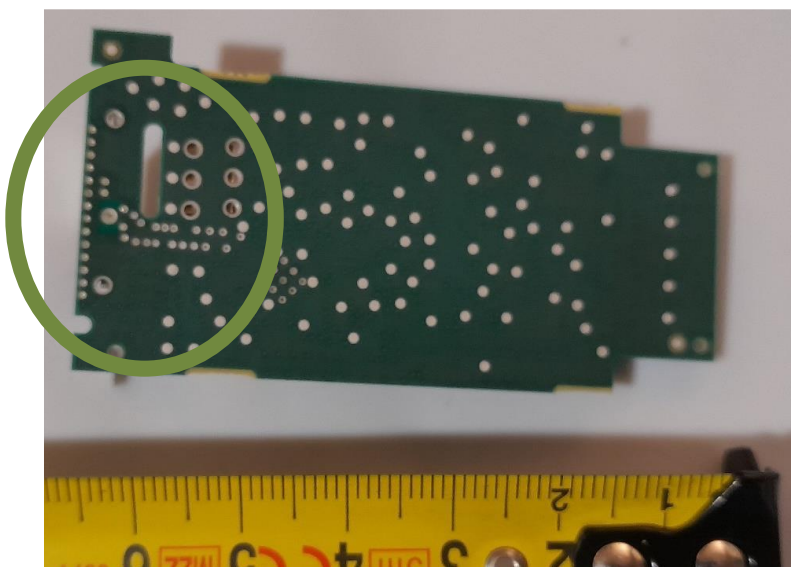
The device uses an inverted-F antenna (IFA) in sheet metal technology which is fed by a coplanar waveguide.

Photograph of the assembled antenna and coplanar waveguide feed line:



Ruler dimensions are in centimeter.

Bottom view of the PCB:



Measured gain:

Maximum Gain derived from EIRP and conducted measurement:		Maximum Gain (dBi)		
Test condition		2402 MHz	2440 MHz	2480 MHz
T _{nom} 23 °C	V _{nom} (3)V	-0,02	0,95	1,49

Details are given in the test report exhibit.