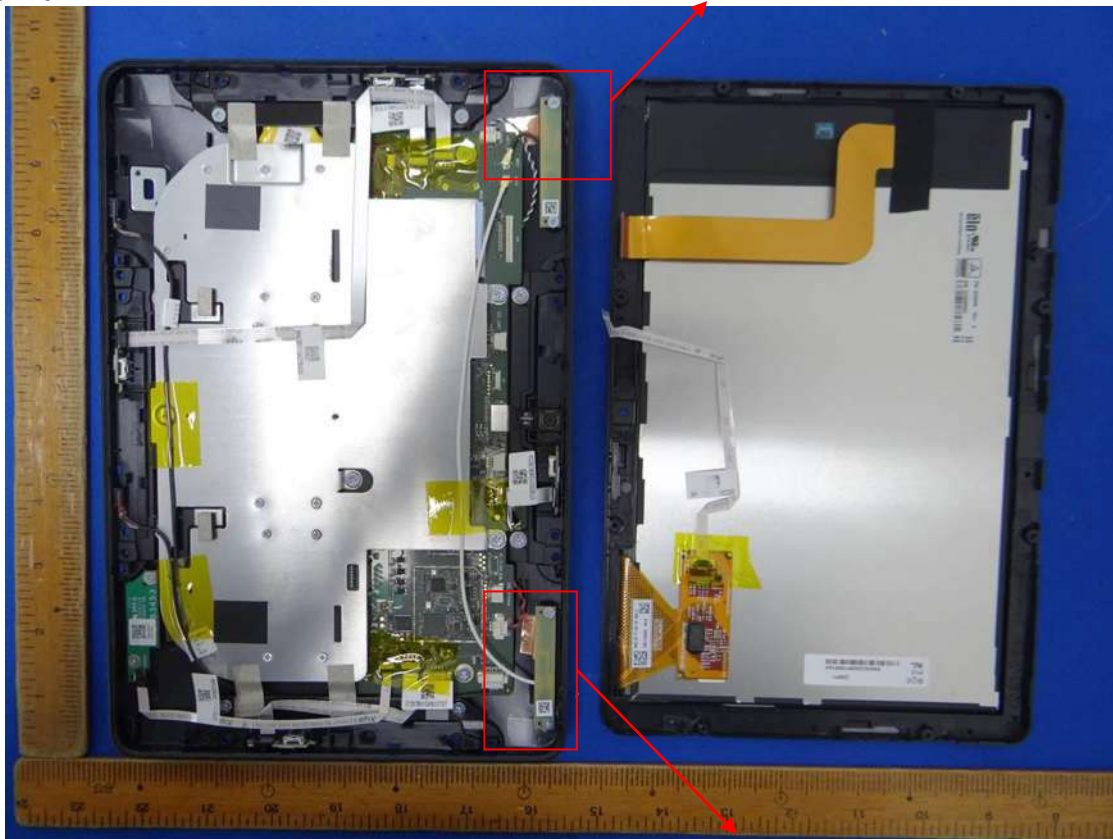


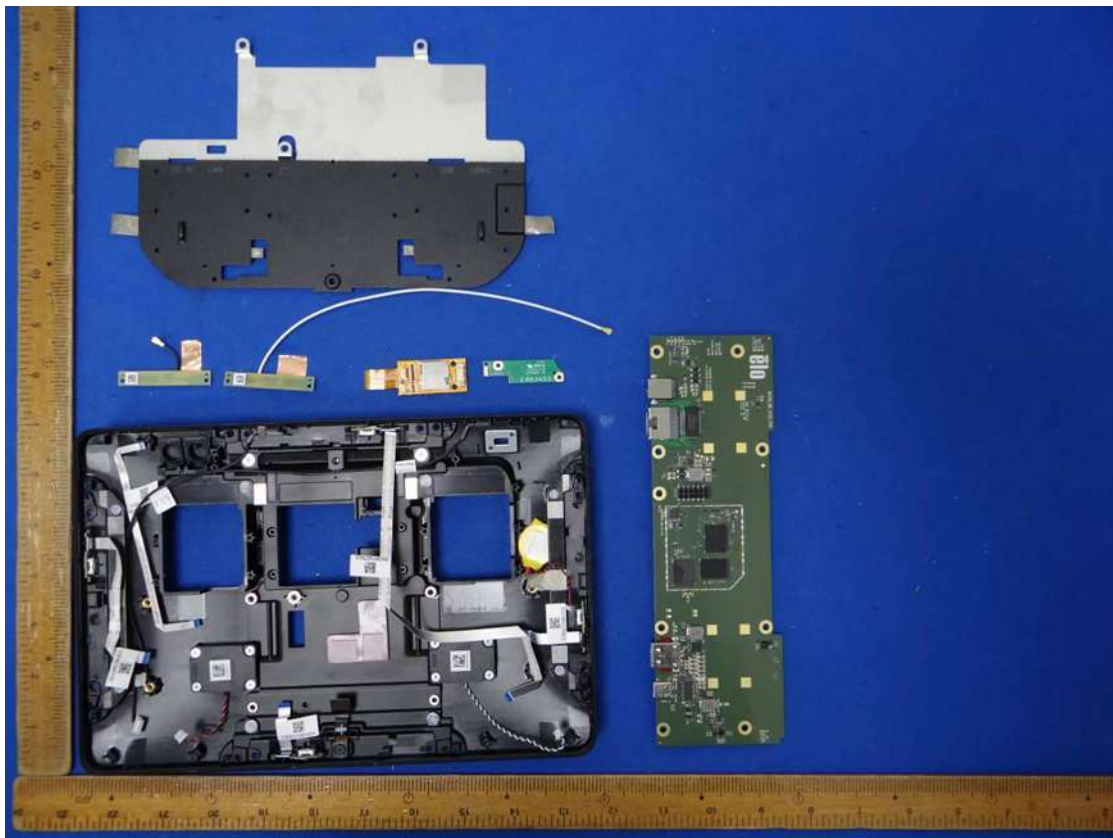


For ESY1011E

Ant B position (For WLAN)



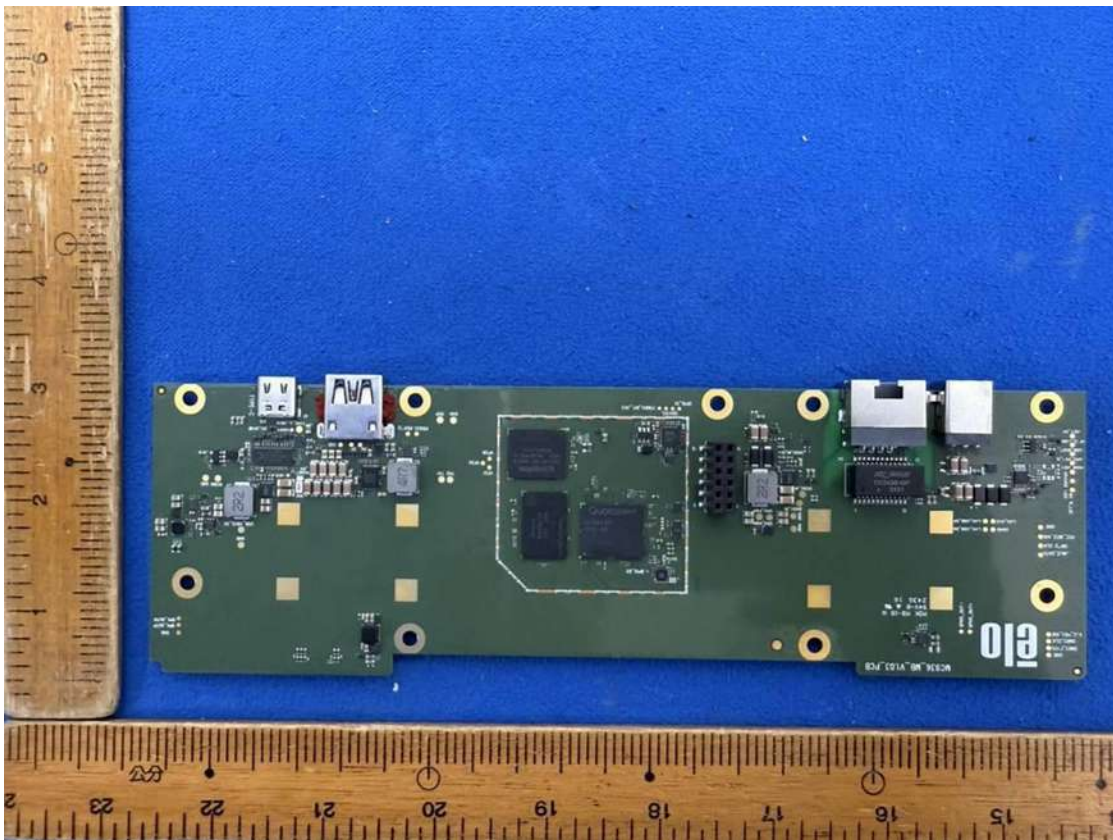
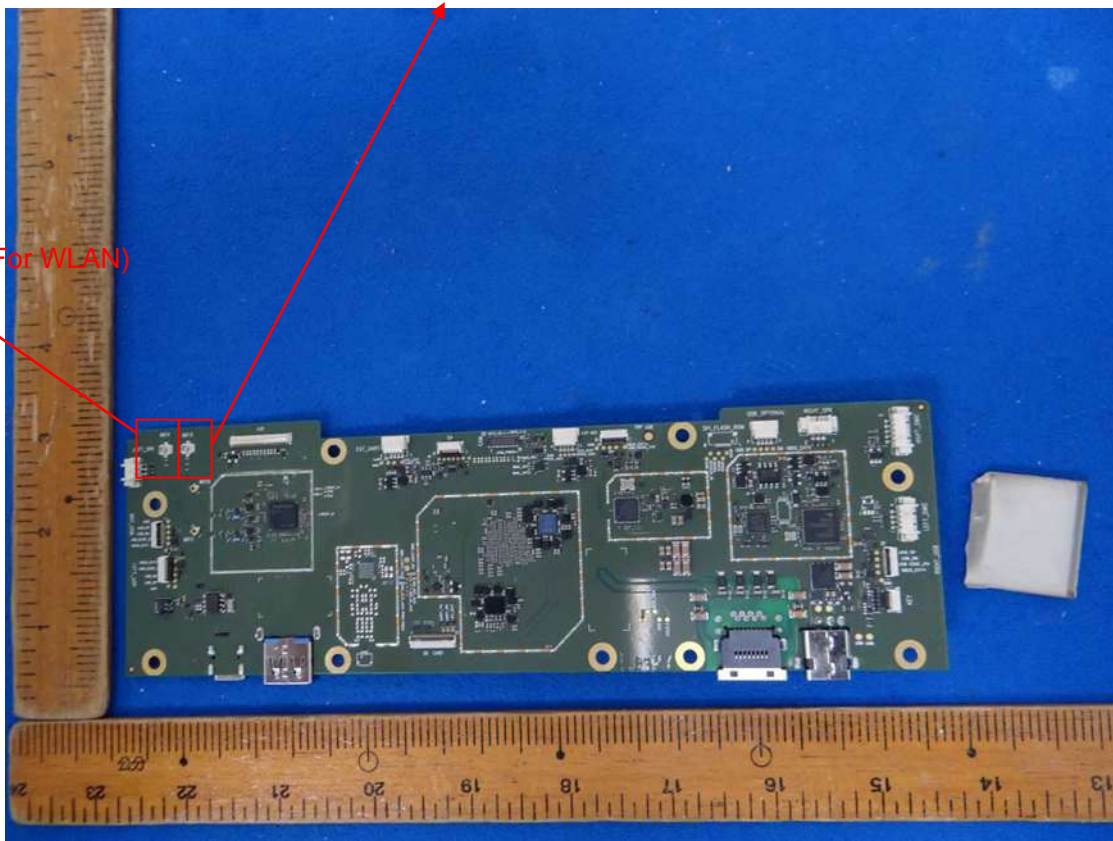
Ant A position (For BT/WLAN)





Ant A Connect (For BT/WLAN)

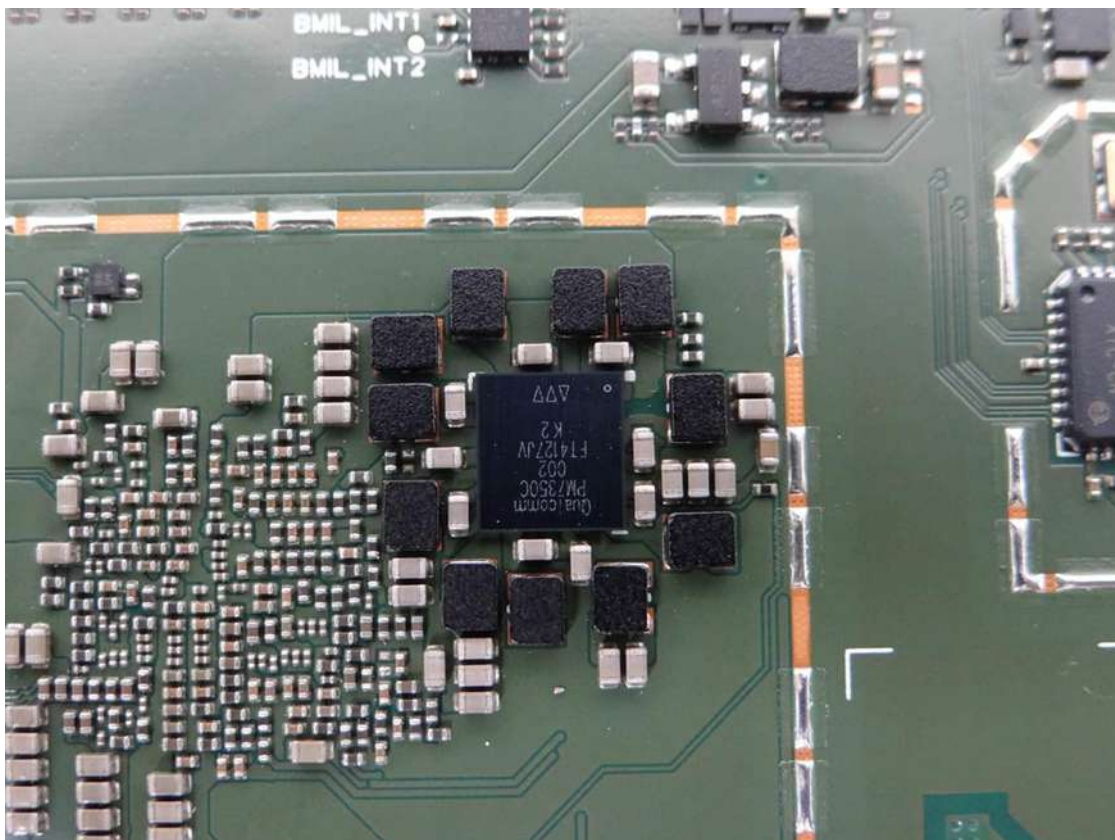
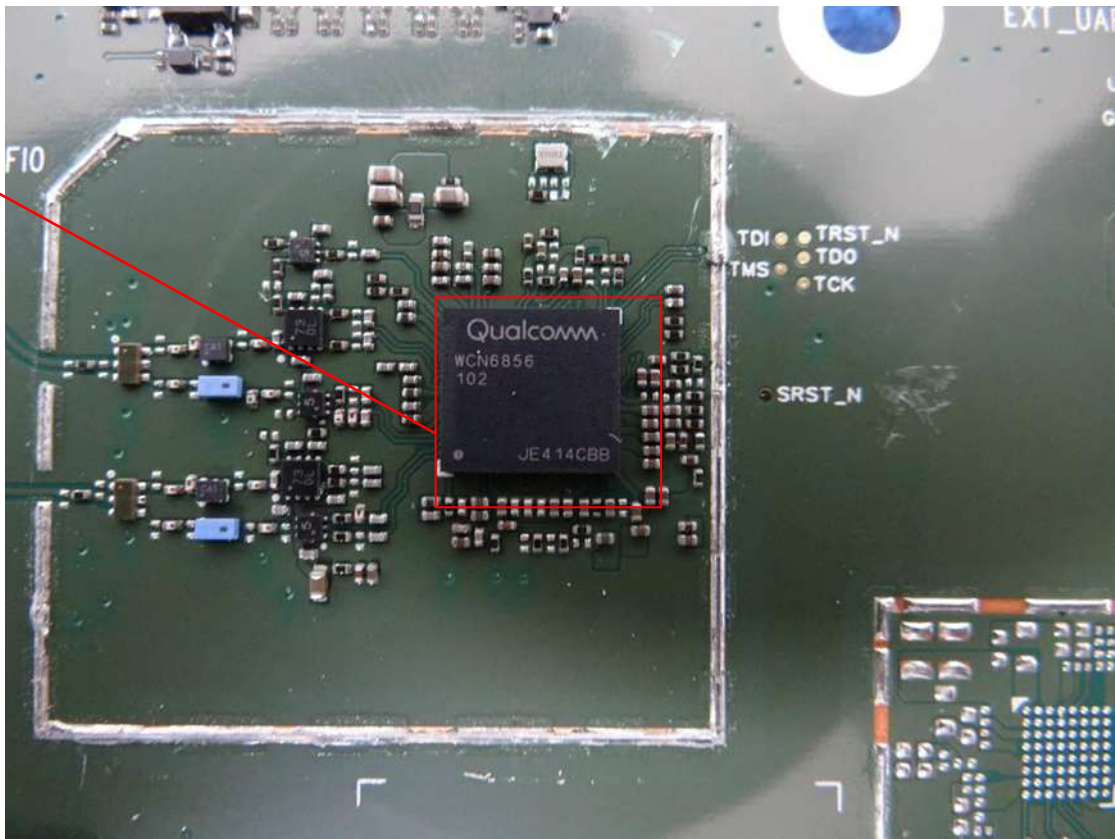
Ant B Connect (For WLAN)

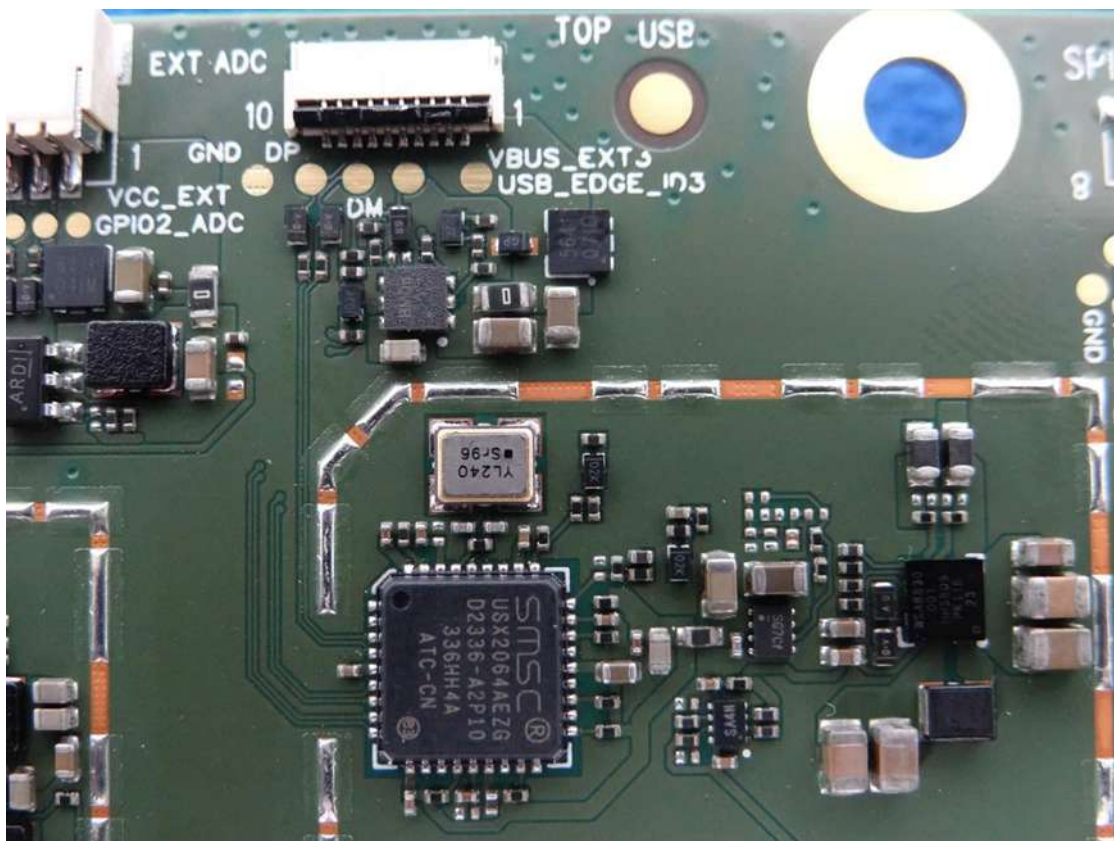
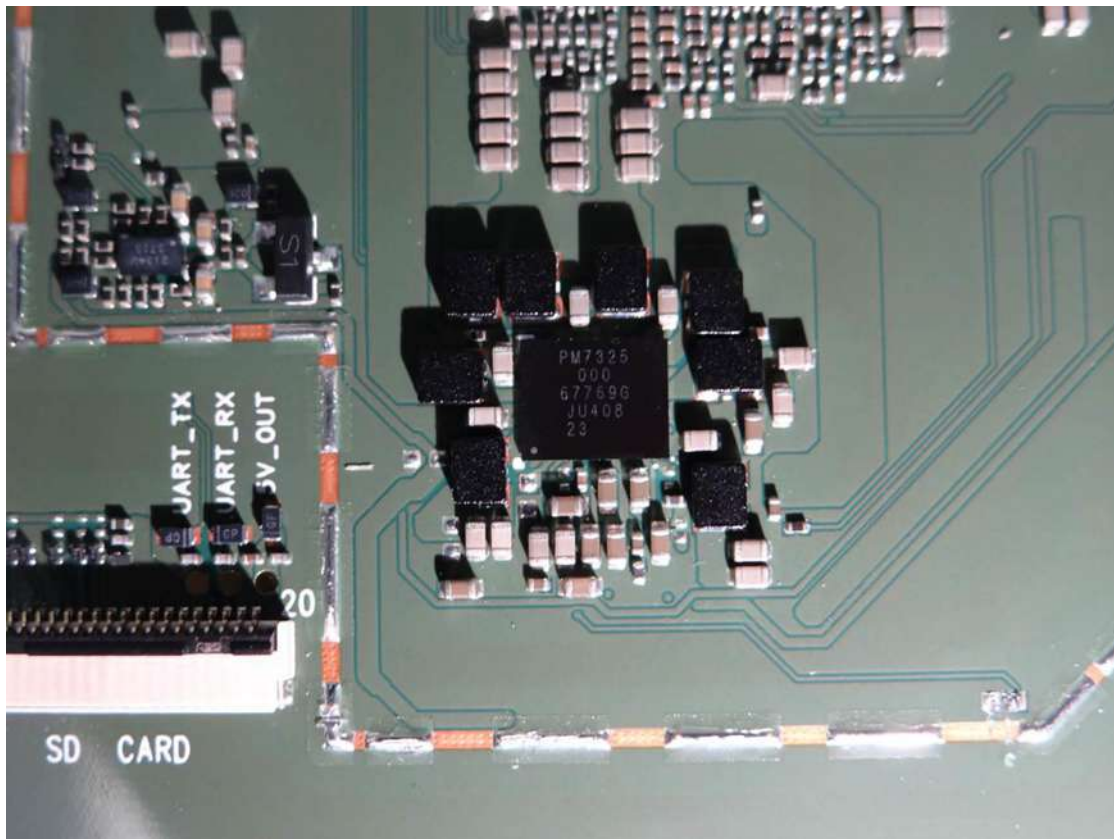




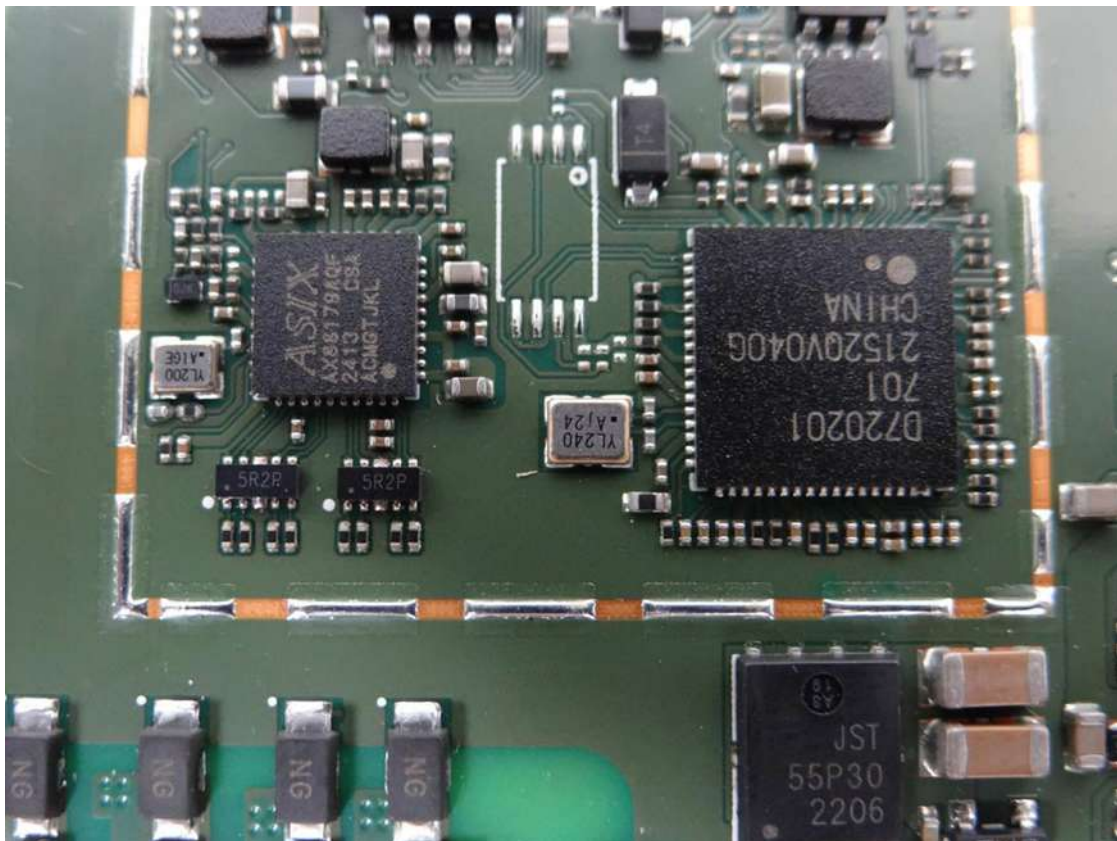
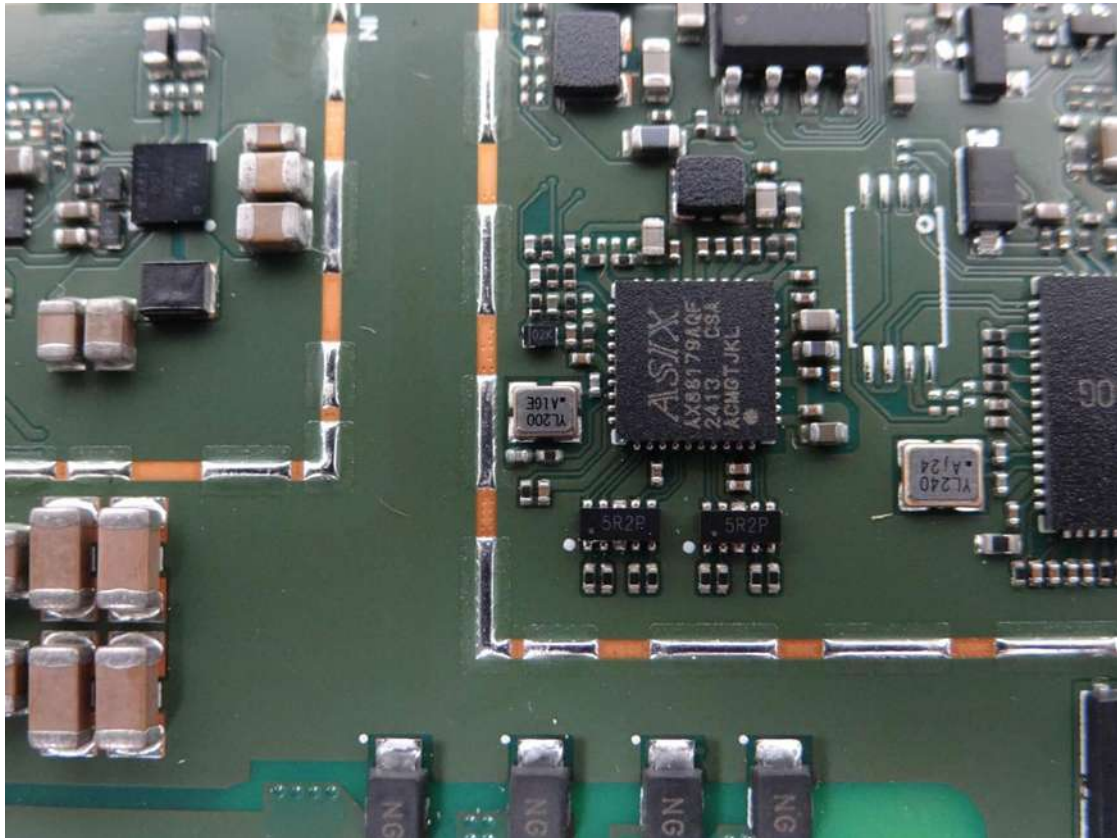


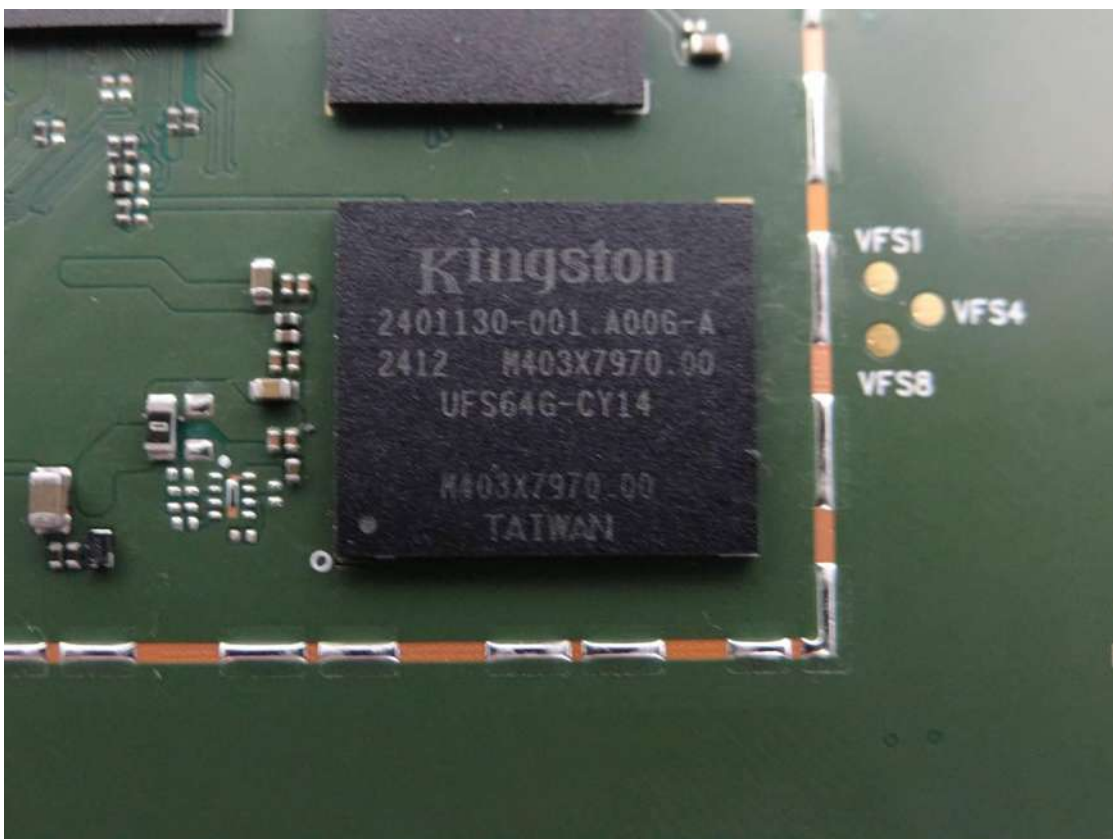
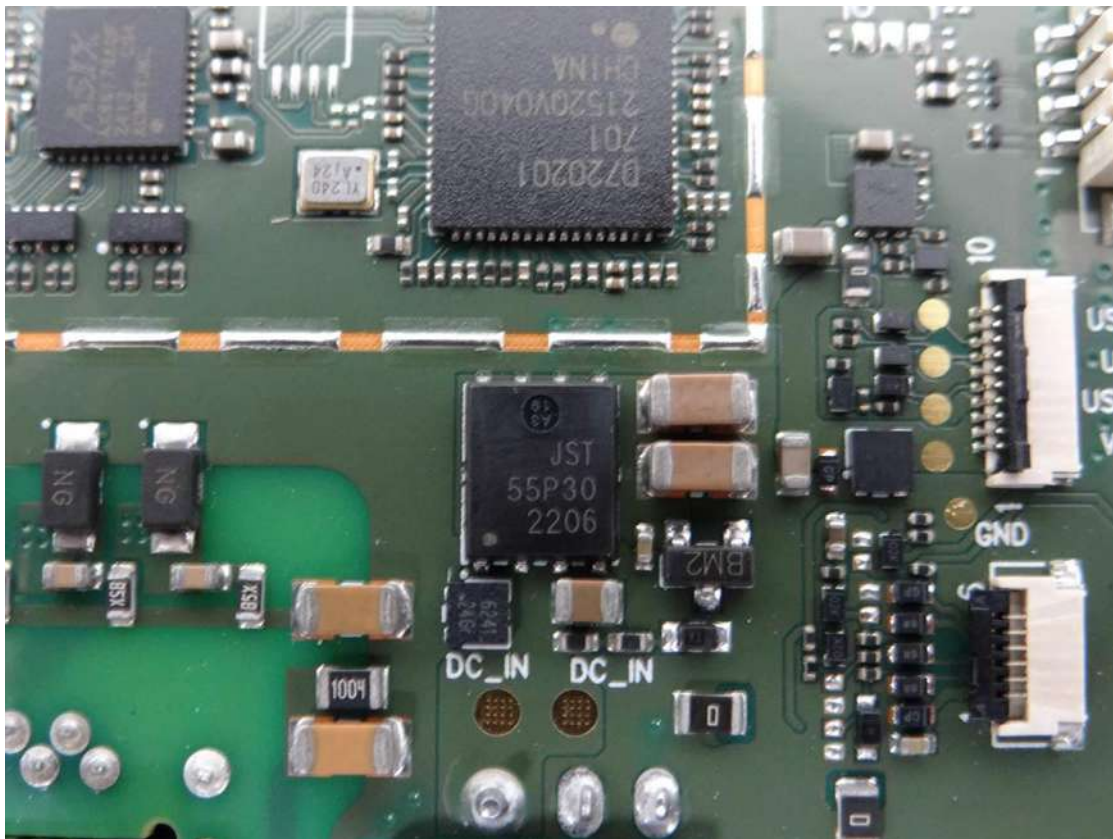
RF Chip



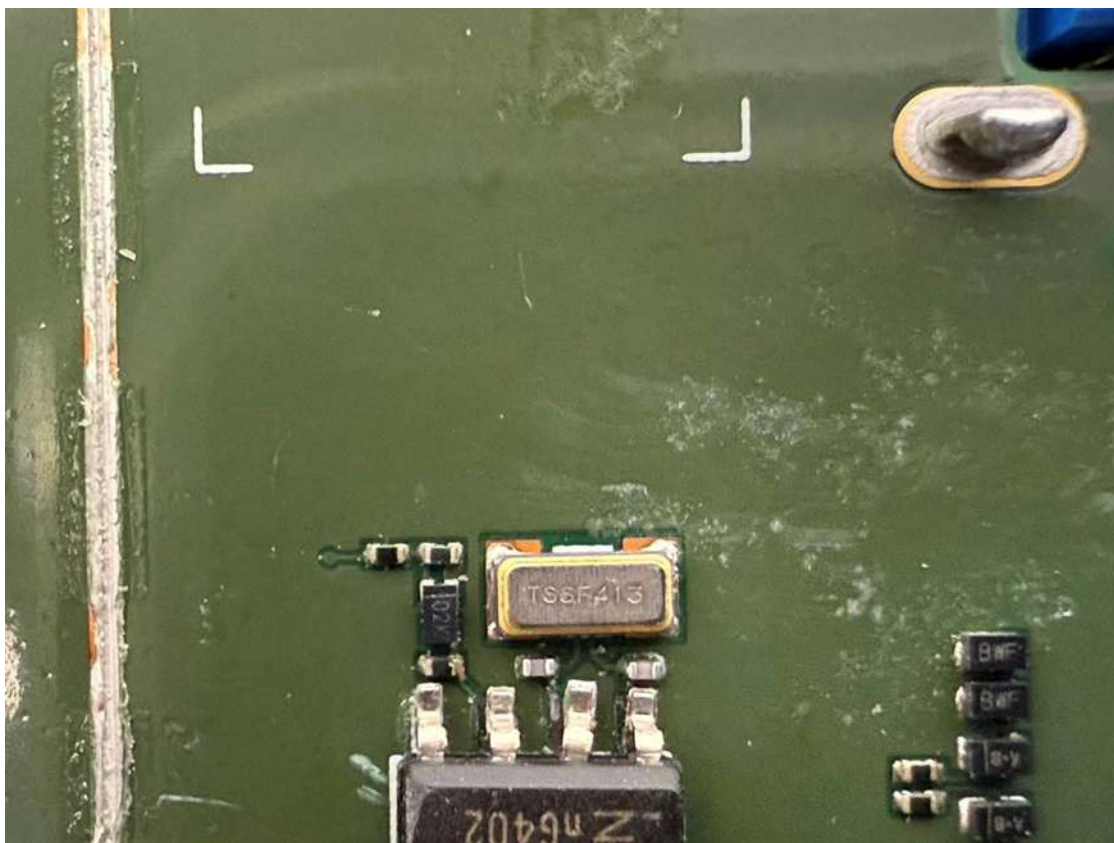
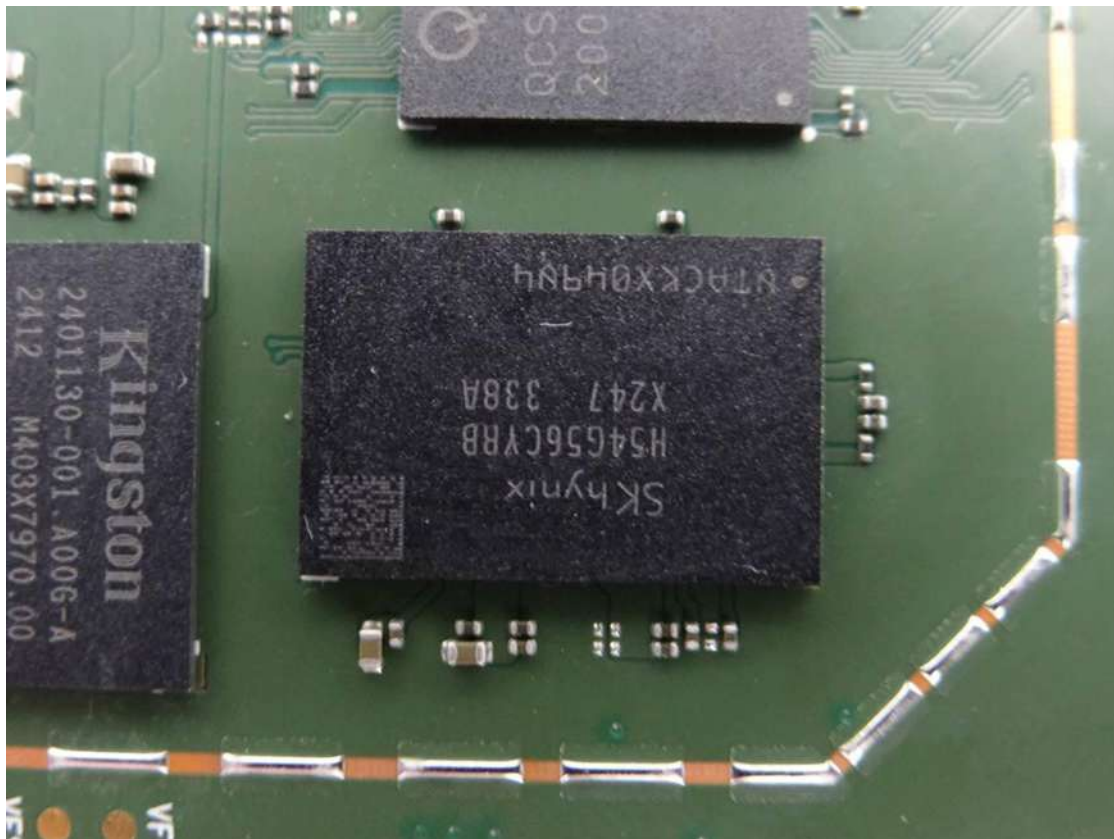




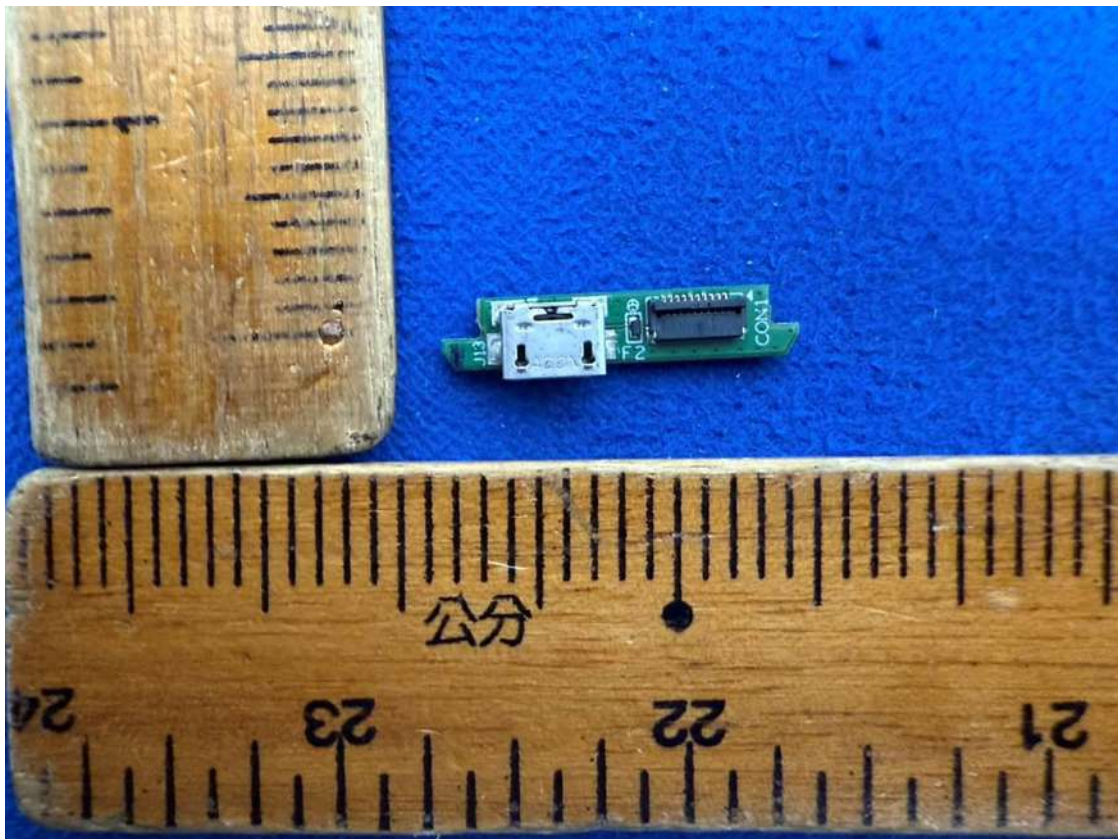
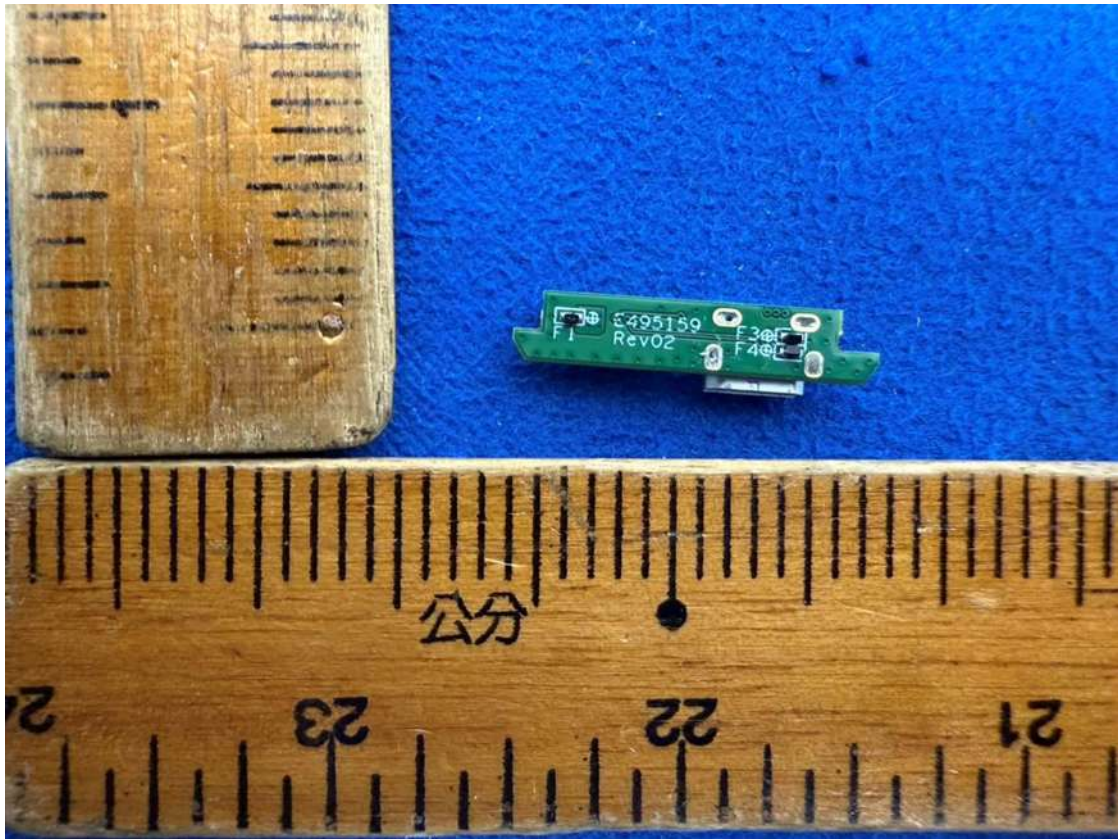




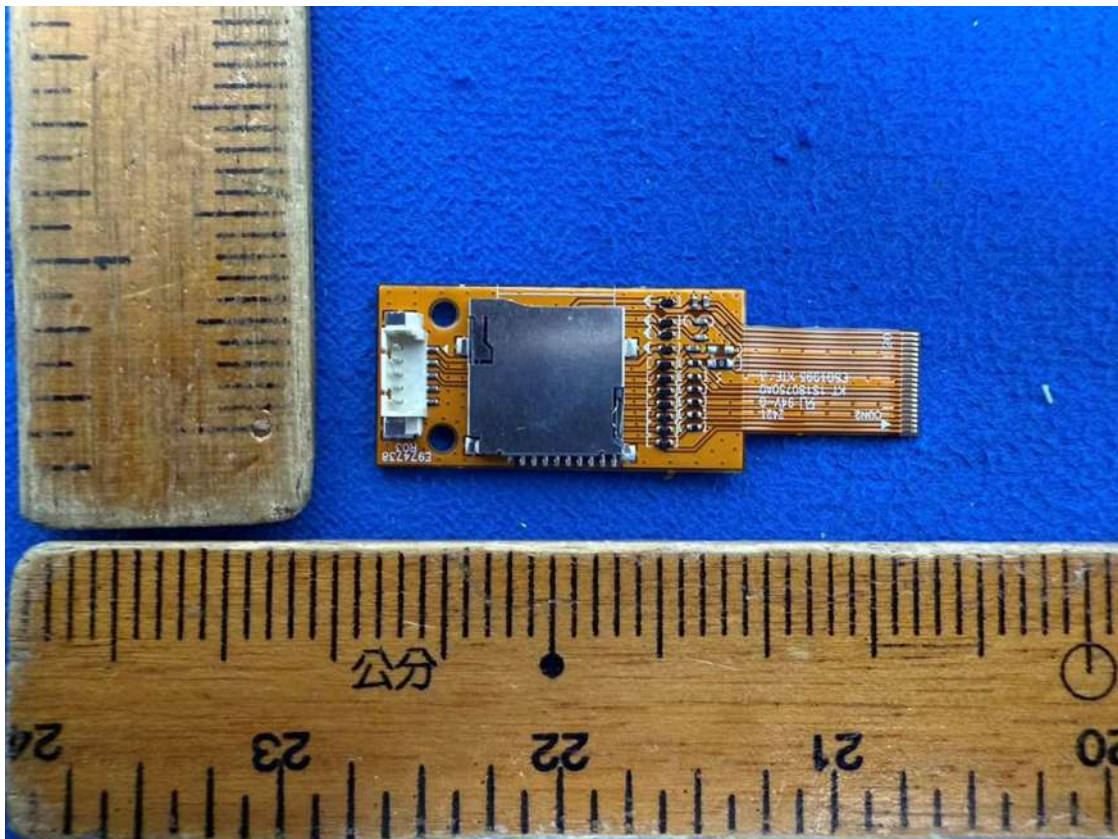
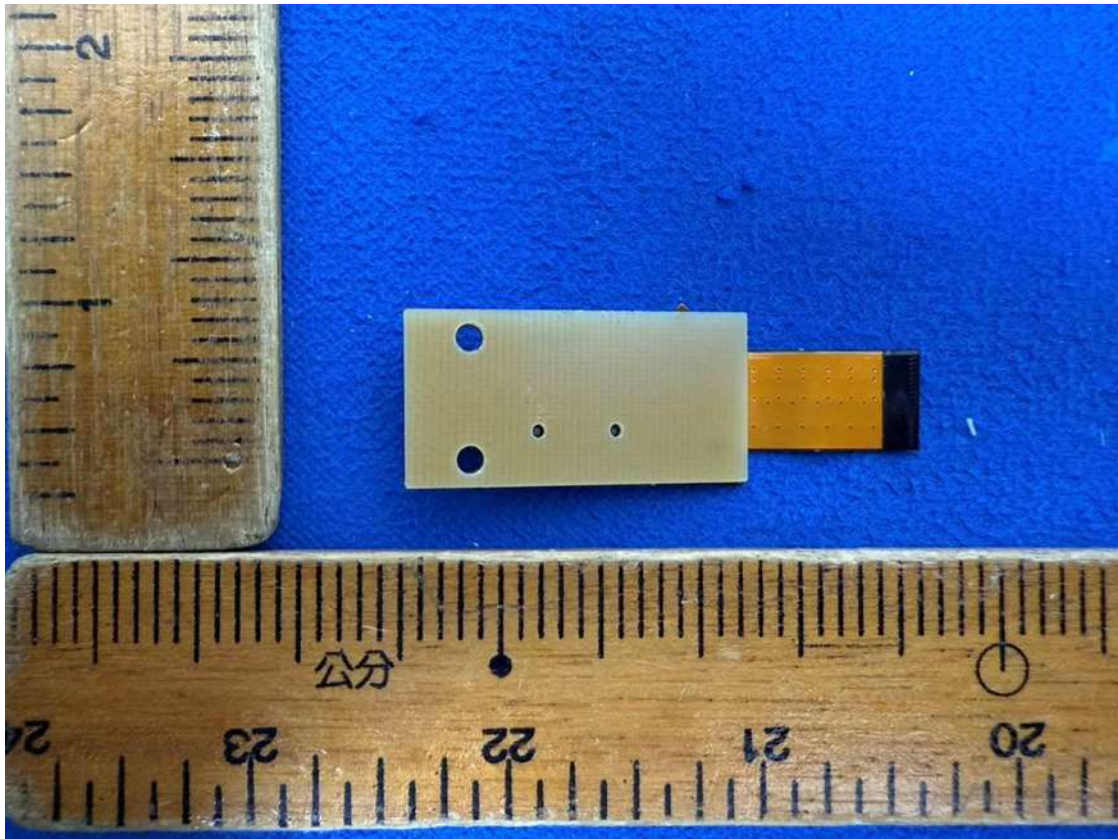




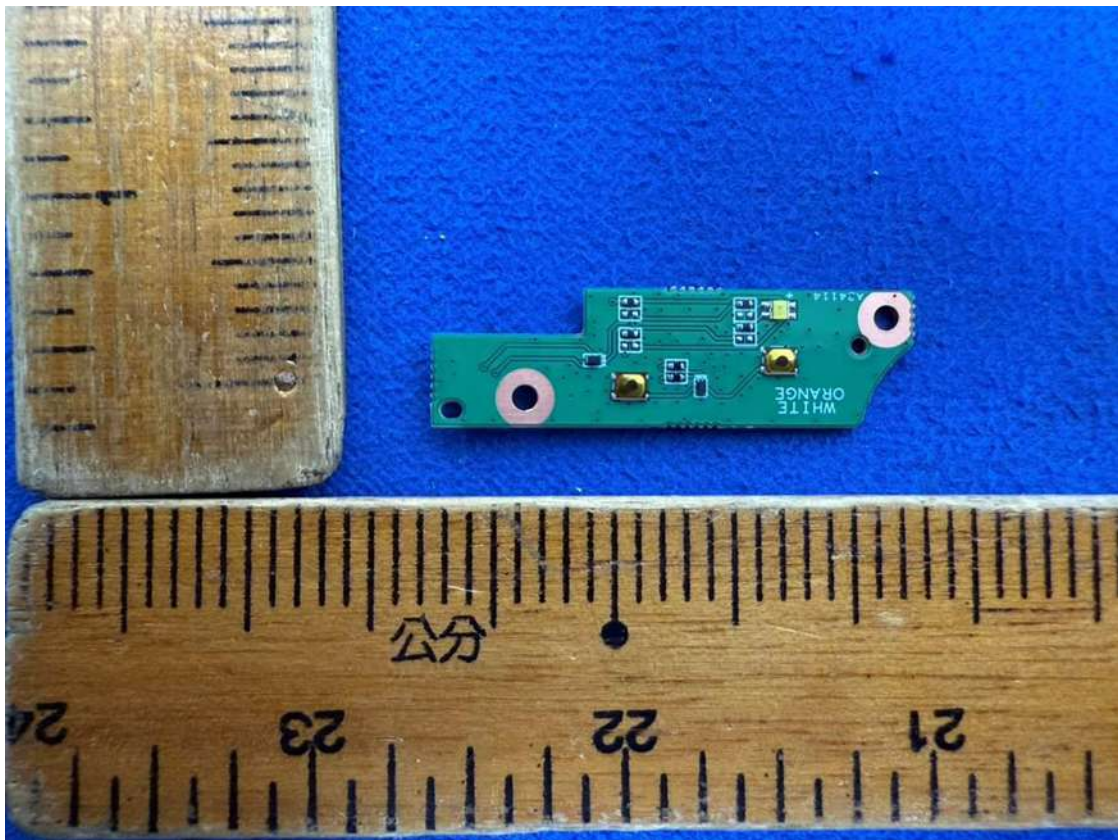
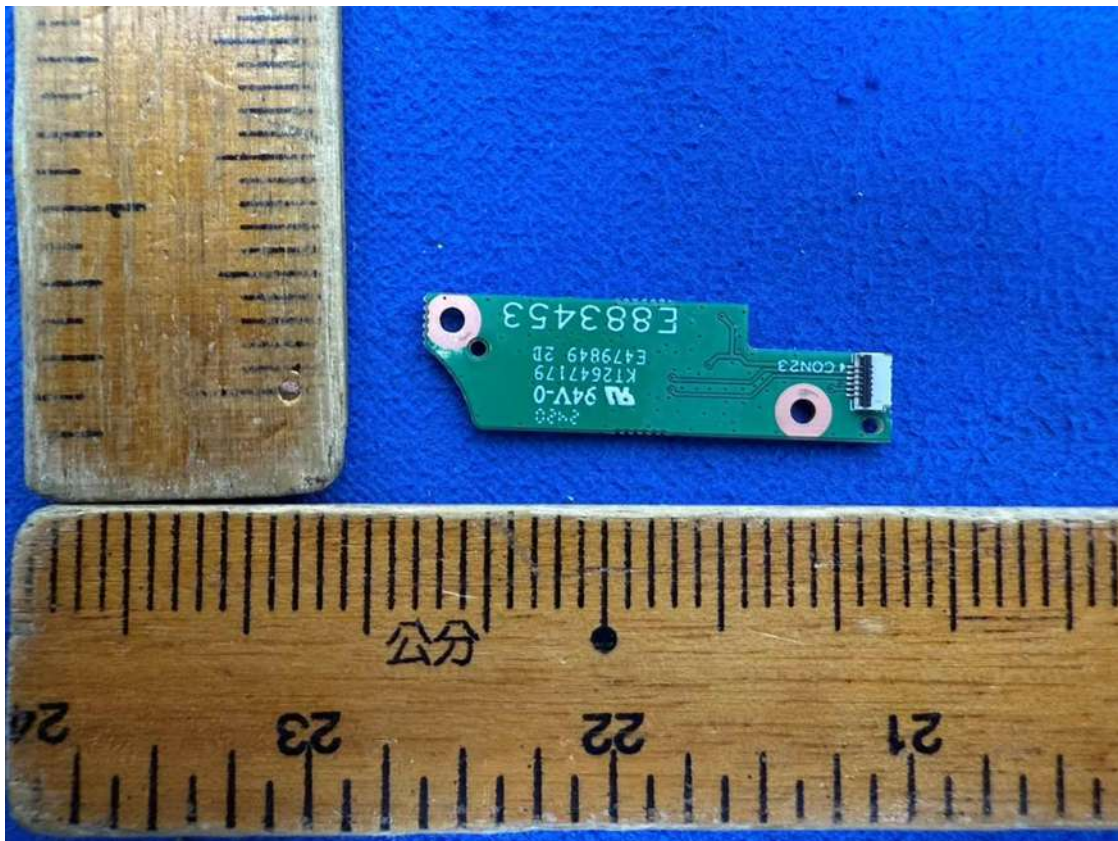




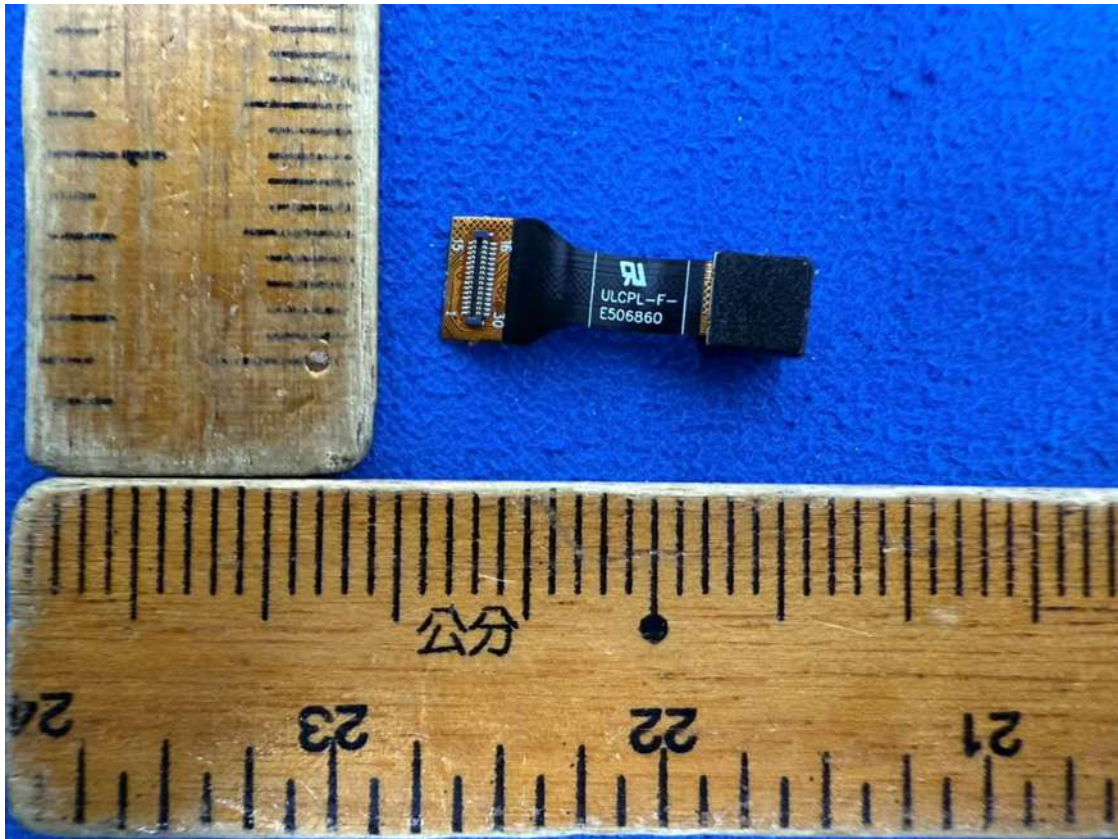








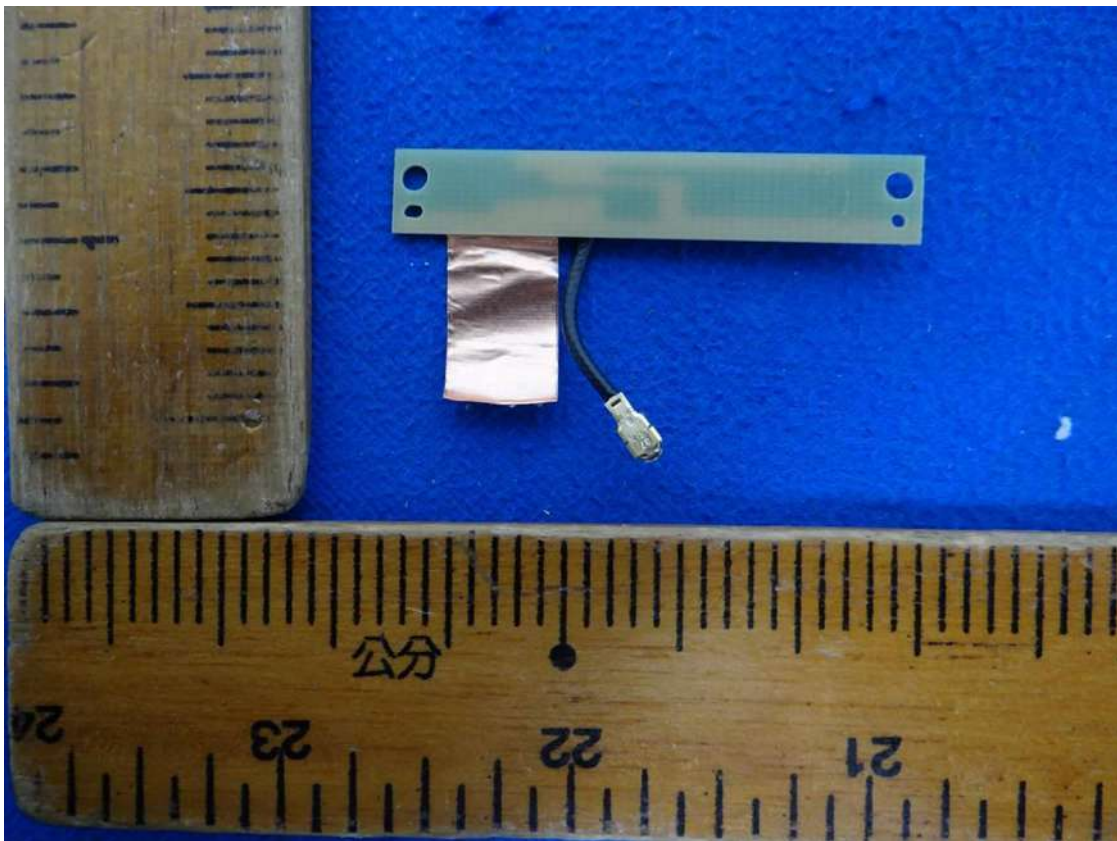
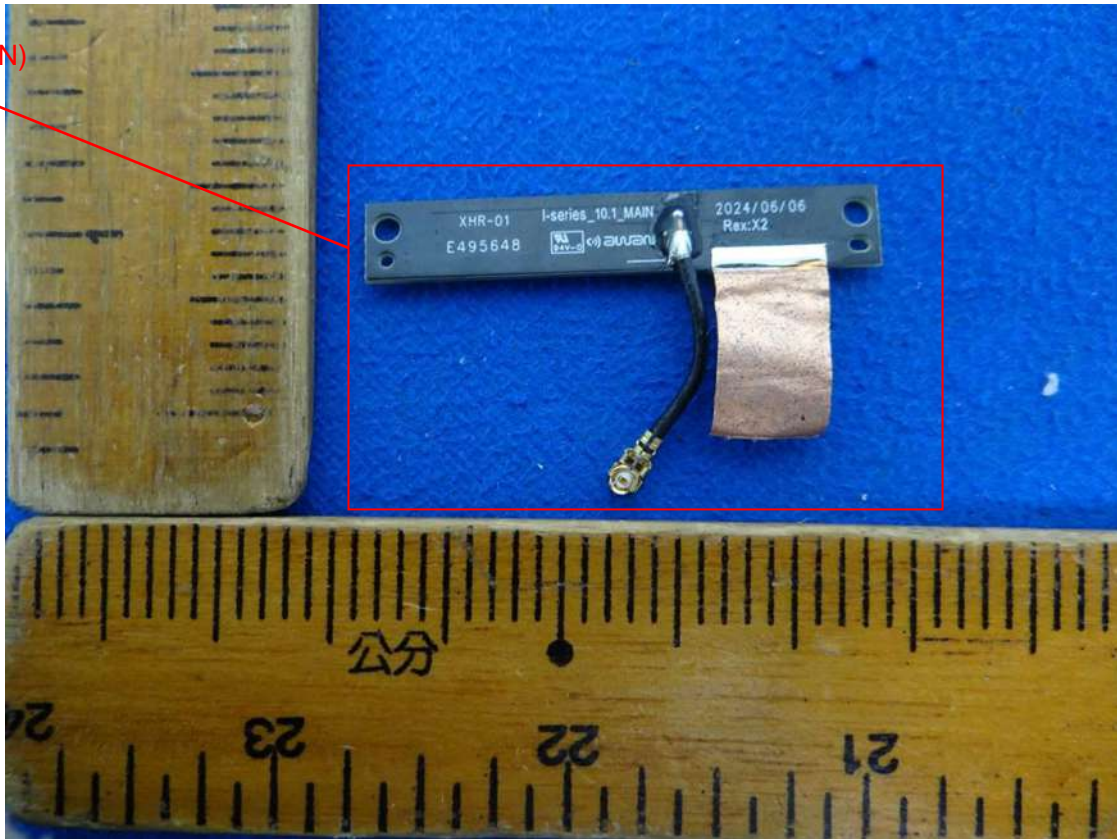








Ant B (For WLAN)

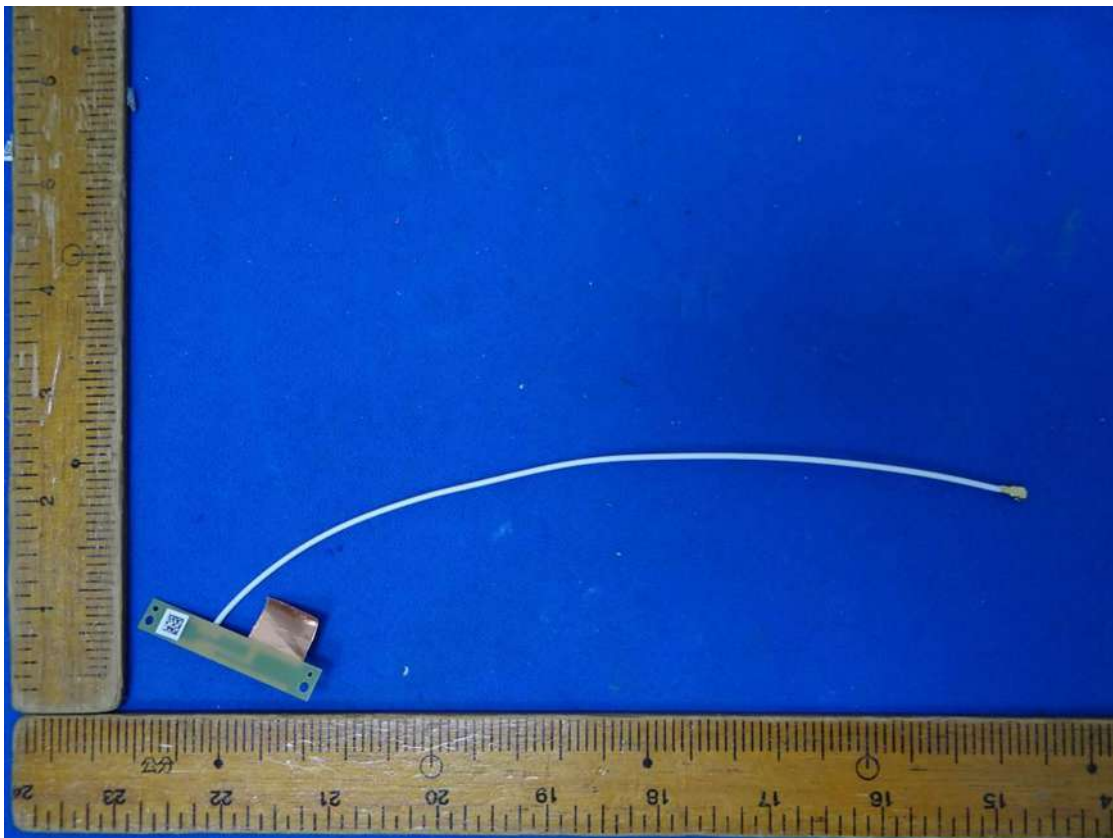
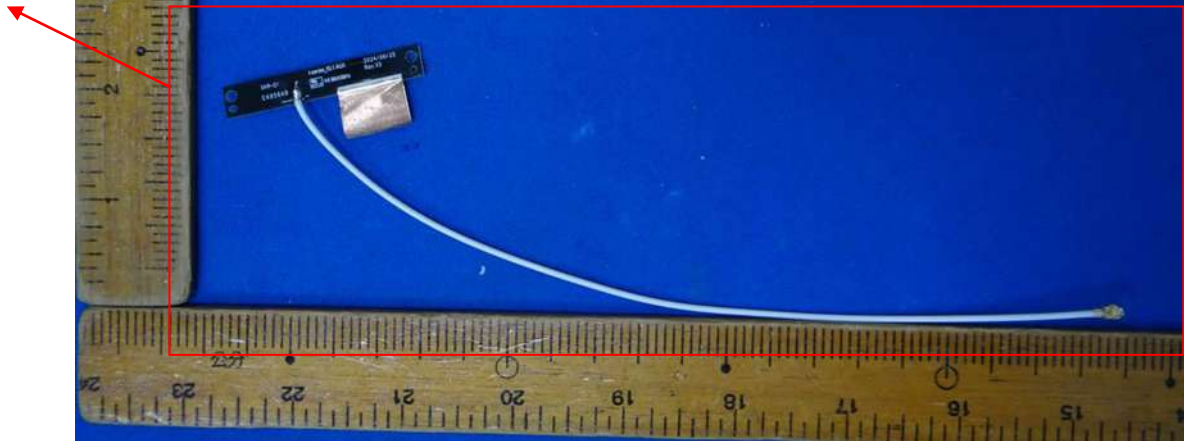




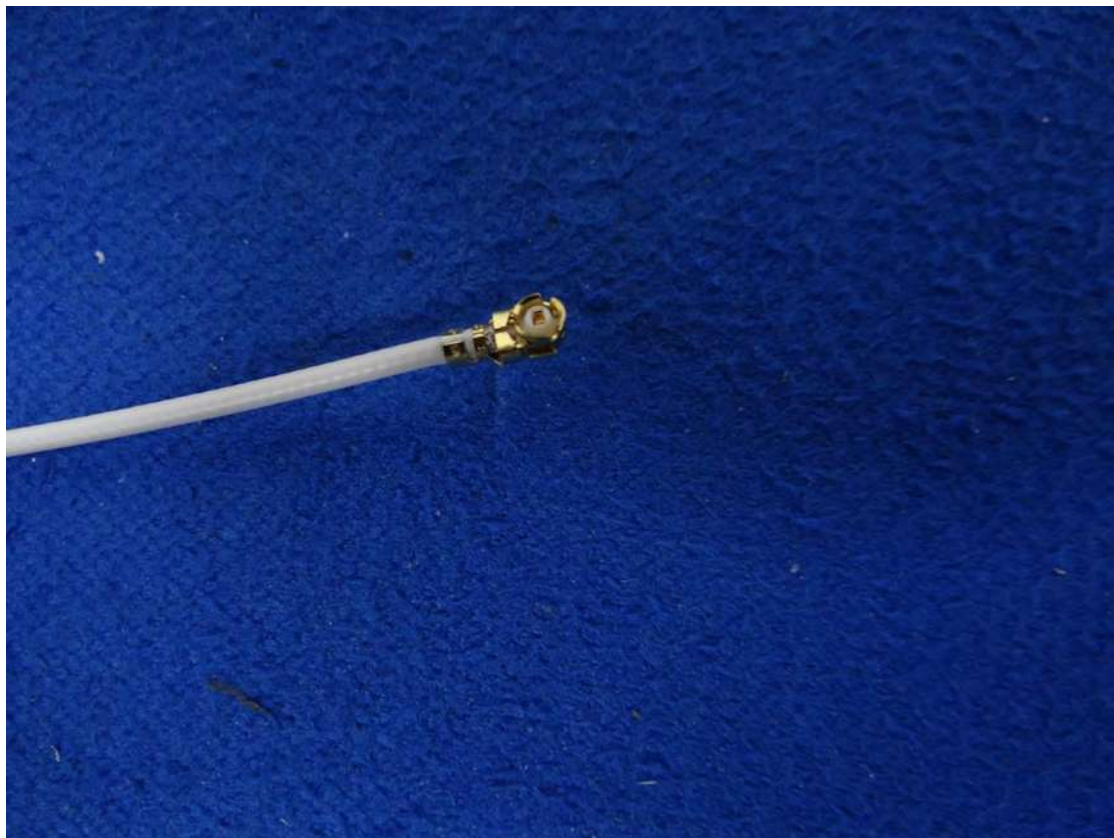




Ant A (For BT/WLAN)









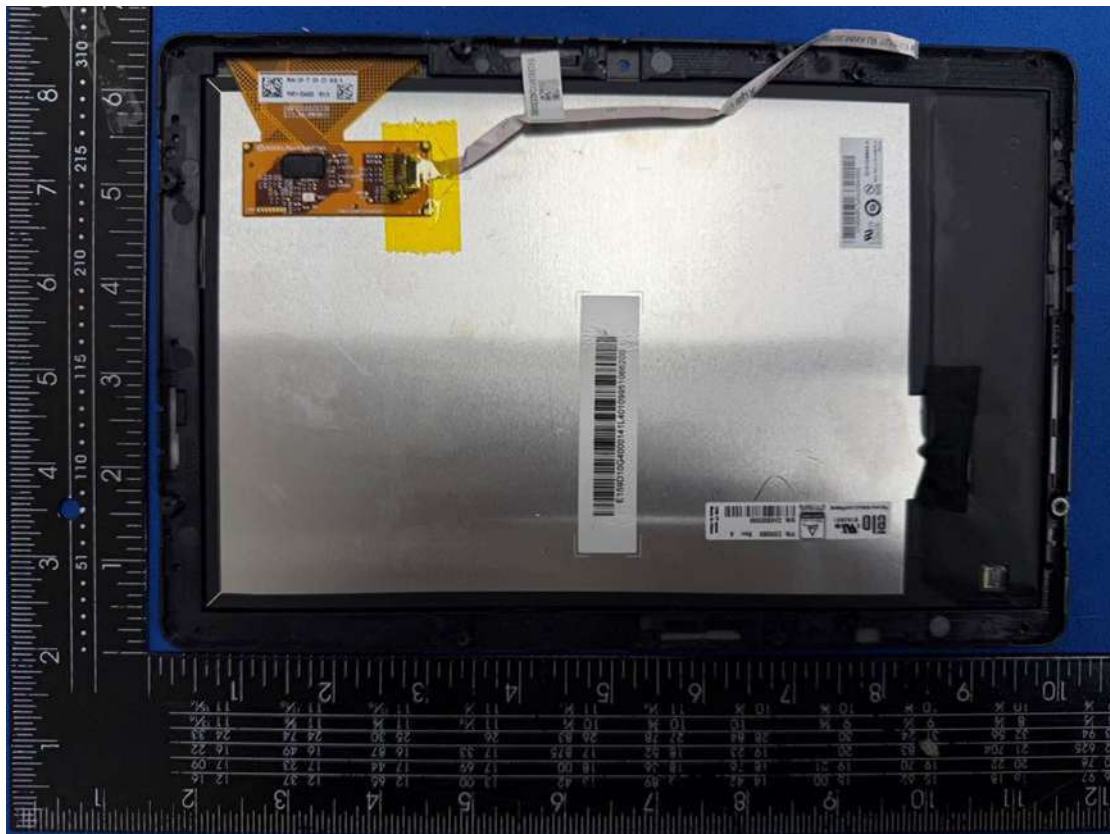
Panel Brand: BOE ,Model: TV101WUM-NH3







Panel Brand: AUO ,Model: G101UAN4.0







For ESY1511E

