

# System Performance Check Report for D5GHzV2 - SN1138

## Exposure Conditions

Frequency [MHz]   Channel Number	5750.000   0	TSL Permittivity	36.2
Group   UID	CW   0--	TSL Conductivity [S/m]	5.02
Conversion Factor	5.14	Phantom Section   TSL	Flat   Head Simulating Liquid

## Hardware Setup

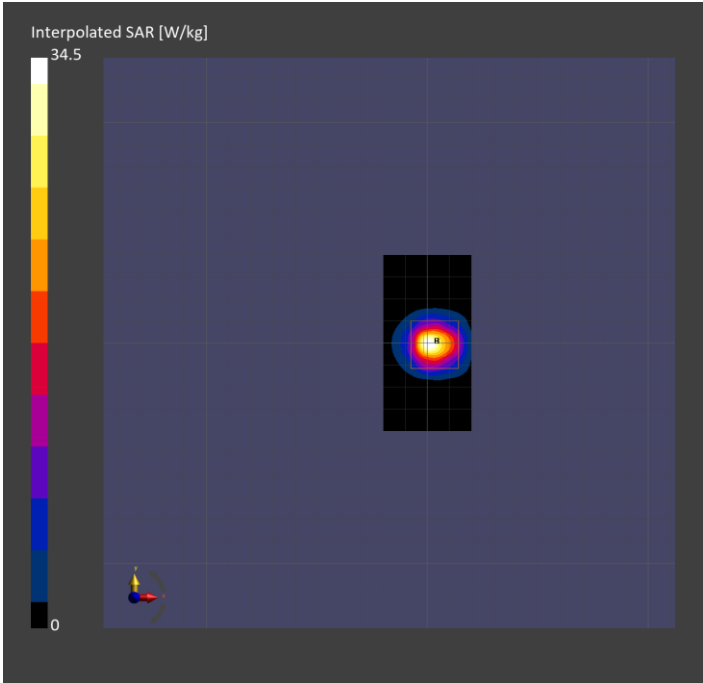
Probe   Calibration Date	EX3DV4 - SN3772   2025-02-11	Phantom	ELI V5.0 (20deg probe tilt)
DAE   Calibration Date	DAE4 Sn1545   2025-02-06	TSL Type	HBBL-600-10000
Software Version	16.4.0.5005		

## Scans Setup

	Area Scan	Zoom Scan
Grid Extents [mm]	40.0 x 80.0	22.0 x 22.0 x 22.0
Grid Steps [mm]	10.0 x 10.0	4.0 x 4.0 x 1.4
Sensor Surface [mm]	3.0	1.4
Graded Grid	N/A	Yes
M2/M1 [%]		59.6
Dist 3dB Peak [mm]		7.3

## Measurement Results

	Area Scan	Zoom Scan
psSAR1g [W/Kg]	7.18	7.73
psSAR10g [W/Kg]	2.12	2.22
Power Drift [dB]	0.06	0.03



System Performance Check Report for D5GHzV2 - SN1138

Exposure Conditions

Frequency [MHz]   Channel Number	5750.000   0	TSL Permittivity	35.2
Group   UID	CW   0--	TSL Conductivity [S/m]	5.03
Conversion Factor	5.14	Phantom Section   TSL	Flat   Head Simulating Liquid

Hardware Setup

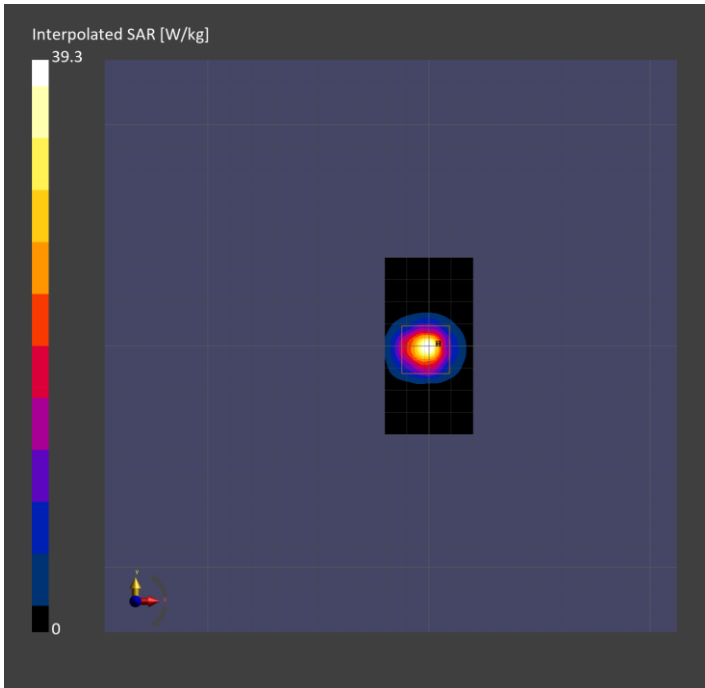
Probe   Calibration Date	EX3DV4 - SN3772   2025-02-11	Phantom	ELI V5.0 (20deg probe tilt)
DAE   Calibration Date	DAE4 Sn1545   2025-02-06	TSL Type	HBBL-600-10000
Software Version	16.4.0.5005		

Scans Setup

	Area Scan	Zoom Scan
Grid Extents [mm]	40.0 x 80.0	22.0 x 22.0 x 22.0
Grid Steps [mm]	10.0 x 10.0	4.0 x 4.0 x 1.4
Sensor Surface [mm]	3.0	1.4
Graded Grid	N/A	Yes
M2/M1 [%]		57.1
Dist 3dB Peak [mm]		7.4

Measurement Results

	Area Scan	Zoom Scan
psSAR1g [W/Kg]	7.43	8.42
psSAR10g [W/Kg]	2.15	2.38
Power Drift [dB]	-0.05	-0.03



System Performance Check Report for D5GHzV2 - SN1138

Exposure Conditions

Frequency [MHz]   Channel Number	5850.000   0	TSL Permittivity	36.9
Group   UID	CW   0--	TSL Conductivity [S/m]	5.19
Conversion Factor	5.37	Phantom Section   TSL	Flat   Head Simulating Liquid

Hardware Setup

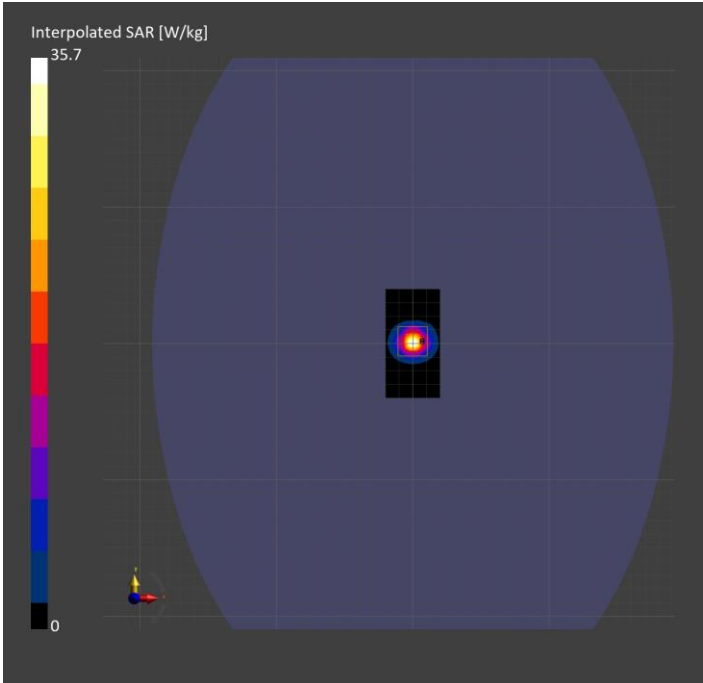
Probe   Calibration Date	EX3DV4 - SN7808   2024-05-08	Phantom	ELI V5.0 (20deg probe tilt)
DAE   Calibration Date	DAE4 Sn1239   2024-03-06	TSL Type	HBBL-600-10000
Software Version	16.4.0.5005		

Scans Setup

	Area Scan	Zoom Scan
Grid Extents [mm]	40.0 x 80.0	22.0 x 22.0 x 22.0
Grid Steps [mm]	10.0 x 10.0	4.0 x 4.0 x 1.4
Sensor Surface [mm]	3.0	1.4
Graded Grid	N/A	Yes
M2/M1 [%]		59.0
Dist 3dB Peak [mm]		7.2

Measurement Results

	Area Scan	Zoom Scan
psSAR1g [W/Kg]	7.05	7.46
psSAR10g [W/Kg]	1.99	2.11
Power Drift [dB]	N/A	0.11



# System Performance Check Report for D5GHzV2 - SN1003

## Exposure Conditions

Frequency [MHz]   Channel Number	5250.000   0	TSL Permittivity	37.5
Group   UID	CW   0--	TSL Conductivity [S/m]	4.61
Conversion Factor	5.56	Phantom Section   TSL	Flat   Head Simulating Liquid

## Hardware Setup

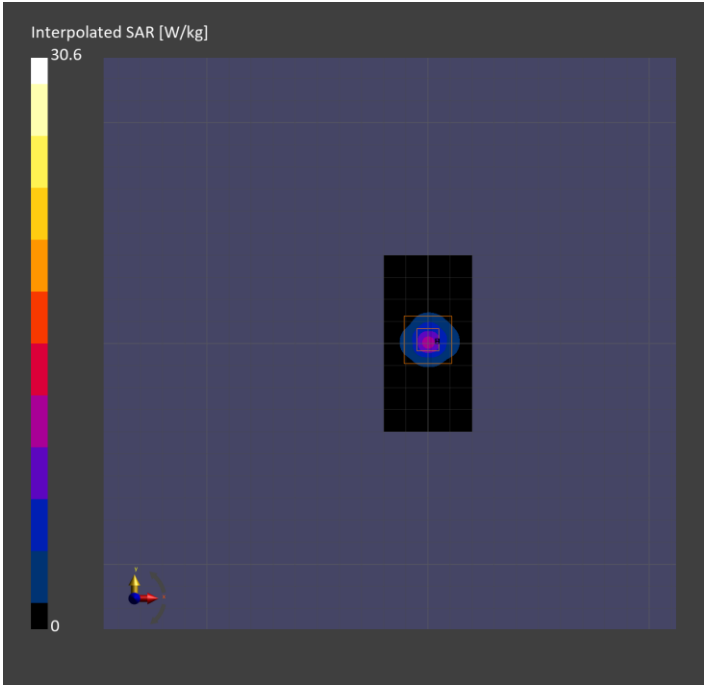
Probe   Calibration Date	EX3DV4 - SN7808   2024-05-08	Phantom	ELI V5.0 (20deg probe tilt)
DAE   Calibration Date	DAE4 Sn1239   2024-03-06	TSL Type	HBBL-600-10000
Software Version	16.4.0.5005		

## Scans Setup

	Area Scan	Zoom Scan
Grid Extents [mm]	40.0 x 80.0	22.0 x 22.0 x 22.0
Grid Steps [mm]	10.0 x 10.0	4.0 x 4.0 x 1.4
Sensor Surface [mm]	3.0	1.4
Graded Grid	N/A	Yes
M2/M1 [%]		65.4
Dist 3dB Peak [mm]		7.3

## Measurement Results

	Area Scan	Zoom Scan
psSAR1g [W/Kg]	7.10	7.40
psSAR10g [W/Kg]	2.04	2.12
Power Drift [dB]	N/A	-0.04



# System Performance Check Report for D5GHzV2 - SN1138

## Exposure Conditions

Frequency [MHz]   Channel Number	5750.000   0	TSL Permittivity	35.8
Group   UID	CW   0--	TSL Conductivity [S/m]	5.04
Conversion Factor	5.37	Phantom Section   TSL	Flat   Head Simulating Liquid

## Hardware Setup

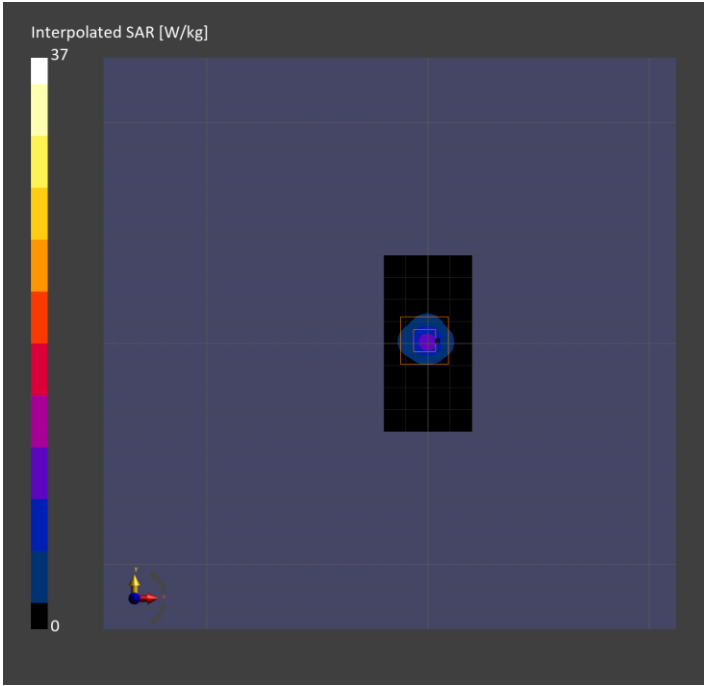
Probe   Calibration Date	EX3DV4 - SN7808   2024-05-08	Phantom	ELI V5.0 (20deg probe tilt)
DAE   Calibration Date	DAE4 Sn1239   2024-03-06	TSL Type	HBBL-600-10000
Software Version	16.4.0.5005		

## Scans Setup

	Area Scan	Zoom Scan
Grid Extents [mm]	40.0 x 80.0	22.0 x 22.0 x 22.0
Grid Steps [mm]	10.0 x 10.0	4.0 x 4.0 x 1.4
Sensor Surface [mm]	3.0	1.4
Graded Grid	N/A	Yes
M2/M1 [%]		58.8
Dist 3dB Peak [mm]		7.2

## Measurement Results

	Area Scan	Zoom Scan
psSAR1g [W/Kg]	7.49	7.93
psSAR10g [W/Kg]	2.12	2.26
Power Drift [dB]	N/A	-0.01



# System Performance Check Report for D5GHzV2 - SN1168

## Exposure Conditions

Frequency [MHz]   Channel Number	5250.000   0	TSL Permittivity	38.6
Group   UID	CW   0--	TSL Conductivity [S/m]	4.46
Conversion Factor	5.79	Phantom Section   TSL	Flat   Head Simulating Liquid

## Hardware Setup

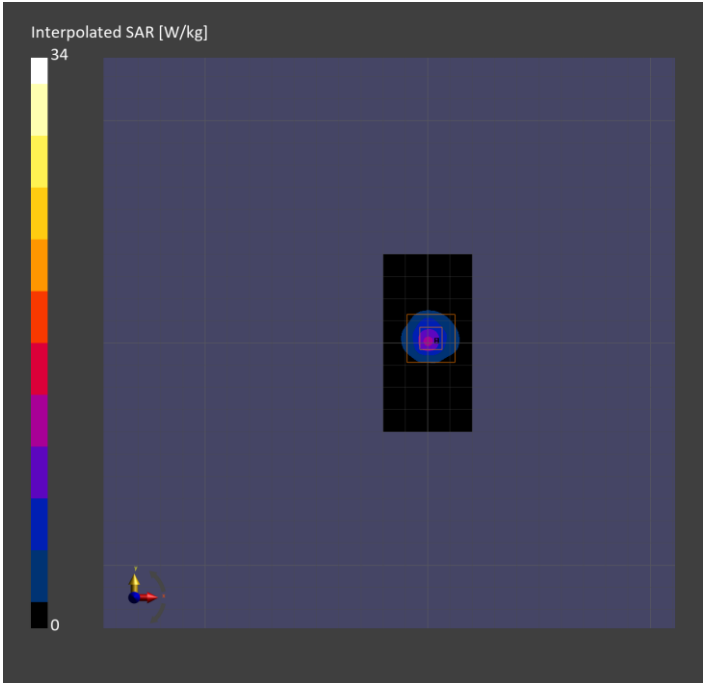
Probe   Calibration Date	EX3DV4 - SN3773   2025-02-11	Phantom	ELI V5.0 (20deg probe tilt)
DAE   Calibration Date	DAE4 Sn1548   2025-02-07	TSL Type	HBBL-600-10000
Software Version	16.4.0.5005		

## Scans Setup

	Area Scan	Zoom Scan
Grid Extents [mm]	40.0 x 80.0	22.0 x 22.0 x 22.0
Grid Steps [mm]	10.0 x 10.0	4.0 x 4.0 x 1.4
Sensor Surface [mm]	3.0	1.4
Graded Grid	N/A	Yes
M2/M1 [%]		65.3
Dist 3dB Peak [mm]		7.2

## Measurement Results

	Area Scan	Zoom Scan
psSAR1g [W/Kg]	7.62	8.17
psSAR10g [W/Kg]	2.21	2.35
Power Drift [dB]	N/A	0.04



System Performance Check Report for D2450V2 - SN706

Exposure Conditions

Frequency [MHz]   Channel Number	2450.000   0	TSL Permittivity	38.0
Group   UID	CW   0--	TSL Conductivity [S/m]	1.79
Conversion Factor	6.96	Phantom Section   TSL	Flat   Head Simulating Liquid

Hardware Setup

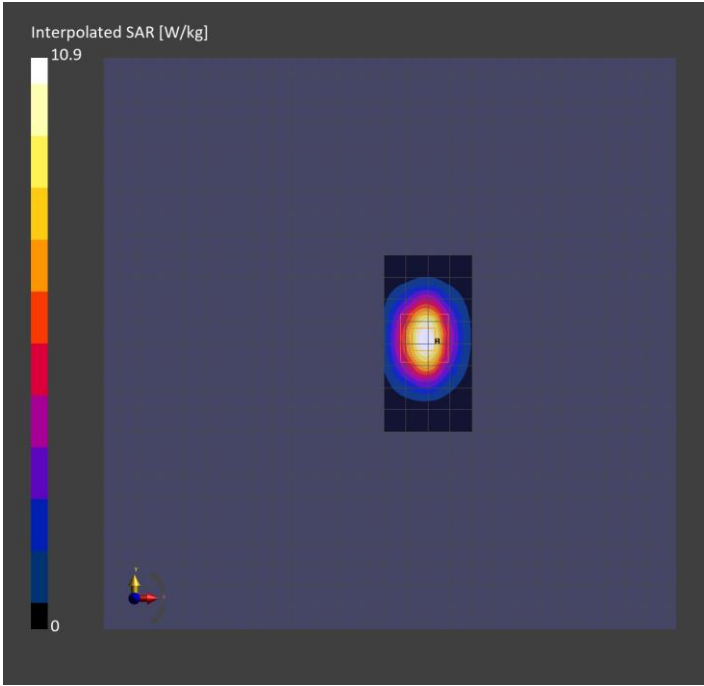
Probe   Calibration Date	EX3DV4 - SN7779   2024-05-10	Phantom	ELI V5.0 (20deg probe tilt)
DAE   Calibration Date	DAE4 Sn1433   2025-02-05	TSL Type	HBBL-600-10000
Software Version	16.4.0.5005		

Scans Setup

	Area Scan	Zoom Scan
Grid Extents [mm]	40.0 x 80.0	30.0 x 30.0 x 30.0
Grid Steps [mm]	10.0 x 10.0	5.0 x 5.0 x 1.5
Sensor Surface [mm]	3.0	1.4
Graded Grid	N/A	Yes
M2/M1 [%]		80.5
Dist 3dB Peak [mm]		9.0

Measurement Results

	Area Scan	Zoom Scan
psSAR1g [W/Kg]	5.34	5.36
psSAR10g [W/Kg]	2.50	2.51
Power Drift [dB]	N/A	-0.01



# System Performance Check Report for D2450V2 - SN706

## Exposure Conditions

Frequency [MHz]   Channel Number	2450.000   0	TSL Permittivity	41.1
Group   UID	CW   0--	TSL Conductivity [S/m]	1.65
Conversion Factor	7.04	Phantom Section   TSL	Flat   Head Simulating Liquid

## Hardware Setup

Probe   Calibration Date	EX3DV4 - SN7807   2024-05-08	Phantom	ELI V4.0 (20deg probe tilt)
DAE   Calibration Date	DAE4 Sn1799   2024-05-02	TSL Type	HBBL-600-10000
Software Version	16.4.0.5005		

## Scans Setup

	Area Scan	Zoom Scan
Grid Extents [mm]	40.0 x 80.0	30.0 x 30.0 x 30.0
Grid Steps [mm]	10.0 x 10.0	5.0 x 5.0 x 1.5
Sensor Surface [mm]	3.0	1.4
Graded Grid	N/A	Yes
M2/M1 [%]		80.3
Dist 3dB Peak [mm]		9.0

## Measurement Results

	Area Scan	Zoom Scan
psSAR1g [W/Kg]	5.13	5.07
psSAR10g [W/Kg]	2.36	2.40
Power Drift [dB]	N/A	-0.00

