

# **EXHIBIT 7**

## **Photographs Internal Construction SECTION 2.1033 (a) (7)**

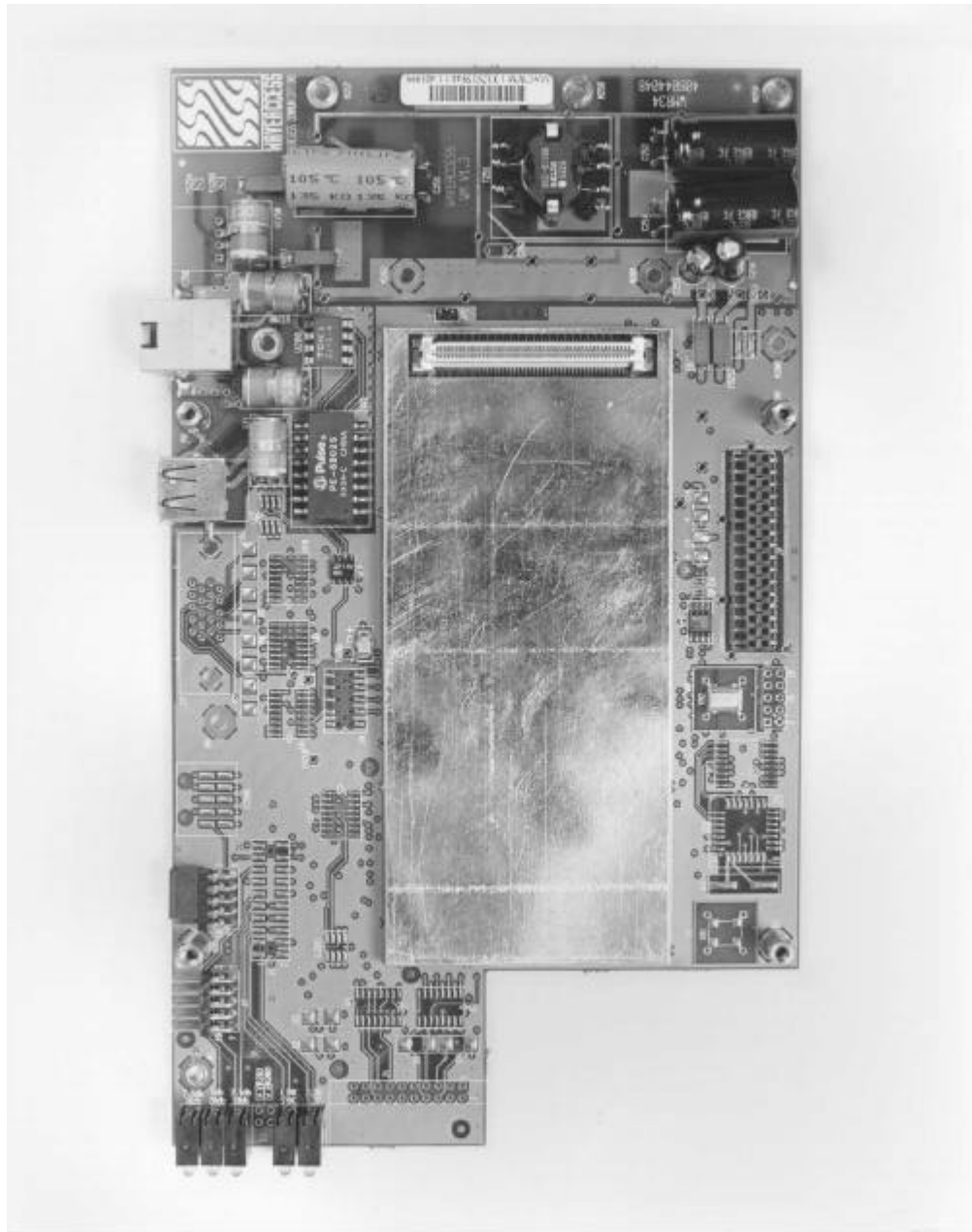


Photo Shows component side of transmitter board

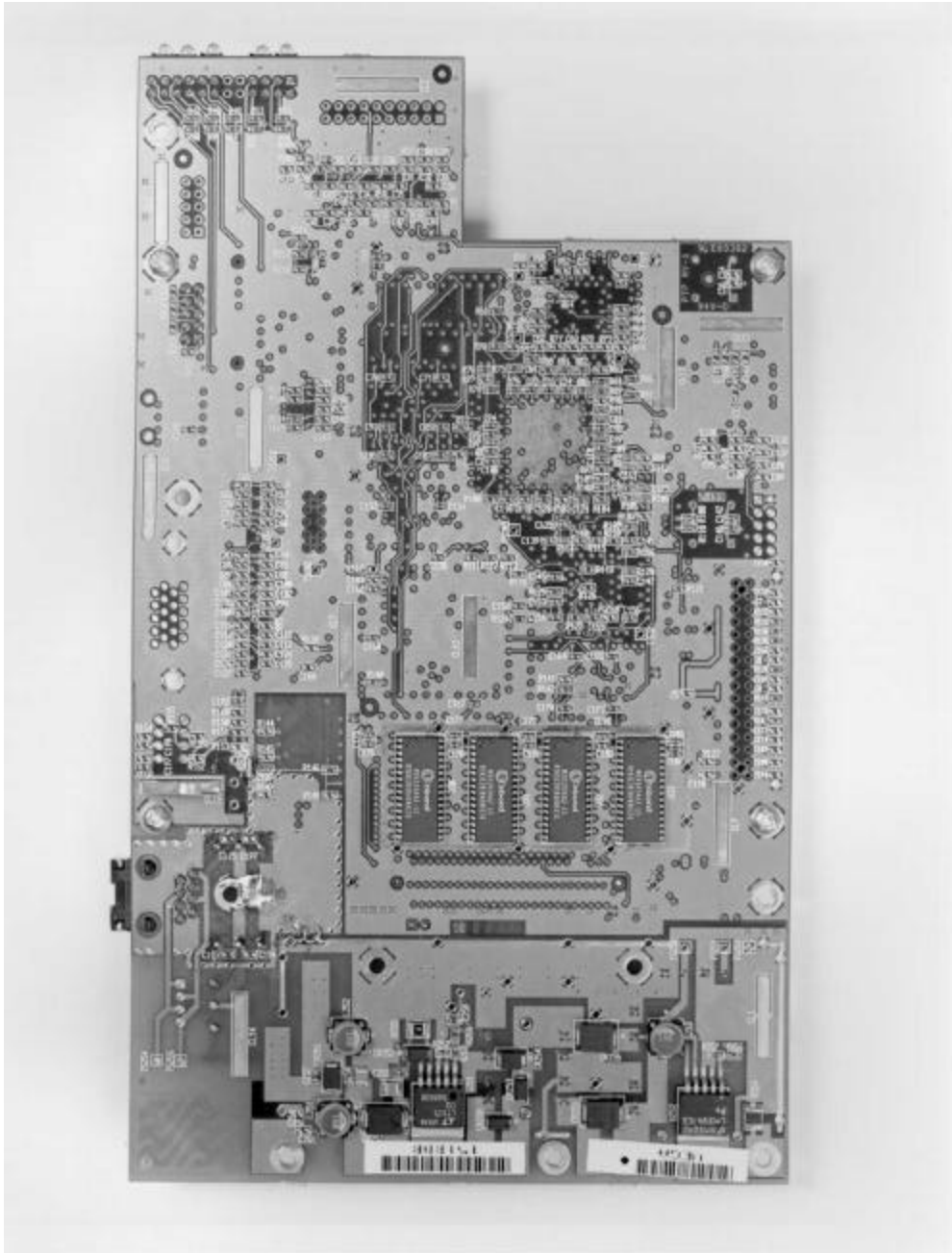


Photo Shows solder side of transmitter board



Photo shows internal antenna

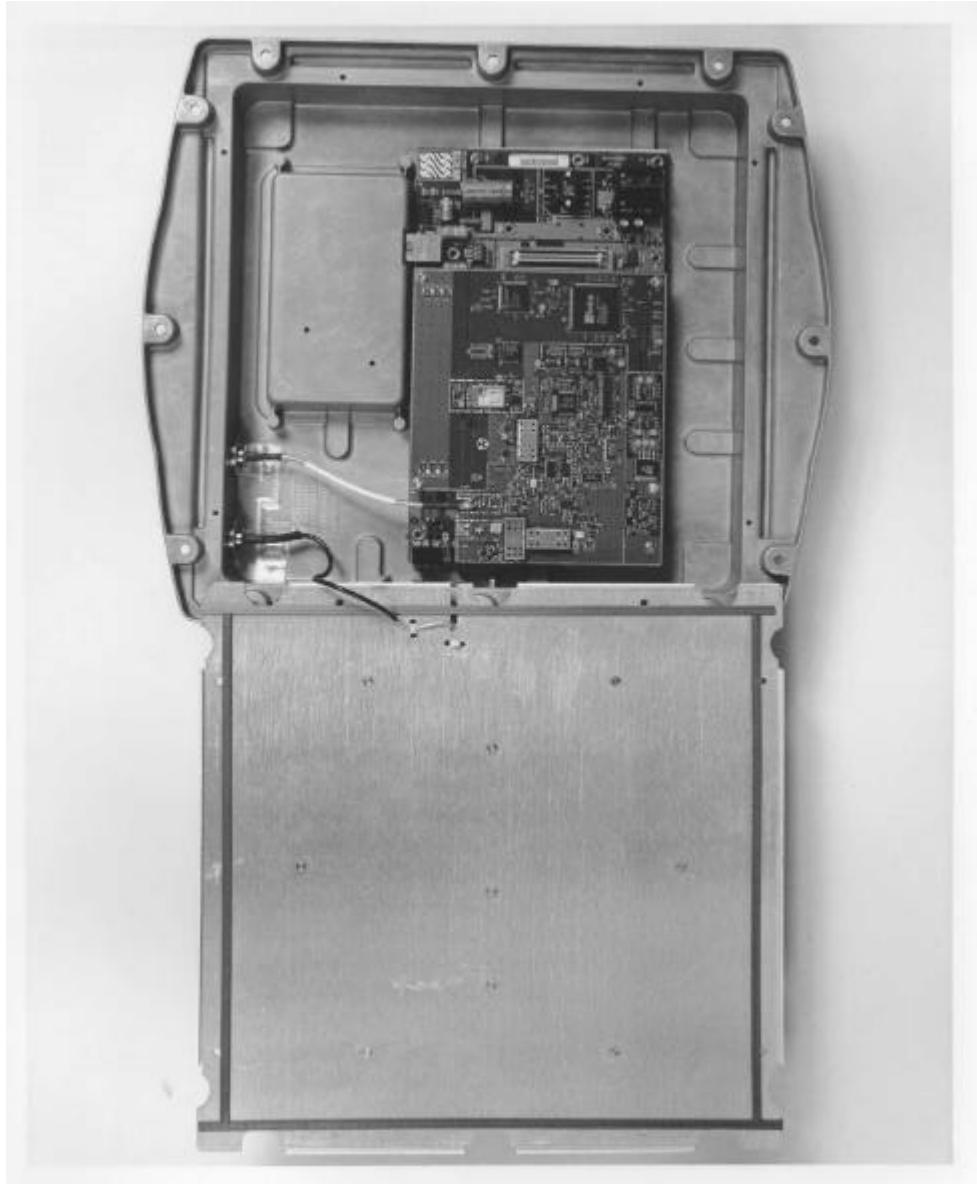


Photo Shows internal view of stacked circuit boards  
RF board on top

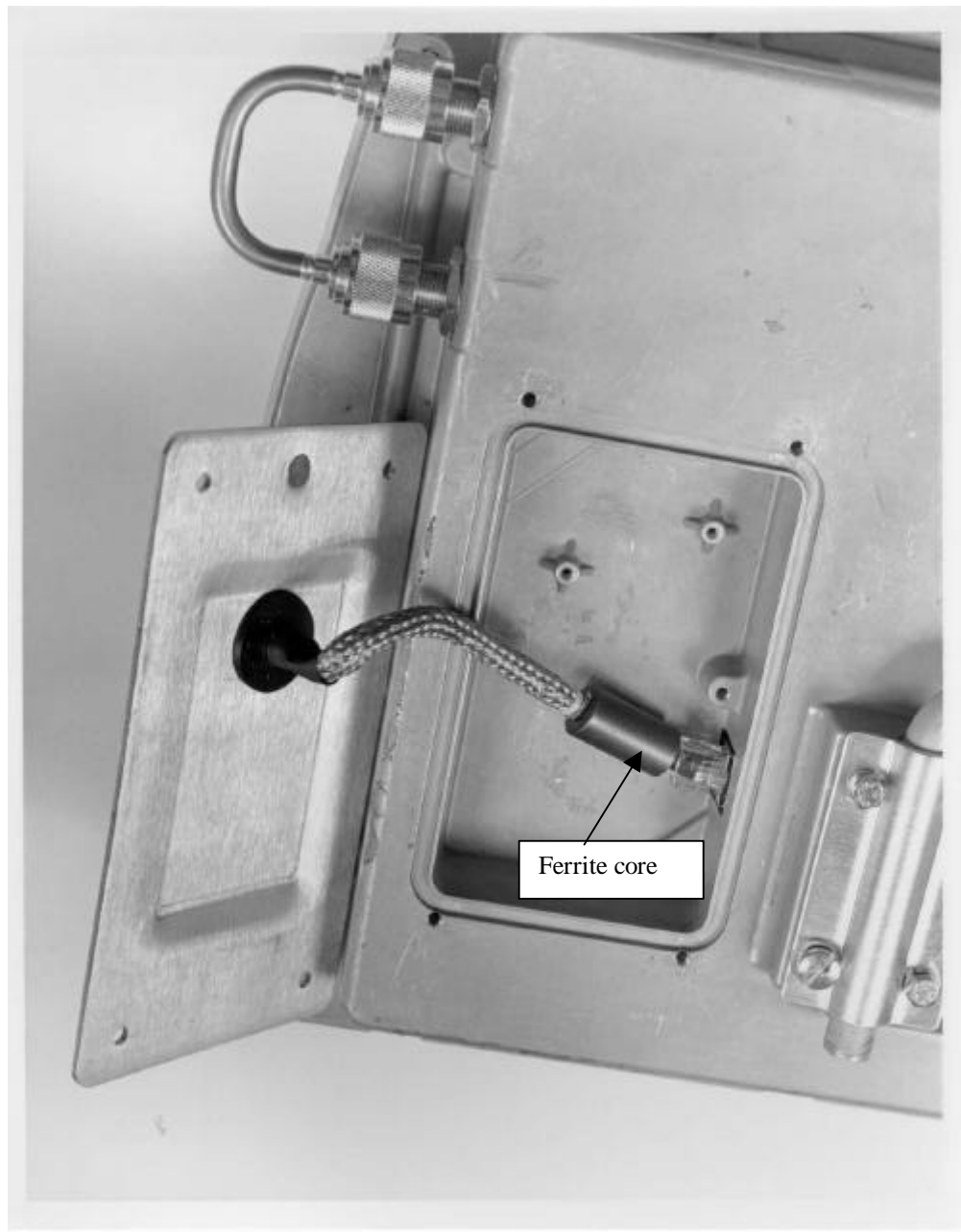


Photo Shows power/data interface cable compartment