

# FCC SAR REPORT

**Report No.:** JYTSZ-R14-2400163

**Applicant:** Voxx Electronics Corporation

**Address of Applicant:** 2365 Pontiac Road, Auburn Hills, Michigan 48326 - USA

**Equipment Under Test (EUT)**

Product Name: 7858V

Model No.: 7858V

Trade mark: N/A

**FCC ID:** EZS7858V

**Applicable standards:** FCC 47 CFR Part 2.1093

**Date of Test:** 13 Nov., 2024

**Test Result:** Maximum Reported 10-g SAR (W/kg)  
Extremity: 1.162

**Project by:** \_\_\_\_\_

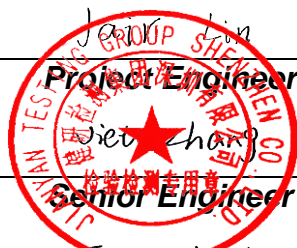
**Date:** 24 Dec., 2024

**Reviewed by:** \_\_\_\_\_

**Date:** 24 Dec., 2024

**Approved by:** \_\_\_\_\_

**Date:** 24 Dec., 2024



**Manager**

This report details the results of the testing carried out on one sample. The results contained in this test report do not relate to other samples of the same product and does not permit the use of the JYT product certification mark. The manufacturer should ensure that all products in series production are in conformity with the product sample detailed in this report.

This report may only be reproduced and distributed in full. If the product in this report is used in any configuration other than that detailed in the report, the manufacturer must ensure the new system complies with all relevant standards.

This document cannot be reproduced except in full, without prior written approval of the Company. Any unauthorized alteration, forgery or falsification of the content or appearance of this document is unlawful and offenders may be prosecuted to the fullest extent of the law. Unless otherwise stated the results shown in this test report refer only to the sample(s) tested and such sample(s) are retained for 90 days only.

## 2 Version

| Version No. | Date          | Description           |
|-------------|---------------|-----------------------|
| 00          | 24 Dec., 2024 | Original              |
| 01          | 27 Dec., 2024 | Update pages 4, 29,30 |
|             |               |                       |
|             |               |                       |
|             |               |                       |

## 3 Contents

|      |  |    |
|------|--|----|
| 1    | COVER PAGE.....  | 1  |
| 2    | VERSION .....  | 2  |
| 3    | CONTENTS .....   | 3  |
| 4    | SAR RESULTS SUMMARY.....                                 | 4  |
| 5    | GENERAL INFORMATION.....                                 | 5  |
| 5.1  | CLIENT INFORMATION.....                                  | 5  |
| 5.2  | GENERAL DESCRIPTION OF EUT .....                         | 5  |
| 5.3  | MAXIMUM RF OUTPUT POWER .....                            | 6  |
| 5.4  | ENVIRONMENT OF TEST SITE .....                           | 7  |
| 5.5  | TEST SAMPLE PLAN .....                                   | 7  |
| 5.6  | TEST LOCATION .....                                      | 7  |
| 6    | INTRODUCTION.....  | 8  |
| 6.1  | INTRODUCTION .....                                       | 8  |
| 6.2  | SAR DEFINITION .....                                     | 8  |
| 7    | RF EXPOSURE LIMITS .....                                 | 9  |
| 7.1  | UNCONTROLLED ENVIRONMENT.....                            | 9  |
| 7.2  | CONTROLLED ENVIRONMENT .....                             | 9  |
| 7.3  | RF EXPOSURE LIMITS .....                                 | 9  |
| 8    | SAR MEASUREMENT SYSTEM.....                              | 10 |
| 8.1  | E-FIELD PROBE.....                                       | 11 |
| 8.2  | DATA ACQUISITION ELECTRONICS (DAE).....                  | 11 |
| 8.3  | ROBOT .....  | 12 |
| 8.4  | MEASUREMENT SERVER .....                                 | 12 |
| 8.5  | LIGHT BEAM UNIT.....                                     | 12 |
| 8.6  | PHANTOM.....   | 13 |
| 8.7  | DEVICE HOLDER.....                                       | 14 |
| 8.8  | DATA STORAGE AND EVALUATION .....                        | 15 |
| 8.9  | TEST EQUIPMENT LIST .....                                | 17 |
| 9    | TISSUE SIMULATING LIQUIDS .....                          | 18 |
| 10   | SAR SYSTEM VERIFICATION.....                             | 20 |
| 11   | EUT TESTING POSITION.....                                | 22 |
| 11.1 | EXTREMITY SAR CONFIGURATIONS .....                       | 22 |
| 12   | MEASUREMENT PROCEDURES .....                             | 23 |
| 12.1 | SPATIAL PEAK SAR EVALUATION .....                        | 23 |
| 12.2 | POWER REFERENCE MEASUREMENT.....                         | 24 |
| 12.3 | AREA & ZOOM SCAN PROCEDURES.....                         | 24 |
| 12.4 | VOLUME SCAN PROCEDURES .....                             | 25 |
| 12.5 | SAR AVERAGED METHODS .....                               | 25 |
| 12.6 | POWER DRIFT MONITORING .....                             | 25 |
| 12.7 | RFID CONDUCTED POWER .....                               | 26 |
| 12.8 | BLE CONDUCTED POWER .....                                | 26 |
| 13   | EXPOSURE POSITIONS CONSIDERATION .....                   | 27 |
| 13.1 | EUT ANTENNA LOCATIONS.....                               | 27 |
| 14   | SAR TEST RESULTS SUMMARY .....                           | 28 |
| 14.1 | STANDALONE EXTREMITY SAR .....                           | 28 |
| 14.2 | MULTI-BAND SIMULTANEOUS TRANSMISSION CONSIDERATIONS..... | 29 |
| 14.3 | SAR SIMULTANEOUS TRANSMISSION ANALYSIS.....              | 30 |
| 14.4 | MEASUREMENT CONCLUSION .....                             | 31 |
| 15   | REFERENCE.....   | 32 |
|      | APPENDIX A: PLOTS OF SAR SYSTEM CHECK .....              | 33 |
|      | APPENDIX B: PLOTS OF SAR TEST DATA .....                 | 35 |

## 4 SAR Results Summary

The maximum results of Specific Absorption Rate (SAR) found during test as below:

<Highest Reported standalone SAR Summary>

| Exposure Position    | Frequency Band | Reported 10-g SAR (W/kg) | Highest Reported 10-g SAR (W/kg) |
|----------------------|----------------|--------------------------|----------------------------------|
| Extremity (0 mm Gap) | RFID           | 1.162                    | 1.162                            |

<Highest Reported simultaneous SAR Summary>

| Exposure Position | Frequency Band | Reported 10-g SAR (W/kg) | Highest Reported Simultaneous Transmission 10-g SAR (W/kg) |
|-------------------|----------------|--------------------------|--|
| Front             | RFID           | 1.162                    | 1.288  |
|                   | BLE            | 0.126                    |  |

**Note:**

1. The highest simultaneous transmission is scalar summation of Reported standalone SAR per FCC KDB 690783 D01 v01r03, and scalar SAR summation of all possible simultaneous transmission scenarios are < 4.0W/kg.
2. This device is compliance with Specific Absorption Rate (SAR) for general population/uncontrolled exposure limits (4.0 W/kg) specified in FCC 47 CFR part 2 (2.1093) and ANSI/IEEE C95.1-2005, and had been tested in accordance with the measurement methods and procedures specified in IEC/IEEE 62209-1528.

## 5 General Information

### 5.1 Client Information

|                          |  |
|--------------------------|--|
| Applicant:               | Voxx Electronics Corporation   |
| Address of Applicant:    | 2365 Pontiac Road, Auburn Hills, Michigan 48326 - USA                          |
| Manufacturer:            | Nutek Coroproration  |
| Address of Manufacturer: | no.167, Lane 235, Bauchiau Rd, Xindian District, New Taeipi City 23145, Taiwan |
| Factory                  | Voxx Automotive Corporation  |
| Address of Address       | 2351 J. Lawson Blvd, Orlando, FL 32824 - USA                                   |

### 5.2 General Description of EUT

|                          |  |  |
|--------------------------|--|--|
| Product Name:            | 7858V  |  |
| Model No.:               | 7858V  |  |
| Category of device       | Portable device  |  |
| Operation Frequency:     | RFID:  | 902 MHz - 928 MHz                            |
|                          | BLE:   | 2402 MHz ~ 2480 MHz                          |
| Modulation technology:   | RFID:  | <input checked="" type="checkbox"/> FHSS     |
|                          | BLE:   | <input checked="" type="checkbox"/> LE(GFSK) |
| Antenna Type:            | Internal Antenna                                       |  |
| Antenna Gain:            | RFID:  | 2.06 dBi                                     |
|                          | BLE:   | 3.77 dBi                                     |
| Dimensions (L*W*H):      | 58 mm (L)× 35 mm (W)× 10 mm (H)                        |  |
| Accessories information: | Battery:<br>Rechargeable Li-ion Battery DC3.7V, 100mAh |  |

### 5.3 Maximum RF Output Power

| Mode | Average Power (dBm) |
|------|---------------------|
|      | RFID                |
| FHSS | 22.23               |

| BLE Average Power (dBm) |               |               |
|-------------------------|---------------|---------------|
| Mode/Band               | BLE PHY<br>1M | BLE PHY<br>2M |
| BLE                     | -5.92         | -5.92         |

#### 5.4 Environment of Test Site

|                       |             |
|-----------------------|-------------|
| Temperature:          | 18°C ~25 °C |
| Humidity:             | 35%~75% RH  |
| Atmospheric Pressure: | 1010 mbar   |

#### 5.5 Test Sample Plan

| Sample Number  | Used for Test Items |
|--|---------------------|
| SZR122401307-1   | SAR                 |
| <b>Remark:</b> JianYan Testing Group Shenzhen Co., Ltd. is only responsible for the test project data of the above samples, and will keep the above samples for a month. |                     |

#### 5.6 Test Location

|   |
|---|
| JianYan Testing Group Shenzhen Co., Ltd.<br>No.101, Building 8, Innovation Wisdom Port, No.155 Hongtian Road, Huangpu Community, Xinqiao Street,<br>Bao'an District, Shenzhen, Guangdong, People's Republic of China.<br>Tel: +86-755-23118282, Fax: +86-755-23116366<br>Email: info-JYTee@lets.com, Website: <a href="http://jyt.lets.com">http://jyt.lets.com</a> |
|---|

## 6 Introduction

### 6.1 Introduction

SAR is related to the rate at which energy is absorbed per unit mass in an object exposed to a radio field. The SAR distribution in a biological body is complicated and is usually carried out by experimental techniques or numerical modeling. The standard recommends limits for two tiers of groups, occupational/controlled and general population/uncontrolled, based on a person's awareness and ability to exercise control over his or her exposure. In general, occupational/controlled exposure limits are higher than the limits for general population/uncontrolled.

### 6.2 SAR Definition

The SAR definition is the time derivative (rate) of the incremental energy (dW) absorbed by (dissipated in) an incremental mass (dm) contained in a volume element (dv) of a given density (ρ). The equation description is as below:

$$SAR = \frac{d}{dt} \left( \frac{dU}{dm} \right) = \frac{d}{dt} \left( \frac{dU}{\rho dv} \right)$$

SAR is expressed in units of Watts per kilogram (W/kg)

SAR measurement can be either related to the temperature elevation in tissue by

$$SAR = C \left( \frac{\delta T}{\delta t} \right)$$

Where: C is the specific heat capacity,  $\delta T$  is the temperature rise and  $\delta t$  is the exposure duration, or related to the electrical field in the tissue by

$$SAR = \frac{\sigma \cdot E^2}{\rho}$$

Where:  $\sigma$  is the conductivity of the tissue,  $\rho$  is the mass density of the tissue and E is the RMS electrical field strength. However for evaluating SAR of low power transmitter, electrical field measurement is typically applied.



## 7 RF Exposure Limits

### 7.1 Uncontrolled Environment

Uncontrolled Environments are defined as locations where there is the exposure of individuals who have no knowledge or control of their exposure. The general population/uncontrolled exposure limits are applicable to situations in which the general public may be exposed or in which persons who are exposed as a consequence of their employment may not be made fully aware of the potential for exposure or cannot exercise control over their exposure. Members of the general public would come under this category when exposure is not employment-related; for example, in the case of a wireless transmitter that exposes persons in its vicinity.

### 7.2 Controlled Environment

Controlled Environments are defined as locations where there is exposure that may be incurred by persons who are aware of the potential for exposure, (i.e. as a result of employment or occupation). In general, occupational/controlled exposure limits are applicable to situations in which persons are exposed as a consequence of their employment, who have been made fully aware of the potential for exposure and can exercise control over their exposure. This exposure category is also applicable when the exposure is of a transient nature due to incidental passage through a location where the exposure levels may be higher than the general population/uncontrolled limits, but the exposed person is fully aware of the potential for exposure and can exercise control over his or her exposure by leaving the area or by some other appropriate means.

### 7.3 RF Exposure Limits

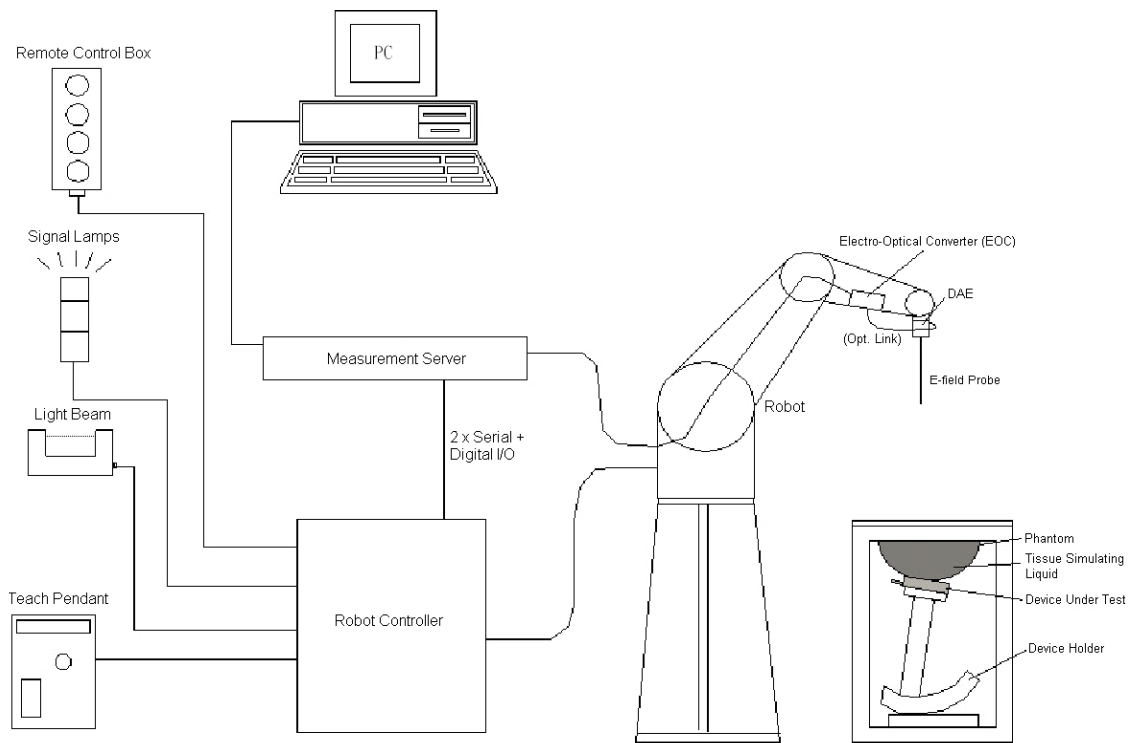
**SAR Human Exposure Specified in ANSI/IEEE C95.1-1992 and Health Canada Safety Code 6**

| HUMAN EXPOSURE LIMITS                           |   |   |
|---|---|---|
|   | UNCONTROLLED ENVIRONMENT<br><i>General Population</i><br>(W/kg) or (mW/g) | CONTROLLED ENVIRONMENT<br><i>Occupational</i><br>(W/kg) or (mW/g) |
| SPATIAL PEAK SAR<br>Brain                       | 1.6   | 8.0   |
| SPATIAL AVERAGE SAR<br>Whole Body               | 0.08  | 0.4   |
| SPATIAL PEAK SAR<br>Hands, Feet, Ankles, Wrists | 4.0   | 20  |

**Note:**

1. The Spatial Peak value of the SAR averaged over any 1 gram of tissue (defined as a tissue volume in the shape of a cube) and over the appropriate averaging time.
2. The Spatial Average value of the SAR averaged over the whole body.
3. The Spatial Peak value of the SAR averaged over any 10 grams of tissue (defined as a tissue volume in the shape of a cube) and over the appropriate averaging time.

## 8 SAR Measurement System



**Fig. 8.1 SPEAG DASY System Configurations**

The DASY system for performance compliance tests is illustrated above graphically. This system consists of the following items:

- A standard high precision 6-axis robot with controller, a teach pendant and software
- A data acquisition electronic (DAE) attached to the robot arm extension
- A dosimetric probe equipped with an optical surface detector system
- The electro-optical converter (EOC) performs the conversion between optical and electrical signals
- A measurement server performs the time critical tasks such as signal filtering, control of the robot operation and fast movement interrupts.
- A probe alignment unit which improves the accuracy of the probe positioning
- A computer operating Windows XP
- DASY software
- Remote control with teach pendant and additional circuitry for robot safety such as warning lamps, etc.
- The SAM twin phantom
- A device holder
- Tissue simulating liquid
- Dipole for evaluating the proper functioning of the system

Component details are described in the following sub-sections.

## 8.1 E-Field Probe

The SAR measurement is conducted with the dosimetric probe (manufactured by SPEAG). The probe is specially designed and calibrated for use in liquid with high permittivity. The dosimetric probe has special calibration in liquid at different frequency. This probe has a built in optical surface detection system to prevent from collision with phantom.

### ➤ E-Field Probe Specification

#### <EX3DV4 Probe>

|                              |   |
|------------------------------|---|
| <b>Construction</b>          | Symmetrical design with triangular core Built-in shielding against static charges PEEK enclosure material (resistant to organic solvents, e.g., DGBE)           |
| <b>Frequency Directivity</b> | 10 MHz to 6 GHz; Linearity: $\pm 0.2$ dB<br>$\pm 0.3$ dB in HSL (rotation around probe axis)<br>$\pm 0.5$ dB in tissue material (rotation normal to probe axis) |
| <b>Dynamic Range</b>         | 10 $\mu$ W/g to 100 mW/g; Linearity: $\pm 0.2$ dB<br>(noise: typically $< 1$ $\mu$ W/g)   |
| <b>Dimensions</b>            | Overall length: 330 mm (Tip: 20mm)<br>Tip diameter: 2.5 mm (Body: 12mm)<br>Typical distance from probe tip to dipole centers: 1 mm                              |



Fig. 8.2 Photo of E-Field Probe

### ➤ E-Field Probe Calibration

Each probe needs to be calibrated according to a dosimetric assessment procedure with accuracy better than  $\pm 10\%$ . The spherical isotropy shall be evaluated and within  $\pm 0.25$  dB. The sensitivity parameters (Norm X, Norm Y and Norm Z), the diode compression parameter (DCP) and the conversion factor (ConvF) of the probe are tested. The calibration data can be referred to appendix E of this report.

## 8.2 Data Acquisition Electronics (DAE)

The Data acquisition electronics (DAE) consists of a highly sensitive electrometer-grade preamplifier with auto-zeroing, a channel and gain-switching multiplexer, a fast 16 bit AD-converter and a command decoder and control logic unit. Transmission to the measurement server is accomplished through an optical downlink for data and status information as well as an optical uplink for commands and the clock. The input impedance of the DAE is 200 MOhm; the inputs are symmetrical and floating. Common mode rejection is above 80 dB.

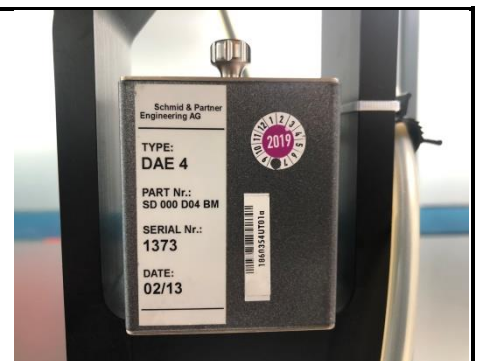


Fig. 8.3 Photo of DAE

## 8.3 Robot

The SPEAG DASY system uses the high precision robots (DASY5: TX60L) type from Stäubli SA (France). For the 6-axis controller system, the robot controller version (DASY5: CS8c) from Stäubli is used. The Stäubli robot series have many features that are important for our application:

- High precision (repeatability 0.02 mm)
- High reliability (industrial design)
- Low maintenance costs (virtually maintenance free due to direct drive gears; nobelt drives)
- Jerk-free straight movements
- Low ELF interference (motor control fields shielded via the closed metallic construction shields)



Fig. 8.4 Photo of Robot

## 8.4 Measurement Server

The measurement server is based on a PC/104 CPU board with CPU (DASY 5: 400MHz, Intel Celeron), chip-disk (DASY5: 128 MB), RAM (DASY5: 128 MB). The necessary circuits for communication with the DAE electronic box, as well as the 16 bit AD converter system for optical detection and digital I/O interface are contained on the DASY I/O board, which is directly connected to the PC/104 bus of the CPU board. The measurement server performs all the real-time data evaluation for field measurements and surface detection, controls robot movements and handles safety operations.



Fig. 8.5 Photo of Server for DASY5

## 8.5 Light Beam Unit

The light beam switch allows automatic "tooling" of the probe. During the process, the actual position of the probe tip with respect to the robot arm is measured, as well as the probe length and the horizontal probe offset. The software then corrects all movements, such that the robot coordinates are valid for the probe tip. The repeatability of this process is better than 0.1 mm. If a position has been taught with an aligned probe, the same position will be reached with another aligned probe within 0.1 mm, even if the other probe has different dimensions. During probe rotations, the probe tip will keep its actual position.



Fig. 8.6 Photo of Light Beam

## 8.6 Phantom

### <SAM Twin Phantom>

|                          |  |
|--------------------------|--|
| <b>Shell Thickness</b>   | 2 ± 0.2 mm;<br>Center ear point: 6 ± 0.2 mm              |
| <b>Filling Volume</b>    | Approx. 25 liters  |
| <b>Dimensions</b>        | Length: 1000mm; Width: 500mm;<br>Height: adjustable feet |
| <b>Measurement Areas</b> | Left Head, Right Head, Flat phantom                      |



**Fig. 8.7 Photo of SAM Twin Phantom**

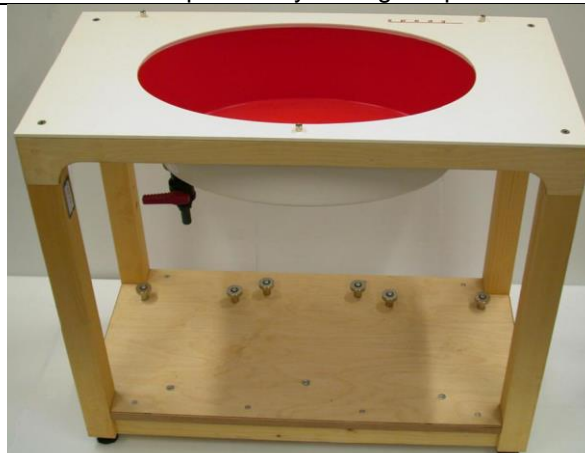
The bottom plate contains three pair of bolts for locking the device holder. The device holder positions are adjusted to the standard measurement positions in the three sections. A white cover is provided to tap the phantom during off-periods to prevent water evaporation and changes in the liquid parameters. On the phantom top, three reference markers are provided to identify the phantom position with respect to the robot.

### <ELI4 Phantom >

The ELI4 phantom is intended for compliance testing of handheld and body-mounted wireless devices in the frequency range of 30MHz to 6 GHz. ELI4 is fully compatible with the latest draft of the standard IEC 62209-2 and all known tissue simulating liquids.

ELI4 has been optimized regarding its performance and can be integrated into a SPEAG standard phantom table. A cover prevents evaporation of the liquid. Reference markings on the phantom allow installation of the complete setup, including all predefined phantom positions and measurement grids, by teaching three points. The phantom can be used with the following tissue simulating liquids:

- Water-sugar based liquids can be left permanently in the phantom. Always cover the liquid if the system is not in use; otherwise the parameters will change due to water evaporation.
- DGBE based liquids should be used with care. As DGBE is a softener for most plastics, the liquid should be taken out of the phantom and the phantom should be dried when the system is not in use (desirable at least once a week).
- Do not use other organic solvents without previously testing the phantom resistiveness



**Fig.8.8 Photo of ELI4 Phantom**



## 8.7 Device Holder

### <Device Holder for SAM Twin Phantom>

The SAR in the phantom is approximately inversely proportional to the square of the distance between the source and the liquid surface. For a source at 5 mm distance, a positioning uncertainty of  $\pm 0.5$  mm would produce a SAR uncertainty of  $\pm 20$  %. Accurate device positioning is therefore crucial for accurate and repeatable measurements. The positions in which the devices must be measured are defined by the standards. The DASY device holder is designed to cope with different positions given in the standard. It has two scales for the device rotation (with respect to the body axis) and the device inclination (with respect to the line between the ear reference points). The rotation center for both scales is the ear reference point (ERP).

Thus the device needs no repositioning when changing the angles.

The DASY device holder is constructed of low-low POM material having the following dielectric parameters: relative permittivity  $\epsilon = 3$  and loss tangent  $\delta = 0.02$ . The amount of dielectric material has been reduced in the closest vicinity of the device, since measurements have suggested that the influence of the clamp on the test results could thus be lowered.



**Fig. 8.9 Photo of Device Holder**

## 8.8 Data storage and Evaluation

### ➤ Data Storage

The DASY software stores the assessed data from the data acquisition electronics as raw data (in microvolt readings from the probe sensors), together with all the necessary software parameters for the data evaluation (probe calibration data, liquid parameters and device frequency and modulation data) in measurement files. The post-processing software evaluates the desired unit and format for output each time the data is visualized or exported. This allows verifications of the complete software setup even after the measurement and allows correction of erroneous parameter settings. For example, if a measurement has been performed with an incorrect crest factor parameter in the device setup, the parameter can be corrected afterwards and the data can be reevaluated.

The measured data can be visualized or exported in different units or formats, depending on the selected probe type (e.g., [V/m], [mW/g]). Some of these units are not available in certain situations or give meaningless results, e.g., a SAR-output in a non-lose media, will always be zero. Raw data can also be exported to perform the evaluation with other software packages.

### ➤ Data Evaluation

The DASY post-processing software (SEMCAD) automatically executes the following procedures to calculate the field units from the microvolt readings at the probe connector. The parameters used in the evaluation are stored in the configuration modules of the software:

|                           |                           |   |
|---------------------------|---------------------------|---|
| <b>Probe Parameters:</b>  | - Sensitivity             | Norm <sub>i</sub> , a <sub>i0</sub> , a <sub>i1</sub> , a <sub>i2</sub> |
|                           | - Conversion              | ConvF <sub>i</sub>  |
|                           | - Diode compression point | dcp <sub>i</sub>  |
| <b>Device Parameters:</b> | - Frequency               | f   |
|                           | - Crest                   | cf  |
| <b>Media Parameters:</b>  | - Conductivity            | σ   |
|                           | - Density                 | ρ   |

These parameters must be set correctly in the software. They can be found in the component documents or they can be imported into the software from the configuration files issued for the DASY components. In the direct measuring mode of the multi-meter option, the parameters of the actual system setup are used. In the scan visualization and export modes, the parameters stored in the corresponding document files are used.

The first step of the evaluation is a linearization of the filtered input signal to account for the compression characteristics of the detector diode. The compensation depends on the input signal, the diode type and the DC-transmission factor from the diode to the evaluation electronics. If the exciting field is pulsed, the crest factor of the signal must be known to correctly compensate for peak power.

The formula for each channel can be given as:

$$V_i = U_i + U_i^2 \cdot \frac{cf}{dcp_i}$$

With  $V_i$  = compensated signal of channel i, (i = x, y, z)  
 $U_i$  = input signal of channel i, (i = x, y, z)  
 cf = crest factor of exciting field (DASY parameter)  
 $dcp_i$  = diode compression point (DASY parameter)

From the compensated input signals, the primary field data for each channel can be evaluated:

$$\text{E- Field Probes: } E_i = \sqrt{\frac{V_i}{\text{Norm}_i \cdot \text{ConvF}}}$$

$$\text{H-Field Probes: } H_i = \sqrt{V_i} \cdot \frac{a_{i0} + a_{i1}f + a_{i2}f^2}{f}$$

With  $V_i$  = compensated signal of channel i, (i = x, y, z)  
 $\text{Norm}_i$  = sensor sensitivity of channel i, (i = x, y, z),  $\mu\text{V}/(\text{V/m})^2$   
 $\text{ConvF}$  = sensitivity enhancement in solution  
 $a_{ij}$  = sensor sensitivity factors for H-field probes  
 f = carrier frequency (GHz)  
 $E_i$  = electric field strength of channel i in V/m  
 $H_i$  = magnetic field strength of channel i in A/m

The RSS value of the field components gives the total field strength (Hermitian magnitude):

$$E_{tot} = \sqrt{E_x^2 + E_y^2 + E_z^2}$$

The primary field data are used to calculate the derived field units.

$$SAR = E_{tot}^2 \cdot \frac{\sigma}{\rho \cdot 1000}$$

With SAR = local specific absorption rate in mW/g  
 $E_{tot}$  = total field strength in V/m  
 $\sigma$  = conductivity in (mho/m) or (Siemens/m)  
 $\rho$  = equipment tissue density in  $\text{g/cm}^3$

Note that the density is set to 1, to account for actual head tissue density rather than the density of the tissue simulating liquid.



## 8.9 Test Equipment List

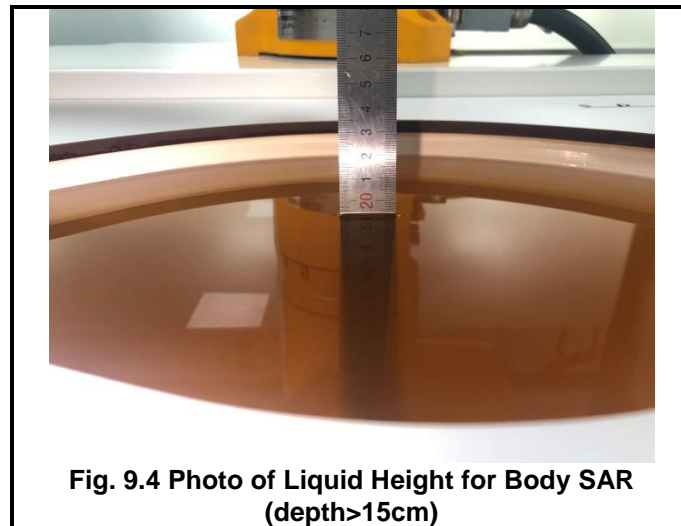
| Manufacturer | Equipment Description                | Model            | Management Number      | Cal. Information |            |
|--------------|--------------------------------------|------------------|------------------------|------------------|------------|
|              |                                      |                  |                        | Last Cal.        | Due Date   |
| SPEAG        | 835MHz System Validation Kit         | D835V2           | WXJ023-1               | 06.08.2022       | 06.07.2025 |
| SPEAG        | Data Acquisition Electronics         | DAE4             | WXJ021-1               | 03.26.2024       | 03.25.2025 |
| SPEAG        | Dosimetric E-Field Probe             | EX3DV4           | WXJ022                 | 03.20.2024       | 03.19.2025 |
| SPEAG        | DASY 52 Measurement Software         | DASY 52          | Version 52.10.4.1527   | N.C.R            | N.C.R      |
| SPEAG        | DASY 52 File Conversion Software     | SEMCAD X         | Version 14.6.14 (7501) | N.C.R            | N.C.R      |
| SPEAG        | Robot Controller                     | CS8Cspeag-TX60   | WXG021-1               | N.C.R            | N.C.R      |
| SPEAG        | Phantom                              | Twin SAM Phantom | WXG021-4               | N.C.R            | N.C.R      |
| SPEAG        | Phantom                              | ELI V5.0         | WXG021-5               | N.C.R            | N.C.R      |
| SPEAG        | Phone Positioner                     | N/A              | WXG021-6               | N.C.R            | N.C.R      |
| St?ubli      | Robot                                | TX60Lspeag       | WXG021-3               | N.C.R            | N.C.R      |
| R&S          | Universal Radio Communication Tester | CMU200           | WXJ008-2               | 12.27.2023       | 12.26.2025 |
| KEYSIGHT     | Network Analyzer                     | E5071C           | WXJ091                 | 12.27.2023       | 12.26.2024 |
| KEYSIGHT     | EPM Series Power Meter               | N1914A           | WXJ075                 | 06.11.2024       | 06.10.2025 |
| KEYSIGHT     | E-Series Power Sensor                | E9300H           | WXJ075-1               | 06.11.2024       | 06.10.2025 |
| KEYSIGHT     | E-Series Power Sensor                | E9300H           | WXJ075-2               | 06.11.2024       | 06.10.2025 |
| KEYSIGHT     | Signal Generator                     | N5173B           | WXJ006-3               | 09.09.2024       | 09.08.2025 |
| Huber Suhner | RF Cable                             | SUCOFLEX         | WXG008-13              | See Note 3       |            |
| Huber Suhner | RF Cable                             | SUCOFLEX         | WXG008-14              | See Note 3       |            |
| Huber Suhner | RF Cable                             | SUCOFLEX         | WXG008-15              | See Note 3       |            |
| Weinschel    | Attenuator                           | 23-3-34          | WXG008-16              | See Note 3       |            |
| Anritsu      | Directional Coupler                  | MP654A           | WXG008-17              | See Note 3       |            |
| SPEAG        | Dielectric Assessment Kit            | 3.5 Probe        | WXG008-7               | See Note 4       |            |
| SPEAG        | DAK Measurement Software             | DAK              | Version: DAK 3.5       | N.C.R            |            |
| TXC          | Broadband Amplifier                  | BBA018000        | WXG008-11              | See Note 5       |            |

### Note:

1. The calibration certificate of DASY can be referred to appendix C of this report.
2. Referring to KDB 865664 D01v01r04, the dipole calibration interval can be extended to 3 years with justification. The dipoles are also not physically damaged, or repaired during the interval.
3. The Insertion Loss calibration of Dual Directional Coupler and Attenuator were characterized via the network analyzer and compensated during system check.
4. The dielectric probe kit was calibrated via the network analyzer, with the specified procedure (calibrated in pure water) and calibration kit (standard) short circuit, before the dielectric measurement. The specific procedure and calibration kit are provided by Speag.
5. In system check we need to monitor the level on the power meter, and adjust the power amplifier level to have precise power level to the dipole; the measured SAR will be normalized to 1 W input power according to the ratio of 1 W to the input power to the dipole. For system check, the calibration of the power amplifier is deemed not critically required for correct measurement; the power meter is critical and we do have calibration for it
6. Attenuator insertion loss is calibrated by the network Analyzer, which the calibration is valid, before system check.
7. N.C.R means No Calibration Requirement.

## 9 Tissue Simulating Liquids

For the measurement of the field distribution inside the SAM phantom with DASY, the phantom must be filled with around 25 liters of homogeneous body tissue simulating liquid. For body SAR testing, the liquid height from the center of the flat phantom to liquid top surface is larger than 15 cm, which is shown in Fig. 9.1.



The relative permittivity and conductivity of the tissue material should be within  $\pm 5\%$  of the values given in the table below recommended by the FCC OET 65 supplement C and RSS 102 Issue 5.

| Target Frequency (MHz) | $\epsilon_r$ | $\sigma(\text{S/m})$ |
|------------------------|--------------|----------------------|
| 150                    | 52.3         | 0.76                 |
| 300                    | 45.3         | 0.87                 |
| 450                    | 43.5         | 0.87                 |
| 835                    | 41.5         | 0.90                 |
| 900                    | 41.5         | 0.97                 |
| 915                    | 41.5         | 0.98                 |
| 1450                   | 40.5         | 1.20                 |
| 1610                   | 40.3         | 1.29                 |
| 1800-2000              | 40.0         | 1.40                 |
| 2450                   | 39.2         | 1.80                 |
| 3000                   | 38.5         | 2.40                 |
| 5800                   | 35.3         | 5.27                 |

( $\epsilon_r$  = relative permittivity,  $\sigma$  = conductivity and  $\rho = 1000 \text{ kg/m}^3$ )

The dielectric parameters of liquids were verified prior to the SAR evaluation using a Speag Dielectric Probe Kit and an Agilent Network Analyzer.

The following table shows the measuring results for simulating liquid.

| Frequency (MHz) | Liquid Temp. (°C) | Conductivity ( $\sigma$ ) | Permittivity ( $\epsilon_r$ ) | Conductivity Target( $\sigma$ ) | Permittivity Target( $\epsilon_r$ ) | Delta ( $\sigma$ )% | Delta ( $\epsilon_r$ )% | Limit (%) | Date (mm/dd/yy) |
|-----------------|-------------------|---------------------------|-------------------------------|---------------------------------|-------------------------------------|---------------------|-------------------------|-----------|-----------------|
| 835             | 23.0              | 0.91                      | 41.37                         | 0.90                            | 41.50                               | 1.11                | -0.31                   | ±5        | 2024/11/13      |

## 10 SAR System Verification

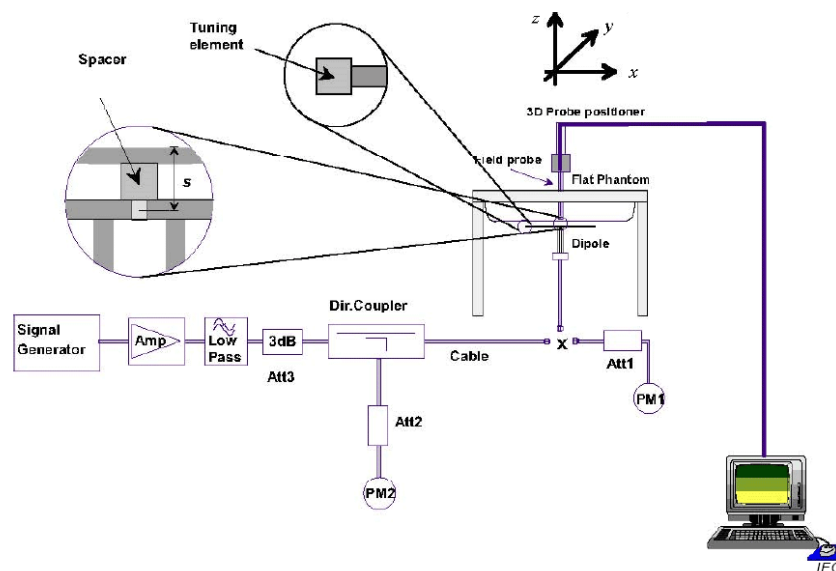
Each DASY system is equipped with one or more system validation kits. These units, together with the predefined measurement procedures within the DASY software, enable the user to conduct the system performance check and system validation. System validation kit includes a dipole, tripod holder to fix it underneath the flat phantom and a corresponding distance holder.

### ➤ Purpose of System Performance check

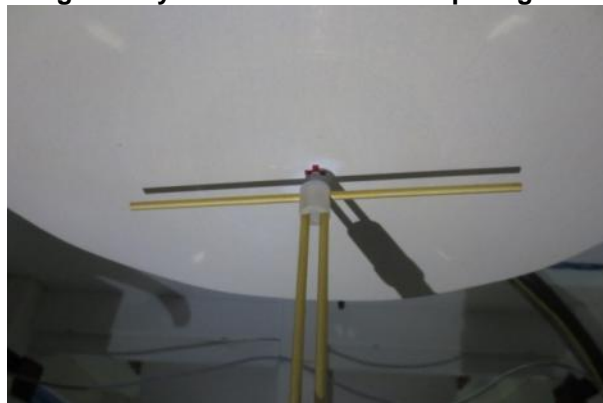
The system performance check verifies that the system operates within its specifications. System and operator errors can be detected and corrected. It is recommended that the system performance check be performed prior to any usage of the system in order to guarantee reproducible results. The system performance check uses normal SAR measurements in a simplified setup with a well characterized source. This setup was selected to give a high sensitivity to all parameters that might fail or vary over time. The system check does not intend to replace the calibration of the components, but indicates situations where the system uncertainty is exceeded due to drift or failure.

## ➤ System Setup

In the simplified setup for system evaluation, the EUT is replaced by a calibrated dipole and the power source is replaced by a continuous wave that comes from a signal generator. The calibrated dipole must be placed beneath the flat phantom section of the SAM twin phantom with the correct distance holder. The distance holder should touch the phantom surface with a light pressure at the reference marking and be oriented parallel to the long side of the phantom. The equipment setup is shown below:



### Fig.10.1 System Verification Setup Diagram



**Fig.10.2 Photo of Dipole setup**

## ➤ System Verification Results

Comparing to the original SAR value provided by SPEAG, the verification data should be within its specification of 10%. The table as below indicates the system performance check can meet the variation criterion and the plots can be referred to Appendix C of this report.

| Date<br>(yy/mm/dd) | Frequency<br>(MHz) | Power fed onto<br>dipole<br>(mW) | Measured 10g<br>SAR<br>(W/kg) | Normalized<br>to 1W 10g<br>SAR<br>(W/kg) | 1W<br>Target 10g<br>SAR<br>(W/kg) | Deviation<br>(%) |
|--------------------|--------------------|----------------------------------|-------------------------------|--|-----------------------------------|------------------|
| 2024/11/13         | 835                | 80                               | 0.492                         | 6.15                                     | 6.20                              | -0.81            |

## 11 EUT Testing Position

This EUT was tested in six different positions. They are Front/Back/Left Side/Right Side/Top Side/Bottom Side of the EUT with phantom 0 mm gap, as illustrated below, please refer to Appendix B for the test setup photos.

### 11.1 Extremity SAR Configurations

- To position the device parallel to the phantom surface with either keypad up or down.
- To adjust the device parallel to the flat phantom.
- To adjust the distance between the device surface and the flat phantom to 0 mm or holster surface and the flat phantom to 0 mm.

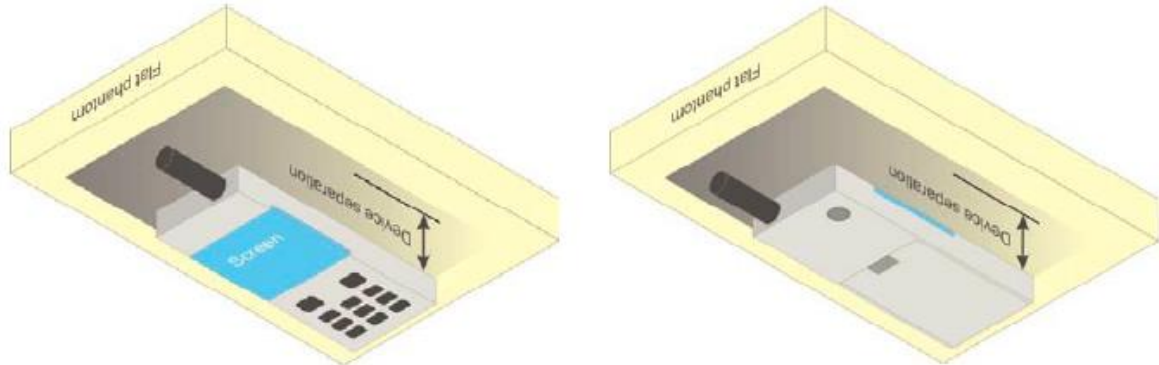


Fig.11.5 Illustration for Extremity SAR Position

## 12 Measurement Procedures

The measurement procedures are as below:

<Conducted power measurement>

- For WWAN power measurement, use base station simulator to configure EUT WWAN transition in conducted connection with RF cable, at maximum power in each supported wireless interface and frequency band.
- Read the WWAN RF power level from the base station simulator.
- For WLAN/BT power measurement, use engineering software to configure EUT WLAN/BT continuously transmission, at maximum RF power in each supported wireless interface and frequency band.
- Connect EUT RF port through RF cable to the power meter or spectrum analyzer, and measure WLAN/BT output power.

<Conducted power measurement>

- Use base station simulator to configure EUT WWAN transmission in radiated connection, and engineering software to configure EUT WLAN/BT continuously transmission, at maximum RF power, in the highest power channel.
- Place the EUT in positions as Appendix B demonstrates.
- Set scan area, grid size and other setting on the DASY software.
- Measure SAR results for the highest power channel on each testing position.
- Find out the largest SAR result on these testing positions of each band.
- Measure SAR results for other channels in worst SAR testing position if the Reported SAR or highest power channel is larger than 0.8 W/kg.

According to the test standard, the recommended procedure for assessing the peak spatial-average SAR value consists of the following steps:

- Power reference measurement
- Area scan
- Zoom scan
- Power drift measurement

### 12.1 Spatial Peak SAR Evaluation

The procedure for spatial peak SAR evaluation has been implemented according to the test standard. It can be conducted for 1g and 10g, as well as for user-specific masses. The DASY software includes all numerical procedures necessary to evaluate the spatial peak SAR value.

The base for the evaluation is a “cube” measurement. The measured volume must include the 1g and 10 g cubes with the highest averaged SAR values. For that purpose, the center of the measured volume is aligned to the interpolated peak SAR value of a previously performed area scan.

The entire evaluation of the spatial peak values is performed within the post-processing engine (SEMCAD). The system always gives the maximum values for 1g and 10g cubes. The algorithm to find the cube with highest averaged SAR is divided into the following stages:

- Extraction of the measured data (grid and values) from the Zoom Scan.
- Calculation of the SAR value at every measurement point based on all stored data (A/D values and measurement parameters).
- Generation of a high-resolution mesh within the measured volume.
- Interpolation of all measured values from the measurement grid to the high-resolution grid
- Extrapolation of the entire 3-D field distribution to the phantom surface over the distance from sensor to surface
- Calculation of the averaged SAR within masses of 1g and 10g.



## 12.2 Power Reference Measurement

The Power Reference Measurement and Power Drift Measurement are for monitoring the power drift of the device under test in the batch process. The minimum distance of probe sensors to surface determines the closest measurement point to phantom surface. This distance cannot be smaller than the distance of sensor calibration points to probe tip as defined in the probe properties.

## 12.3 Area & Zoom Scan Procedures

First Area Scan is used to locate the approximate location(s) of the local peak SAR value(s). The measurement grid within an Area Scan is defined by the grid extent, grid step size and grid offset. Next, in order to determine the EM field distribution in a three-dimensional spatial extension, Zoom Scan is required. The Zoom Scan is performed around the highest E-field value to determine the averaged SAR-distribution over 10g. Area scan and zoom scan resolution setting follows KDB 865664 D01v01r04 quoted below.

|   |                                    |  | $\leq 3$ GHz   | $> 3$ GHz   |
|---|------------------------------------|--|--|---|
| Maximum distance from closest measurement point (geometric center of probe sensors) to phantom surface  |                                    |  | $5 \pm 1$ mm   | $\frac{1}{2} \cdot \delta \cdot \ln(2) \pm 0.5$ mm                            |
| Maximum probe angle from probe axis to phantom surface normal at the measurement location   |                                    |  | $30^{\circ} \pm 1^{\circ}$   | $20^{\circ} \pm 1^{\circ}$  |
| Maximum area scan spatial resolution: $\Delta x_{Area}$ , $\Delta y_{Area}$   |                                    |  | $\leq 2$ GHz: $\leq 15$ mm<br>2 – 3 GHz: $\leq 12$ mm  | 3 – 4 GHz: $\leq 12$ mm<br>4 – 6 GHz: $\leq 10$ mm                            |
|   |                                    |  | When the x or y dimension of the test device, in the measurement plane orientation, is smaller than the above, the measurement resolution must be $\leq$ the corresponding x or y dimension of the test device with at least one measurement point on the test device. |   |
| Maximum zoom scan spatial resolution: $\Delta x_{Zoom}$ , $\Delta y_{Zoom}$   |                                    |  | $\leq 2$ GHz: $\leq 8$ mm<br>2 – 3 GHz: $\leq 5$ mm*   | 3 – 4 GHz: $\leq 5$ mm*<br>4 – 6 GHz: $\leq 4$ mm*                            |
| Maximum zoom scan spatial resolution, normal to phantom surface   | uniform grid: $\Delta z_{Zoom}(n)$ |  | $\leq 5$ mm  | 3 – 4 GHz: $\leq 4$ mm<br>4 – 5 GHz: $\leq 3$ mm<br>5 – 6 GHz: $\leq 2$ mm    |
|   | graded grid                        | $\Delta z_{Zoom}(1)$ : between 1 <sup>st</sup> two points closest to phantom surface | $\leq 4$ mm  | 3 – 4 GHz: $\leq 3$ mm<br>4 – 5 GHz: $\leq 2.5$ mm<br>5 – 6 GHz: $\leq 2$ mm  |
|   |                                    | $\Delta z_{Zoom}(n>1)$ : between subsequent points                                   | $\leq 1.5 \cdot \Delta z_{Zoom}(n-1)$  |   |
| Minimum zoom scan volume  | x, y, z                            |  | $\geq 30$ mm   | 3 – 4 GHz: $\geq 28$ mm<br>4 – 5 GHz: $\geq 25$ mm<br>5 – 6 GHz: $\geq 22$ mm |
| Note: $\delta$ is the penetration depth of a plane-wave at normal incidence to the tissue medium; see draft standard IEEE P1528-2011 for details.   |                                    |  |  |   |
| * When zoom scan is required and the <u>reported</u> SAR from the <u>area scan based 1-g SAR estimation</u> procedures of KDB 447498 is $\leq 1.4$ W/kg, $\leq 8$ mm, $\leq 7$ mm and $\leq 5$ mm zoom scan resolution may be applied, respectively, for 2 GHz to 3 GHz, 3 GHz to 4 GHz and 4 GHz to 6 GHz. |                                    |  |  |   |



## **12.4 Volume Scan Procedures**

The volume scan is used for assess overlapping SAR distributions for antennas transmitting in different frequency bands. It is equivalent to an oversized zoom scan used in standalone measurements. The measurement volume will be used to enclose all the simultaneous transmitting antennas. For antennas transmitting simultaneously in different frequency bands, the volume scan is measured separately in each frequency band. In order to sum correctly to compute the 1g aggregate SAR, the EUT remain in the same test position for all measurements and all volume scan use the same spatial resolution and grid spacing. When all volume scan were completed, the software, SEMCAD post-processor scan combine and subsequently superpose these measurement data to calculating the multiband SAR.

## **12.5 SAR Averaged Methods**

In DASY, the interpolation and extrapolation are both based on the modified Quadratic Shepard's method. The interpolation scheme combines a least-square fitted function method and a weighted average method which are the two basic types of computational interpolation and approximation.

Extrapolation routines are used to obtain SAR values between the lowest measurement points and the inner phantom surface. The extrapolation distance is determined by the surface detection distance and the probe sensor offset. The uncertainty increases with the extrapolation distance. To keep the uncertainty within 1% for the 1g and 10g cubes, the extrapolation distance should not be larger than 5 mm.

## **12.6 Power Drift Monitoring**

All SAR testing is under the EUT install full charged battery and transmit maximum output power. In DASY measurement software, the power reference measurement and power drift measurement procedures are used for monitoring the power drift of EUT during SAR test. Both these procedures measure the field at a specified reference position before and after the SAR testing. The software will calculate the field difference in dB. If the power drifts more than 5%, the SAR will be retested.

## 12.7 RFID Conducted Power

| Average Power (dBm) |                 |       |
|---------------------|-----------------|-------|
| Channel             | Frequency (MHz) | FHSS  |
| CH 00               | 907.095         | 22.23 |
| CH 12               | 916.395         | 22.21 |
| CH 24               | 923.835         | 22.10 |

## 12.8 BLE Conducted Power

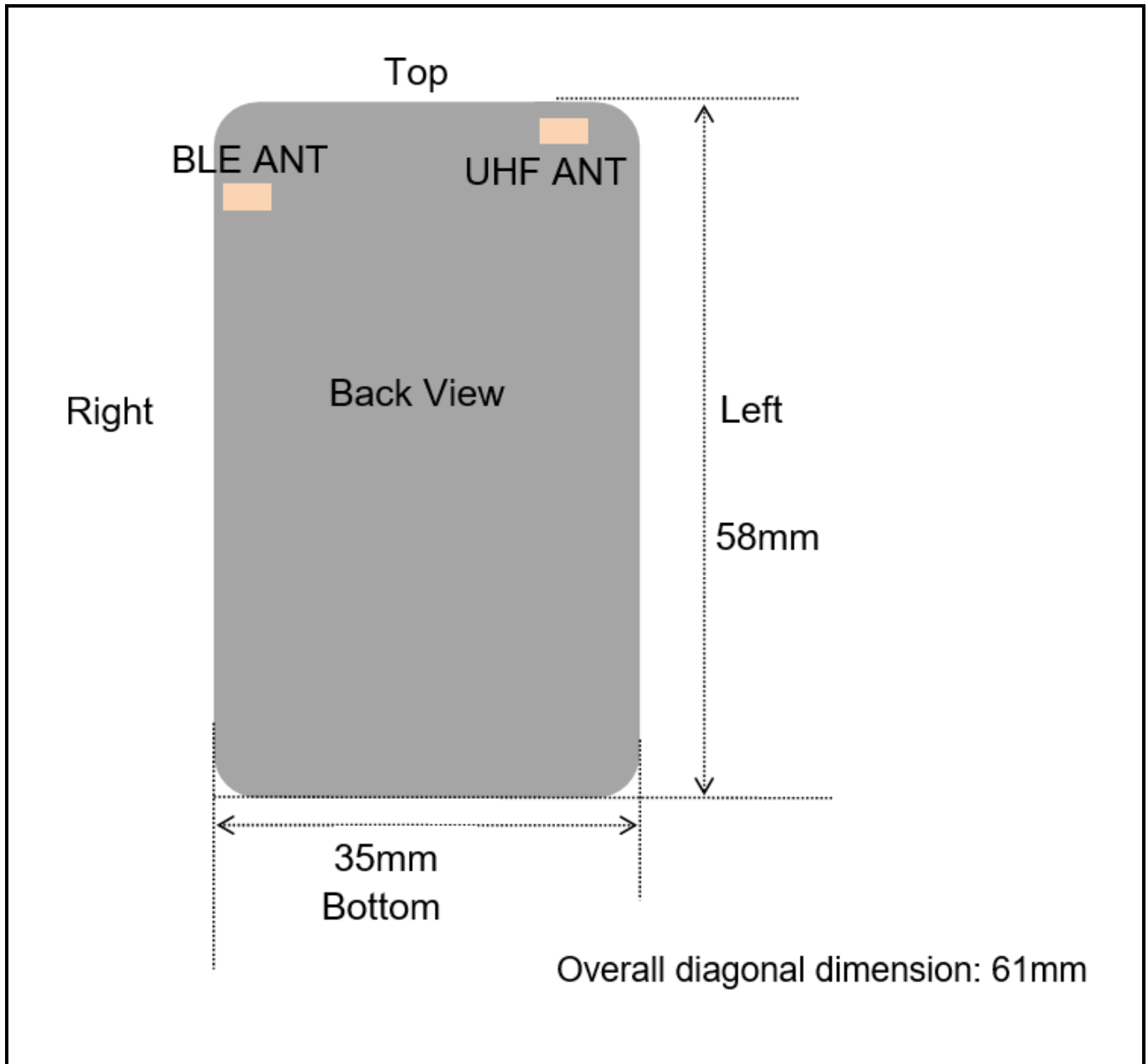
| Average Power (dBm) |                 |       |       |
|---------------------|-----------------|-------|-------|
| Channel             | Frequency (MHz) | 1M    | 2M    |
| CH 00               | 2402            | -5.92 | -5.92 |
| CH 39               | 2442            | -6.55 | -6.55 |
| CH 78               | 2480            | -7.14 | -7.15 |

### Note:

1. The output power of all data rate were pre-scan, just the worst case of all mode were shown in report.

## 13 Exposure Positions Consideration

### 13.1 EUT Antenna Locations



**Fig.14.1 EUT Antenna Locations**

*Note: This antenna diagram is only used as a reference for the distance from the antenna to each edge. For the specific shape of the antenna, please refer to the physical photo.*

## 14 SAR Test Results Summary

### 14.1 Standalone Extremity SAR

➤ RFID Extremity SAR

| Plot No.  | Band/Mode | Test Position | CH. | Freq. (MHz) | Ave. Power (dBm)                                   | Power Drift (dB) | Tune-Up Limit (dBm) | Meas. SAR <sub>10g</sub> (W/kg) | Scaling Factor | Reported SAR <sub>10g</sub> (W/kg) |
|---|-----------|---------------|-----|-------------|--|------------------|---------------------|---------------------------------|----------------|------------------------------------|
|   | RFID      | Front         | 0   | 907.095     | 22.23  | -0.03            | 22.5                | 0.732                           | 1.064          | 0.779                              |
|   | RFID      | Back          | 0   | 907.095     | 22.23  | -0.02            | 22.5                | 0.583                           | 1.064          | 0.620                              |
|   | RFID      | Left          | 0   | 907.095     | 22.23  | 0.06             | 22.5                | 0.312                           | 1.064          | 0.332                              |
|   | RFID      | Right         | 0   | 907.095     | 22.23  | 0.09             | 22.5                | 0.036                           | 1.064          | 0.039                              |
|   | RFID      | Bottom        | 0   | 907.095     | 22.23  | 0.04             | 22.5                | 0.008                           | 1.064          | 0.009                              |
|   | RFID      | Top           | 0   | 907.095     | 22.23  | 0.03             | 22.5                | 0.184                           | 1.064          | 0.196                              |
|   | RFID      | Front         | 12  | 916.395     | 22.21  | -0.04            | 22.5                | 0.629                           | 1.069          | 0.672                              |
| 1   | RFID      | Front         | 24  | 923.835     | 22.10  | -0.02            | 22.5                | <b>1.060</b>                    | 1.096          | 1.162                              |
| <b>ANSI / IEEE C95.1 – SAFETY LIMIT</b><br><b>Spatial Peak</b><br><b>Uncontrolled Exposure/General Population</b> |           |               |     |             | <b>4.0 W/kg (mW/g)</b><br><b>Averaged over 10g</b> |                  |                     |                                 |                |                                    |

## 14.2 Multi-Band Simultaneous Transmission Considerations

### ➤ Simultaneous Transmission Capabilities

According to FCC KDB Publication 447498 D04v01, transmitters are considered to be transmitting simultaneously when there is overlapping transmission, with the exception of transmissions during network hand-offs with maximum hand-off duration less than 30 seconds. Possible transmission paths for the EUT are shown in below Figure and are color-coded to indicate communication modes which share the same path. Modes which share the same transmission path cannot transmit simultaneously with one another.

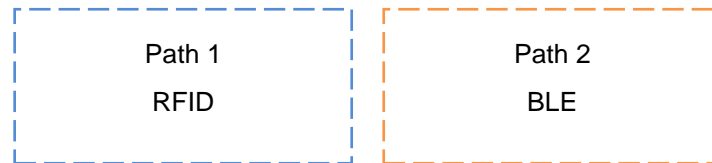


Fig.15.1 Simultaneous Transmission Paths

### ➤ Simultaneous Transmission Procedures

This device contains transmitters that may operate simultaneously. Therefore simultaneous transmission analysis is required. Per FCC KDB 447498 D04v01, simultaneous transmission SAR test exclusion may be applied when the sum of the 10-g SAR for all the simultaneous transmitting antennas in a specific physical test configuration is  $\leq 4.0$  W/kg. When standalone SAR is not required to be measured, per FCC KDB 447498 D04v01 Appendix E, E.1), the following equation must be used to estimate the standalone 10g SAR for simultaneous transmission assessment involving that transmitter.

$$SAR_{est} = 4.0 \cdot P_{ant} / P_{th} [W/kg].$$

| Mode | Max. Power (dBm) | Max. Power (mW) | Exposure Position    | Extremity |
|------|------------------|-----------------|----------------------|-----------|
| BLE  | -5.92            | 0.26            | Estimated SAR (W/kg) | 0.126     |

Note:

1. Per KDB 447498 D04v01 section 2.1.2: 1-mW Test Exemption,  $P_{th} = 8.23$  mW.

### ➤ Multi-Band simultaneous Transmission Consideration

| Simultaneous Transmission Consideration | Position  | Applicable Combination |
|---|-----------|------------------------|
|   | Extremity | RFID+BLE               |

Note:

1. The Report SAR summation is calculated based on the same configuration and test position.
2. Per KDB 447498 D04v01, simultaneous transmission SAR is compliant if,
  - i. Scalar SAR summation  $< 4.0$  W/kg.
  - ii.  $SPLSR = (SAR_1 + SAR_2)^{1.5} / (\min. \text{ separation distance, mm})$ , and the peak separation distance is determined from the square root of  $[(x_1 - x_2)^2 + (y_1 - y_2)^2 + (z_1 - z_2)^2]$ , where  $(x_1, y_1, z_1)$  and  $(x_2, y_2, z_2)$  are the coordinates of the extrapolated peak SAR locations in the zoom scan. If  $SPLSR \leq 0.04$ , simultaneously transmission SAR measurement is not necessary.
  - iii. Simultaneously transmission SAR measurement, and the Reported multi-band SAR  $< 4.0$  W/kg.

### 14.3 SAR Simultaneous Transmission Analysis

#### ➤ Simultaneous Transmission

| Position  |        | Standalone SAR <sub>10g</sub> (W/kg) |       | Σ SAR <sub>10g</sub> (W/kg) |
|-----------|--------|--------------------------------------|-------|-----------------------------|
|           |        | 1                                    | 2     | 1+2                         |
|           |        | RFID                                 | BLE   |                             |
| Extremity | Front  | 1.162                                | 0.126 | 1.288                       |
|           | Back   | 0.620                                | 0.126 | 0.746                       |
|           | Left   | 0.332                                | 0.126 | 0.458                       |
|           | Right  | 0.039                                | 0.126 | 0.165                       |
|           | Top    | 0.196                                | 0.126 | 0.322                       |
|           | Bottom | 0.009                                | 0.126 | 0.135                       |

#### ➤ Simultaneous Transmission Conclusion

The above numerical summed SAR results for all the case simultaneous transmission conditions were below the SAR limit. Therefore, the above analysis is sufficient to determine that simultaneous transmission cases will not exceed the SAR limit and therefore no measured volumetric simultaneous SAR summation is required per FCC KDB Publication 447498 D04v01.

#### **14.4 Measurement Conclusion**

The SAR evaluation indicates that the EUT complies with the RF radiation exposure limits of the FCC and Industry Canada, with respect to all parameters subject to this test. These measurements were taken to simulate the RF effects of RF exposure under worst-case conditions. Precise laboratory measures were taken to assure repeatability of the tests. The results and statements relate only to the item(s) tested. Please note that the absorption and distribution of electromagnetic energy in the body are very complex phenomena that depend on the mass, shape, and size of the body, the orientation of the body with respect to the field vectors, and the electrical properties of both the body and the environment. Other variables that may play a substantial role in possible biological effects are those that characterize the environment (e.g. ambient temperature, air velocity, relative humidity, and body insulation) and those that characterize the individual (e.g. age, gender, activity level, debilitation, or disease). Because various factors may interact with one another to vary the specific biological outcome of an exposure to electromagnetic fields, any protection guide should consider maximal amplification of biological effects as a result of field-body interactions, environmental conditions, and physiological variables.

## **15 Reference**

- [1]. FCC 47 CFR Part 2 “Frequency Allocations and Radio Treaty Matters; General Rules and Regulations”
- [2]. ANSI/IEEE Std. C95.1-1992, “IEEE Standard for Safety Levels with Respect to Human Exposure to Radio Frequency Electromagnetic Fields, 3 kHz to 300 GHz”, September 1992
- [3]. IEC/IEEE 62209-1528, “Measurement procedure for the assessment of specific absorption rate of human exposure to radio frequency fields from hand-held and body-mounted wireless communication devices – Part 1528: Human models, instrumentation, and procedures (Frequency range of 4 MHz to 10 GHz)”, October 2020
- [4]. SPEAG DASY52 System Handbook
- [5]. FCC KDB 447498 D04 v01, “RF EXPOSURE PROCEDURES AND EQUIPMENT AUTHORIZATION POLICIES FOR MOBILE AND PORTABLE DEVICES”, November 2021
- [6]. FCC KDB 865664 D01 v01r04, “SAR MEASUREMENT REQUIREMENTS FOR 100 MHz TO 6 GHz”, August 2015



## **Appendix A: Plots of SAR System Check**

Test Laboratory: JYTSZ

Date: 11.13.2024

**DUT: Dipole 835 MHz; Type: D835V2; Serial: SN:4D154**

Communication System: UID 0, CW (0); Frequency: 835 MHz; Duty Cycle: 1:1

Medium parameters used (interpolated):  $f = 835 \text{ MHz}$ ;  $\sigma = 0.91 \text{ S/m}$ ;  $\epsilon_r = 41.371$ ;  $\rho = 1000 \text{ kg/m}^3$

Phantom section: Flat Section

DASY5 Configuration:

- Probe: EX3DV4 - SN7601; ConvF(10.3, 10.3, 10.3) @ 835 MHz; Calibrated: 01.29.2024
- Sensor-Surface: 1.4mm (Mechanical Surface Detection)
- Electronics: DAE4 Sn1373; Calibrated: 11.27.2023
- Phantom: SAM-Twin; Type: QD 000 P40 CD; Serial: 1885
- Measurement SW: DASY52, Version 52.10 (4); SEMCAD X Version 14.6.14 (7501)

**System Performance Check at Frequency 835 MHz Head Tissue/d=15mm, Pin=80 mW, dist=1.4mm (EX-Probe)/Area Scan (41x141x1):** Interpolated grid:  $dx=1.500 \text{ mm}$ ,  $dy=1.500 \text{ mm}$

Maximum value of SAR (interpolated) = 1.08 W/kg

**System Performance Check at Frequency 835 MHz Head Tissue/d=15mm, Pin=80 mW, dist=1.4mm (EX-Probe)/Zoom Scan (7x7x7) (5x5x7)/Cube 0:** Measurement grid:  $dx=8\text{mm}$ ,  $dy=8\text{mm}$ ,  $dz=5\text{mm}$

Reference Value = 34.92 V/m; Power Drift = -0.08 dB

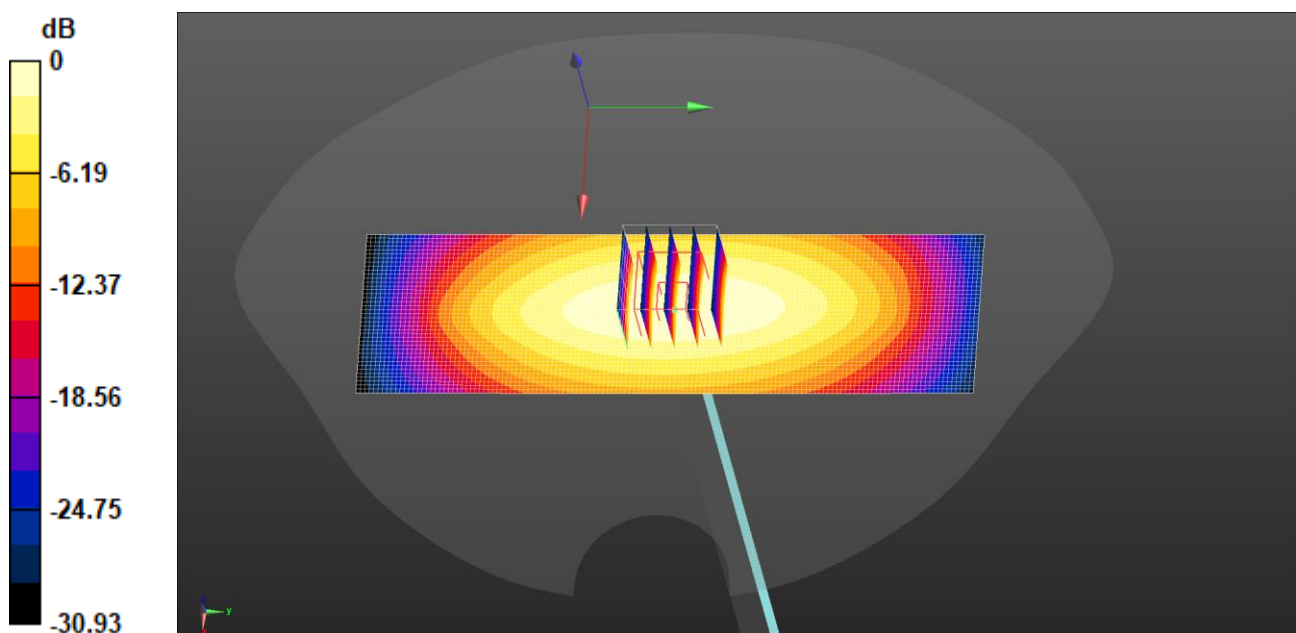
Peak SAR (extrapolated) = 1.25 W/kg

**SAR(1 g) = 0.783 W/kg; SAR(10 g) = 0.492 W/kg**

Smallest distance from peaks to all points 3 dB below = 16.1 mm

Ratio of SAR at M2 to SAR at M1 = 61%

Maximum value of SAR (measured) = 1.06 W/kg



0 dB = 1.08 W/kg = 0.33 dBW/kg

## **Appendix B: Plots of SAR Test Data**

Test Laboratory: JYTSZ

Date: 11.13.2024

**DUT: 7858V; Type: 7858V; Serial: SZR122401307-1**

Communication System: UID 0, RFID (0); Frequency: 923.835 MHz; Duty Cycle: 1:1

Medium parameters used (interpolated):  $f = 923.835$  MHz;  $\sigma = 0.956$  S/m;  $\epsilon_r = 41.092$ ;  $\rho = 1000$  kg/m<sup>3</sup>

Phantom section: Flat Section

DASY5 Configuration:

- Probe: EX3DV4 - SN3924; ConvF(9.75, 9.75, 9.75) @ 923.835 MHz; Calibrated: 03.20.2024
- Sensor-Surface: 1.4mm (Mechanical Surface Detection)
- Electronics: DAE4 Sn1452; Calibrated: 03.26.2024
- Phantom: SAM 5.0; Type: QD000P40CD; Serial: TP:1765
- Measurement SW: DASY52, Version 52.10 (4); SEMCAD X Version 14.6.14 (7501)

**RFID Body Front/High Channel/Area Scan (61x71x1):** Interpolated grid:  $dx=1.500$  mm,  $dy=1.500$  mm

Maximum value of SAR (interpolated) = 3.63 W/kg

**RFID Body Front/High Channel/Zoom Scan (5x5x7)/Cube 0:** Measurement grid:  $dx=8$ mm,  $dy=8$ mm,  $dz=5$ mm

Reference Value = 52.23 V/m; Power Drift = -0.02 dB

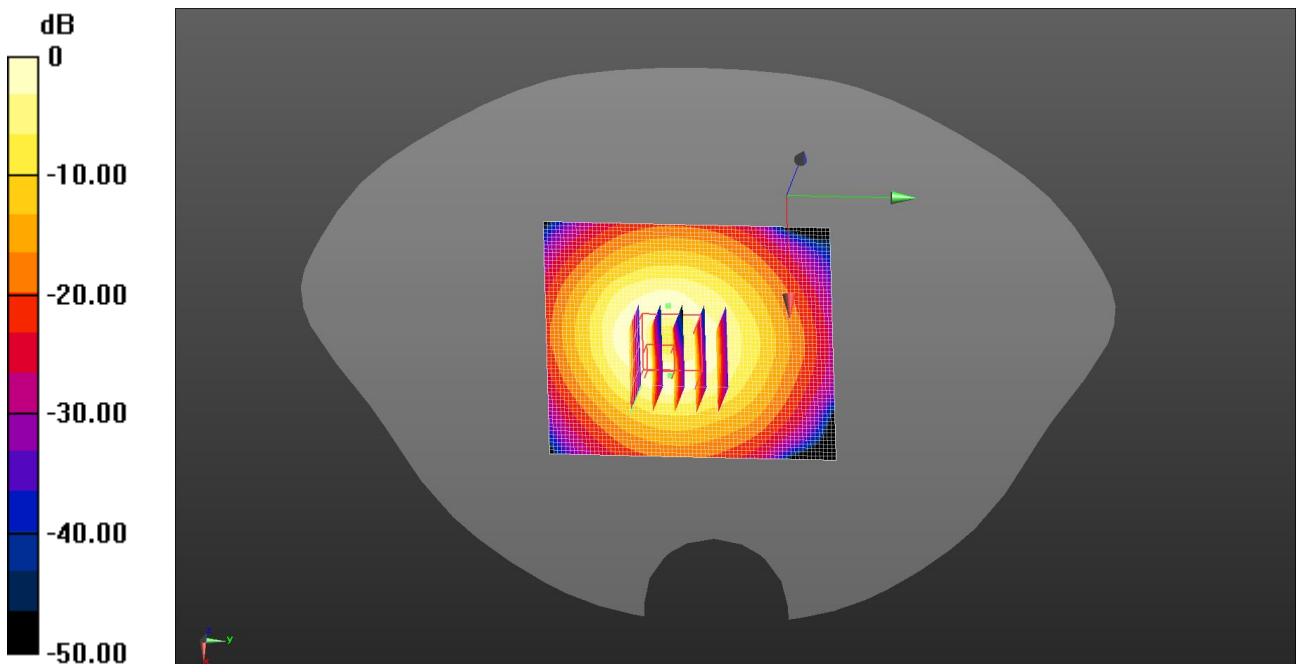
Peak SAR (extrapolated) = 8.38 W/kg

**SAR(1 g) = 2.32 W/kg; SAR(10 g) = 1.06 W/kg**

Smallest distance from peaks to all points 3 dB below = 6.4 mm

Ratio of SAR at M2 to SAR at M1 = 23.5%

Maximum value of SAR (measured) = 4.92 W/kg



$$0 \text{ dB} = 3.63 \text{ W/kg} = 5.60 \text{ dBW/kg}$$

-----End of Report-----