

G1919

iPad Pro皮套键盘

用户手册

注意：正确操作本产品，请仔细阅读用户手册。

● 键盘使用说明：

- 

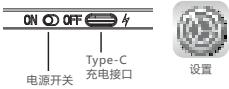
1. 打开键盘包，将iPad Pro平整放入卡扣内。
- 

2. 将平板固定好，如图所示。
- 


3. 对码，上电蓝灯亮，按Fn+C蓝灯闪进入设备可被搜索和对码状态。蓝牙当不使用键盘时，请关闭电源开关。
- 


4. 合上键盘包，iPad进入休眠状态。

● 蓝牙对码连接：

- 

1. 请打开位于键盘侧边缘的电源开关，蓝牙指示灯亮起，按Fn+C对码，您会看到蓝色蓝牙指示灯闪烁。

2. 打开平板，进入“设置”。
- 

3. 打开“蓝牙”，进入设备搜索模式。
- 














4. 直到发现“Bluetooth 5.1 Keyboard”，然后点击下一步。
- 

5. 提示联接配对成功，您可以舒适地使用您的键盘了。

多媒体功能

- | | | | |
|---|--|---|---|
|  主页 |  搜索 |  语言切换 |  截屏 |
|  软键盘 |  全选 |  复制 |  剪切 |
|  贴贴 |  上一曲 |  暂停/播放 |  下一曲 |
|  静音 |  音量减小 |  音量增大 |  锁屏 |
|  Fn + 向左选择 | |  Fn + 向右选择 | |

iOS 13.4.1 手势

- | | | |
|--|---|---|
|  单指点击 - 单击 (可自定义) |  单指点击 - 光标滑动 |  单指点击两次并拖拽 - 拖拽 |
|  双指点击 - 打开屏幕 (可自定义) |  双指上下滑动 - 滚动垂直滚动 |  双指左右滑动 - 屏幕左右滑动 |
|  双指分开/合拢 - 网页放大/缩小 |  三指点击 - 主屏幕 (可自定义) |  三指向上滑动 - 打开/隐藏底部应用程序栏 (Cmd+Alt+D) |
|  三指向下滑动 - 打开所有活动窗口 (两下主页键) |  三指向左滑动 - 向左切换活动窗口 (Cmd+Shift+Tab) |  三指向右滑动 - 向右切换活动窗口 (Cmd+Tab) |
|  四指点击 - 区域性解释 (Cmd+Shift+4) | | |

自定义的方法：设置-辅助功能-触控-辅助触控-设备-点击键盘配对名，然后对单指点/双指点/三指点进行功能自定义。

技术规格

- | | |
|------------------------|------------------|
| 键盘设备：应用于自带蓝牙驱动的设备 | 工作电压：3.3-4.2V |
| 键盘尺寸：251.3X182.2X6.0mm | 工作电流：<6.5mA |
| 电池容量：180mAh | 待机电流：2.5-3.1mA |
| 键盘布局：80键 | 休眠电流：<60μA |
| 重量：652g | 充电电流：150mA |
| 唤醒方式：按键唤醒 | 使用触摸板工作电流：<15 mA |

充电方法

- 当电量低于3.3V时，红色指示灯闪烁提醒您需要充电；充电时绿光常亮，充电结束后绿色指示灯熄灭。
- 提示：如果键盘长时间不使用，请您关闭电源开关，以便延长电池的使用时间。

故障分析

请与售后服务人员联系。

知识产权信息

未经卖方的许可，禁止复制本用户手册的内容。

安全提醒

请不要打开或修理该设备，请不要在潮湿的环境使用该设备。请用干布擦拭该设备。

质保条款

本设备提供自购买之日起 1 年的有限产品硬件保修服务。

键盘保养

- 请勿将设备暴露于液体和潮湿的环境中或使其淋雨，请勿在浴缸、水槽、桑拿房、游泳池或蒸汽房附近使用。
- 请勿将设备暴露于过高或过低的温度条件下。
- 请勿长时间放置在阳光直射的地方。
- 请勿靠近明火，如烹饪用炉、蜡烛或者壁炉。
- 避免使用锋利器物刮擦产品，及时给产品进行充电或更换干电池以保证正常使用。

常见问题解答

- 平板无法连接蓝牙键盘？
 - 请先检查蓝牙键盘是否有进入配对状态，然后再打开平板电脑蓝牙搜索设备进行连接。
 - 检查蓝牙键盘电量是否充足，电量不足也会导致无法连接，请将蓝牙键盘充电后再使用。
- 键盘指示灯在使用途中红灯闪烁？

键盘指示灯在使用途中红灯闪烁，表示电池即将没电，请尽快将键盘充电。
- 设备显示蓝牙键盘断开连接？

蓝牙键盘在一段时间内不使用，设备为了省电将自动关闭蓝牙功能，按键盘任意键盘唤醒，蓝牙连接将自动恢复。

保修卡

用户填写资料

公司或个人全称 _____

通讯地址 _____

电话 _____ 邮编 _____

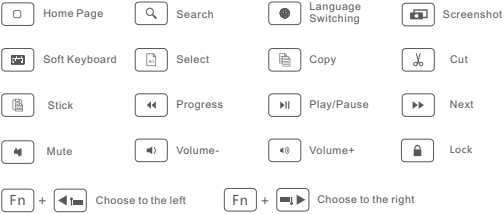
所购产品名称及型号 _____

购买日期 _____

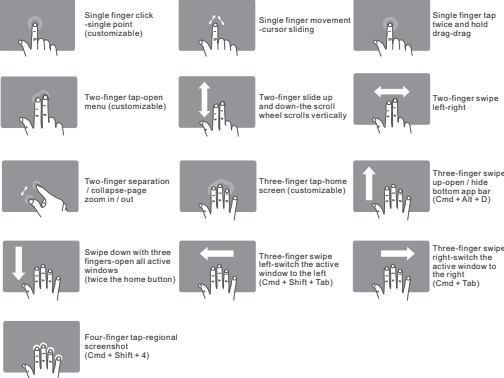
本有限质保不涵盖由于以下原因导致的问题或损坏：
(1) 意外事件、误用、操作不当或任何未授权的维修、改装或者拆卸；
(2) 操作或维护不当，使用过程中违反产品说明或连接不适当的电源；
(3) 或者使用并非本公司提供的消耗品（如备用电池），但适用法律禁止此类限制的情况除外。



Multimedia function

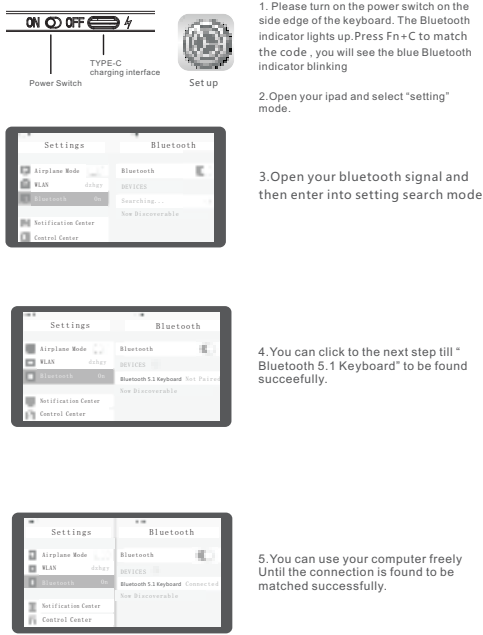


iOS 13.4.1 gesture

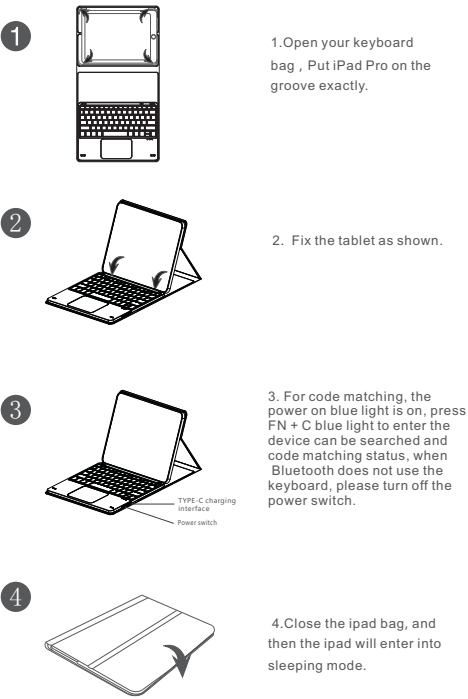


Customizing method: Settings-Accessibility-Touch-Assistive Touch-Device-click on the keyboard pairing name, and then customize the function for single finger/dual finger/three finger click.

• IOS Operating System Instruction:



• Keyboard Operation Instruction:



G1919

Bluetooth Keyboard

User's Manual

Note: Please read the user manual carefully before you start using this product.

Warranty Card

User information

Company or personage full name

Contact address

TEL

Zip

The purchased product name and model NO.

Purchased date

This reason due to the product broken and damage is not include on the warranty.
(1) accidents, misuse, improper operation, or any unauthorized maintenance, alteration, or disassembly;
(2) improper operation or maintenance, violation of product instructions or improper connection of power during use;
(3) Or use consumables (such as spare batteries) that are not provided by the company but applicable laws. Except where such restrictions are prohibited.



FAQ

- 1.The tablet PC can't connect the BT keyboard
1) At first check the BT keyboard is into match code state, then open the table PC Bluetooth searching.
2) Checking the BT keyboard Battery is enough, the battery low is also lead to can't connect, you need charge.
- 2.The keyboard indication light always flashing when use?
Keyboard indication always flashing when use, is means the keyboard will be no power ,please charge the power as soon as possible.
- 3.The table PC display BT keyboard is disconnect?
The BT keyboard will into dormant to save the battery after some time later no use; press any key the BT keyboard will be awoken and working.

Troubleshooting

Please contact the after-sales service.

Copyright

It is forbidden to reproduce any part of this manual without the permission of seller.

Safety instructions

Do not open or repair this device, Do not use the device in a damp environment. Clean the device with a dry cloth.

Warranty

The device is provided with one-year limited hardware warranty from the purchase day.

Keyboard Maintenance

- 1.Please keep the keyboard away from liquid or humid environment, saunas, swimming pool, steam room and don't let the keyboard get wet in the rain.
- 2.Please don't expose the keyboard at too high or too low temperature condition.
- 3.Please don't put keyboard under sun for a long time.
- 4.Please don't put keyboard close to the flame, such as cooking stoves, candles or fireplace.
- 5.Avoid sharp objects scratching products, timely to recharge products to ensure the normal use.

Technical Specifications

- Keyboard devices: use HID coordination Bluetooth devices
- Keyboard Size: 251.3 X 182.2 X 6.0mm
- Battery Capacity: 180mAH
- Keyboard layout : 80keys
- Weight : 652g
- Working current with touchpad: <15 mA
- Working voltage: 3.3-4.2 V
- Working current: <6.5 mA
- Standby current: 2.5-3.1 mA
- Sleep current: <60 μ A
- Charging current: 150 mA
- Awaken way : Press key

Charging Method

1.When the voltage indicates below 3.3 V, the red light will blink and it reminds you of recharging. The light will show on green when in the charging period. When you finish charging, the green light will not flash.

Remarks: In order to prolong the life of battery, please switch off the power when you do not use the keyboard for a long time.

FCC Statement

Changes or modifications not expressly approved by the party responsible for compliance could void the user's authority to operate the equipment.

This equipment has been tested and found to comply with the limits for a Class B digital device, pursuant to Part 15 of the FCC Rules. These limits are designed to provide reasonable protection against harmful interference in a residential installation. This equipment generates uses and can radiate radio frequency energy and, if not installed and used in accordance with the instructions, may cause harmful interference to radio communications. However, there is no guarantee that interference will not occur in a particular installation. If this equipment does cause harmful interference to radio or television reception, which can be determined by turning the equipment off and on, the user is encouraged to try to correct the interference by one or more of the following measures:

- Reorient or relocate the receiving antenna.
- Increase the separation between the equipment and receiver.
- Connect the equipment into an outlet on a circuit different from that to which the receiver is connected.
- Consult the dealer or an experienced radio/TV technician for help

This device complies with part 15 of the FCC rules. Operation is subject to the following two conditions (1)this device may not cause harmful interference, and (2) this device must accept any interference received, including interference that may cause undesired operation.

CE Statement

Herby,Shenzhen DZH Industrial Co., Ltd declares that this Bluetooth Keyboard, G1919 is in compliance with the essential requirements and other relevant provisions of Directive 2014/53/EU.

In accordance with Article 10(2) and Article 10(10), this product allowed to be used in all EU member states.

Use the Bluetooth Keyboard in the environment with the temperature between 0 C and 50 C.

Risk of explosion if battery is replaced by an incorrect type. Dispose of used batteries according to the instructions.

Operation Frequency: 2402MHz~2480MHz

Max output power: BT: 0.0003W

Manufacturer: Shenzhen DZH Industrial Co., Ltd

Address: 3th Floor, Yituo Mike Industrial A building, Bu Yong Industrial D zone, Shaoling, Shenzhen, China

Tel: 86-0755-29951078

Fax: 86-0755-29951079

E-mail: ligh@dzhgy.com

DECLARATION OF CONFORMITY

I hereby declare that the product:

Product: Bluetooth Keyboard
Model No.: G1919
Trade Mark: Herby
Hardware Version: Ver 03
Software Version: V1.2

Accessories:
Battery Information:
Model: 301950
Specification: 3.7V, 0.000Wh/300mAh
Manufacturer: SHENZHEN TIANYUO BATTERY CO., LTD.
(Name of product, type or model, trade or serial number)

satisfies all the technical regulations applicable to the product within the scope of Council Directives (2014/53/EU), (2014/55/EU) and (2014/56/EU) and declare that the same application has not been lodged with any other notified body.

EN 62479:2010
EN 62479-2:2010
EN 62479-2:2010+A11:2017
EN 62479-2:2010+A11+A12:2017
EN 62479-2:2010+A11+A12+A13:2017
EN 62479-2:2010+A11+A12+A13+A14:2017
EN 62479-2:2010+A11+A12+A13+A14+A15:2017

(If not of signature, stamp, etc.)
All essential radio test notes have been carried out.

NOTIFIED BODY: NCCOM Labs Inc
- Address:
171 Boulder Court
Folsom, California 95688
USA
Identification Number: 2160

MANUFACTURER or AUTHORIZED REPRESENTATIVE
- Address:
Shenzhen DZH Industrial Co., Ltd
3th Floor, Yituo Mike Industrial A building, Bu Yong Industrial D zone, Shaoling,
Shenzhen, China

This declaration is issued under the sole responsibility of the manufacturer and, if applicable, its authorized representative.

Point of contact:
Jesse Li 862755-29951078/0755-29951079
(Name, telephone and fax number)

2024-10-29 09:18
(Place date of issue)


Signature
Jesse Li, Manager
(Name and title in bold & clear)