

Test Laboratory: Sporton International Inc.

Device Under Test Properties

Manufacturer	Dimensions [mm]	IMEI	DUT Type
SPEAG	100.0 x 100.0 x 100.0		System Verification Source

Exposure Conditions

Phantom Section	Position, Test Distance [mm]	Frequency [MHz]	Conversion Factor
5G	FRONT, 5.55	30000.0	1.0

Hardware Setup

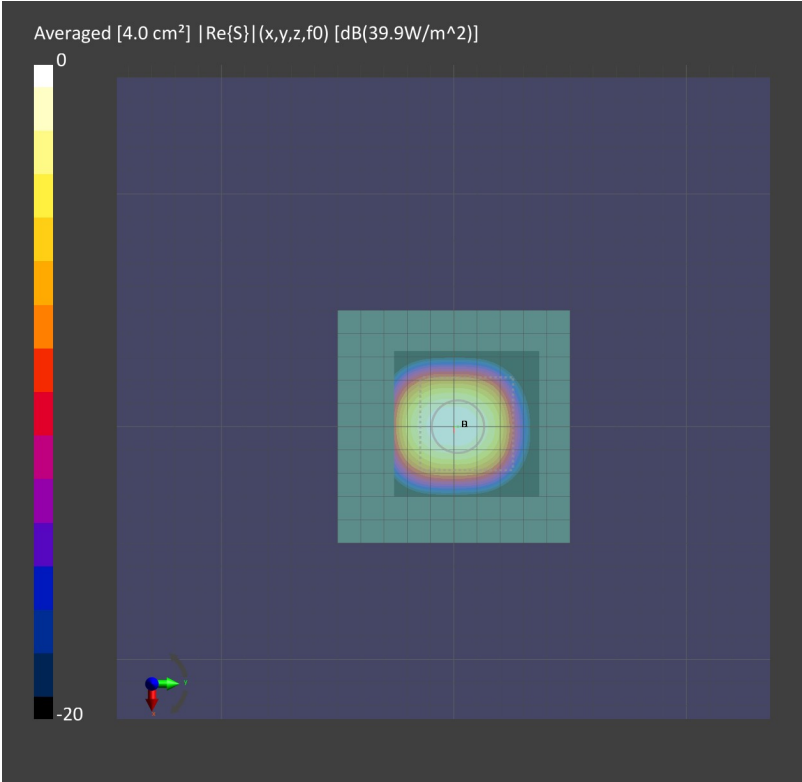
Phantom	Medium	Probe, Calibration Date	DAE, Calibration Date
5G Cover – xxxx	Air –	EUmmWV3 – SN9424, 2019–03–19	DAE4 Sn1424, 2019–01–24

Scans Setup

Grid Extents [mm]	60.0 x 60.0
Grid Steps [lambda]	0.25 x 0.25
Sensor Surface [mm]	5.55

Measurement Results

Date	2019–05–01, 00:16
Avg. Area [cm²]	4.00
S _{avg inc} [W/m²]	39.4
S _{avg tot} [W/m²]	39.9
S _{peak} [W/m²]	57.1
E _{peak} [V/m]	146
H _{peak} [A/m]	0.401
Power Drift [dB]	–0.10



Test Laboratory: Sporton International Inc.

Device Under Test Properties

Manufacturer	Dimensions [mm]	IMEI	DUT Type
SPEAG	100.0 x 100.0 x 100.0		System Verification Source

Exposure Conditions

Phantom Section	Position, Test Distance [mm]	Frequency [MHz]	Conversion Factor
5G	FRONT, 5.55	30000.0	1.0

Hardware Setup

Phantom	Medium	Probe, Calibration Date	DAE, Calibration Date
5G Cover – xxxx	Air –	EUmmWV3 – SN9424, 2019–03–19	DAE4 Sn1424, 2019–01–24

Scans Setup

Grid Extents [mm]	60.0 x 60.0
Grid Steps [lambda]	0.25 x 0.25
Sensor Surface [mm]	5.55

Measurement Results

Date	2019–05–08, 00:44
Avg. Area [cm²]	4.00
S _{avg inc} [W/m²]	44.0
S _{avg tot} [W/m²]	44.8
S _{peak} [W/m²]	62.3
E _{peak} [V/m]	150
H _{peak} [A/m]	0.428
Power Drift [dB]	–0.14

