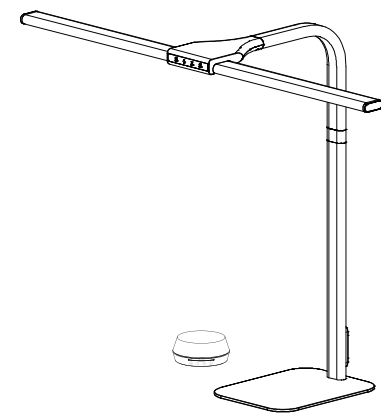


Architect LED Desk Lamp

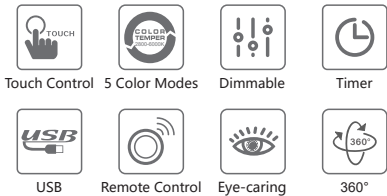
User Manual



Thank you for purchasing this product.
Please read this instruction carefully to
understand its features and safety cautions.

FEATURES

- 1. Sensitive Touch Control & Wireless Remote Control
- 2. 5 Lighting Modes & 7 Brightness Levels
- 3. 4 Timer Stop Options & Memory Function
- 4. Soft Light, No Flicker, Eye Protection
- 5. Adjustable Silicone gooseneck & Sturdy Base
- 6. Ultra-wide Angle Irradiation Range
- 7. Equipped with USB Charging Port



PARTS INDICATOR

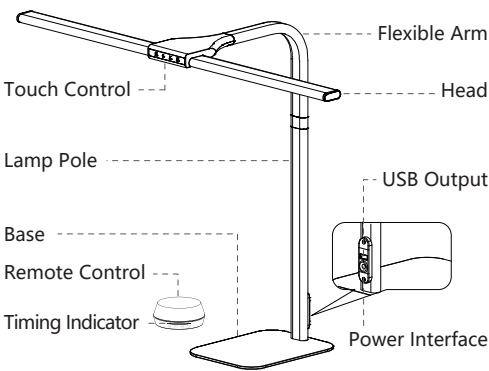


Table lamp normal use angle
Normal use angle range of lamp holder and lamp arm:
When adjusting the angle of the lamp head, press the base at the same time.
Note: The illustration is for reference only, please refer to the actual product for details

OPERATING INSTRUCTIONS



- 1. When the product is powered on, all white buttons will light up with low brightness, and the buttons will turn to high light when the light is turned on.
- 2. **ON/OFF Switch**
① Single touch to turn on/off the light.
② **Memory Function:** When powered on, it remembers the brightness and mode last used.
③ **Stop Timer:** Long press the switch for 2 seconds to turn on the 1 hour timer function, and long-press it again for 2 seconds to cancel the 1 hour timer function. (When entering the timing function, the backlight will exhale once every 2 seconds; if the timing is canceled, the backlight will always be on.)
- 3. **Brightness +/-:** When the light is on. click to adjust the brightness of the light. The brightness of the light can be adjusted in 7 steps and can not be cycled: 10%-25%-40%-55%-70%-85%-100%
- 4. **Mode Switch**
When the light is on, click to control the color temperature of the light, click continuously, the color temperature of the light will be adjusted from low to high in 5 steps, 2800K-3500K-4200K-5000K-6000K.

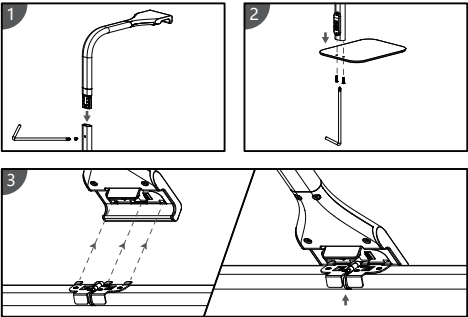
- 5. **Wireless Remote Control(Built in AAA battery *3)**
1. Single press the top cover to control the on/off light.
2. Rotate the top cover to adjust the brightness of the light steplessly. (Turn the remote control clockwise once to adjust to the brightest, and turn it counterclockwise to adjust to the darkest.)
3. Long press the top cover to adjust the 5 color temperatures (synchronized with the main light), each level of color temperature stays for 1.2 seconds and then goes to the next color temperature.

Timer on for remote control
1. Double-click and press the top cover to enter the timing selection mode, the timing indicator lights up and flashes, and rotate the top cover to select 4 timings: 30 minutes - 60 minutes - 90 minutes - 120 minutes. After selecting the timing, single press again to confirm, and the timing indicator will light up and stop flashing.The timing function is successfully turned on, and the touch switch button backlight of the desk lamp breathes synchronously for 2 seconds.
2. After the timing function is turned on, the indicator bar will turn off and dormant after 10 seconds. Slide the remote control at will, and the indicator bar will wake up and light up again. The indicator bar will go out one by one as the time decreases. When the timing ends, the indicator bar will all go out, and the main light will also be turned off at the same time.
Cancellation timing
When the timer is on, double-click the top cover of the remote control to cancel the timer. (The desk lamp touch switch button backlight synchronizes breathing for 2 seconds.)

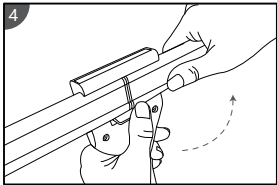
※ In special cases, if your remote control fails, it is recommended that you re-pair the remote control and the desk lamp. Methods as below:

- (1) Pairing of remote control and table lamp
In the state of power on but not turn on the light, long press the main light on/off switch for 5 seconds, the main light will light up and breathe flashing, it means enter the pairing mode, short press the remote control to start pairing, the main light will stop flashing if the pairing is successful. If there is no action within 30 seconds, the pairing mode will be exited and the main light will be off.
- (2) Low battery reminder
When the remote control is in low battery, the indicator light bar will keep flashing rapidly for three seconds and enter the low battery non-working state.

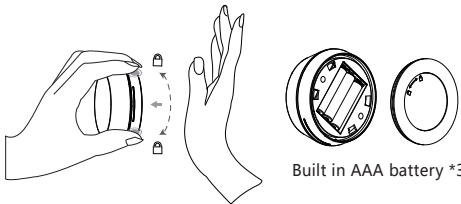
INSTALLATION DIAGRAM



Step 1: Insert the rear end of the lamp body into the upper end of the lamp pole and fasten it with screws.
Step 2: Align the bottom of the light pole with the two holes of the base, and then use a wrench to tighten the two screws.
Step 3: Unfold the folded light bar, align the four iron pieces on the back of the light bar with the card slot holes of the light head and insert it, and then press the lower part of the light bar into the groove.



Step 4: Insert the adapter, turn on the touch switch and start working.

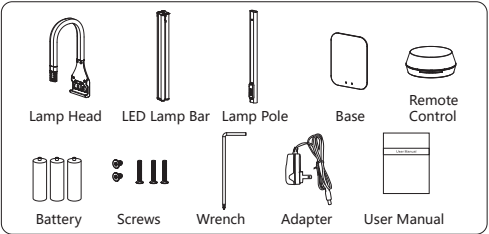


How to replace the battery of the remote control?
1. Hold the bottom cover of the remote control with one hand and the bottom cover of the remote control with the other palm, and rotate it in the direction. When you hear a click, you can remove the lower cover to replace the battery.
2. After placing the battery in place, put the lower cover into the bottom of the remote control, rotate it to the place, and it can be used normally after it is snapped in place.

SPECIFICATIONS

Item	LED Desk Lamp
LED Power	23W
Voltage	100-240V~50/60Hz
Adapter Output	12V=2A
USB Output	5V=1A
CCT	2800K/3500K/4200K 5000K/6000K
Lifespan	35000H
CRI	≥80Ra
Center luminance(40cm)	≥1000LUX
Material	Aluminum+Metal
Operating temperature	-10°~40°
Product size	660*193*753mm
N.W.	1740g
Colors	White/Black

PACKING LIST



Operation Cautions:

- 1. Do not wipe the lamps with highly volatile and highly corrosive liquids to avoid discoloration or damaged.
- 2. Please do not put the lamp on the high-temperature surfaces, and do not use it in flammable or humid environment, to avoid the breakdown, short circuit etc.
- 3. The external cable or the cord of the lamp should not be replaced.
- 4. The light source of this lamp is irreplaceable. When the light source expires, the entire luminaire shall be replaced.
- 5. When the lamp is working, do not look directly at the light source to avoid damage to eyesight.
- 6. The product has a battery. Please do not put it into the fire to avoid explosion.

FCC Warning Statement:

Changes or modifications not expressly approved by the party responsible for compliance could void the user's authority to operate the equipment. This equipment has been tested and found to comply with the limits for a Class B digital device, pursuant to Part 15 of the FCC Rules. These limits are designed to provide reasonable protection against harmful interference

in a residential installation. This equipment generates uses and can radiate radio frequency energy and, if not installed and used in accordance with the instructions, may cause harmful interference to radio communications. However, there is no guarantee that interference will not occur in a particular installation. If this equipment does cause harmful interference to radio or television reception, which can be determined by turning the equipment off and on, the user is encouraged to try to correct the interference by one or more of the following measures:
-- Reorient or relocate the receiving antenna.
-- Increase the separation between the equipment and receiver.
-- Connect the equipment into an outlet on a circuit different from that to which the receiver is connected.
-- Consult the dealer or an experienced radio/TV technician for help.

This device complies with part 15 of the FCC Rules. Operation is subject to the following two conditions: (1) This device may not cause harmful interference, and (2) this device must accept any interference received, including interference that may cause undesired operation.

