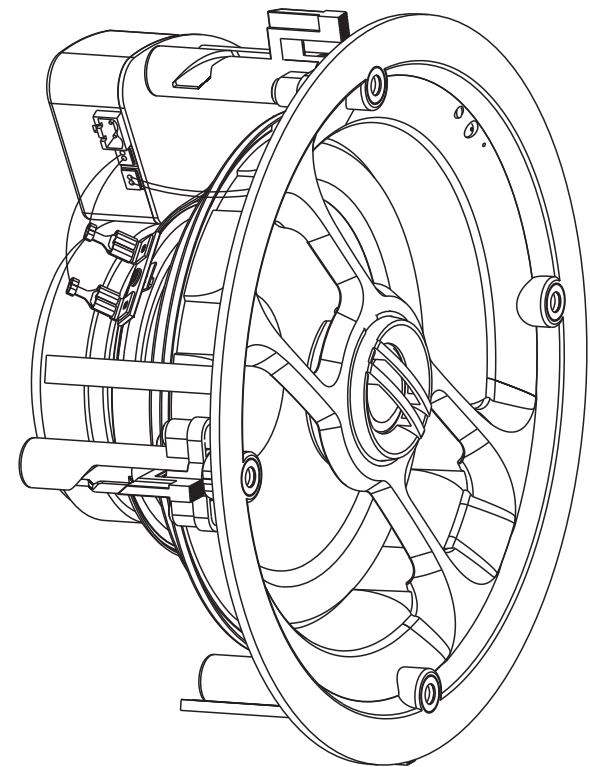


WI-FI CEILING SPEAKER

FLF-6WF/FLF-6WFS

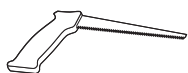


SAFETY INSTRUCTIONS

- 1) Please read the instructions carefully before installation and use. Keep the manual safe for future reference.
- 2) Prior to installing the speakers into any ceiling/wall, check the structure for weight bearing ability and avoid contact with any wiring or plumbing that might be behind the surface area. Installing on soft materials or in areas incapable of supporting the speakers' weight may cause personal injury or damage to the speaker.
- 3) Make sure the speaker is properly secured to the ceiling/wall. Please use the proper screws, bolts, or anchors. Failure to do so may cause the speaker to become unsecured and cause potential damages/injuries.
- 4) Damage to the woofer and tweeter may occur if the speaker is dropped or hit-resulting in no sound or distorted sound.
- 5) Never overdrive your speakers to the point of distortion and always reduce volume prior to switching input sources.
- 6) Use only approved and certified wiring in your installation, do not stretch or place the wire in contact with sharp objects.
- 7) Prior to removing cables ensure all power to your amplifier and other components is turned off.

PREPARATION

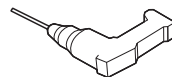
The hardware equipment listed below is needed to install the speaker.



Cutting Saw



Wire Strippers



Power Drill



Pencil



Tape Measure



Stud Finder



Safety Goggles

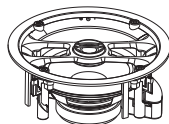


Ladder

PACKING LIST

Ensure that you have received all parts according to the component checklist prior to installation. If any parts are missing or faulty, contact your place of purchase for a replacement.

Model FLF-6WF Includes



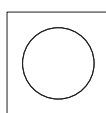
Active Speaker



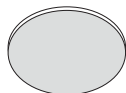
User Manual



Remote Control



Cutout Template



Grill

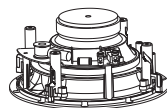


Power Cord with Adapter

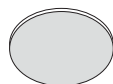


Installation Tool

Pair Model FLF-6WFS Also Includes

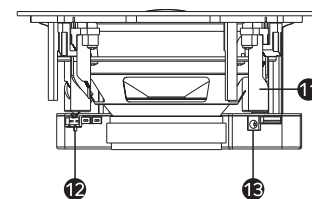
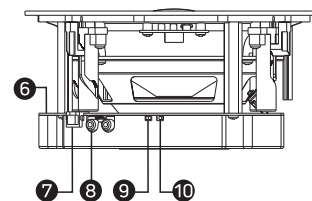
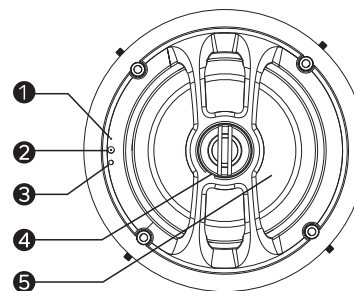


Passive Speaker

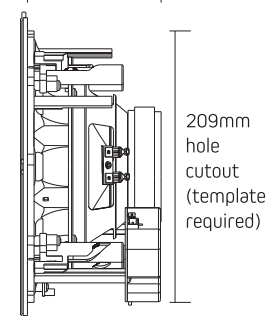


Grill

SPEAKER OVERVIEW



100mm ceiling depth required



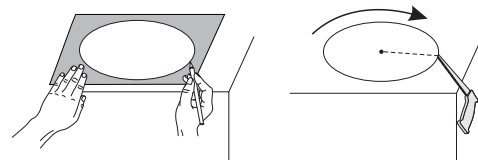
209mm hole cutout (template required)

- 1 LED Indicator**
Slowly flashing red: power on or reset.
Steady red: the Internet module is ready to connect.
Slowly flashing green: Wi-Fi is connecting.
Steady green: Wi-Fi is connected.
Steady cyan: Current audio source is RCA.
Flashing red, green and blue: The system is updating or resetting.
- 2 IR Receiver**
- 3 Reset Button**
1.Press it to switch play mode.
2.Press it for 3 seconds to start connecting to the Internet.
3.Press it for more than 10 seconds to start resetting with flashing red, green and blue light.
- 4 Pivoting Tweeter**
- 5 Woofer**
- 6 Built-in Amplifier**
- 7 RJ45 Ethernet Port**
- 8 RCA Jack**
- 9 Stereo/Mono Switch**
Switch to the "stereo" position when a passive speaker is attached. If not, keep in "mono" position.
- 10 Volume Limiter**
 - Limiter Enabled(50%): The volume will be limited to the max. output 15W@8Ω.
 - Limiter Disable(100%): The volume can be adjusted to the max. output 30W@8Ω.
- 11 Quick-Install Dog Leg Fixings**
- 12 Speaker Output**
- 13 Power Inlet (DC 24V/2.5A)**

INSTALLATION

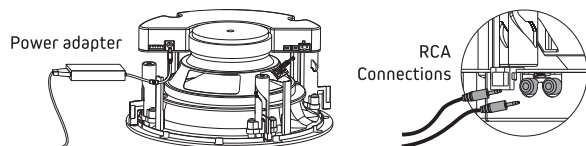
1. Cut the Speaker Hole

Position the cutout template where you are installing the speaker. Trace the template to mark out the speaker location with a pencil. Drill a pilot hole and cut all of the way around the circular outline with a cutting saw.



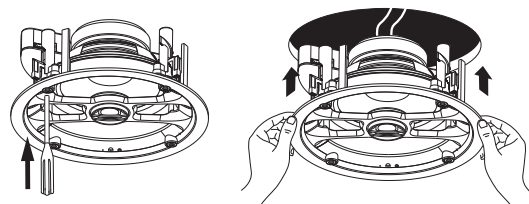
2. Wire the Speaker

Connect the adapter and RCA cables (if needed) to the corresponding ports.



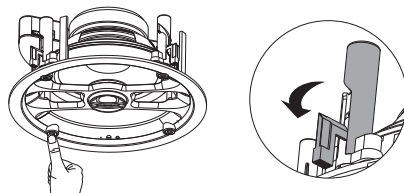
3. Install the Speaker

Adjust the dog leg with the installation tool as shown and insert the speaker into the hole.



4. Lock the Speaker

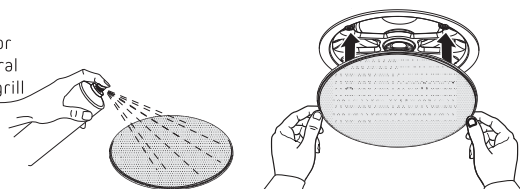
Lock the speaker by pressing the buttons located on the front face of the speaker and the dog leg will engage automatically.



5. Attach the Grill

Paint the speaker grill to match your room décor before you attach them to the speaker. As several magnets are on the speaker frame, attach the grill to the rim of the speaker directly. Ensure the grill is attached to the speaker securely to keep the grill from falling.

Note: Paints and spray gun are not included.



CONNECTION

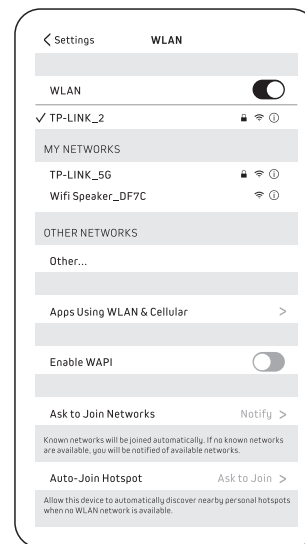
1) Wi-Fi Connecting

• Installing Controller App

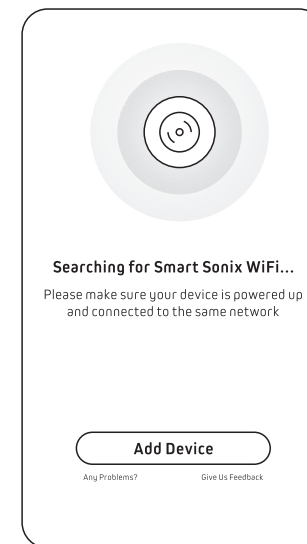
Please search "Smartsonix" to download controller app from Google Play (Android) or Apple App Store (iOS).

• Connecting the Wi-Fi Speaker

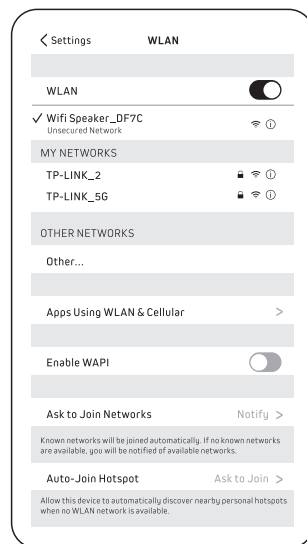
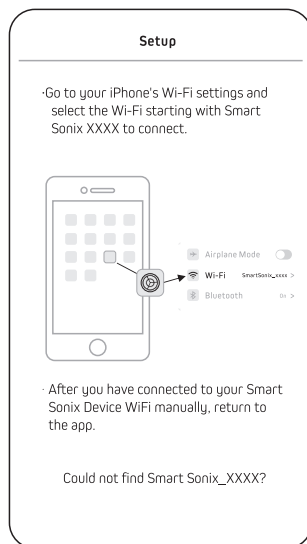
Ensure the speaker is connected to the power supply. Press the WPS button to start the speaker, then you will hear an instruction "Enter the setup mode, follow the instructions in the app to finish the setup", and the power indicator flashes green indicating that the speaker is ready to connect. Any wireless device (such as phones, tablets, laptops etc.) is available for connecting. Once connected successfully, the power indicator will become steady green.



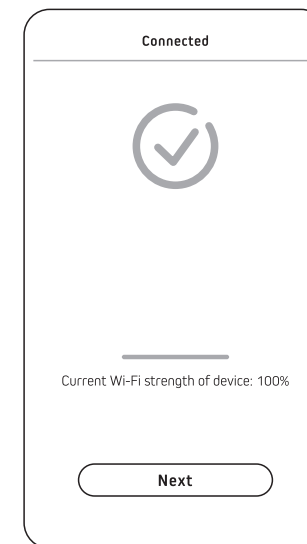
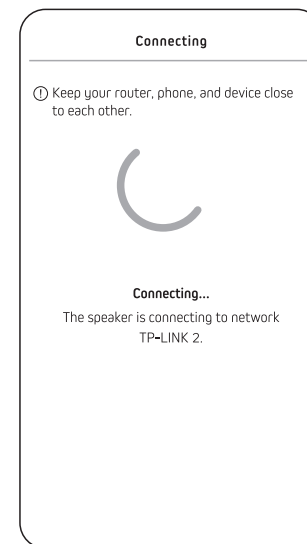
1. Turn on the Wi-Fi function and connect your phone to an available Wi-Fi network that you want.



2. Start the controller App Smart Sonix and click Add Device



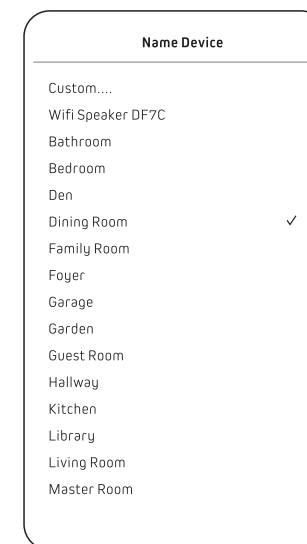
3. Follow the instructions in the app and get to your phone Wi-Fi settings to find the “Wi-Fi Speaker_****” in the network list and connect it.



5. Wait for a few seconds, the device will be connected to the Wi-Fi automatically. After connecting successfully, click Next.



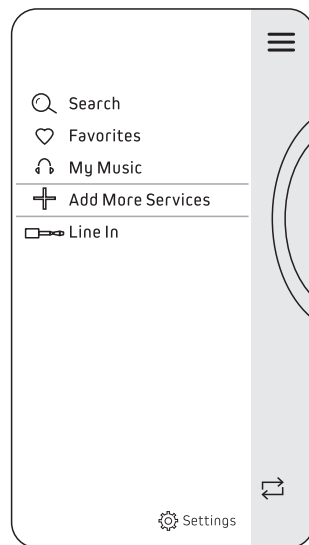
4. Return to the Smart Sonix. Choose the Wi-Fi the same as the one connected in step 1, type the password of the Wi-Fi and click Continue.



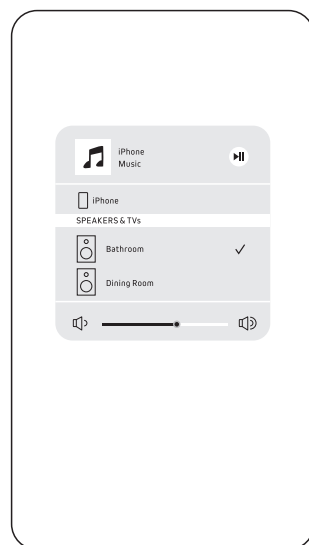
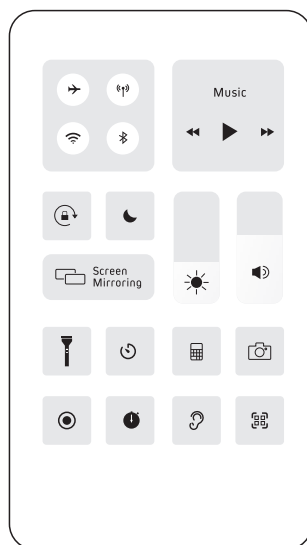
6. Name the device according to the room you will install and click >.



7. After finishing above settings, the Wi-Fi speaker will be in the device list, if you have more than one Wi-Fi speakers, press + to add devices and name them accordingly. After these steps, your multi-room music network is successfully established.



8. Choose a device and play a song in your phone to test whether the device works. If ok, testing is finished and you can forward to use the speaker.



Note:

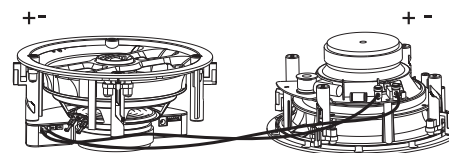
For iPhone, iPad and iMac smart device with iOS operating system, you can use the Wi-Fi speaker with Airplay function. Connect your device to the speaker Wi-Fi. In the pull-up or pull-down menu, click Airplay and choose the Wi-Fi speaker, then the sound can be steamed from your smart device. (Below is the operation interface of iOS13 system shown for your reference)

- When using an Ethernet cable to connect the speaker to the Router, the router must not have any special setting such as assigned IP or banned UPNP.
- The Wi-Fi ceiling speaker executes the Wi-Fi connecting first, when the speaker is powered up.
- Wi-Fi input has the priority when Wi-Fi input and RCA input are connected simultaneously.
- If the multi-room network fails the first time, restart all the equipment and then follow the above instructions. If trouble persists, press the "WPS button" located on the front of the speaker.
- The wireless connection will be lost if the distance between the speaker and the wireless device exceeds 80m(262.5 ft.).

2) RCA Connecting

1. Connect to the speaker using a dual RCA left/right cable.
2. Use the remote or SmartSonix APP to choose RCA mode. (Wi-Fi Input has the priority when 2 audio inputs are connected simultaneously.)
3. The RCA mode will be activated when the indicator light shows cyan.

3) Create Stereo Pair



1. Connect the passive speaker to the phoenix connector output.
2. Slide the mono-stereo switch ⑨ to the stereo position.

4) Switch 2 Audio Sources

• Wi-Fi Mode

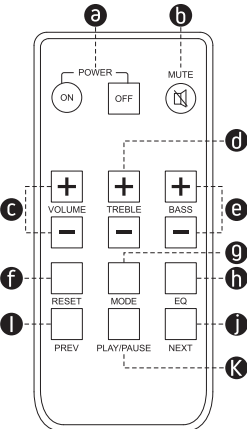
After connecting with Wi-Fi, use SmartSonix App to play audio and the speaker will automatically work in Wi-Fi mode. Or press "MODE" button of the remote for several times until the LED light turns green to switch audio source to "Wi-Fi".

• RCA Mode

Connect the speaker with an audio device like a phone or a computer by RCA cable, and press the "MODE" button on the remote several times until the LED light turns cyan, or use SmartSonix App to switch the audio source to "Line in" to switch to RCA mode.

5) Remote Control

Note: CR2025 lithium coin cell battery included.



The diagram shows a remote control with the following buttons and labels:

- a**: POWER (ON/OFF)
- b**: MUTE
- c**: VOLUME (+/-)
- d**: TREBLE (+/-)
- e**: BASS (+/-)
- f**: RESET
- g**: MODE
- h**: EQ
- i**: PREVIOUS (PREV)
- j**: NEXT (NEXT)
- k**: PLAY/PAUSE

a Power On/Off
Press to turn on/off the speaker.

b Mute
Press to turn off the sound temporary, and press again to turn the sound back.

c Volume+/-
Press to increase or decrease the sound level. You will hear a beep when the volume reaches the highest or lowest level.

d Treble +/-
Press to increase or decrease the high frequency response. You will hear a beep when the treble reaches the maximum or minimum value.

e Bass +/-
Press to increase or decrease the low frequency response. You will hear a beep when the bass reaches the maximum or minimum value.

f Reset
Press and hold to resume the speaker to default setting. All parameters will be reset to default values: volume is 26; sound effect is flat; treble and bass is 0.

g MODE
Press to switch the audio source. Press it several times until the LED light turns green (Wi-Fi mode) or cyan (RCA mode).

h EQ
Press to switch sound effects in order as Flat, Classical, Pop, Rock, Jazz, Vocal Enhanced.

i Previous
Press for previous track.

j Next
Press for next track.

k Play/Pause

Note:
Only if the Wi-Fi input is activated, the PREV, NEXT and RESET keys can work.

Tips:
The infrared remote control has effective scope of operating range which is less than 3m(10 ft.)and at 60 degrees angle left or right away from the system.

CARE AND MAINTENANCE

- Turn off the power to the speaker when unused for long periods of time.
- Ensure all equipment is turned off prior to cleaning. Surfaces only need occasional dusting/cleaning. Never use chemicals or solvents as they may damage the surface. Always clean using a dry cloth.
- Never touch the speaker drivers.

SPECIFICATIONS

FLF-6WF Wi-Fi Ceiling Speaker (Active)
FLF-6WFS Wi-Fi Ceiling Speaker Pair (Active+Passive)

Speaker	Active Speaker(Master)	Passive Speaker(Slave)
Woofer	6.5" Polypropylene Cone	6.5" Polypropylene Cone
Tweeter	0.75" Silk Dome	0.75" Silk Dome
Frequency Response	70Hz-20kHz	70Hz-20kHz
Sensitivity(1M/1W)	87dB	87dB
Nominal Impedance	8Ω	8Ω
RMS Power	/	60W
Amplifier Power	2x30W/8Ω	/
Wireless Connection System	Wi-Fi 802.11b/g/n	/
Wireless Transmission Distance	80m (262.5 ft)	/
Power Supply	DC 24V/2.5A	/
Dimensions	Ø233x105mm(Ø9.2"x4.1")	Ø233x105mm(Ø9.2"x4.1")
Cutout Size	Ø209mm (Ø 8.2")	Ø209mm (Ø 8.2")

FCC Statement

Any Changes or modifications not expressly approved by the party responsible for compliance could void the user's authority to operate the equipment.

This device complies with part 15 of the FCC Rules. Operation is subject to the following two conditions:

- (1) This device may not cause harmful interference, and
- (2) This device must accept any interference received, including interference that may cause undesired operation.

FCC Radiation Exposure Statement:

This equipment complies with FCC radiation exposure limits set forth for an uncontrolled environment .This equipment should be installed and operated with minimum distance 20cm between the radiator& your body.

Note : This equipment has been tested and found to comply with the limits for a Class B digital device, pursuant to part 15 of the FCC Rules. These limits are designed to provide reasonable protection against harmful interference in a residential installation.

This equipment generates,uses and can radiate radio frequency energy and, if not installed and used in accordance with the instructions, may cause harmful interference to radio communications. However, there is no guarantee that interference will not occur in a particular installation. If this equipment does cause harmful interference to radio or television reception, which can be determined by turning the equipment off and on, the user is encouraged to try to correct the interference by one or more of the following measures:

- Reorient or relocate the receiving antenna.
- Increase the separation between the equipment and receiver.
- Connect the equipment into an outlet on a circuit different from that to which the receiver is connected.
- Consult the dealer or an experienced radio/TV technician for help.